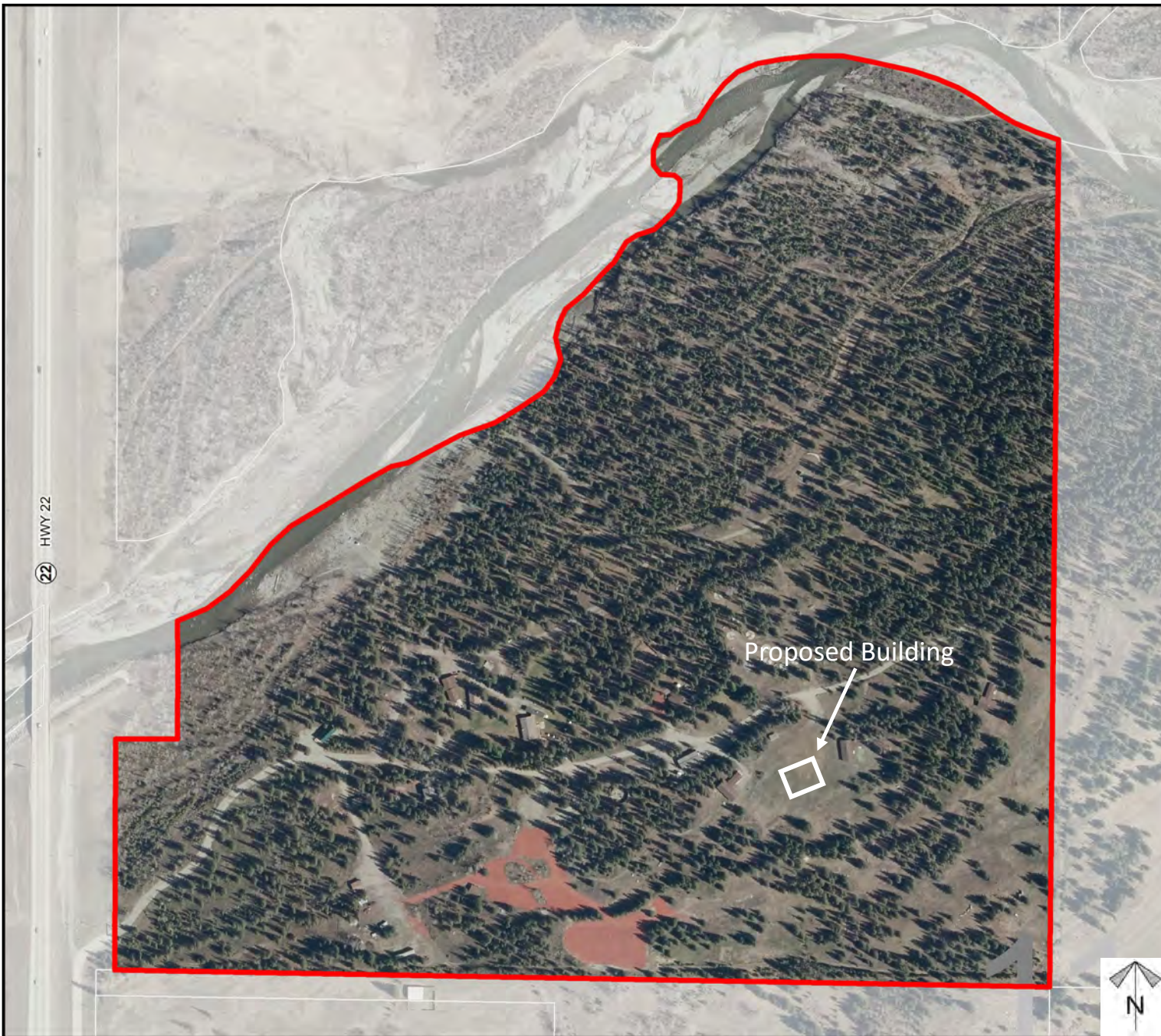


Development Proposal

Proposal

An amendment to Direct Control District (DC -21): to amend Sections 5.3.2 (b)(iii), 5.4.5 (j), and 6.5.0 , to facilitate future development of a new kitchen and dining building.



Division: 1
Roll: 04811003
File: PL20220134
Printed: Aug 4, 2022
Legal: A portion of NW-11-24-04-W05M

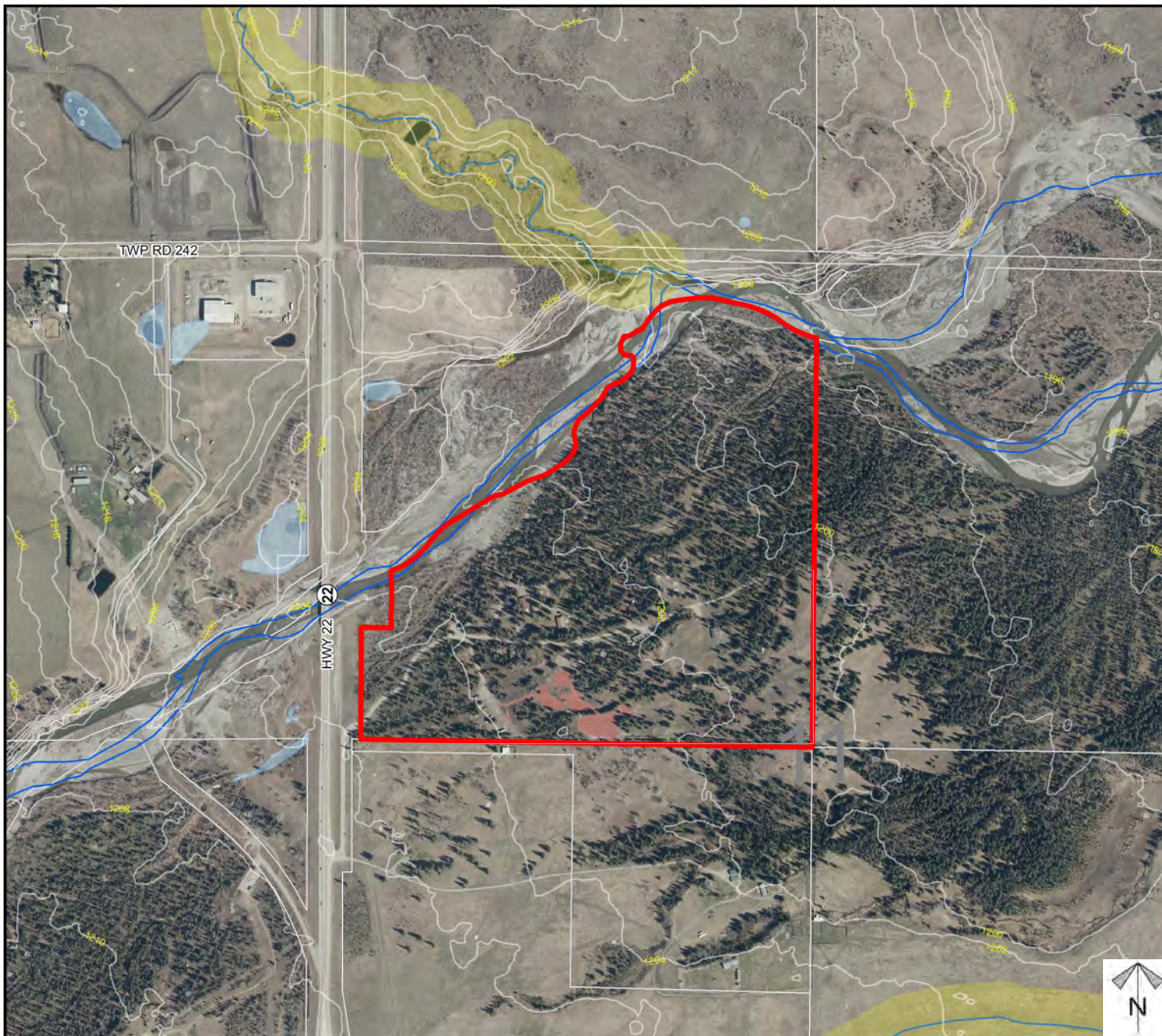
Environmental

Proposal

An amendment to Direct Control District (DC -21): to amend Sections 5.3.2 (b)(iii), 5.4.5 (j), and 6.5.0 , to facilitate future development of a new kitchen and dining building.

-  Subject Lands
-  Contour - 2 meters
-  Riparian Setbacks
-  Alberta Wetland Inventory
-  Surface Water

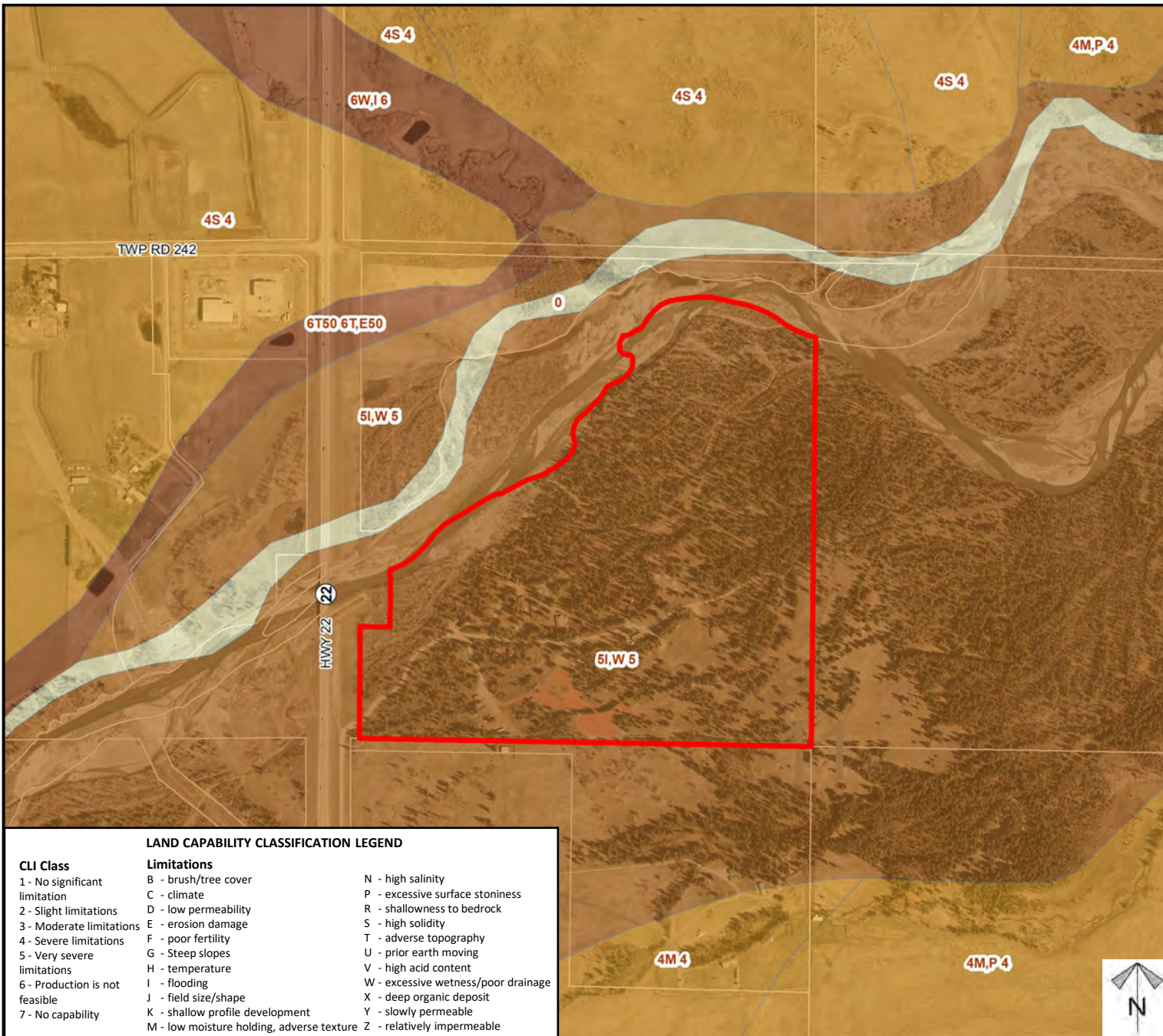
Division: 1
 Roll: 04811003
 File: PL20220134
 Printed: Aug 4, 2022
 Legal: A portion of NW-11-24-04-W05M



Soil Classifications

Proposal

An amendment to Direct Control District (DC -21): to amend Sections 5.3.2 (b)(iii), 5.4.5 (j), and 6.5.0 , to facilitate future development of a new kitchen and dining building.



LAND CAPABILITY CLASSIFICATION LEGEND

| CLI Class | Limitations | |
|--------------------------------|---|-------------------------------------|
| 1 - No significant limitation | B - brush/tree cover | N - high salinity |
| 2 - Slight limitations | C - climate | P - excessive surface stoniness |
| 3 - Moderate limitations | D - low permeability | R - shallowness to bedrock |
| 4 - Severe limitations | E - erosion damage | S - high solidity |
| 5 - Very severe limitations | F - poor fertility | T - adverse topography |
| 6 - Production is not feasible | G - Steep slopes | U - prior earth moving |
| 7 - No capability | H - temperature | V - high acid content |
| | I - flooding | W - excessive wetness/poor drainage |
| | J - field size/shape | X - deep organic deposit |
| | K - shallow profile development | Y - slowly permeable |
| | M - low moisture holding, adverse texture | Z - relatively impermeable |

Division: 1
 Roll: 04811003
 File: PL20220134
 Printed: Aug 4, 2022
 Legal: A portion of NW-11-24-04-W05M



Landowner Circulation Area

Proposal

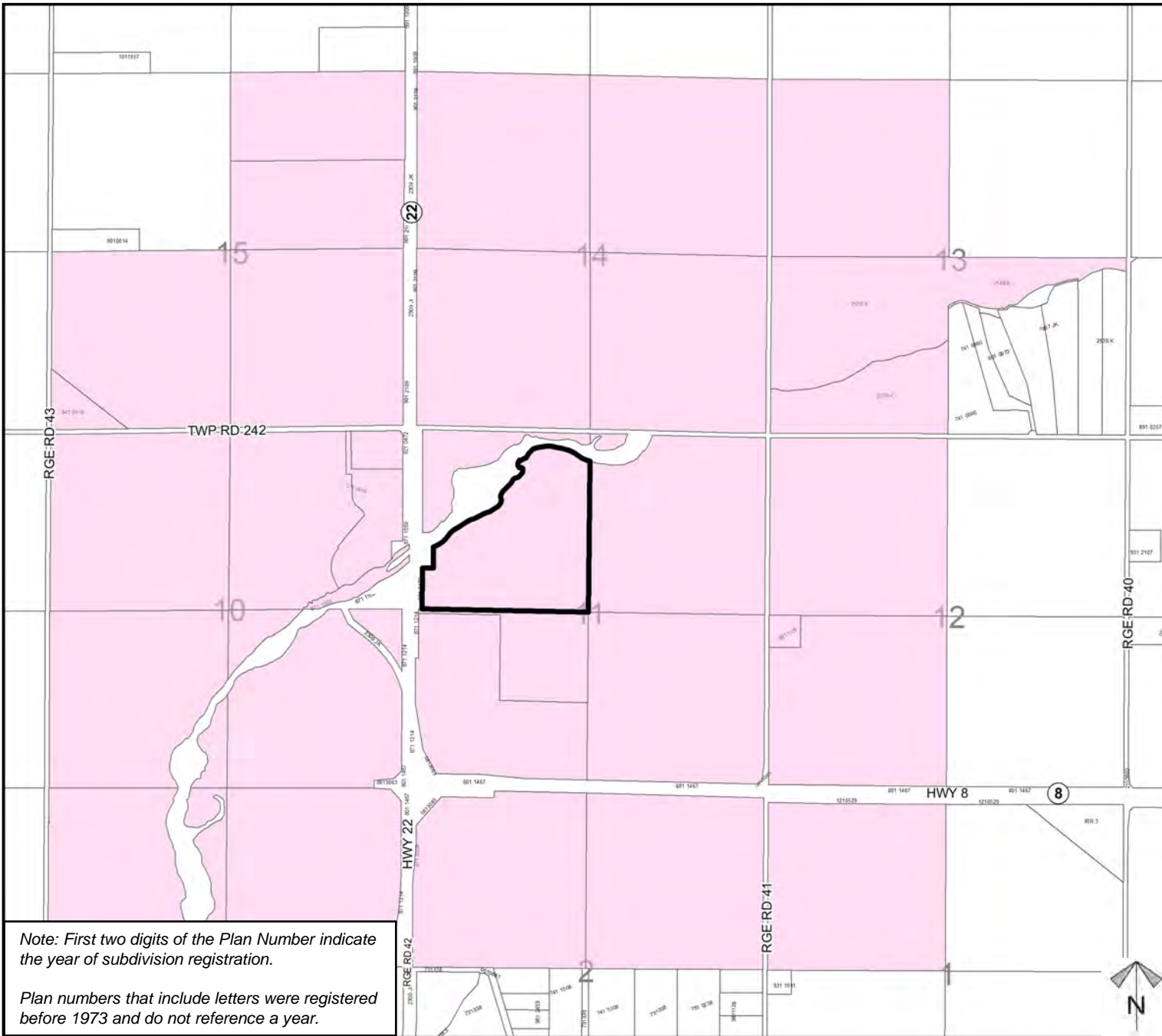
An amendment to Direct Control District (DC -21): to amend Sections 5.3.2 (b)(iii), 5.4.5 (j), and 6.5.0 , to facilitate future development of a new kitchen and dining building.

Legend

Support



Not Support



Note: First two digits of the Plan Number indicate the year of subdivision registration.

Plan numbers that include letters were registered before 1973 and do not reference a year.

Division: 1
Roll: 04811003
File: PL20220134
Printed: Aug 4, 2022
Legal: A portion of NW-11-24-04-W05M

