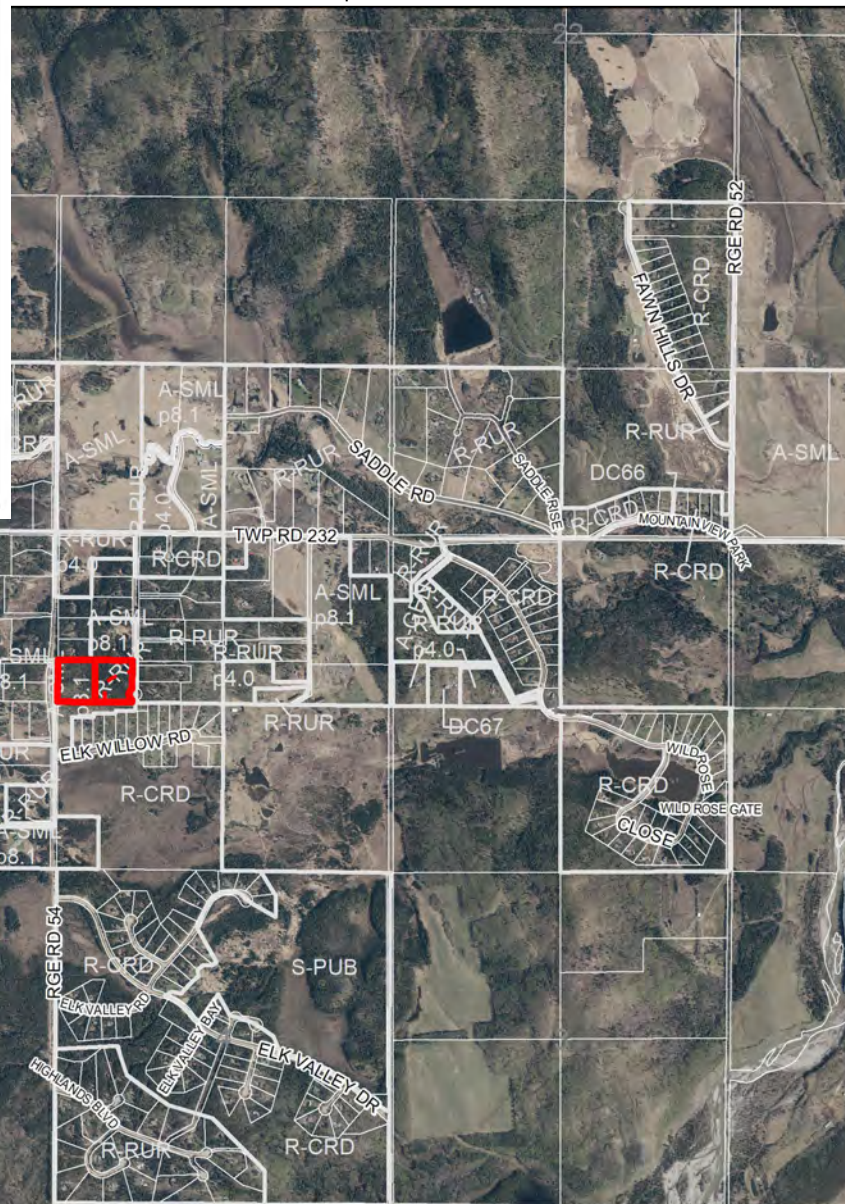
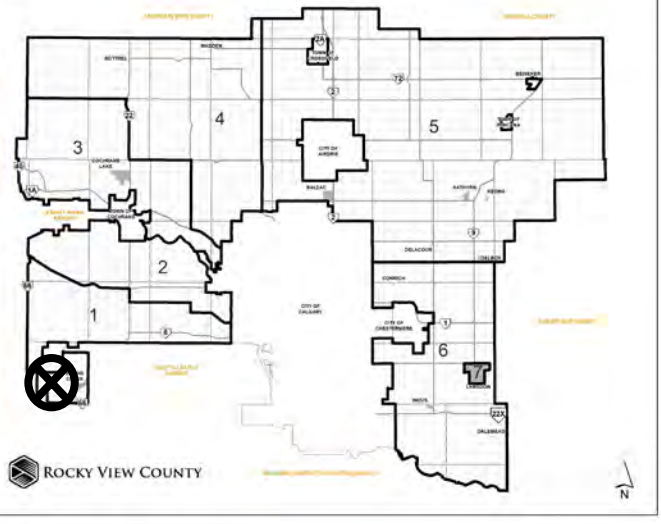


## Location & Context

### Subdivision Proposal

To adjust the boundaries between a  $\pm 3.59$  hectare ( $\pm 8.88$  acre) parcel and a  $\pm 3.55$  hectare ( $\pm 8.76$  acre) parcel in order to create a  $\pm 1.60$  hectare ( $\pm 3.95$  acre) parcel and a  $\pm 5.54$  hectare ( $\pm 13.69$  acre) parcel.



Division: 1  
Roll: 03909009 & 03909034  
File: PL20220021  
Printed: March 31, 2022  
Legal: Lot:4 (W. & E. portion)  
Plan:8010572 within NW-09-23-05-W05M

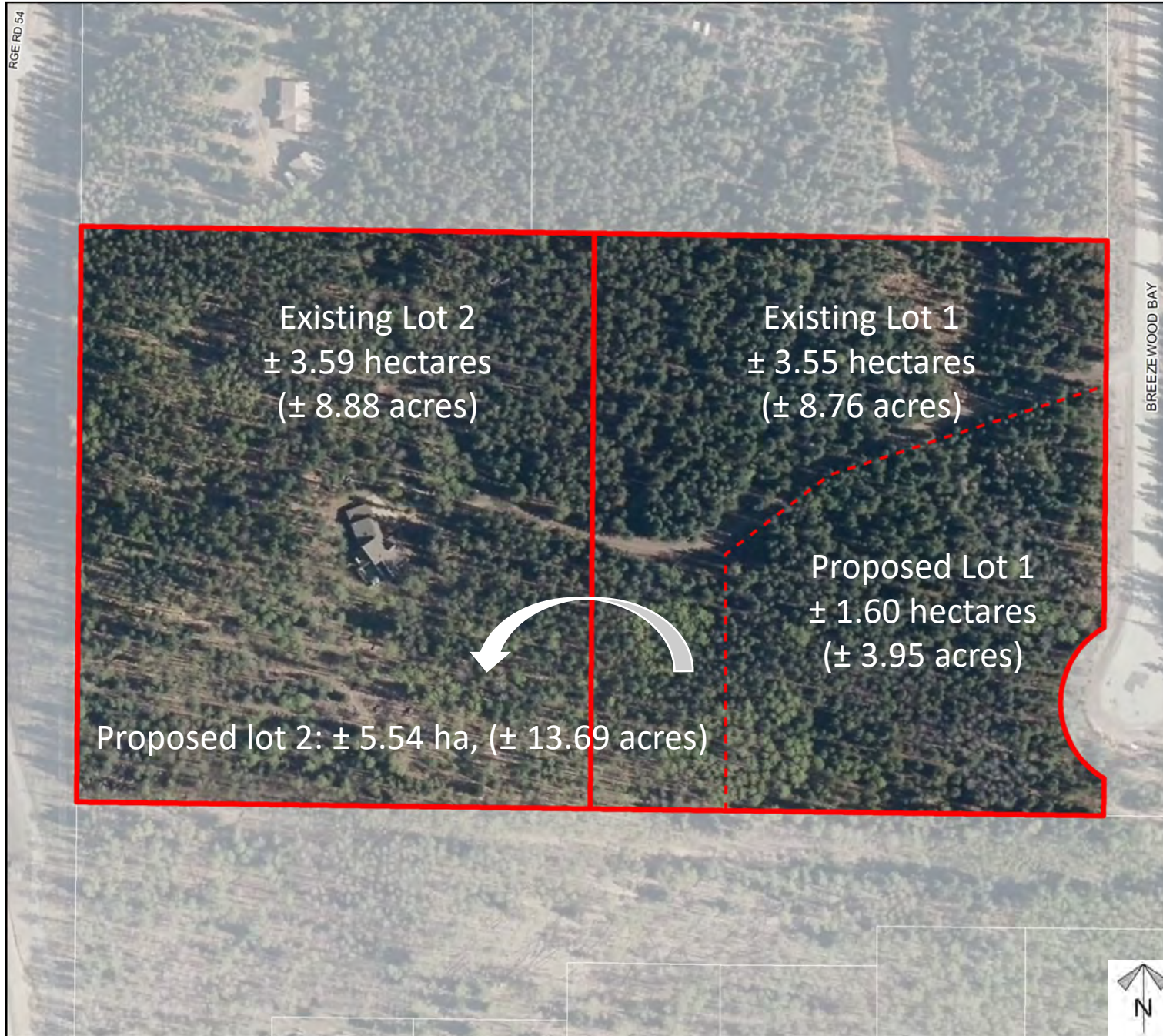




## Development Proposal

### Subdivision Proposal

To adjust the boundaries between a  $\pm 3.59$  hectare ( $\pm 8.88$  acre) parcel and a  $\pm 3.55$  hectare ( $\pm 8.76$  acre) parcel in order to create a  $\pm 1.60$  hectare ( $\pm 3.95$  acre) parcel and a  $\pm 5.54$  hectare ( $\pm 13.69$  acre) parcel.



Division: 1  
 Roll: 03909009 & 03909034  
 File: PL20220021  
 Printed: March 31, 2022  
 Legal: Lot:4 (W. & E. portion)  
 Plan:8010572 within NW-09-  
 23-05-W05M



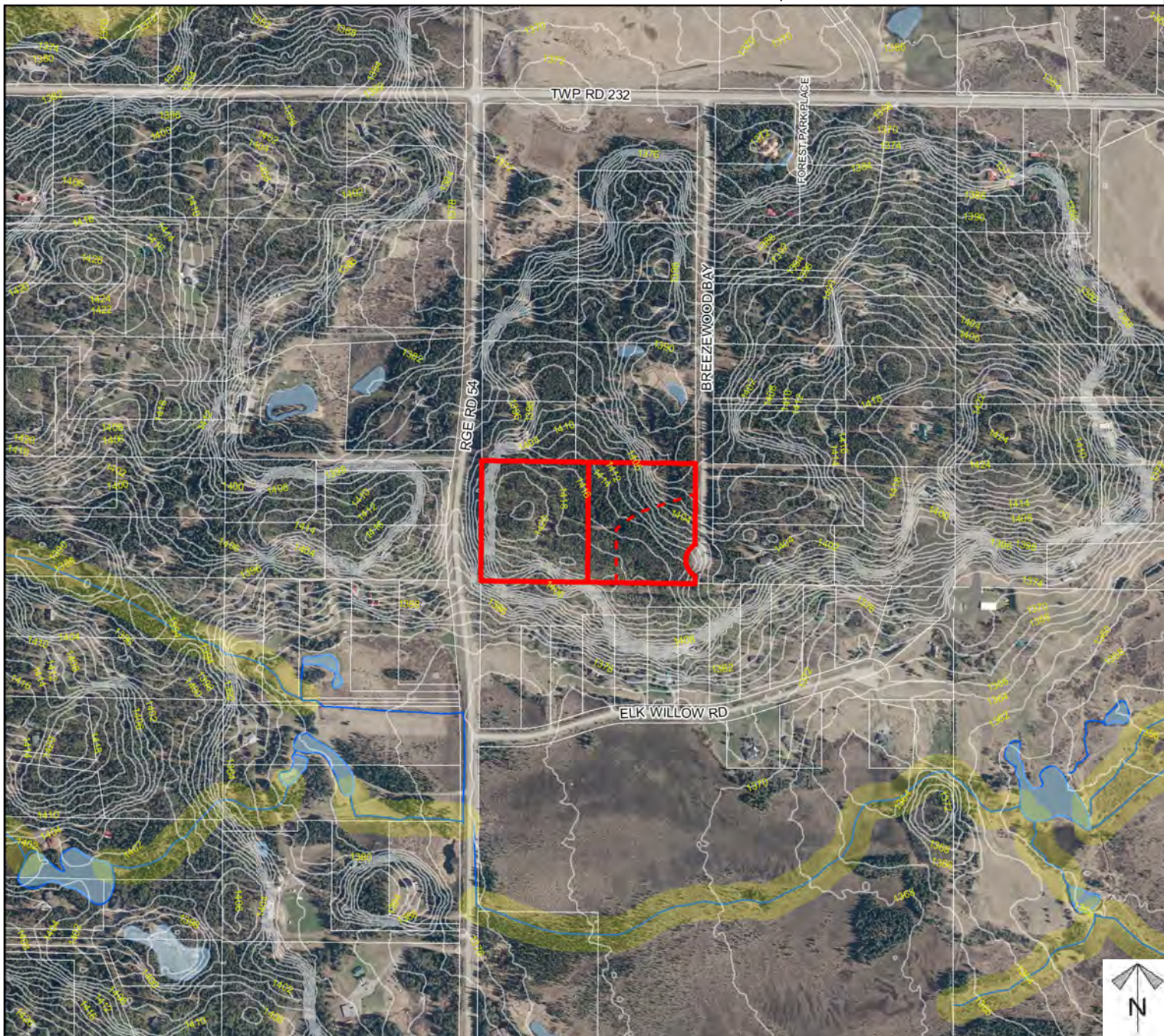
## Environmental

### Subdivision Proposal

To adjust the boundaries between a  $\pm 3.59$  hectare ( $\pm 8.88$  acre) parcel and a  $\pm 3.55$  hectare ( $\pm 8.76$  acre) parcel in order to create a  $\pm 1.60$  hectare ( $\pm 3.95$  acre) parcel and a  $\pm 5.54$  hectare ( $\pm 13.69$  acre) parcel.

-  Subject Lands
-  Contour - 2 meters
-  Riparian Setbacks
-  Alberta Wetland Inventory
-  Surface Water

Division: 1  
 Roll: 03909009 & 03909034  
 File: PL20220021  
 Printed: March 31, 2022  
 Legal: Lot: 4 (W. & E. portion)  
 Plan: 8010572 within NW-09-23-05-W05M

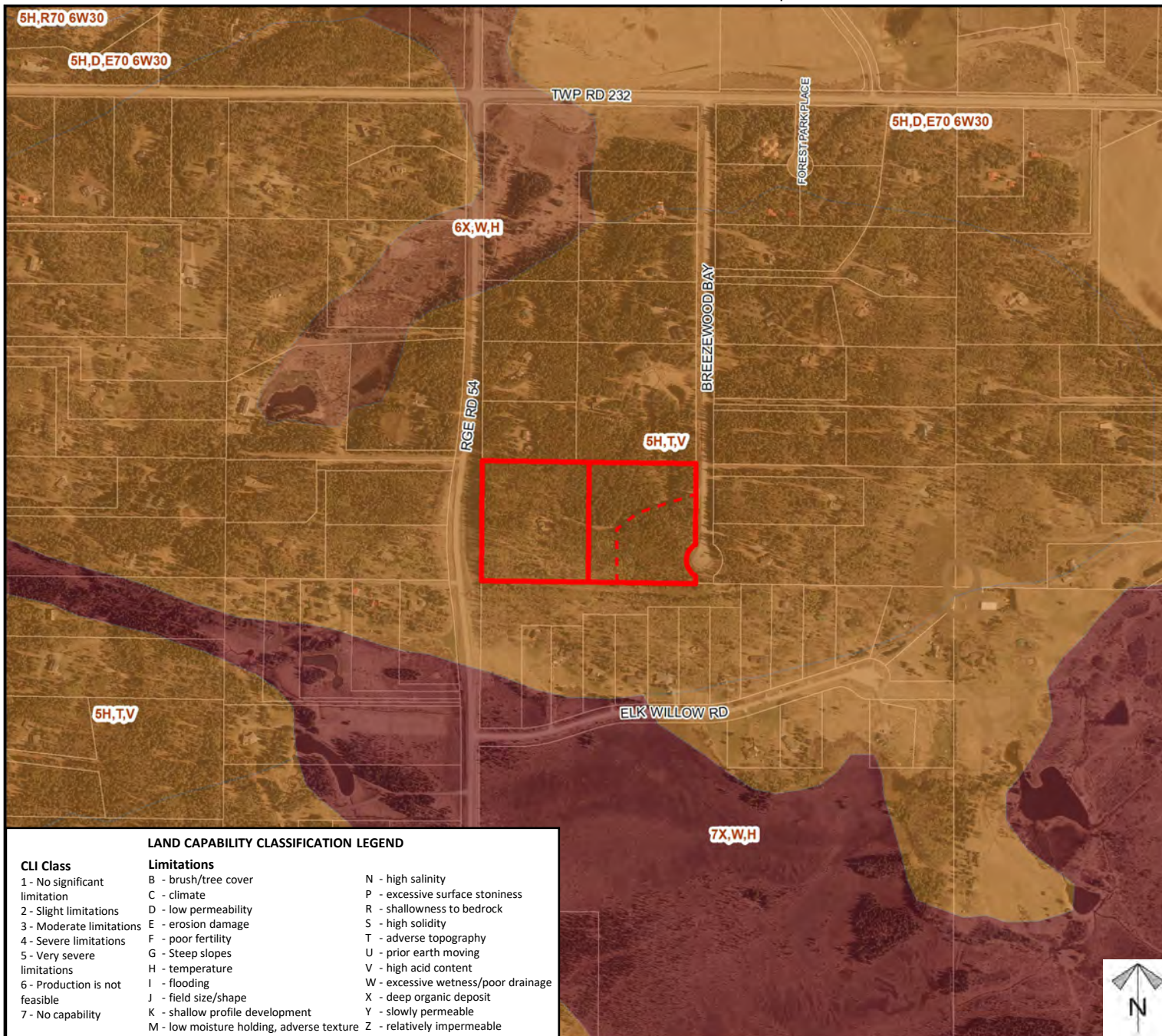




## Soil Classifications

### Subdivision Proposal

To adjust the boundaries between a  $\pm 3.59$  hectare ( $\pm 8.88$  acre) parcel and a  $\pm 3.55$  hectare ( $\pm 8.76$  acre) parcel in order to create a  $\pm 1.60$  hectare ( $\pm 3.95$  acre) parcel and a  $\pm 5.54$  hectare ( $\pm 13.69$  acre) parcel.



Division: 1  
 Roll: 03909009 & 03909034  
 File: PL20220021  
 Printed: March 31, 2022  
 Legal: Lot:4 (W. & E. portion)  
 Plan:8010572 within NW-09-23-05-W05M

## Landowner Circulation Area

### Subdivision Proposal

To adjust the boundaries between a  $\pm 3.59$  hectare ( $\pm 8.88$  acre) parcel and a  $\pm 3.55$  hectare ( $\pm 8.76$  acre) parcel in order to create a  $\pm 1.60$  hectare ( $\pm 3.95$  acre) parcel and a  $\pm 5.54$  hectare ( $\pm 13.69$  acre) parcel.

### Legend

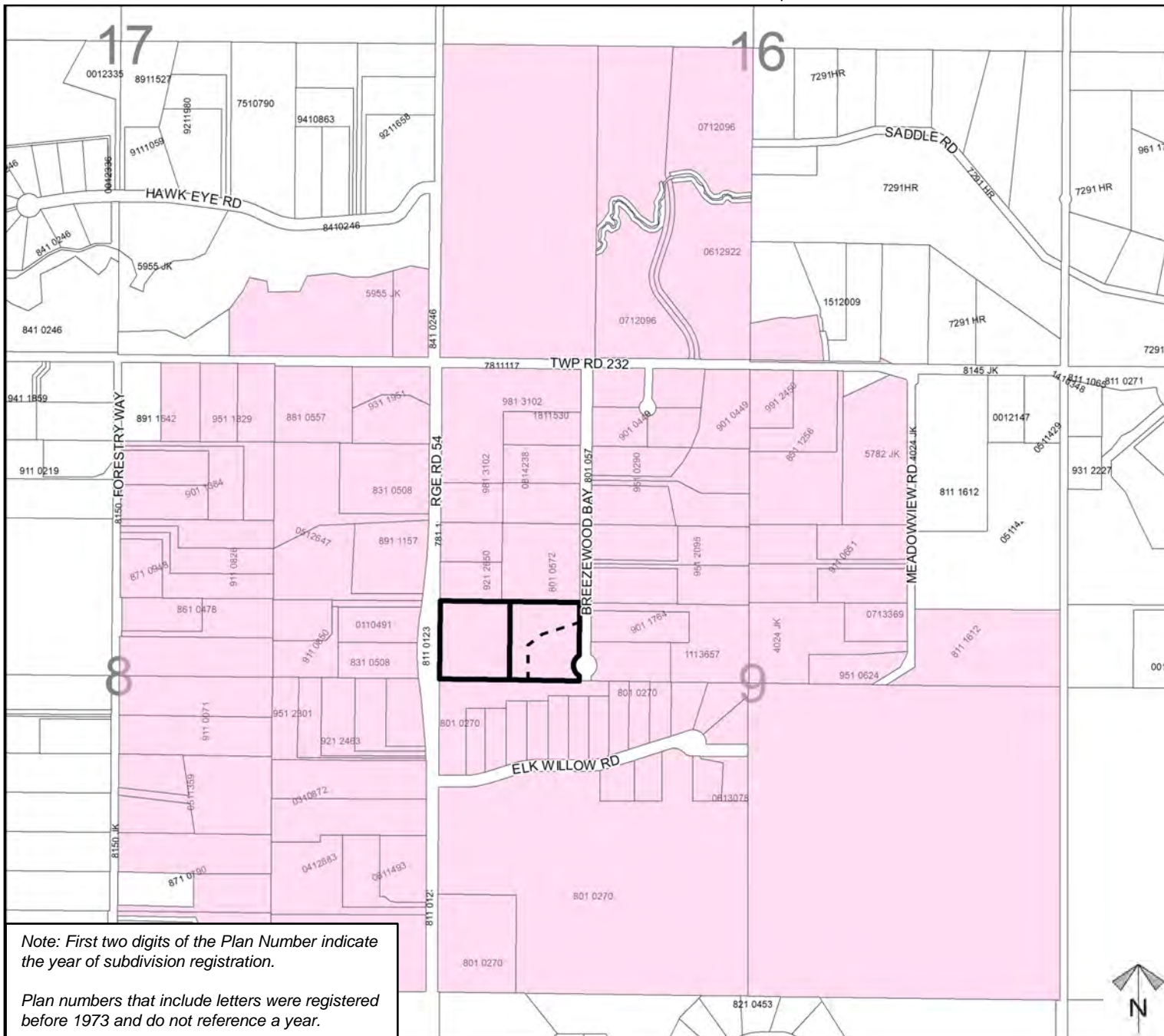
Support



Not Support



Division: 1  
Roll: 03909009 & 03909034  
File: PL20220021  
Printed: March 31, 2022  
Legal: Lot:4 (W. & E. portion)  
Plan:8010572 within NW-09-23-05-W05M









## Tentative Plan

### Boundary Adjustment Proposal

To adjust the boundaries between a  $\pm 3.59$  hectare ( $\pm 8.88$  acre) parcel and a  $\pm 3.55$  hectare ( $\pm 8.76$  acre) parcel in order to create a  $\pm 1.60$  hectare ( $\pm 3.95$  acre) parcel and a  $\pm 5.54$  hectare ( $\pm 13.69$  acre) parcel.

#### Legend

Dwelling	
Existing Approach	
New Approach	
Driveway	

#### Surveyor's Notes:

1. Parcels must meet minimum size and setback requirements of Land Use Bylaw C-8000-2020.
2. The subdivision will result in one undersized parcel
3. Refer to Notice of Transmittal for approval conditions related to this Tentative Plan.

Division: 1

Roll: 03909009 & 03909034

File: PL20220021

Printed: March 31, 2022

Legal: Lot:4 (W. & E. portion)

Plan:8010572 within NW-09-23-05-W05M

