



Location & Context

Development Proposal

Installation of a Solar Farm and ancillary uses (including a sub station, community garden, portable buildings, and over height fencing)

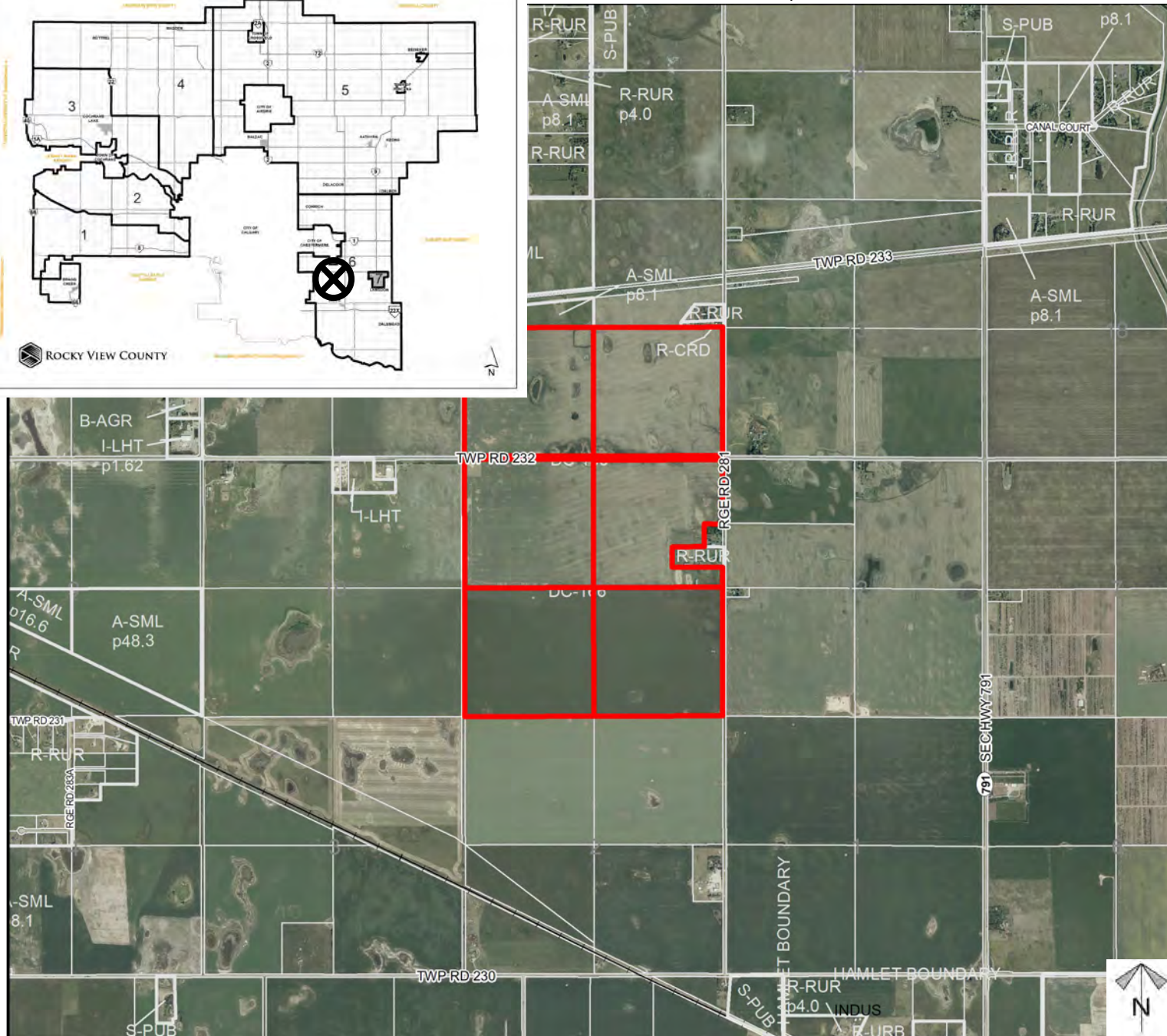
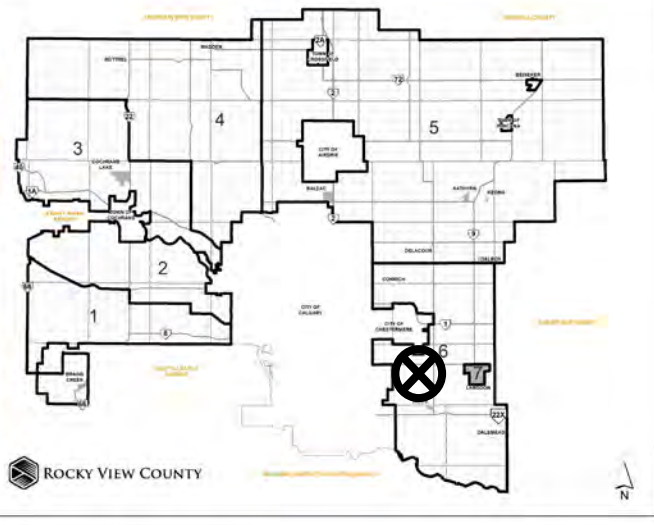
Division: 6

*Rolls: 03314001, 03314002,
03311006, 03311003,
03311001, 03311002*

File: PRDP20226218

Printed: November 17, 2022

*Legal: Portions of SE/SW-
14-23-28-W04M &
NW/NE/SE/SW-11-23-28-
W04M*

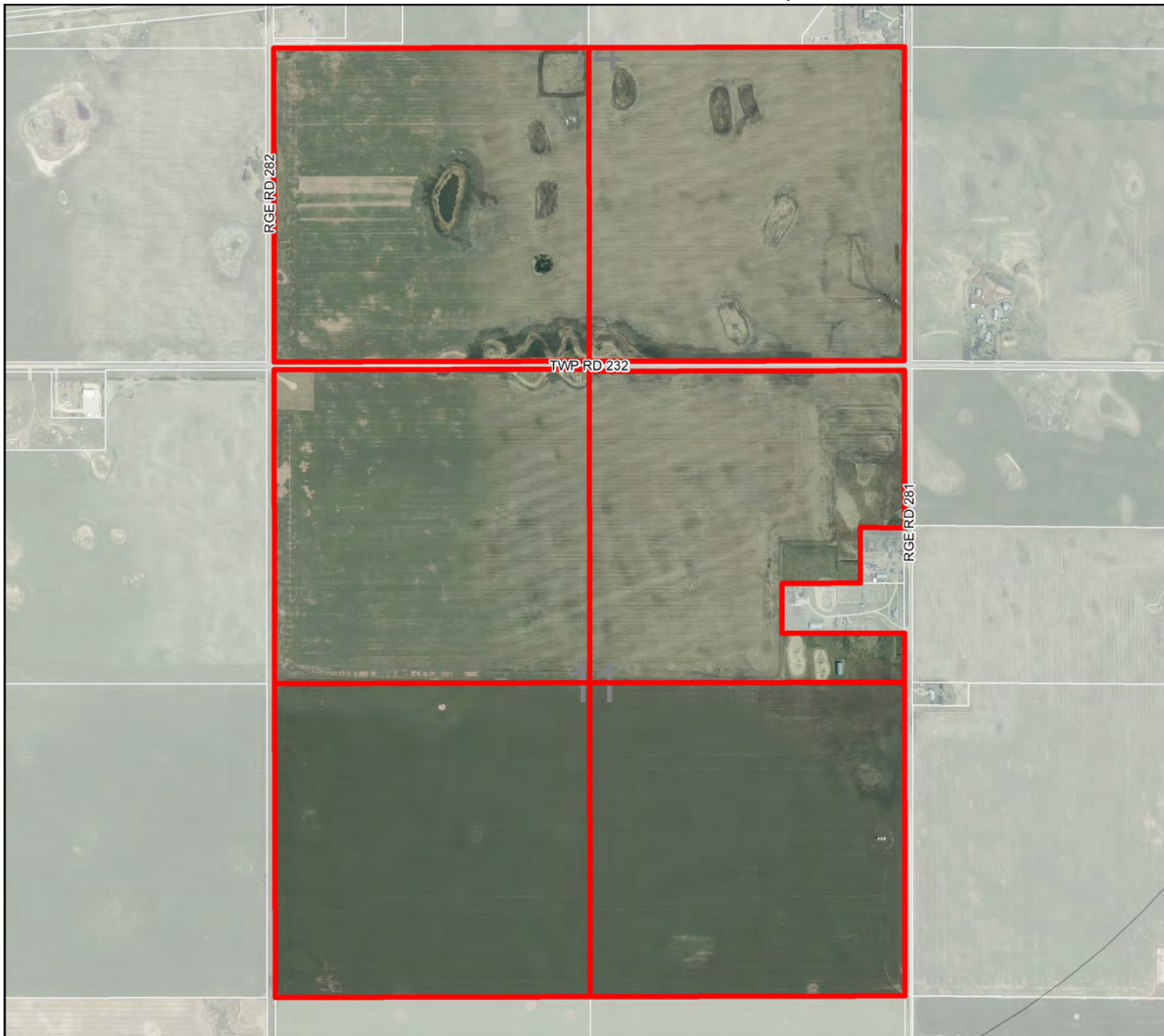




Development Proposal

Development Proposal

Installation of a Solar Farm and ancillary uses (including a sub station, community garden, portable buildings, and over height fencing)



Division: 6

*Rolls: 03314001, 03314002,
03311006, 03311003,
03311001, 03311002*

File: PRDP20226218

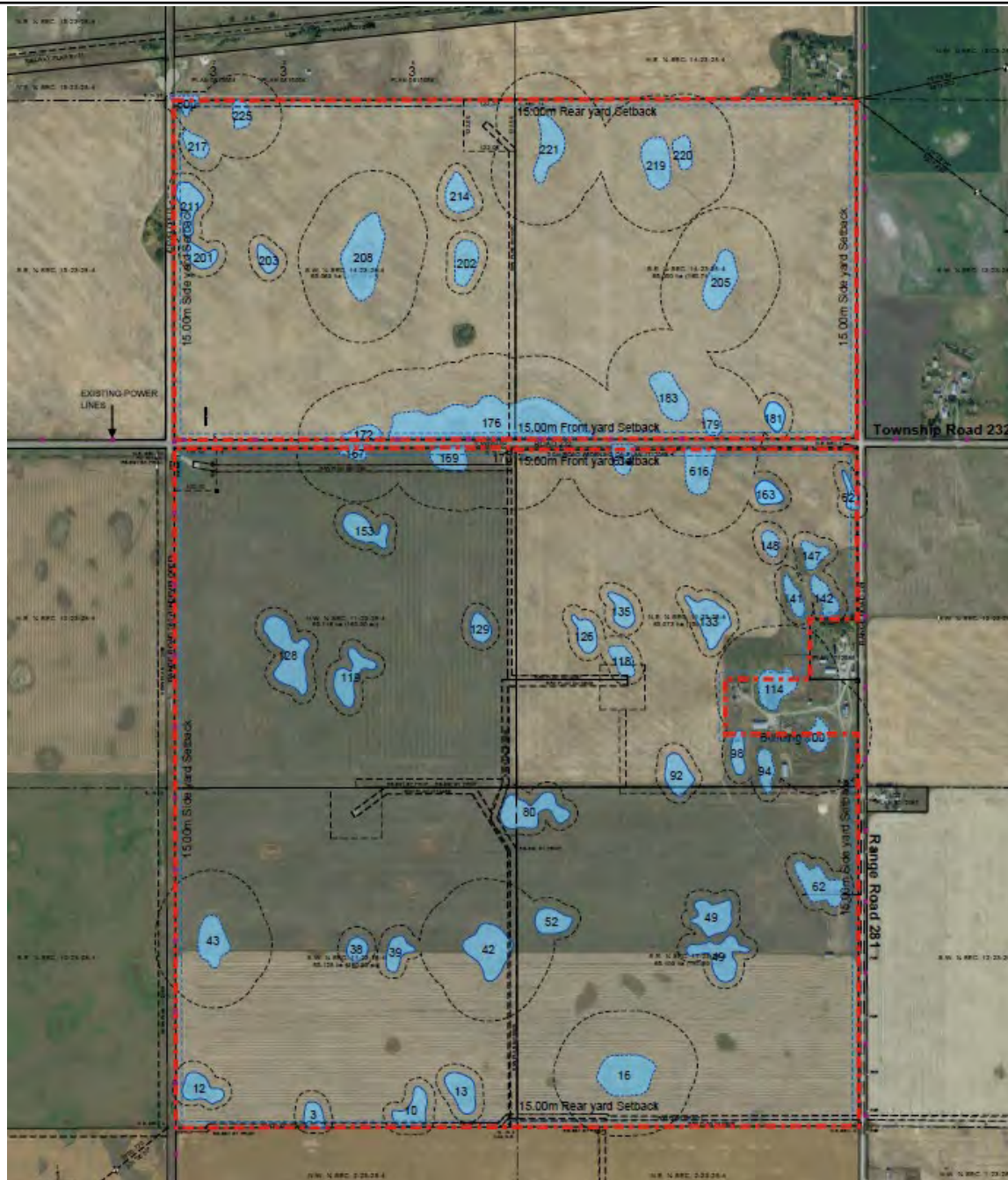
Printed: November 17, 2022

*Legal: Portions of SE/SW-
14-23-28-W04M &
NW/NE/SE/SW-11-23-28-
W04M*

Environmental - Wetlands

Development Proposal

Installation of a Solar Farm and ancillary uses (including a sub station, community garden, portable buildings, and over height fencing)

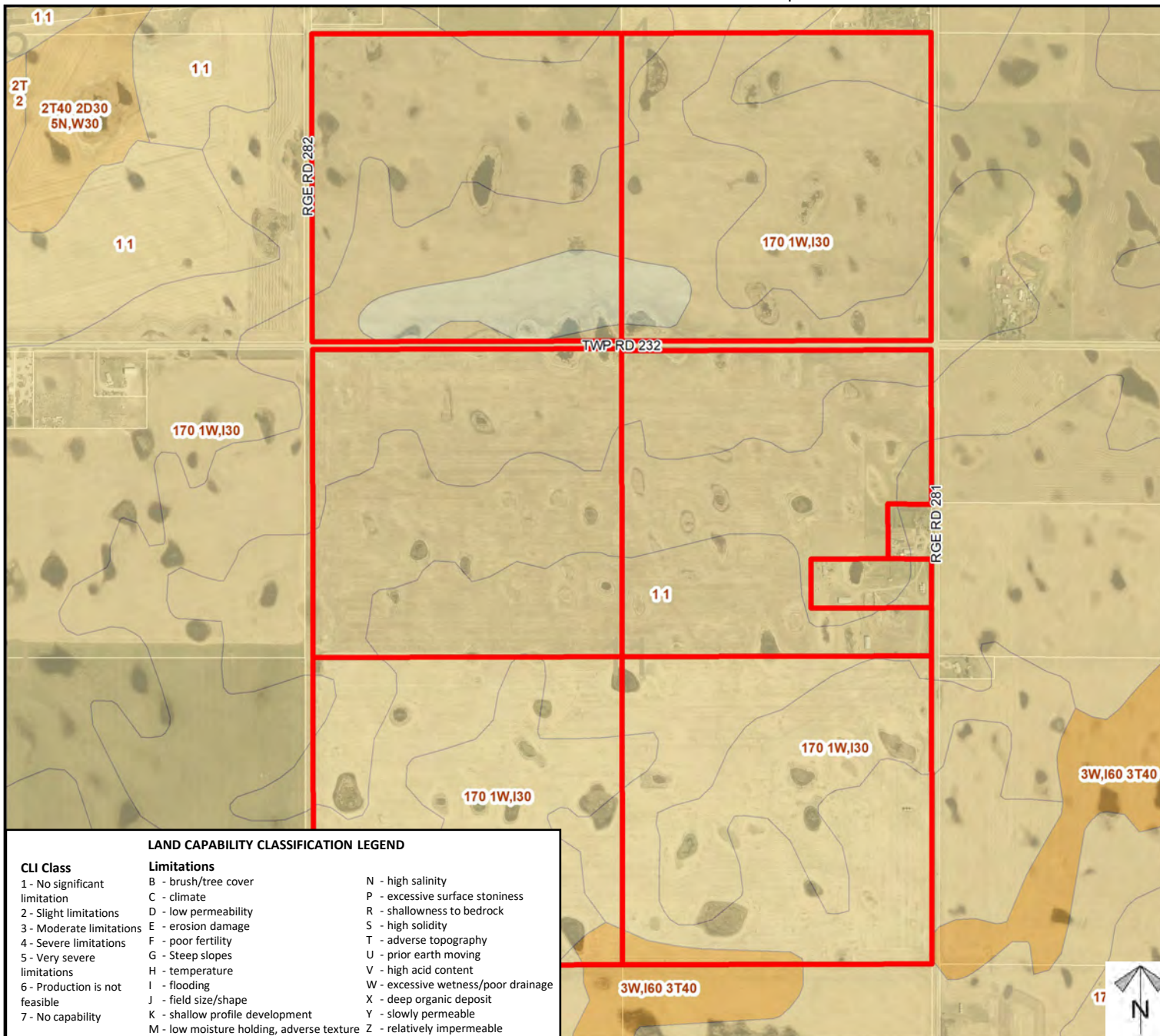


Division: 6
 Rolls: 03314001, 03314002,
 03311006, 03311003,
 03311001, 03311002
 File: PRDP20226218
 Printed: November 17, 2022
 Legal: Portions of SE/SW-
 14-23-28-W04M &
 NW/NE/SE/SW-11-23-28-
 W04M

Soil Classifications

Development Proposal

Installation of a Solar Farm and ancillary uses (including a sub station, community garden, portable buildings, and over height fencing)



LAND CAPABILITY CLASSIFICATION LEGEND

CLI Class

- 1 - No significant limitation
- 2 - Slight limitations
- 3 - Moderate limitations
- 4 - Severe limitations
- 5 - Very severe limitations
- 6 - Production is not feasible
- 7 - No capability

Limitations

- B - brush/tree cover
- C - climate
- D - low permeability
- E - erosion damage
- F - poor fertility
- G - Steep slopes
- H - temperature
- I - flooding
- J - field size/shape
- K - shallow profile development
- M - low moisture holding, adverse texture

- N - high salinity
- P - excessive surface stoniness
- R - shallowness to bedrock
- S - high solidity
- T - adverse topography
- U - prior earth moving
- V - high acid content
- W - excessive wetness/poor drainage
- X - deep organic deposit
- Y - slowly permeable
- Z - relatively impermeable

Division: 6

Rolls: 03314001, 03314002,
 03311006, 03311003,
 03311001, 03311002

File: PRDP20226218

Printed: November 17, 2022

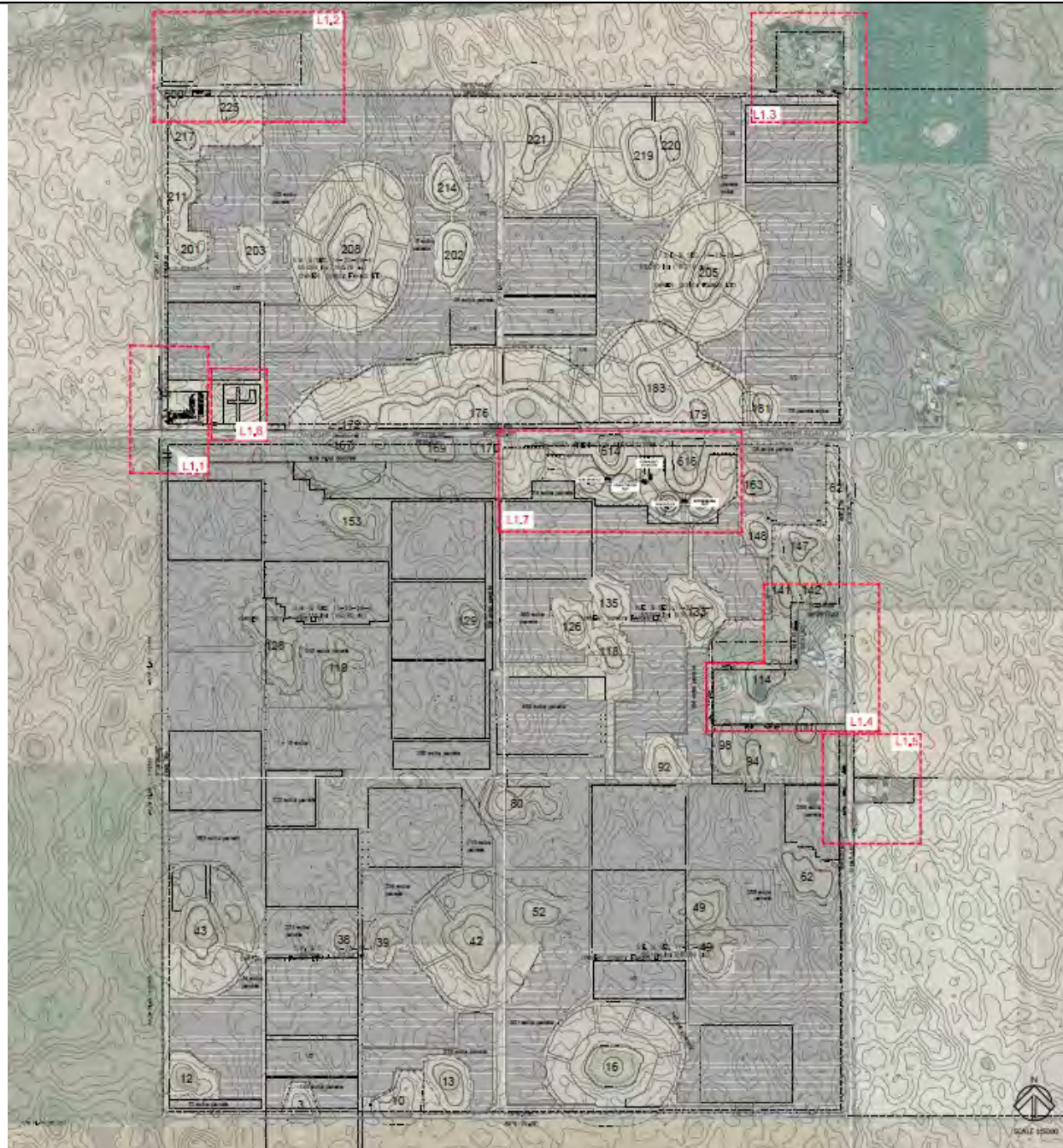
Legal: Portions of SE/SW-
 14-23-28-W04M &
 NW/NE/SE/SW-11-23-28-
 W04M



Landscaping Plan

Development Proposal

Installation of a Solar Farm and ancillary uses (including a sub station, community garden, portable buildings, and over height fencing)



Division: 6

*Rolls: 03314001, 03314002,
03311006, 03311003,
03311001, 03311002*

File: PRDP20226218

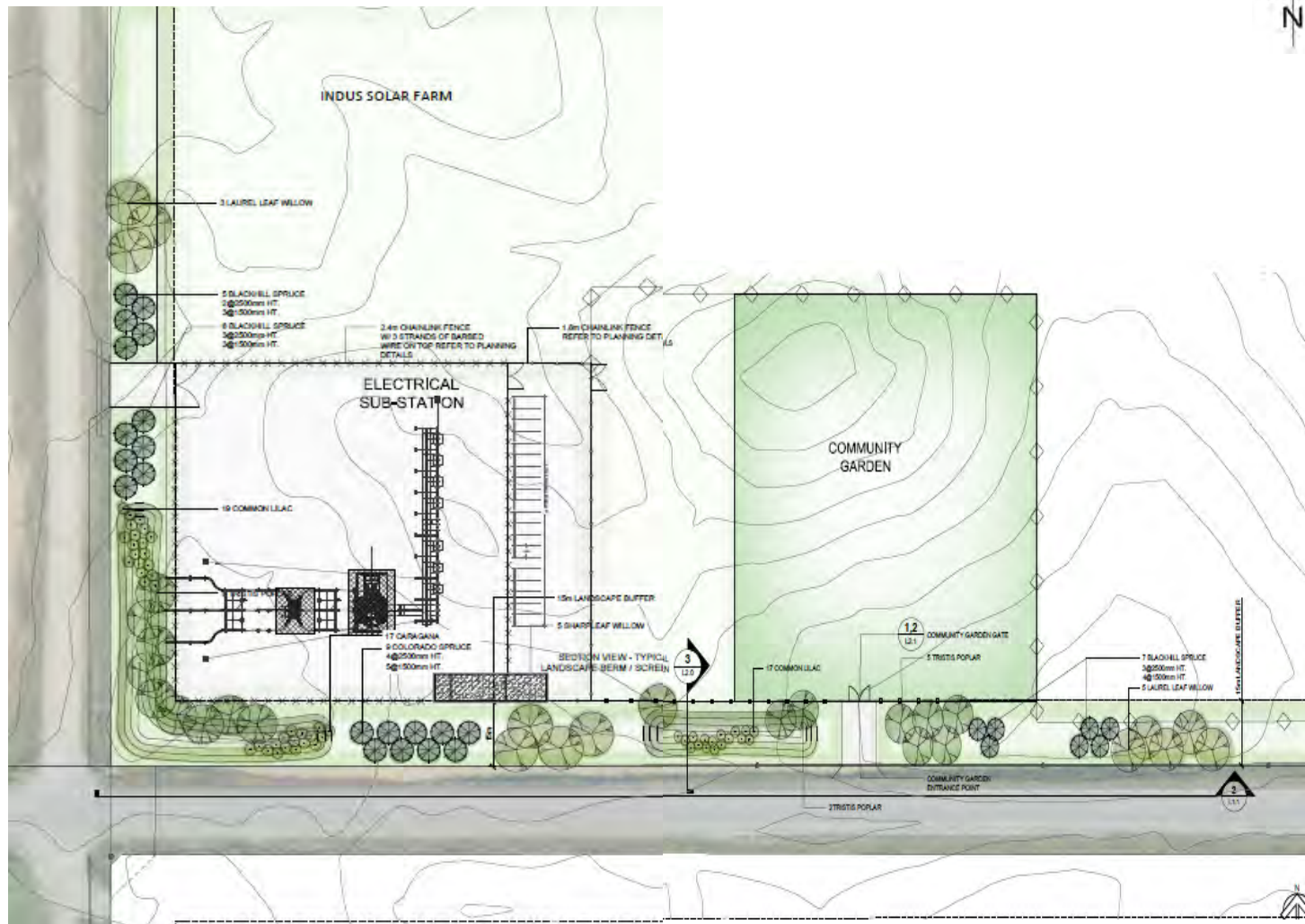
Printed: November 17, 2022

*Legal: Portions of SE/SW-
14-23-28-W04M &
NW/NE/SE/SW-11-23-28-
W04M*

Landscaping Plan – L1.1

Development Proposal

Installation of a Solar Farm and ancillary uses (including a sub station, community garden, portable buildings, and over height fencing)



Division: 6
Rolls: 03314001, 03314002,
03311006, 03311003,
03311001, 03311002
File: PRDP20226218
Printed: November 17, 2022
Legal: Portions of SE/SW-
14-23-28-W04M &
NW/NE/SE/SW-11-23-28-
W04M

Landscaping Plan – L1.3

Development Proposal

Installation of a Solar Farm and ancillary uses (including a sub station, community garden, portable buildings, and over height fencing)



1 LANDSCAPE PLAN
1:1.3



Division: 6

Rolls: 03314001, 03314002,
03311006, 03311003,
03311001, 03311002

File: PRDP20226218

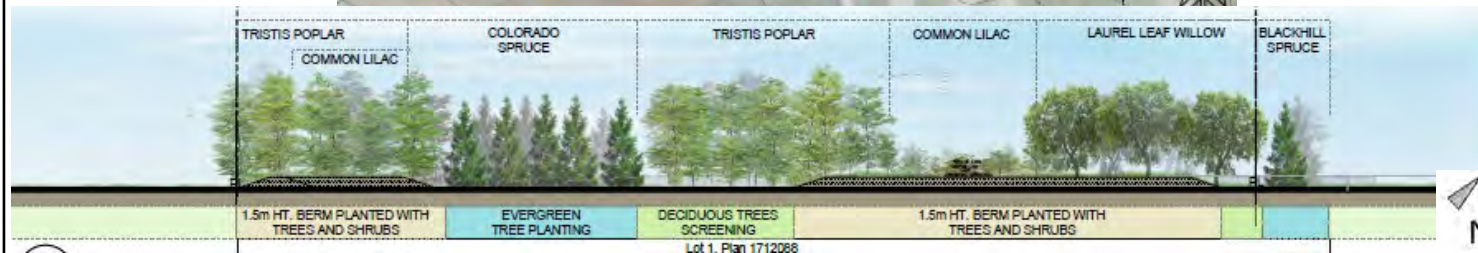
Printed: November 17, 2022

Legal: Portions of SE/SW-
14-23-28-W04M &
NW/NE/SE/SW-11-23-28-
W04M

Landscaping Plan – L1.4a

Development Proposal

Installation of a Solar Farm and ancillary uses (including a sub station, community garden, portable buildings, and over height fencing)



Division: 6

Rolls: 03314001, 03314002,
03311006, 03311003,
03311001, 03311002

File: PRDP20226218

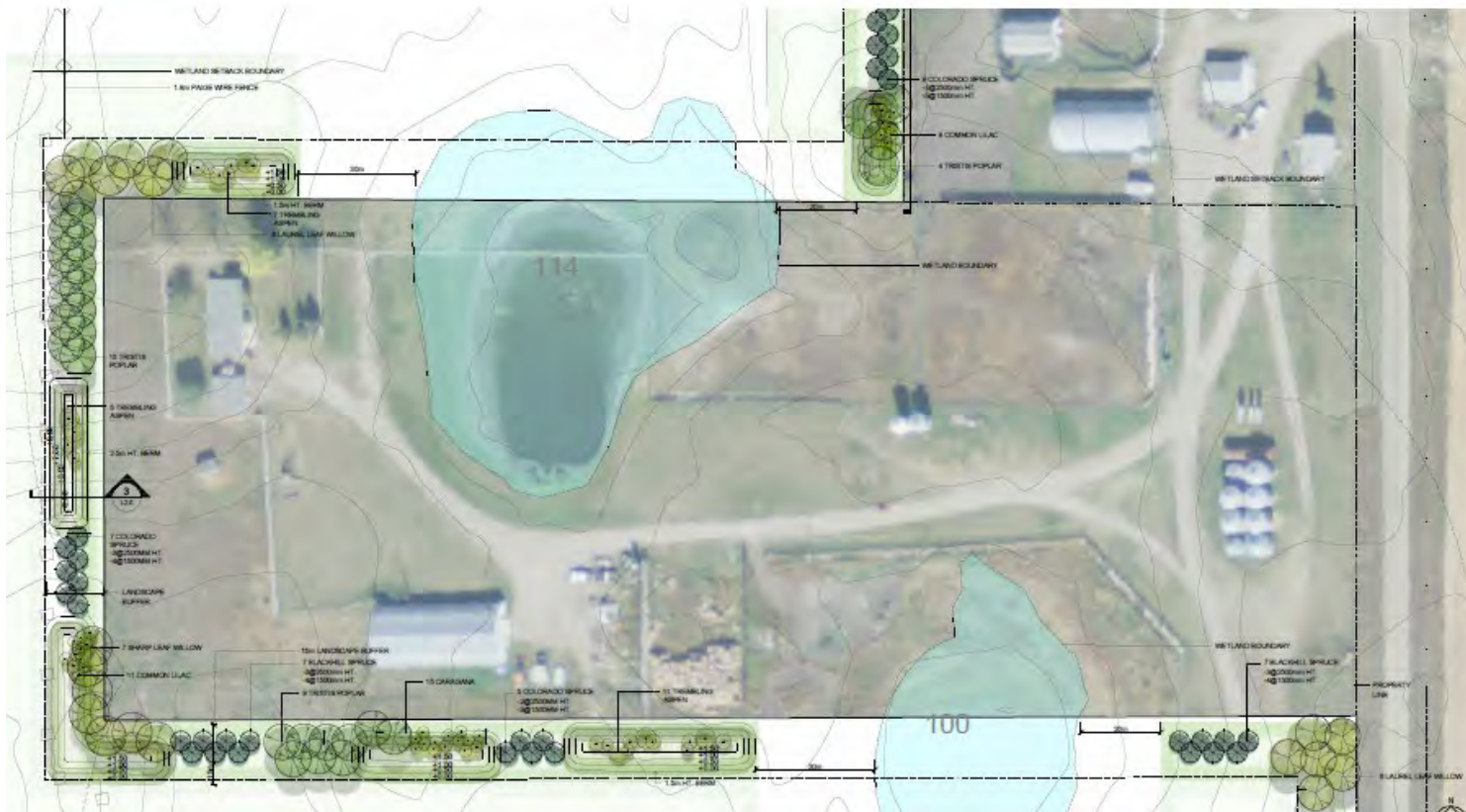
Printed: November 17, 2022

Legal: Portions of SE/SW-
14-23-28-W04M &
NW/NE/SE/SW-11-23-28-
W04M

Landscaping Plan – L1.4b

Development Proposal

Installation of a Solar Farm and ancillary uses (including a sub station, community garden, portable buildings, and over height fencing)

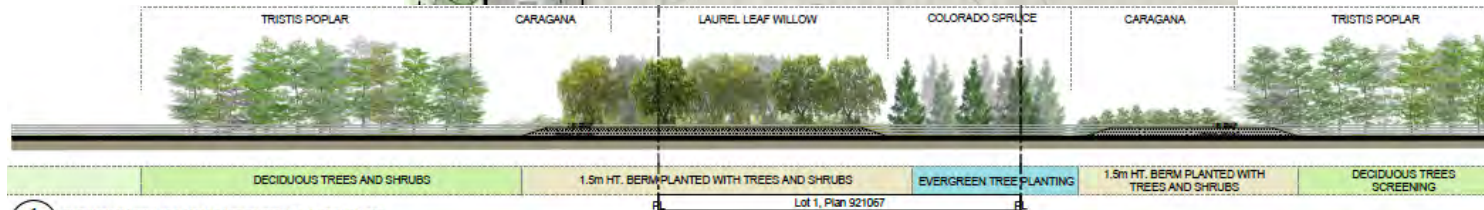


Division: 6
Rolls: 03314001, 03314002,
03311006, 03311003,
03311001, 03311002
File: PRDP20226218
Printed: November 17, 2022
Legal: Portions of SE/SW-
14-23-28-W04M &
NW/NE/SE/SW-11-23-28-
W04M

Landscaping Plan – L1.5

Development Proposal

Installation of a Solar Farm and ancillary uses (including a sub station, community garden, portable buildings, and over height fencing)



1 ELEVATION VIEW OF LANDSCAPE BUFFER - LOOKING WEST

Division: 6

Rolls: 03314001, 03314002, 03311006, 03311003, 03311001, 03311002

File: PRDP20226218

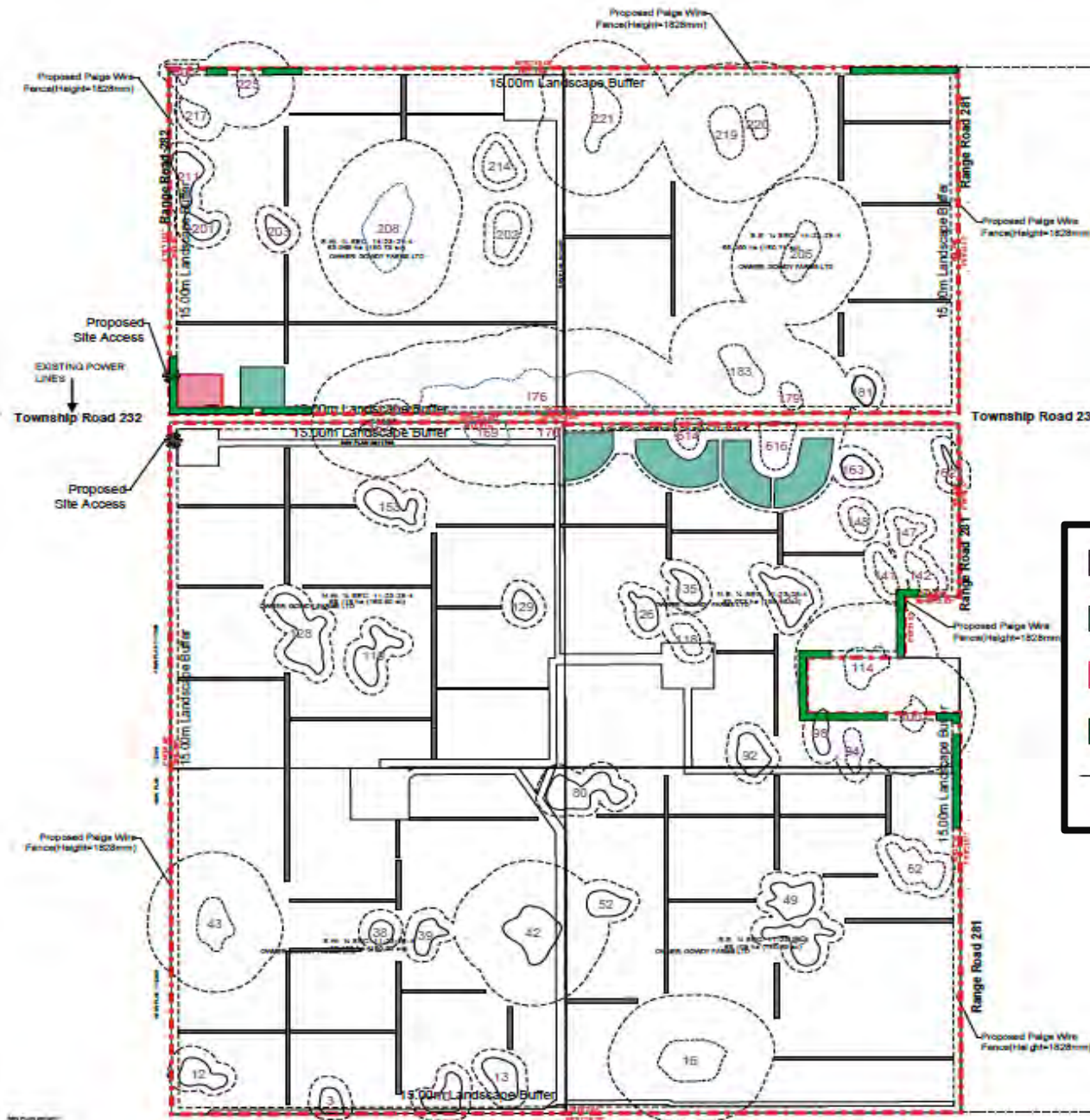
Printed: November 17, 2022


Legal: Portions of SE/SW-14-23-28-W04M & NW/NE/SE/SW-11-23-28-W04M

Site Plan – Transportation Levy Area

Development Proposal

Installation of a Solar Farm and ancillary uses (including a sub station, community garden, portable buildings, and over height fencing)



	GRAVEL ROAD	(9.42ha (23.29ac))
	COMMUNITY GARDENS	(5.27ha (13.01ac))
	SUBSTATION AREA	(0.71ha (1.75ac))
	LANDSCAPE AREA	(2.33ha (5.77ac))
TOTAL AREA		17.73ha (43.81ac)

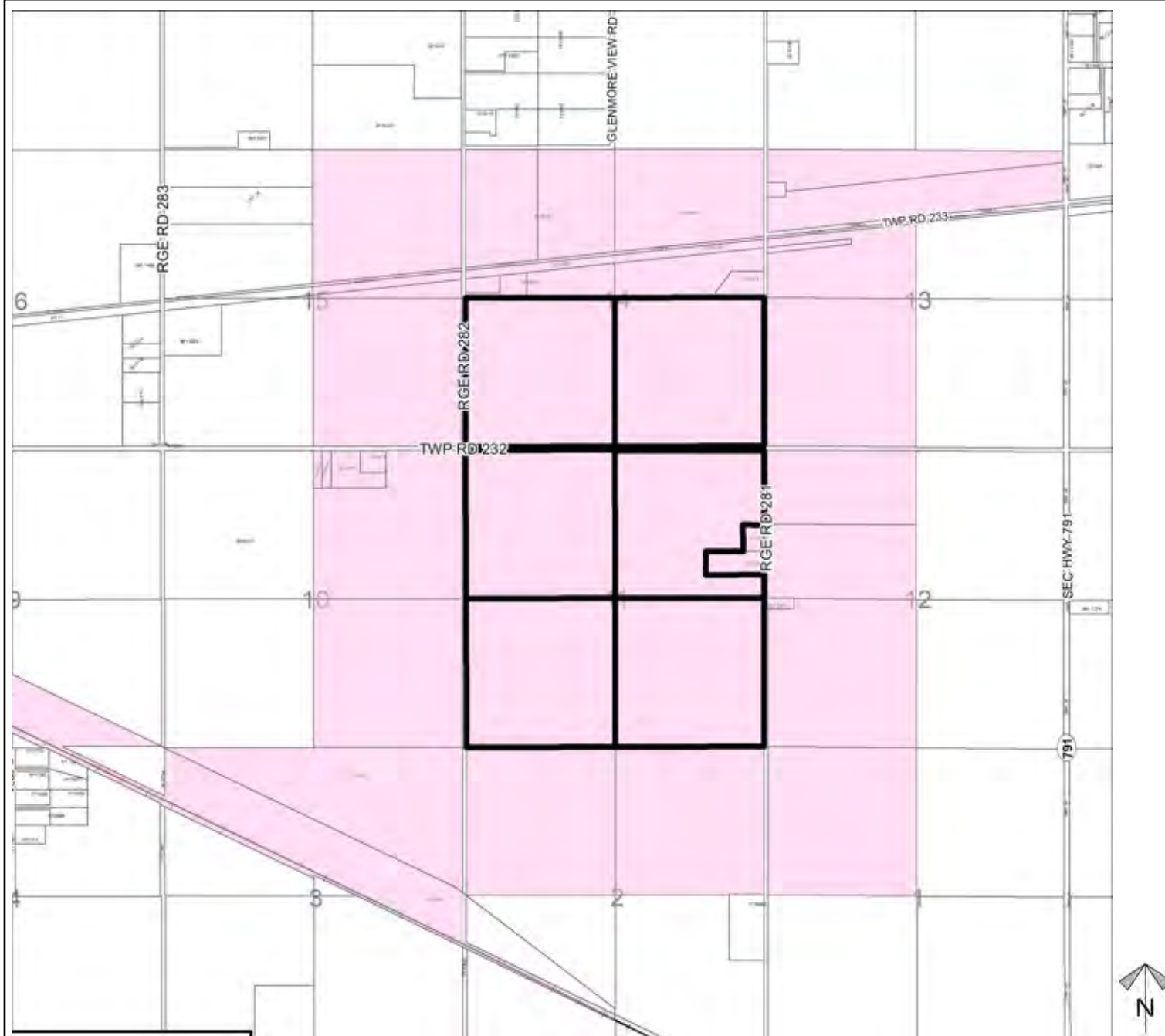
Division: 6
 Rolls: 03314001, 03314002,
 03311006, 03311003,
 03311001, 03311002
 File: PRDP20226218
 Printed: November 17, 2022
 Legal: Portions of SE/SW-
 14-23-28-W04M &
 NW/NE/SE/11-23-28-
 W04M



Landowner Circulation Area

Development Proposal

Installation of a Solar Farm and ancillary uses (including a sub station, community garden, portable buildings, and over height fencing)



Division: 6
 Rolls: 03314001, 03314002,
 03311006, 03311003,
 03311001, 03311002
 File: PRDP20226218
 Printed: November 17, 2022
 Legal: Portions of SE/SW-
 14-23-28-W04M &
 NW/NE/SE/SW-11-23-28-
 W04M