



Location & Context

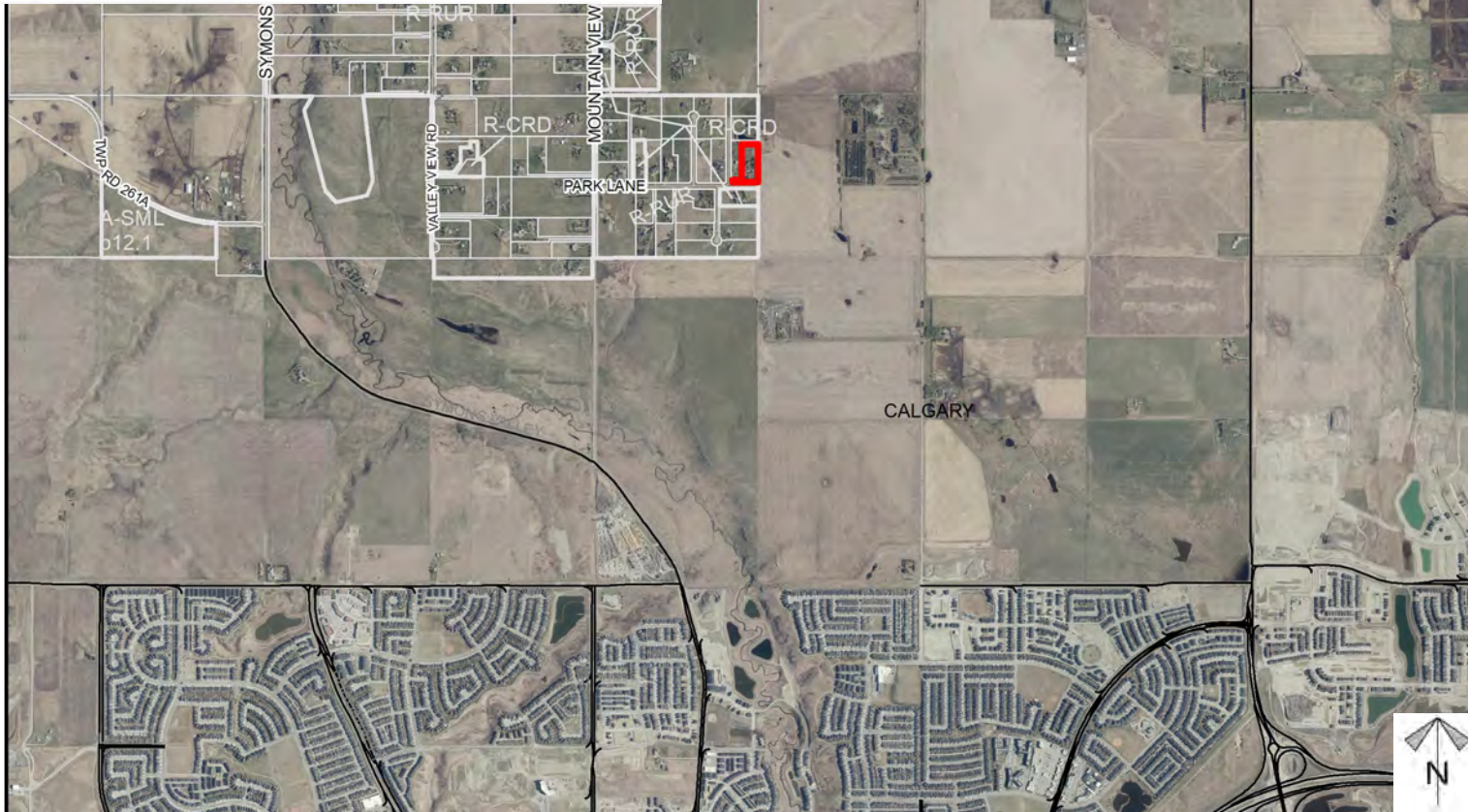
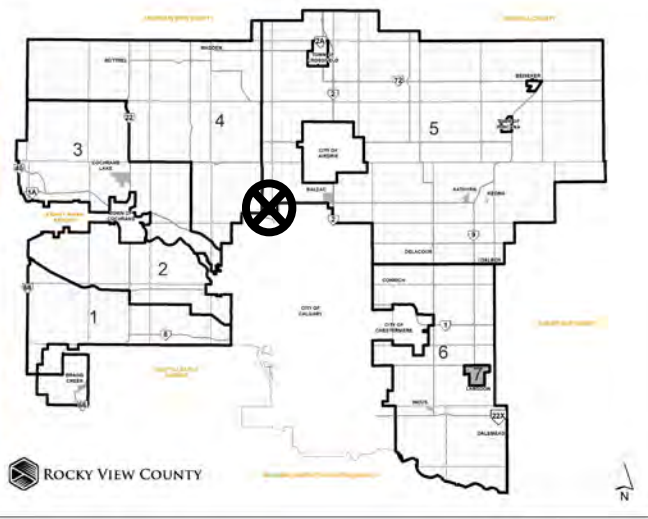
Redesignation & MSDP Proposal

To redesignate the subject lands from Residential, Rural District (R-RUR) to Special, Public Services District (S-PUB) to accommodate a Religious Assembly use.

&

To support the Sri Lankan Buddhist Society Calgary Master Site Development Plan (MSDP) which provides a non-statutory policy framework for a Religious Assembly use on the subject property.

Division: 5
Roll: 06507011
File: PL20200015 and
PL20220088
Printed: May 26, 2022
Legal: Lot:1 Plan:0010744
within SW-07-26-01-W05M





Development Proposal

Redesignation & MSDP Proposal

To redesignate the subject lands from Residential, Rural District (R-RUR) to Special, Public Services District (S-PUB) to accommodate a Religious Assembly use.

&

To support the Sri Lankan Buddhist Society Calgary Master Site Development Plan (MSDP) which provides a non-statutory policy framework for a Religious Assembly use on the subject property.

R-RUR → S-PUB

CALGARY

MOUNTAIN VIEW HILLS

PARK LANE



Division: 5
Roll: 06507011
File: PL20200015 and
PL20220088
Printed: May 26, 2022
Legal: Lot:1 Plan:0010744
within SW-07-26-01-W05M



Environmental

Redesignation & MSDP Proposal

To redesignate the subject lands from Residential, Rural District (R-RUR) to Special, Public Services District (S-PUB) to accommodate a Religious Assembly use.

&

To support the Sri Lankan Buddhist Society Calgary Master Site Development Plan (MSDP) which

-  Subject Lands
-  Contour - 2 meters
-  Riparian Setbacks
-  Alberta Wetland Inventory
-  Surface Water

Division: 5
Roll: 06507011
File: PL20200015 and
PL20220088
Printed: May 26, 2022
Legal: Lot:1 Plan:0010744
within SW-07-26-01-W05M



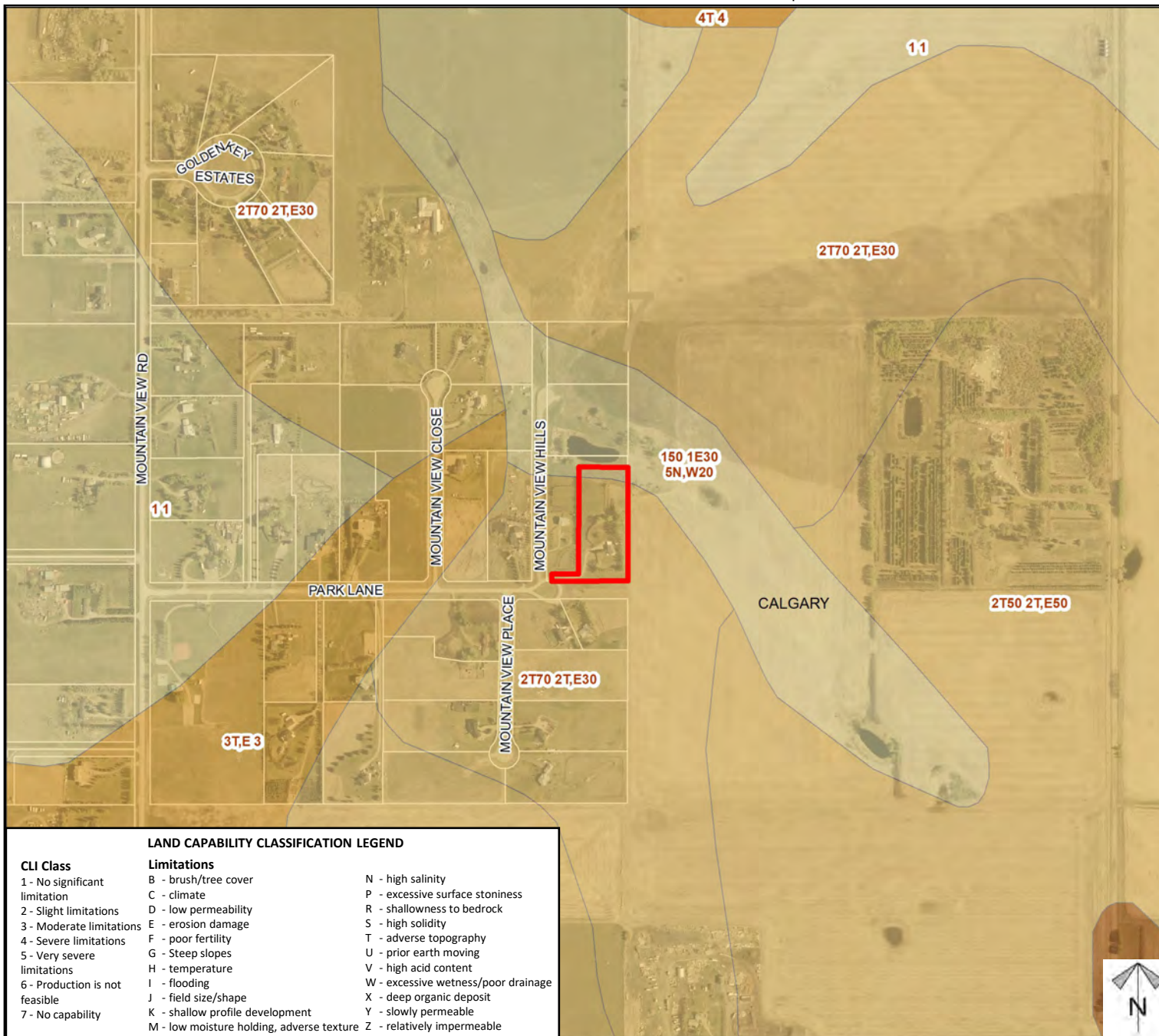
Soil Classifications

Redesignation & MSDP Proposal

To redesignate the subject lands from Residential, Rural District (R-RUR) to Special, Public Services District (S-PUB) to accommodate a Religious Assembly use.

&

To support the Sri Lankan Buddhist Society Calgary Master Site Development Plan (MSDP) which provides a non-statutory policy framework for a Religious Assembly use on the subject property.



LAND CAPABILITY CLASSIFICATION LEGEND

CLI Class

- 1 - No significant limitation
- 2 - Slight limitations
- 3 - Moderate limitations
- 4 - Severe limitations
- 5 - Very severe limitations
- 6 - Production is not feasible
- 7 - No capability

Limitations

- B - brush/tree cover
- C - climate
- D - low permeability
- E - erosion damage
- F - poor fertility
- G - Steep slopes
- H - temperature
- I - flooding
- J - field size/shape
- K - shallow profile development
- M - low moisture holding, adverse texture
- N - high salinity
- P - excessive surface stoniness
- R - shallowness to bedrock
- S - high solidity
- T - adverse topography
- U - prior earth moving
- V - high acid content
- W - excessive wetness/poor drainage
- X - deep organic deposit
- Y - slowly permeable
- Z - relatively impermeable

Division: 5

Roll: 06507011

File: PL20200015 and
PL20220088

Printed: May 26, 2022

Legal: Lot:1 Plan:0010744
within SW-07-26-01-W05M



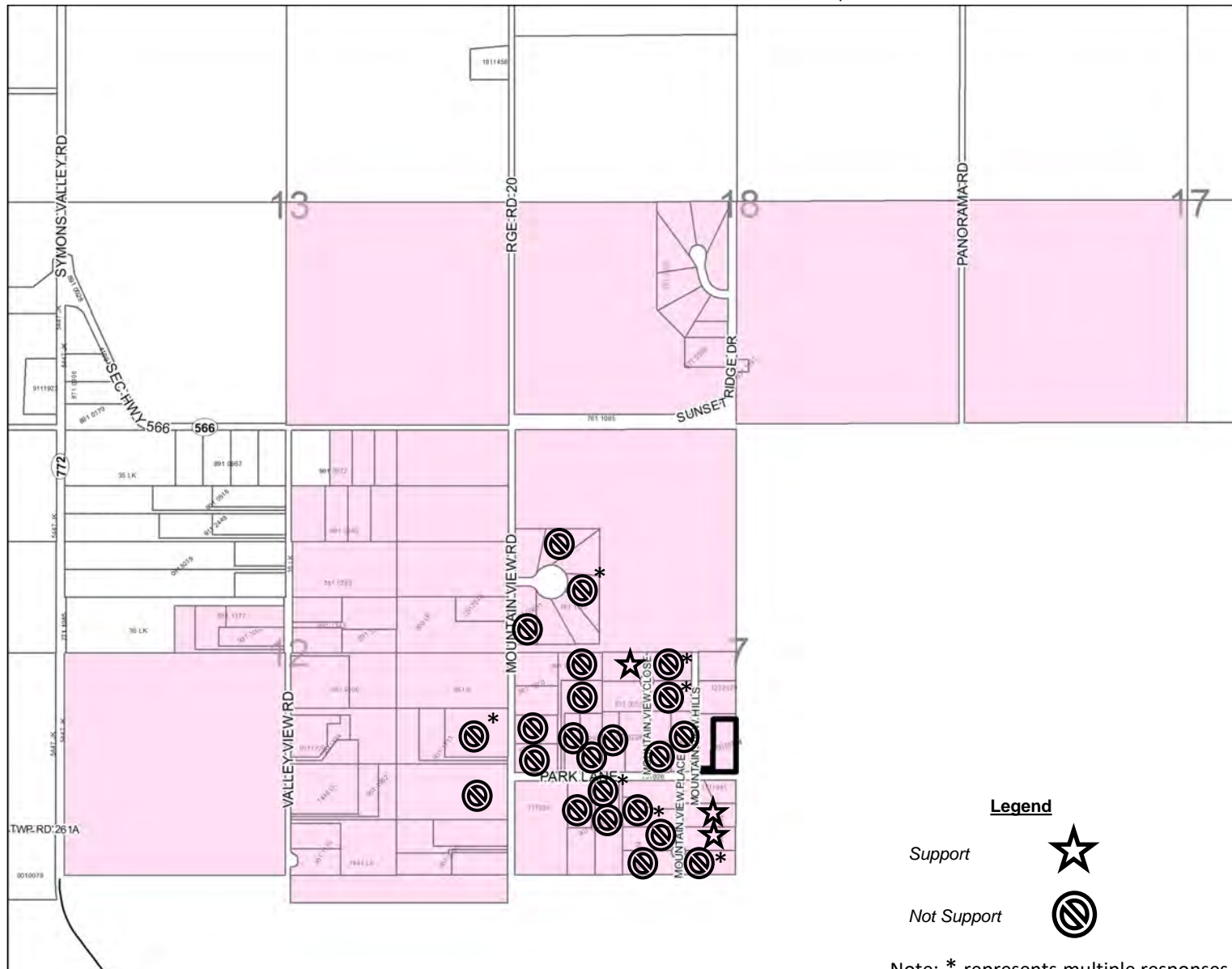
Landowner Circulation Area

Redesignation & MSDP Proposal

To redesignate the subject lands from Residential, Rural District (R-RUR) to Special, Public Services District (S-PUB) to accommodate a Religious Assembly use.

&

To support the Sri Lankan Buddhist Society Calgary Master Site Development Plan (MSDP) which provides a non-statutory policy framework for a Religious Assembly use on the subject property.



Note: First two digits of the Plan Number indicate the year of subdivision registration.

Plan numbers that include letters were registered before 1973 and do not reference a year.

Legend

Support



Not Support



Note: * represents multiple responses received from the same parcel

Division: 5
Roll: 06507011
File: PL20200015 and
PL20220088
Printed: May 26, 2022
Legal: Lot:1 Plan:0010744
within SW-07-26-01-W05M

