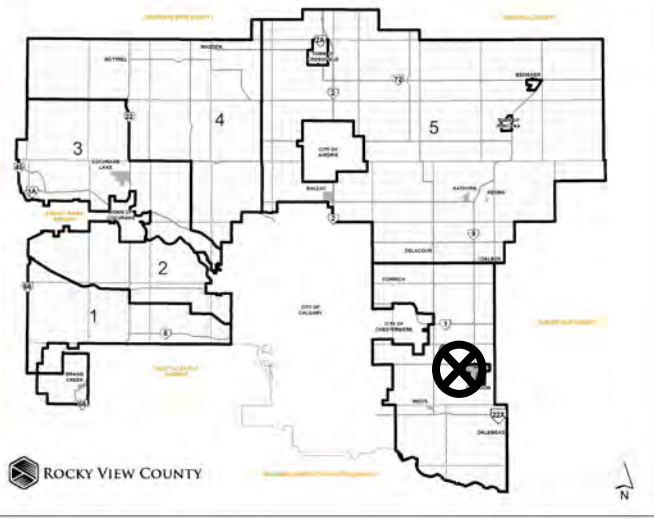


Redesignation Proposal

To redesignate a portion of SE-21-23-27-W04M from Agriculture, General District (A-GEN) to Industrial, Light District (I-LHT) to facilitate subdivision of a ± 45.0 acre (± 18.2 hectare) parcel with an ± 80.0 acre (± 32.37 hectare) remainder.

Division: 6
Roll: 03221001
File: PL20190179
Printed: Sep 7, 2022
Legal: A portion of SE-21-23-
27-W04M





Development Proposal

Redesignation Proposal

To redesignate a portion of SE-21-23-27-W04M from Agriculture, General District (A-GEN) to Industrial, Light District (I-LHT) to facilitate subdivision of a ± 45.0 acre (± 18.2 hectare) parcel with an ± 80.0 acre (± 32.37 hectare) remainder.

A-GEN
Remainder
 ± 32.37 ha
(± 80.00 ac)

A-GEN \rightarrow I-LHT
 ± 18.20 ha
(± 45.00 ac)
Lot 1

LANGDON

VALE VIEW RD

TWP RD 233



Division: 6

Roll: 03221001

File: PL20190179

Printed: Sep 7, 2022

Legal: A portion of SE-21-23-27-W04M



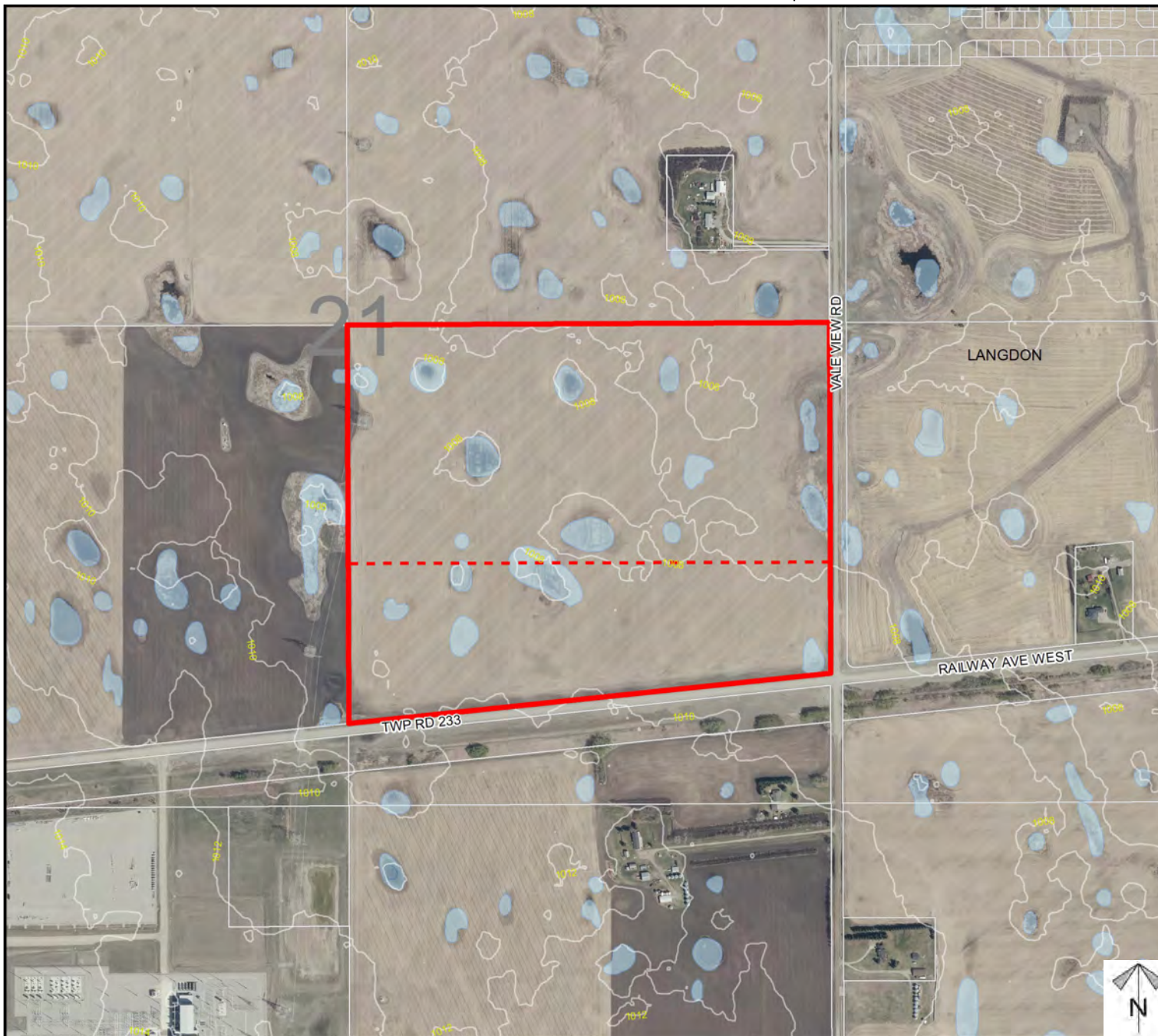
Environmental

Redesignation Proposal

To redesignate a portion of SE-21-23-27-W04M from Agriculture, General District (A-GEN) to Industrial, Light District (I-LHT) to facilitate subdivision of a ± 45.0 acre (± 18.2 hectare) parcel with an ± 80.0 acre (± 32.37 hectare) remainder.

-  Subject Lands
-  Contour - 2 meters
-  Riparian Setbacks
-  Alberta Wetland Inventory
-  Surface Water

Division: 6
 Roll: 03221001
 File: PL20190179
 Printed: Sep 7, 2022
 Legal: A portion of SE-21-23-27-W04M

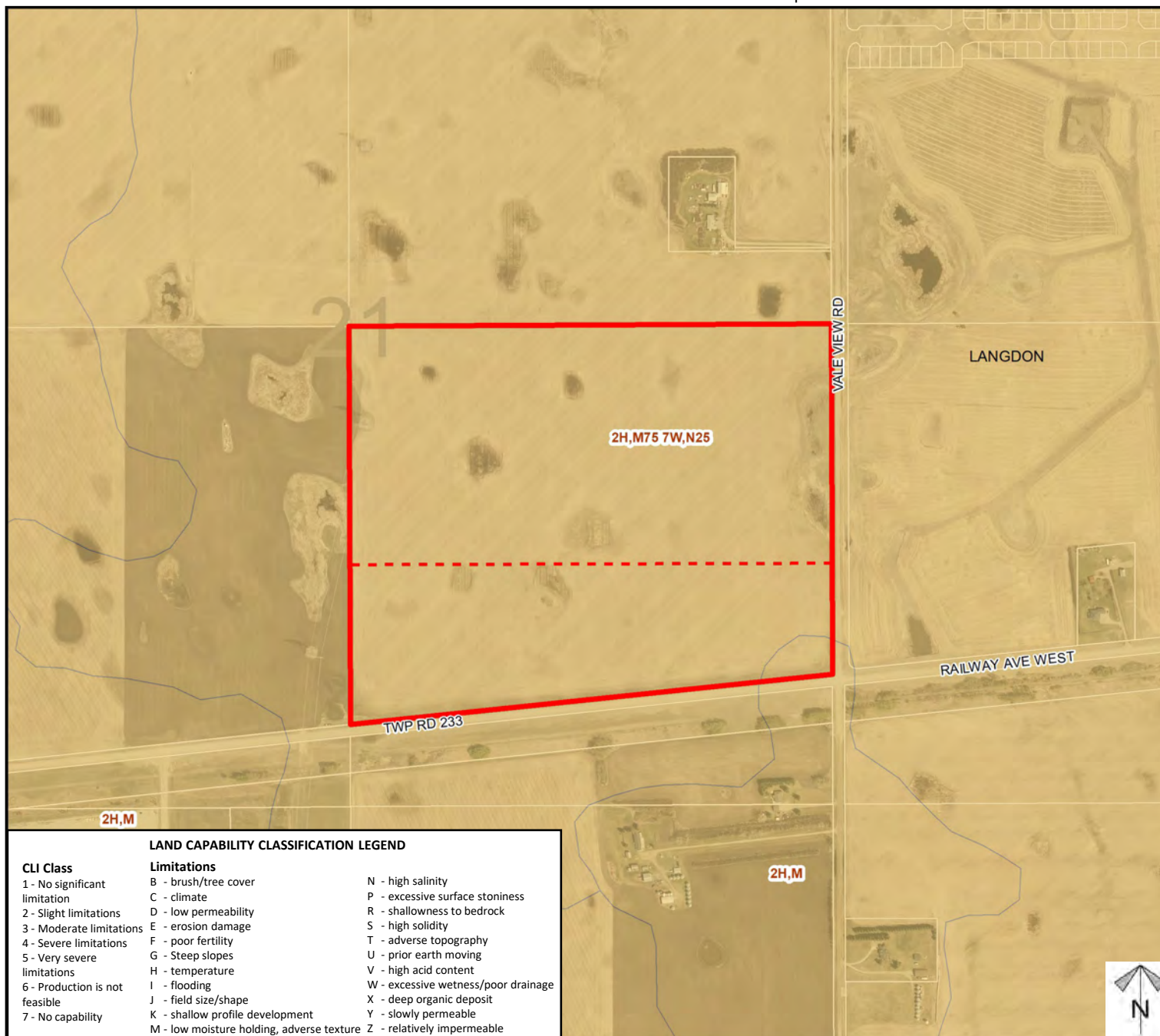




Soil Classifications

Redesignation Proposal

To redesignate a portion of SE-21-23-27-W04M from Agriculture, General District (A-GEN) to Industrial, Light District (I-LHT) to facilitate subdivision of a ± 45.0 acre (± 18.2 hectare) parcel with an ± 80.0 acre (± 32.37 hectare) remainder.



LAND CAPABILITY CLASSIFICATION LEGEND

CLI Class

- 1 - No significant limitation
- 2 - Slight limitations
- 3 - Moderate limitations
- 4 - Severe limitations
- 5 - Very severe limitations
- 6 - Production is not feasible
- 7 - No capability

Limitations

- B - brush/tree cover
- C - climate
- D - low permeability
- E - erosion damage
- F - poor fertility
- G - Steep slopes
- H - temperature
- I - flooding
- J - field size/shape
- K - shallow profile development
- M - low moisture holding, adverse texture
- N - high salinity
- P - excessive surface stoniness
- R - shallowness to bedrock
- S - high solidity
- T - adverse topography
- U - prior earth moving
- V - high acid content
- W - excessive wetness/poor drainage
- X - deep organic deposit
- Y - slowly permeable
- Z - relatively impermeable

Division: 6

Roll: 03221001

File: PL20190179

Printed: Sep 7, 2022

Legal: A portion of SE-21-23-27-W04M



Landowner Circulation Area

Redesignation Proposal

To redesignate a portion of SE-21-23-27-W04M from Agriculture, General District (A-GEN) to Industrial, Light District (I-LHT) to facilitate subdivision of a ± 45.0 acre (± 18.2 hectare) parcel with an ± 80.0 acre (± 32.37 hectare) remainder.

Legend

Support



Not Support



Division: 6

Roll: 03221001

File: PL20190179

Printed: Sep 7, 2022

Legal: A portion of SE-21-23-27-W04M

