

## Redesignation Proposal

To redesignate the subject lands from Agriculture, General District (A-GEN) to Residential, Rural District (R-RUR) in order to facilitate the creation of a  $\pm 2.87$  hectare ( $\pm 7.1$  acre) parcel with  $\pm 22.79$  hectare ( $\pm 56.32$  acre) remainder.

Division: 5  
Roll: 06226001  
File: PL20220083  
Printed: May 19, 2022  
Legal: A portion of SE-26-26-27-W04M





## Development Proposal

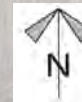
### Redesignation Proposal

To redesignate the subject lands from Agriculture, General District (A-GEN) to Residential, Rural District (R-RUR) in order to facilitate the creation of a  $\pm 2.87$  hectare ( $\pm 7.1$  acre) parcel with  $\pm 22.79$  hectare ( $\pm 56.32$  acre) remainder.

A-GEN  
22.79 ha

A-GEN to  
R-RUR  
2.87 ha

TWP RD 264



Division: 5  
Roll: 06226001  
File: PL20220083  
Printed: May 19, 2022  
Legal: A portion of SE-26-26-27-W04M





## Environmental

### Redesignation Proposal

To redesignate the subject lands from Agriculture, General District (A-GEN) to Residential, Rural District (R-RUR) in order to facilitate the creation of a  $\pm 2.87$  hectare ( $\pm 7.1$  acre) parcel with  $\pm 22.79$  hectare ( $\pm 56.32$  acre) remainder.



- Subject Lands
- Contour - 2 meters
- Riparian Setbacks
- Alberta Wetland Inventory
- Surface Water

Division: 5  
 Roll: 06226001  
 File: PL20220083  
 Printed: May 19, 2022  
 Legal: A portion of SE-26-26-27-W04M

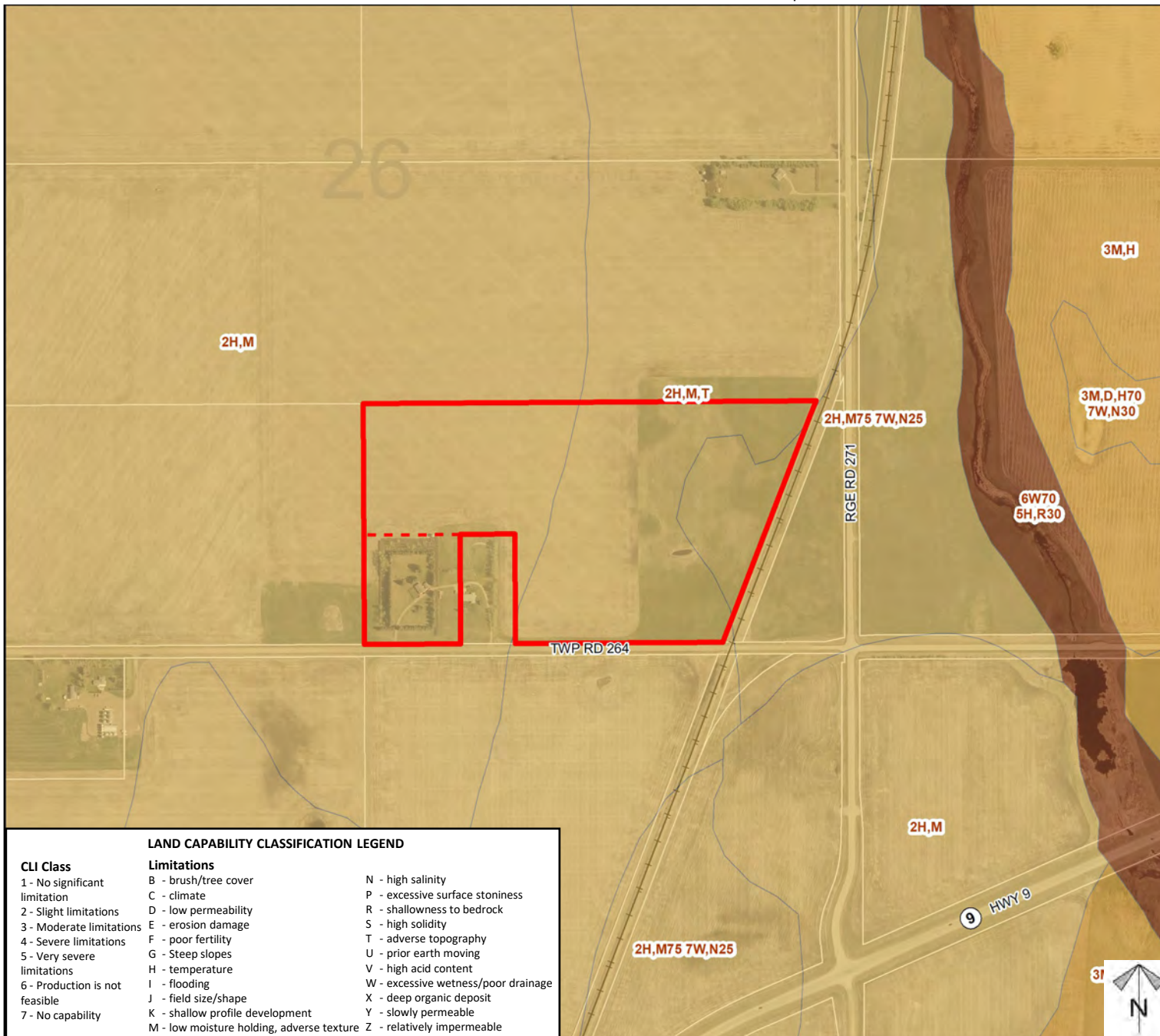




## Soil Classifications

### Redesignation Proposal

To redesignate the subject lands from Agriculture, General District (A-GEN) to Residential, Rural District (R-RUR) in order to facilitate the creation of a  $\pm 2.87$  hectare ( $\pm 7.1$  acre) parcel with  $\pm 22.79$  hectare ( $\pm 56.32$  acre) remainder.



Division: 5  
Roll: 06226001  
File: PL20220083  
Printed: May 19, 2022  
Legal: A portion of SE-26-26-27-W04M



## Landowner Circulation Area

### Redesignation Proposal

To redesignate the subject lands from Agriculture, General District (A-GEN) to Residential, Rural District (R-RUR) in order to facilitate the creation of a  $\pm 2.87$  hectare ( $\pm 7.1$  acre) parcel with  $\pm 22.79$  hectare ( $\pm 56.32$  acre) remainder.

### Legend

Support



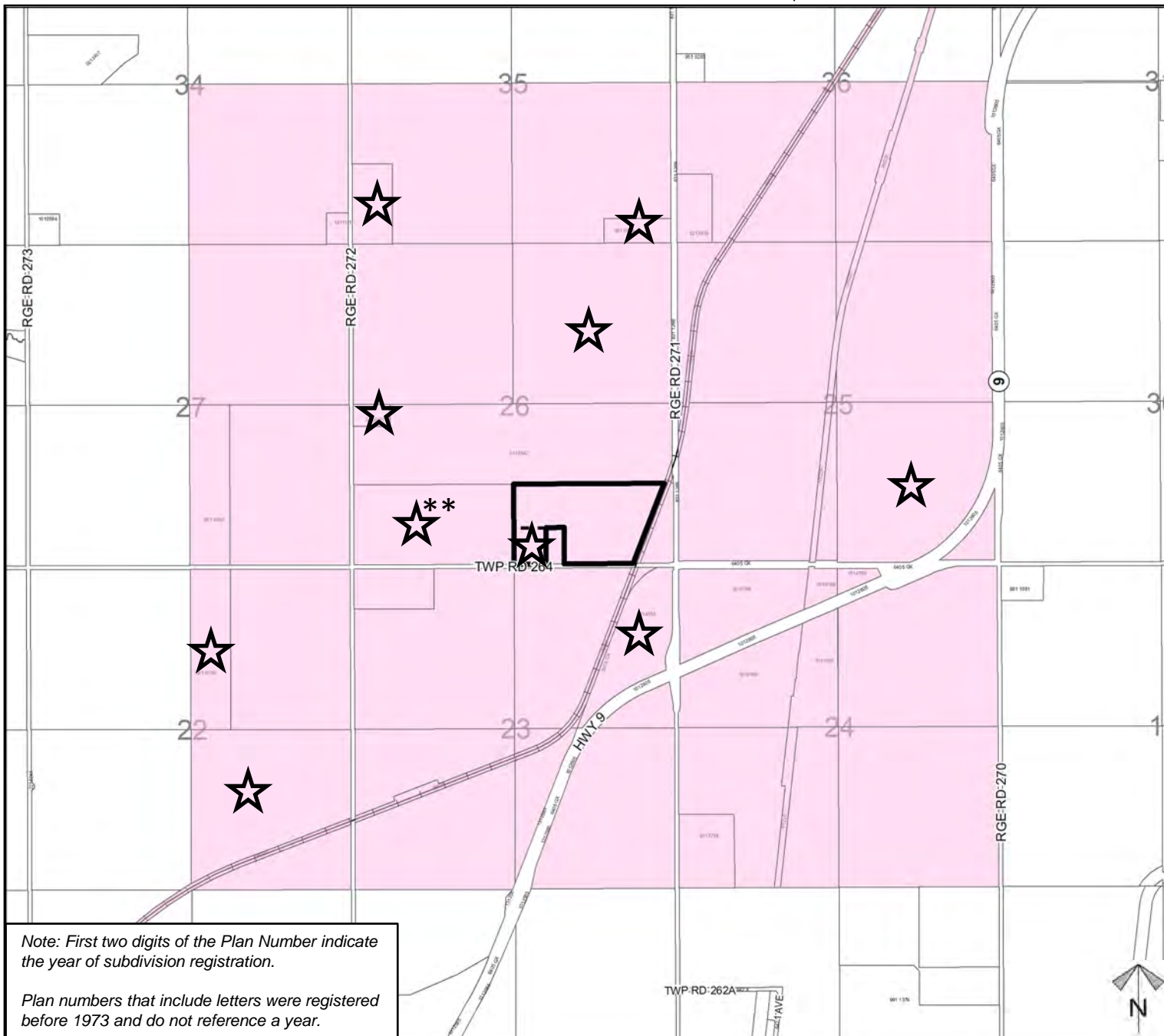
Not Support



**\*\*** multiple responses from same address

14 respondents from outside circulation area.

Division: 5  
Roll: 06226001  
File: PL20220083  
Printed: May 19, 2022  
Legal: A portion of SE-26-26-27-W04M



Note: First two digits of the Plan Number indicate the year of subdivision registration.

Plan numbers that include letters were registered before 1973 and do not reference a year.