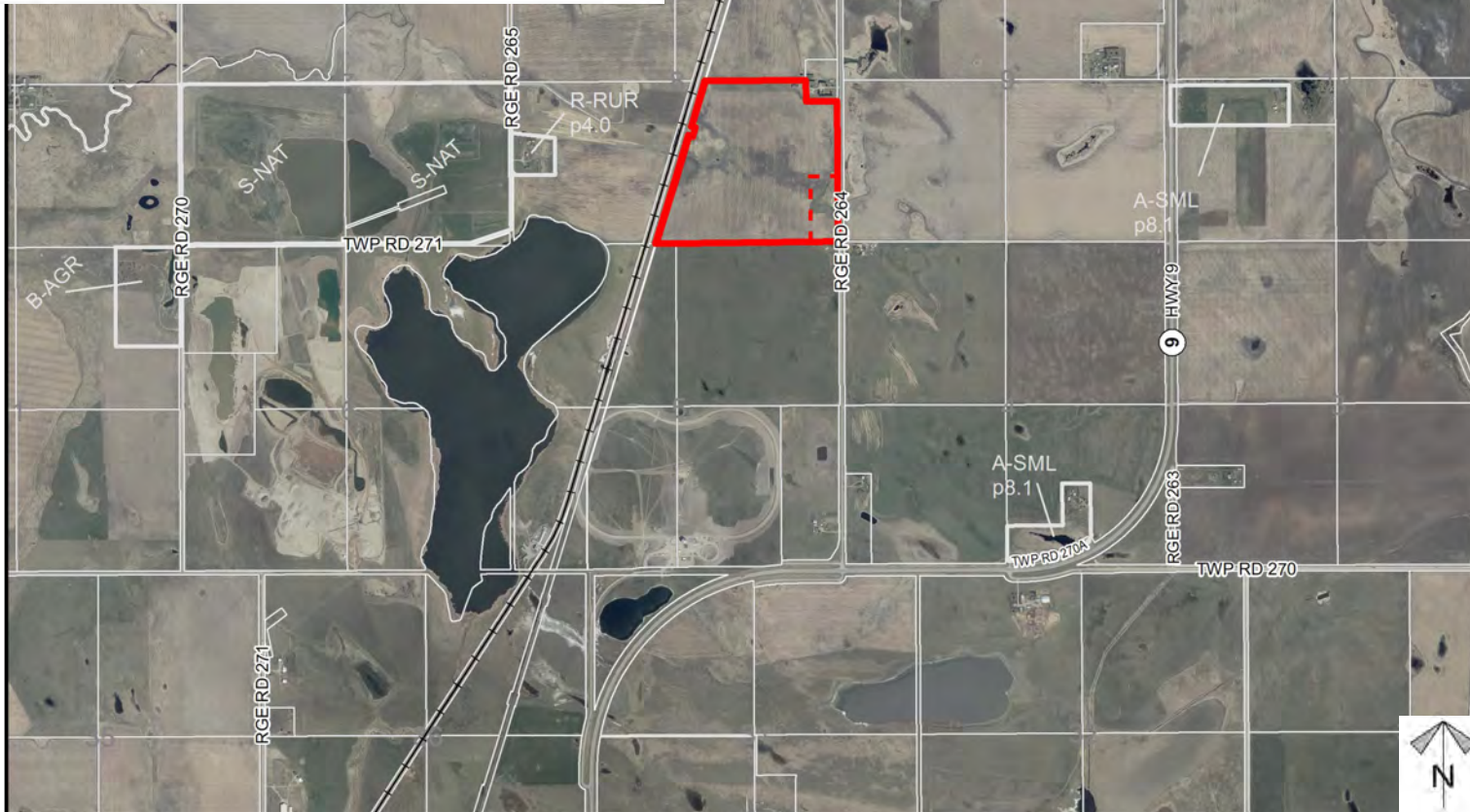
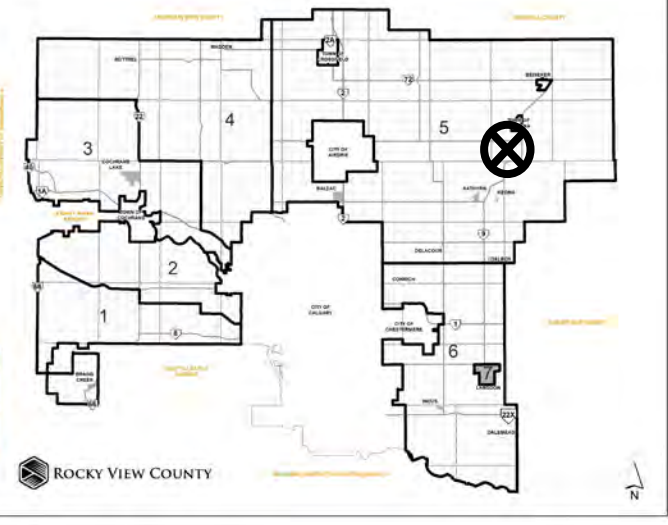




Location & Context

Redesignation Proposal

To redesignate the subject lands from Agricultural, General District (A-GEN) to Residential, Rural District (R-RUR) to facilitate the creation of a ± 4.35 hectare (± 10.75 acre) parcel with a ± 56.42 hectare (± 139.41 acre) remainder.



Division: 5
Roll: 07108011
File: PL20220107
Printed: June 24, 2022
Legal: A portion of S-08-27-26-W04M

Development Proposal

Redesignation Proposal

To redesignate the subject lands from Agricultural, General District (A-GEN) to Residential, Rural District (R-RUR) to facilitate the creation of a ± 4.35 hectare (± 10.75 acre) parcel with a ± 56.42 hectare (± 139.41 acre) remainder.



Division: 5
Roll: 07108011
File: PL20220107
Printed: June 24, 2022
Legal: A portion of S-08-27-
26-W04M



Environmental

Redesignation Proposal

To redesignate the subject lands from Agricultural, General District (A-GEN) to Residential, Rural District (R-RUR) to facilitate the creation of a ± 4.35 hectare (± 10.75 acre) parcel with a ± 56.42 hectare (± 139.41 acre) remainder.

-  Subject Lands
-  Contour - 2 meters
-  Riparian Setbacks
-  Alberta Wetland Inventory
-  Surface Water

Division: 5
Roll: 07108011
File: PL20220107
Printed: June 24, 2022
Legal: A portion of S-08-27-26-W04M

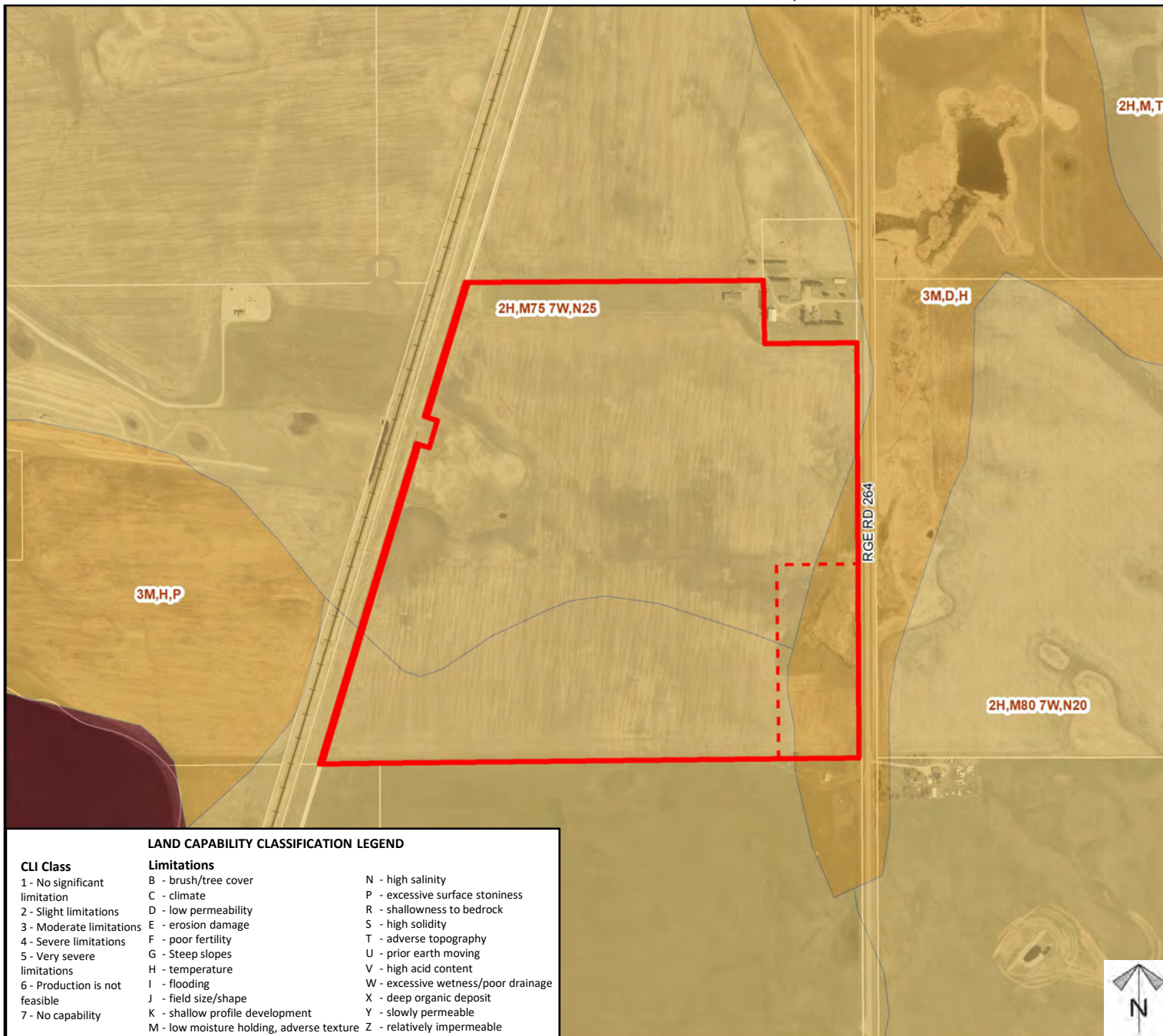




Soil Classifications

Redesignation Proposal

To redesignate the subject lands from Agricultural, General District (A-GEN) to Residential, Rural District (R-RUR) to facilitate the creation of a ± 4.35 hectare (± 10.75 acre) parcel with a ± 56.42 hectare (± 139.41 acre) remainder.



LAND CAPABILITY CLASSIFICATION LEGEND

CLI Class

- 1 - No significant limitation
- 2 - Slight limitations
- 3 - Moderate limitations
- 4 - Severe limitations
- 5 - Very severe limitations
- 6 - Production is not feasible
- 7 - No capability

Limitations

- B - brush/tree cover
- C - climate
- D - low permeability
- E - erosion damage
- F - poor fertility
- G - Steep slopes
- H - temperature
- I - flooding
- J - field size/shape
- K - shallow profile development
- M - low moisture holding, adverse texture
- N - high salinity
- P - excessive surface stoniness
- R - shallowness to bedrock
- S - high solidity
- T - adverse topography
- U - prior earth moving
- V - high acid content
- W - excessive wetness/poor drainage
- X - deep organic deposit
- Y - slowly permeable
- Z - relatively impermeable

Division: 5

Roll: 07108011

File: PL20220107

Printed: June 24, 2022

Legal: A portion of S-08-27-26-W04M



Landowner Circulation Area

Redesignation Proposal

To redesignate the subject lands from Agricultural, General District (A-GEN) to Residential, Rural District (R-RUR) to facilitate the creation of a ± 4.35 hectare (± 10.75 acre) parcel with a ± 56.42 hectare (± 139.41 acre) remainder.

Legend

(7 Total) Support



(2) OFFMAP

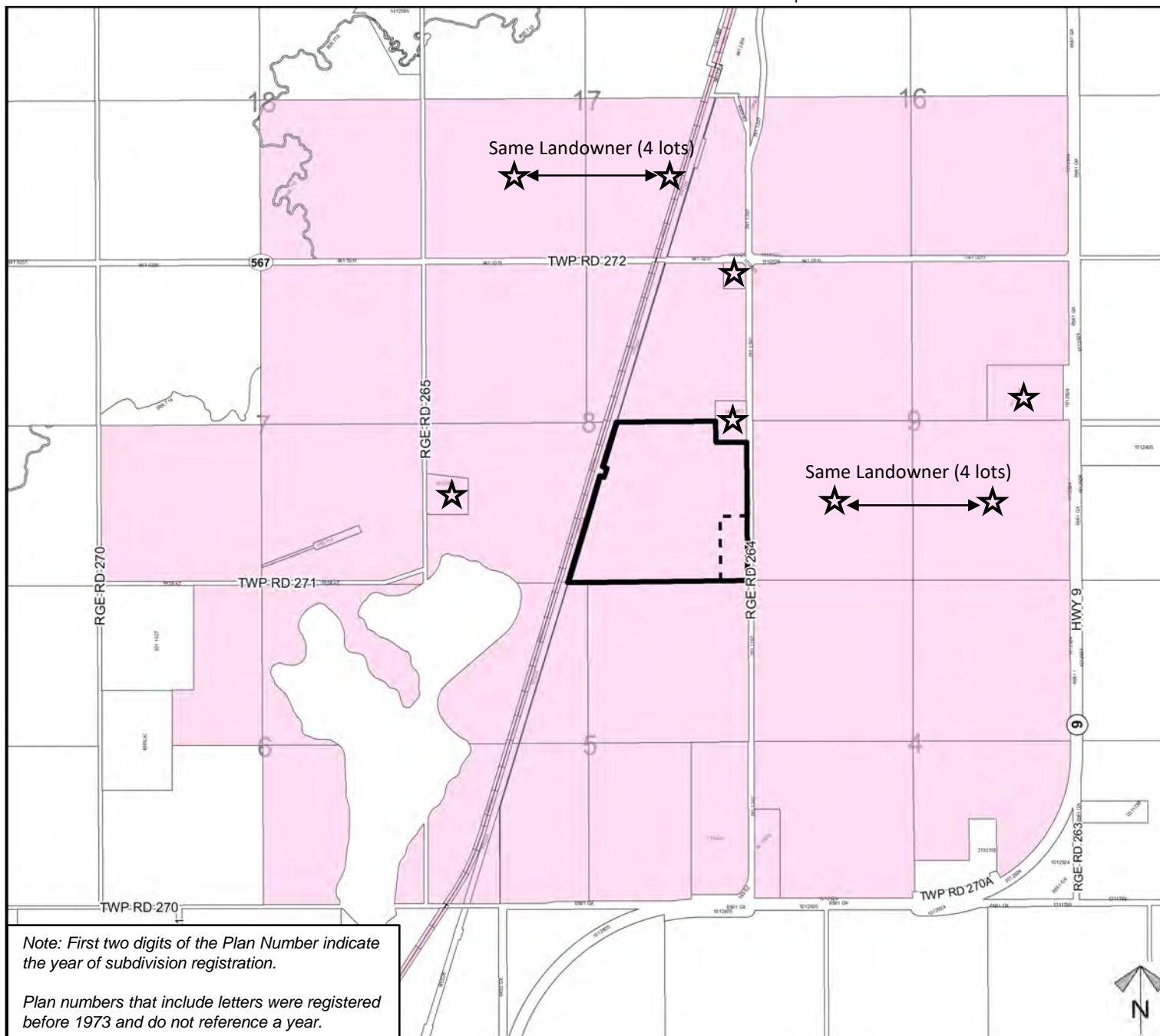
(2) Range Road 272

Non-Support



Note: First two digits of the Plan Number indicate the year of subdivision registration.

Plan numbers that include letters were registered before 1973 and do not reference a year.



Division: 5
Roll: 07108011
File: PL20220107
Printed: June 24, 2022
Legal: A portion of S-08-27-26-W04M