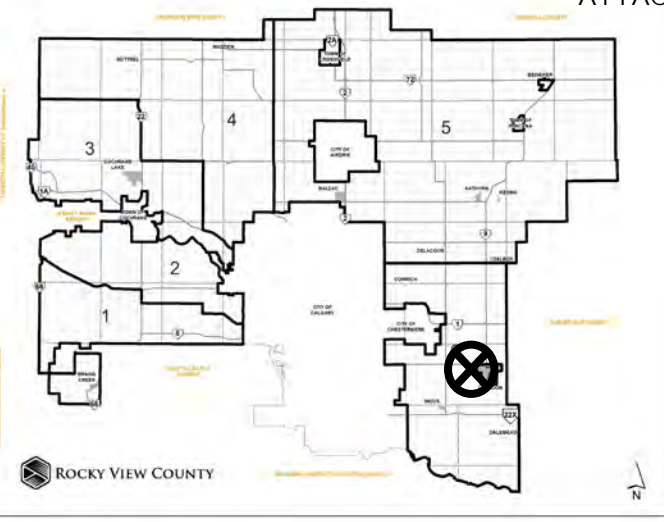


## Location & Context

### Redesignation Proposal

To redesignate a portion of SE-21-23-27-W04M from Agriculture, General District (A-GEN) to Industrial, Light District (I-LHT) to facilitate subdivision of a  $\pm 45.0$  acre ( $\pm 18.2$  hectare) parcel with an  $\pm 80.0$  acre ( $\pm 32.37$  hectare) remainder.







## Development Proposal

### Redesignation Proposal

To redesignate a portion of SE-21-23-27-W04M from Agriculture, General District (A-GEN) to Industrial, Light District (I-LHT) to facilitate subdivision of a  $\pm 45.0$  acre ( $\pm 18.2$  hectare) parcel with an  $\pm 80.0$  acre ( $\pm 32.37$  hectare) remainder.



Division: 6  
Roll: 03221001  
File: PL20190179  
Printed: Sep 7, 2022  
Legal: A portion of SE-21-23-27-W04M





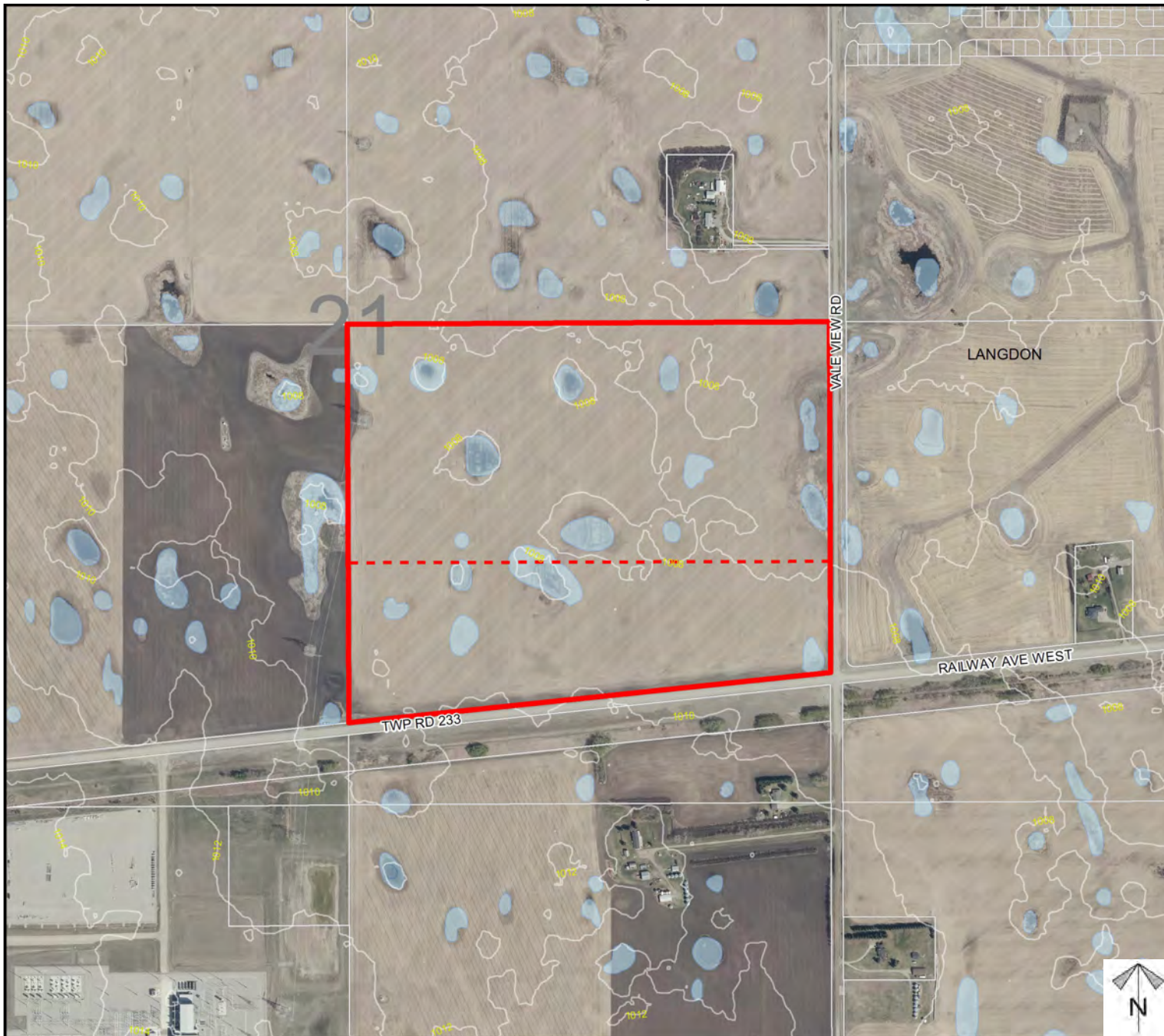
## Environmental

### Redesignation Proposal

To redesignate a portion of SE-21-23-27-W04M from Agriculture, General District (A-GEN) to Industrial, Light District (I-LHT) to facilitate subdivision of a  $\pm 45.0$  acre ( $\pm 18.2$  hectare) parcel with an  $\pm 80.0$  acre ( $\pm 32.37$  hectare) remainder.

-  Subject Lands
-  Contour - 2 meters
-  Riparian Setbacks
-  Alberta Wetland Inventory
-  Surface Water

Division: 6  
 Roll: 03221001  
 File: PL20190179  
 Printed: Sep 7, 2022  
 Legal: A portion of SE-21-23-27-W04M

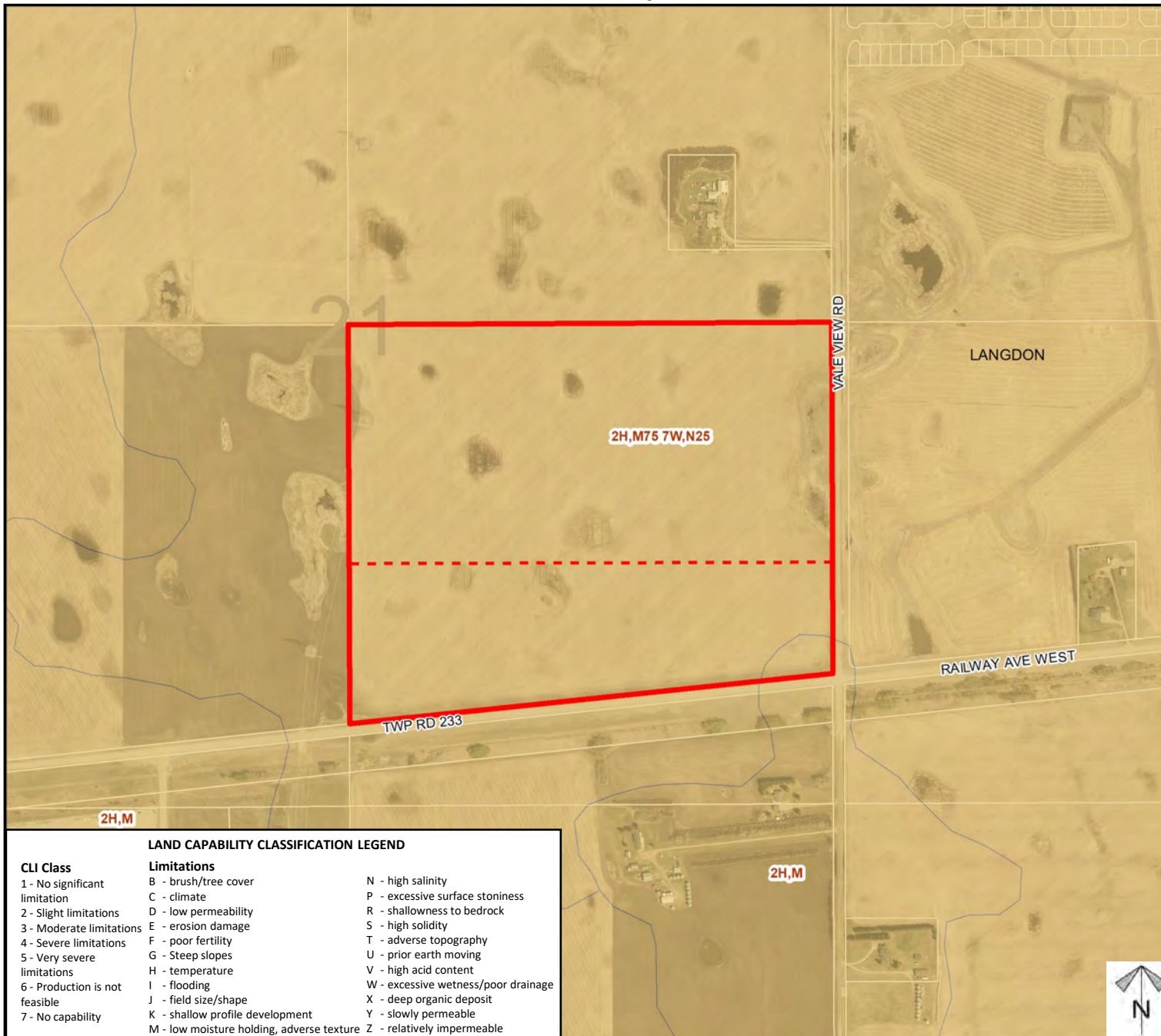




## Soil Classifications

### Redesignation Proposal

To redesignate a portion of SE-21-23-27-W04M from Agriculture, General District (A-GEN) to Industrial, Light District (I-LHT) to facilitate subdivision of a  $\pm 45.0$  acre ( $\pm 18.2$  hectare) parcel with an  $\pm 80.0$  acre ( $\pm 32.37$  hectare) remainder.



#### LAND CAPABILITY CLASSIFICATION LEGEND

##### CLI Class

- 1 - No significant limitation
- 2 - Slight limitations
- 3 - Moderate limitations
- 4 - Severe limitations
- 5 - Very severe limitations
- 6 - Production is not feasible
- 7 - No capability

##### Limitations

- B - brush/tree cover
- C - climate
- D - low permeability
- E - erosion damage
- F - poor fertility
- G - Steep slopes
- H - temperature
- I - flooding
- J - field size/shape
- K - shallow profile development
- M - low moisture holding, adverse texture
- N - high salinity
- P - excessive surface stoniness
- R - shallowness to bedrock
- S - high solidity
- T - adverse topography
- U - prior earth moving
- V - high acid content
- W - excessive wetness/poor drainage
- X - deep organic deposit
- Y - slowly permeable
- Z - relatively impermeable

Division: 6

Roll: 03221001

File: PL20190179

Printed: Sep 7, 2022

Legal: A portion of SE-21-23-27-W04M



## Landowner Circulation Area

### Redesignation Proposal

To redesignate a portion of SE-21-23-27-W04M from Agriculture, General District (A-GEN) to Industrial, Light District (I-LHT) to facilitate subdivision of a  $\pm 45.0$  acre ( $\pm 18.2$  hectare) parcel with an  $\pm 80.0$  acre ( $\pm 32.37$  hectare) remainder.

### Legend

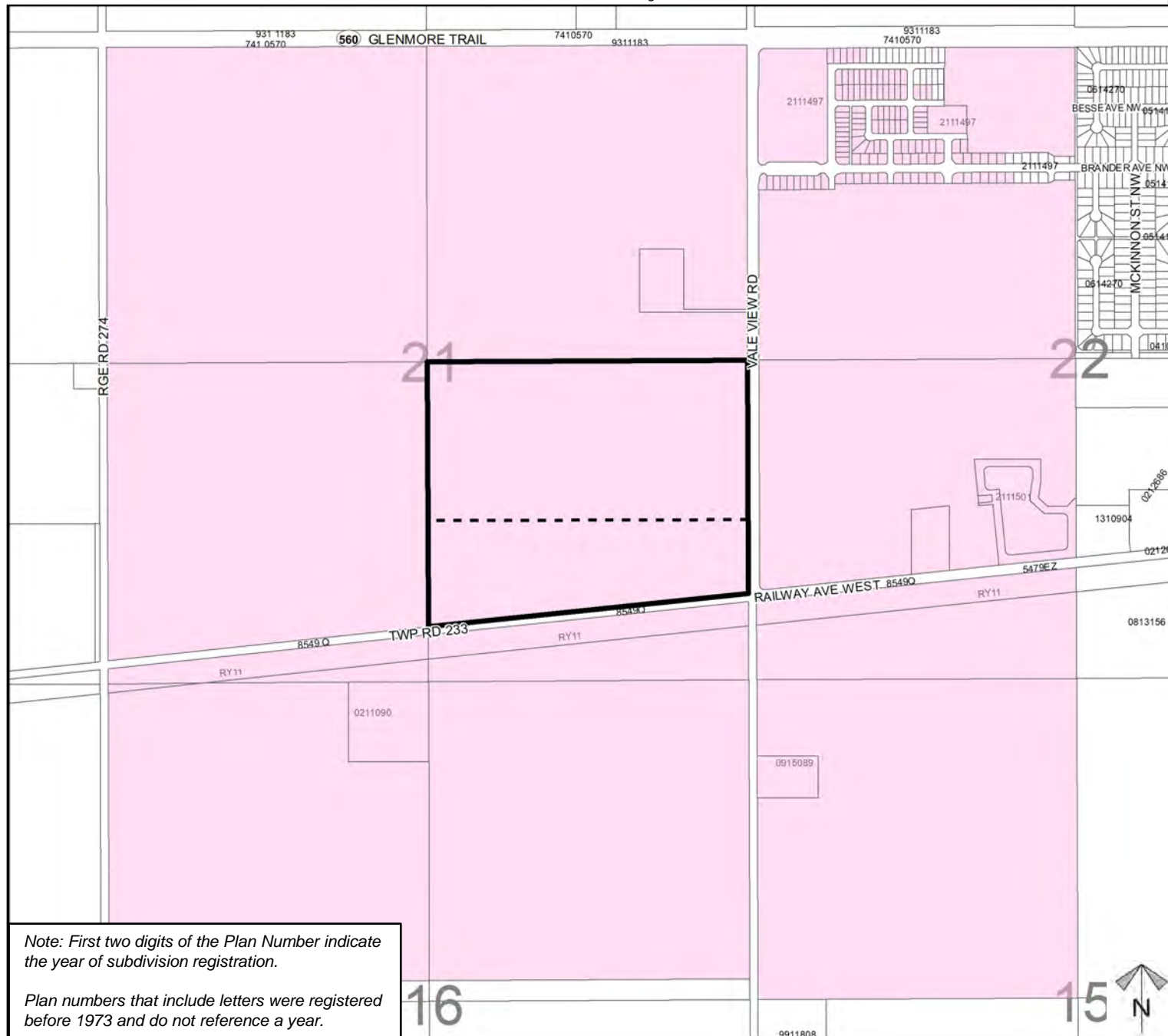
Support



Not Support



Division: 6  
 Roll: 03221001  
 File: PL20190179  
 Printed: Sep 7, 2022  
 Legal: A portion of SE-21-23-27-W04M



Note: First two digits of the Plan Number indicate the year of subdivision registration.

Plan numbers that include letters were registered before 1973 and do not reference a year.