

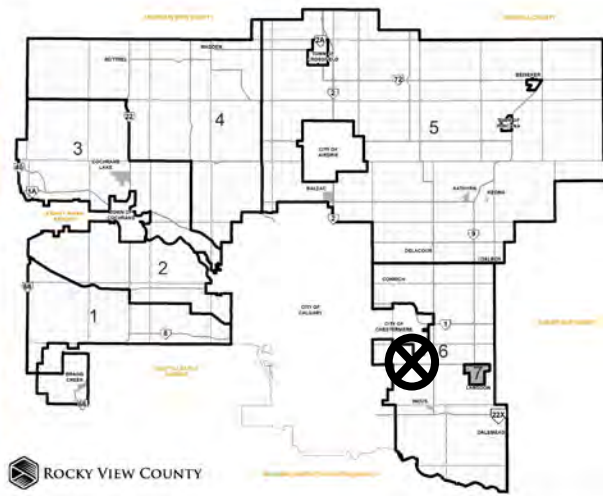


Location & Context

Redesignation Proposal

To redesignate the subject lands from Agricultural, Small Parcel District (A-SML p. 8.1) to Industrial, Light District (I-LHT p. 7.5) to accommodate future industrial development.

Division: 6
Roll: 03322008
File: PL20210187
Printed: Nov 16, 2021
Legal: Lot:2 Block:1
Plan:2010019 within NE-22-23-28-W04M



Development Proposal

Redesignation Proposal

To redesignate the subject lands from Agricultural, Small Parcel District (A-SML p. 8.1) to Industrial, Light District (I-LHT p. 7.5) to accommodate future industrial development.

A-SML p. 8.1 → I-LHT p 7.5
7.57 ha (18.71 ac)

RGE RD 282



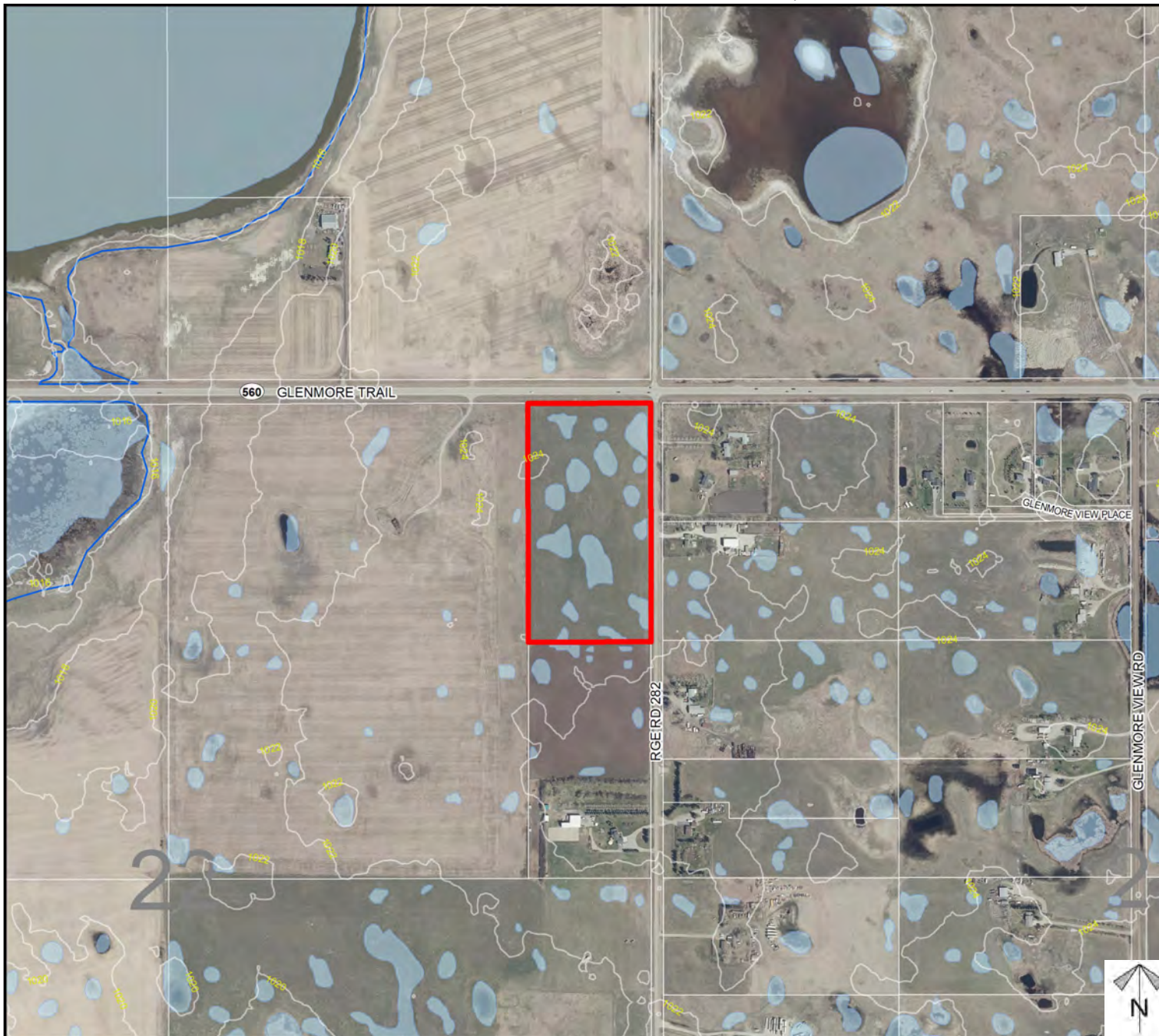
Division: 6
Roll: 03322008
File: PL20210187
Printed: Nov 16, 2021
Legal: Lot:2 Block:1
Plan:2010019 within NE-22-
23-28-W04M



Environmental

Redesignation Proposal

To redesignate the subject lands from Agricultural, Small Parcel District (A-SML p. 8.1) to Industrial, Light District (I-LHT p. 7.5) to accommodate future industrial development.



- Subject Lands
- Contour - 2 meters
- Riparian Setbacks
- Alberta Wetland Inventory
- Surface Water

Division: 6
 Roll: 03322008
 File: PL20210187
 Printed: Nov 16, 2021
 Legal: Lot:2 Block:1
 Plan:2010019 within NE-22-23-28-W04M

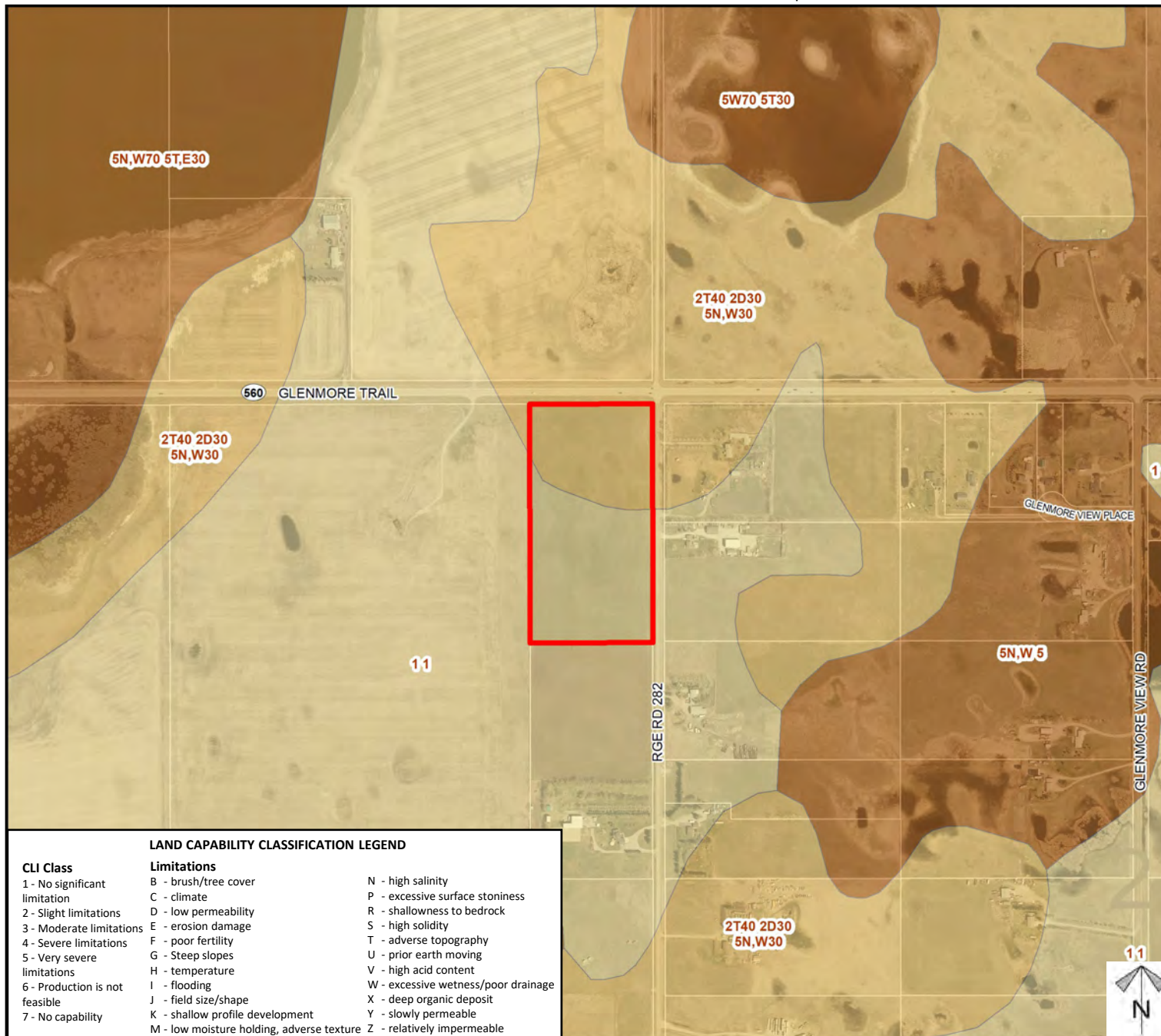




Soil Classifications

Redesignation Proposal

To redesignate the subject lands from Agricultural, Small Parcel District (A-SML p. 8.1) to Industrial, Light District (I-LHT p. 7.5) to accommodate future industrial development.



Division: 6
Roll: 03322008
File: PL20210187
Printed: Nov 16, 2021
Legal: Lot:2 Block:1
Plan:2010019 within NE-22-23-28-W04M



Landowner Circulation Area

Redesignation Proposal

To redesignate the subject lands from Agricultural, Small Parcel District (A-SML p. 8.1) to Industrial, Light District (I-LHT p. 7.5) to accommodate future industrial development.

Legend

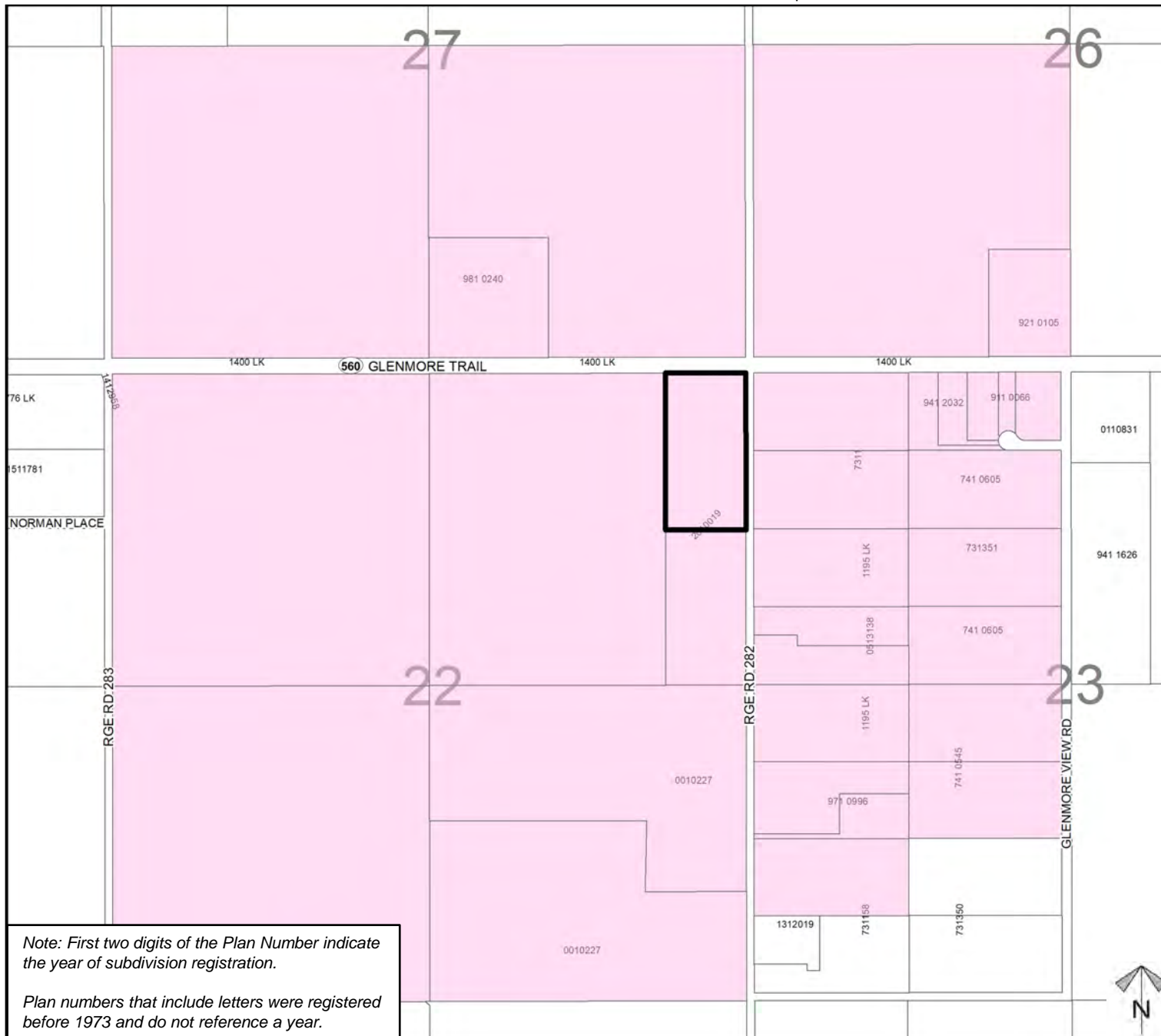
Support



Not Support



Division: 6
Roll: 03322008
File: PL20210187
Printed: Nov 16, 2021
Legal: Lot:2 Block:1
Plan:2010019 within NE-22-23-28-W04M



Note: First two digits of the Plan Number indicate the year of subdivision registration.

Plan numbers that include letters were registered before 1973 and do not reference a year.