

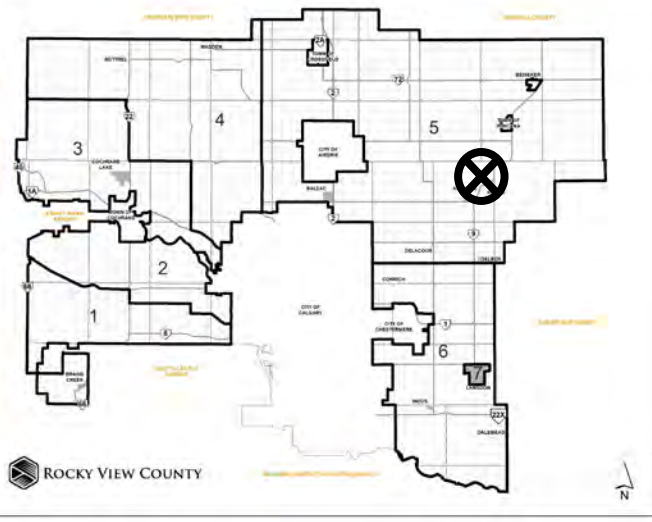


Location & Context

Redesignation Proposal

To redesignate the subject lands from Agriculture, General District (A-GEN) to Residential, Rural District (R-RUR) in order to facilitate the creation of a ± 2.87 hectare (± 7.1 acre) parcel with ± 22.79 hectare (± 56.32 acre) remainder.

Division: 5
Roll: 06226001
File: PL20220083
Printed: May 19, 2022
Legal: A portion of SE-26-26-27-W04M



Development Proposal

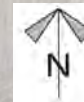
Redesignation Proposal

To redesignate the subject lands from Agriculture, General District (A-GEN) to Residential, Rural District (R-RUR) in order to facilitate the creation of a ± 2.87 hectare (± 7.1 acre) parcel with ± 22.79 hectare (± 56.32 acre) remainder.

A-GEN
22.79 ha

A-GEN to
R-RUR
2.87 ha

TWP RD 264



Division: 5
Roll: 06226001
File: PL20220083
Printed: May 19, 2022
Legal: A portion of SE-26-26-27-W04M



Environmental

Redesignation Proposal

To redesignate the subject lands from Agriculture, General District (A-GEN) to Residential, Rural District (R-RUR) in order to facilitate the creation of a ± 2.87 hectare (± 7.1 acre) parcel with ± 22.79 hectare (± 56.32 acre) remainder.



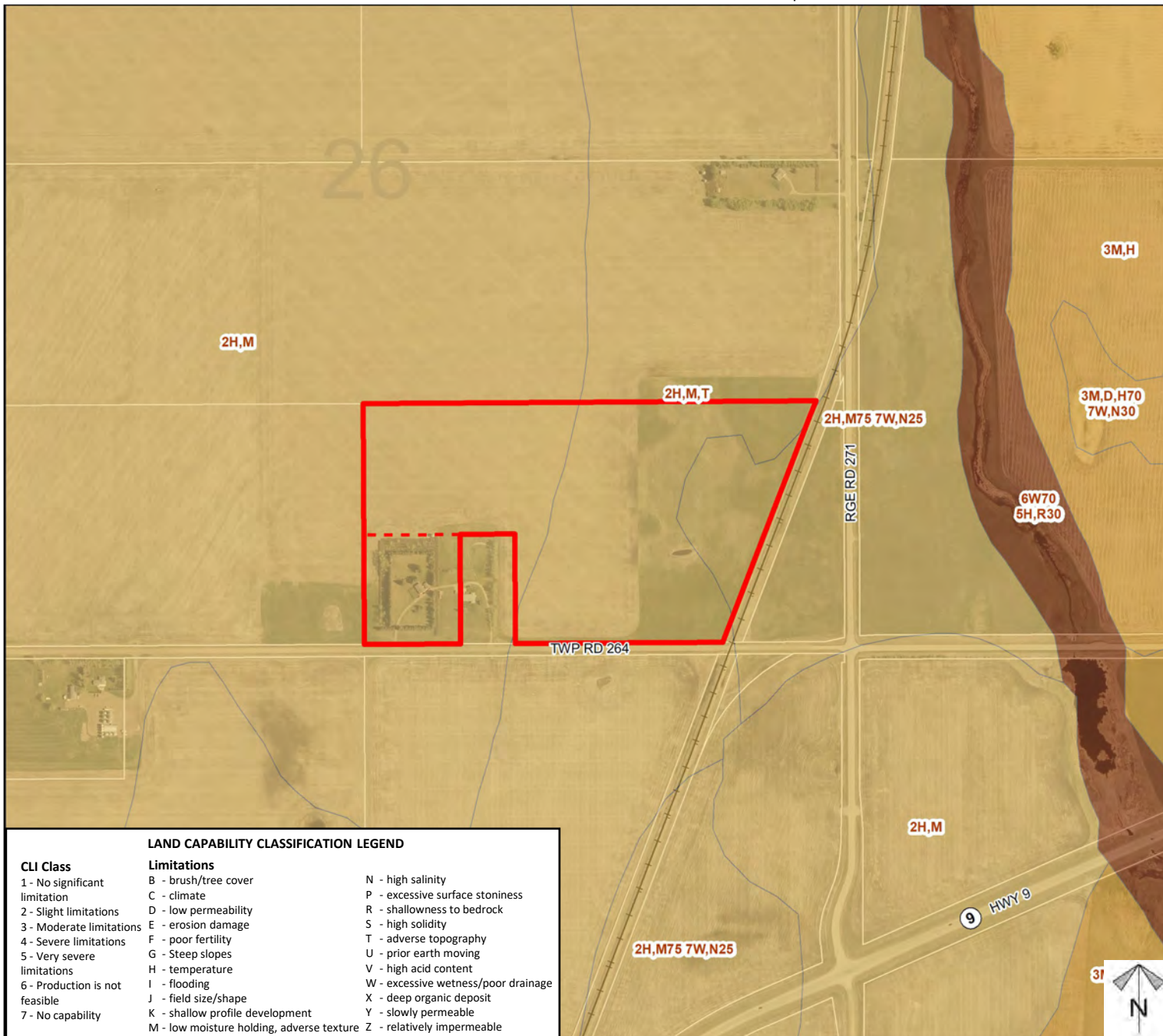
- Subject Lands
- Contour - 2 meters
- Riparian Setbacks
- Alberta Wetland Inventory
- Surface Water

Division: 5
 Roll: 06226001
 File: PL20220083
 Printed: May 19, 2022
 Legal: A portion of SE-26-26-27-W04M

Soil Classifications

Redesignation Proposal

To redesignate the subject lands from Agriculture, General District (A-GEN) to Residential, Rural District (R-RUR) in order to facilitate the creation of a ± 2.87 hectare (± 7.1 acre) parcel with ± 22.79 hectare (± 56.32 acre) remainder.



Division: 5
 Roll: 06226001
 File: PL20220083
 Printed: May 19, 2022
 Legal: A portion of SE-26-26-27-W04M

Landowner Circulation Area

Redesignation Proposal

To redesignate the subject lands from Agriculture, General District (A-GEN) to Residential, Rural District (R-RUR) in order to facilitate the creation of a ± 2.87 hectare (± 7.1 acre) parcel with ± 22.79 hectare (± 56.32 acre) remainder.

Legend

Support

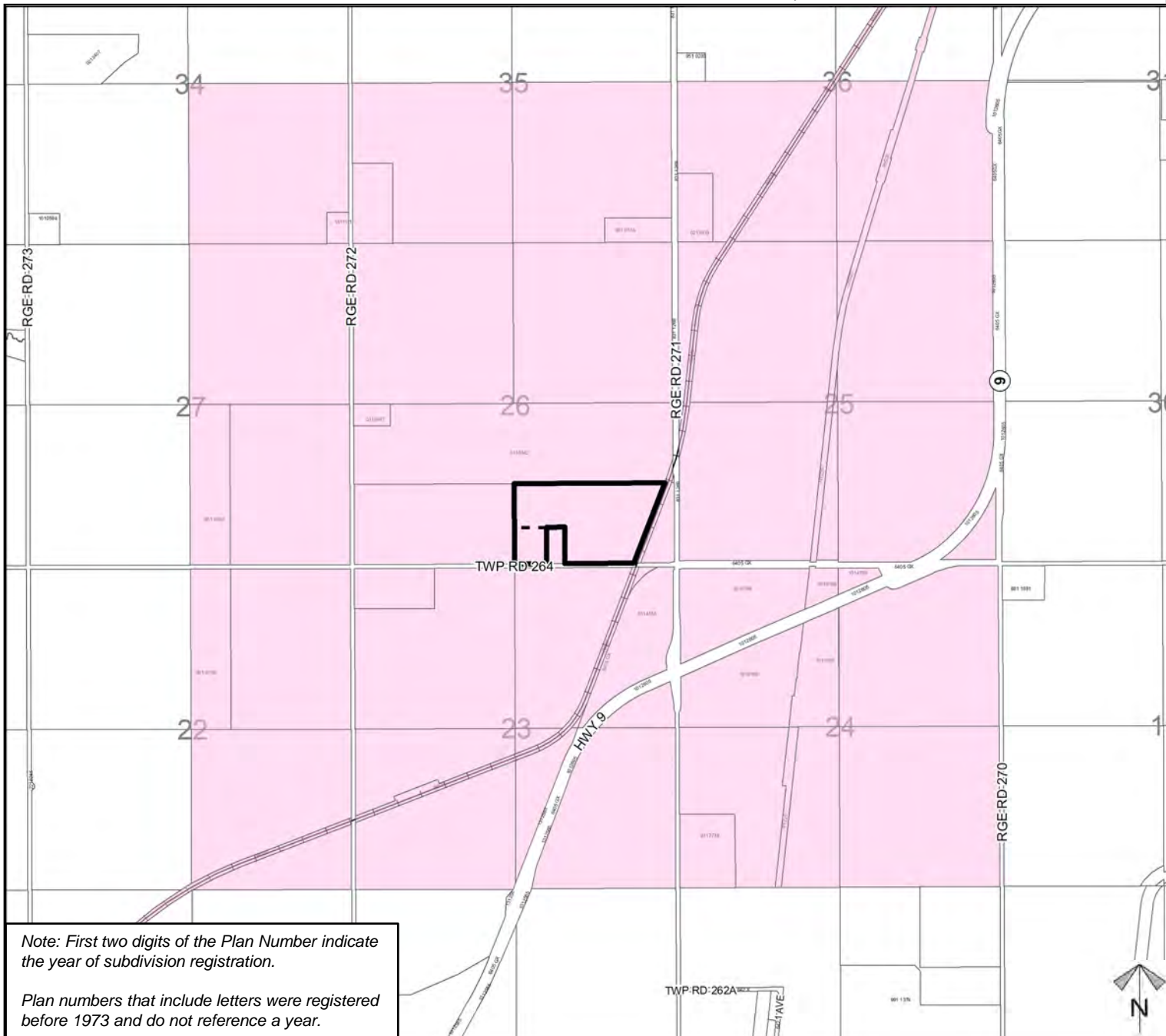


Not Support



Note: First two digits of the Plan Number indicate the year of subdivision registration.

Plan numbers that include letters were registered before 1973 and do not reference a year.



Division: 5
 Roll: 06226001
 File: PL20220083
 Printed: May 19, 2022
 Legal: A portion of SE-26-26-27-W04M