

Location & Context

Concept Plan Proposal (PL20220003)

To adopt the Glendale Road Conceptual Scheme that provides a policy framework to guide future redesignation, subdivision for country residential development within the SE-08-26-03-W05M.

Redesignation Proposal (PL20220004)

To redesignate ± 24.40 ha (± 60.30 ac) of land from A-SML and R-RURp4.0 to R-CRD, S-PRK and S-PUB, to facilitate the development of Phase 1 to create 24 residential lots and 1 public utility lot.

Division: 3

Roll:

06708015/08/09/14/13/03/10
/06

File: PL20220003/

PL20220004

Legal: A portion of SE-08-26-03-W05M

Printed: Feb 2, 2022

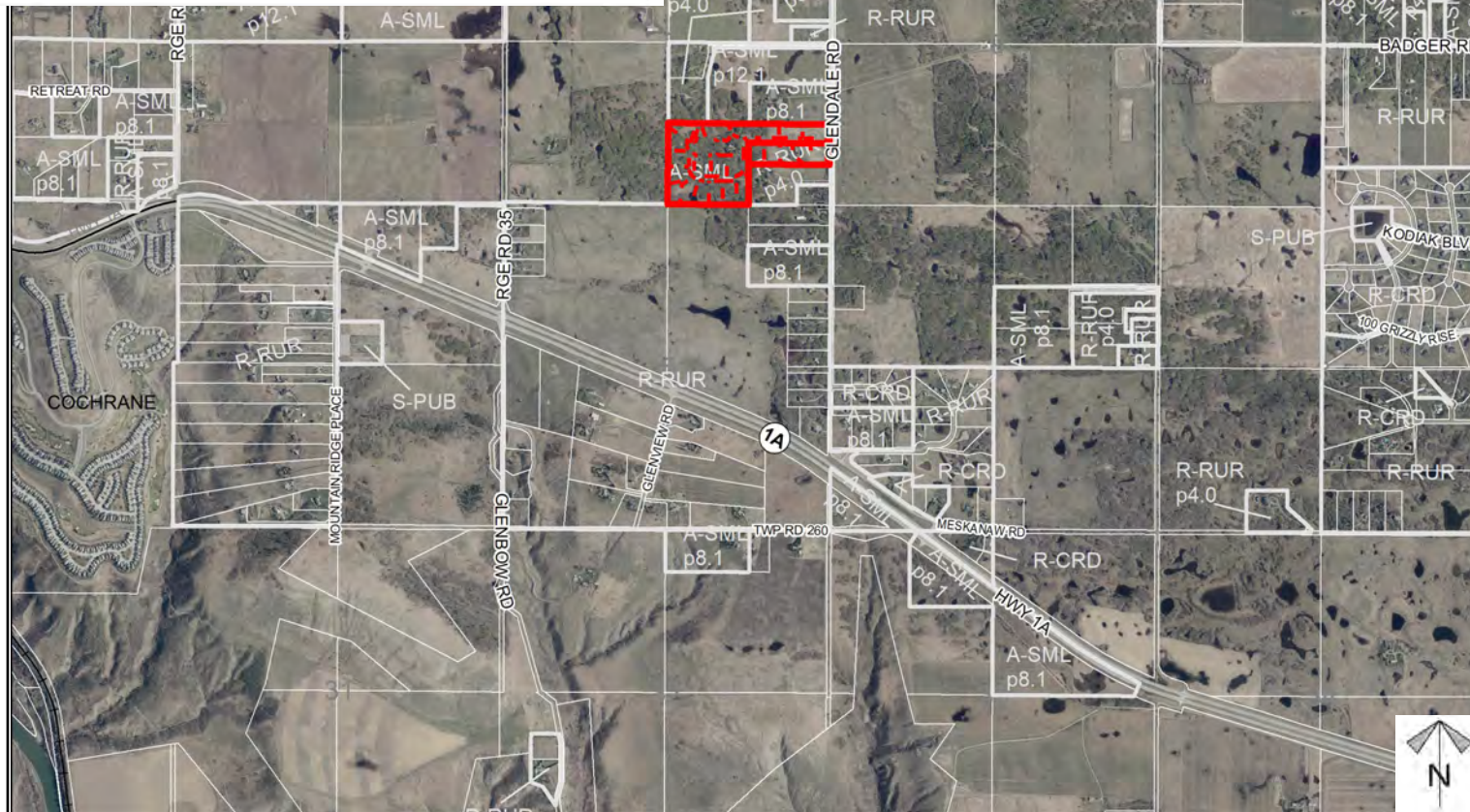
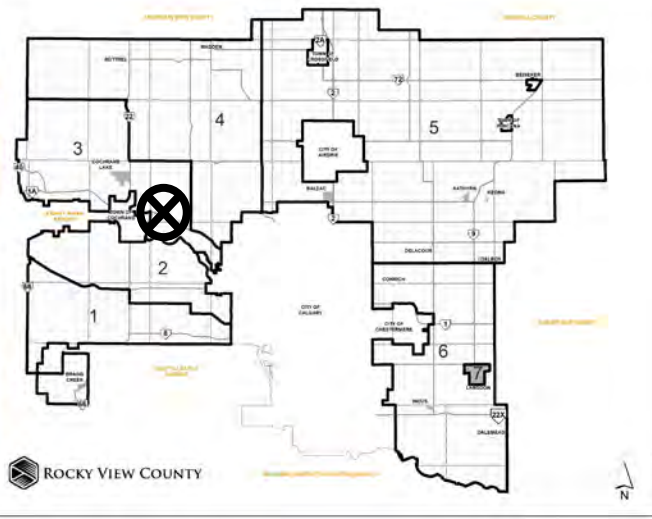
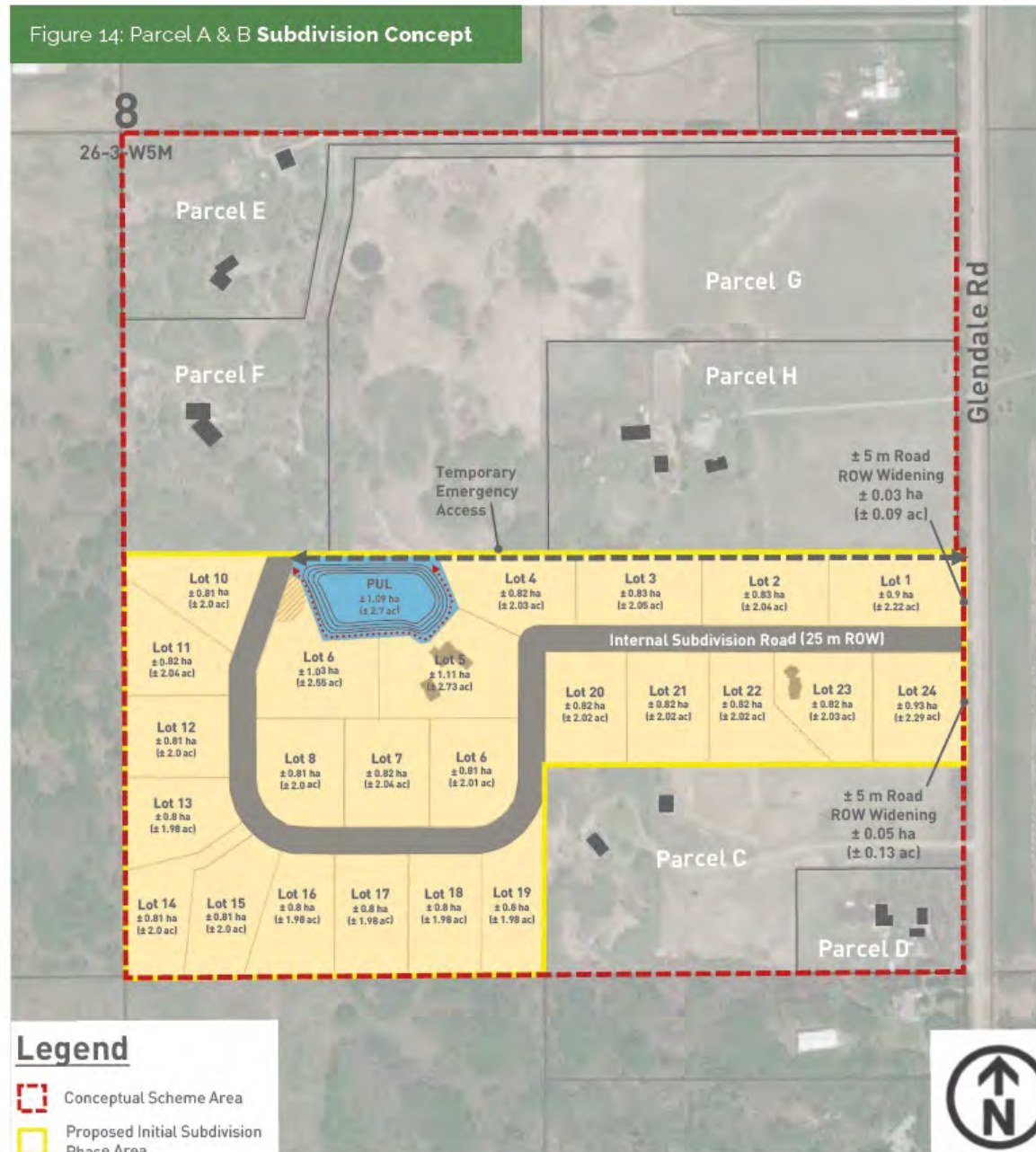


Figure 14: Parcel A & B Subdivision Concept



Development Concept

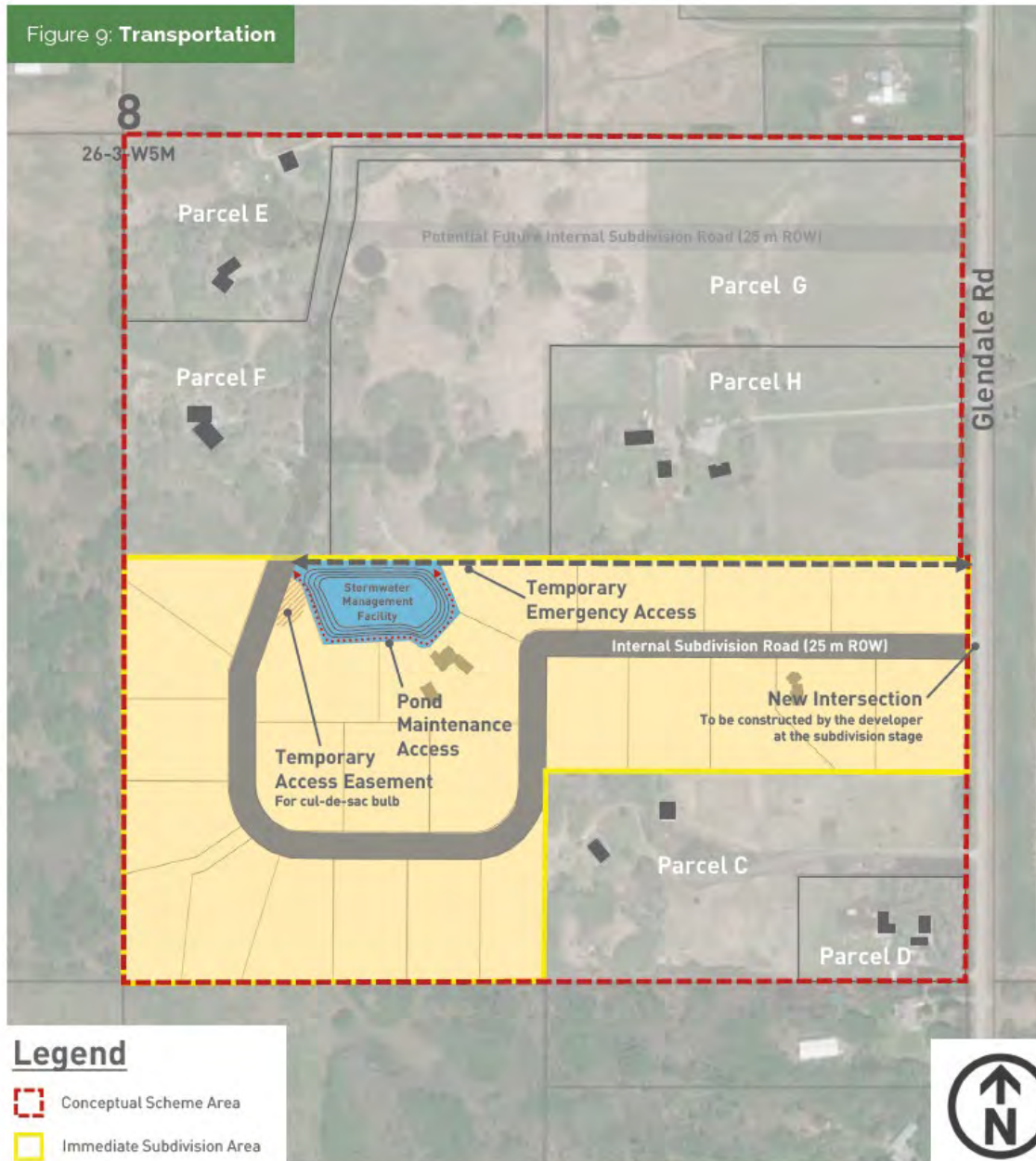
Concept Plan Proposal (PL20220003)

To adopt the Glendale Road Conceptual Scheme that provides a policy framework to guide future redesignation, subdivision for country residential development within the SE-08-26-03-W05M.

Redesignation Proposal (PL20220004)

To redesignate ± 24.40 ha (± 60.30 ac) of land from A-SML and R-RURp4.0 to R-CRD, S-PRK and S-PUB, to facilitate the development of Phase 1 to create 24 residential lots and 1 public utility lot.

Division: 3
Roll:
06708015/08/09/14/13/03/10
/06
File: PL20220003/
PL20220004
Legal: A portion of SE-08-26-03-W05M
Printed: Feb 2, 2022



Transportation

Concept Plan Proposal (PL20220003)

To adopt the Glendale Road Conceptual Scheme that provides a policy framework to guide future redesignation, subdivision for country residential development within the SE-08-26-03-W05M.

Redesignation Proposal (PL20220004)

To redesignate ± 24.40 ha (± 60.30 ac) of land from A-SML and R-RURp4.0 to R-CRD, S-PRK and S-PUB, to facilitate the development of Phase 1 to create 24 residential lots and 1 public utility lot.

Division: 3
 Roll: 06708015/08/09/14/13/03/10/06
 File: PL20220003/
 PL20220004
 Legal: A portion of SE-08-26-03-W05M
 Printed: Feb 2, 2022

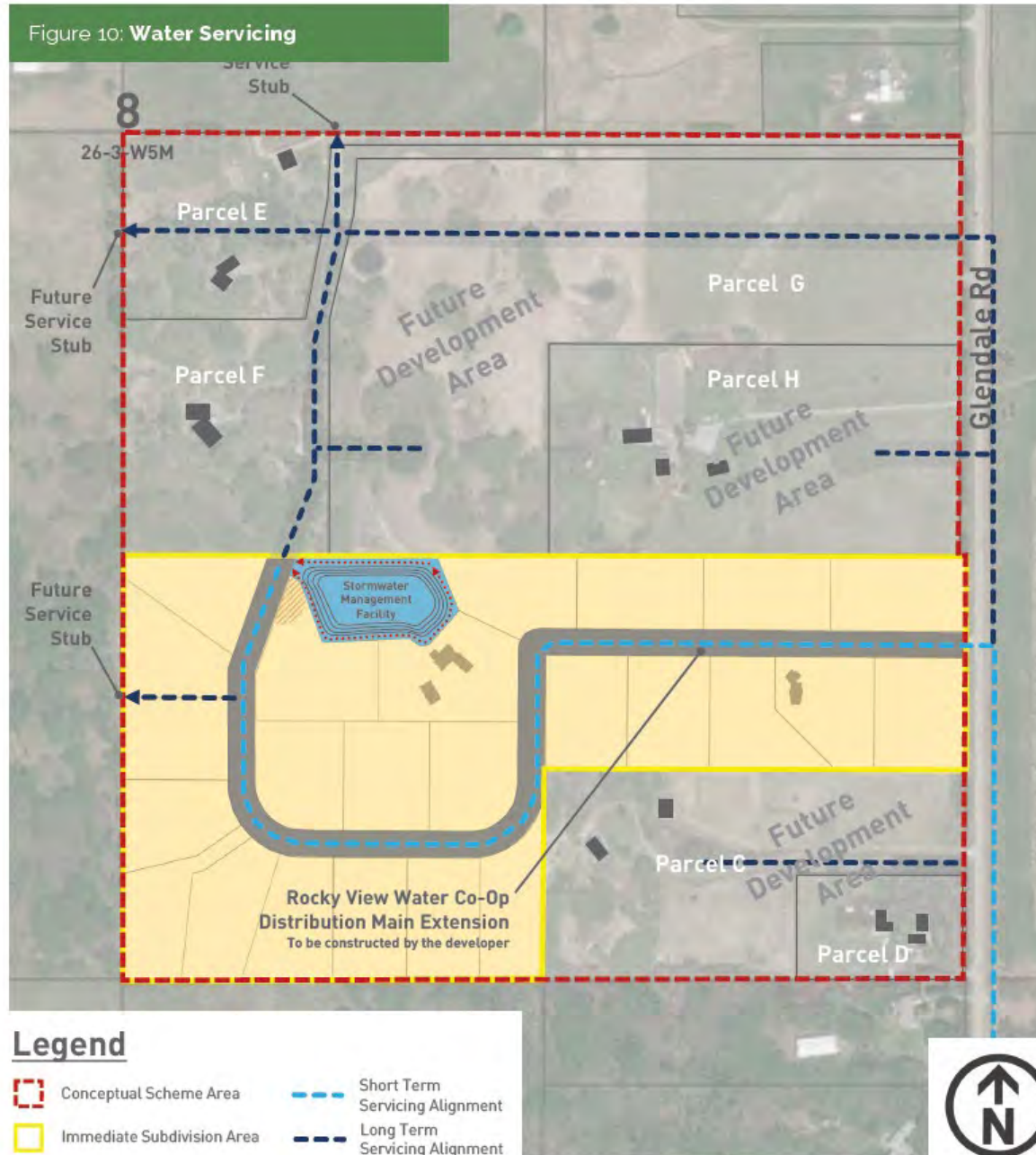
Water Servicing

Concept Plan Proposal (PL20220003)

To adopt the Glendale Road Conceptual Scheme that provides a policy framework to guide future redesignation, subdivision for country residential development within the SE-08-26-03-W05M.

Redesignation Proposal (PL20220004)

To redesignate ± 24.40 ha (± 60.30 ac) of land from A-SML and R-RURp4.0 to R-CRD, S-PRK and S-PUB, to facilitate the development of Phase 1 to create 24 residential lots and 1 public utility lot.



Division: 3
 Roll:
 06708015/08/09/14/13/03/10
 /06
 File: PL20220003/
 PL20220004
 Legal: A portion of SE-08-26-
 03-W05M
 Printed: Feb 2, 2022

Stormwater

Concept Plan Proposal (PL20220003)

To adopt the Glendale Road Conceptual Scheme that provides a policy framework to guide future redesignation, subdivision for country residential development within the SE-08-26-03-W05M.

Redesignation Proposal (PL20220004)

To redesignate ± 24.40 ha (± 60.30 ac) of land from A-SML and R-RURp4.0 to R-CRD, S-PRK and S-PUB, to facilitate the development of Phase 1 to create 24 residential lots and 1 public utility lot.



Division: 3
 Roll:
 06708015/08/09/14/13/03/10
 /06
 File: PL20220003/
 PL20220004
 Legal: A portion of SE-08-26-
 03-W05M
 Printed: Feb 2, 2022



Redesignation for Phase 1

Concept Plan Proposal (PL20220003)

To adopt the Glendale Road Conceptual Scheme that provides a policy framework to guide future redesignation, subdivision for country residential development within the SE-08-26-03-W05M.

Redesignation Proposal (PL20220004)

To redesignate ± 24.40 ha (± 60.30 ac) of land from A-SML and R-RURp4.0 to R-CRD, S-PRK and S-PUB, to facilitate the development of Phase 1 to create 24 residential lots and 1 public utility lot.

Division: 3

Roll:

06708015/08/09/14/13/03/10/06

File: PL20220003/

PL20220004

Legal: A portion of SE-08-26-03-W05M

Printed: Feb 2, 2022



Environmental

Concept Plan Proposal (PL20220003)

To adopt the Glendale Road Conceptual Scheme that provides a policy framework to guide future redesignation, subdivision for country residential development within the SE-08-26-03-W05M.

Redesignation Proposal (PL20220004)

To redesignate ± 24.40 ha (± 60.30 ac) of land from A-SML and R-RURp4.0 to R-CRD,

-  Subject Lands
-  Contour - 2 meters
-  Riparian Setbacks
-  Alberta Wetland Inventory
-  Surface Water

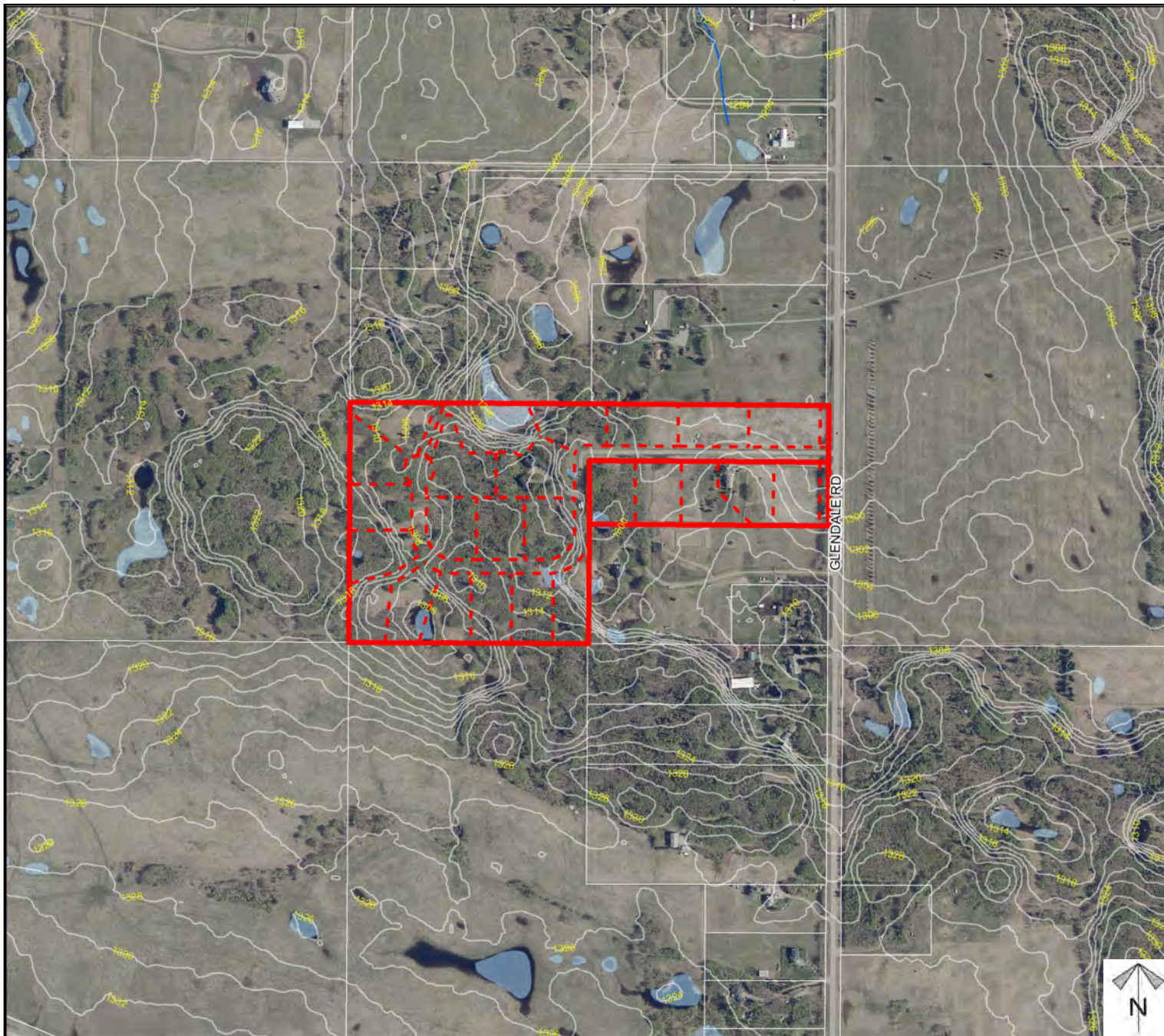
Division: 3

Roll:
06708015/08/09/14/13/03/10
/06

File: PL20220003/
PL20220004

Legal: A portion of SE-08-26-
03-W05M

Printed: Feb 2, 2022



Soil Classifications

Concept Plan Proposal (PL20220003)

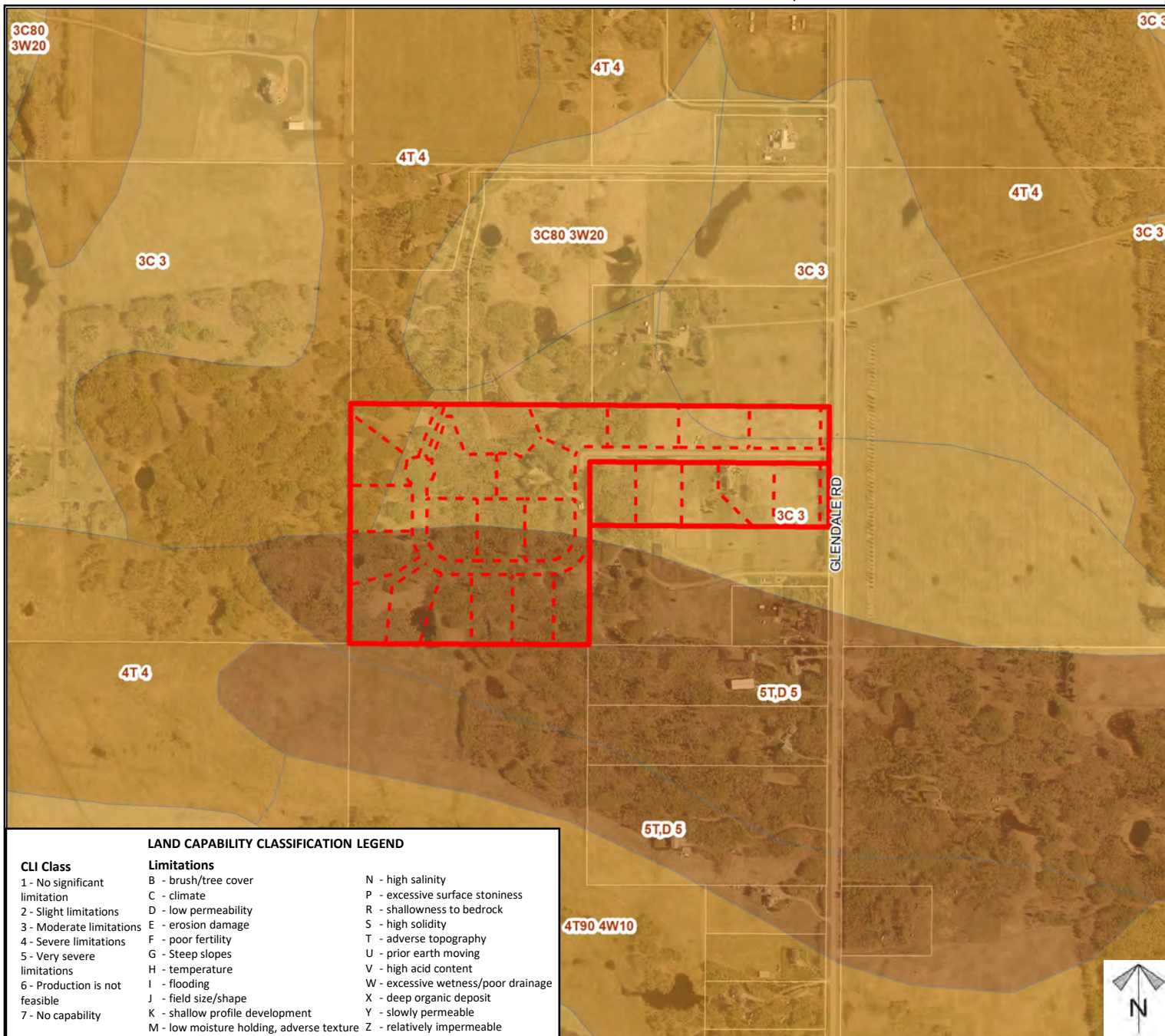
To adopt the Glendale Road Conceptual Scheme that provides a policy framework to guide future redesignation, subdivision for country residential development within the SE-08-26-03-W05M.

Redesignation Proposal (PL20220004)

To redesignate ± 24.40 ha (± 60.30 ac) of land from A-SML and R-RURp4.0 to R-CRD, S-PRK and S-PUB, to facilitate the development of Phase 1 to create 24 residential lots and 1 public utility lot.

LAND CAPABILITY CLASSIFICATION LEGEND

CLI Class	Limitations	
1 - No significant limitation	B - brush/tree cover	N - high salinity
2 - Slight limitations	C - climate	P - excessive surface stoniness
3 - Moderate limitations	D - low permeability	R - shallowness to bedrock
4 - Severe limitations	E - erosion damage	S - high solidity
5 - Very severe limitations	F - poor fertility	T - adverse topography
6 - Production is not feasible	G - Steep slopes	U - prior earth moving
7 - No capability	H - temperature	V - high acid content
	I - flooding	W - excessive wetness/poor drainage
	J - field size/shape	X - deep organic deposit
	K - shallow profile development	Y - slowly permeable
	M - low moisture holding, adverse texture	Z - relatively impermeable



Division: 3

Roll:

06708015/08/09/14/13/03/10/06

File: PL20220003/

PL20220004

Legal: A portion of SE-08-26-03-W05M

Printed: Feb 2, 2022

Landowner Circulation Area

Concept Plan Proposal (PL20220003)

To adopt the Glendale Road Conceptual Scheme that provides a policy framework to guide future redesignation, subdivision for country residential development within the SE-08-26-03-W05M.

Redesignation Proposal (PL20220004)

To redesignate ± 24.40 ha (± 60.30 ac) of land from A-SML and R-RURp4.0 to R-CRD, S-PRK and S-PUB, to facilitate the development of Phase 1 to create 24 residential lots and 1 public utility lot.

Legend

Support

Not Support



Division: 3

Roll:

06708015/08/09/14/13/03/10/06

File: PL20220003/

PL20220004

Legal: A portion of SE-08-26-03-W05M

Printed: Feb 2, 2022

