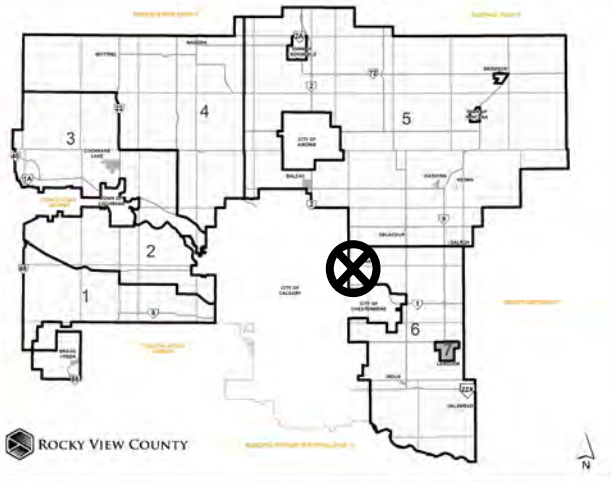


## Location & Context

### Conceptual Scheme & Redesignation Proposal

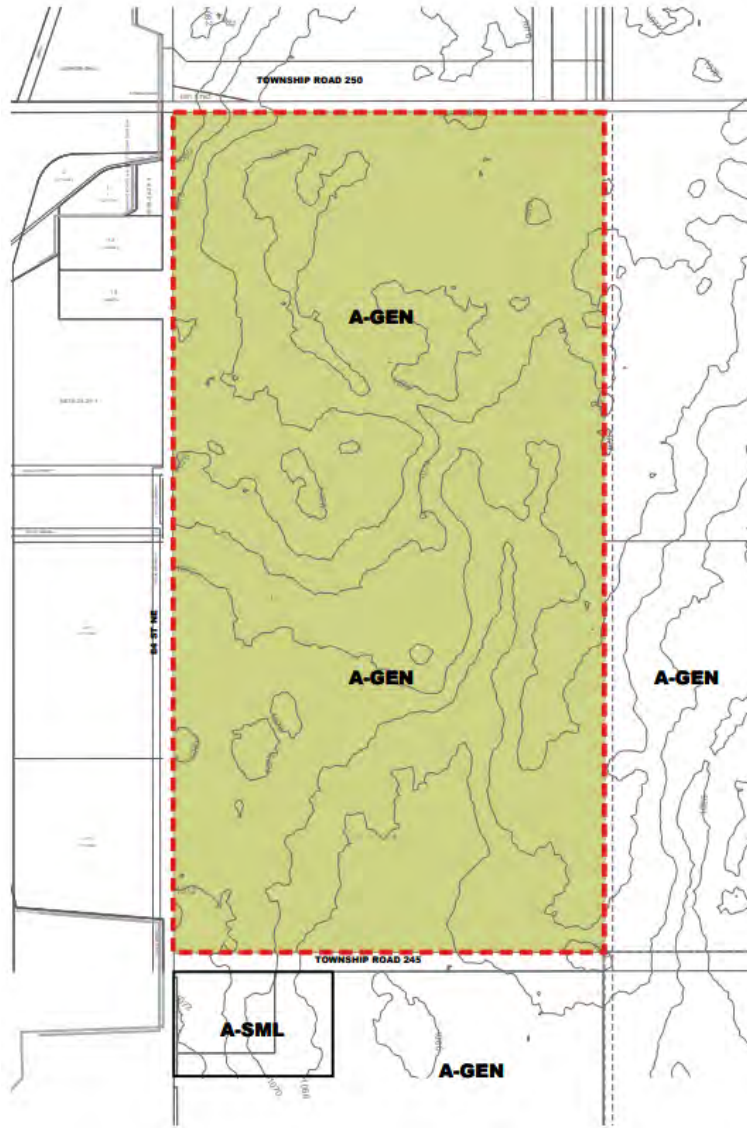
Proposed Westcon Business Park Conceptual Scheme and To redesignate  $\pm 51.13$  hectares ( $\pm 126.34$  acres) from Agricultural, General District (A-GEN) to  $\pm 14.75$  hectares ( $\pm 36.45$  acres) of Business, Regional Campus District (B-REG),  $\pm 40.00$  hectares ( $\pm 98.83$  acres) of Industrial, Light District (I-LHT),  $\pm 0.98$  hectares ( $\pm 2.43$  acres) of Special, Natural Open Space District (S-NOS),  $\pm 3.81$  hectares ( $\pm 9.42$  acres) of Special, Parks and Recreation District (S-PRK), and  $\pm 5.21$  hectares ( $\pm 12.87$  acres) of Special, Public Service District (S-PUB).

Division: 6  
 Roll: 04331003/006/008  
 File: PL20200056  
 Printed: July 13, 2021  
 Legal: NW-31-24-28-W04M

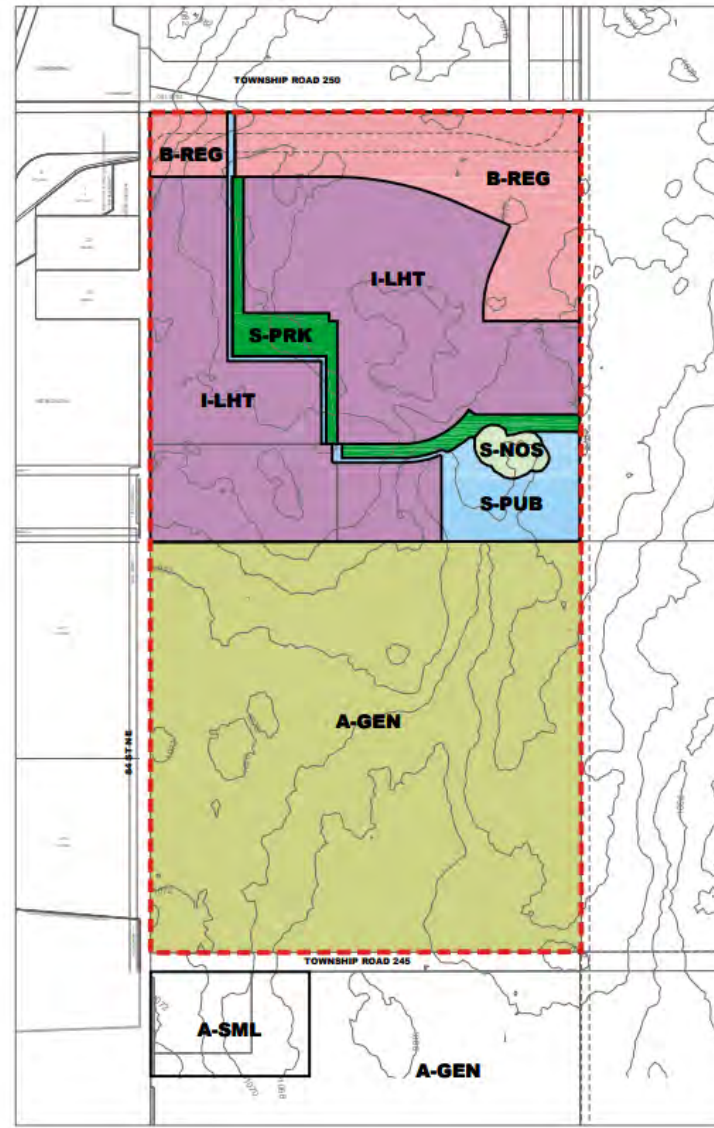


CALGARY



**EXISTING LAND USE****PROPOSED LAND USE**

Land Use Bylaw C-8000-2020

**Development  
Proposal****Conceptual Scheme &  
Redesignation Proposal**

Proposed Westcon Business Park Conceptual Scheme and To redesignate  $\pm 51.13$  hectares ( $\pm 126.34$  acres) from Agricultural, General District (A-GEN) to  $\pm 14.75$  hectares ( $\pm 36.45$  acres) of Business, Regional Campus District (B-REG),  $\pm 40.00$  hectares ( $\pm 98.83$  acres) of Industrial, Light District (I-LHT),  $\pm 0.98$  hectares ( $\pm 2.43$  acres) of Special, Natural Open Space District (S-NOS),  $\pm 3.81$  hectares ( $\pm 9.42$  acres) of Special, Parks and Recreation District (S-PRK), and  $\pm 5.21$  hectares ( $\pm 12.87$  acres) of Special, Public Service District (S-PUB).

Division: 6  
Roll: 04331003/006/008  
File: PL20200056  
Printed: July 13, 2021  
Legal: NW-31-24-28-W04M

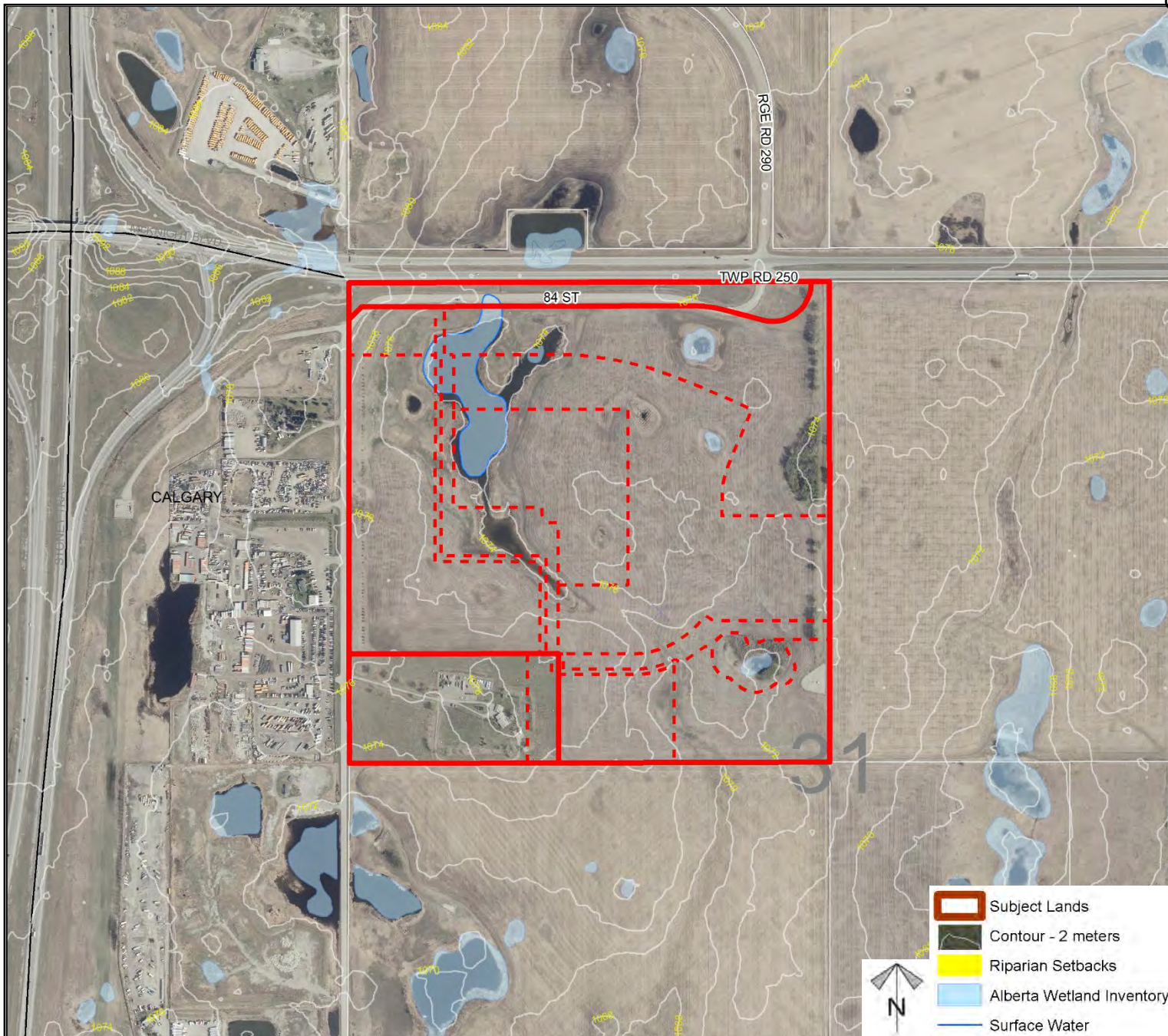




## Environmental

### Conceptual Scheme & Redesignation Proposal

Proposed Westcon Business Park Conceptual Scheme and To redesignate  $\pm 51.13$  hectares ( $\pm 126.34$  acres) from Agricultural, General District (A-GEN) to  $\pm 14.75$  hectares ( $\pm 36.45$  acres) of Business, Regional Campus District (B-REG),  $\pm 40.00$  hectares ( $\pm 98.83$  acres) of Industrial, Light District (I-LHT),  $\pm 0.98$  hectares ( $\pm 2.43$  acres) of Special, Natural Open Space District (S-NOS),  $\pm 3.81$  hectares ( $\pm 9.42$  acres) of Special, Parks and Recreation District (S-PRK), and  $\pm 5.21$  hectares ( $\pm 12.87$  acres) of Special, Public Service District (S-PUB).



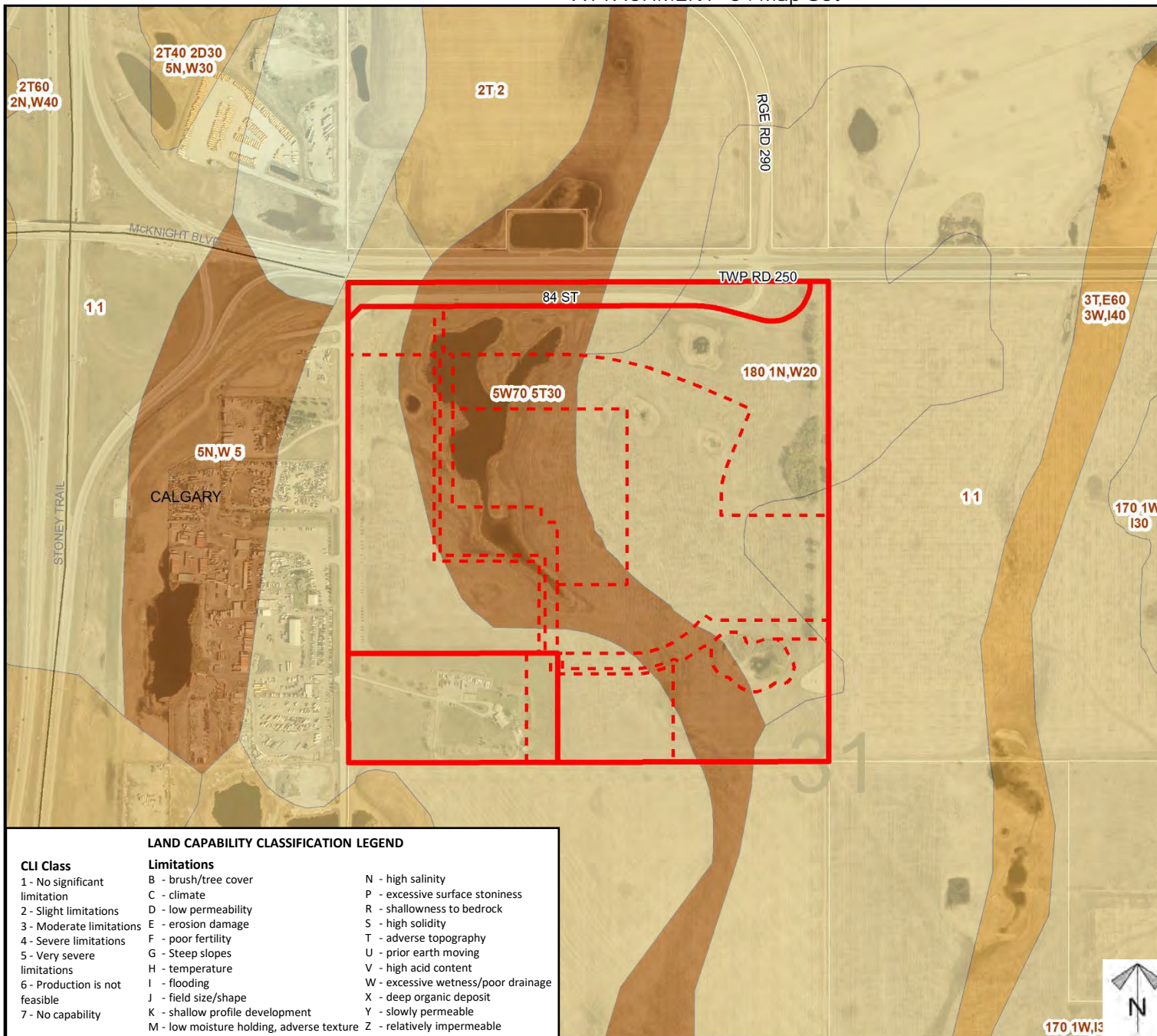
Division: 6  
Roll: 04331003/006/008  
File: PL20200056  
Printed: July 13, 2021  
Legal: NW-31-24-28-W04M



## Soil Classifications

### Conceptual Scheme & Redesignation Proposal

Proposed Westcon Business Park Conceptual Scheme and To redesignate  $\pm 51.13$  hectares ( $\pm 126.34$  acres) from Agricultural, General District (A-GEN) to  $\pm 14.75$  hectares ( $\pm 36.45$  acres) of Business, Regional Campus District (B-REG),  $\pm 40.00$  hectares ( $\pm 98.83$  acres) of Industrial, Light District (I-LHT),  $\pm 0.98$  hectares ( $\pm 2.43$  acres) of Special, Natural Open Space District (S-NOS),  $\pm 3.81$  hectares ( $\pm 9.42$  acres) of Special, Parks and Recreation District (S-PRK), and  $\pm 5.21$  hectares ( $\pm 12.87$  acres) of Special, Public Service District (S-PUB).



Division: 6  
Roll: 04331003/006/008  
File: PL20200056  
Printed: July 13, 2021  
Legal: NW-31-24-28-W04M

## Landowner Circulation Area

### Conceptual Scheme & Redesignation Proposal

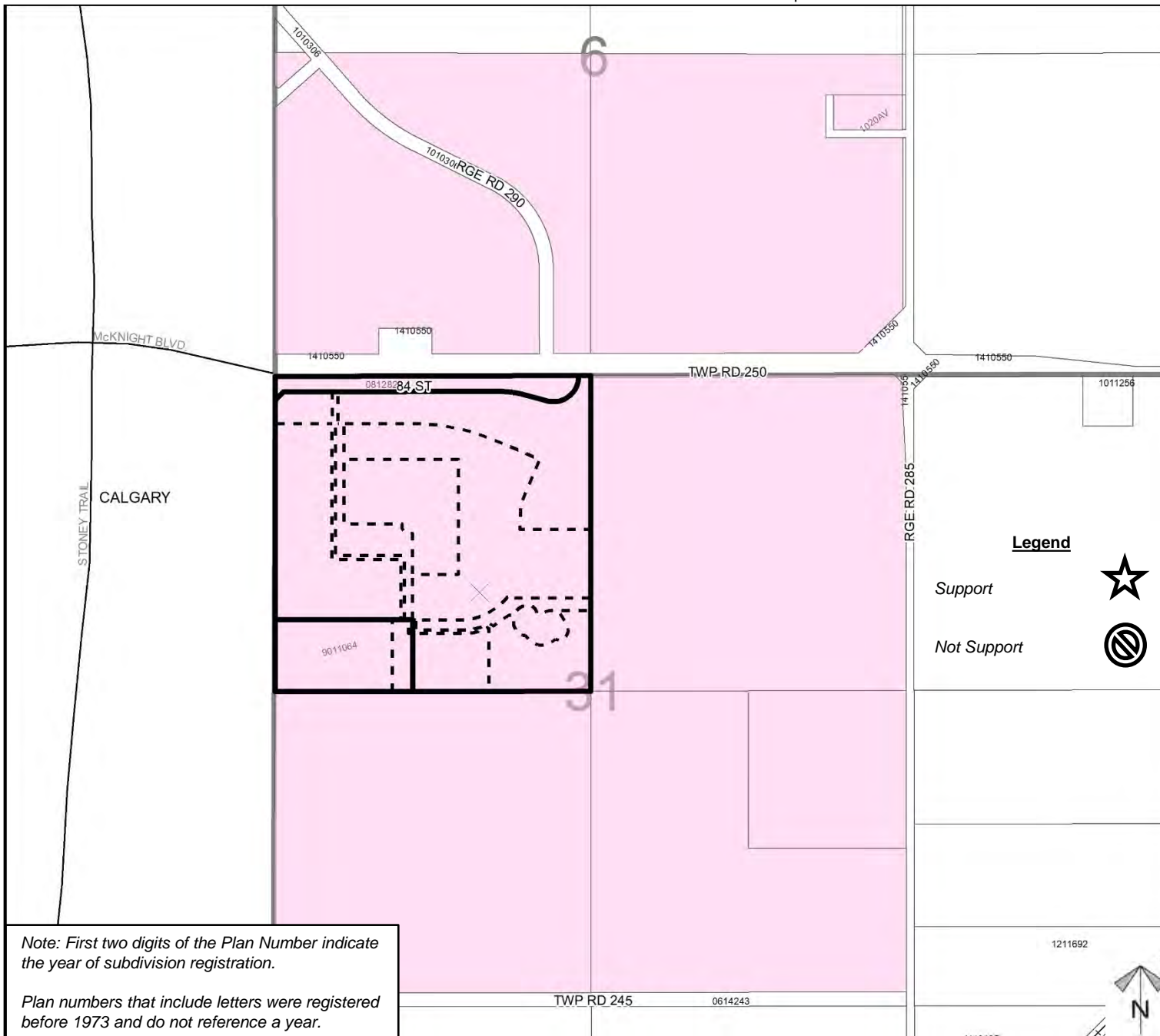
Proposed Westcon Business Park Conceptual Scheme and To redesignate  $\pm 51.13$  hectares ( $\pm 126.34$  acres) from Agricultural, General District (A-GEN) to  $\pm 14.75$  hectares ( $\pm 36.45$  acres) of Business, Regional Campus District (B-REG),  $\pm 40.00$  hectares ( $\pm 98.83$  acres) of Industrial, Light District (I-LHT),  $\pm 0.98$  hectares ( $\pm 2.43$  acres) of Special, Natural Open Space District (S-NOS),  $\pm 3.81$  hectares ( $\pm 9.42$  acres) of Special, Parks and Recreation District (S-PRK), and  $\pm 5.21$  hectares ( $\pm 12.87$  acres) of Special, Public Service District (S-PUB).

#### Legend

Support



Not Support



Note: First two digits of the Plan Number indicate the year of subdivision registration.

Plan numbers that include letters were registered before 1973 and do not reference a year.

Division: 6

Roll: 04331003/006/008

File: PL20200056

Printed: July 13, 2021

Legal: NW-31-24-28-W04M