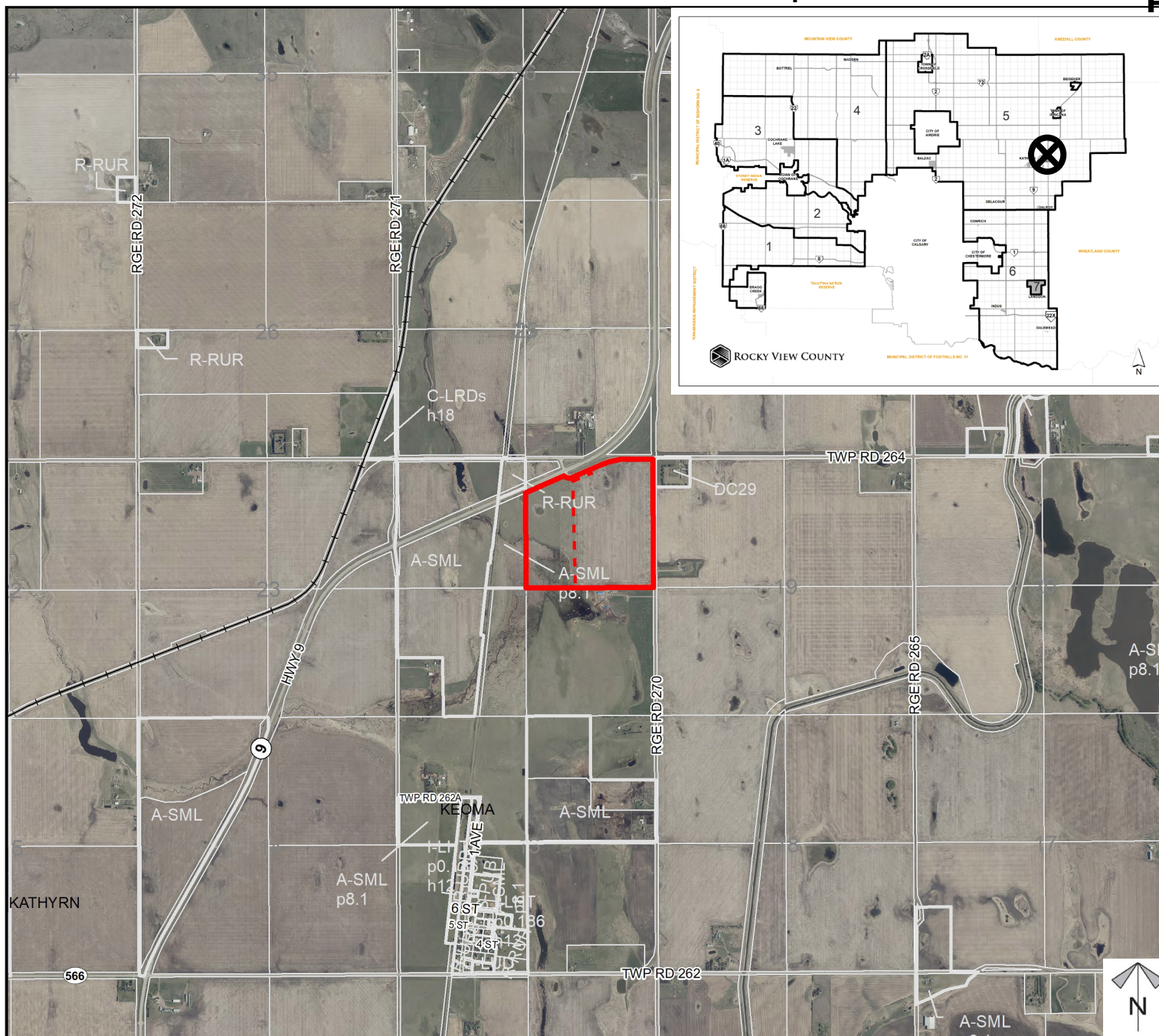


## Subdivision Proposal

To create a  $\pm 20.23$  hectares ( $\pm 50.00$  acres) parcel with a  $\pm 38.62$  hectares ( $\pm 95.42$  acres) remainder.

Division: 5  
Roll: 06224004  
File: PL20220066  
Printed: May 2, 2022  
Legal: A portion of  
NE-24-26-27-W04M



## Development Proposal

### Subdivision Proposal

To create a  $\pm 20.23$  hectares ( $\pm 50.00$  acres) parcel with a  $\pm 38.62$  hectares ( $\pm 95.42$  acres) remainder.

Lot 1  
 $\pm 20.23$  ha  
( $\pm 50.00$  ac)

Lot 2  
 $\pm 38.62$  ha  
( $\pm 95.42$  ac)

TWP RD 264

9 HWY 9

RGE RD 270

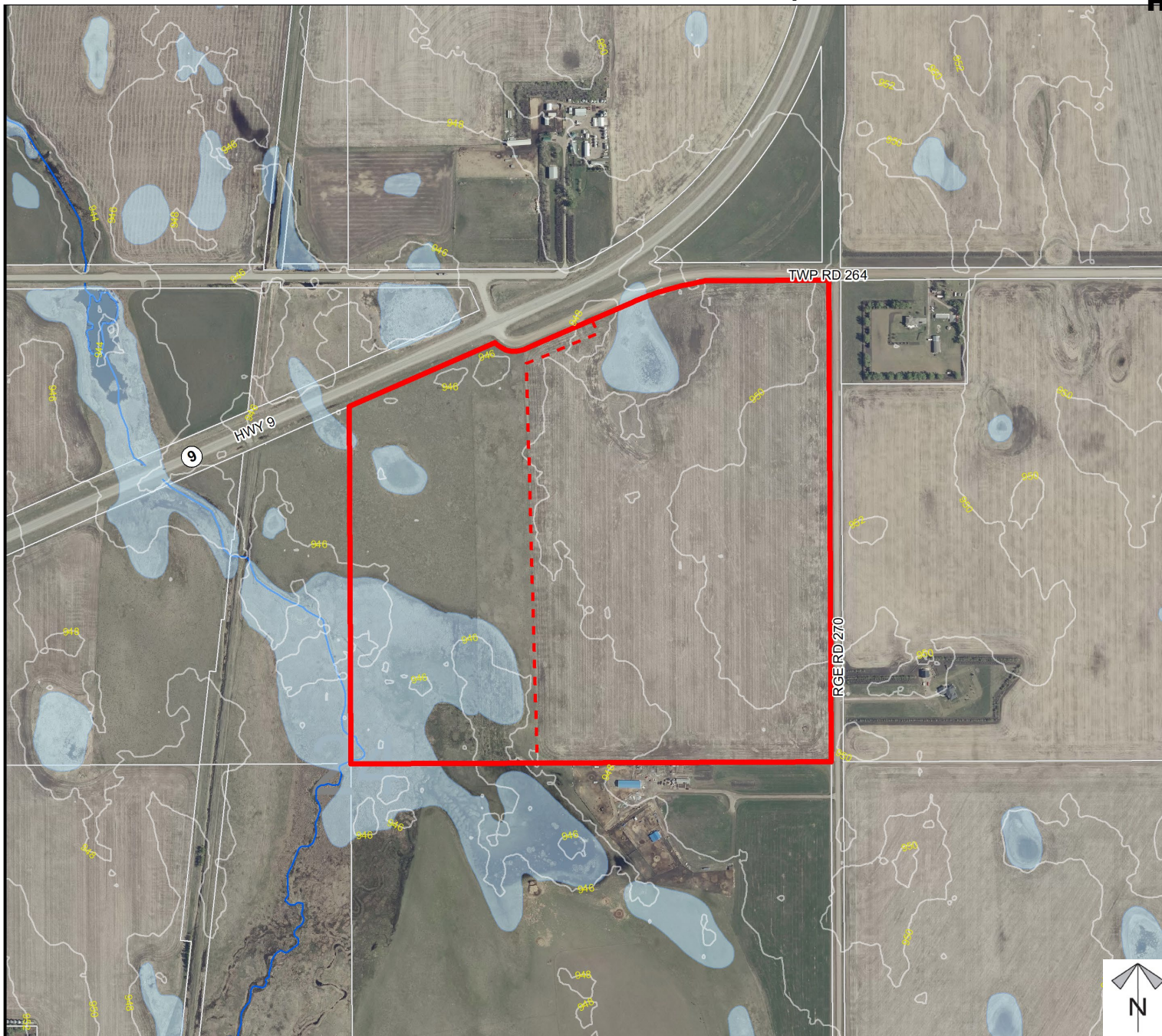


Division: 5  
Roll: 06224004  
File: PL20220066  
Printed: May 2, 2022  
Legal: A portion of  
NE-24-26-27-W04M

## Environmental

### Subdivision Proposal

To create a  $\pm 20.23$  hectares ( $\pm 50.00$  acres) parcel with a  $\pm 38.62$  hectares ( $\pm 95.42$  acres) remainder.



-  Subject Lands
-  Contour - 2 meters
-  Riparian Setbacks
-  Alberta Wetland Inventory
-  Surface Water

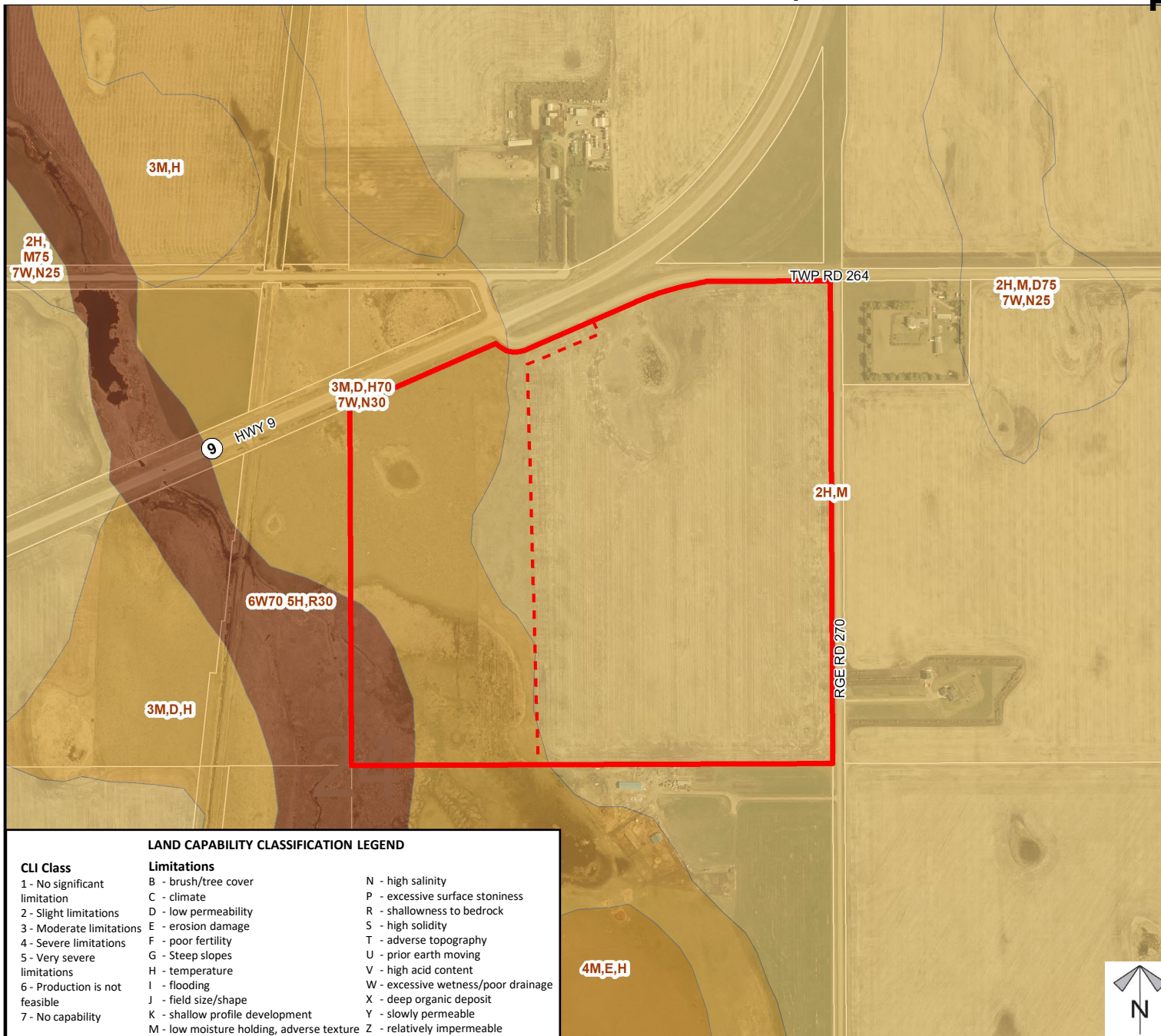
Division: 5  
 Roll: 06224004  
 File: PL20220066  
 Printed: May 2, 2022  
 Legal: A portion of  
 NE-24-26-27-W04M



## Soil Classifications

### Subdivision Proposal

To create a  $\pm 20.23$  hectares ( $\pm 50.00$  acres) parcel with a  $\pm 38.62$  hectares ( $\pm 95.42$  acres) remainder.



#### LAND CAPABILITY CLASSIFICATION LEGEND

##### CLI Class

- 1 - No significant limitation
- 2 - Slight limitations
- 3 - Moderate limitations
- 4 - Severe limitations
- 5 - Very severe limitations
- 6 - Production is not feasible
- 7 - No capability

##### Limitations

- B - brush/tree cover
- C - climate
- D - low permeability
- E - erosion damage
- F - poor fertility
- G - Steep slopes
- H - temperature
- I - flooding
- J - field size/shape
- K - shallow profile development
- M - low moisture holding, adverse texture
- N - high salinity
- P - excessive surface stoniness
- R - shallowness to bedrock
- S - high solidity
- T - adverse topography
- U - prior earth moving
- V - high acid content
- W - excessive wetness/poor drainage
- X - deep organic deposit
- Y - slowly permeable
- Z - relatively impermeable

Division: 5  
Roll: 06224004  
File: PL20220066  
Printed: May 2, 2022  
Legal: A portion of  
NE-24-26-27-W04M

**Landowner  
Circulation  
Area**

## Subdivision Proposal

To create a  $\pm 20.23$  hectares ( $\pm 50.00$  acres) parcel with a  $\pm 38.62$  hectares ( $\pm 95.42$  acres) remainder.

**Legend**

## Support



*Not Support*



Division: 5  
Roll: 06224004  
File: PL20220066  
Printed: May 2, 2022  
Legal: A portion of  
NE-24-26-27-W04M

