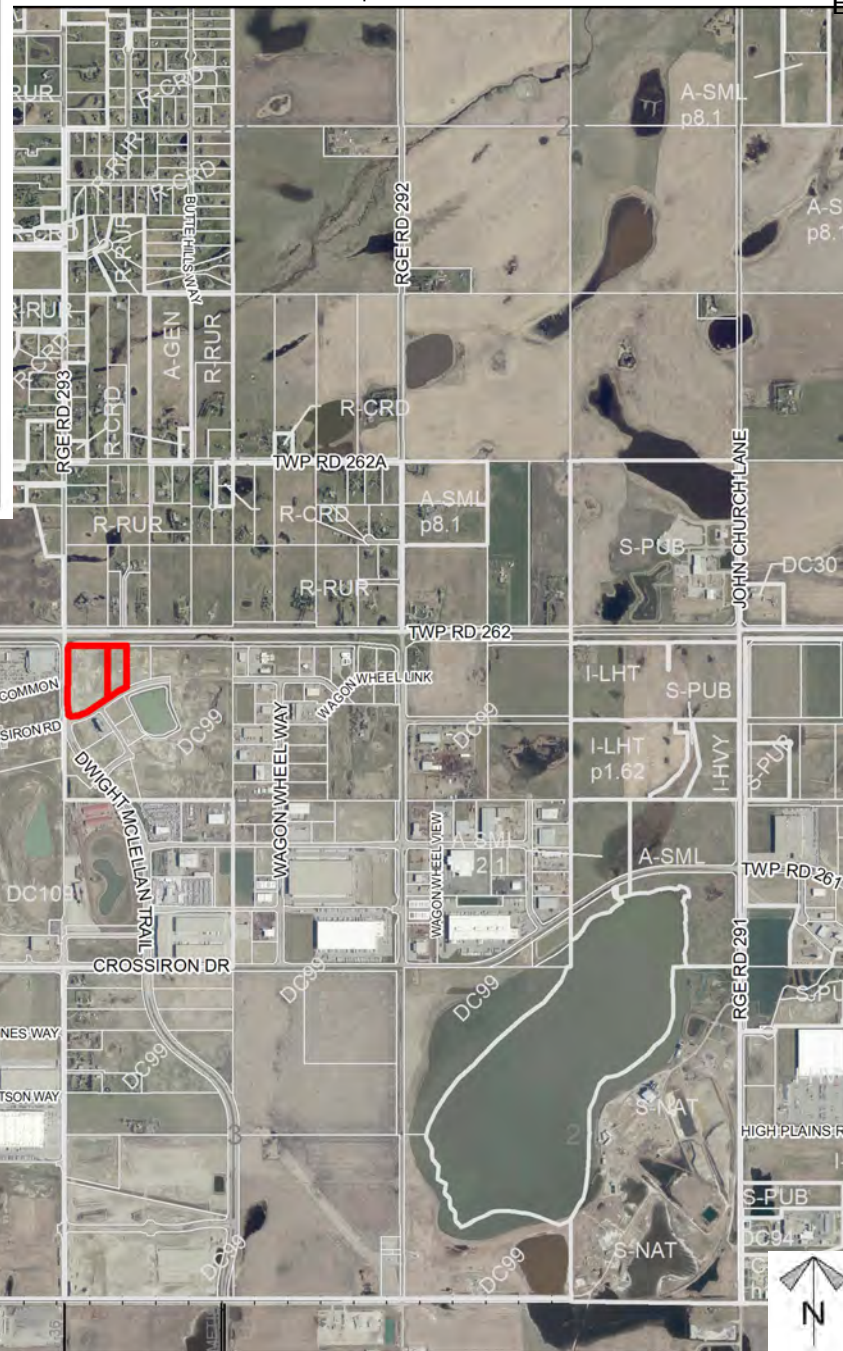


A site-specific amendment to Direct Control District (DC-99) to increase the maximum site coverage from 25% to 40% and to amend specific allowable uses over Lot 1 & 2, Block 1, Plan 1611467 within NW-10-26-29-W04M.

Division: 5  
Roll: 06410060 & 06410061  
File: PL20220011  
Printed: June 7, 2022  
Legal: Lot: 1 & 2 Block: 1  
Plan: 1611467 within NW-10-  
26-29-W04M

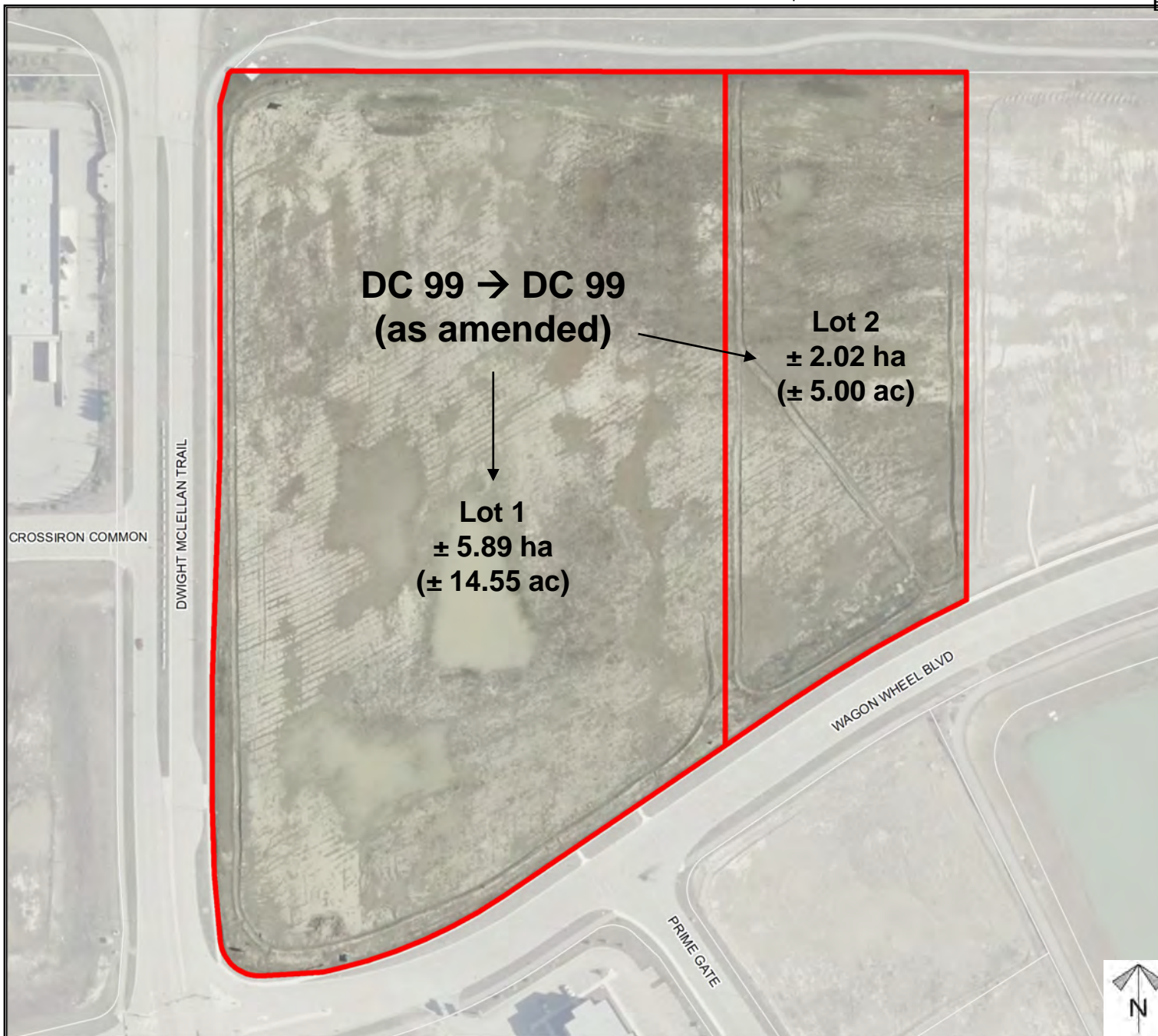




## Development Proposal

### Direct Control Amendment Proposal

A site-specific amendment to Direct Control District (DC-99) to increase the maximum site coverage from 25% to 40% and to amend specific allowable uses over Lot 1 & 2, Block 1, Plan 1611467 within NW-10-26-29-W04M.



Division: 5  
Roll: 06410060 & 06410061  
File: PL20220011  
Printed: June 7, 2022  
Legal: Lot: 1 & 2 Block: 1  
Plan: 1611467 within NW-10-  
26-29-W04M



## Environmental

### Direct Control Amendment Proposal

A site-specific amendment to Direct Control District (DC-99) to increase the maximum site coverage from 25% to 40% and to amend specific allowable uses over Lot 1 & 2, Block 1, Plan 1611467 within NW-10-26-29-W04M.



-  Subject Lands
-  Contour - 2 meters
-  Riparian Setbacks
-  Alberta Wetland Inventory
-  Surface Water

Division: 5  
 Roll: 06410060 & 06410061  
 File: PL20220011  
 Printed: June 7, 2022  
 Legal: Lot: 1 & 2 Block: 1  
 Plan: 1611467 within NW-10-26-29-W04M

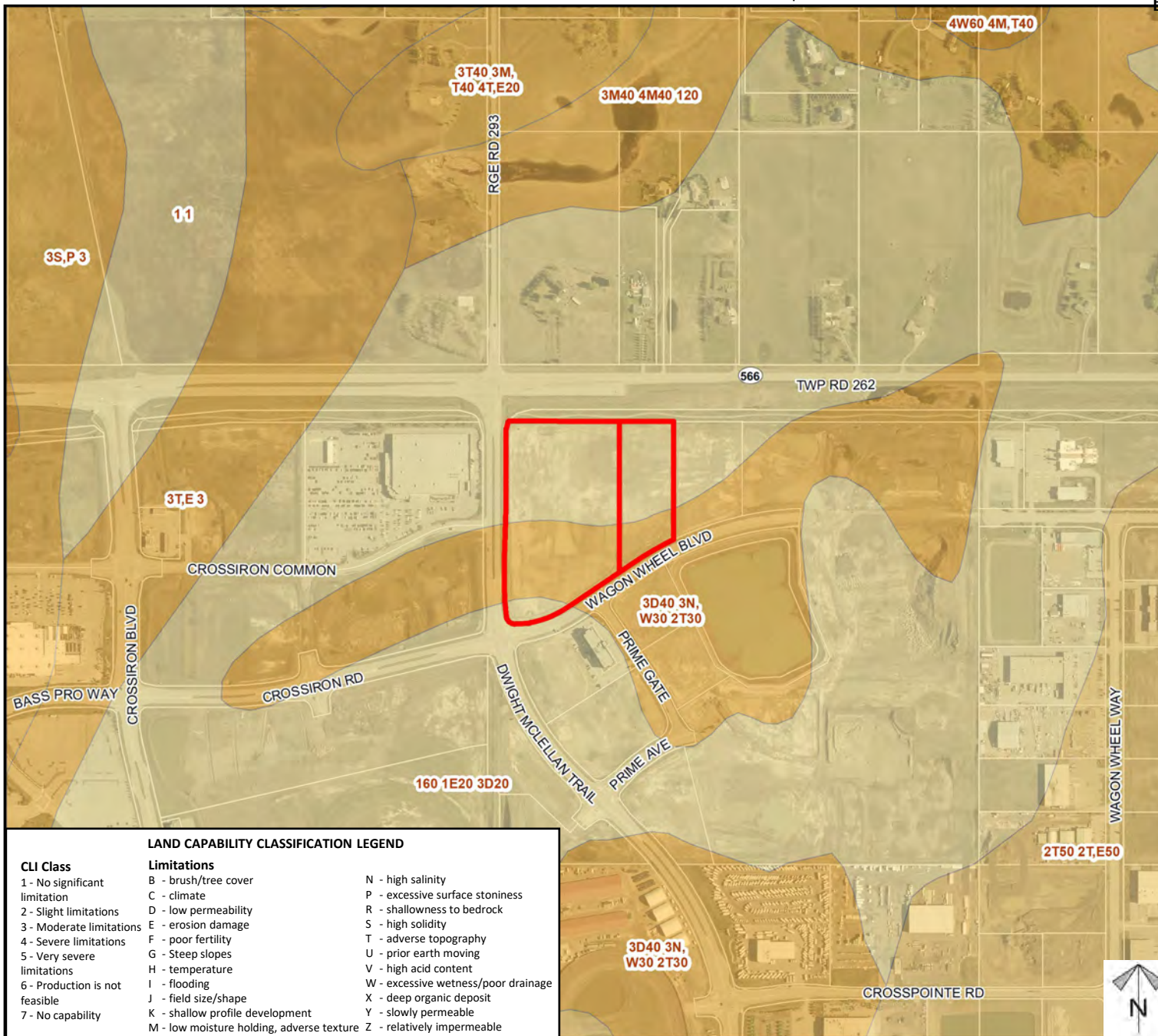




## Soil Classifications

### Direct Control Amendment Proposal

A site-specific amendment to Direct Control District (DC-99) to increase the maximum site coverage from 25% to 40% and to amend specific allowable uses over Lot 1 & 2, Block 1, Plan 1611467 within NW-10-26-29-W04M.



Division: 5  
Roll: 06410060 & 06410061  
File: PL20220011  
Printed: June 7, 2022  
Legal: Lot: 1 & 2 Block: 1  
Plan: 1611467 within NW-10-26-29-W04M



## Landowner Circulation Area

### Direct Control Amendment Proposal

A site-specific amendment to Direct Control District (DC-99) to increase the maximum site coverage from 25% to 40% and to amend specific allowable uses over Lot 1 & 2, Block 1, Plan 1611467 within NW-10-26-29-W04M.

### Legend

Support

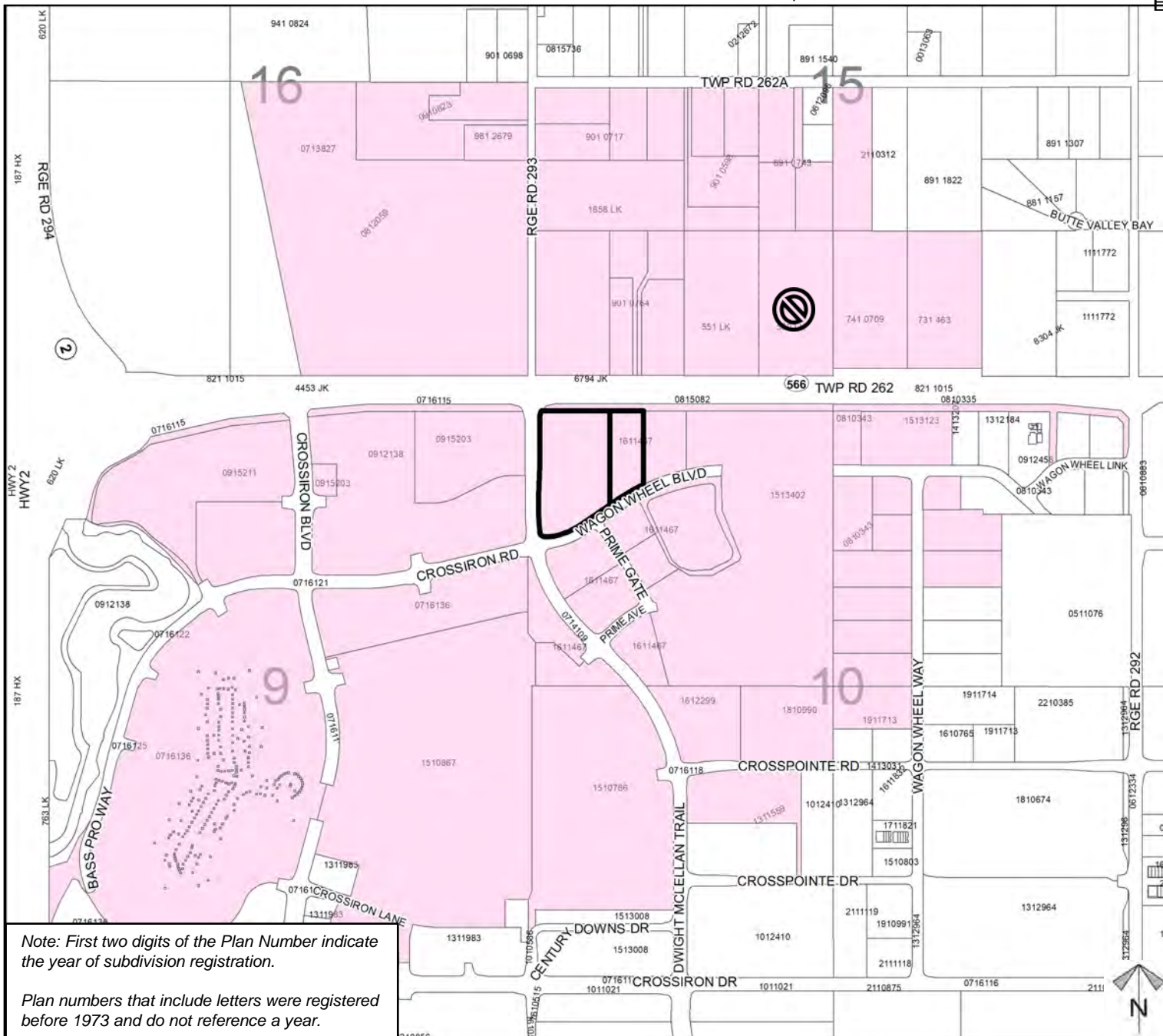


Not Support



Note: First two digits of the Plan Number indicate the year of subdivision registration.

Plan numbers that include letters were registered before 1973 and do not reference a year.



Division: 5  
Roll: 06410060 & 06410061  
File: PL20220011  
Printed: June 7, 2022  
Legal: Lot: 1 & 2 Block: 1  
Plan: 1611467 within NW-10-26-29-W04M