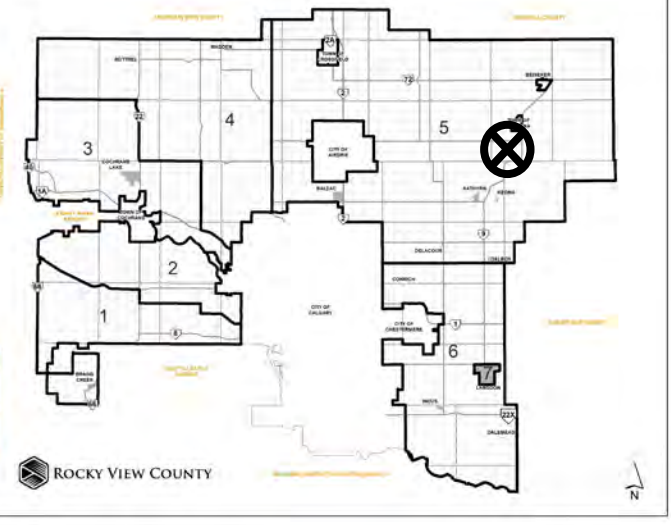




## Location & Context

### Redesignation Proposal

To redesignate the subject lands from Agricultural, General District (A-GEN) to Residential, Rural District (R-RUR) in order to facilitate the creation of a  $\pm 4.35$  hectare ( $\pm 10.75$  acre) parcel with  $\pm 56.42$  hectare ( $\pm 139.41$  acre) remainder.



Division: 5  
Roll: 07108011  
File: PL20220107  
Printed: June 24, 2022  
Legal: A portion of S-08-27-26-W04M





## Development Proposal

### Redesignation Proposal

To redesignate the subject lands from Agricultural, General District (A-GEN) to Residential, Rural District (R-RUR) in order to facilitate the creation of a  $\pm 4.35$  hectare ( $\pm 10.75$  acre) parcel with  $\pm 56.42$  hectare ( $\pm 139.41$  acre) remainder.



Division: 5  
Roll: 07108011  
File: PL20220107  
Printed: June 24, 2022  
Legal: A portion of S-08-27-26-W04M





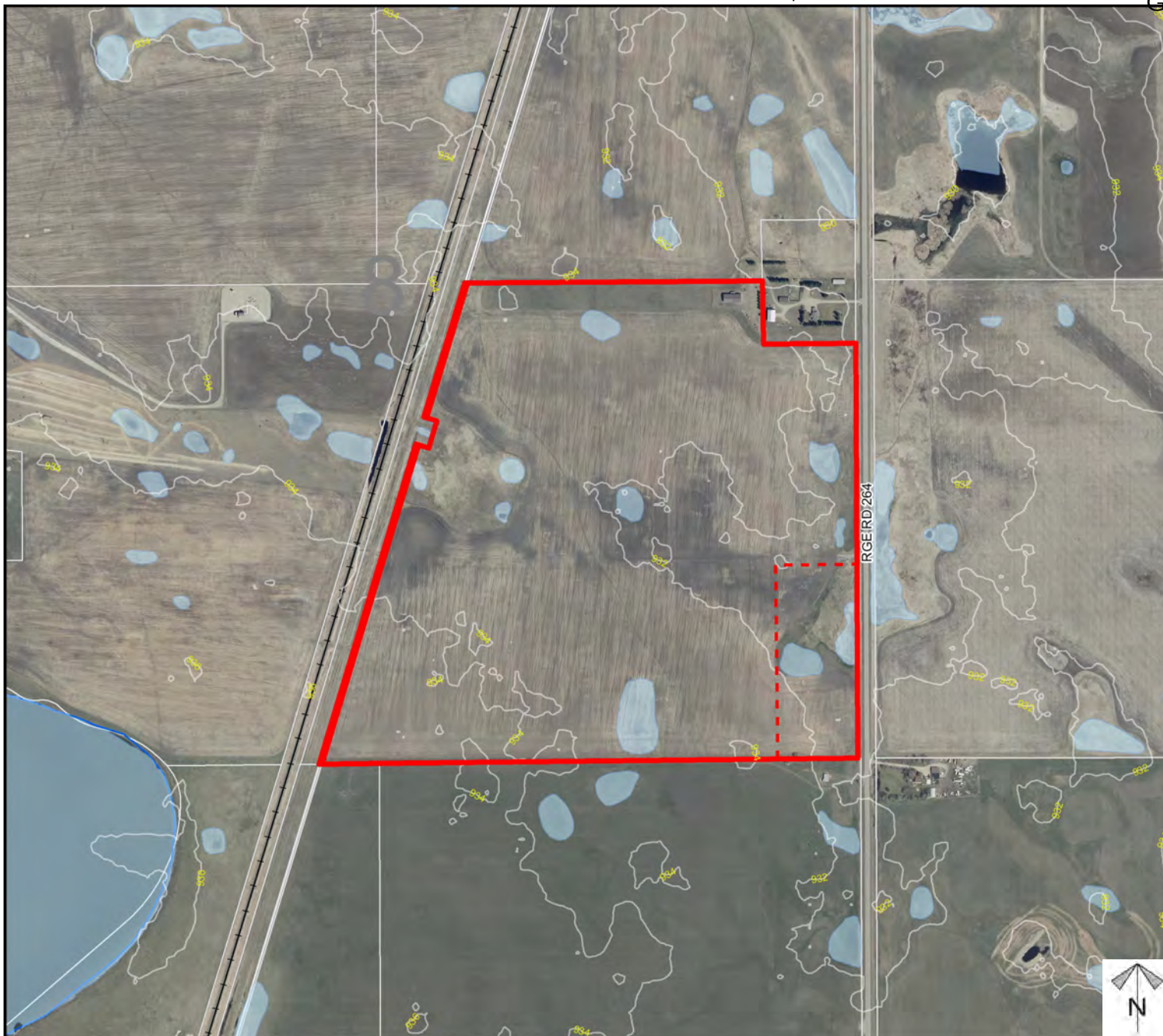
## Environmental

### Redesignation Proposal

To redesignate the subject lands from Agricultural, General District (A-GEN) to Residential, Rural District (R-RUR) in order to facilitate the creation of a  $\pm 4.35$  hectare ( $\pm 10.75$  acre) parcel with  $\pm 56.42$  hectare ( $\pm 139.41$  acre) remainder.

-  Subject Lands
-  Contour - 2 meters
-  Riparian Setbacks
-  Alberta Wetland Inventory
-  Surface Water

Division: 5  
Roll: 07108011  
File: PL20220107  
Printed: June 24, 2022  
Legal: A portion of S-08-27-26-W04M



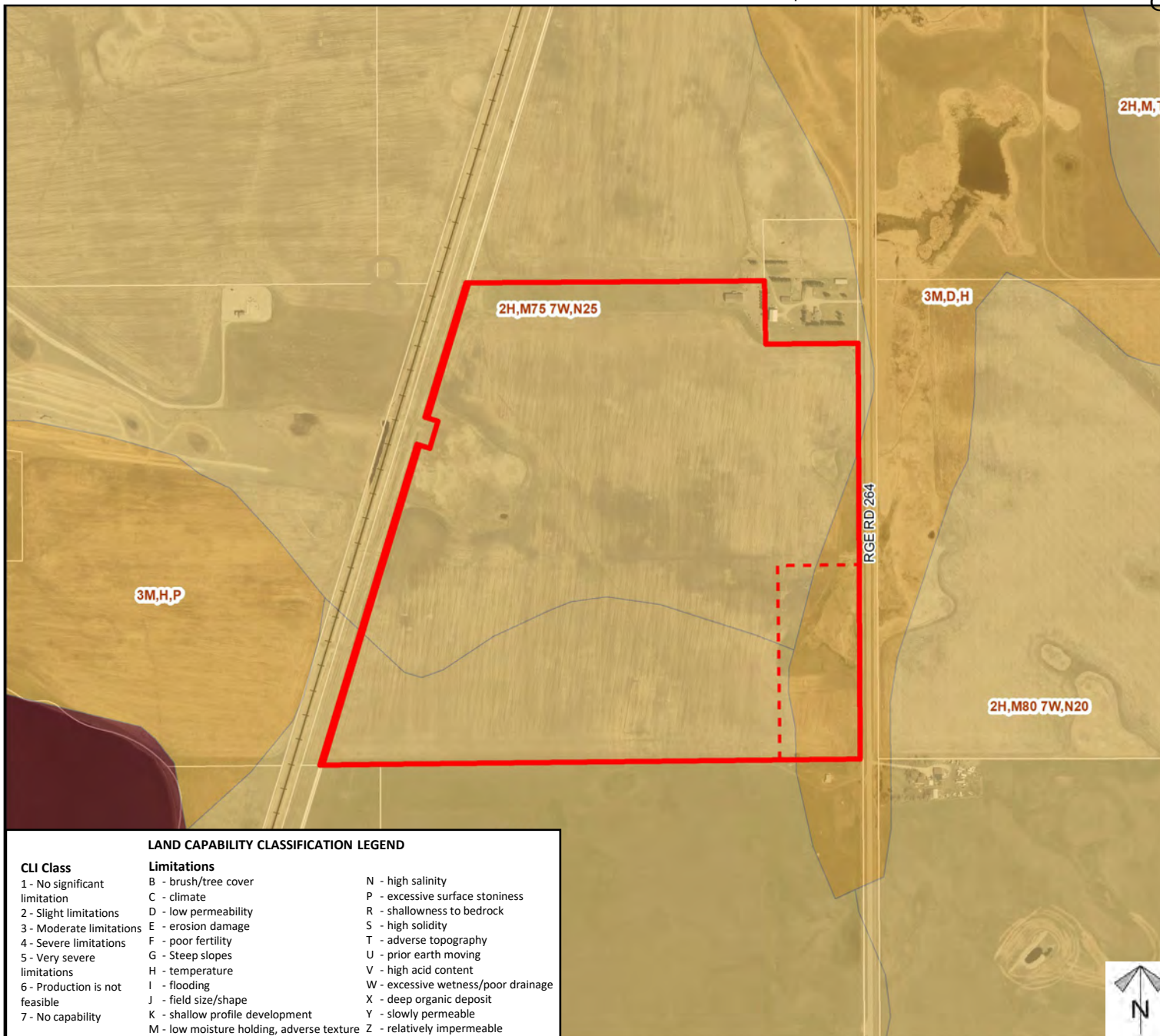




## Soil Classifications

### Redesignation Proposal

To redesignate the subject lands from Agricultural, General District (A-GEN) to Residential, Rural District (R-RUR) in order to facilitate the creation of a  $\pm 4.35$  hectare ( $\pm 10.75$  acre) parcel with  $\pm 56.42$  hectare ( $\pm 139.41$  acre) remainder.



#### LAND CAPABILITY CLASSIFICATION LEGEND

##### CLI Class

- 1 - No significant limitation
- 2 - Slight limitations
- 3 - Moderate limitations
- 4 - Severe limitations
- 5 - Very severe limitations
- 6 - Production is not feasible
- 7 - No capability

##### Limitations

- B - brush/tree cover
- C - climate
- D - low permeability
- E - erosion damage
- F - poor fertility
- G - Steep slopes
- H - temperature
- I - flooding
- J - field size/shape
- K - shallow profile development
- M - low moisture holding, adverse texture
- N - high salinity
- P - excessive surface stoniness
- R - shallowness to bedrock
- S - high solidity
- T - adverse topography
- U - prior earth moving
- V - high acid content
- W - excessive wetness/poor drainage
- X - deep organic deposit
- Y - slowly permeable
- Z - relatively impermeable

Division: 5

Roll: 07108011

File: PL20220107

Printed: June 24, 2022

Legal: A portion of S-08-27-26-W04M



## Landowner Circulation Area

### Redesignation Proposal

To redesignate the subject lands from Agricultural, General District (A-GEN) to Residential, Rural District (R-RUR) in order to facilitate the creation of a  $\pm 4.35$  hectare ( $\pm 10.75$  acre) parcel with  $\pm 56.42$  hectare ( $\pm 139.41$  acre) remainder.

### Legend

Support



Not Support



Division: 5  
Roll: 07108011  
File: PL20220107  
Printed: June 24, 2022  
Legal: A portion of S-08-27-26-W04M

