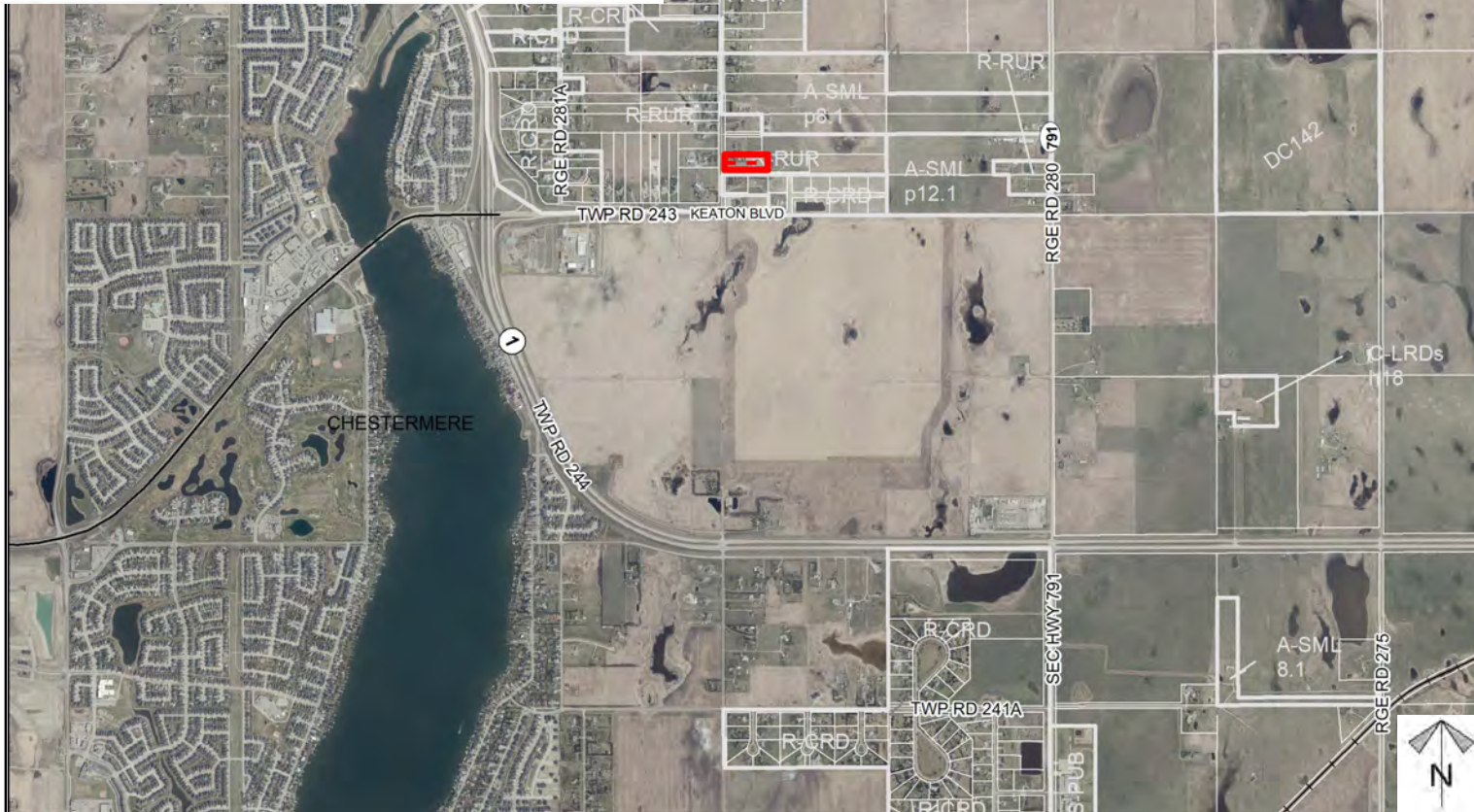
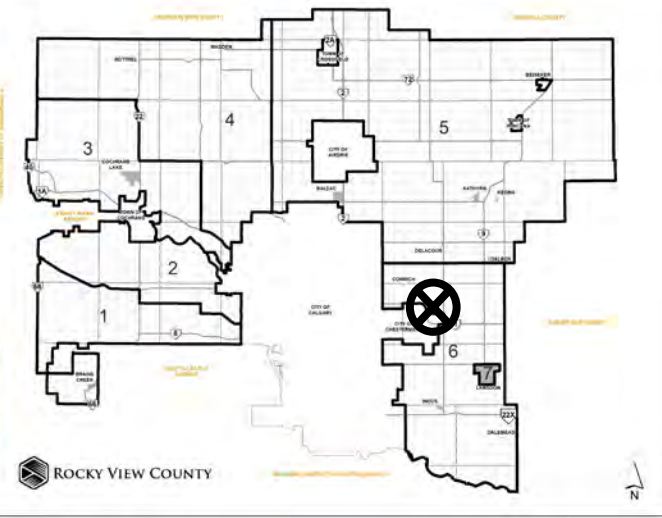




Location & Context

Redesignation Proposal

To redesignate the subject lands from Residential, Rural District (R-RUR) to Residential, Country Residential District (R-CRD) to accommodate future subdivision.



Division: 6
Roll: 04324022
File: PL20220020
Printed: Feb 23, 2022
Legal: Lot:10 Plan:9411495
within SW-24-24-28-W04M

Development Proposal

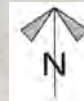
Redesignation Proposal

To redesignate the subject lands from Residential, Rural District (R-RUR) to Residential, Country Residential District (R-CRD) to accommodate future subdivision.

R-RUR → R-CRD
 ± 1.63 hectares $\pm (\pm 4.03$ acres)

RGE RD 281

Division: 6
 Roll: 04324022
 File: PL20220020
 Printed: Feb 23, 2022
 Legal: Lot:10 Plan:9411495
 within SW-24-24-28-W04M





Environmental

Redesignation Proposal

To redesignate the subject lands from Residential, Rural District (R-RUR) to Residential, Country Residential District (R-CRD) to accommodate future subdivision.



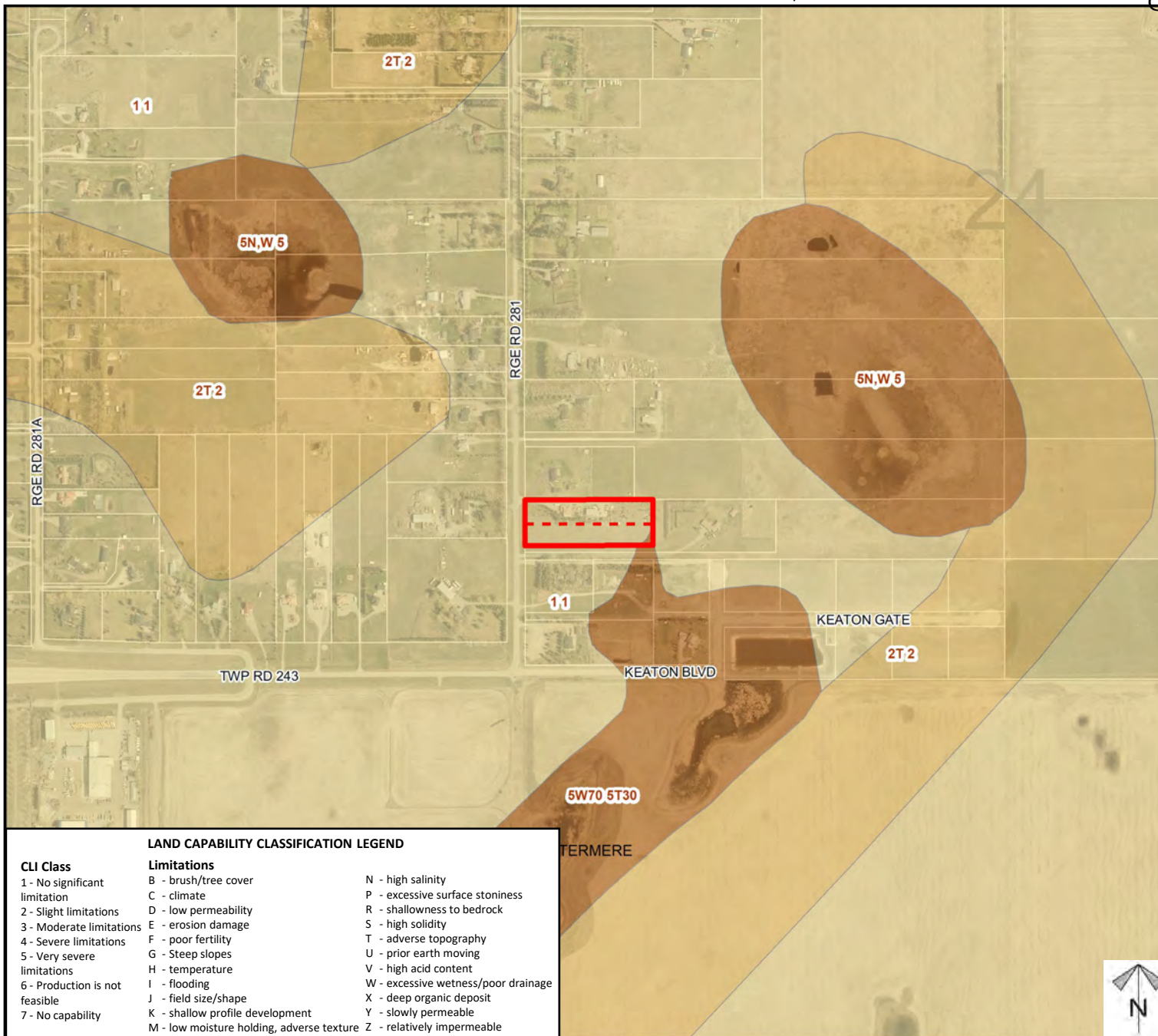
-  Subject Lands
-  Contour - 2 meters
-  Riparian Setbacks
-  Alberta Wetland Inventory
-  Surface Water

Division: 6
 Roll: 04324022
 File: PL20220020
 Printed: Feb 23, 2022
 Legal: Lot: 10 Plan: 9411495
 within SW-24-24-28-W04M

Soil Classifications

Redesignation Proposal

To redesignate the subject lands from Residential, Rural District (R-RUR) to Residential, Country Residential District (R-CRD) to accommodate future subdivision.



LAND CAPABILITY CLASSIFICATION LEGEND

CLI Class

- 1 - No significant limitation
- 2 - Slight limitations
- 3 - Moderate limitations
- 4 - Severe limitations
- 5 - Very severe limitations
- 6 - Production is not feasible
- 7 - No capability

Limitations

- B - brush/tree cover
- C - climate
- D - low permeability
- E - erosion damage
- F - poor fertility
- G - Steep slopes
- H - temperature
- I - flooding
- J - field size/shape
- K - shallow profile development
- M - low moisture holding, adverse texture

- N - high salinity
- P - excessive surface stoniness
- R - shallowness to bedrock
- S - high solidity
- T - adverse topography
- U - prior earth moving
- V - high acid content
- W - excessive wetness/poor drainage
- X - deep organic deposit
- Y - slowly permeable
- Z - relatively impermeable

Division: 6
 Roll: 04324022
 File: PL20220020
 Printed: Feb 23, 2022
 Legal: Lot:10 Plan:9411495
 within SW-24-24-28-W04M

Landowner Circulation Area

Redesignation Proposal

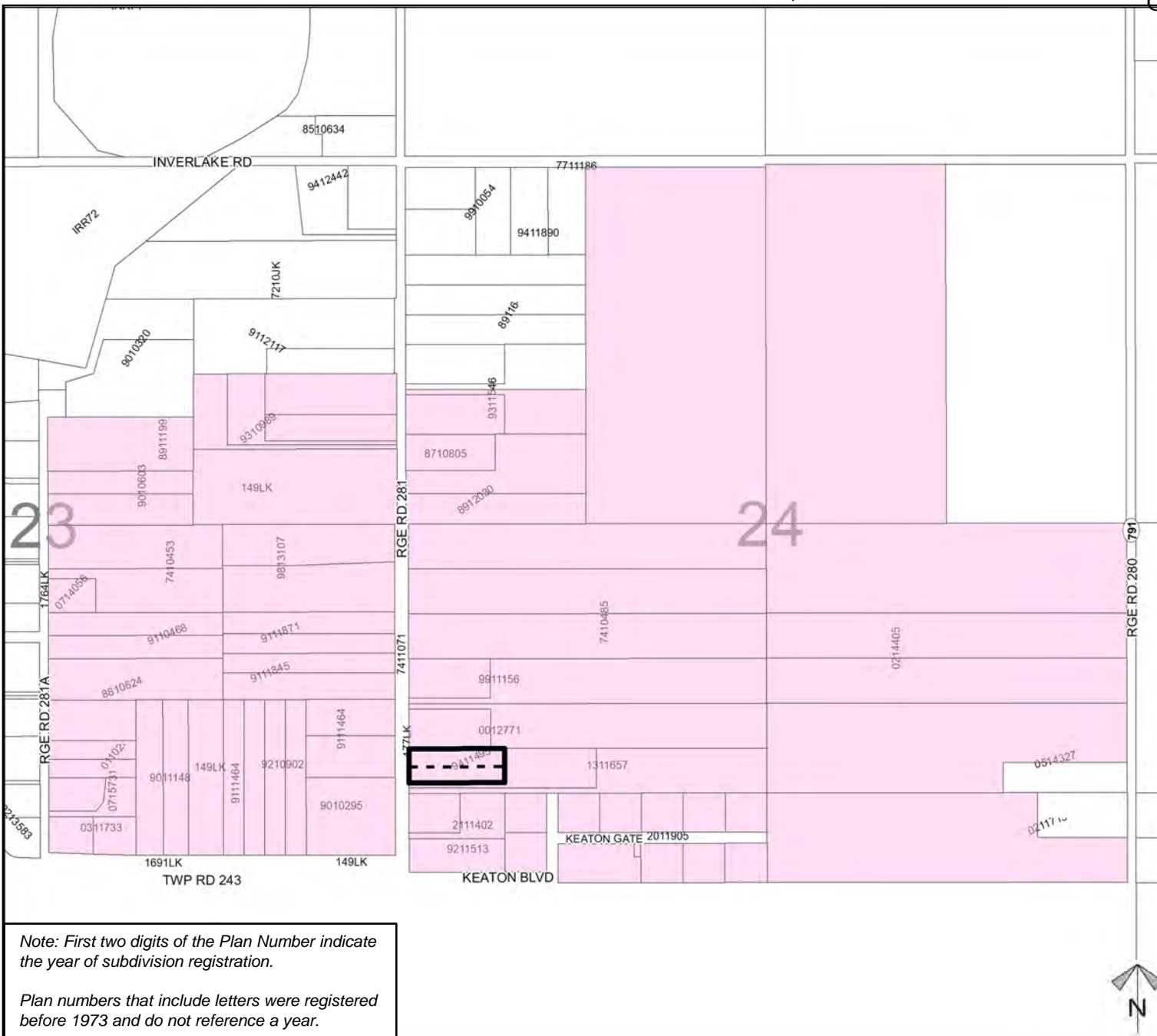
To redesignate the subject lands from Residential, Rural District (R-RUR) to Residential, Country Residential District (R-CRD) to accommodate future subdivision.

Legend

Support



Not Support



Note: First two digits of the Plan Number indicate the year of subdivision registration.

Plan numbers that include letters were registered before 1973 and do not reference a year.

Division: 6
 Roll: 04324022
 File: PL20220020
 Printed: Feb 23, 2022
 Legal: Lot:10 Plan:9411495
 within SW-24-24-28-W04M