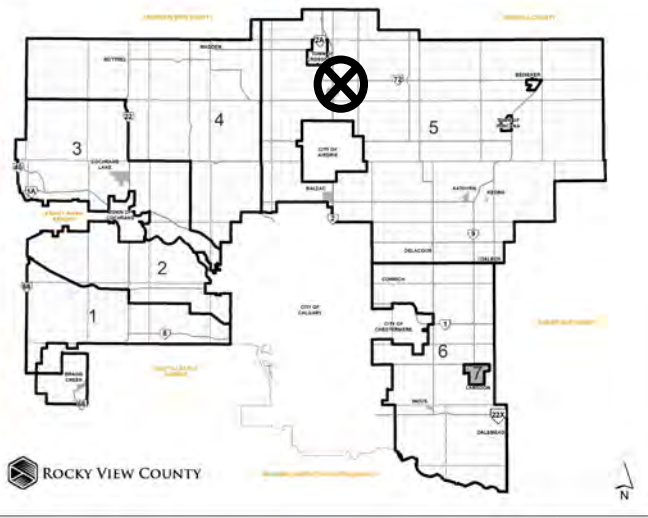


Location & Context

Redesignation Proposal

To redesignate the subject ± 35.30 ha (± 87.52) parcel from Agricultural, General District (A-GEN) to Direct Control District (DC) to allow for the future subdivision of ± 17.81 ha (± 44.01 acres) and the future development of a Solar Farm, Electric Vehicle Charging Station, Electric Storage System, and Electronic Data Processing on that parcel; thereby leaving a ± 17.49 ha (± 43.22 acres) balance parcel.

Division: 5
 Roll: 08410002
 File: PL20210124
 Printed: Aug 25, 2021
 Legal: A portion of NE-10-28-29-W04M





Development Proposal

Redesignation Proposal

To redesignate the subject ± 35.30 ha (± 87.52) parcel from Agricultural, General District (A-GEN) to Direct Control District (DC) to allow for the future subdivision of ± 17.81 ha (± 44.01 acres) and the future development of a Solar Farm, Electric Vehicle Charging Station, Electric Storage System, and Electronic Data Processing on that parcel; thereby leaving a ± 17.49 ha (± 43.22 acres) balance parcel.

A-GEN \rightarrow DC
 ± 35.30 ha (± 87.52)

Division: 5
Roll: 08410002
File: PL20210124
Printed: Aug 25, 2021
Legal: A portion of NE-10-28-29-W04M





Environmental

Redesignation Proposal

To redesignate the subject ± 35.30 ha (± 87.52) parcel from Agricultural, General District (A-GEN) to Direct Control District (DC) to allow for the future subdivision of ± 17.81 ha (± 44.01 acres) and the future development of a Solar Farm, Electric Vehicle Charging Station, Electric Storage System, and Electronic Data Processing on that parcel; thereby leaving ± 17.49 ha (± 43.01 acres) remaining in the A-GEN District.

-  Subject Lands
-  Contour - 2 meters
-  Riparian Setbacks
-  Alberta Wetland Inventory
-  Surface Water

Division: 5
Roll: 08410002
File: PL20210124
Printed: Aug 25, 2021
Legal: A portion of NE-10-28-29-W04M





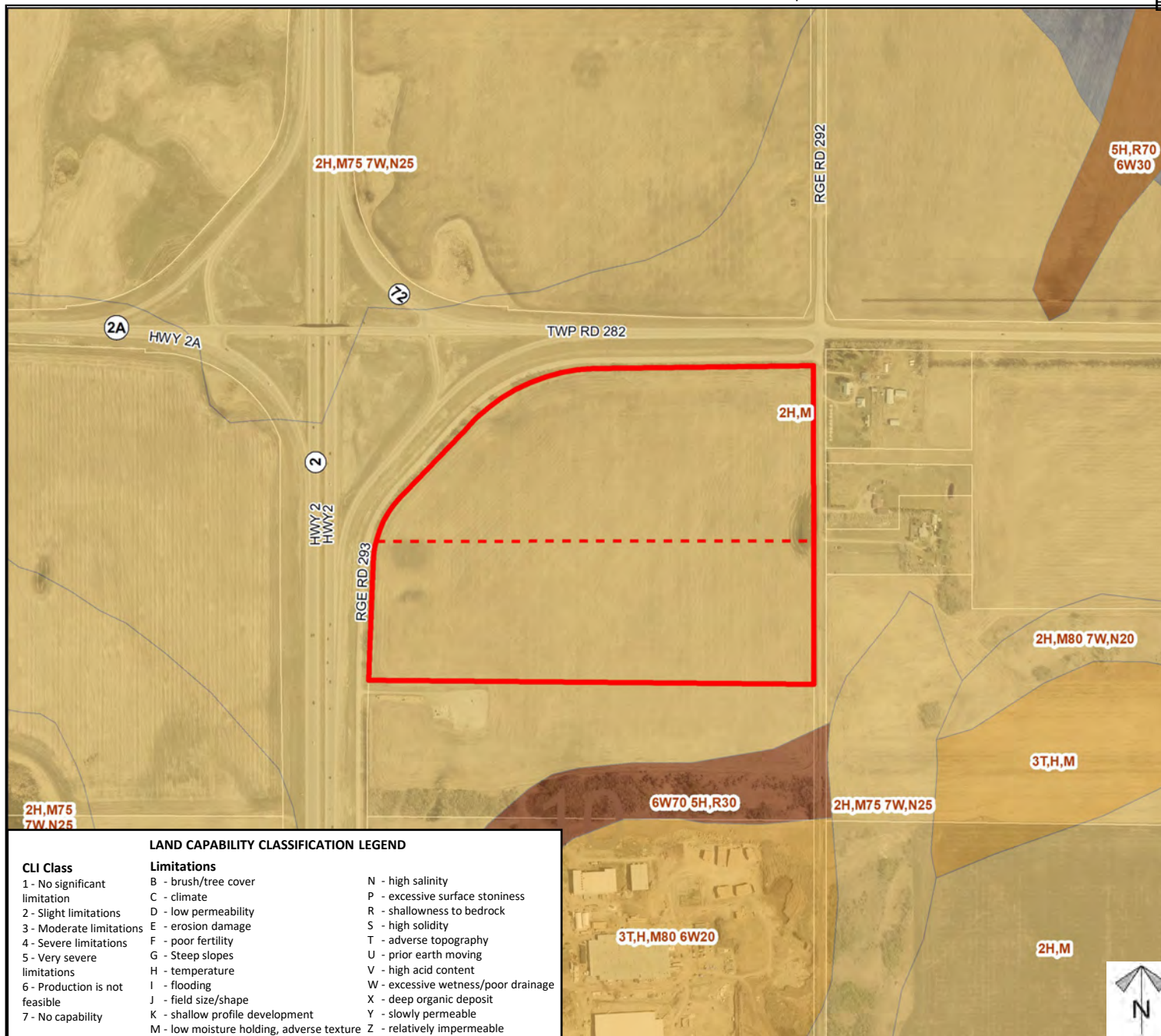
Soil Classifications

Redesignation Proposal

To redesignate the subject ± 35.30 ha (± 87.52) parcel from Agricultural, General District (A-GEN) to Direct Control District (DC) to allow for the future subdivision of ± 17.81 ha (± 44.01 acres) and the future development of a Solar Farm, Electric Vehicle Charging Station, Electric Storage System, and Electronic Data Processing on that parcel; thereby leaving a ± 17.49 ha (± 43.22 acres) balance parcel.

LAND CAPABILITY CLASSIFICATION LEGEND

CLI Class	Limitations	
1 - No significant limitation	B - brush/tree cover	N - high salinity
2 - Slight limitations	C - climate	P - excessive surface stoniness
3 - Moderate limitations	D - low permeability	R - shallowness to bedrock
4 - Severe limitations	E - erosion damage	S - high solidity
5 - Very severe limitations	F - poor fertility	T - adverse topography
6 - Production is not feasible	G - Steep slopes	U - prior earth moving
7 - No capability	H - temperature	V - high acid content
	I - flooding	W - excessive wetness/poor drainage
	J - field size/shape	X - deep organic deposit
	K - shallow profile development	Y - slowly permeable
	M - low moisture holding, adverse texture	Z - relatively impermeable



Division: 5
Roll: 08410002
File: PL20210124
Printed: Aug 25, 2021
Legal: A portion of NE-10-28-29-W04M



Landowner Circulation Area

Redesignation Proposal

To redesignate the subject ± 35.30 ha (± 87.52) parcel from Agricultural, General District (A-GEN) to Direct Control District (DC) to allow for the future subdivision of ± 17.81 ha (± 44.01 acres) and the future development of a Solar Farm, Electric Vehicle Charging Station, Electric Storage System, and Electronic Data Processing on that parcel; thereby leaving a ± 17.49 ha (± 43.22 acres) balance parcel.

Legend

Support



Opposition



Division: 5

Roll: 08410002

File: PL20210124

Printed: Aug 25, 2021

Legal: A portion of NE-10-28-29-W04M

