



TRANSPORTATION SERVICES

TO: Public Presentation Committee
DATE: September 14, 2022 **DIVISION:** All
TIME: Morning Appointment
FILE: N/A **APPLICATION:** N/A
SUBJECT: Polar Bear Refuge Reserve

POLICY DIRECTION:

The purpose of the Public Presentation Committee (PPC) ensures that Rocky View County provides a forum for members of the public and stakeholder groups to present information and updates to the County to ensure the County understands the needs and concerns of its communities. One of the Committee's functions is to hear presentations from organizations such as Dr. Jake Veasey from Care for the Rare.

EXECUTIVE SUMMARY:

Dr. Jake Veasey from Care for the Rare will present to the Public Presentation Committee regarding requesting allocation of County Land for developing a Polar Bear Refuge Reserve and will be available for questions and discussion following the presentation.

DISCUSSION:

The purpose of this presentation is to provide an outline for a unique opportunity to invest in the future of Polar Bears and in communities within the Rocky View County.

Administration has included a copy of the request form as Attachment 'A' and the presentation as Attachment 'B'.

BUDGET IMPLICATIONS:

There are no budget implications at this time.

OPTIONS:

- Option #1: THAT the Polar Bear Refuge Reserve presentation by Dr. Jake Veasey of Care for the Rare be received as information.
- Option #2: THAT alternative direction be provided.

Administration Resources

Bhupesh Sakalley, Transportation Services



ROCKY VIEW COUNTY

Respectfully submitted,

Concurrence,

“Byron Riemann”

“Dorian Wandzura”

Executive Director
Operations

Chief Administrative Officer

BS/bg

ATTACHMENTS:

Attachment ‘A’ – Request to Present Form

Attachment ‘B’ – Presentation from Dr. Jake Veasey - Care for the Rare

**ROCKY VIEW COUNTY PUBLIC PRESENTATION COMMITTEE (PPC)
REQUEST TO PRESENT FORM**

Name of the group/individual:	Care for the Rare / Polar Bear Refuge
Representative(s) for the group:	Dr Jake Veasey
Contact telephone/cell number:	236 668 6024
E-mail:	jake@carefortherare.com
Presentation Topic:	The Polar Bear Refuge

Do you have an active planning application on this matter? ☐ Yes ☒ No

Are you planning on submitting a planning application on this in the next six (6) months? ☐ Yes ☒ No

Please check off the appropriate information about the presentation:

☒ Information - Public Interest ☐ Community Group Update ☒ Development Proposal

☒ Other, please explain

Overview of the topic and purpose of your presentation:

An ice-free summer in the Arctic is immanent; countless polar bears will starve signalling their extinction in the wild. Conventional conservation won't stop this but we can by rescuing starving bears forced into conflict with people and bringing them to a vast sanctuary in Rocky View County. Here their behavioural and ecological needs will be met allowing us to research how we can help a warming Arctic adapt to support polar bears during ice-free months through ecosystem-based adaptation (EbA). The project will be funded by revenues from 100,000 immersive educational and safari experiences each year.

If a group, tell us about your group (mandate/membership, including a statement on why this matter should go before PPC)

Care for the Rare / Polar Bear Refuge is an impact partnership focusing on the interface between communities, conservation and animal welfare. The area west of Calgary meets the economic and ecological needs of this unique project; it is ecologically comparable to environment polar bears need to adapt to to survive a warming Arctic, and has access to a large visitor base capable of financing this impact initiative. This globally unique project will draw interest from around the world, adding much to the status of the region in terms of environmental stewardship, innovation, community engagement and nature tourism. Additionally, partnering with the Bateman Foundation, we intend to provide 10,000 funded student experiences per year to Rocky View County youth.

The members of the Public Presentation Committee are County Councillors, but the meetings are not Council meetings, and Council decisions are not made.

Meetings are held to receive information and share your vision with the Committee and not to ask for advice on what should be done on a specific property.

If you would like to bring a matter to the Committee's attention, that does not require a decision of Council, you can apply to make a presentation to the Committee.

Examples of presentations that the Public can present to the Committee include:

- Developers and/or landowners can submit their vision for a future project that will not require a Council decision;
- not-for-profit organizations about their work in the community, or about recognition for special volunteers;
- post-secondary institutions or research groups about studies or surveys that might interest the County;
- resident or community groups about future plans or current activities that the groups are involved in; or
- businesses or organizations that wish to apprise Committee members of projects or initiatives that will not require a Council decision.

Examples of presentations that Public cannot be accepted by the Committee include:

- the subject matter of the presentation is related to an active application from the presenter or the presenter intends to submit an application within six months of the presentation date;
- the subject matter of the presentation is outside of the authority or jurisdiction of Rocky View County;
- the subject matter of the presentation is more appropriate for a different committee, board, commission, or other body; or
- individuals or groups wishing to provide technical, legal, or similar information when they possess no relevant qualifications or expertise.

Presentations are strictly limited to 20 minutes, but Committee members may ask questions afterwards.

How to Submit a Presentation Request

Forms can be submitted via email to legislativeservices@rockyview.ca, or print it and send or drop off a paper copy to:

Rocky View County
Attention: Legislative and Intergovernmental Services
262075 Rocky View Point
Rocky View County, AB
T4A 0X2

Please make your requests as early as possible. Requests are to be submitted to four weeks prior to the scheduled PPC meeting order for the presentation to be included on the agenda.

Once you have submitted your request, a member from the Legislative & Intergovernmental Services department will be in contact with you to discuss next steps.

If you are placed on the meeting agenda, you must provide Legislative and Intergovernmental Services with a final copy of any print or visual materials (including PowerPoint or similar slides at least 15 days before the presentation. Once submitted, changes to this material are not permitted. If changes are needed, your presentation will be rescheduled.

Questions

If you have questions about presenting to the Public Presentation Committee, contact Rocky View County Legislative and Intergovernmental Services at 403.230.1401 or legislativeservices@rockyview.ca.



This deck outlines a unique opportunity to invest in the future of Polar Bears and in communities in Rocky View County.

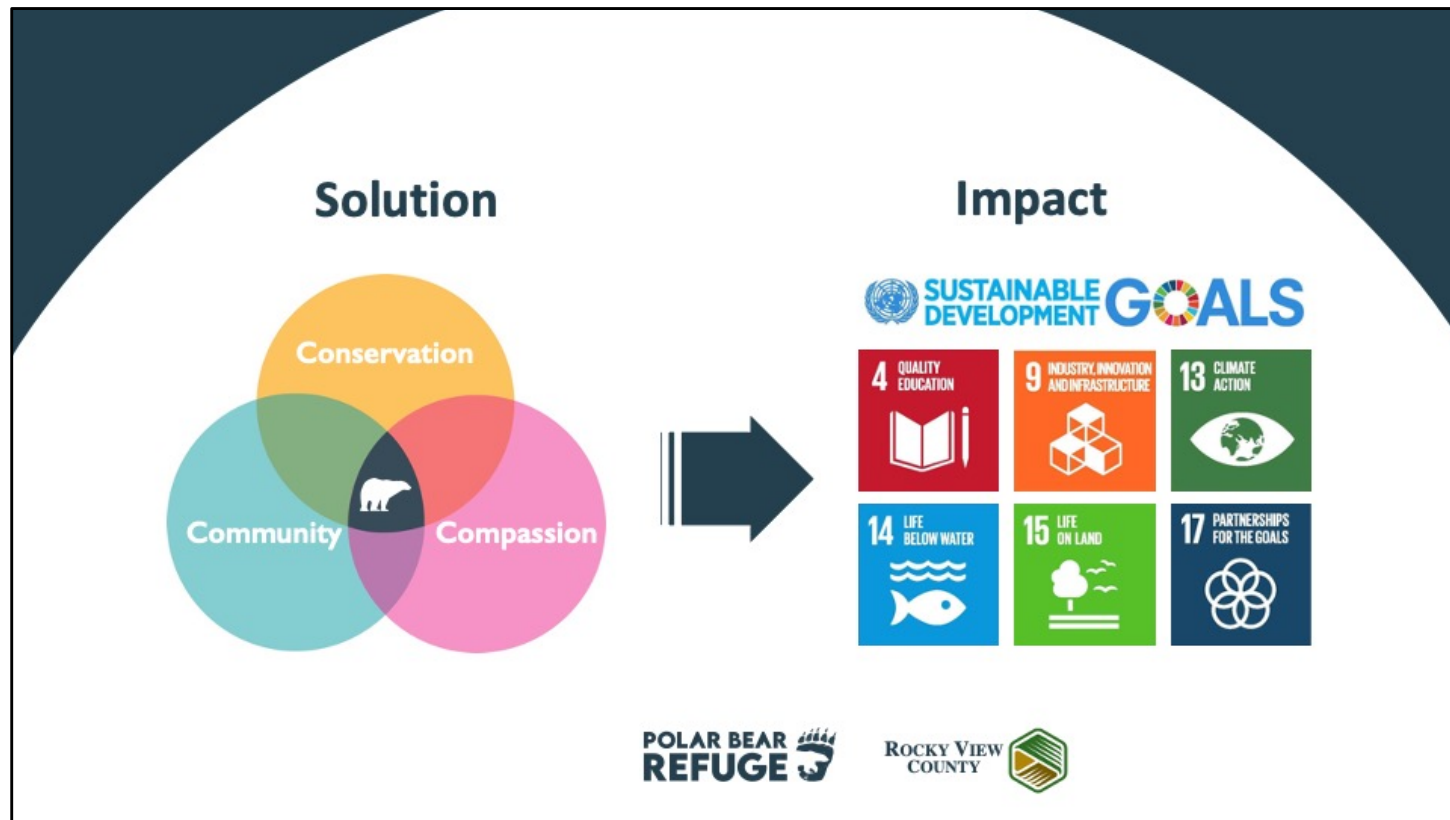
The Problem



**POLAR BEAR
REFUGE** 

ROCKY VIEW
COUNTY 

In just 15 years, the Arctic is predicted to experience its first ice-free summer in millennia. Countless polar bears will starve and long-term, their extinction in the wild appears to be inevitable. Current conservation paradigms won't stop this, but what if it were possible to help polar bears survive in an ice-free Arctic?



That's exactly what the Polar Bear Refuge (PBR) aims to achieve by operating at the nexus between Conservation, Compassion and Community engagement.

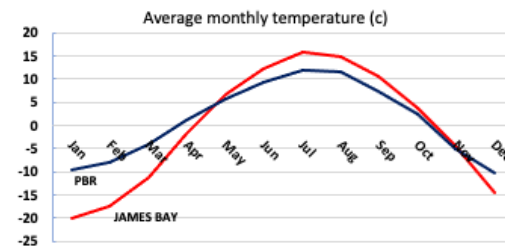
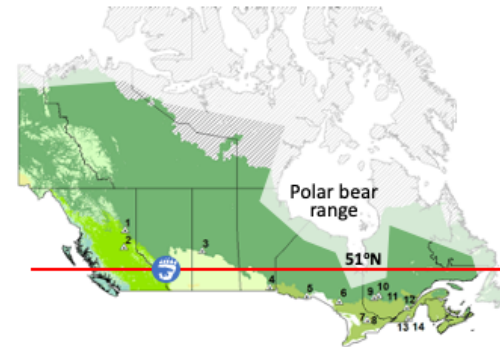
PBR will rescue conflict bears that would otherwise be killed, bring them to what will be the largest polar bear facility on earth and guarantee higher welfare for them than they would experience in the wild.

Here PBR will develop actionable conservation solutions to ensure bears can survive in an ice-free Arctic, and by partnering with indigenous communities, PBR will ensure solutions work for bears and for people.

Finally, PBR will provide life changing experiences for 100,000 visitors each year, including preferential, subsidized access to Rocky View County schools.

Location

- The area of Rocky View County west of Calgary is within the latitude of polar bears in Canada, and offers a habitat and climate that is ecologically comparable to habitats polar bears will need to forage in in the summer months as the climate warms
- Within 100km of this target area is a resident population of ~1.3m and inbound tourism equivalent to 11m overnight stays ensuring PBR's financial viability and educational impact



PBR is targeting its search to the foothills of Rocky View County between Calgary and Canmore, within striking distance of the Highway 1.



Worldwide, more people visit wildlife attractions each year than attend organised sporting events; attendance at the nearby Calgary Zoo is 50% greater than the combined ticket sales for the Calgary Flames and Calgary Stampeders.

The Opportunity: The UnZoo



Typical zoo



Polar Bear Refuge



By providing safe, immersive “safari” experiences, PBR is so different from any polar bear facility that has gone before it could be considered as an ‘UnZoo’.

Rather than having hundreds of habitats with high overheads, poor welfare and modest visitor experiences, nature will provide and maintain PBR’s vast habitat, ensuring peak welfare, impactful immersive experiences and uniquely, the ability to generate actionable conservation solutions for polar bears in an ice-free Arctic.

Key Personnel



Dr Jake Veasey, CEO

Internationally respected conservation biologist / animal welfare scientist

20 years leading renowned wildlife attractions in Europe and North America

Established some of the world's most successful wildlife facilities



Gary Edmondson, COO

20 years of executive leadership experience in the London Insurance Market

Established a successful insurance provider operating across the UK, Europe and the Middle East



Our team is uniquely placed to deliver this one of a kind initiative combining the scientific credentials with impeccable sector specific, and business development experience.



We hope you can join us in helping to secure a future for polar bears, and in doing so, establish Rocky View County as a global hub for conservation innovation and community engagement.

Thank you for your consideration.

For further information contact jake@carefortherare.com.