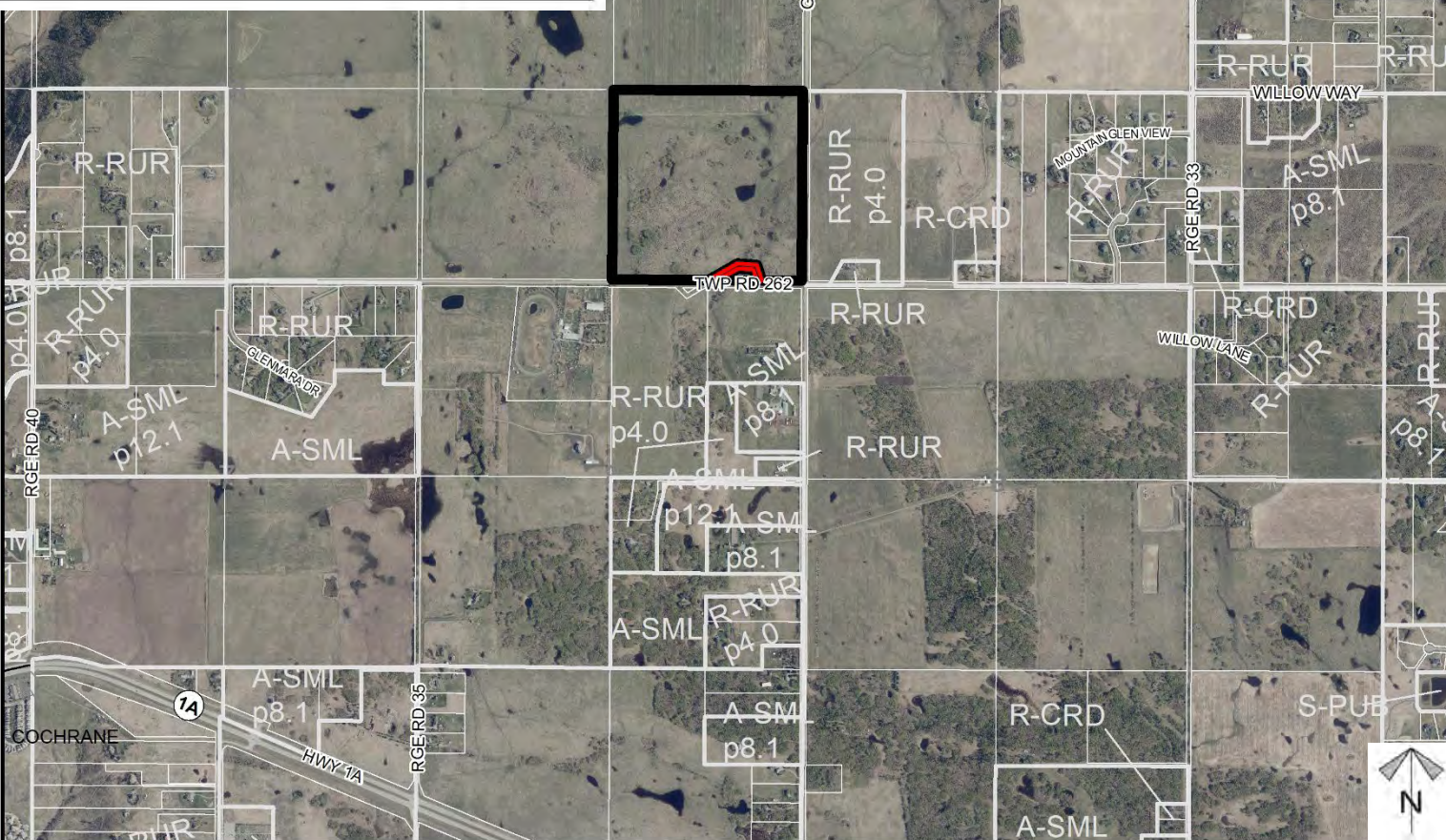
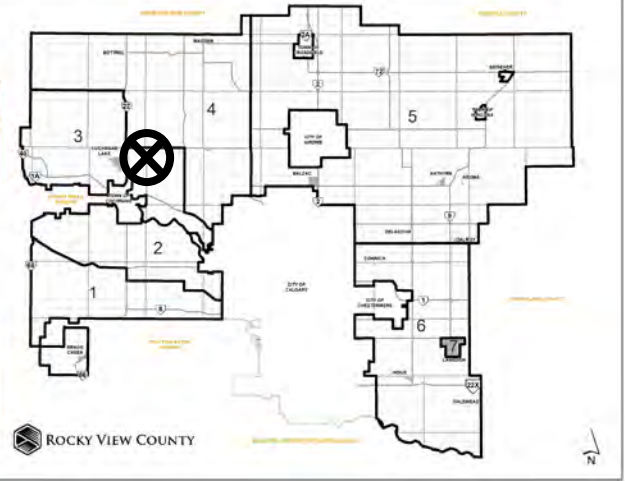


Location & Context

Road Closure Proposal

To close a ± 0.51 hectare (± 1.25 acre) of the undeveloped road (Road Plan 2479 Q), in order to facilitate future consolidation with the subject land.



Division: 03
Roll: 06717003
File: PL20210002
Legal: A portion of SE-17-26-03-W05M

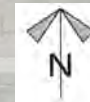
Printed: Jan 13, 2021

Development Proposal

Road Closure Proposal

To close a ± 0.51 hectare (± 1.25 acre) of the undeveloped road (Road Plan 2479 Q), in order to facilitate future consolidation with the subject land.

The applicant proposes to close
this portion of Road Plan 2479Q



Division: 03
Roll: 06717003
File: PL20210002
Legal: A portion of SE-17-26-03-W05M

Printed:, Jan 13,2021

Road Closure Proposal

To close all of Road Plan 2479Q within SE-17-26-3-W05M, containing ± 0.51 hectare (± 1.25 acre) portion of the undeveloped road allowance for the purpose of consolidation.



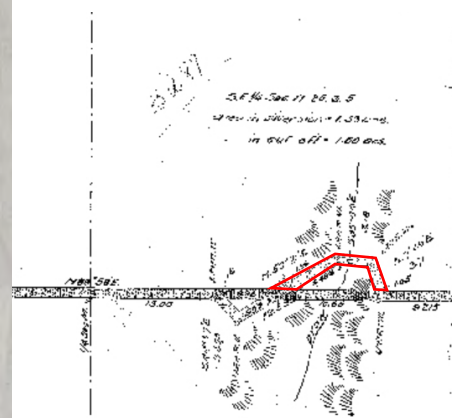
Township Road 262

Glendale Road

— PLAN —
Showing Survey of
COCHRANE LOCHEND TRAIL
— in —
T₂₆ R₂₆ S₂₆ W₂₆ of S.
— by —
John M. Empey D.E. & S.
& A.C. Talbot D.L.S.
Scale 8 chs = 1 inch.
— 1907 —

Sept 12 1861
R.V.C. 2479-Q

S.E. 1/4 Sec 17 T26 S. 5
Area in subdivision = 1.336 ac.
in out off = 1.00 ac.



N.E. 1/4 Sec 9 T26 S. 5
Area in subdivision = 1.16 ac.
in out off = .84 ac.

Road Closure Proposal

To close a ± 0.51 hectare (± 1.25 acre) of the undeveloped road (Road Plan 2479 Q), in order to facilitate future consolidation with the subject land.

Division: 03
Roll: 06717003
File: PL20210002
Legal: A portion of SE-17-26-03-W05M

Environmental

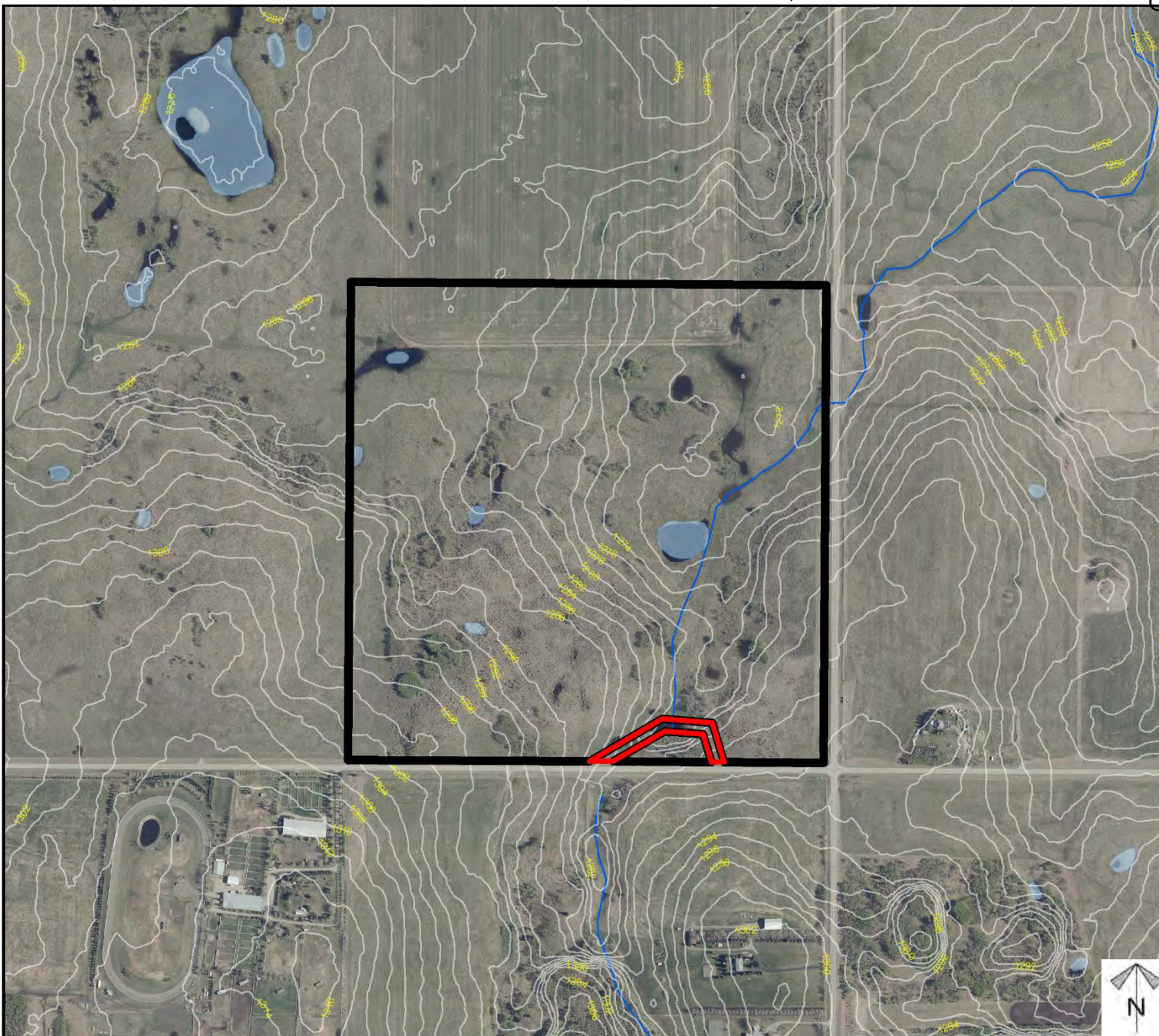
Road Closure Proposal

To close a ± 0.51 hectare (± 1.25 acre) of the undeveloped road (Road Plan 2479 Q), in order to facilitate future consolidation with the subject land.

-  Subject Lands
-  Contour - 2 meters
-  Riparian Setbacks
-  Alberta Wetland Inventory
-  Surface Water

Division: 03
 Roll: 06717003
 File: PL20210002
 Legal: A portion of SE-17-26-03-W05M

Printed: Jan 13, 2021

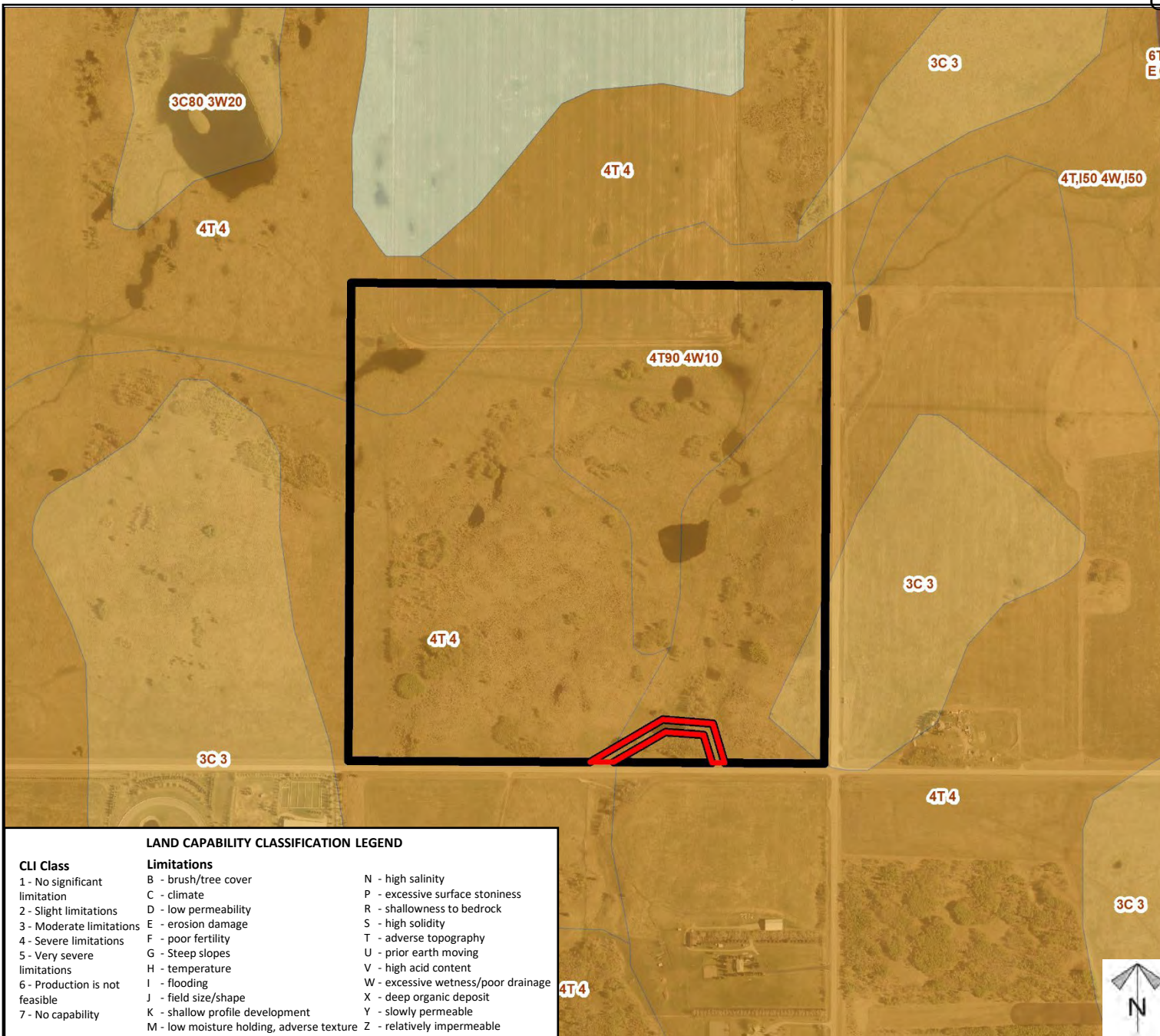




Soil Classifications

Road Closure Proposal

To close a ± 0.51 hectare (± 1.25 acre) of the undeveloped road (Road Plan 2479 Q), in order to facilitate future consolidation with the subject land.



LAND CAPABILITY CLASSIFICATION LEGEND

CLI Class	Limitations	
1 - No significant limitation	B - brush/tree cover	N - high salinity
2 - Slight limitations	C - climate	P - excessive surface stoniness
3 - Moderate limitations	D - low permeability	R - shallowness to bedrock
4 - Severe limitations	E - erosion damage	S - high solidity
5 - Very severe limitations	F - poor fertility	T - adverse topography
6 - Production is not feasible	G - Steep slopes	U - prior earth moving
7 - No capability	H - temperature	V - high acid content
	I - flooding	W - excessive wetness/poor drainage
	J - field size/shape	X - deep organic deposit
	K - shallow profile development	Y - slowly permeable
	M - low moisture holding, adverse texture	Z - relatively impermeable

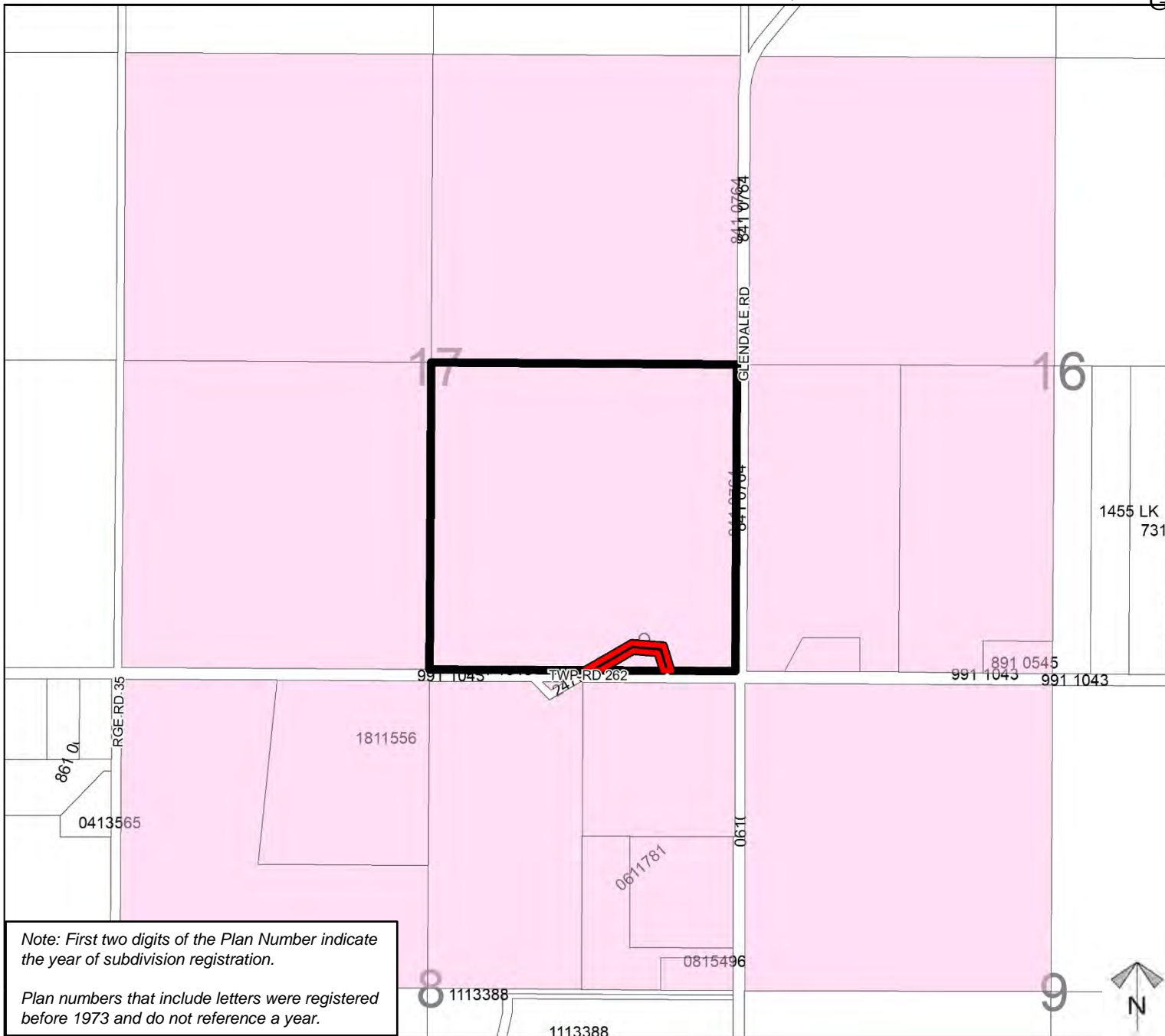
Division: 03
Roll: 06717003
File: PL20210002
Legal: A portion of SE-17-26-03-W05M

Printed: Jan 13, 2021

Landowner Circulation Area

Road Closure Proposal



To close a ± 0.51 hectare (± 1.25 acre) of the undeveloped road (Road Plan 2479 Q), in order to facilitate future consolidation with the subject land.



Note: First two digits of the Plan Number indicate the year of subdivision registration.

Plan numbers that include letters were registered before 1973 and do not reference a year.

Legend

- Support 
- Opposition 

Division: 03
 Roll: 06717003
 File: PL20210002
 Legal: A portion of SE-17-26-03-W05M

Printed: Jan 13, 2021