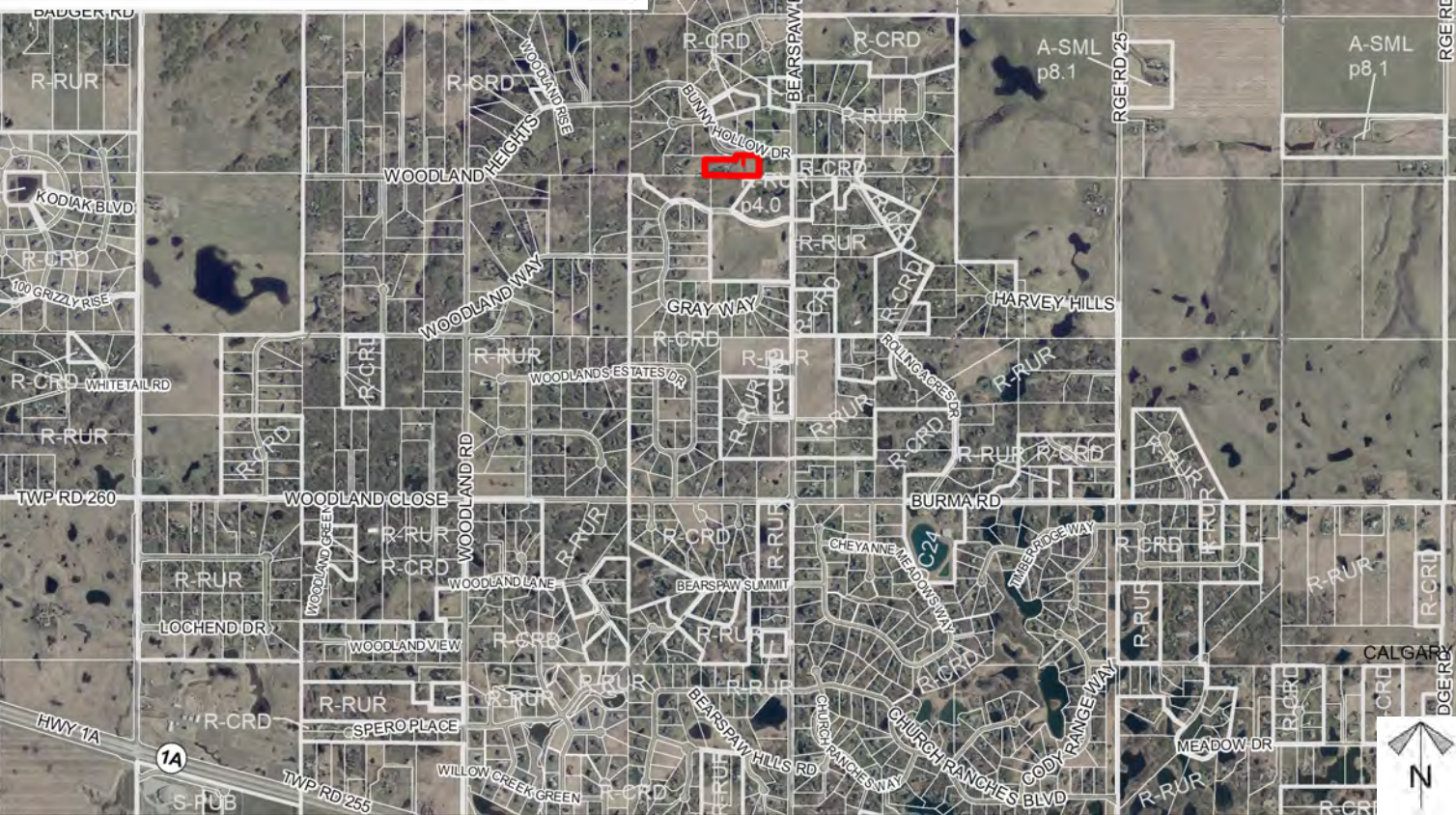
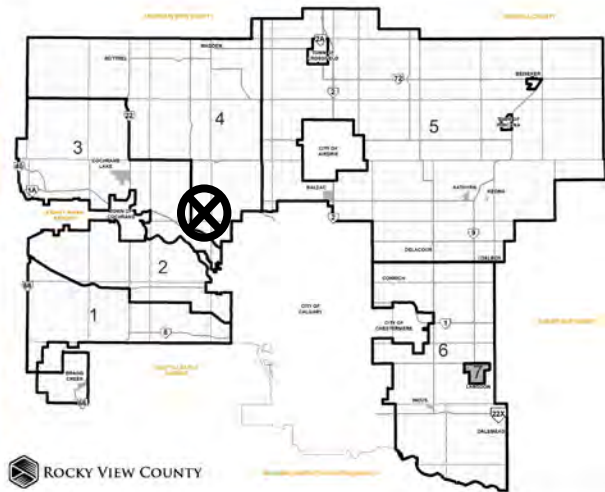


# Location & Context

## Redesignation Proposal

To redesignate the subject lands from Residential, Rural District (R-RUR) to Residential, Country Residential District (R-CRD) to accommodate future subdivision.



Division: 4  
 Roll: 06712022  
 File: PL20210178  
 Printed: Nov 3, 2021  
 Legal: Lot:9 Block:1  
 Plan:9012117 within SE-12-26-03-W05M

# Development Proposal

## Redesignation Proposal

To redesignate the subject lands from Residential, Rural District (R-RUR) to Residential, Country Residential District (R-CRD) to accommodate future subdivision.



R-RUR → R-CRD  
5.93 acres  
(2.39 hectares)

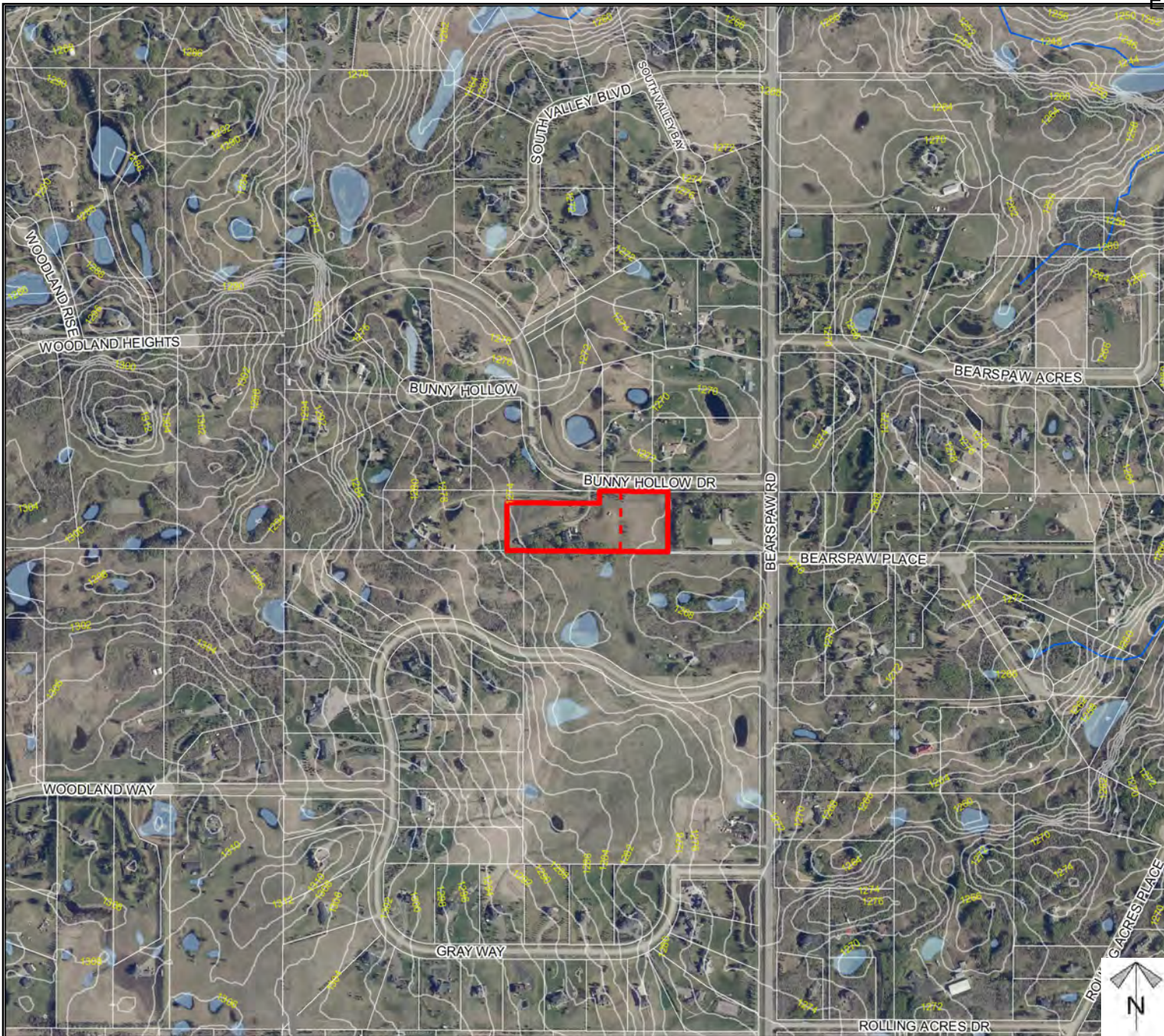


Division: 4  
Roll: 06712022  
File: PL20210178  
Printed: Nov 3, 2021  
Legal: Lot:9 Block:1  
Plan:9012117 within SE-12-26-03-W05M

# Environmental

## Redesignation Proposal

To redesignate the subject lands from Residential, Rural District (R-RUR) to Residential, Country Residential District (R-CRD) to accommodate future subdivision.



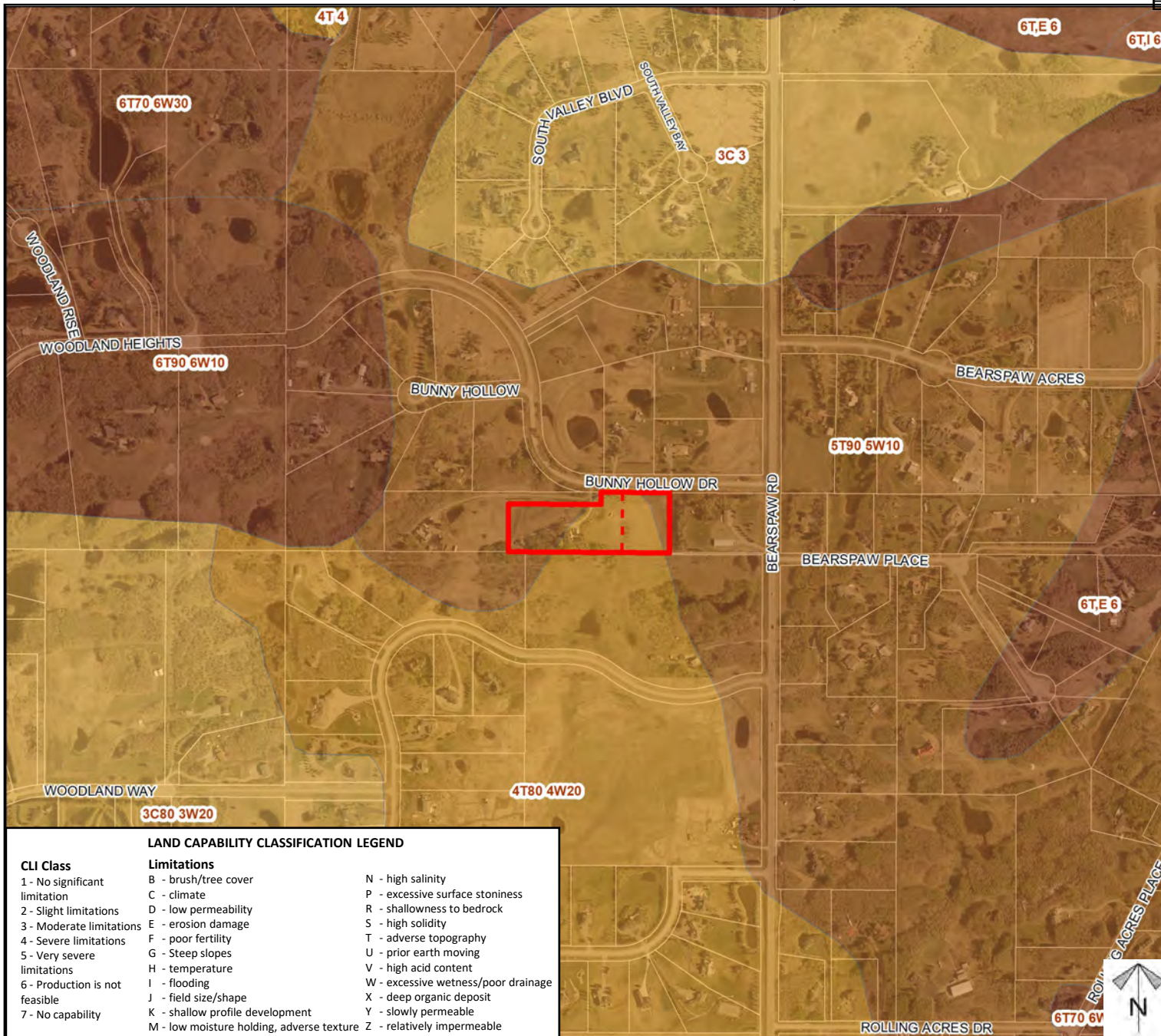
-  Subject Lands
-  Contour - 2 meters
-  Riparian Setbacks
-  Alberta Wetland Inventory
-  Surface Water

Division: 4  
 Roll: 06712022  
 File: PL20210178  
 Printed: Nov 3, 2021  
 Legal: Lot:9 Block:1  
 Plan:9012117 within SE-12-26-03-W05M

# Soil Classifications

## Redesignation Proposal

To redesignate the subject lands from Residential, Rural District (R-RUR) to Residential, Country Residential District (R-CRD) to accommodate future subdivision.



**LAND CAPABILITY CLASSIFICATION LEGEND**

CLI Class	Limitations
1 - No significant limitation	B - brush/tree cover
2 - Slight limitations	C - climate
3 - Moderate limitations	D - low permeability
4 - Severe limitations	E - erosion damage
5 - Very severe limitations	F - poor fertility
6 - Production is not feasible	G - Steep slopes
7 - No capability	H - temperature
	I - flooding
	J - field size/shape
	K - shallow profile development
	M - low moisture holding, adverse texture
	N - high salinity
	P - excessive surface stoniness
	R - shallowness to bedrock
	S - high solidity
	T - adverse topography
	U - prior earth moving
	V - high acid content
	W - excessive wetness/poor drainage
	X - deep organic deposit
	Y - slowly permeable
	Z - relatively impermeable

Division: 4  
 Roll: 06712022  
 File: PL20210178  
 Printed: Nov 3, 2021  
 Legal: Lot:9 Block:1  
 Plan:9012117 within SE-12-26-03-W05M

