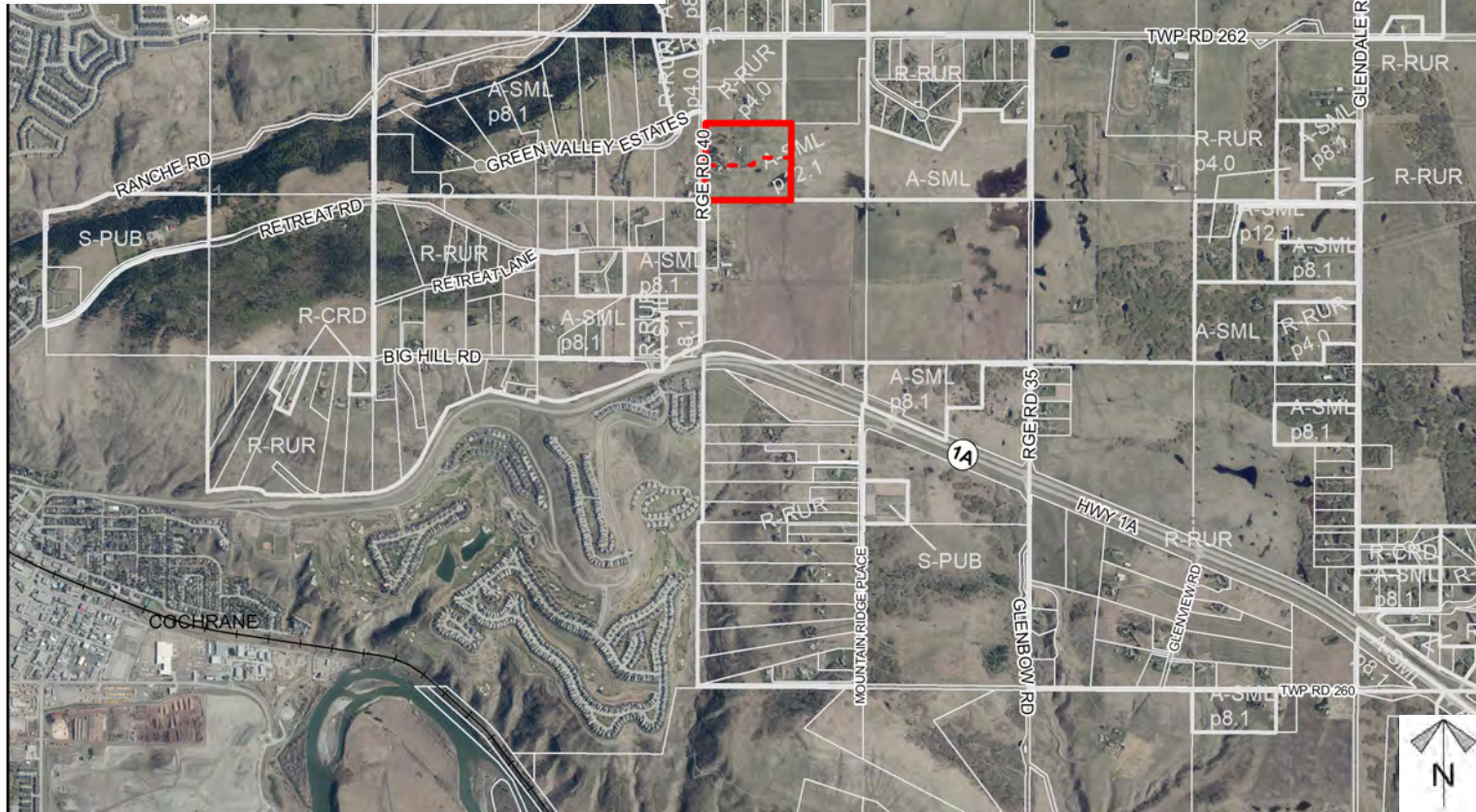
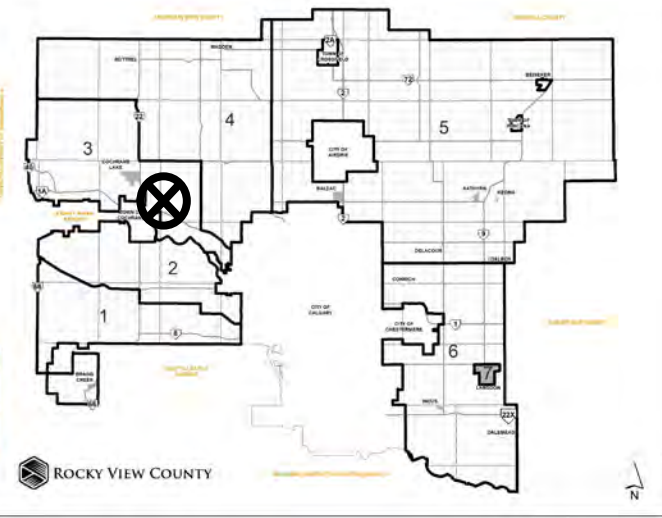




Location & Context

Redesignation Proposal

To redesignate the subject lands from Agricultural, Small Parcel District (A-SML p12.1) to Agricultural, Small Parcel District (A-SML p8.1) to accommodate future subdivision.



Division: 3
Roll: 06707002
File: PL20220063
Printed: April 28, 2022
Legal: Lot:3 Block:1
Plan:1110255 within NW-07-26-03-W05M



Development Proposal

Redesignation Proposal

To redesignate the subject lands from Agricultural, Small Parcel District (A-SML p12.1) to Agricultural, Small Parcel District (A-SML p8.1) to accommodate future subdivision.

RGE RD 40



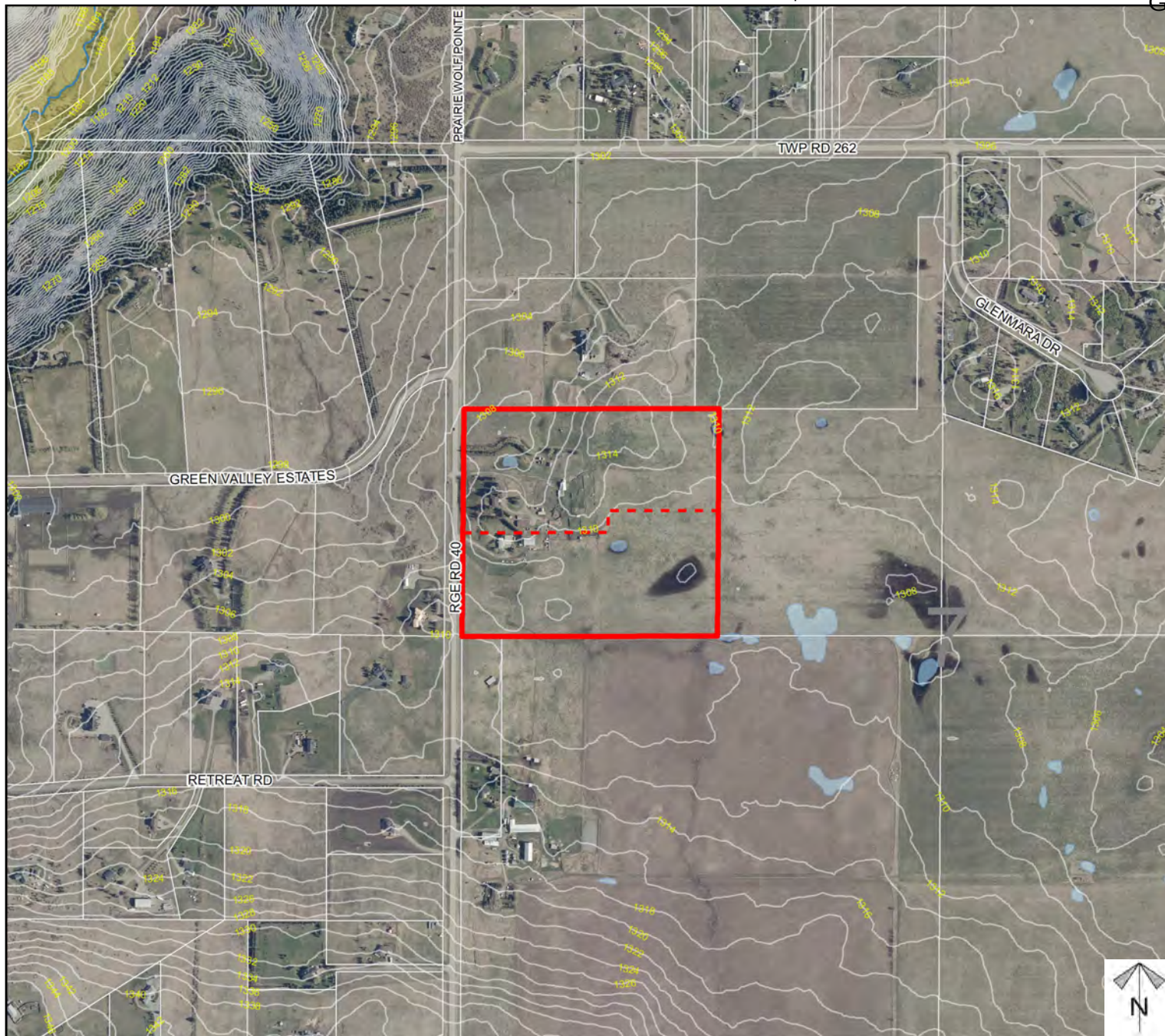
Division: 3
Roll: 06707002
File: PL20220063
Printed: April 28, 2022
Legal: Lot:3 Block:1
Plan:1110255 within NW-07-26-03-W05M



Environmental

Redesignation Proposal

To redesignate the subject lands from Agricultural, Small Parcel District (A-SML p12.1) to Agricultural, Small Parcel District (A-SML p8.1) to accommodate future subdivision.



- Subject Lands
- Contour - 2 meters
- Riparian Setbacks
- Alberta Wetland Inventory
- Surface Water

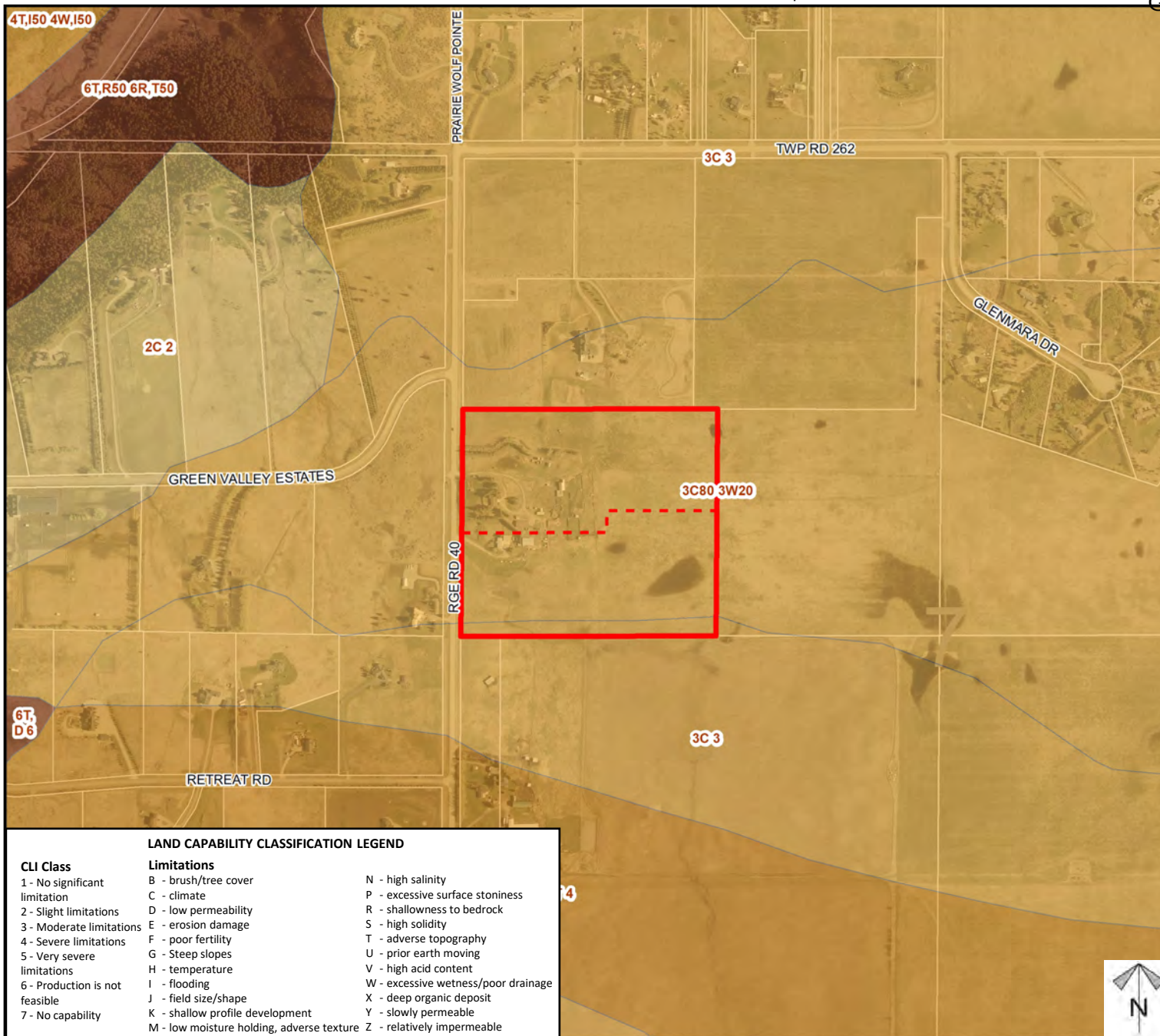
Division: 3
 Roll: 06707002
 File: PL20220063
 Printed: April 28, 2022
 Legal: Lot:3 Block:1
 Plan:1110255 within NW-07-26-03-W05M



Soil Classifications

Redesignation Proposal

To redesignate the subject lands from Agricultural, Small Parcel District (A-SML p12.1) to Agricultural, Small Parcel District (A-SML p8.1) to accommodate future subdivision.



LAND CAPABILITY CLASSIFICATION LEGEND

CLI Class

- 1 - No significant limitation
- 2 - Slight limitations
- 3 - Moderate limitations
- 4 - Severe limitations
- 5 - Very severe limitations
- 6 - Production is not feasible
- 7 - No capability

Limitations

- B - brush/tree cover
- C - climate
- D - low permeability
- E - erosion damage
- F - poor fertility
- G - Steep slopes
- H - temperature
- I - flooding
- J - field size/shape
- K - shallow profile development
- M - low moisture holding, adverse texture
- N - high salinity
- P - excessive surface stoniness
- R - shallowness to bedrock
- S - high solidity
- T - adverse topography
- U - prior earth moving
- V - high acid content
- W - excessive wetness/poor drainage
- X - deep organic deposit
- Y - slowly permeable
- Z - relatively impermeable

Division: 3
Roll: 06707002
File: PL20220063
Printed: April 28, 2022
Legal: Lot:3 Block:1
Plan:1110255 within NW-07-26-03-W05M



Landowner Circulation Area

Redesignation Proposal

To redesignate the subject lands from Agricultural, Small Parcel District (A-SML p12.1) to Agricultural, Small Parcel District (A-SML p8.1) to accommodate future subdivision.

Legend

Support

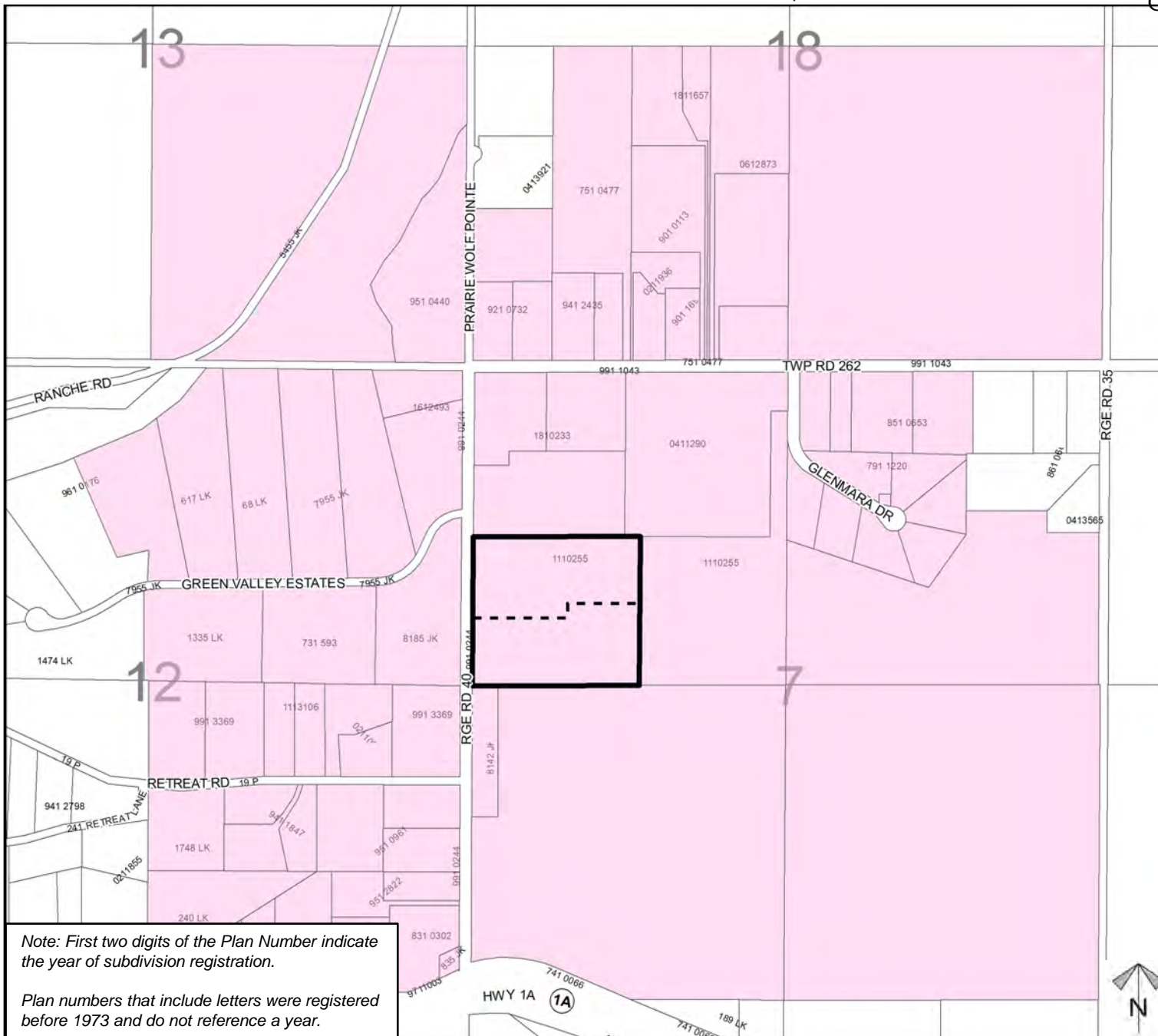


Not Support



Note: First two digits of the Plan Number indicate the year of subdivision registration.

Plan numbers that include letters were registered before 1973 and do not reference a year.



Division: 3
Roll: 06707002
File: PL20220063
Printed: April 28, 2022
Legal: Lot:3 Block:1
Plan:1110255 within NW-07-26-03-W05M