

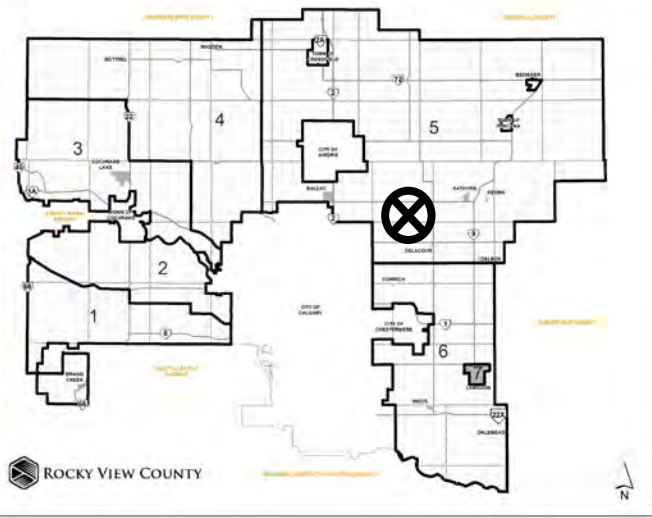


## Location & Context

### Redesignation Proposal

To redesignate the subject lands from Agricultural, General District (A-GEN) to Agricultural, Small Parcel District (A-SML p16.1) in order to facilitate future subdivision.

Division: 5  
Roll: 06302002  
File: PL20220001  
Printed: Jan 17, 2022  
Legal: A portion of SW-02-26-28-W04M







## Development Proposal

### Redesignation Proposal

To redesignate the subject lands from Agricultural, General District (A-GEN) to Agricultural, Small Parcel District (A-SML p16.1) in order to facilitate future subdivision.

± 64.75 ha  
(± 160.00 ac)



Division: 5  
Roll: 06302002  
File: PL20220001  
Printed: Jan 17, 2022  
Legal: A portion of SW-02-26-28-W04M



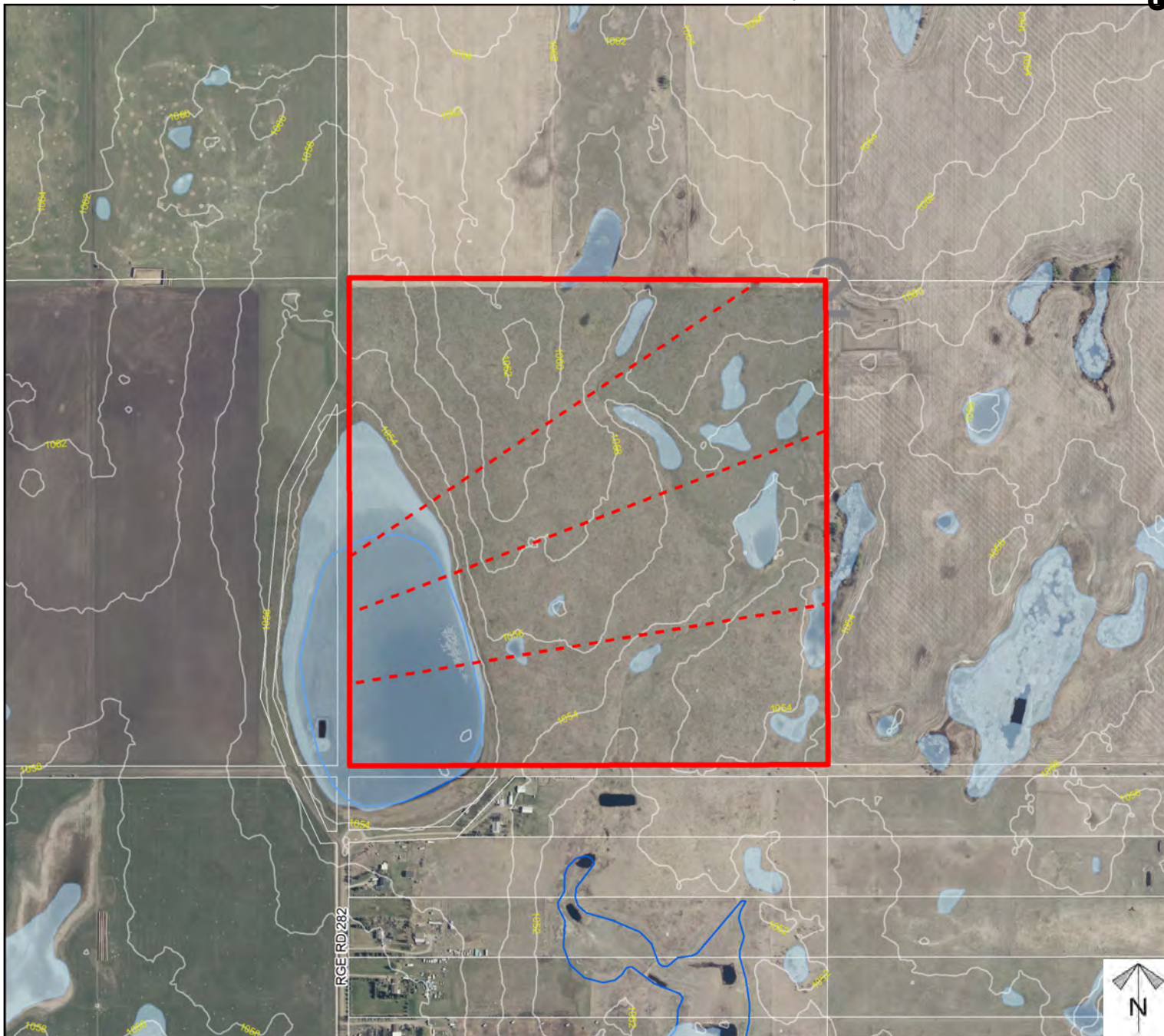
## Environmental

### Redesignation Proposal

To redesignate the subject lands from Agricultural, General District (A-GEN) to Agricultural, Small Parcel District (A-SML p16.1) in order to facilitate future subdivision.

-  Subject Lands
-  Contour - 2 meters
-  Riparian Setbacks
-  Alberta Wetland Inventory
-  Surface Water

Division: 5  
 Roll: 06302002  
 File: PL20220001  
 Printed: Jan 17, 2022  
 Legal: A portion of SW-02-  
 26-28-W04M

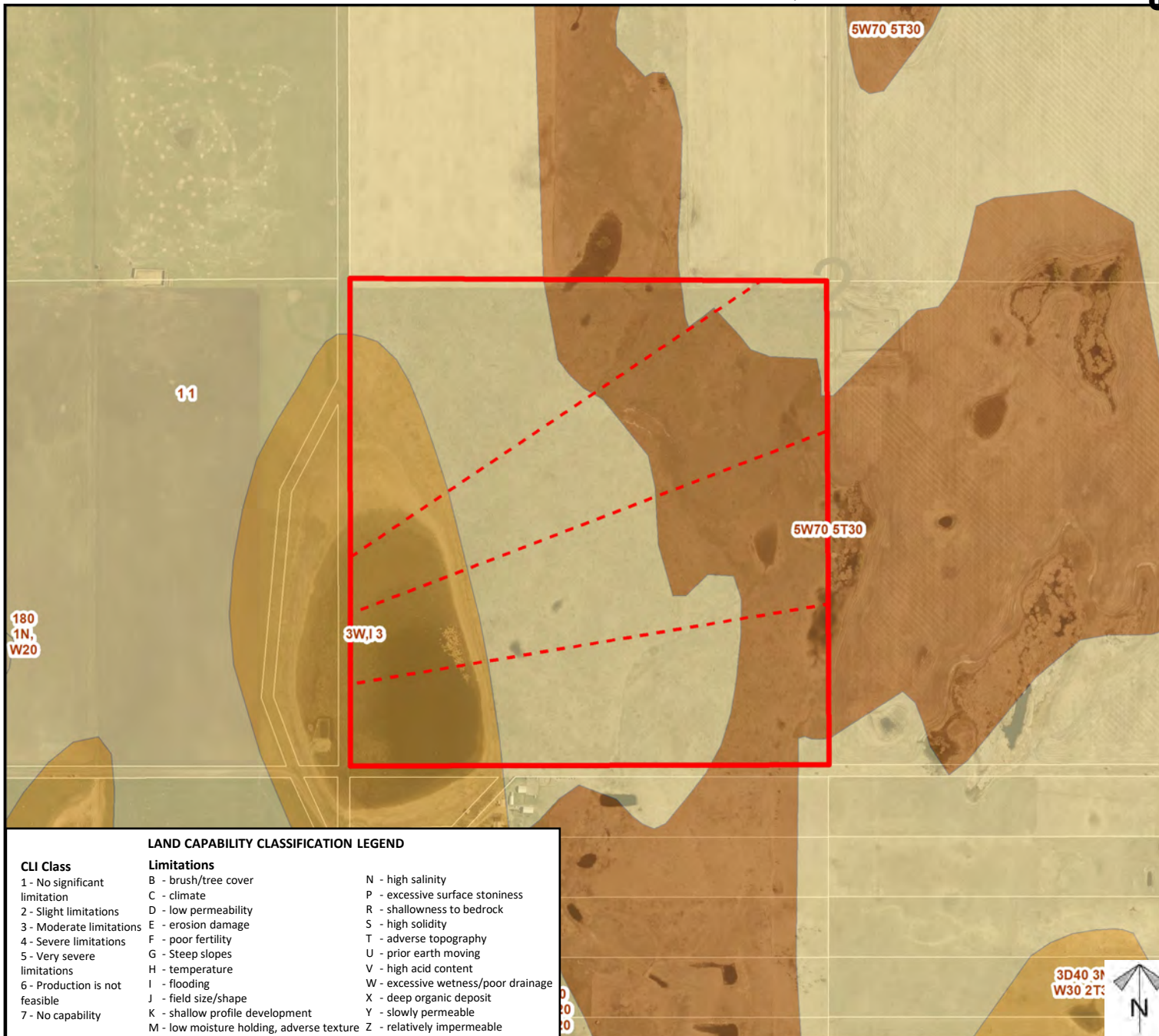




## Soil Classifications

### Redesignation Proposal

To redesignate the subject lands from Agricultural, General District (A-GEN) to Agricultural, Small Parcel District (A-SML p16.1) in order to facilitate future subdivision.



Division: 5  
 Roll: 06302002  
 File: PL20220001  
 Printed: Jan 17, 2022  
 Legal: A portion of SW-02-26-28-W04M



## Landowner Circulation Area

### Redesignation Proposal

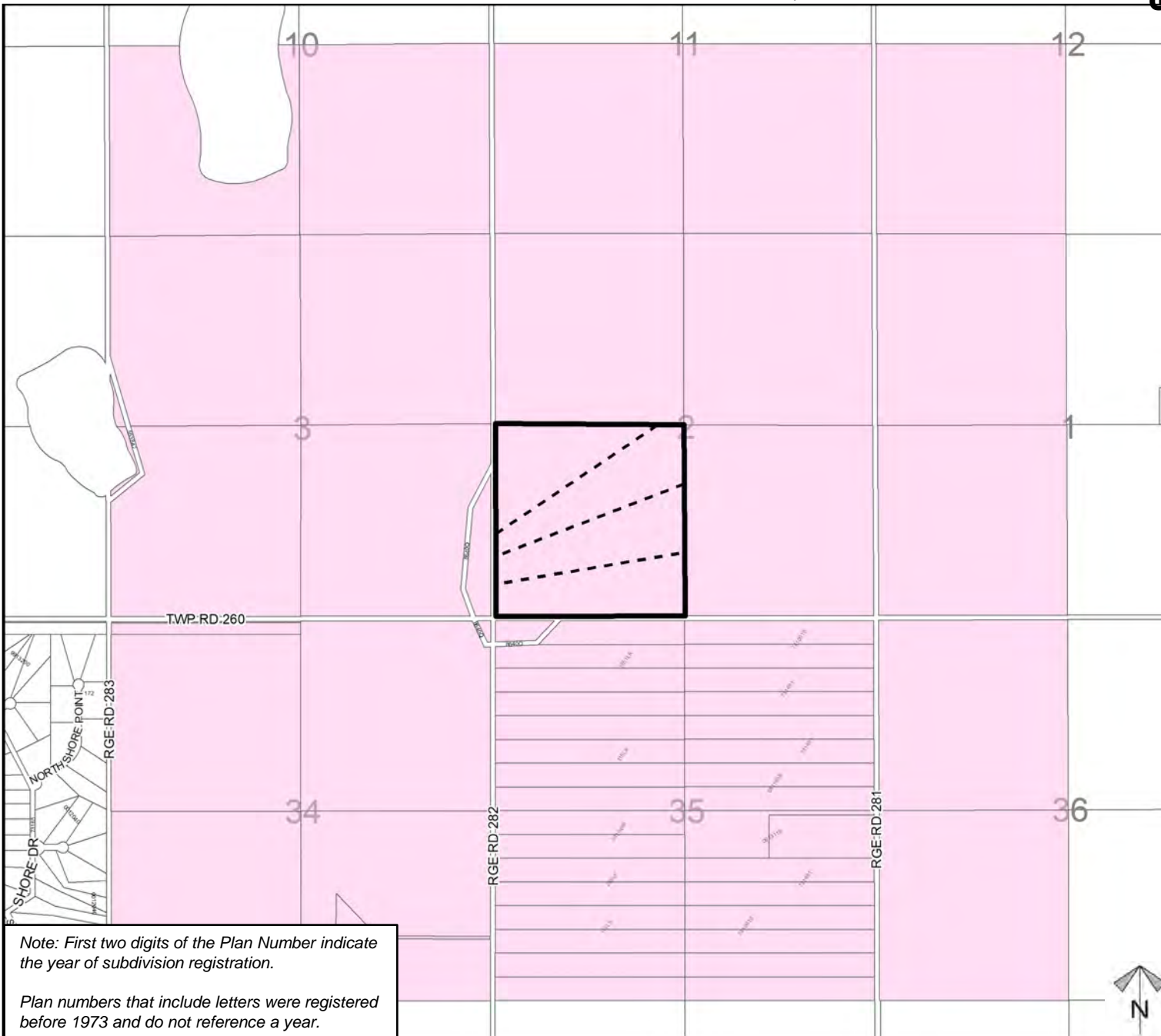
To redesignate the subject lands from Agricultural, General District (A-GEN) to Agricultural, Small Parcel District (A-SML p16.1) in order to facilitate future subdivision.

### Legend

Support



Not Support



Note: First two digits of the Plan Number indicate the year of subdivision registration.

Plan numbers that include letters were registered before 1973 and do not reference a year.

Division: 5  
Roll: 06302002  
File: PL20220001  
Printed: Jan 17, 2022  
Legal: A portion of SW-02-26-28-W04M