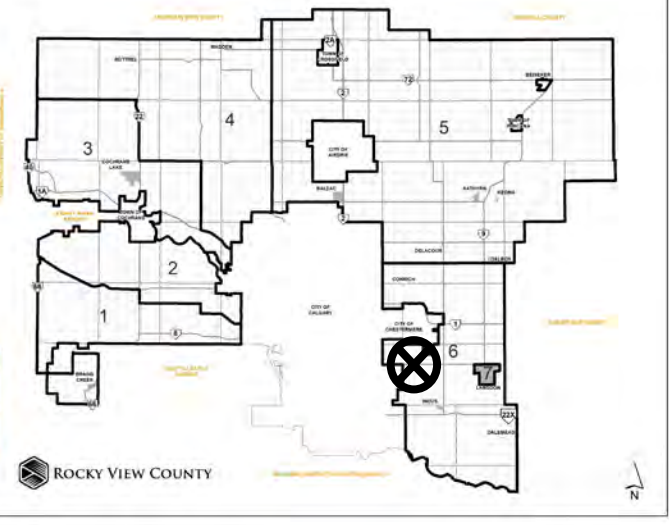




## Location & Context

### Redesignation Proposal

To redesignate the subject lands from Direct Control District 146 (DC-146) to Industrial, Light District (I-LHT).



Division: 6  
Roll: 03321013  
File: PL20210200  
Printed: Dec 8, 2021  
Legal: Lot:2 Block:2  
Plan:1511781 within NE-21-23-28-W04M





## Development Proposal

### Redesignation Proposal

To redesignate the subject lands from Direct Control District 146 (DC-146) to Industrial, Light District (I-LHT).

± 6.11 hectares  
(±15.09 acres)

NORMAN PLACE



Division: 6  
Roll: 03321013  
File: PL20210200  
Printed: Dec 8, 2021  
Legal: Lot:2 Block:2  
Plan:1511781 within NE-21-  
23-28-W04M

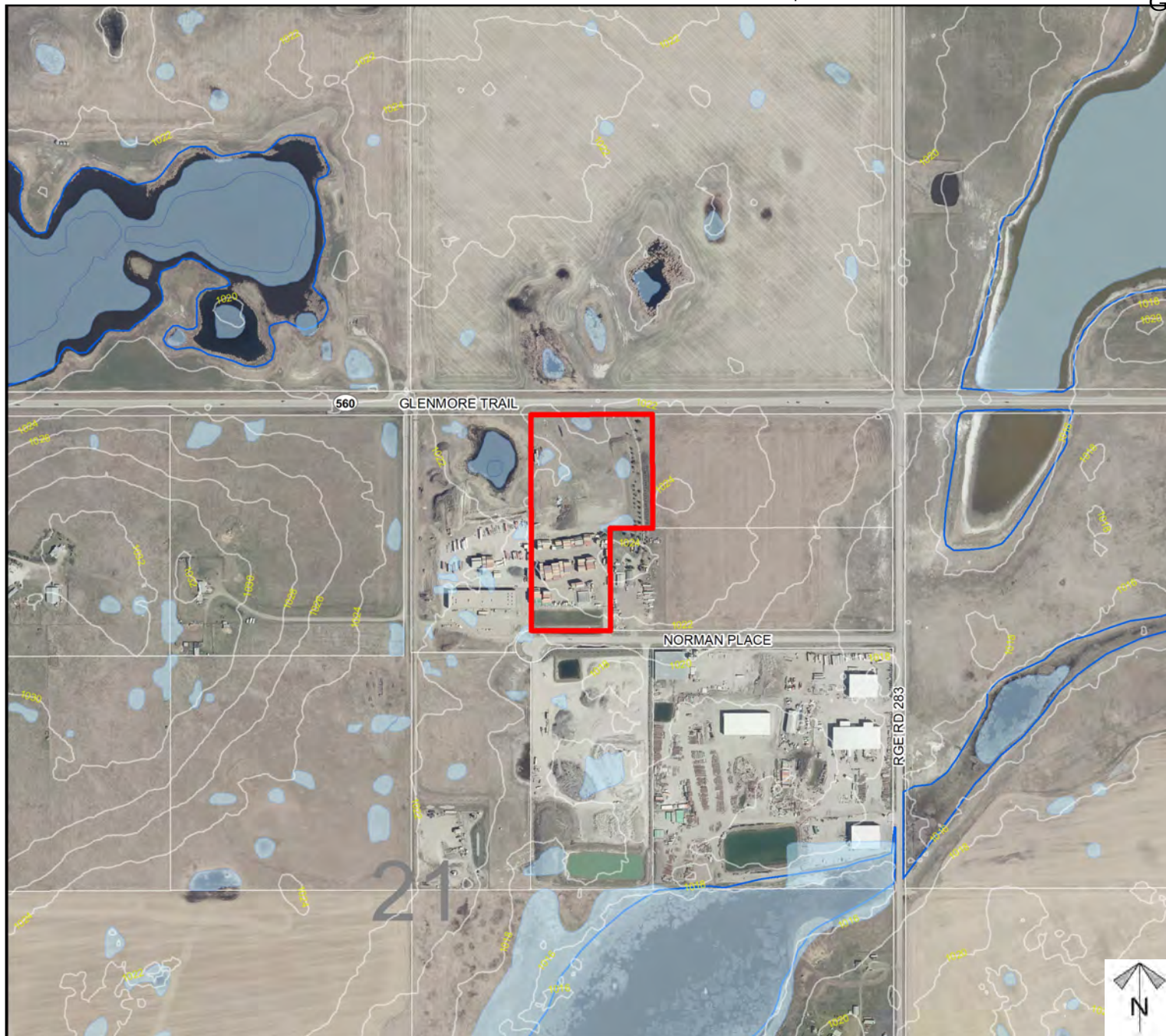




## Environmental

### Redesignation Proposal

To redesignate the subject lands from Direct Control District 146 (DC-146) to Industrial, Light District (I-LHT).



- Subject Lands
- Contour - 2 meters
- Riparian Setbacks
- Alberta Wetland Inventory
- Surface Water

Division: 6  
 Roll: 03321013  
 File: PL20210200  
 Printed: Dec 8, 2021  
 Legal: Lot:2 Block:2  
 Plan:1511781 within NE-21-23-28-W04M



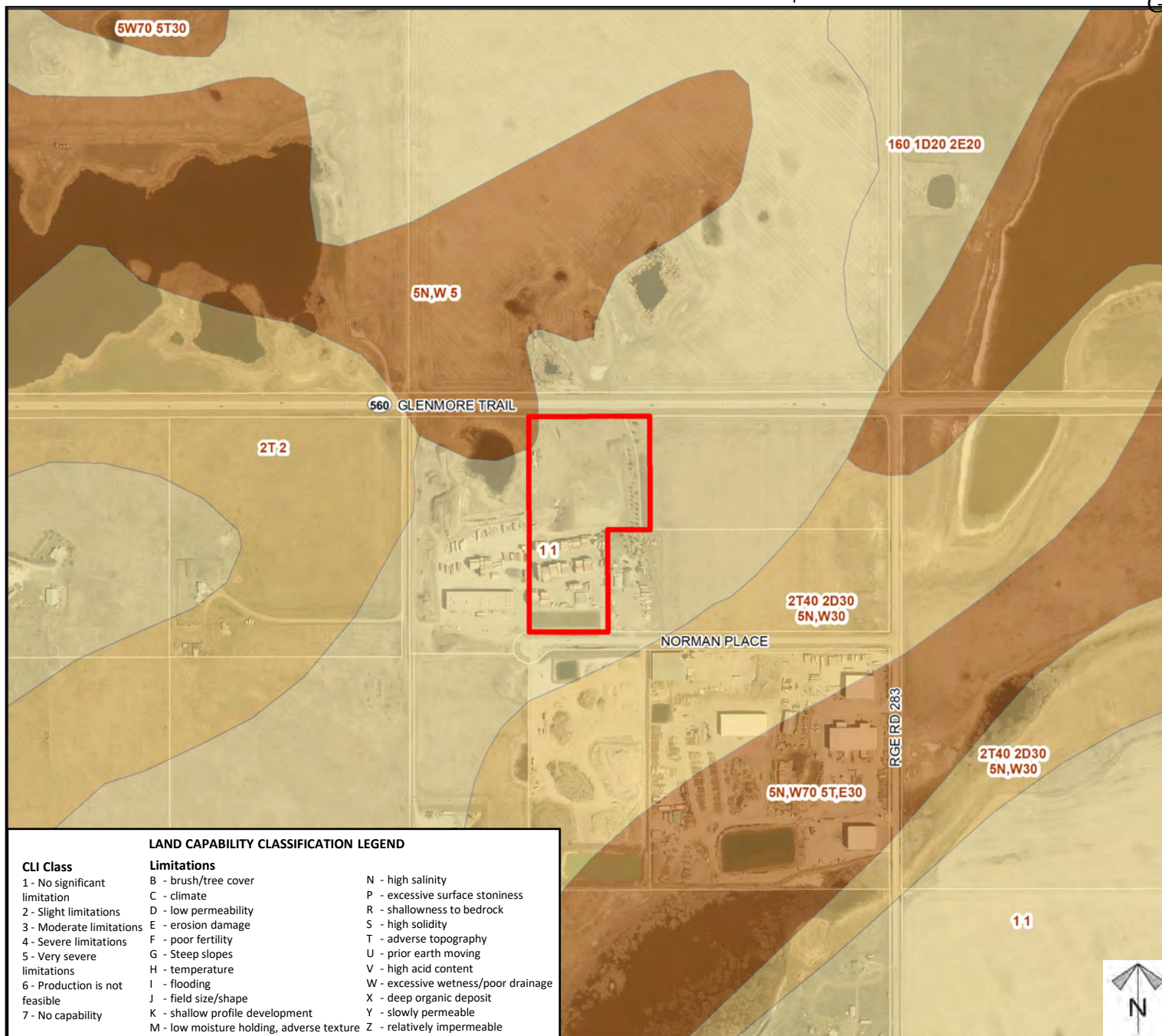




## Soil Classifications

### Redesignation Proposal

To redesignate the subject lands from Direct Control District 146 (DC-146) to Industrial, Light District (I-LHT).



#### LAND CAPABILITY CLASSIFICATION LEGEND

##### CLI Class

- 1 - No significant limitation
- 2 - Slight limitations
- 3 - Moderate limitations
- 4 - Severe limitations
- 5 - Very severe limitations
- 6 - Production is not feasible
- 7 - No capability

##### Limitations

- B - brush/tree cover
- C - climate
- D - low permeability
- E - erosion damage
- F - poor fertility
- G - Steep slopes
- H - temperature
- I - flooding
- J - field size/shape
- K - shallow profile development
- M - low moisture holding, adverse texture
- N - high salinity
- P - excessive surface stoniness
- R - shallowness to bedrock
- S - high solidity
- T - adverse topography
- U - prior earth moving
- V - high acid content
- W - excessive wetness/poor drainage
- X - deep organic deposit
- Y - slowly permeable
- Z - relatively impermeable

Division: 6  
Roll: 03321013  
File: PL20210200  
Printed: Dec 8, 2021  
Legal: Lot:2 Block:2  
Plan:1511781 within NE-21-23-28-W04M



**Landowner  
Circulation  
Area**

## Redesignation Proposal

To redesignate the subject lands from Direct Control District 146 (DC-146) to Industrial, Light District (I-LHT).

### Legend

## Support



*Not Support*



Division: 6  
Roll: 03321013  
File: PL20210200  
Printed: Dec 8, 2021  
Legal: Lot:2 Block:2  
Plan:1511781 within NE-21-  
23-28-W04M

