



Location & Context

Redesignation & Conceptual Scheme Proposal

To redesignate a portion of the subject lands from Agricultural, General District (A-GEN) and Residential, Rural District (R-RUR) to Industrial, Heavy District (I-HVY) in order to facilitate the creation of a 15 new lots with lot sizes between ± 6.76 hectares (± 16.69 acres) and ± 8.14 hectares (± 20.12 acres). And, to redesignate a portion of the subject lands from Agricultural, General District Residential and Rural District (R-RUR) to Special, Public Service District (S-PUB) in order to facilitate the creation of 2 new lots between ± 0.20 hectares (± 0.50 acres) and ± 8.10 hectares (± 20.0 acres).

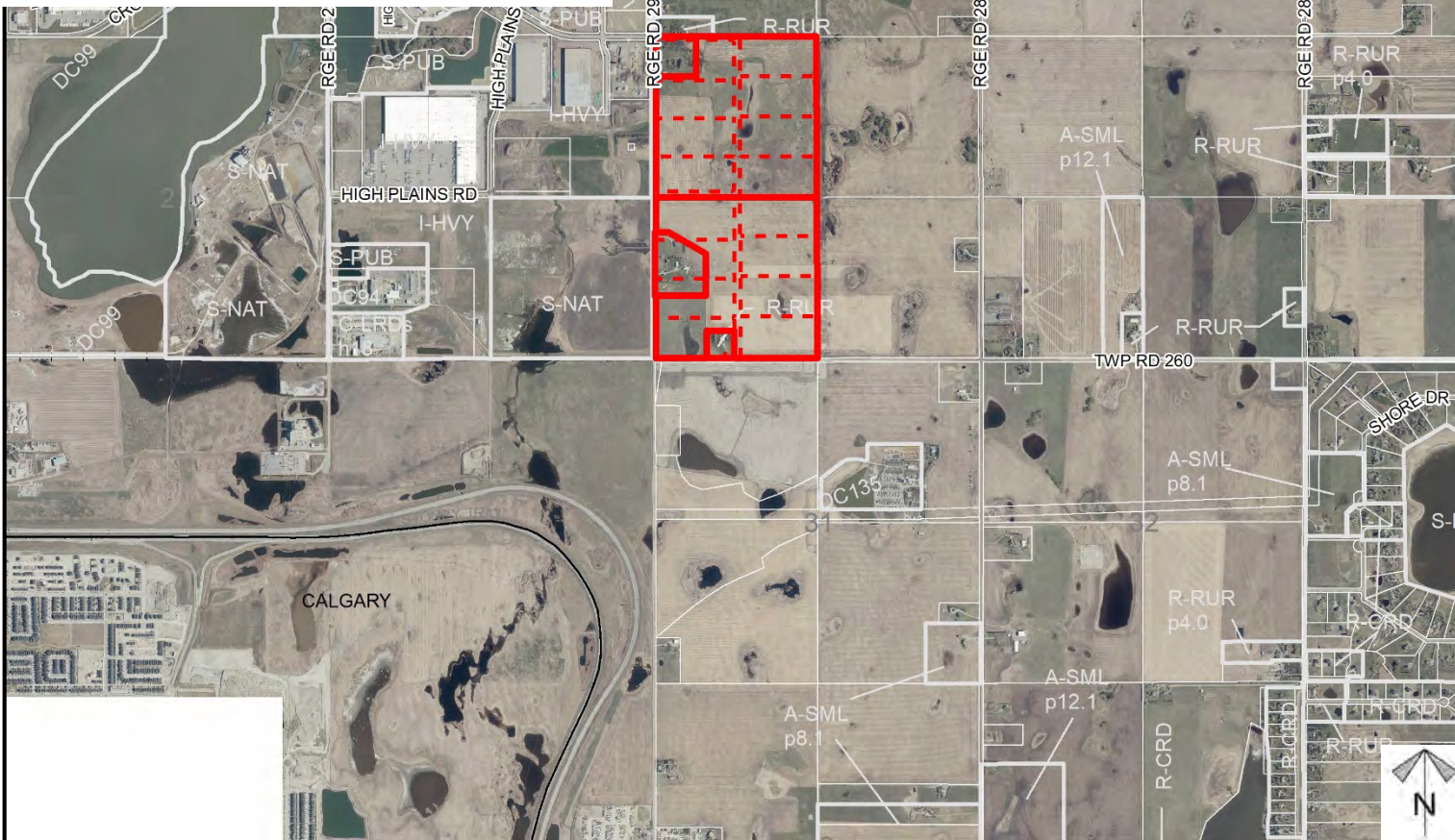
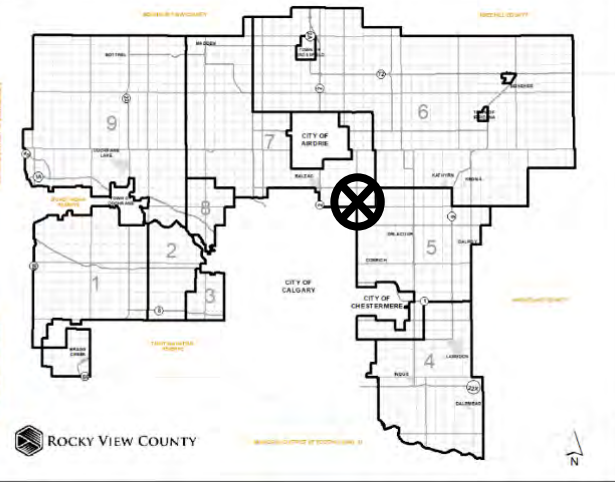
Division: 5

Roll: 06306002/3/5/7/8

File: PL20210095/96

Printed: May 26, 2021

*Legal: NW/SW-06-26-28-
W04M*





Development Proposal

Redesignation & Conceptual Scheme Proposal

To redesignate a portion of the subject lands from Agricultural, General District (A-GEN) and Residential, Rural District (R-RUR) to Industrial, Heavy District (I-HVY) in order to facilitate the creation of a 15 new lots with lot sizes between ± 6.76 hectares (± 16.69 acres) and ± 8.14 hectares (± 20.12 acres). And, to redesignate a portion of the subject lands from Agricultural, General District Residential and Rural District (R-RUR) to Special, Public Service District (S-PUB) in order to facilitate the creation of 2 new lots between ± 0.20 hectares (± 0.50 acres) and ± 8.10 hectares (± 20.0 acres).

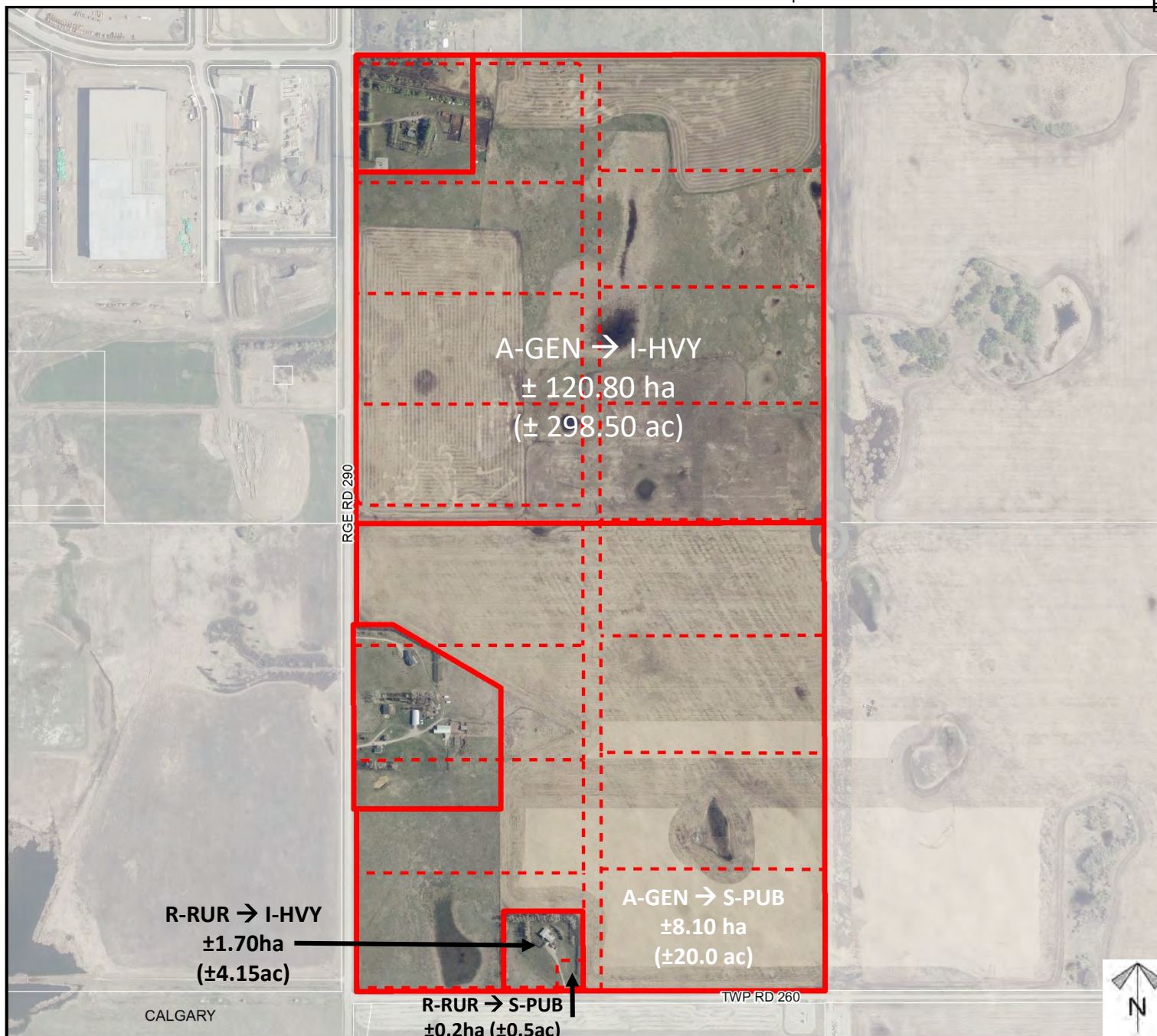
Division: 5

Roll: 06306002/3/5/7/8

File: PL20210095/96

Printed: May 26, 2021

Legal: NW/SW-06-26-28-
W04M





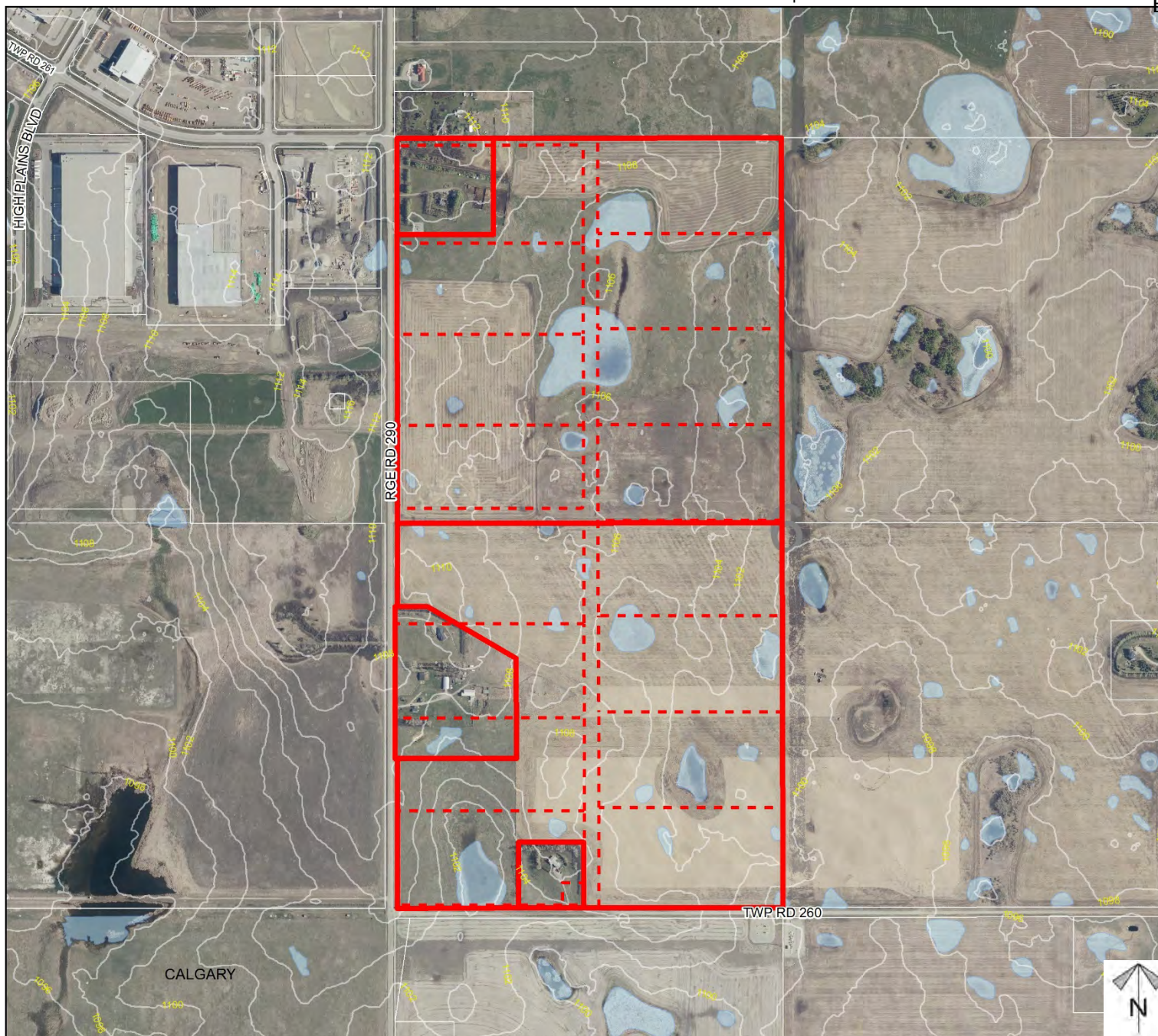
Environmental

Redesignation & Conceptual Scheme Proposal

To redesignate a portion of the subject lands from Agricultural, General District (A-GEN) and Residential, Rural District (R-RUR) to Industrial, Heavy District (I-HVY) in order to facilitate the creation of a 15 new lots with lot sizes between ± 6.76 hectares (± 16.69 acres) and ± 8.14 hectares (± 20.12 acres). And, to redesignate a portion of the subject lands from Agricultural, General District Residential and Rural District (R-RUR) to Special, Public Service District (S-PUB) in order to facilitate the creation of 2 new lots between ± 0.20 hectares (± 0.50 acres) and ± 8.10 hectares (± 20.0 acres).

-  Subject Lands
-  Contour - 2 meters
-  Riparian Setbacks
-  Alberta Wetland Inventory
-  Surface Water

Division: 5
Roll: 06306002/3/5/7/8
File: PL20210095/96
Printed: May 26, 2021
Legal: NW/SW-06-26-28-
W04M





Soil Classifications

Redesignation & Conceptual Scheme Proposal

To redesignate a portion of the subject lands from Agricultural, General District (A-GEN) and Residential, Rural District (R-RUR) to Industrial, Heavy District (I-HVY) in order to facilitate the creation of a 15 new lots with lot sizes between ± 6.76 hectares (± 16.69 acres) and ± 8.14 hectares (± 20.12 acres). And, to redesignate a portion of the subject lands from Agricultural, General District Residential and Rural District (R-RUR) to Special, Public Service District (S-PUB) in order to facilitate the creation of 2 new lots between ± 0.20 hectares (± 0.50 acres) and ± 8.10 hectares (± 20.0 acres).

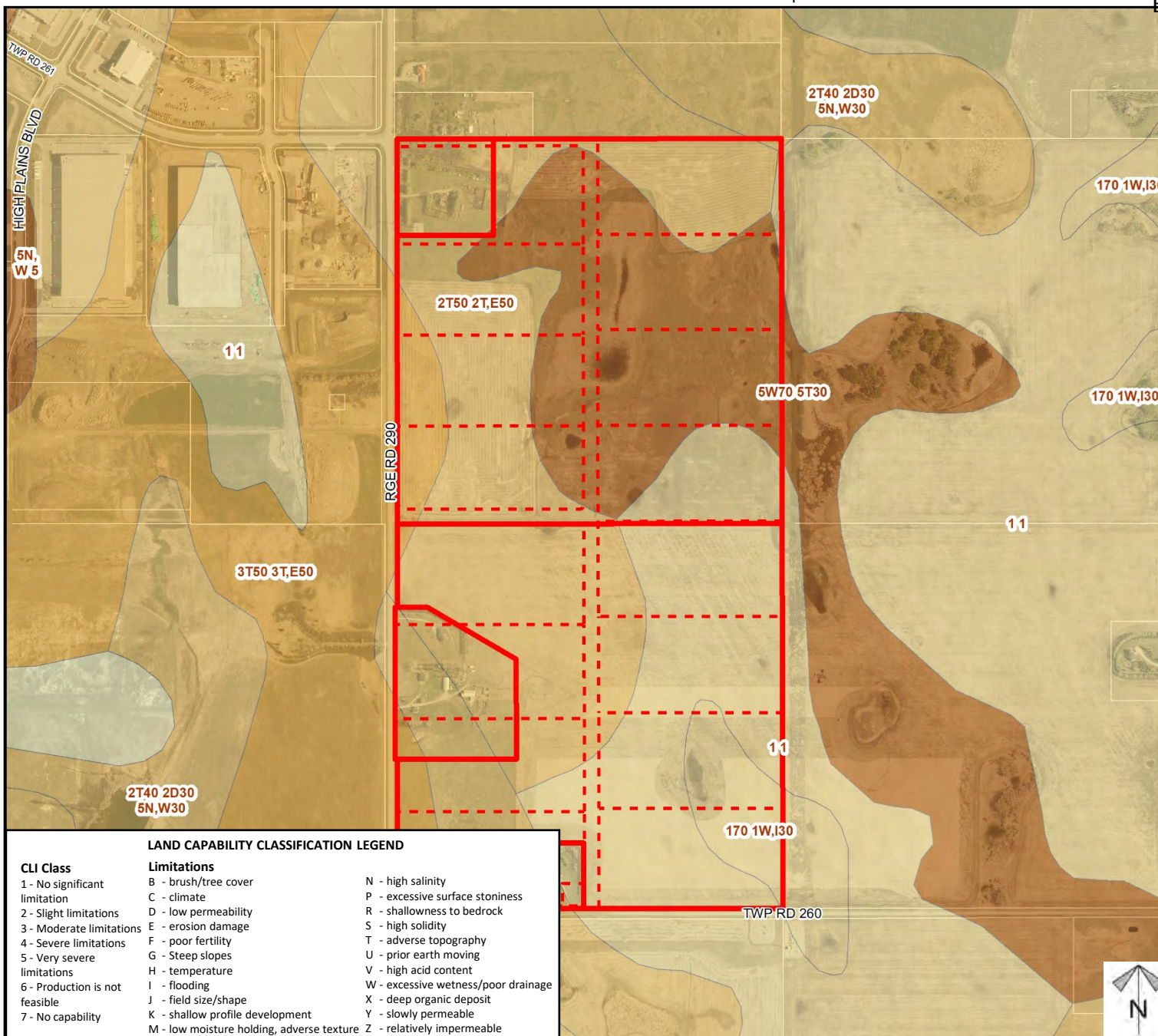
Division: 5

Roll: 06306002/3/5/7/8

File: PL20210095/96

Printed: May 26, 2021

Legal: NW/SW-06-26-28-
W04M





Landowner Circulation Area

Redesignation & Conceptual Scheme Proposal

To redesignate a portion of the subject lands from Agricultural, General District (A-GEN) and Residential, Rural District (R-RUR) to Industrial, Heavy District (I-HVY) in order to facilitate the creation of a 15 new lots with lot sizes between ± 6.76 hectares (± 16.69 acres) and ± 8.14 hectares (± 20.12 acres).

And, to redesignate a portion of the subject lands from Agricultural, General District Residential and Rural District (R-RUR) to Special, Public Service District (S-PUB) in order to facilitate the creation of 2 new lots between ± 0.20 hectares (± 0.50 acres) and ± 8.10 hectares (± 20.0 acres).

Legend

Support



Not Support



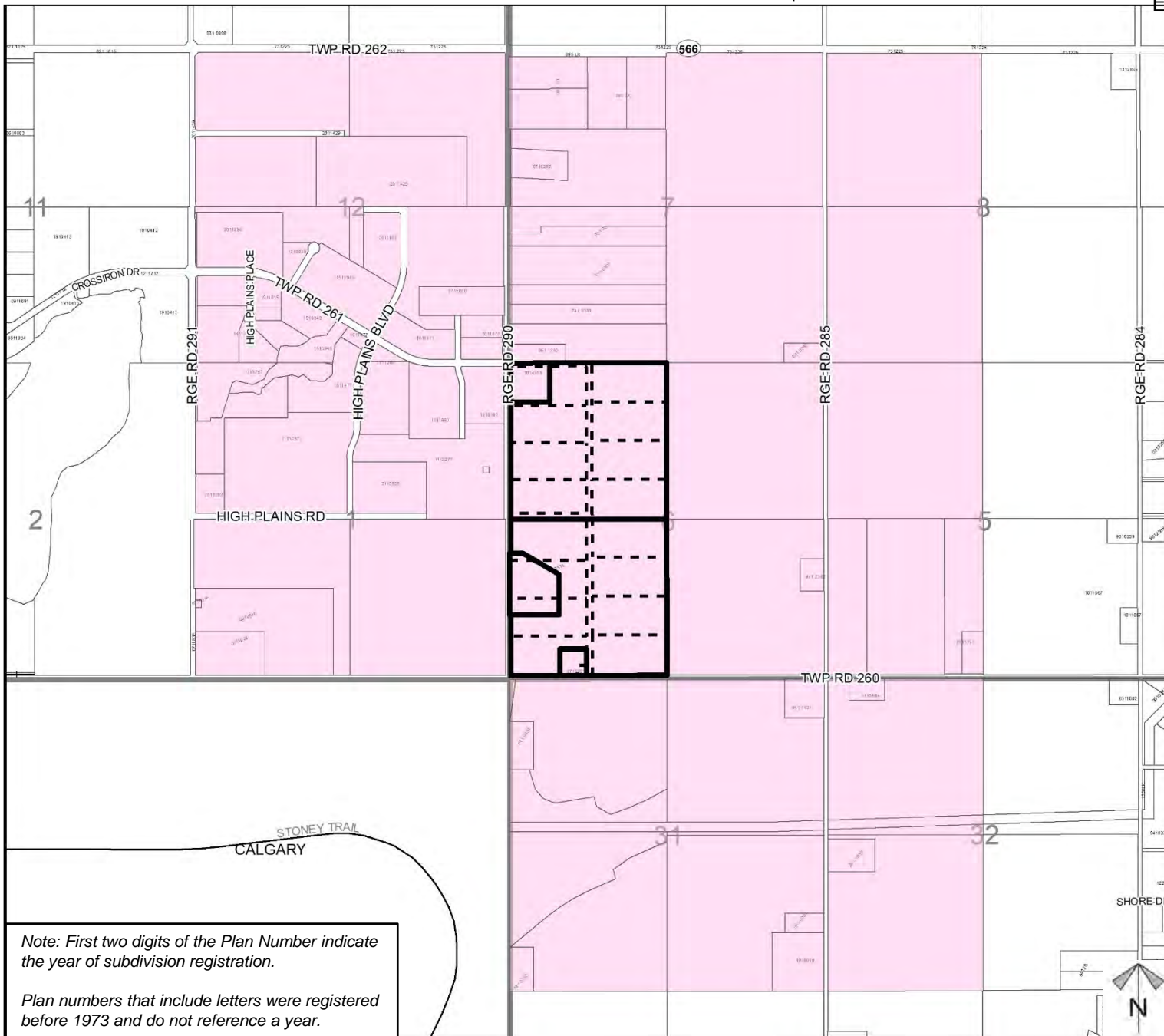
Division: 5

Roll: 06306002/3/5/7/8

File: PL20210095/96

Printed: May 26, 2021

Legal: NW/SW-06-26-28-
W04M



Note: First two digits of the Plan Number indicate the year of subdivision registration.

Plan numbers that include letters were registered before 1973 and do not reference a year.