

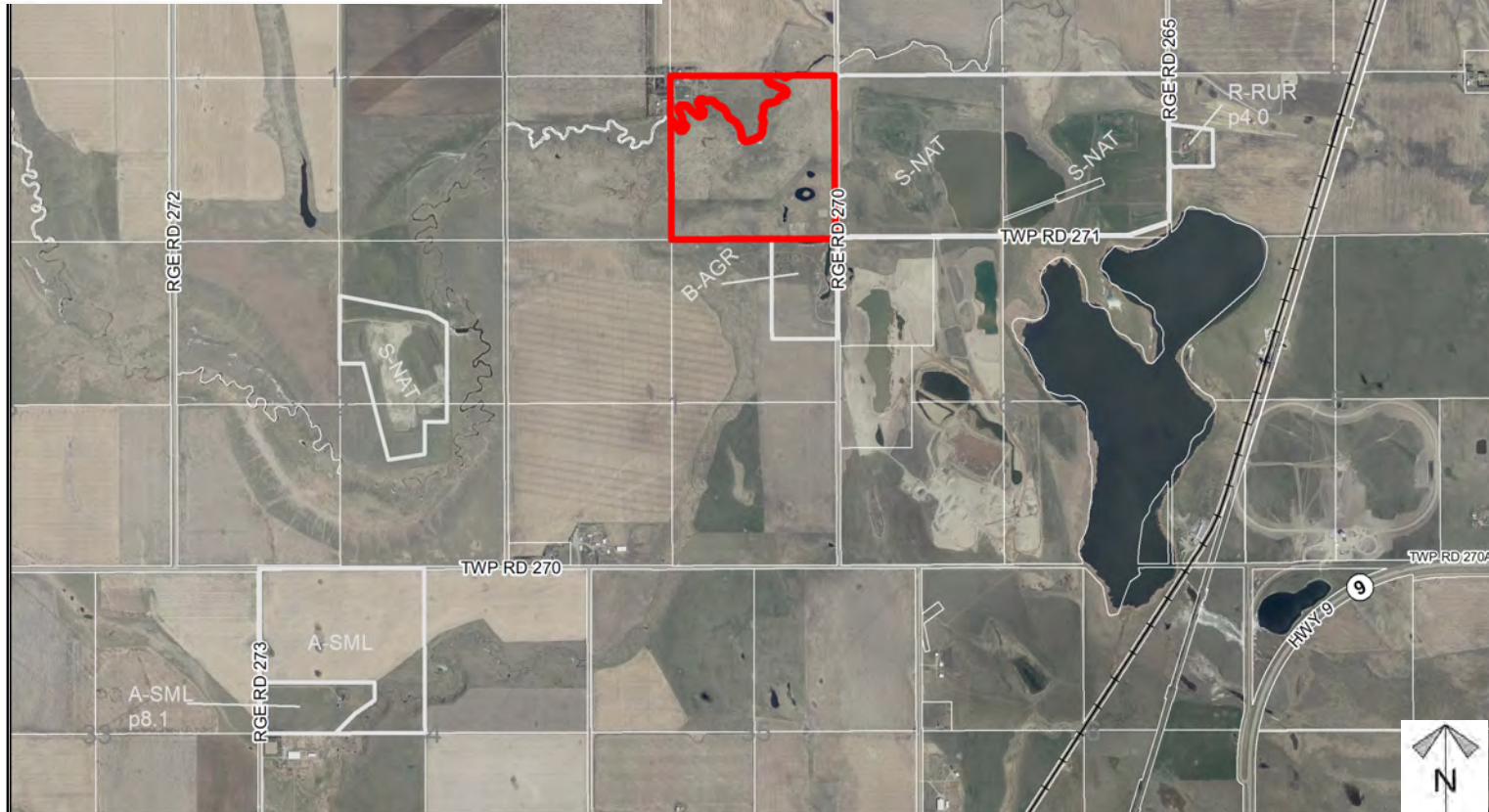
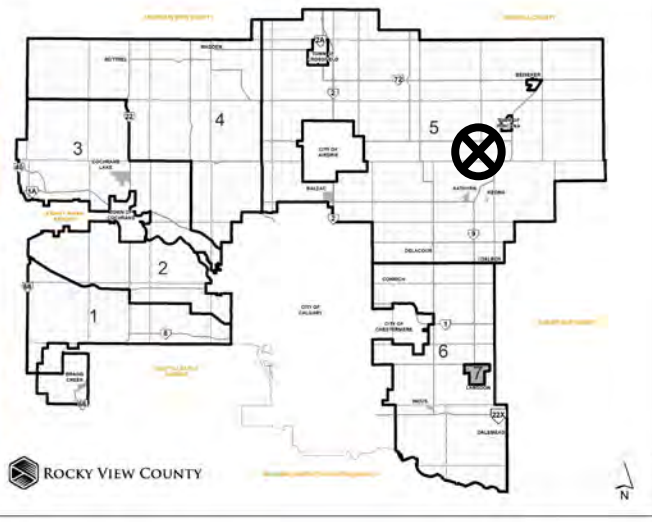
## Location & Context

### Redesignation and Master Site Development Plan Proposal

PL20210207  
 A Master Site Development Plan, Roe Gravel Pit, to facilitate gravel pit operation within a  $\pm 19.32\text{ha}$  ( $\pm 47.75$  acre) portion of SE-12-27-27-W04M.

PL20210208  
 Redesignation of  $\pm 19.32\text{ha}$  ( $\pm 47.75$  acre) from Agricultural, General District (A-GEN) to Direct Control District to accommodate gravel pit operations.

Division: 5  
 Roll: 07212001  
 File: PL20210208  
 Printed: February 14, 2022  
 Legal: A portion of SE-12-27-27-W04M





## Location & Context

### Redesignation and Master Site Development Plan Proposal

PL20210207  
A Master Site Development Plan, Roe Gravel Pit, to facilitate gravel pit operation within a  $\pm 19.32\text{ha}$  ( $\pm 47.75$  acre) portion of SE-12-27-27-W04M.

PL20210208  
Redesignation of  $\pm 19.32\text{ha}$  ( $\pm 47.75$  acre) from Agricultural, General District (A-GEN) to Direct Control District to accommodate gravel pit operations.



#### LEGEND:

- LAND USE AREA (47.75 ACRES)
- MAXIMUM PLANNED PIT SIZE\* (46.05 ACRES)
- \* 3M UNDISTURBED MINING BUFFER WILL BE UTILIZED ON ALL SIDES
- BURNCO - IRRICANA 1, 2 & 3

**BURNCO** Rock Products Ltd

ROE GRAVEL PIT  
LAND USE MAP  
SE 12-27-27 W4M

DATE DRAWN: NOV. 2021	SCALE: 1:20,000	DRAWN BY: TT	DWG. NO. 2
DATE SUBMITTED: NOV. 2021		CHECKED BY: TC	

Division: 5  
Roll: 07212001  
File: PL20210208  
Printed: February 14, 2022  
Legal: A portion of SE-12-27-27-W04M





## Development Proposal

### Redesignation and Master Site Development Plan Proposal

PL20210207

A Master Site Development Plan, Roe Gravel Pit, to facilitate gravel pit operation within a  $\pm 19.32\text{ha}$  ( $\pm 47.75$  acre) portion of SE-12-27-27-W04M.

PL20210208

Redesignation of  $\pm 19.32\text{ha}$  ( $\pm 47.75$  acre) from Agricultural, General District (A-GEN) to Direct Control District to accommodate gravel pit operations.

A-GEN  $\rightarrow$  Direct Control  
 $\pm 19.32$  ha ( $\pm 47.75$  ac)

RGE RD 270



Division: 5

Roll: 07212001

File: PL20210208

Printed: February 14, 2022

Legal: A portion of SE-12-27-27-W04M





## Environmental

### Redesignation and Master Site Development Plan Proposal

PL20210207

A Master Site Development Plan, Roe Gravel Pit, to facilitate gravel pit operation within a  $\pm 19.32\text{ha}$  ( $\pm 47.75$  acre) portion of SE-12-27-27-W04M.

PL20210208

Redesignation of  $\pm 19.32\text{ha}$  ( $\pm 47.75$  acre) from Agricultural General

-  Subject Lands
-  Contour - 2 meters
-  Riparian Setbacks
-  Alberta Wetland Inventory
-  Surface Water

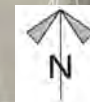
Division: 5

Roll: 07212001

File: PL20210208

Printed: February 14, 2022

Legal: A portion of SE-12-27-27-W04M





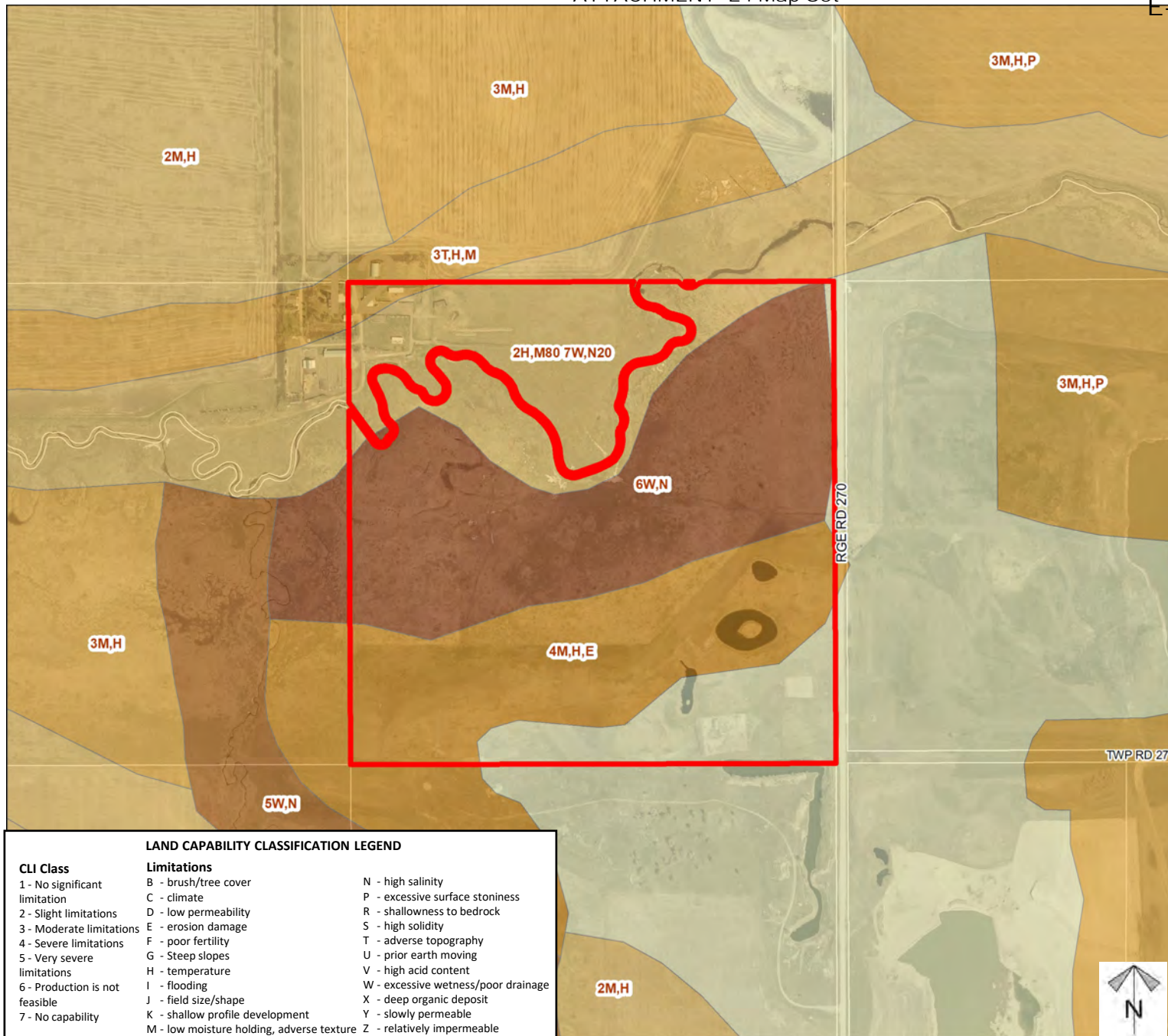


## Soil Classifications

### Redesignation and Master Site Development Plan Proposal

PL20210207  
A Master Site Development Plan, Roe Gravel Pit, to facilitate gravel pit operation within a  $\pm 19.32$ ha ( $\pm 47.75$  acre) portion of SE-12-27-27-W04M.

PL20210208  
Redesignation of  $\pm 19.32$ ha ( $\pm 47.75$  acre) from Agricultural, General District (A-GEN) to Direct Control District to accommodate gravel pit operations.



#### LAND CAPABILITY CLASSIFICATION LEGEND

CLI Class	Limitations	
1 - No significant limitation	B - brush/tree cover	N - high salinity
2 - Slight limitations	C - climate	P - excessive surface stoniness
3 - Moderate limitations	D - low permeability	R - shallowness to bedrock
4 - Severe limitations	E - erosion damage	S - high solidity
5 - Very severe limitations	F - poor fertility	T - adverse topography
6 - Production is not feasible	G - Steep slopes	U - prior earth moving
7 - No capability	H - temperature	V - high acid content
	I - flooding	W - excessive wetness/poor drainage
	J - field size/shape	X - deep organic deposit
	K - shallow profile development	Y - slowly permeable
	M - low moisture holding, adverse texture	Z - relatively impermeable

Division: 5

Roll: 07212001

File: PL20210208

Printed: February 14, 2022

Legal: A portion of SE-12-27-27-W04M



## Landowner Circulation Area

### Redesignation and Master Site Development Plan Proposal

PL20210207

A Master Site Development Plan, Roe Gravel Pit, to facilitate gravel pit operation within a  $\pm 19.32\text{ha}$  ( $\pm 47.75$  acre) portion of SE-12-27-27-W04M.

PL20210208

Redesignation of  $\pm 19.32\text{ha}$  ( $\pm 47.75$  acre) from Agricultural, General District (A-GEN) to Direct Control District to accommodate gravel pit operations.

#### Legend

Support



Not Support



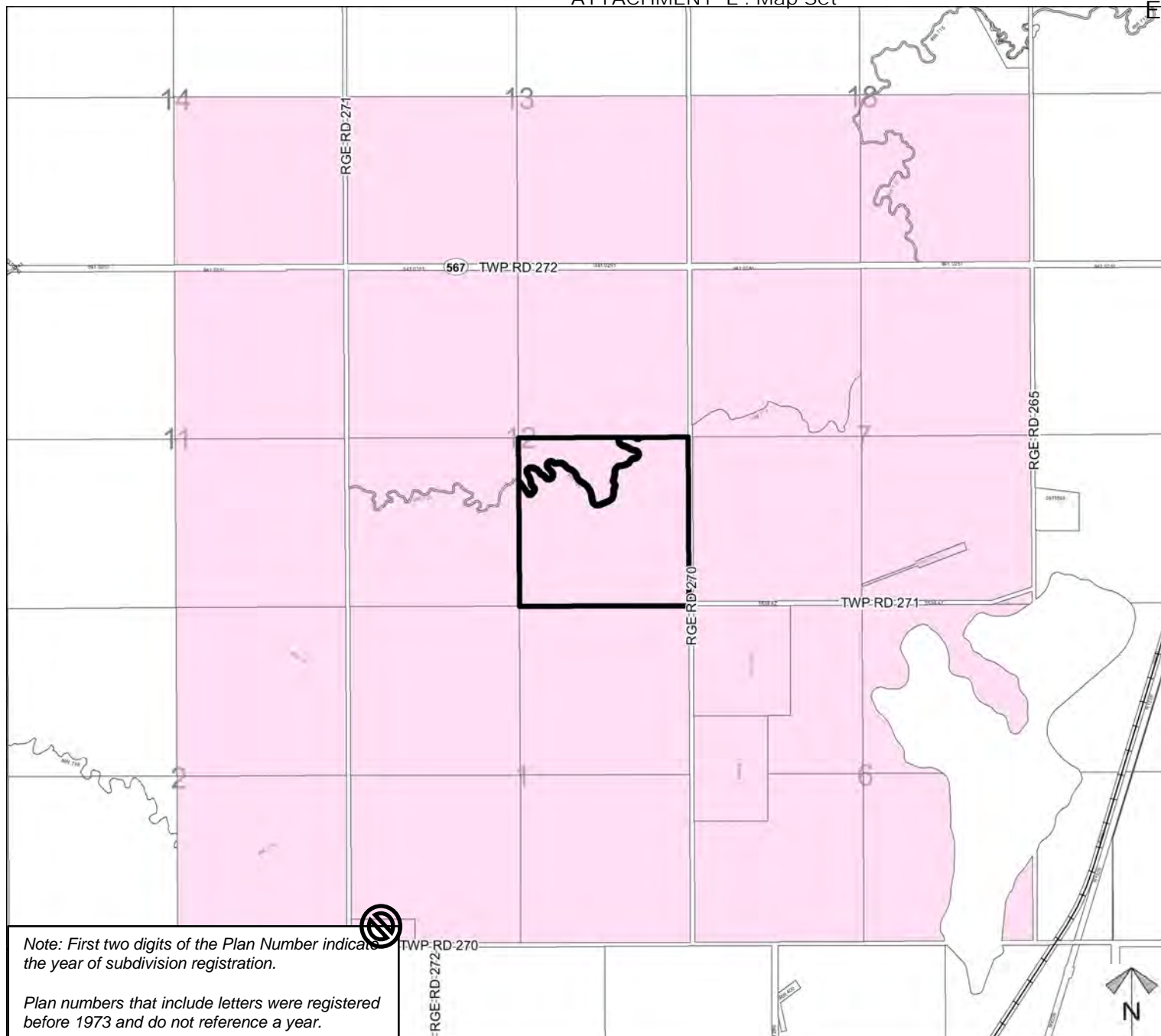
Division: 5

Roll: 07212001

File: PL20210208

Printed: February 14, 2022

Legal: A portion of SE-12-27-27-W04M



Note: First two digits of the Plan Number indicate the year of subdivision registration.

Plan numbers that include letters were registered before 1973 and do not reference a year.