

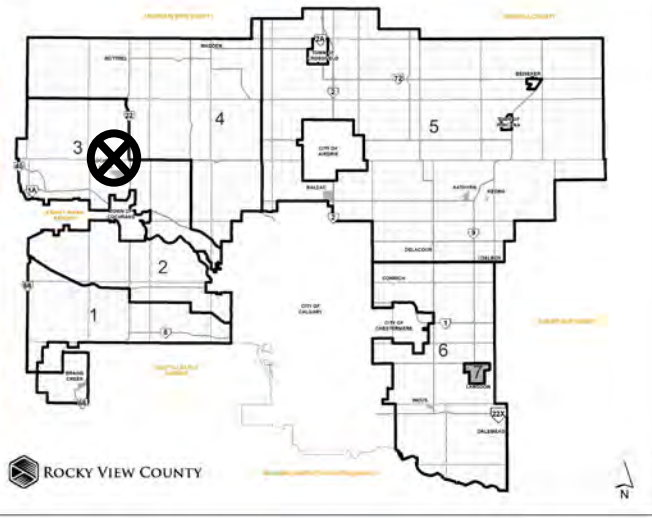


## Location & Context

### Redesignation Proposal

To redesignate a  $\pm 8.10$  ha ( $\pm 20.01$  ac) portion on the northeastern side of the subject lands from Agricultural, General District (A-GEN) to Agricultural, Small Parcel District (A-SML p8.1) to accommodate a future subdivision.

Division: 3  
Roll: 07804003  
File: PL20220059  
Printed: April 14, 2022  
Legal: Lot:1 Block:2  
Plan:1213104 within SE-04-27-04-W05M



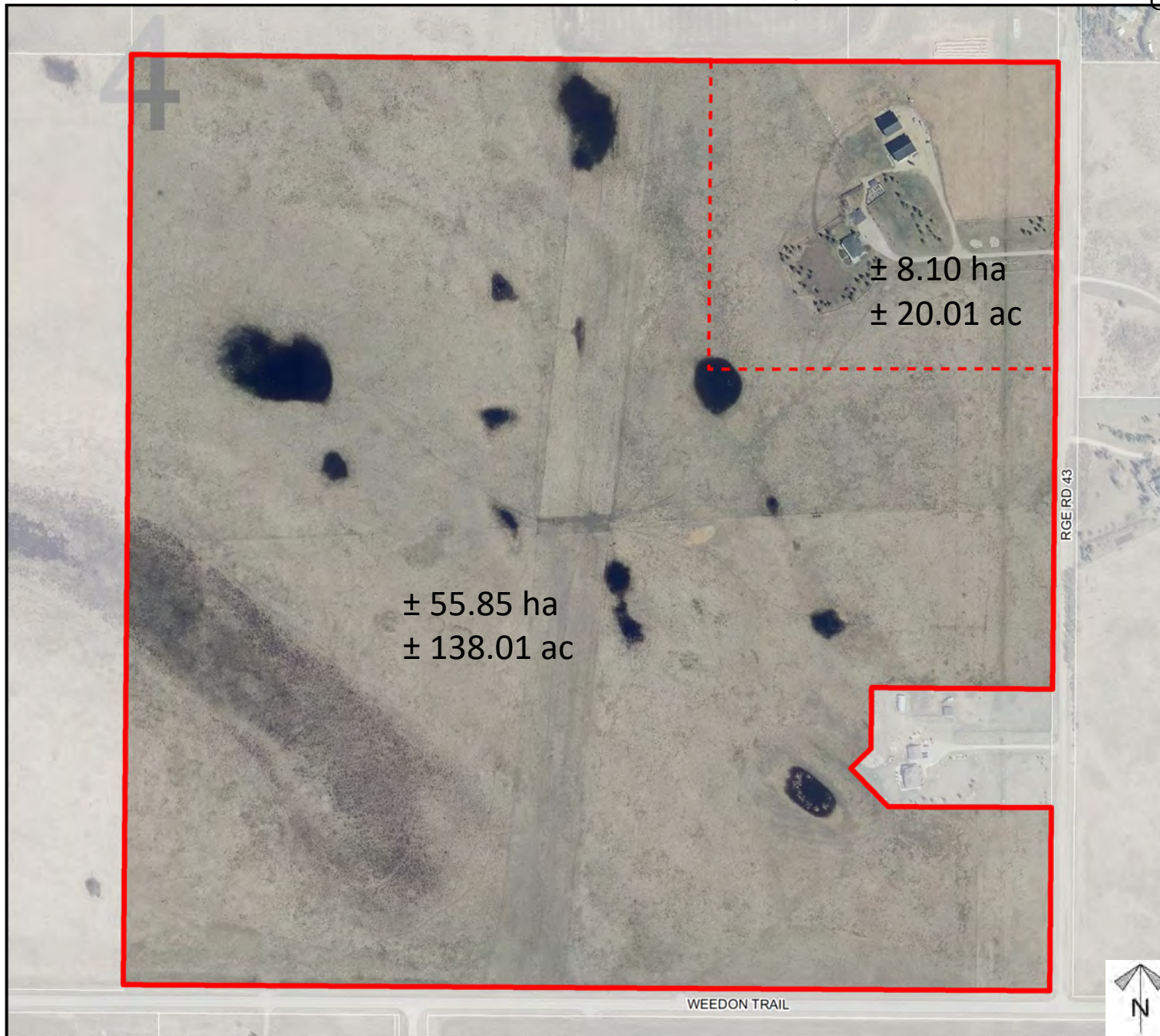




## Development Proposal

### Redesignation Proposal

To redesignate a  $\pm 8.10$  ha ( $\pm 20.01$  ac) portion on the northeastern side of the subject lands from Agricultural, General District (A-GEN) to Agricultural, Small Parcel District (A-SML p8.1) to accommodate a future subdivision.



Division: 3  
Roll: 07804003  
File: PL20220059  
Printed: April 14, 2022  
Legal: Lot: 1 Block: 2  
Plan: 1213104 within SE-04-27-04-W05M





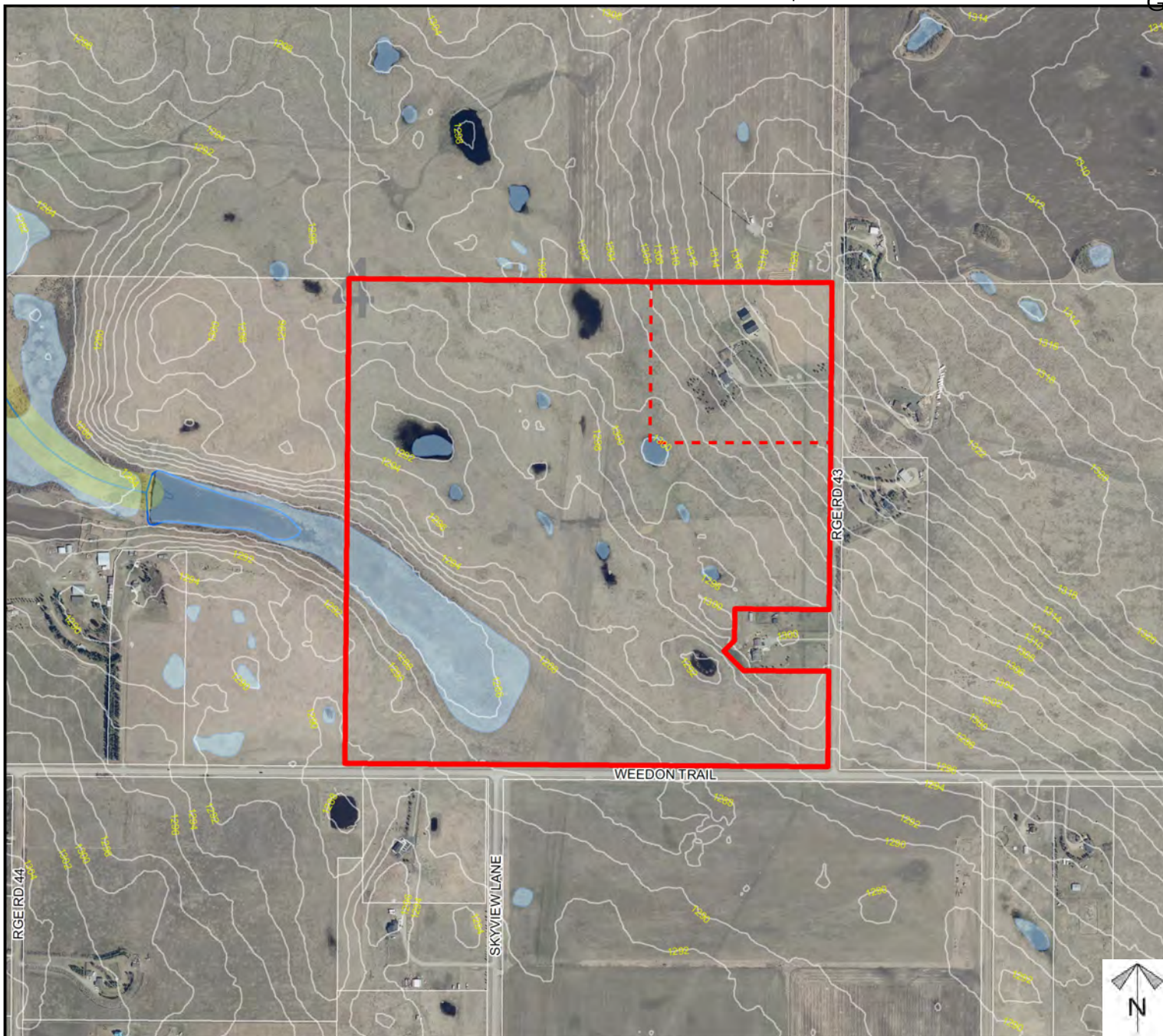
## Environmental

### Redesignation Proposal

To redesignate a  $\pm 8.10$  ha ( $\pm 20.01$  ac) portion on the northeastern side of the subject lands from Agricultural, General District (A-GEN) to Agricultural, Small Parcel District (A-SML p8.1) to accommodate a future subdivision.

-  Subject Lands
-  Contour - 2 meters
-  Riparian Setbacks
-  Alberta Wetland Inventory
-  Surface Water

Division: 3  
 Roll: 07804003  
 File: PL20220059  
 Printed: April 14, 2022  
 Legal: Lot: 1 Block: 2  
 Plan: 1213104 within SE-04-27-04-W05M



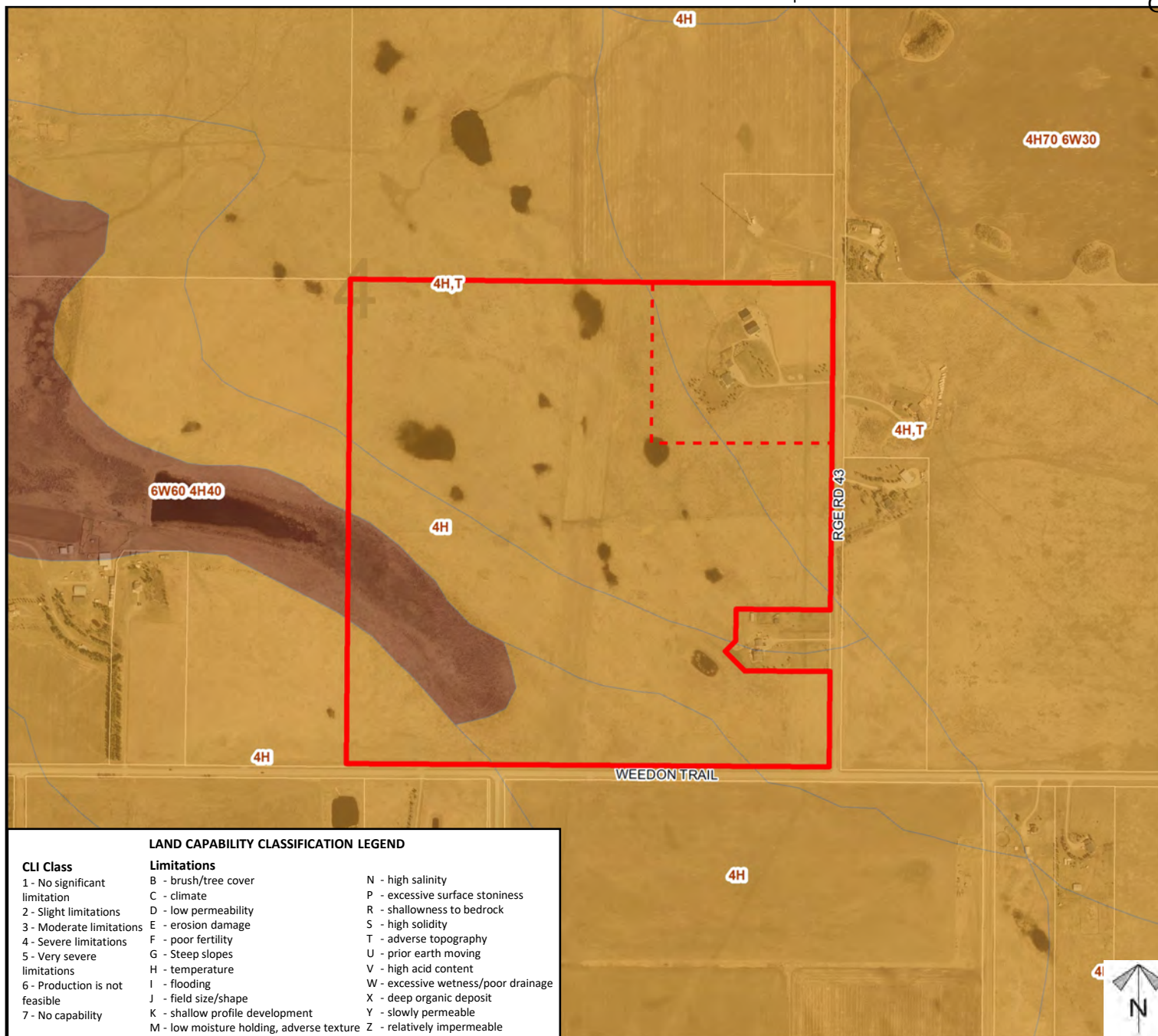




## Soil Classifications

### Redesignation Proposal

To redesignate a  $\pm 8.10$  ha ( $\pm 20.01$  ac) portion on the northeastern side of the subject lands from Agricultural, General District (A-GEN) to Agricultural, Small Parcel District (A-SML p8.1) to accommodate a future subdivision.



#### LAND CAPABILITY CLASSIFICATION LEGEND

##### CLI Class

- 1 - No significant limitation
- 2 - Slight limitations
- 3 - Moderate limitations
- 4 - Severe limitations
- 5 - Very severe limitations
- 6 - Production is not feasible
- 7 - No capability

##### Limitations

- B - brush/tree cover
- C - climate
- D - low permeability
- E - erosion damage
- F - poor fertility
- G - Steep slopes
- H - temperature
- I - flooding
- J - field size/shape
- K - shallow profile development
- M - low moisture holding, adverse texture
- N - high salinity
- P - excessive surface stoniness
- R - shallowness to bedrock
- S - high solidity
- T - adverse topography
- U - prior earth moving
- V - high acid content
- W - excessive wetness/poor drainage
- X - deep organic deposit
- Y - slowly permeable
- Z - relatively impermeable

Division: 3  
Roll: 07804003  
File: PL20220059  
Printed: April 14, 2022  
Legal: Lot: 1 Block: 2  
Plan: 1213104 within SE-04-27-04-W05M



## Landowner Circulation Area

### Redesignation Proposal

To redesignate a  $\pm 8.10$  ha ( $\pm 20.01$  ac) portion on the northeastern side of the subject lands from Agricultural, General District (A-GEN) to Agricultural, Small Parcel District (A-SML p8.1) to accommodate a future subdivision.

### Legend

Support



Not Support



Division: 3  
Roll: 07804003  
File: PL20220059  
Printed: April 14, 2022  
Legal: Lot: 1 Block: 2  
Plan: 1213104 within SE-04-27-04-W05M

