



Location & Context

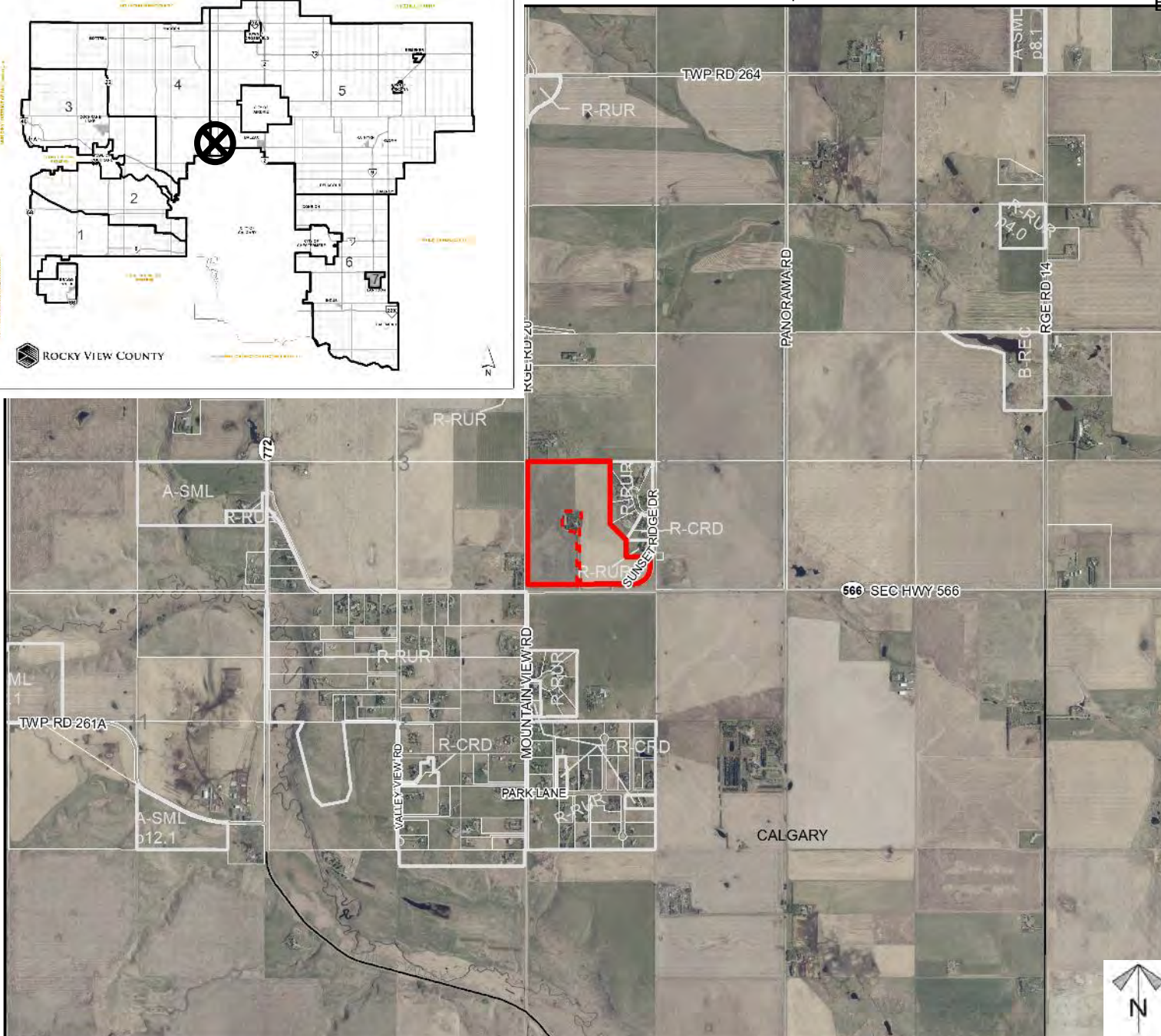
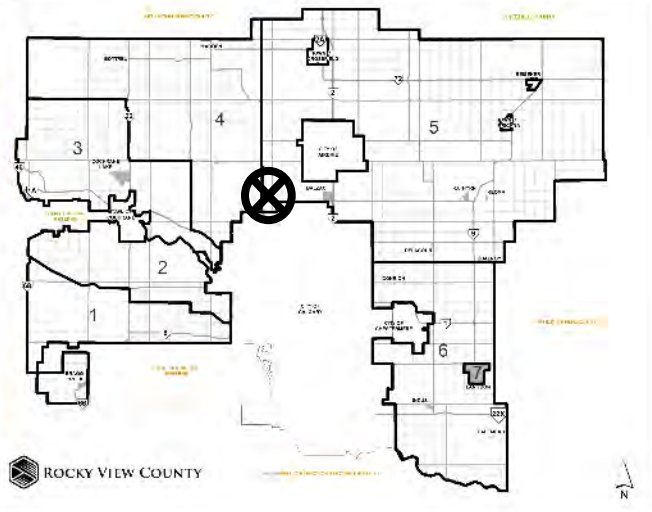
MSDP Proposal PL20220060

To adopt the Divine Mercy Centre Master Site Development Plan (MSDP) that provides guidelines to accommodate the existing catholic religious assembly.

Redesignation Proposal PL20210034

To redesignate ± 2.09 hectare (5.17 acres) of the subject lands from Agricultural, General District (A-GEN) to Special, Public Service District (S-PUB) to accommodate the existing catholic religious assembly.

Division: 5
Roll: 06518002
File: PL20220060/
PL20210034
Printed: April 19, 2022
Legal: A portion of SW-18-
26-01-W05M





Development Proposal

MSDP Proposal PL20220060

To adopt the Divine Mercy Centre Master Site Development Plan (MSDP) that provides guidelines to accommodate the existing catholic religious assembly.

Redesignation Proposal PL20210034

To redesignate ± 2.09 hectare (5.17 acres) of the subject lands from Agricultural, General District (A-GEN) to Special, Public Service District (S-PUB) to accommodate the existing catholic religious assembly.

Division: 5
Roll: 06518002
File: PL20220060/
PL20210034
Printed: April 19, 2022
Legal: A portion of SW-18-
26-01-W05M





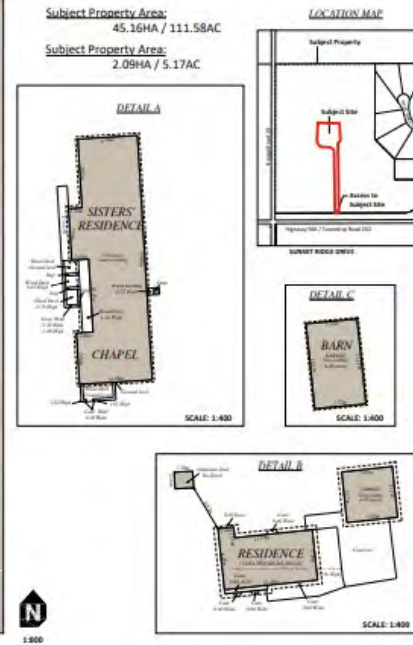
Development Proposal & Site Photos

MSDP Proposal PL20220060

To adopt the Divine Mercy Centre Master Site Development Plan (MSDP) that provides guidelines to accommodate the existing catholic religious assembly.

Redesignation Proposal PL20210034

To redesignate ± 2.09 hectare (5.17 acres) of the subject lands from Agricultural, General District (A-GEN) to Special, Public Service District (S-PUB) to accommodate the existing catholic religious assembly.



DIVINE MERCY CENTRE



Division: 5
Roll: 06518002
File: PL20220060/
PL20210034
Printed: April 19, 2022
Legal: A portion of SW-18-
26-01-W05M



Environmental

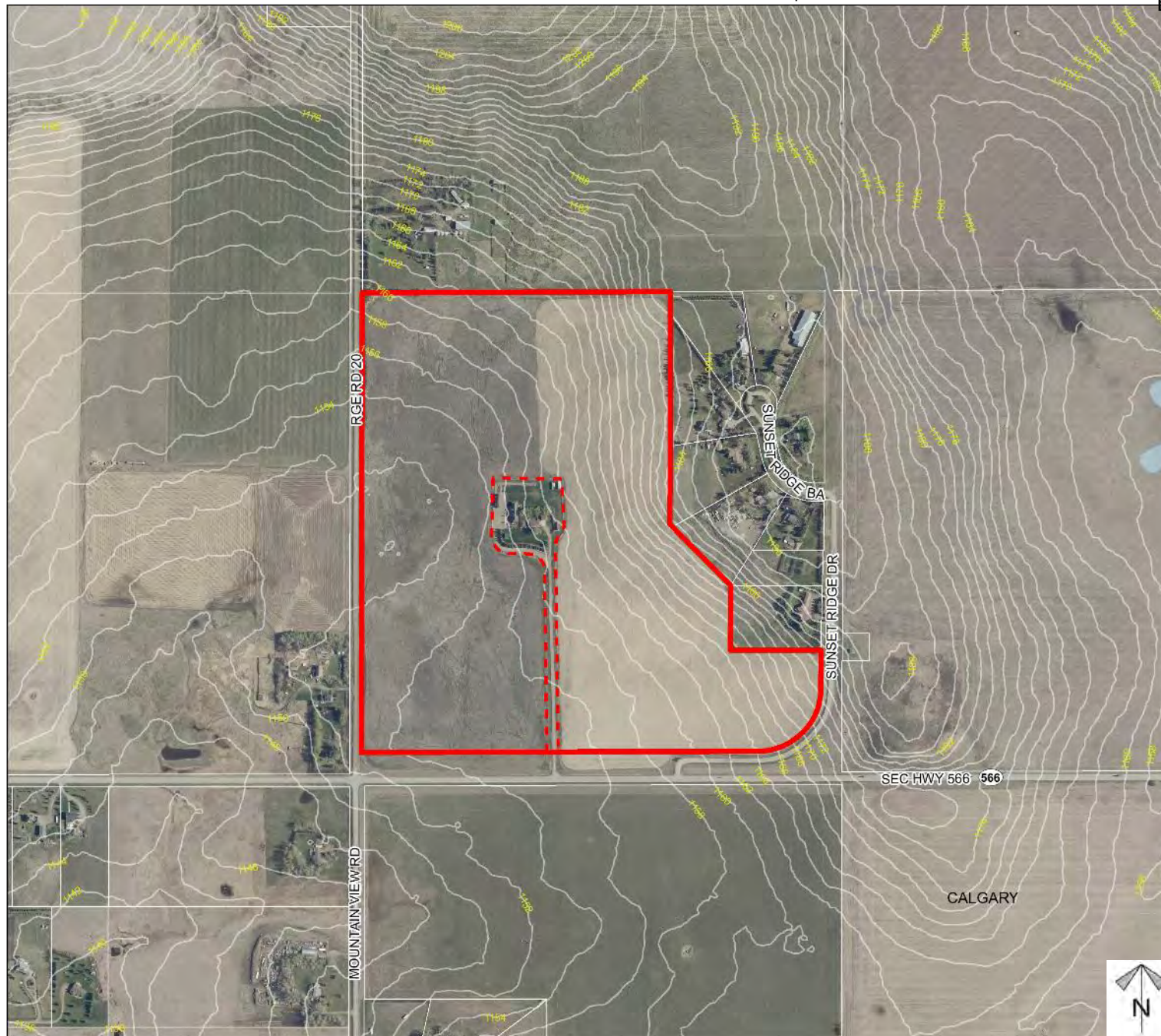
MSDP Proposal PL20220060

To adopt the Divine Mercy Centre Master Site Development Plan (MSDP) that provides guidelines to accommodate the existing catholic religious assembly.

Redesignation Proposal PL20210034

To redesignate ± 2.09 hectare (5.17 acres) of the subject lands from Agricultural, General District (A-GEN) to Special, Public

-  Subject Lands
-  Contour - 2 meters
-  Riparian Setbacks
-  Alberta Wetland Inventory
-  Surface Water



Division: 5
 Roll: 06518002
 File: PL20220060/
 PL20210034
 Printed: April 19, 2022
 Legal: A portion of SW-18-
 26-01-W05M

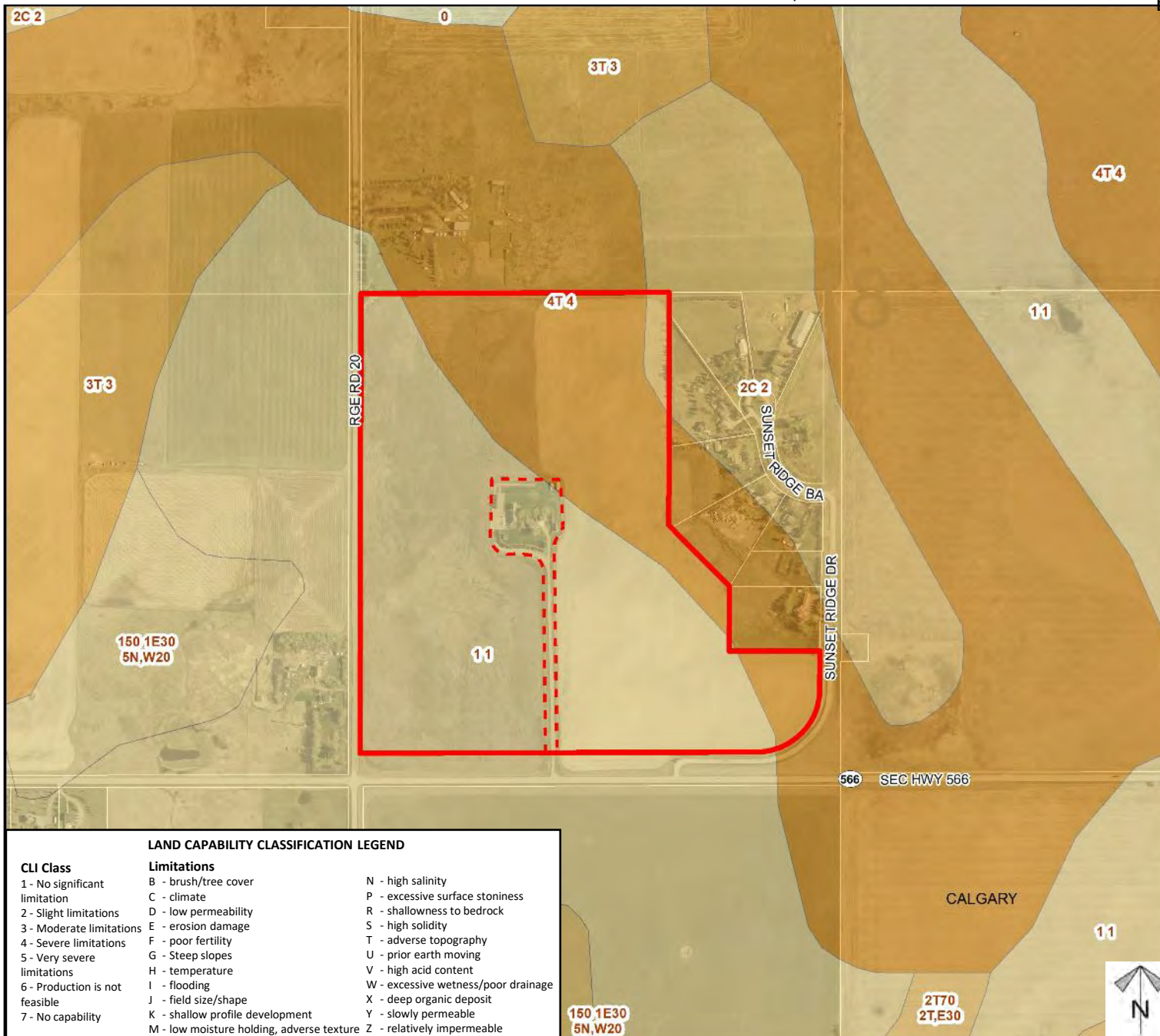
Soil Classifications

MSDP Proposal PL20220060

To adopt the Divine Mercy Centre Master Site Development Plan (MSDP) that provides guidelines to accommodate the existing catholic religious assembly.

Redesignation Proposal PL20210034

To redesignate ± 2.09 hectare (5.17 acres) of the subject lands from Agricultural, General District (A-GEN) to Special, Public Service District (S-PUB) to accommodate the existing catholic religious assembly.



Division: 5
Roll: 06518002
File: PL20220060/
PL20210034
Printed: April 19, 2022
Legal: A portion of SW-18-
26-01-W05M



Landowner Circulation Area

MSDP Proposal PL20220060

To adopt the Divine Mercy Centre Master Site Development Plan (MSDP) that provides guidelines to accommodate the existing catholic religious assembly.

Redesignation Proposal PL20210034

To redesignate ± 2.09 hectare (5.17 acres) of the subject lands from Agricultural, General District (A-GEN) to Special, Public Service District (S-PUB) to accommodate the existing catholic religious assembly.

Legend

Support (16)



Not Support (2)



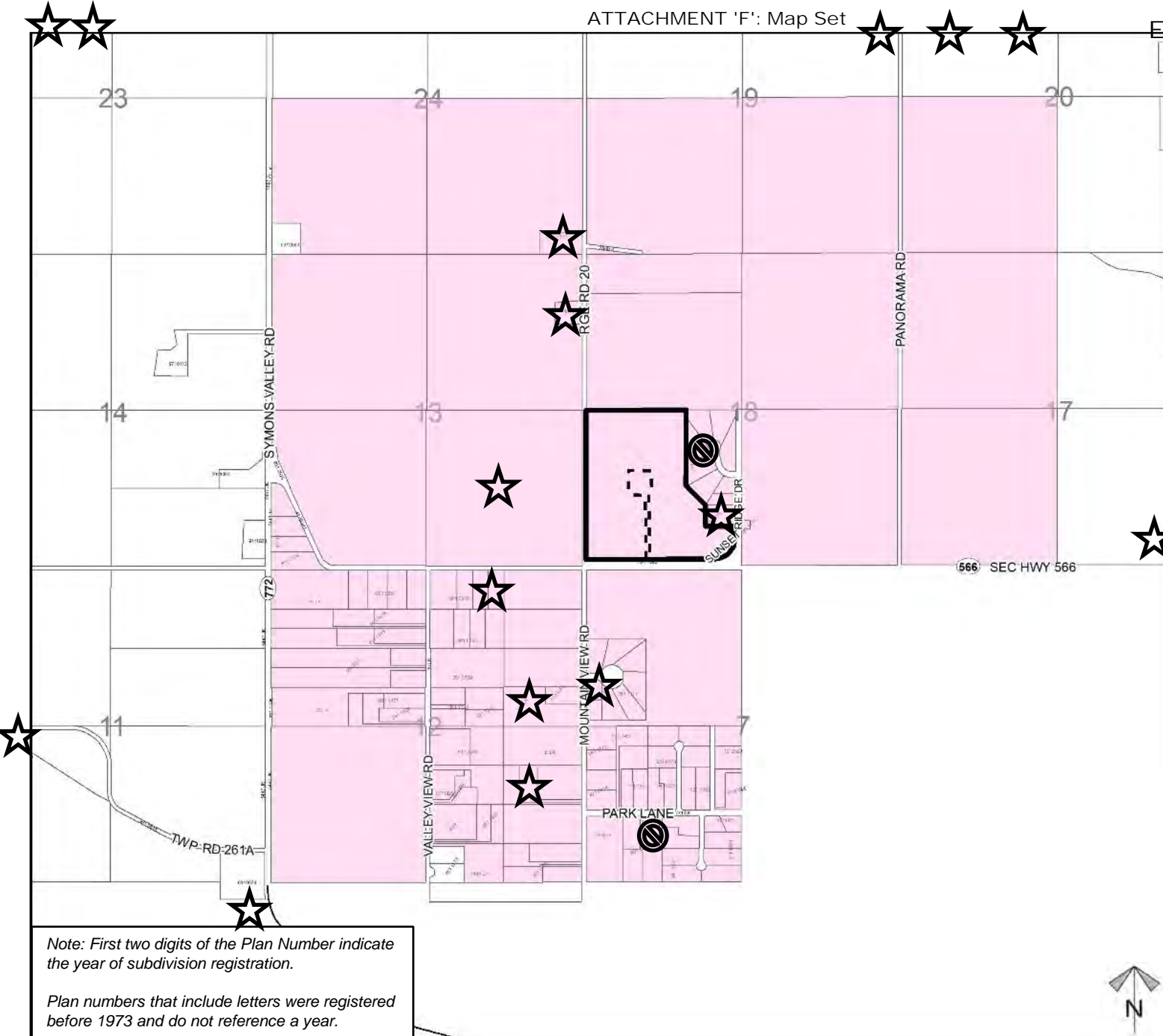
Division: 5

Roll: 06518002

File: PL20220060/
PL20210034

Printed: April 19, 2022

Legal: A portion of SW-18-
26-01-W05M



Note: First two digits of the Plan Number indicate the year of subdivision registration.

Plan numbers that include letters were registered before 1973 and do not reference a year.