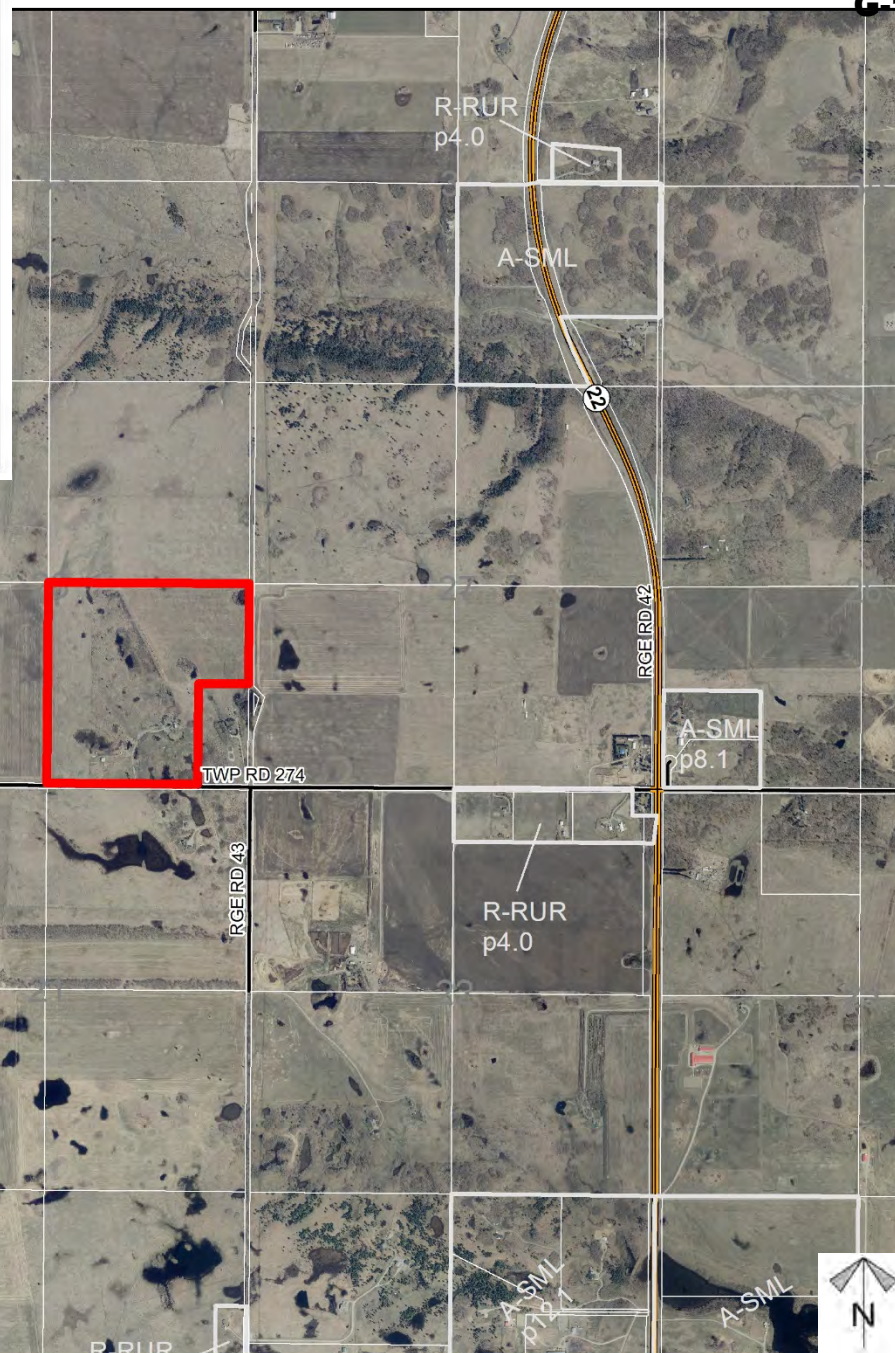
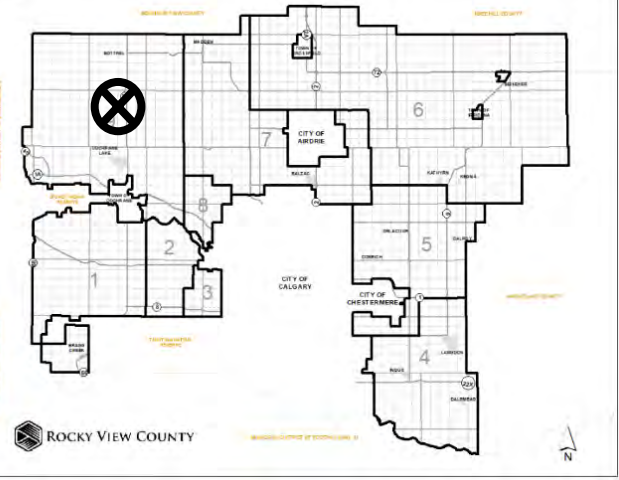


Location & Context

Redesignation and Subdivision Proposal

To redesignate the subject lands from A-GEN District to A-SML District to facilitate the creation a \pm 28.33 hectare (70.0 acre) parcel (Lot 1) with a \pm 28.33 hectare (70.0 acre) remainder (Lot 2).



Division: 9
Roll: 07828003
File: PL20200118
Printed: September 23, 2020
Legal: SE-28-27-04-W05M

Development Proposal

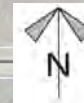
Redesignation and Subdivision Proposal

To redesignate the subject lands from A-GEN District to A-SML District to facilitate the creation a \pm 28.33 hectare (70.0 acre) parcel (Lot 1) with a \pm 28.33 hectare (70.0 acre) remainder (Lot 2).



TWP RD 274

RGE RD 43



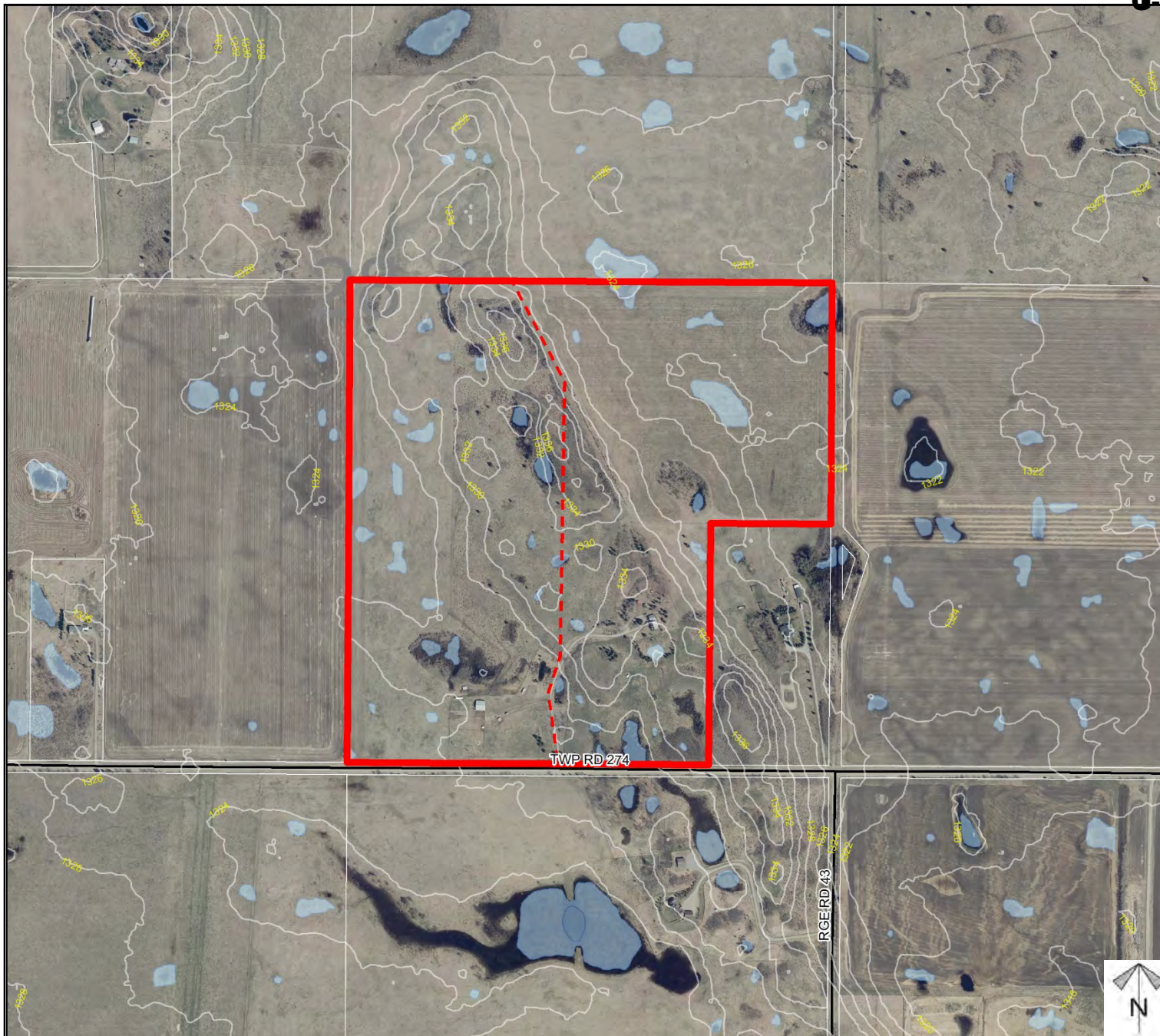
Division: 9
 Roll: 07828003
 File: PL20200118
 Printed: September 23, 2020
 Legal: SE-28-27-04-W05M

Environmental

Redesignation and Subdivision Proposal

To redesignate the subject lands from A-GEN District to A-SML District to facilitate the creation a \pm 28.33 hectare (70.0 acre) parcel (Lot 1) with a \pm 28.33 hectare (70.0 acre) remainder (Lot 2).

-  Subject Lands
-  Contour - 2 meters
-  Riparian Setbacks
-  Alberta Wetland Inventory
-  Surface Water

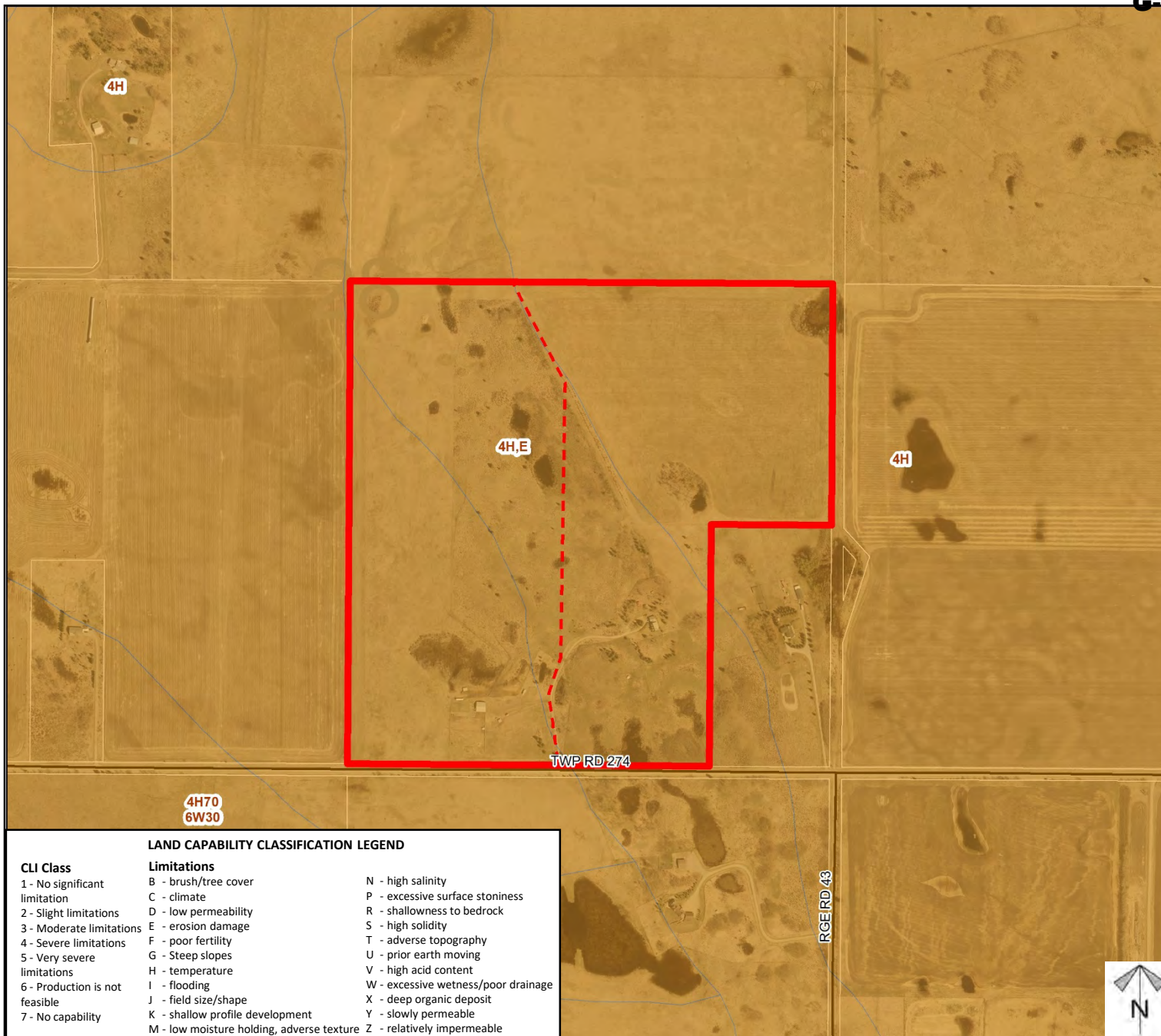


Division: 9
 Roll: 07828003
 File: PL20200118
 Printed: September 23, 2020
 Legal: SE-28-27-04-W05M

Soil Classifications

Redesignation and Subdivision Proposal

To redesignate the subject lands from A-GEN District to A-SML District to facilitate the creation a \pm 28.33 hectare (70.0 acre) parcel (Lot 1) with a \pm 28.33 hectare (70.0 acre) remainder (Lot 2).



LAND CAPABILITY CLASSIFICATION LEGEND

CLI Class

- 1 - No significant limitation
- 2 - Slight limitations
- 3 - Moderate limitations
- 4 - Severe limitations
- 5 - Very severe limitations
- 6 - Production is not feasible
- 7 - No capability

Limitations

- B - brush/tree cover
- C - climate
- D - low permeability
- E - erosion damage
- F - poor fertility
- G - Steep slopes
- H - temperature
- I - flooding
- J - field size/shape
- K - shallow profile development
- M - low moisture holding, adverse texture
- N - high salinity
- P - excessive surface stoniness
- R - shallowness to bedrock
- S - high solidity
- T - adverse topography
- U - prior earth moving
- V - high acid content
- W - excessive wetness/poor drainage
- X - deep organic deposit
- Y - slowly permeable
- Z - relatively impermeable

Division: 9
Roll: 07828003
File: PL20200118
Printed: September 23, 2020
Legal: SE-28-27-04-W05M

Redesignation and Subdivision Proposal

To redesignate the subject lands from A-GEN District to A-SML District to facilitate the creation a \pm 28.33 hectare (70.0 acre) parcel (Lot 1) with a \pm 28.33 hectare (70.0 acre) remainder (Lot 2).

Legend

Support



Opposition



Note: First two digits of the Plan Number indicate the year of subdivision registration.

Plan numbers that include letters were registered before 1973 and do not reference a year.

Division: 9
Roll: 07828003
File: PL20200118
Printed: September 23, 2020
Legal: SE-28-27-04-W05M