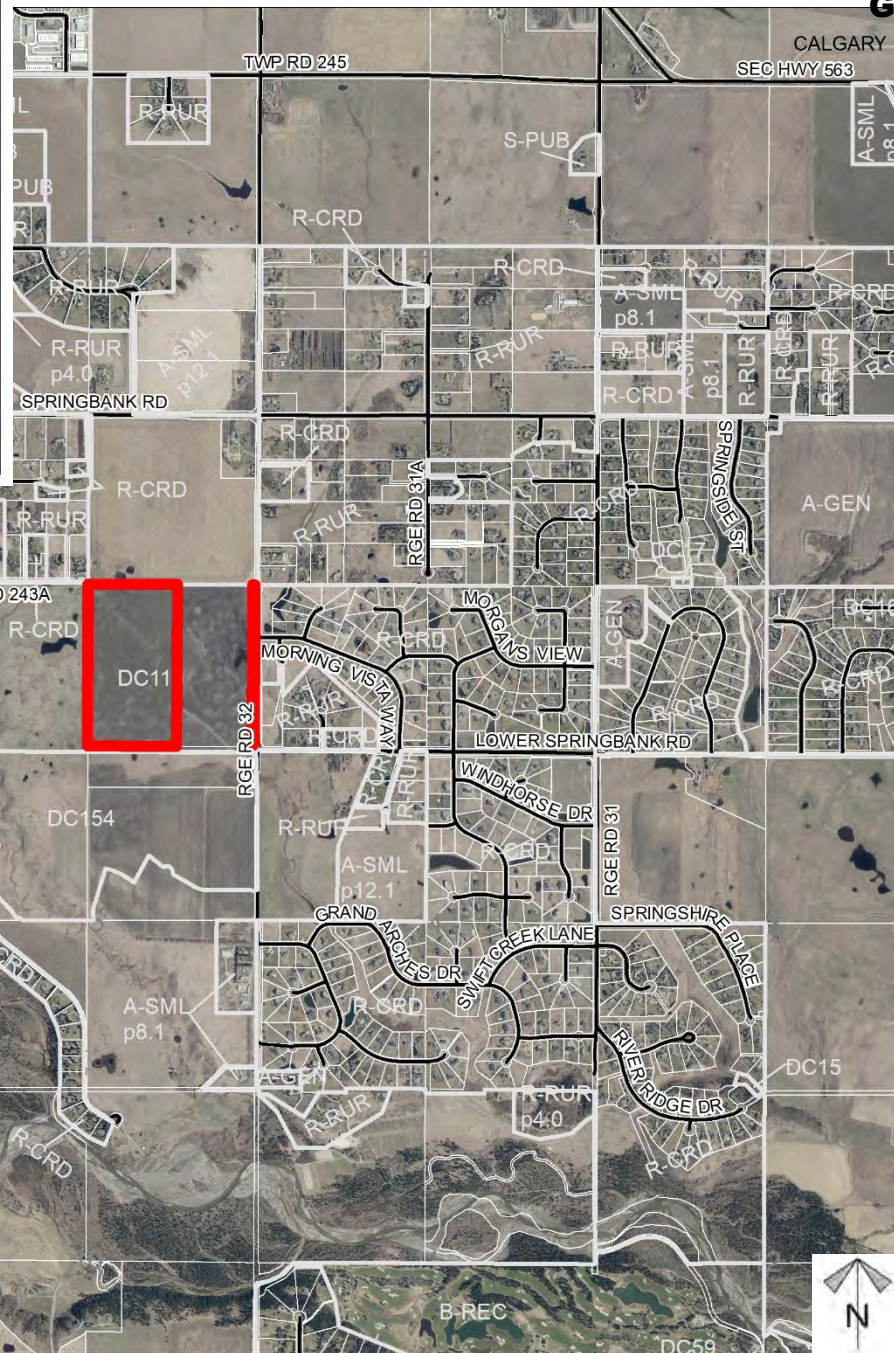
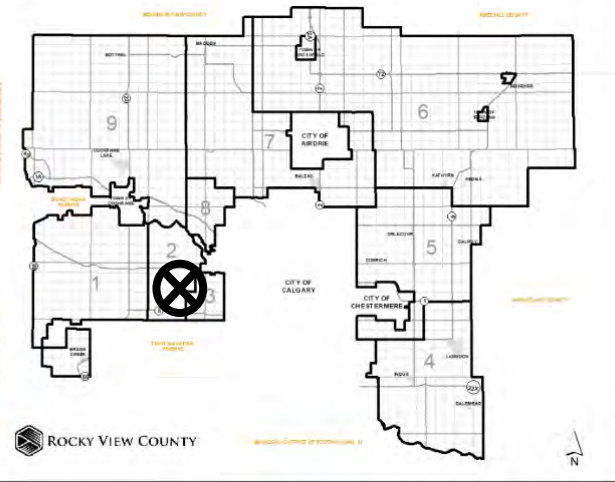


Location & Context

Conceptual Scheme Proposal

To amend Cell A of the Springbank Creek Conceptual Scheme to allow for the development of a private school and associated recreational facilities on the subject parcel.



Development Proposal

Conceptual Scheme Proposal

To amend Cell A of the Springbank Creek Conceptual Scheme to allow for the development of a private school and associated recreational facilities on the subject parcel.

RGE RD 32



Division: 2
Roll: 04722001
File: PL20200130
Printed: Sept 21, 2020
Legal: SE-22-24-03-W05M



Conceptual Scheme Proposal

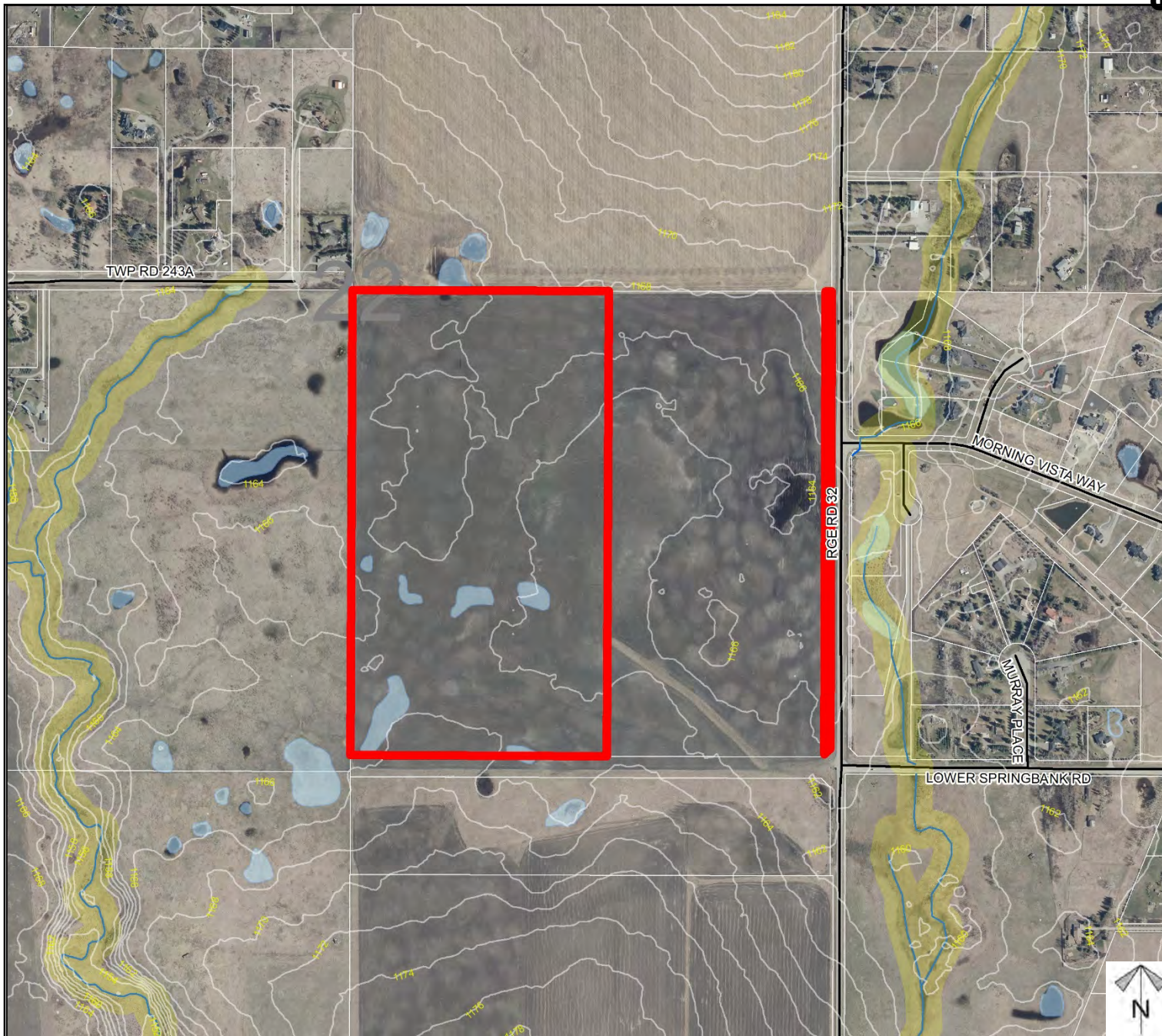
To amend Cell A of the Springbank Creek Conceptual Scheme to allow for the development of a private school and associated recreational facilities on the subject parcel.

Division: 2
 Roll: 04722001
 File: PL20200130
 Printed: Sept 21, 2020
 Legal: SE-22-24-03-W05M

Environmental

Conceptual Scheme Proposal

To amend Cell A of the Springbank Creek Conceptual Scheme to allow for the development of a private school and associated recreational facilities on the subject parcel.



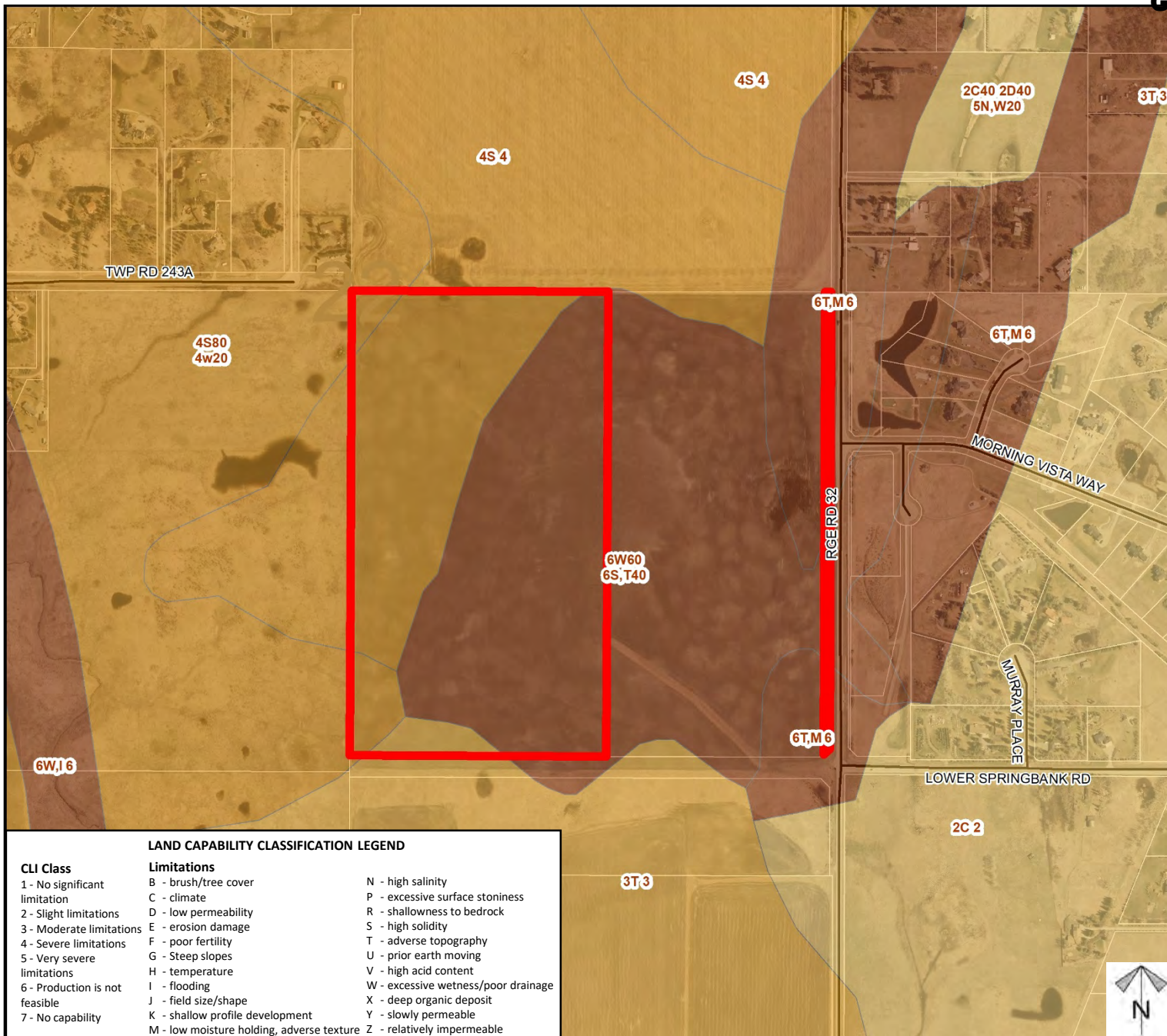
- Subject Lands
- Contour - 2 meters
- Riparian Setbacks
- Alberta Wetland Inventory
- Surface Water

Division: 2
 Roll: 04722001
 File: PL20200130
 Printed: Sept 21, 2020
 Legal: SE-22-24-03-W05M

Soil Classifications

Conceptual Scheme Proposal

To amend Cell A of the Springbank Creek Conceptual Scheme to allow for the development of a private school and associated recreational facilities on the subject parcel.



LAND CAPABILITY CLASSIFICATION LEGEND

CLI Class

- 1 - No significant limitation
- 2 - Slight limitations
- 3 - Moderate limitations
- 4 - Severe limitations
- 5 - Very severe limitations
- 6 - Production is not feasible
- 7 - No capability

Limitations

- B - brush/tree cover
- C - climate
- D - low permeability
- E - erosion damage
- F - poor fertility
- G - Steep slopes
- H - temperature
- I - flooding
- J - field size/shape
- K - shallow profile development
- M - low moisture holding, adverse texture
- N - high salinity
- P - excessive surface stoniness
- R - shallowness to bedrock
- S - high solidity
- T - adverse topography
- U - prior earth moving
- V - high acid content
- W - excessive wetness/poor drainage
- X - deep organic deposit
- Y - slowly permeable
- Z - relatively impermeable

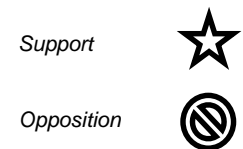
Division: 2
 Roll: 04722001
 File: PL20200130
 Printed: Sept 21, 2020
 Legal: SE-22-24-03-W05M

Landowner Circulation Area

Conceptual Scheme Proposal

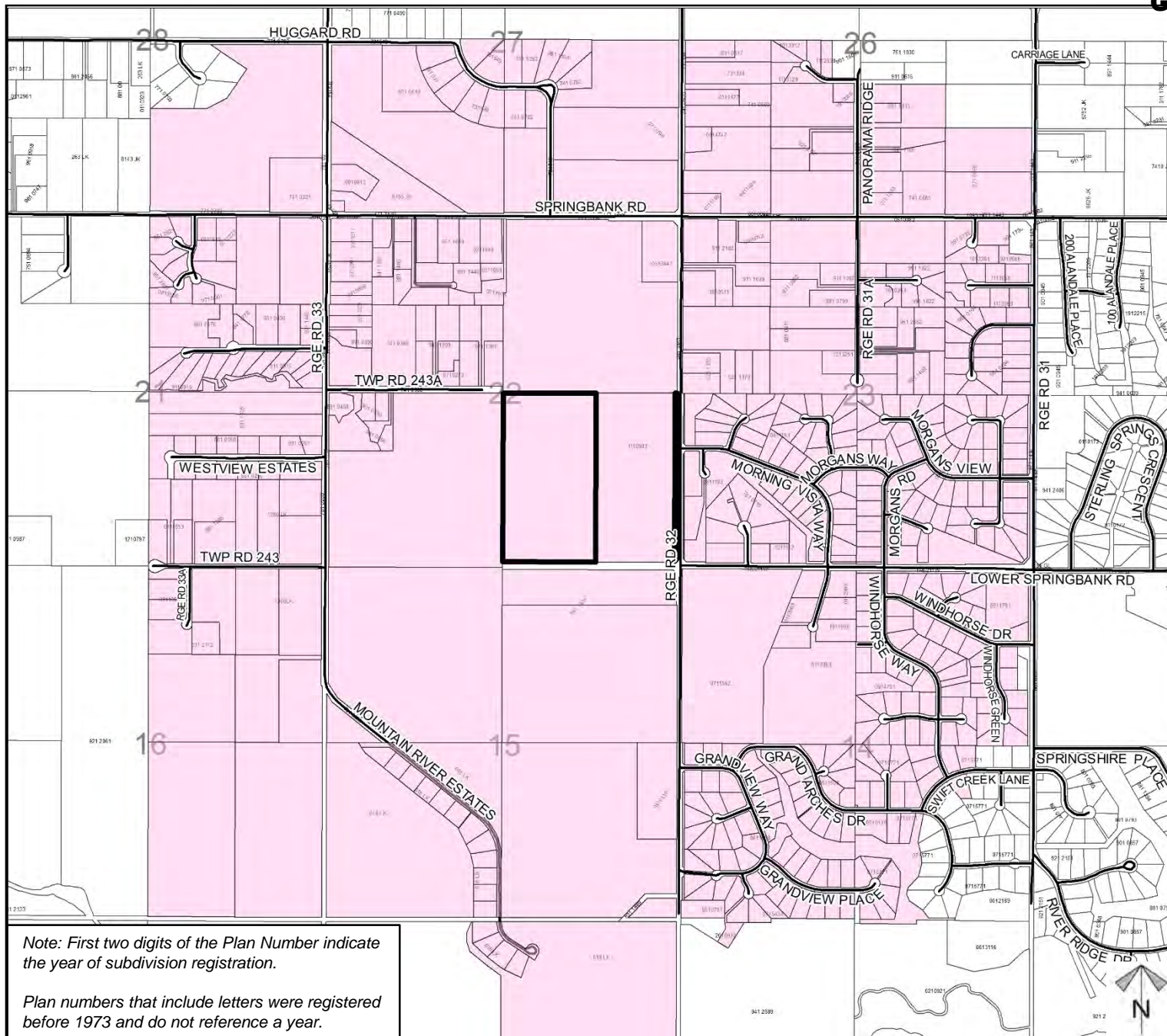
To amend Cell A of the Springbank Creek Conceptual Scheme to allow for the development of a private school and associated recreational facilities on the subject parcel.

Legend



Note: First two digits of the Plan Number indicate the year of subdivision registration.

Plan numbers that include letters were registered before 1973 and do not reference a year.



Division: 2
 Roll: 04722001
 File: PL20200130
 Printed: Sept 21, 2020
 Legal: SE-22-24-03-W05M