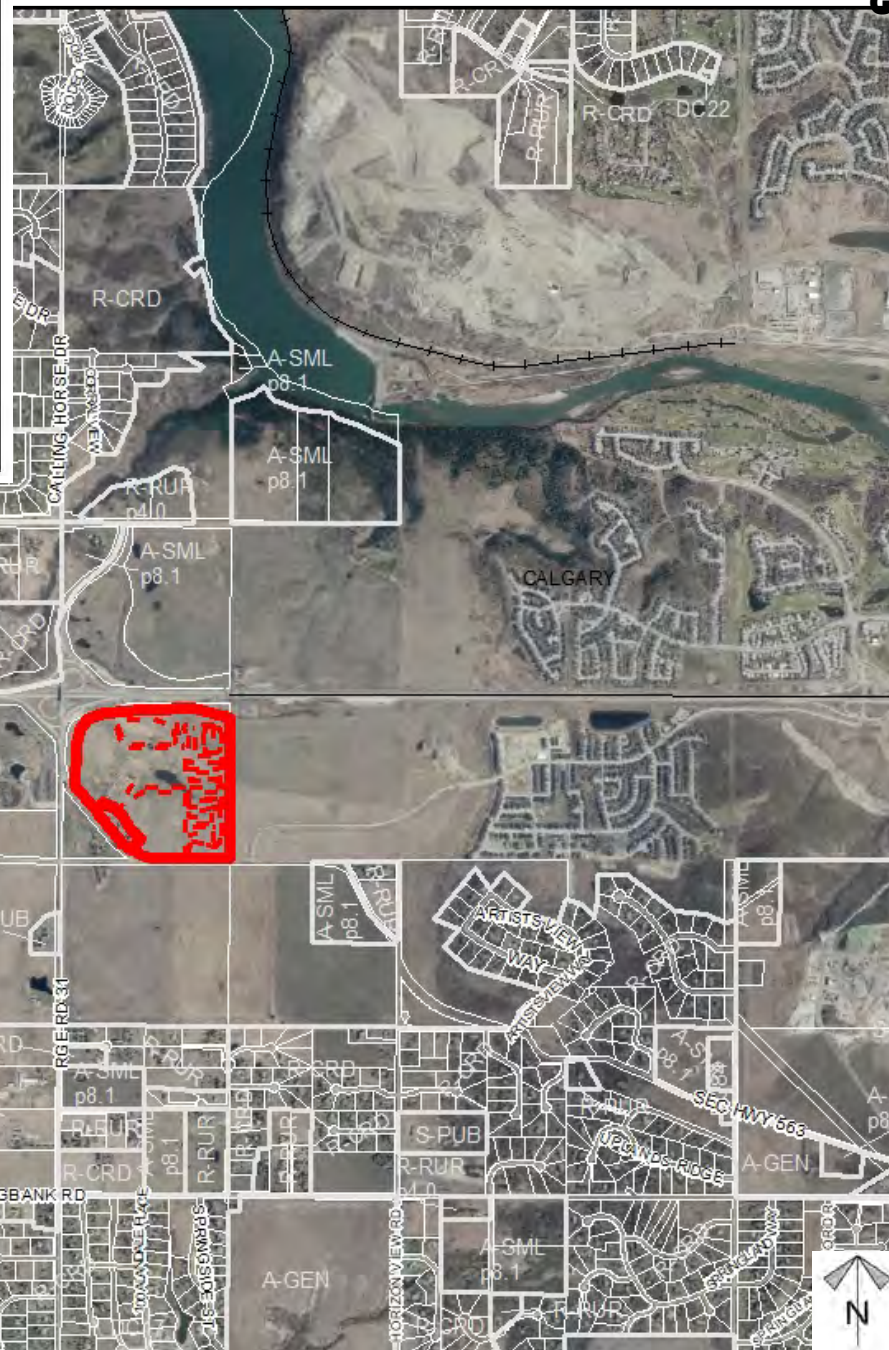
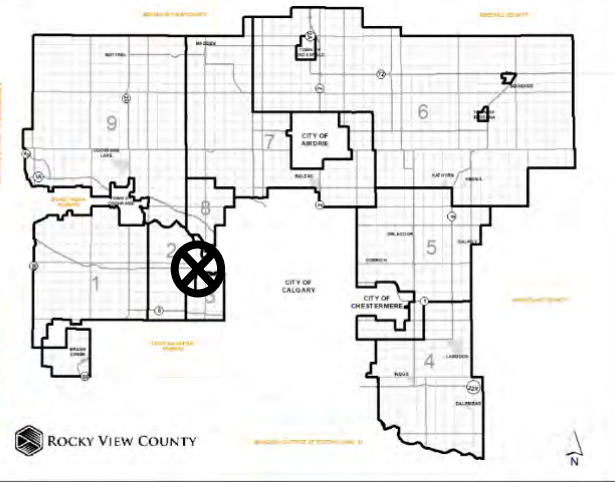
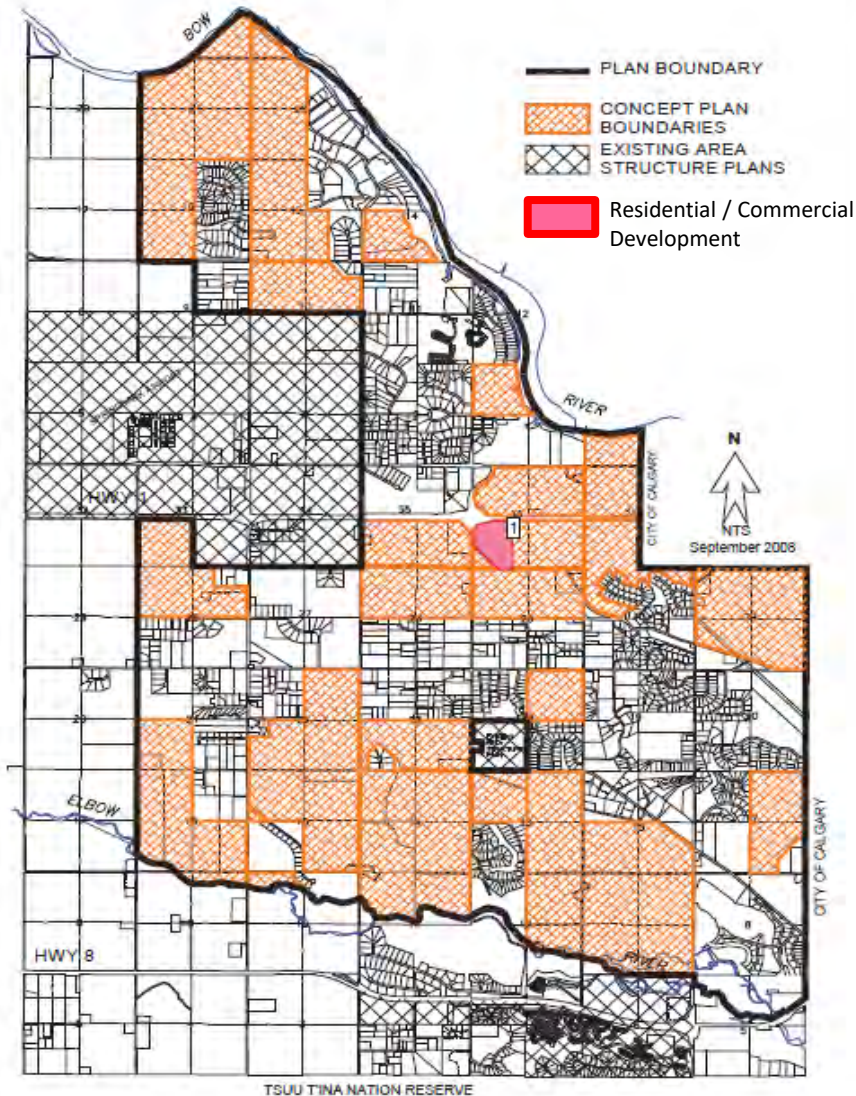


Location
& Context

Division: 3
 Roll: 04736002/011
 File: PL20200087
 Printed: Dec. 7, 2020
 Legal: A portion of SW-36-24-3-W5M

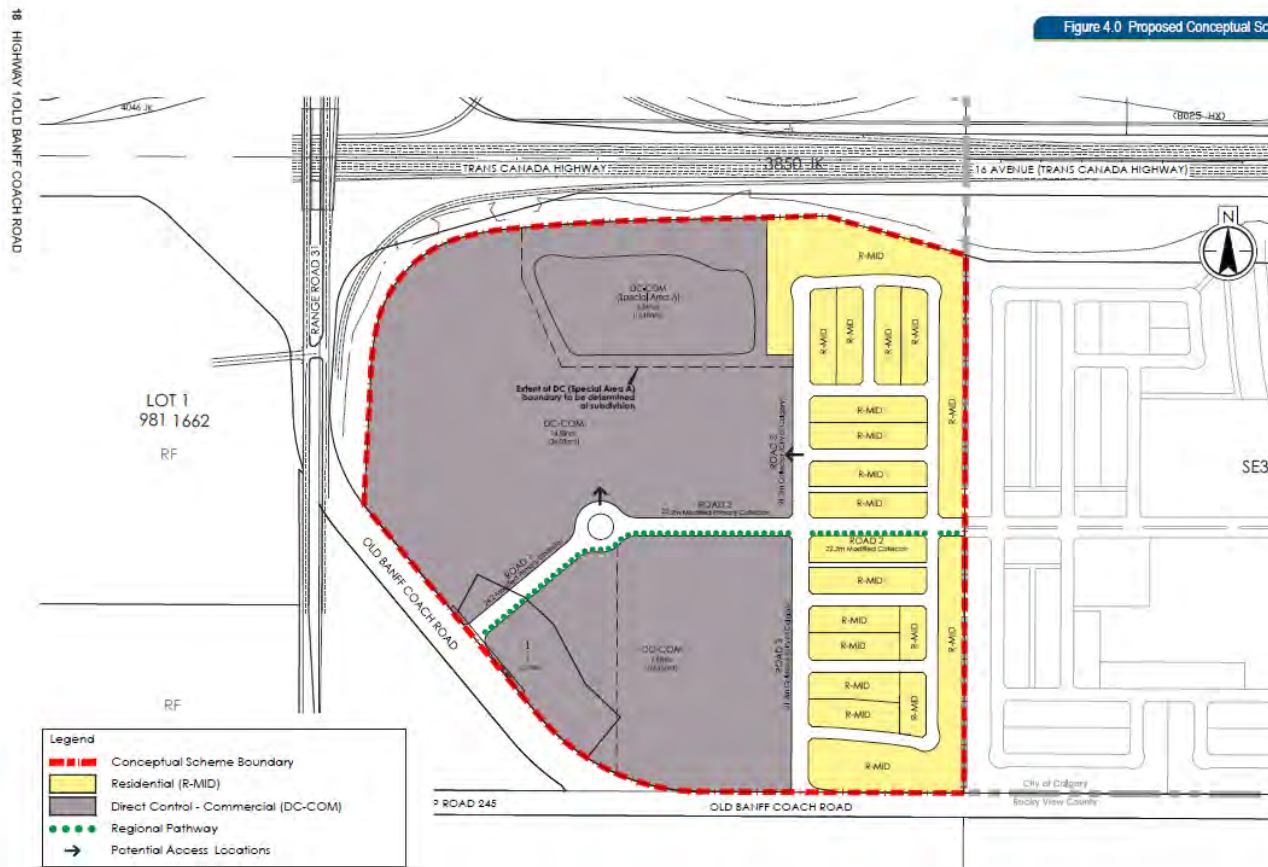
Map 12 - New Residential Areas



ASP Amendment Proposal:

To amend the Central Springbank Area Structure Plan to provide for the proposed Highway 1 / Old Banff Coach Road Conceptual Scheme.

Figure 4.0 Proposed Conceptual Scheme



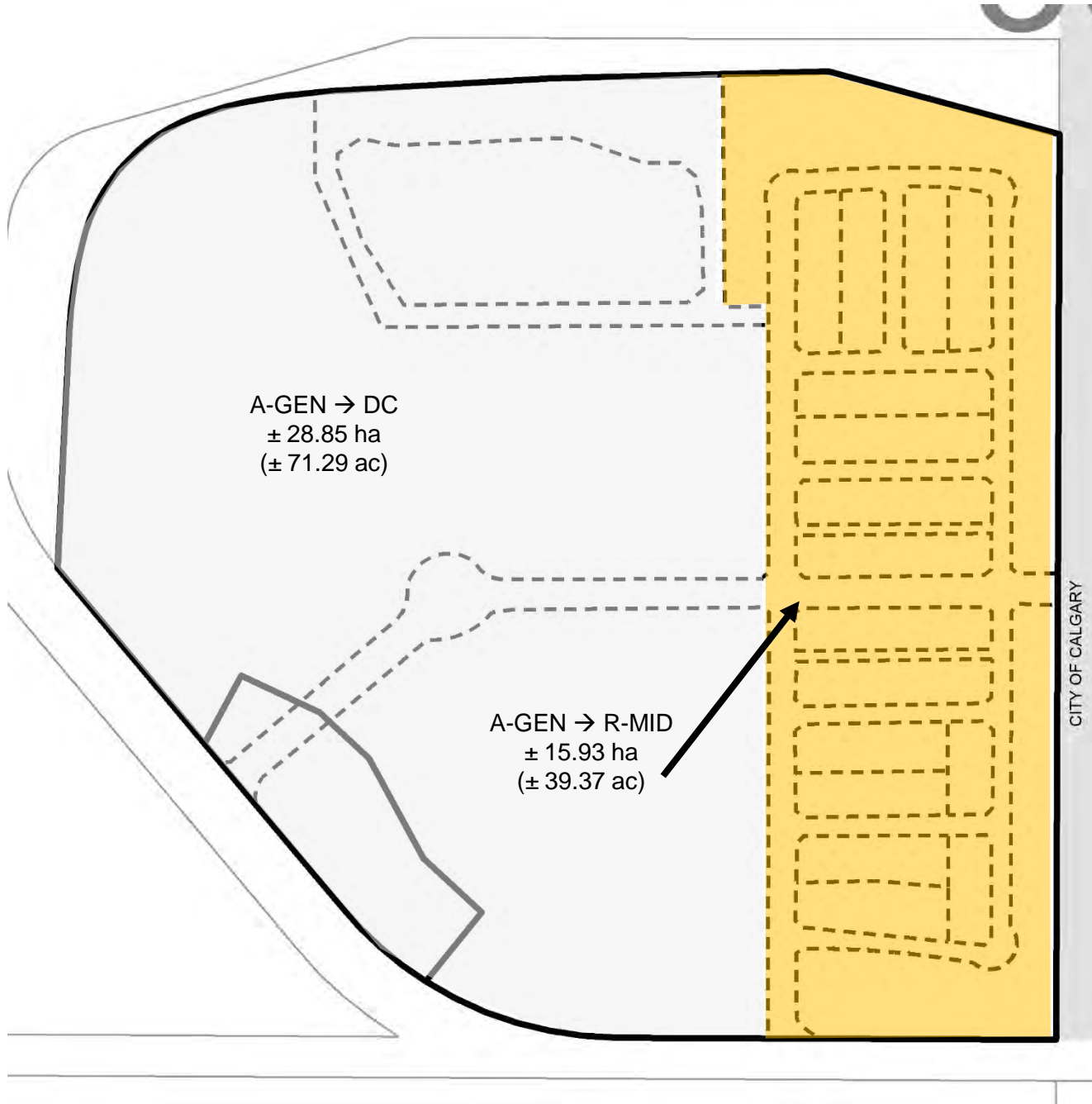
Conceptual Scheme Proposal:

To adopt the Highway 1 / Old Banff Coach Road Conceptual Scheme to provide a policy framework to guide future redesignation, subdivision and development proposals within a portion of SW-36-24-03-W05M.

Division: 3
 Roll: 04736002/011
 File: PL20200087
 Printed: Dec. 7, 2020
 Legal: A portion of SW-36-24-3-W5M

**Development
Proposal:**

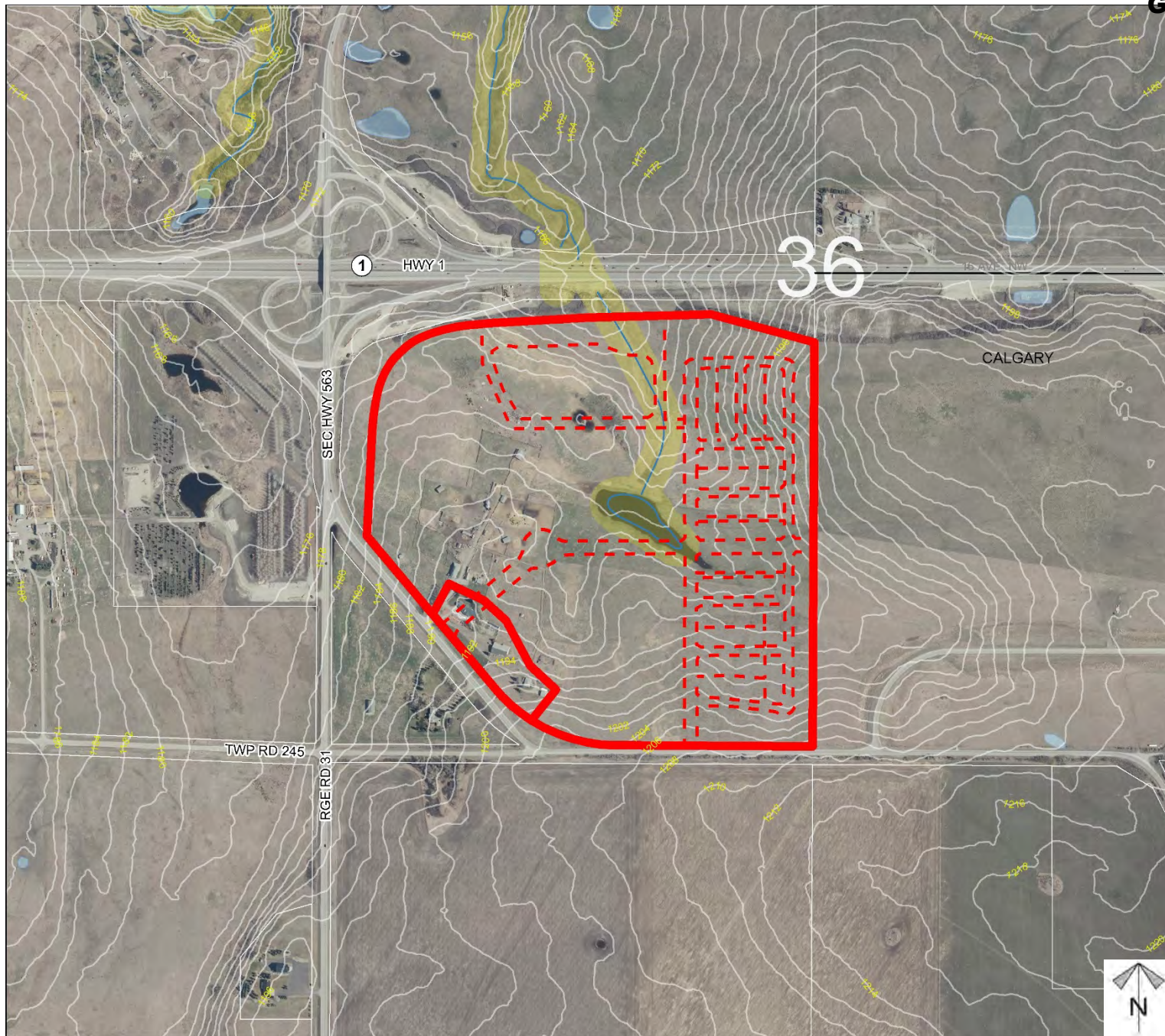
To redesignate the subject lands from Agricultural, General District to Direct Control District to accommodate a mixed commercial development and Residential, Mid-Density Urban District to accommodate the development of a residential community within the eastern portion of the lands.



Division: 3
 Roll: 04736002/011
 File: PL20200087
 Printed: Dec. 7, 2020
 Legal: A portion of SW-36-24-3-W5M



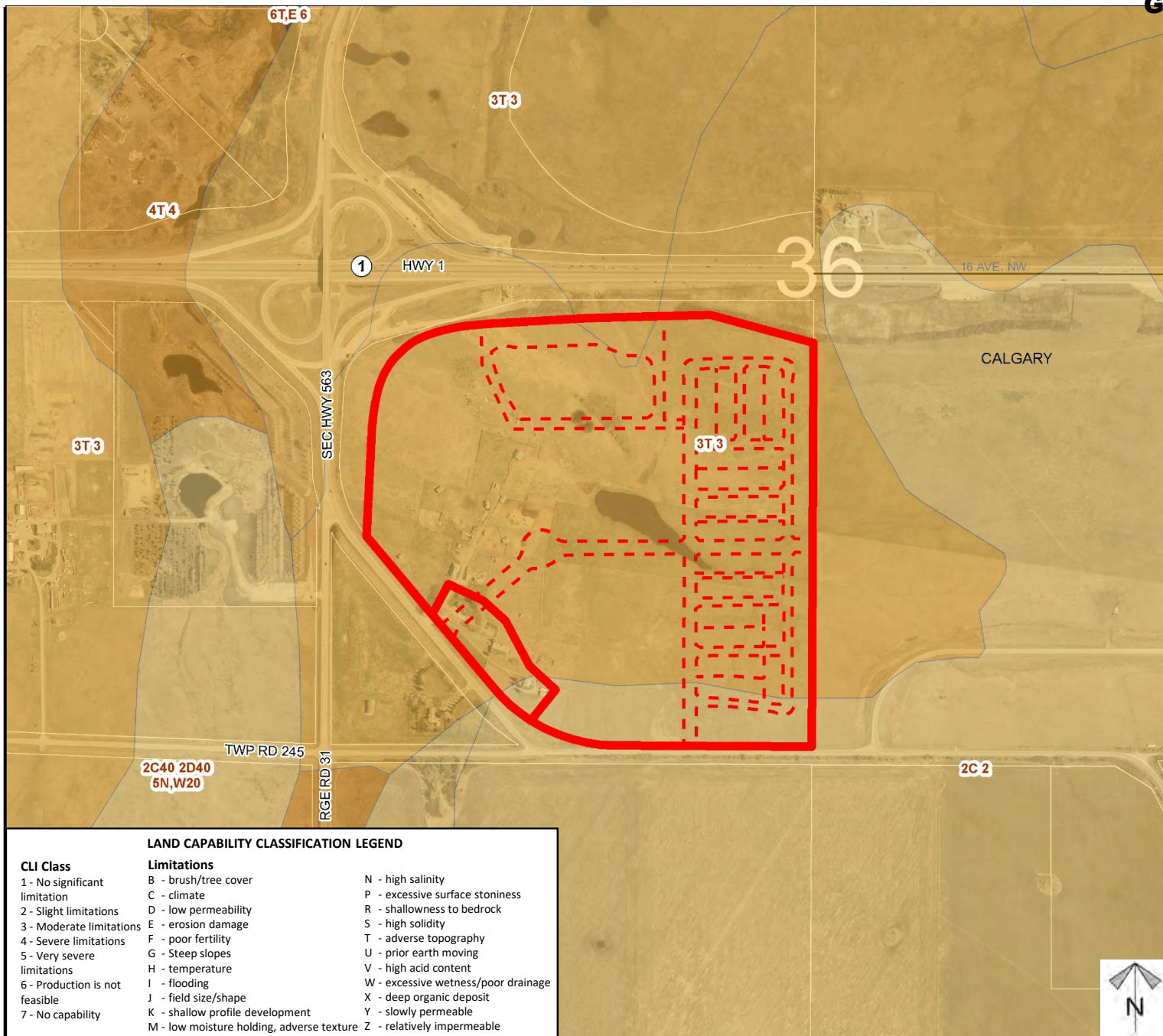
Environmental



- Subject Lands
- Contour - 2 meters
- Riparian Setbacks
- Alberta Wetland Inventory
- Surface Water

Division: 3
Roll: 04736002/011
File: PL20200087
Printed: Dec. 7, 2020
Legal: A portion of SW-36-24-3-W5M

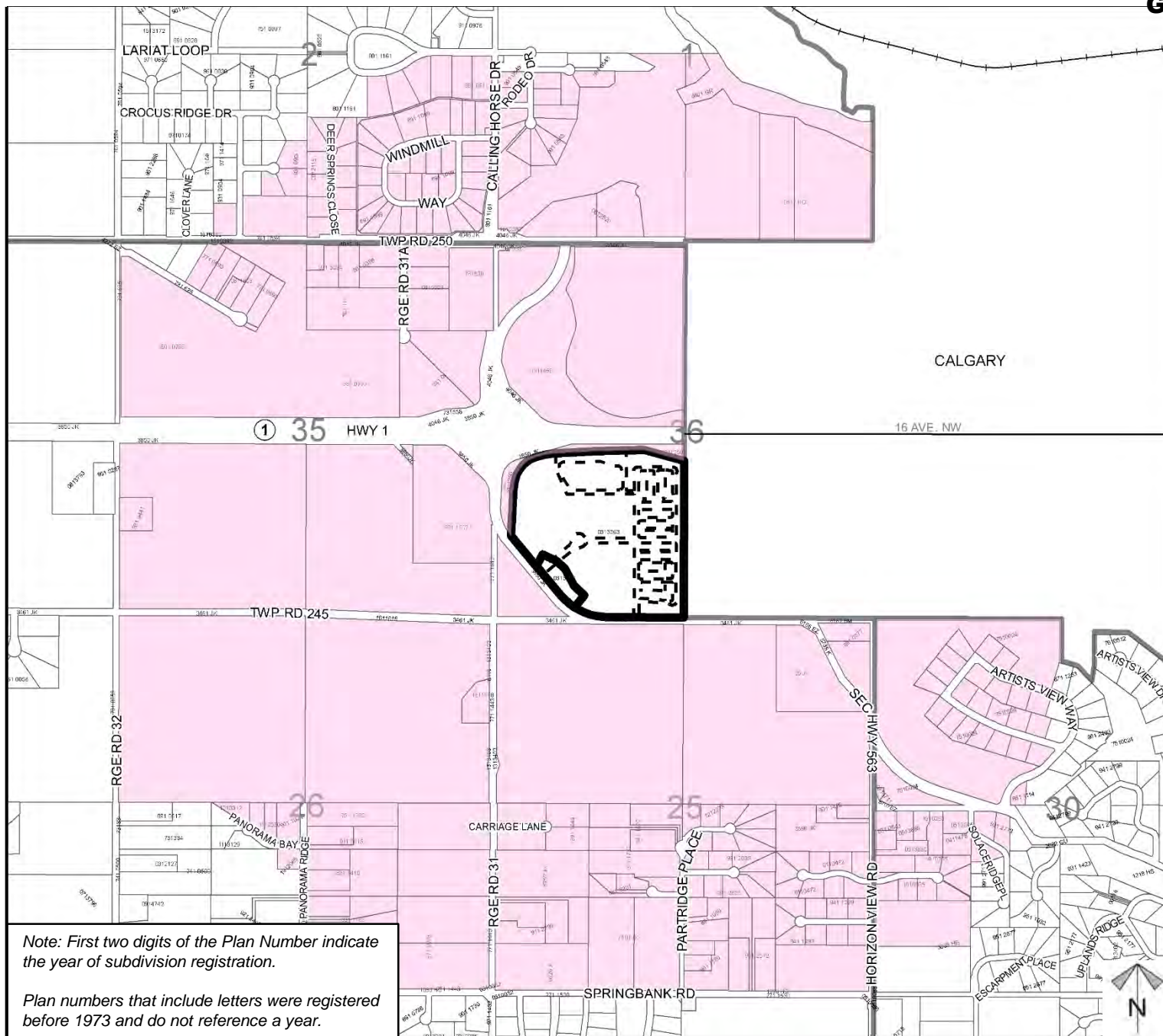
Soil Classifications



Division: 3
 Roll: 04736002/011
 File: PL20200087
 Printed: Dec. 7, 2020
 Legal: A portion of SW-36-24-3-W5M



Landowner Circulation Area



Legend

Support



Opposition



Division: 3

Roll: 04736002/011

File: PL20200087

Printed: Dec. 7, 2020

Legal: A portion of SW-36-24-3-W5M