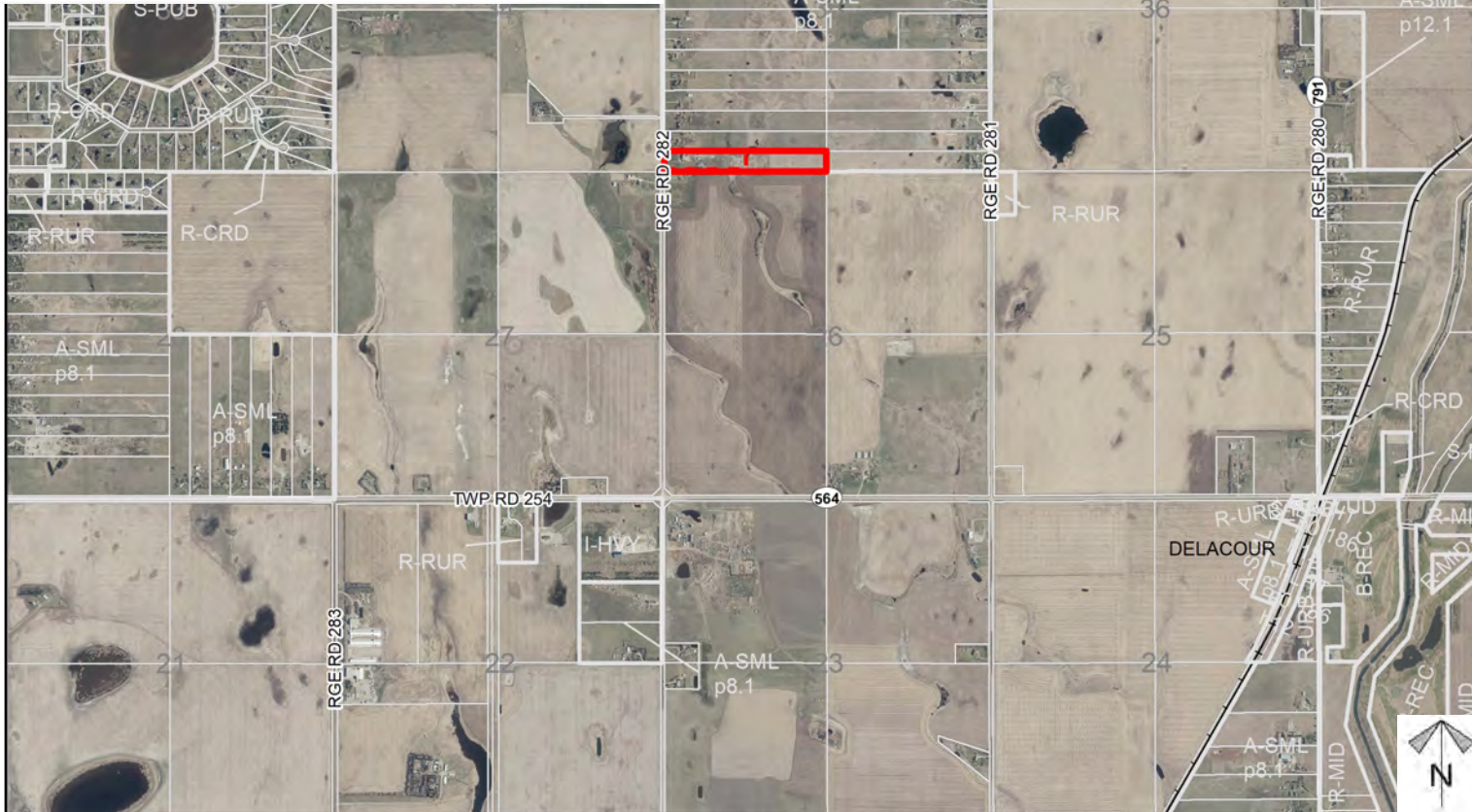


## Redesignation Proposal

Division: 5  
Roll: 05335005  
File: PL20220014  
Printed: April 26, 2022  
Legal: A portion of SW-35-  
25-28-W04M





## Development Proposal

### Redesignation Proposal

To redesignate the subject lands from Agricultural, Small Parcel District (A-SML p. 8.1) to Residential, Rural District (R-RUR p. 4.0) to allow for the future subdivision of one  $\pm 4.04$  ha ( $\pm 9.98$  acre) parcel, leaving a  $\pm 4.04$  ha ( $\pm 9.98$  acre) remainder.

RGE RD 282

A-SML p.8.1 to R-RUR p.4.0



Division: 5  
Roll: 05335005  
File: PL20220014  
Printed: April 26, 2022  
Legal: A portion of SW-35-  
25-28-W04M





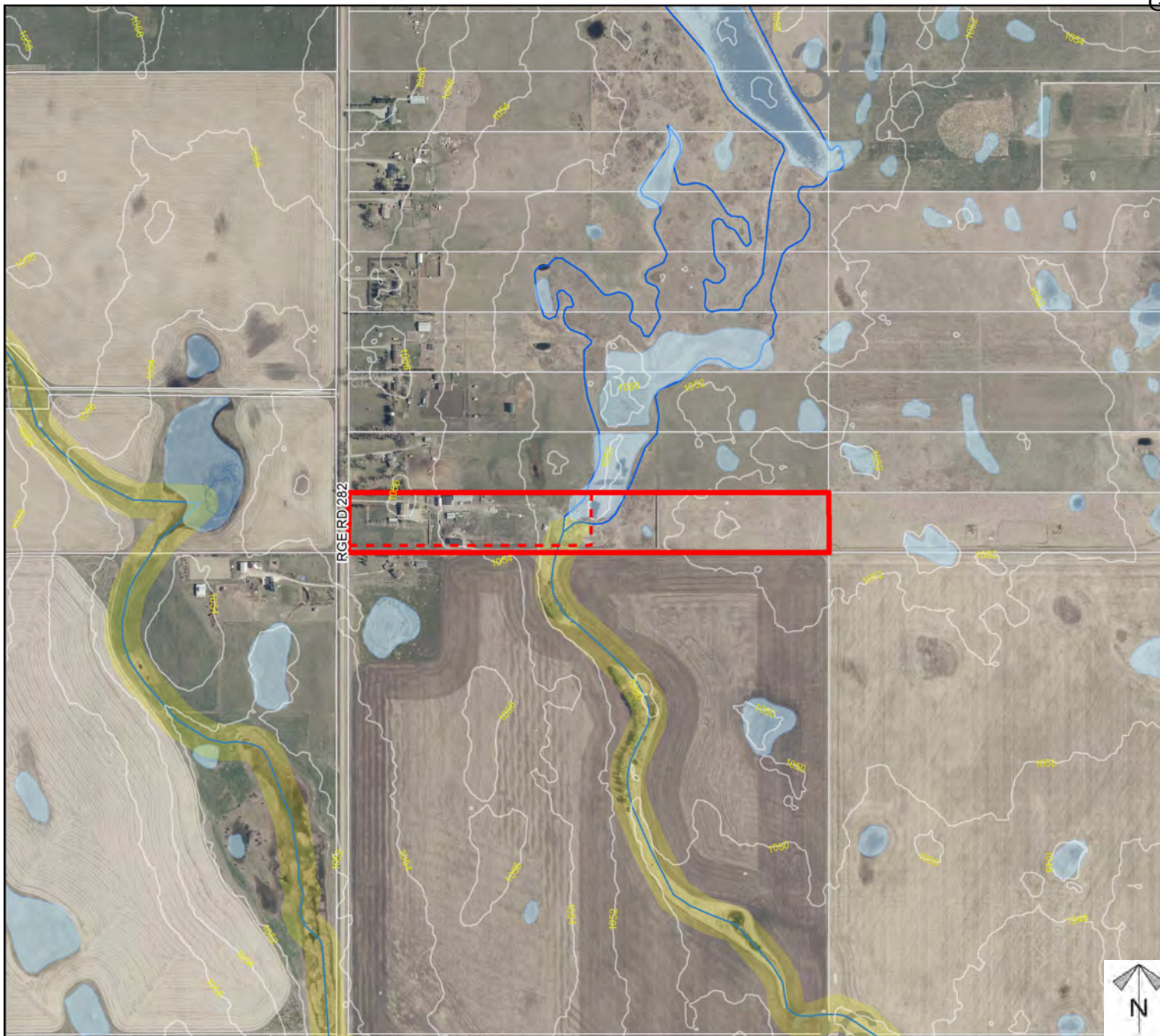
## Environmental

### Redesignation Proposal

To redesignate the subject lands from Agricultural, Small Parcel District (A-SML p. 8.1) to Residential, Rural District (R-RUR p. 4.0) to allow for the future subdivision of one  $\pm 4.04$  ha ( $\pm 9.98$  acre) parcel, leaving a  $\pm 4.04$  ha ( $\pm 9.98$  acre) remainder.

-  Subject Lands
-  Contour - 2 meters
-  Riparian Setbacks
-  Alberta Wetland Inventory
-  Surface Water

Division: 5  
Roll: 05335005  
File: PL20220014  
Printed: April 26, 2022  
Legal: A portion of SW-35-25-28-W04M



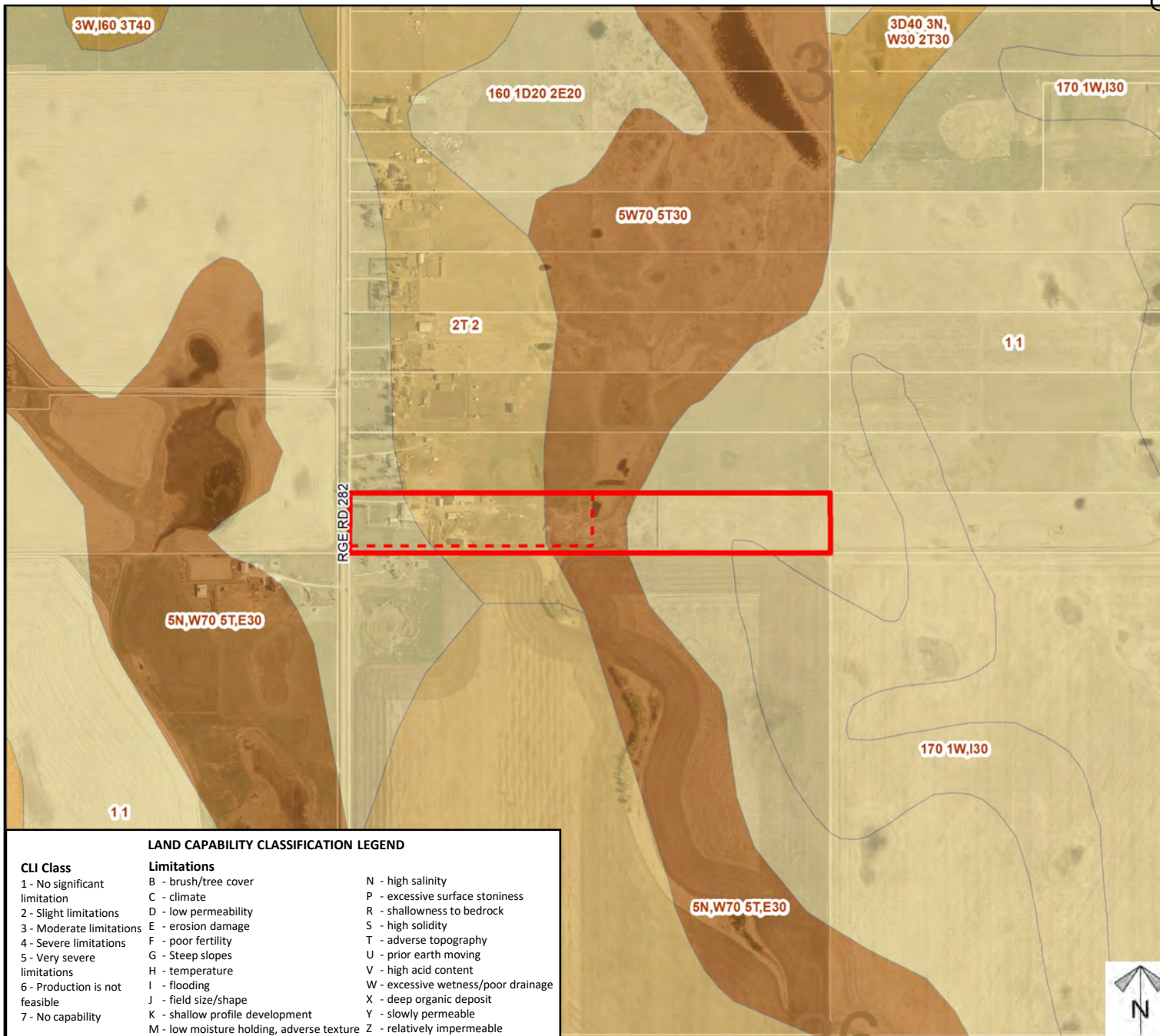




## Soil Classifications

### Redesignation Proposal

To redesignate the subject lands from Agricultural, Small Parcel District (A-SML p. 8.1) to Residential, Rural District (R-RUR p. 4.0) to allow for the future subdivision of one  $\pm 4.04$  ha ( $\pm 9.98$  acre) parcel, leaving a  $\pm 4.04$  ha ( $\pm 9.98$  acre) remainder.



#### LAND CAPABILITY CLASSIFICATION LEGEND

CLI Class	Limitations		
1 - No significant limitation	B - brush/tree cover	N - high salinity	
2 - Slight limitations	C - climate	P - excessive surface stoniness	
3 - Moderate limitations	D - low permeability	R - shallowness to bedrock	
4 - Severe limitations	E - erosion damage	S - high solidity	
5 - Very severe limitations	F - poor fertility	T - adverse topography	
6 - Production is not feasible	G - Steep slopes	U - prior earth moving	
7 - No capability	H - temperature	V - high acid content	
	I - flooding	W - excessive wetness/poor drainage	
	J - field size/shape	X - deep organic deposit	
	K - shallow profile development	Y - slowly permeable	
	M - low moisture holding, adverse texture	Z - relatively impermeable	

Division: 5  
Roll: 05335005  
File: PL20220014  
Printed: April 26, 2022  
Legal: A portion of SW-35-25-28-W04M

## Redesignation Proposal

### Legend



*Plan numbers that include letters were registered before 1973 and do not reference a year.*