

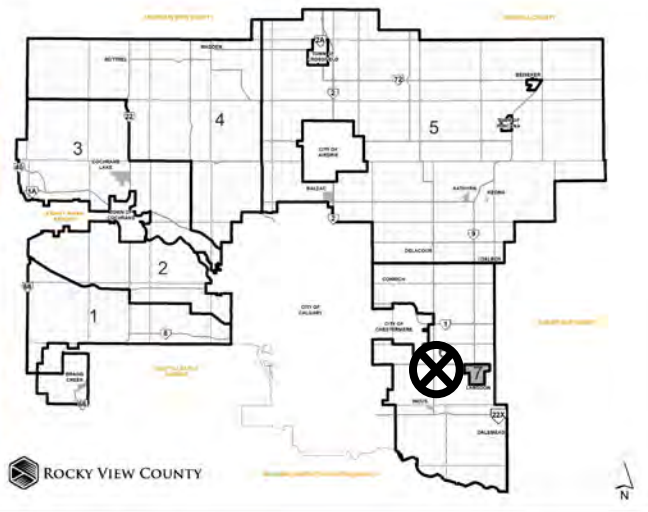


## Location & Context

### Redesignation Proposal

To redesignate the subject parcel (±63.6 hectares (±157.16 acres)) from Agriculture, General District (A-GEN) to Special, Future Urban Development District (S-FUD) to accommodate the future development of a parking area for large earth moving equipment.

Division: 6  
Roll: 03219003  
File: PL20200191  
Printed: April 1, 2022  
Legal: N-19-23-27-W4M





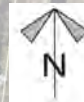
## Development Proposal

### Redesignation Proposal

To redesignate the subject parcel ( $\pm 63.6$  hectares ( $\pm 157.16$  acres)) from Agriculture, General District (A-GEN) to Special, Future Urban Development District (S-FUD) to accommodate the future development of a parking area for large earth moving equipment.

A-GEN  $\rightarrow$  S-FUD  
 $\pm 63.6$  ha ( $\pm 157.16$  ac)

Division: 6  
Roll: 03219003  
File: PL20200191  
Printed: April 1, 2022  
Legal: N-19-23-27-W4M







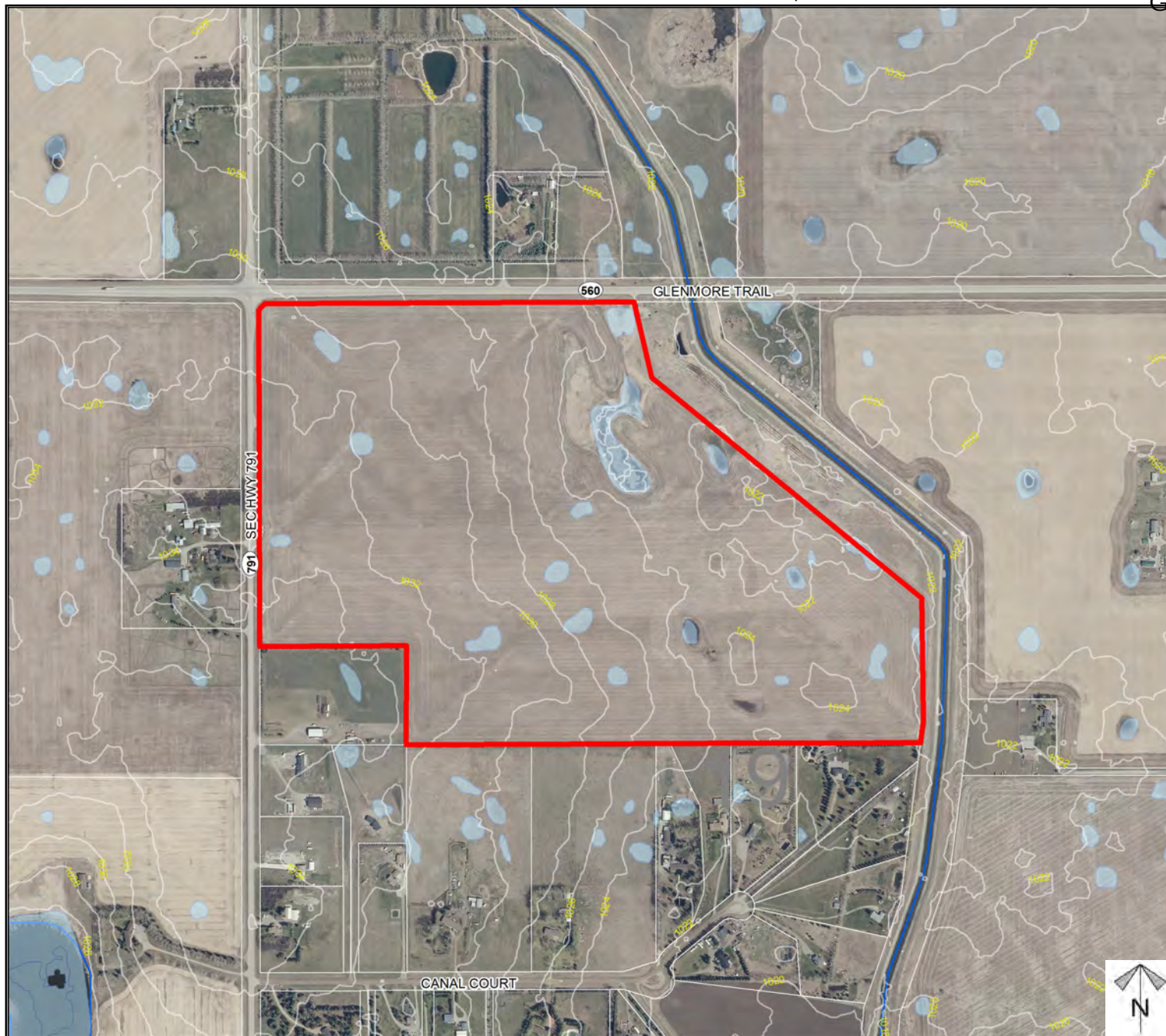
## Environmental

### Redesignation Proposal

To redesignate the subject parcel ( $\pm 63.6$  hectares ( $\pm 157.16$  acres)) from Agriculture, General District (A-GEN) to Special, Future Urban Development District (S-FUD) to accommodate the future development of a parking area for large earth moving equipment.

-  Subject Lands
-  Contour - 2 meters
-  Riparian Setbacks
-  Alberta Wetland Inventory
-  Surface Water

Division: 6  
Roll: 03219003  
File: PL20200191  
Printed: April 1, 2022  
Legal: N-19-23-27-W4M



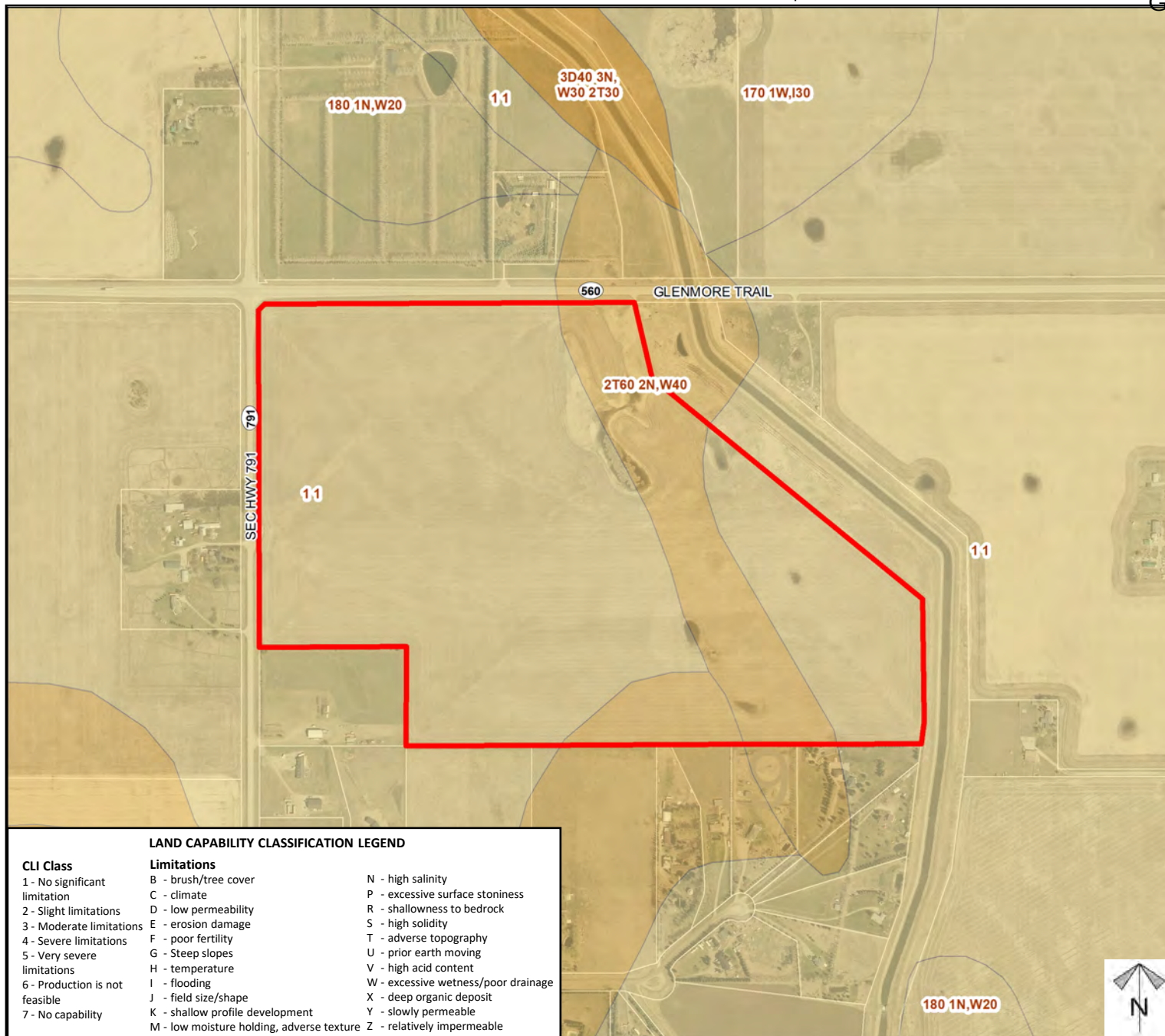




## Soil Classifications

### Redesignation Proposal

To redesignate the subject parcel (±63.6 hectares (±157.16 acres)) from Agriculture, General District (A-GEN) to Special, Future Urban Development District (S-FUD) to accommodate the future development of a parking area for large earth moving equipment.



#### LAND CAPABILITY CLASSIFICATION LEGEND

##### CLI Class

- 1 - No significant limitation
- 2 - Slight limitations
- 3 - Moderate limitations
- 4 - Severe limitations
- 5 - Very severe limitations
- 6 - Production is not feasible
- 7 - No capability

##### Limitations

- B - brush/tree cover
- C - climate
- D - low permeability
- E - erosion damage
- F - poor fertility
- G - Steep slopes
- H - temperature
- I - flooding
- J - field size/shape
- K - shallow profile development
- M - low moisture holding, adverse texture
- N - high salinity
- P - excessive surface stoniness
- R - shallowness to bedrock
- S - high solidity
- T - adverse topography
- U - prior earth moving
- V - high acid content
- W - excessive wetness/poor drainage
- X - deep organic deposit
- Y - slowly permeable
- Z - relatively impermeable

Division: 6  
Roll: 03219003  
File: PL20200191  
Printed: April 1, 2022  
Legal: N-19-23-27-W4M



## Landowner Circulation Area

### Redesignation Proposal

To redesignate the subject parcel ( $\pm 63.6$  hectares ( $\pm 157.16$  acres)) from Agriculture, General District (A-GEN) to Special, Future Urban Development District (S-FUD) to accommodate the future development of a parking area for large earth moving equipment.

### Legend

Support

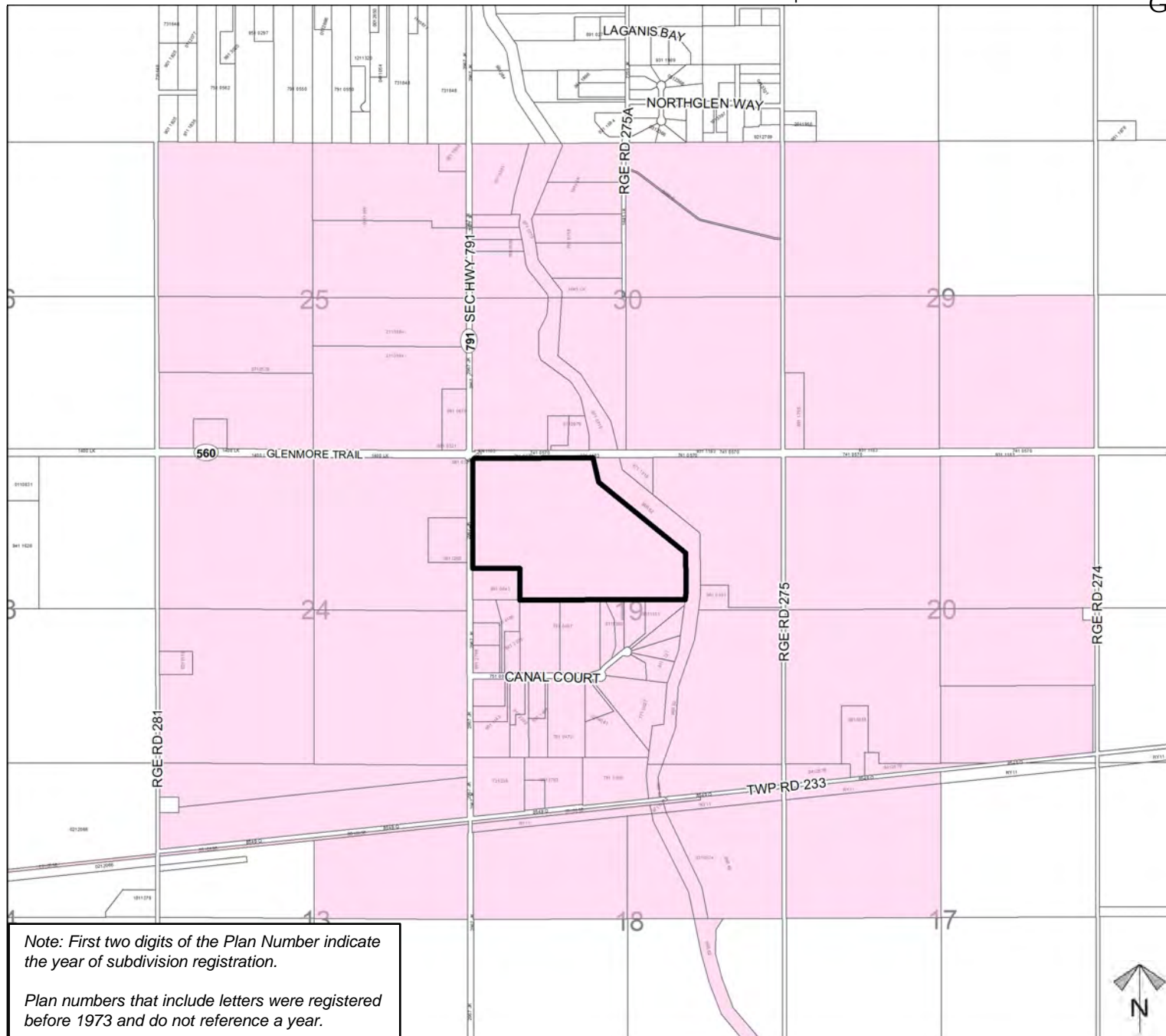


Opposition



Note: First two digits of the Plan Number indicate the year of subdivision registration.

Plan numbers that include letters were registered before 1973 and do not reference a year.



Division: 6  
Roll: 03219003  
File: PL20200191  
Printed: April 1, 2022  
Legal: N-19-23-27-W4M