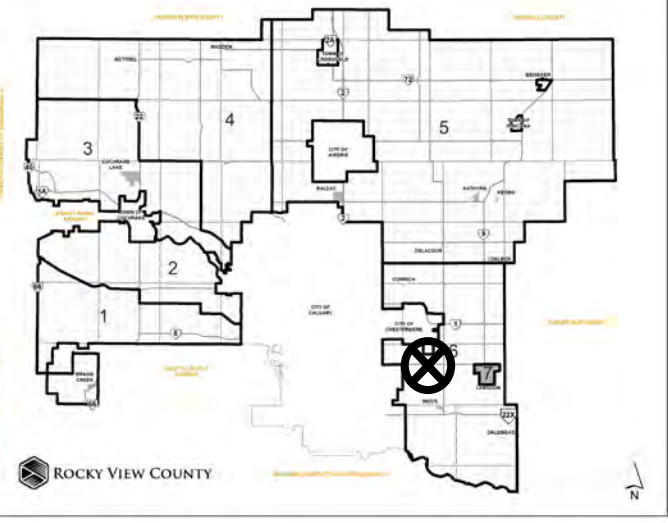




Location & Context

Redesignation Proposal

To redesignate the subject lands from Agricultural, Small Parcel District (A-SML p8.1) to Business, Live-Work District (B-LWK) to accommodate future business uses on the lands.



Division: 6
Roll: 03323013
File: PL20210161
Printed: October 8, 2021
Legal: Block:1 Plan:7311129
within NW-23-23-28-W04M



Development Proposal

Redesignation Proposal

To redesignate the subject lands from Agricultural, Small Parcel District (A-SML p8.1) to Business, Live-Work District (B-LWK) to accommodate future business uses on the lands.

A-SML p8.1 → B-LWK
±7.82 ha
(±19.33 ac)

RGE RD 282

560 GLENMORE TRAIL



Division: 6
Roll: 03323013
File: PL20210161
Printed: October 8, 2021
Legal: Block: 1 Plan: 7311129
within NW-23-23-28-W04M



Janet Area Structure Plan

Redesignation Proposal

To redesignate the subject lands from Agricultural, Small Parcel District (A-SML p8.1) to Business, Live-Work District (B-LWK) to accommodate future business uses on the lands.

Division: 6
Roll: 03323013
File: PL20210161
Printed: October 8, 2021
Legal: Block: 1 Plan: 7311129
within NW-23-23-28-W04M



Environmental

Redesignation Proposal

To redesignate the subject lands from Agricultural, Small Parcel District (A-SML p8.1) to Business, Live-Work District (B-LWK) to accommodate future business uses on the lands.



- Subject Lands
- Contour - 2 meters
- Riparian Setbacks
- Alberta Wetland Inventory
- Surface Water

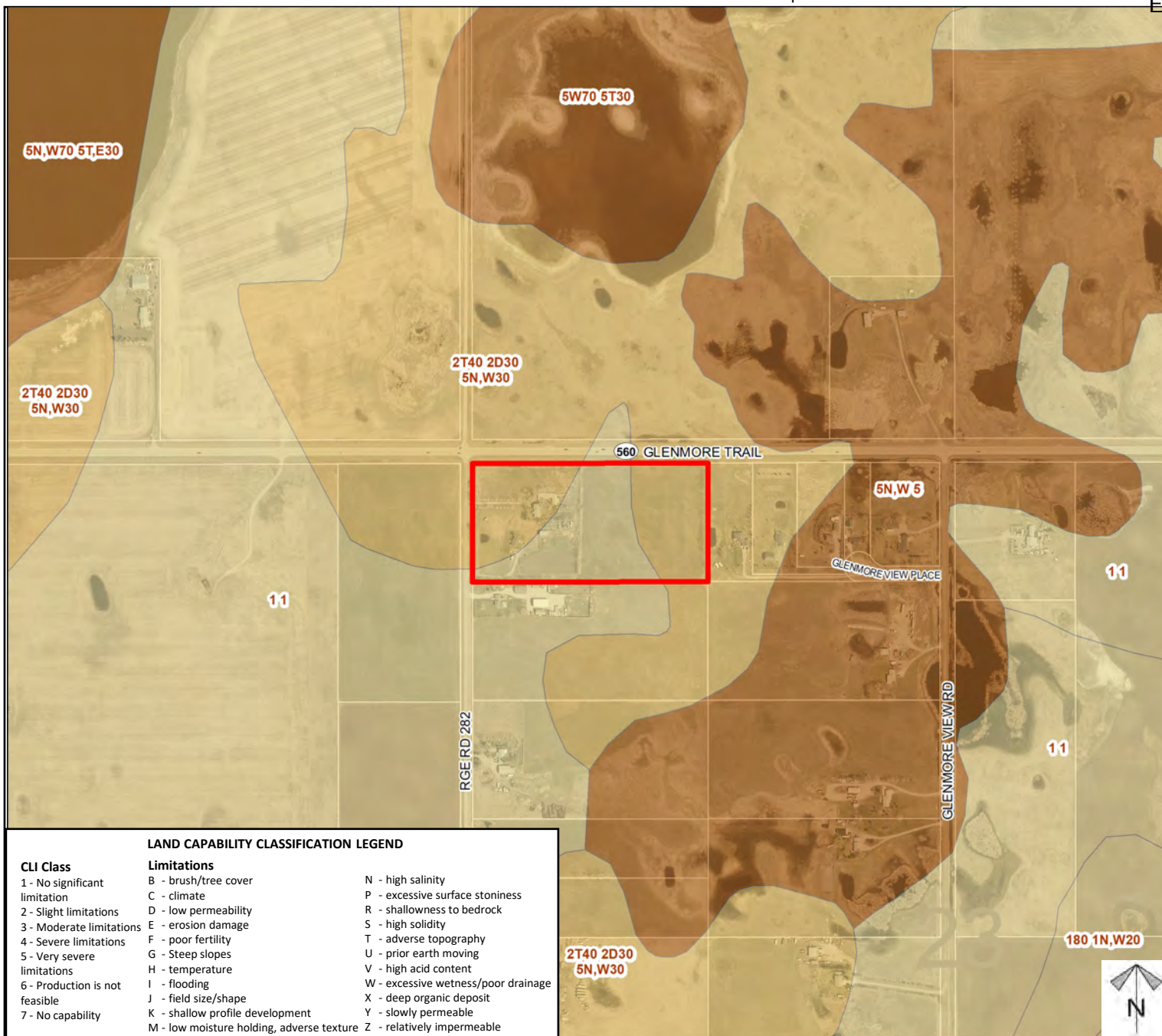
Division: 6
 Roll: 03323013
 File: PL20210161
 Printed: October 8, 2021
 Legal: Block:1 Plan:7311129
 within NW-23-23-28-W04M



Soil Classifications

Redesignation Proposal

To redesignate the subject lands from Agricultural, Small Parcel District (A-SML p8.1) to Business, Live-Work District (B-LWK) to accommodate future business uses on the lands.



Division: 6

Roll: 03323013

File: PL20210161

Printed: October 8, 2021

Legal: Block: 1 Plan: 7311129
within NW-23-23-28-W04M



Landowner Circulation Area

Redesignation Proposal

To redesignate the subject lands from Agricultural, Small Parcel District (A-SML p8.1) to Business, Live-Work District (B-LWK) to accommodate future business uses on the lands.

Legend

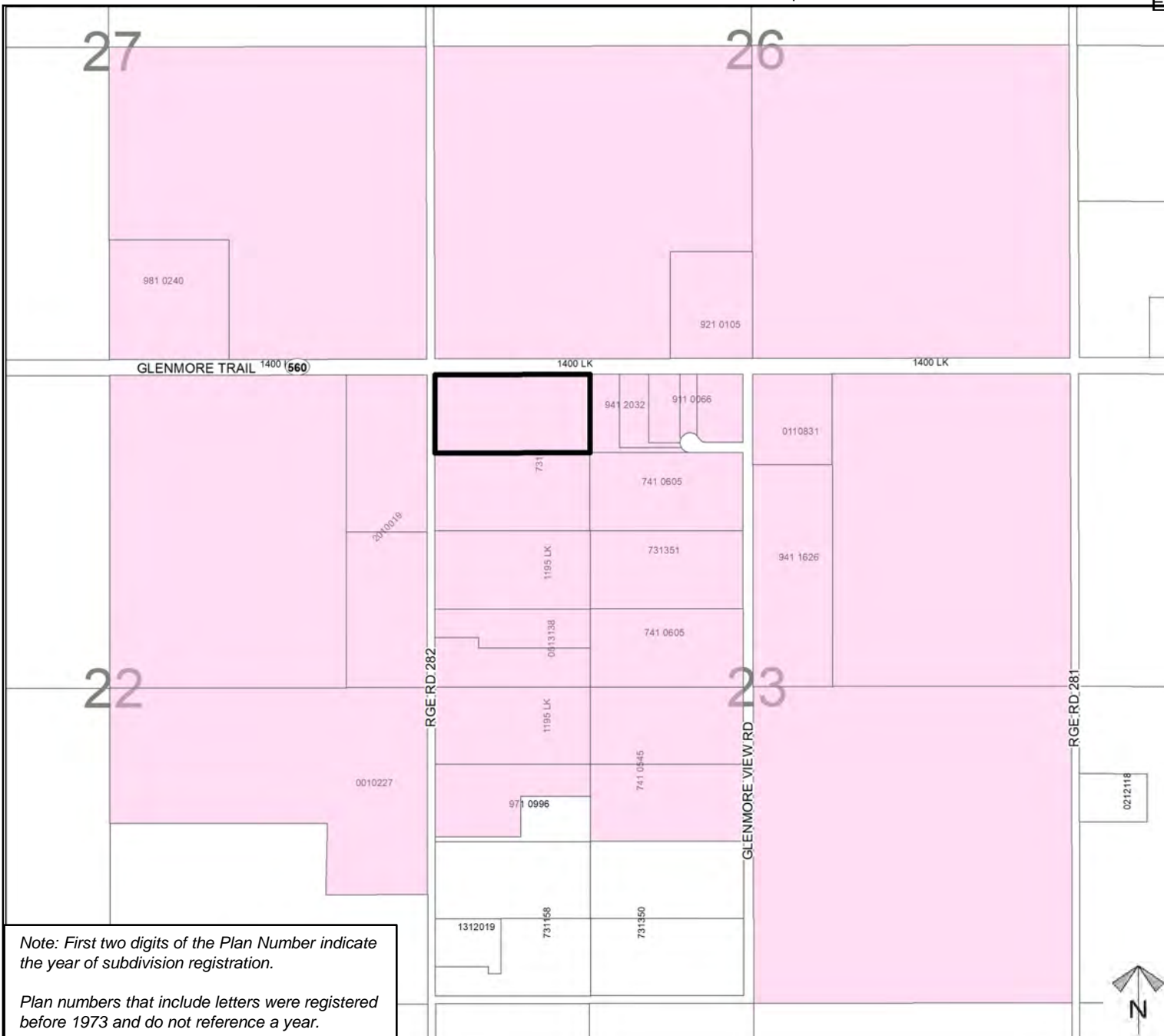
Support



Not Support



Division: 6
Roll: 03323013
File: PL20210161
Printed: October 8, 2021
Legal: Block: 1 Plan: 7311129
within NW-23-23-28-W04M



Note: First two digits of the Plan Number indicate the year of subdivision registration.

Plan numbers that include letters were registered before 1973 and do not reference a year.