

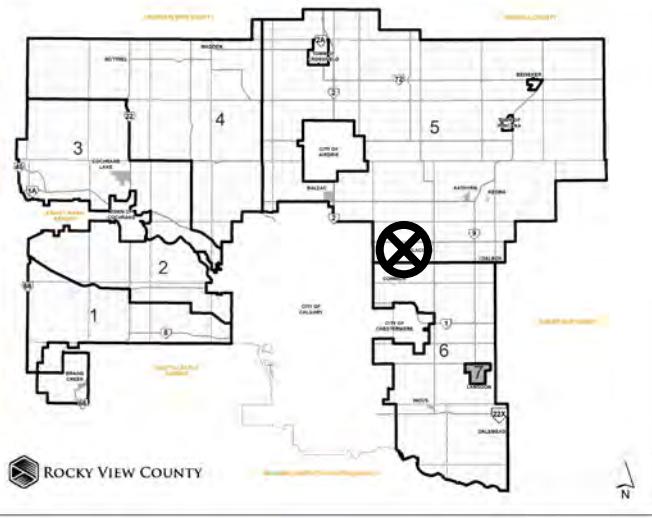


Location & Context

Redesignation Proposal

To redesignate the subject lands from Agriculture General District (A-GEN) to Business Live Work District (B-LWK) to accommodate a truck storage facility.

Division: 6
Roll: 05308008
File: PL20210100
Printed: May 28, 2021
Legal: A portion of NE-08-25-28-W04M



Development Proposal

Redesignation Proposal

To redesignate the subject lands from Agriculture General District (A-GEN) to Business Live Work District (B-LWK) to accommodate a truck storage facility.

A-GEN → B-LWK
± 9.32 ha
(± 23.03 ac)

TWP RD 252

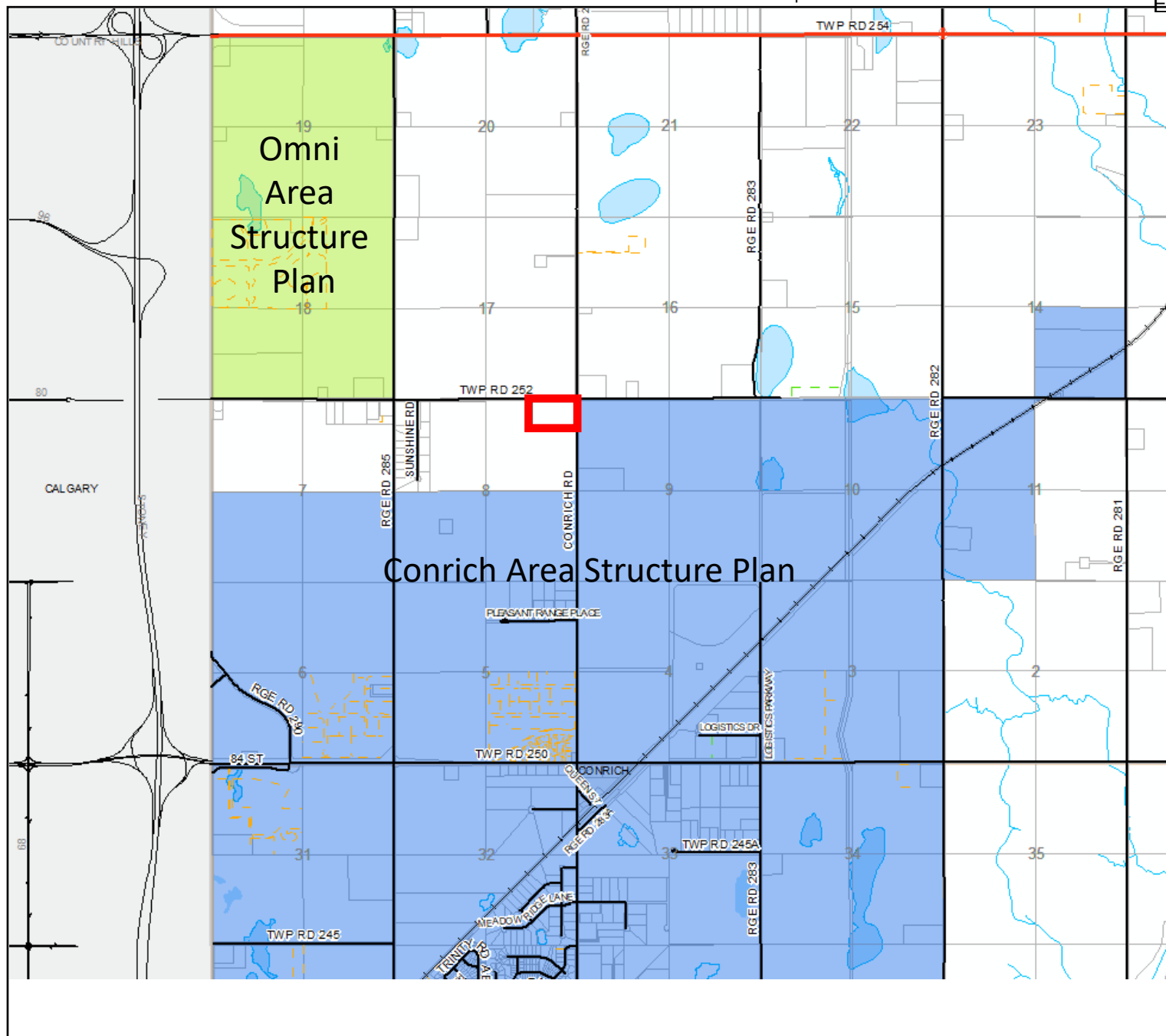
CONRICH RD

Division: 6
Roll: 05308008
File: PL20210100
Printed: May 28, 2021
Legal: A portion of NE-08-25-28-W04M



To redesignate the subject lands from Agriculture General District (A-GEN) to Business Live Work District (B-LWK) to accommodate a truck storage facility.

Division: 6
Roll: 05308008
File: PL20210100
Printed: May 28, 2021
Legal: A portion of NE-08-25-
28-W04M



Environmental

Redesignation Proposal

To redesignate the subject lands from Agriculture General District (A-GEN) to Business Live Work District (B-LWK) to accommodate a truck storage facility.



-  Subject Lands
-  Contour - 2 meters
-  Riparian Setbacks
-  Alberta Wetland Inventory
-  Surface Water

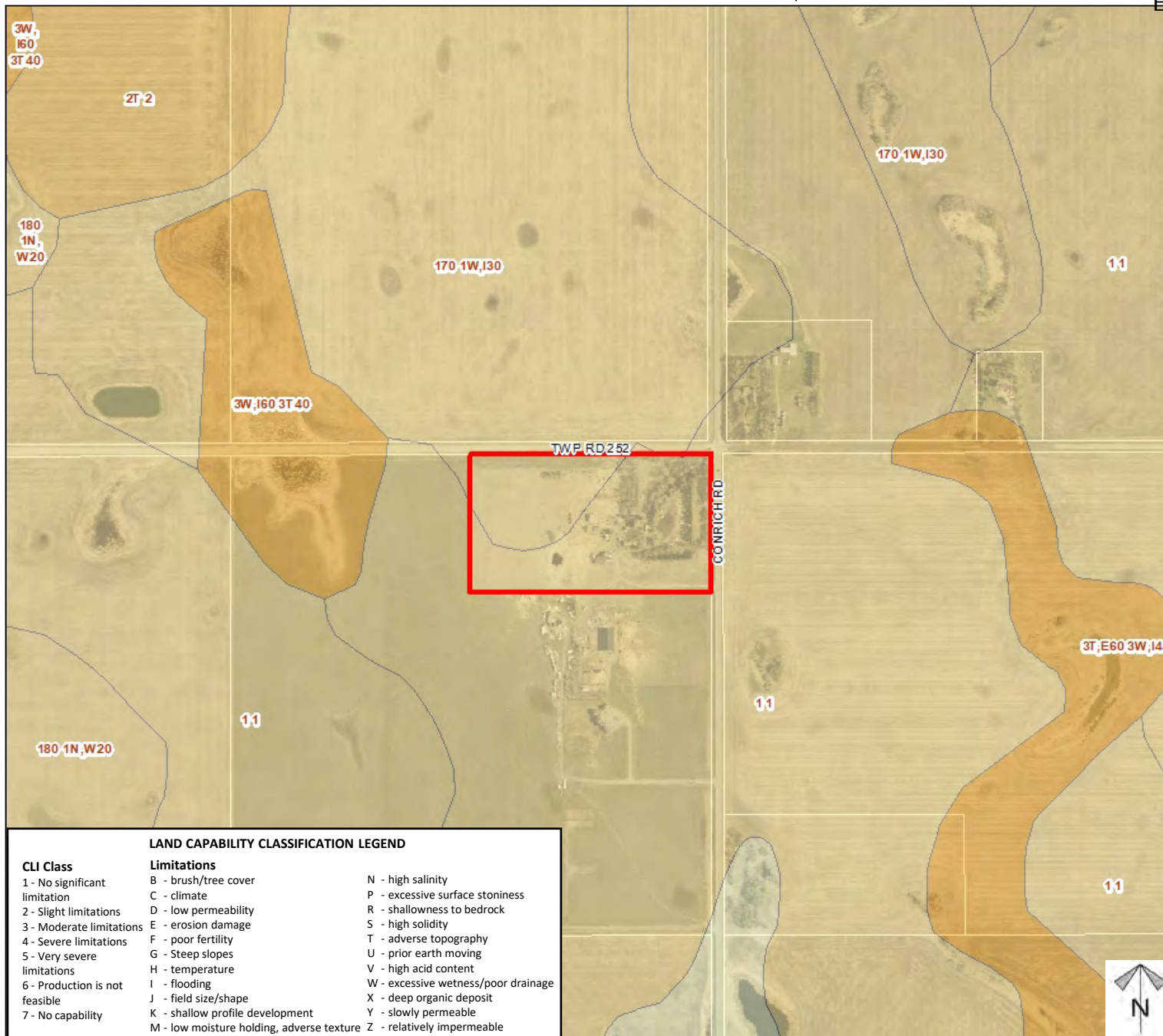
Division: 6
 Roll: 05308008
 File: PL20210100
 Printed: May 28, 2021
 Legal: A portion of NE-08-25-28-W04M



Soil Classifications

Redesignation Proposal

To redesignate the subject lands from Agriculture General District (A-GEN) to Business Live Work District (B-LWK) to accommodate a truck storage facility.



Division: 6
Roll: 05308008
File: PL20210100
Printed: May 28, 2021
Legal: A portion of NE-08-25-28-W04M



Landowner Circulation Area

Redesignation Proposal

To redesignate the subject lands from Agriculture General District (A-GEN) to Business Live Work District (B-LWK) to accommodate a truck storage facility.

Legend

Support

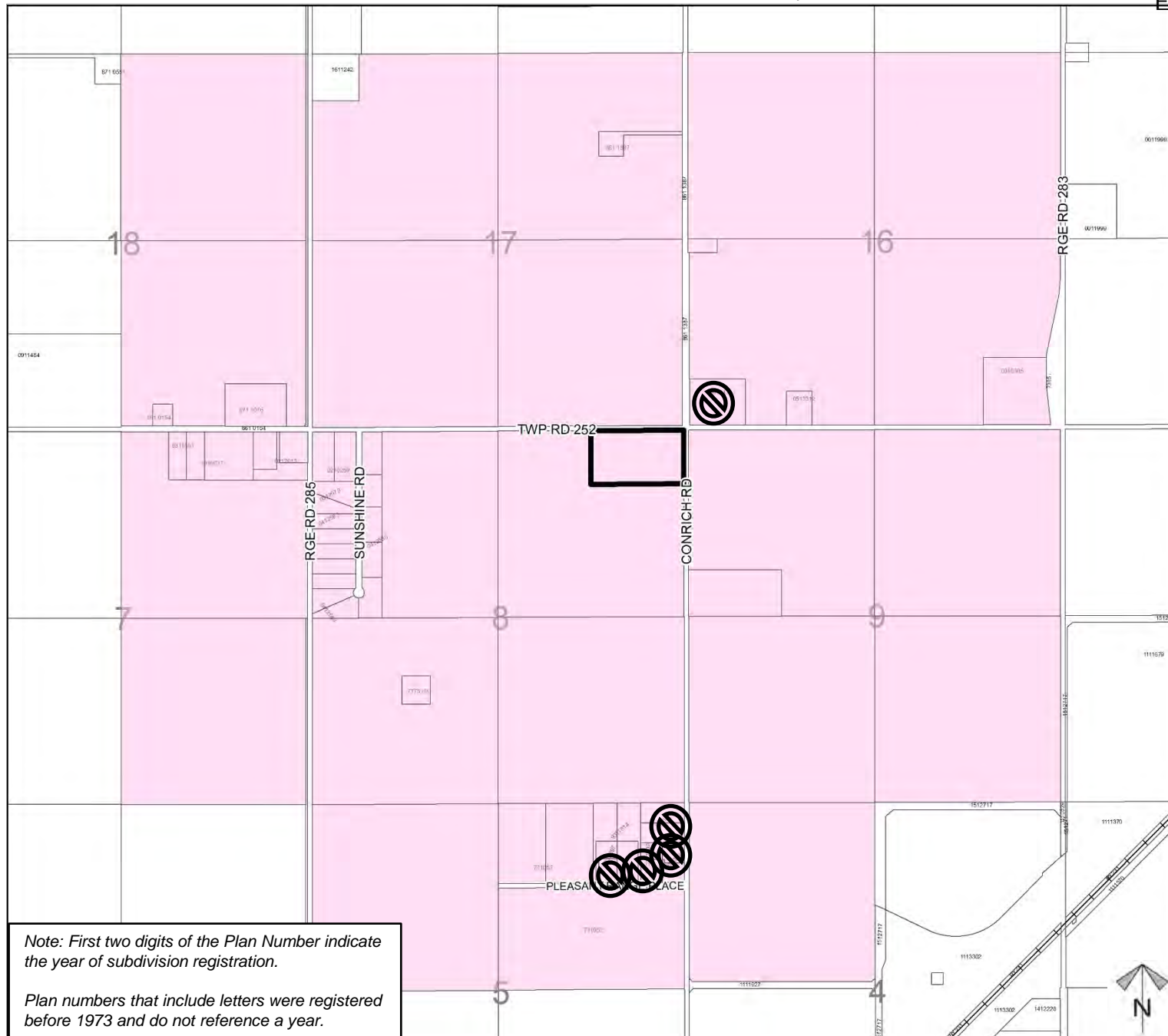


Not Support



Note: First two digits of the Plan Number indicate the year of subdivision registration.

Plan numbers that include letters were registered before 1973 and do not reference a year.



Division: 6
Roll: 05308008
File: PL20210100
Printed: May 28, 2021
Legal: A portion of NE-08-25-28-W04M