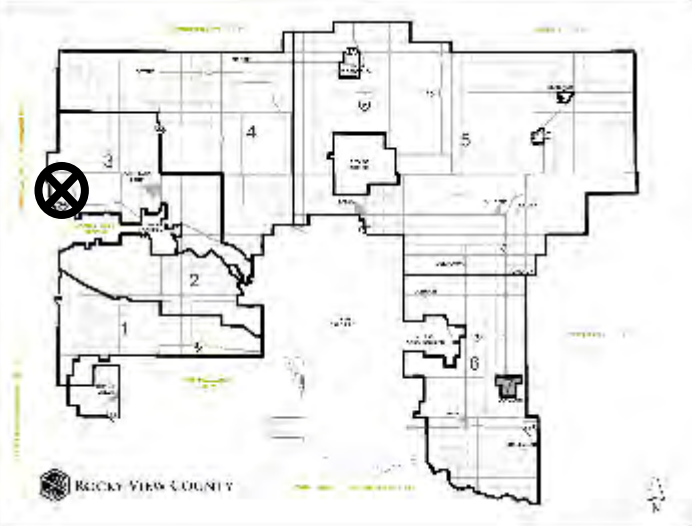


Location & Context

Redesignation Proposal

To redesignate the subject lands from Agricultural, General District (A-GEN) to Agricultural, Small Parcel District (A-SML) in order to facilitate the creation of a ± 71.22 acre parcel with a ± 67.36 acre remainder.

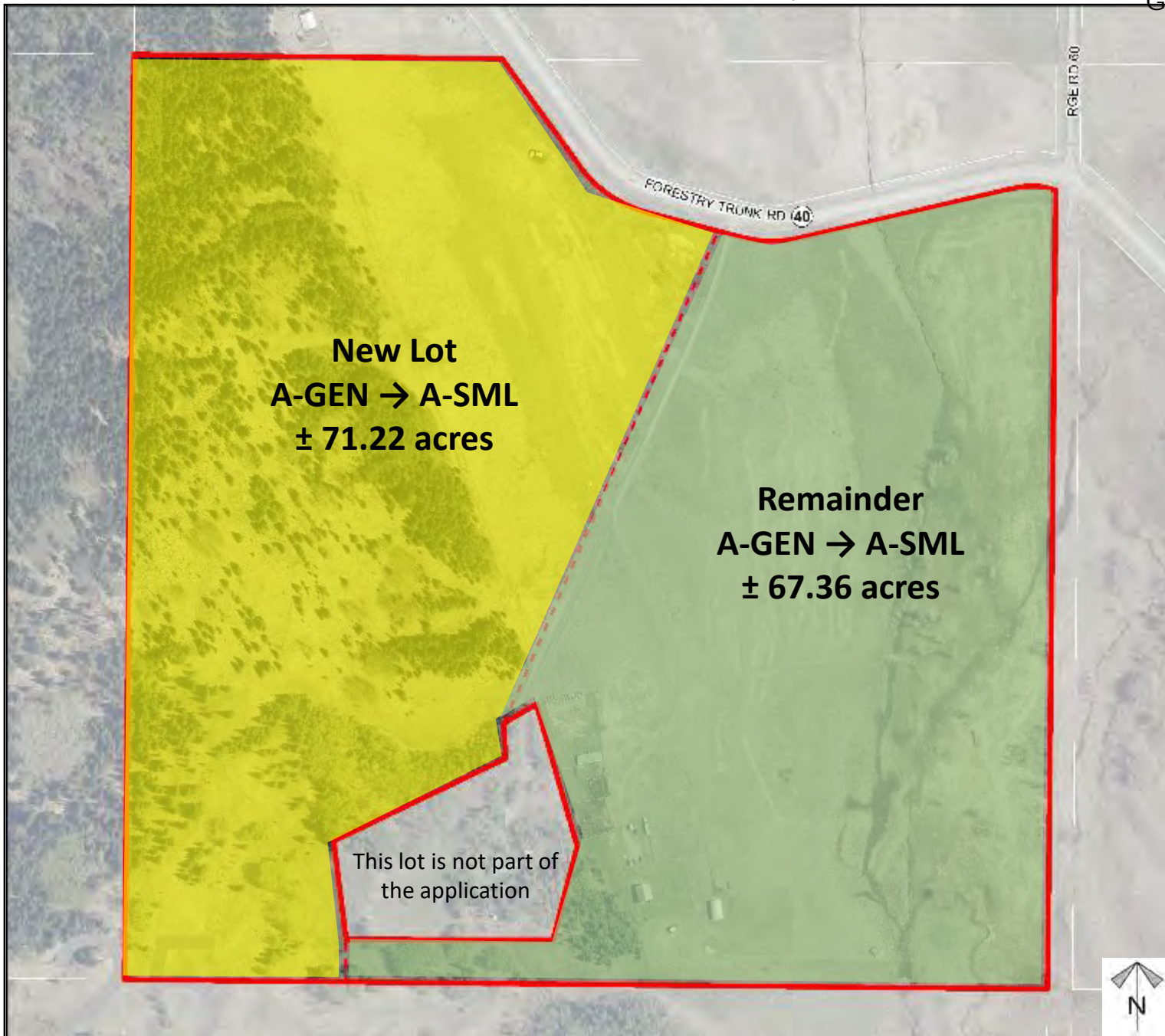
Division: 3
Roll: 10025001
File: PL20210157
Printed: October 4, 2021
Legal: A portion of NE-25-26-06-W05M



Development Proposal

Redesignation Proposal

To redesignate the subject lands from Agricultural, General District (A-GEN) to Agricultural, Small Parcel District (A-SML) in order to facilitate the creation of a ± 71.22 acre parcel with a ± 67.36 acre remainder.



Division: 3
Roll: 10025001
File: PL20210157
Printed: October 4, 2021
Legal: A portion of NE-25-26-06-W05M

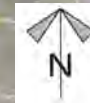
Environmental

Redesignation Proposal

To redesignate the subject lands from Agricultural, General District (A-GEN) to Agricultural, Small Parcel District (A-SML) in order to facilitate the creation of a ± 71.22 acre parcel with a ± 67.36 acre remainder.

-  Subject Lands
-  Contour - 2 meters
-  Riparian Setbacks
-  Alberta Wetland Inventory
-  Surface Water

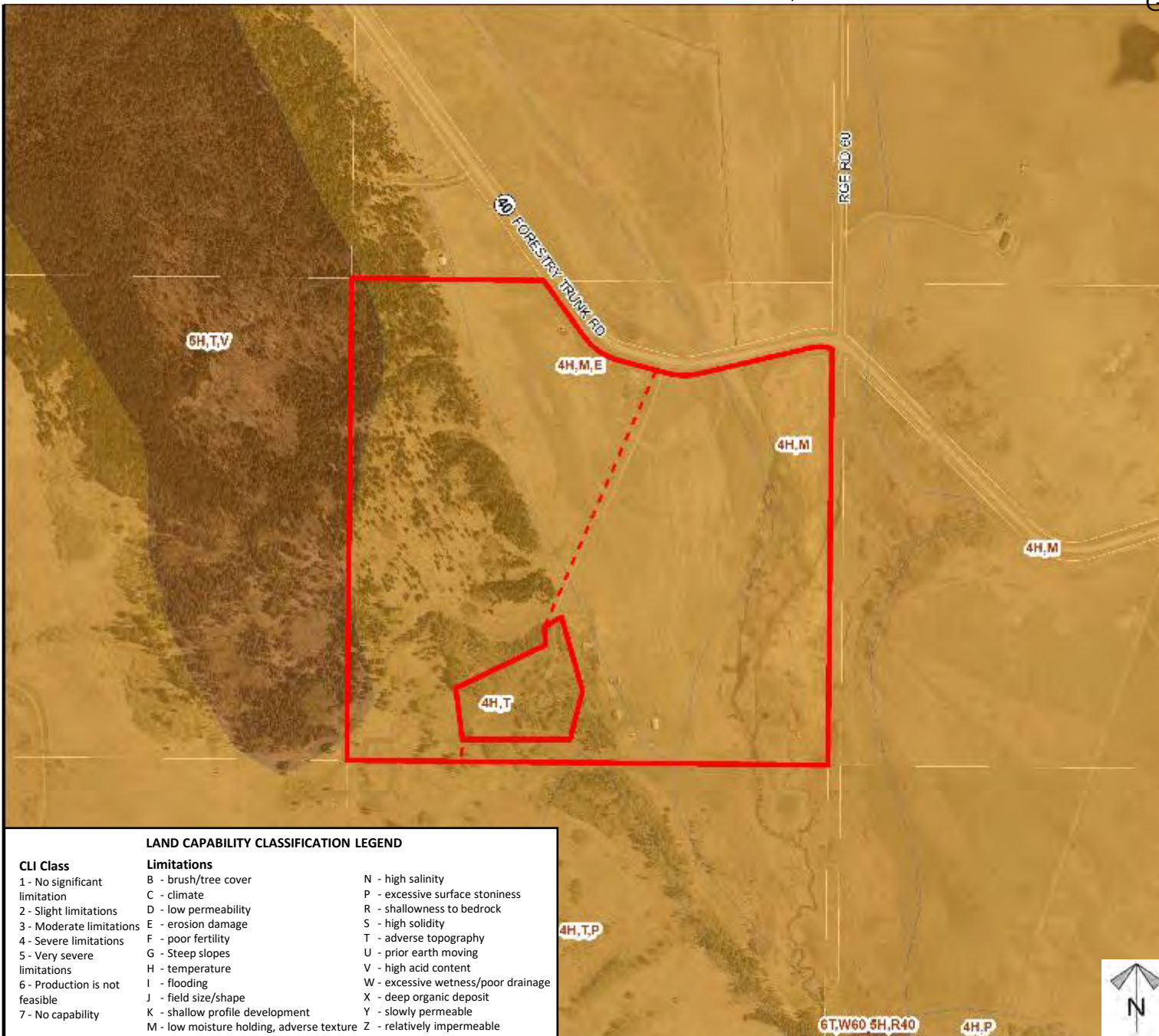
Division: 3
Roll: 10025001
File: PL20210157
Printed: October 4, 2021
Legal: A portion of NE-25-26-06-W05M



Soil Classifications

Redesignation Proposal

To redesignate the subject lands from Agricultural, General District (A-GEN) to Agricultural, Small Parcel District (A-SML) in order to facilitate the creation of a ± 71.22 acre parcel with a ± 67.36 acre remainder.



LAND CAPABILITY CLASSIFICATION LEGEND

CLI Class	Limitations	
1 - No significant limitation	B - brush/tree cover	N - high salinity
2 - Slight limitations	C - climate	P - excessive surface stoniness
3 - Moderate limitations	D - low permeability	R - shallowness to bedrock
4 - Severe limitations	E - erosion damage	S - high solidity
5 - Very severe limitations	F - poor fertility	T - adverse topography
6 - Production is not feasible	G - Steep slopes	U - prior earth moving
7 - No capability	H - temperature	V - high acid content
	I - flooding	W - excessive wetness/poor drainage
	J - field size/shape	X - deep organic deposit
	K - shallow profile development	Y - slowly permeable
	M - low moisture holding, adverse texture	Z - relatively impermeable



Division: 3
 Roll: 10025001
 File: PL20210157
 Printed: October 4, 2021
 Legal: A portion of NE-25-26-06-W05M

Landowner Circulation Area

Redesignation Proposal

To redesignate the subject lands from Agricultural, General District (A-GEN) to Agricultural, Small Parcel District (A-SML) in order to facilitate the creation of a ± 71.22 acre parcel with a ± 67.36 acre remainder.

Legend

Support



Not Support



Division: 3
Roll: 10025001
File: PL20210157
Printed: October 4, 2021
Legal: A portion of NE-25-26-06-W05M

