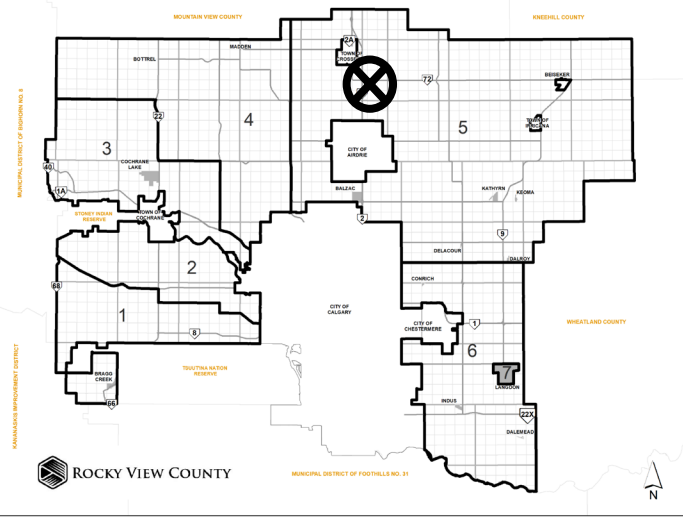


# Location & Context

## Redesignation Proposal

To redesignate the subject ±36.60 ha (±87.97) parcel from Agricultural, General District (A-GEN) to Direct Control District (DC) to allow for the future subdivision of ±17.81 ha (±44.01 acres) and the future development of a Solar Farm, Electric Vehicle Charging Station and Data Processing on that parcel; thereby leaving a ±18.79 ha (±46.43 acres) balance parcel.

Division: 5  
Roll: 08410002  
File: PL20210124  
Printed: Aug 25, 2021  
Legal: A portion of NE-10-28-29-W04M





## Development Proposal

### Redesignation Proposal

To redesignate the subject ±36.60 ha (±87.97) parcel from Agricultural, General District (A-GEN) to Direct Control District (DC) to allow for the future subdivision of ±17.81 ha (±44.01 acres) and the future development of a Solar Farm, Electric Vehicle Charging Station and Data Processing on that parcel; thereby leaving a ±18.79 ha (±46.43 acres) balance parcel.

Division: 5  
Roll: 08410002  
File: PL20210124  
Printed: Aug 25, 2021  
Legal: A portion of NE-10-28-29-W04M

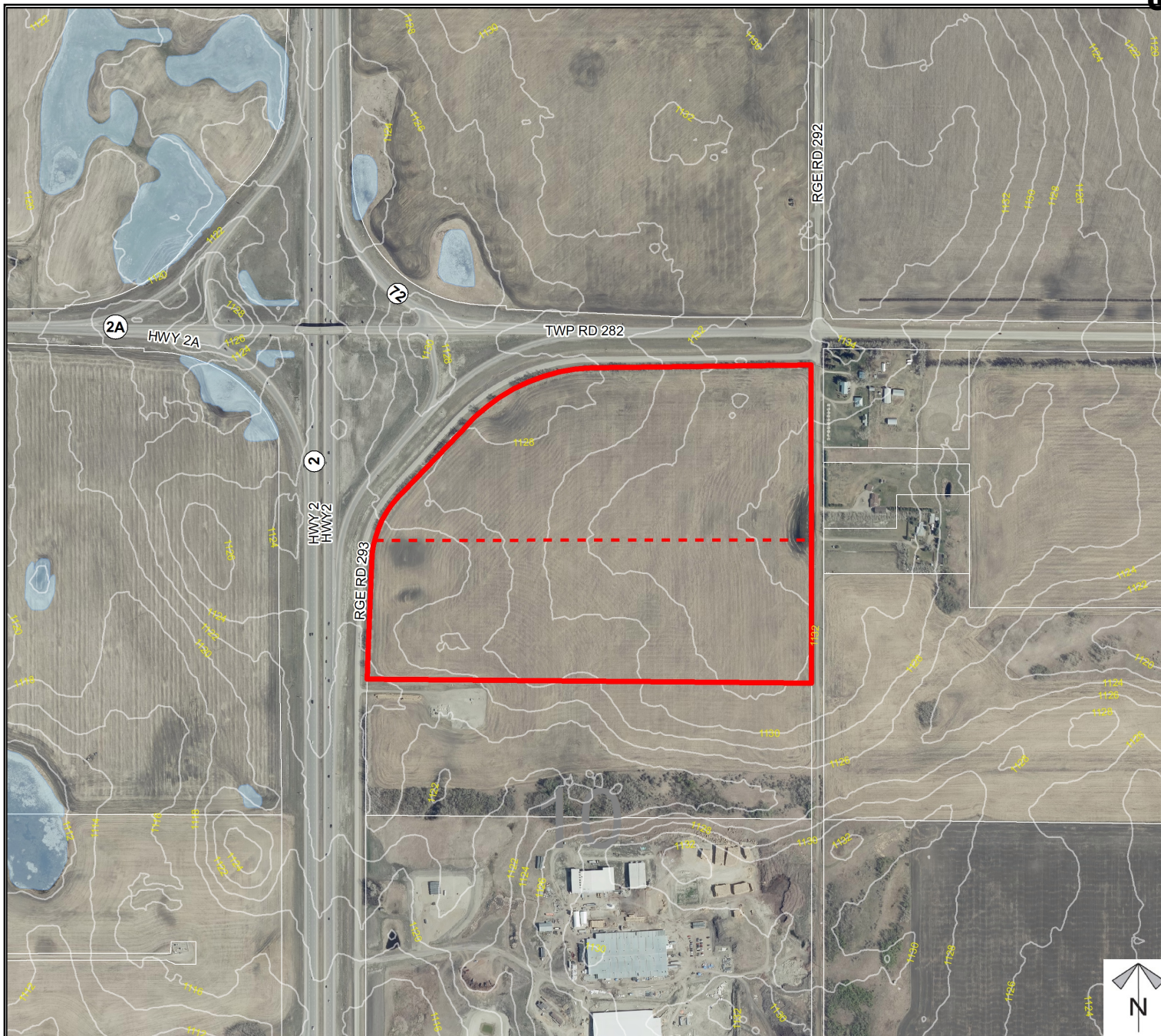
Environmental

Redesignation Proposal

To redesignate the subject ±36.60 ha (±87.97) parcel from Agricultural, General District (A-GEN) to Direct Control District (DC) to allow for the future subdivision of ±17.81 ha (±44.01 acres) and the future development of a Solar Farm, Electric Vehicle Charging Station and Data Processing on that parcel; thereby leaving a ±18.79 ha (±46.42 acres) balance

-  Subject Lands
-  Contour - 2 meters
-  Riparian Setbacks
-  Alberta Wetland Inventory
-  Surface Water

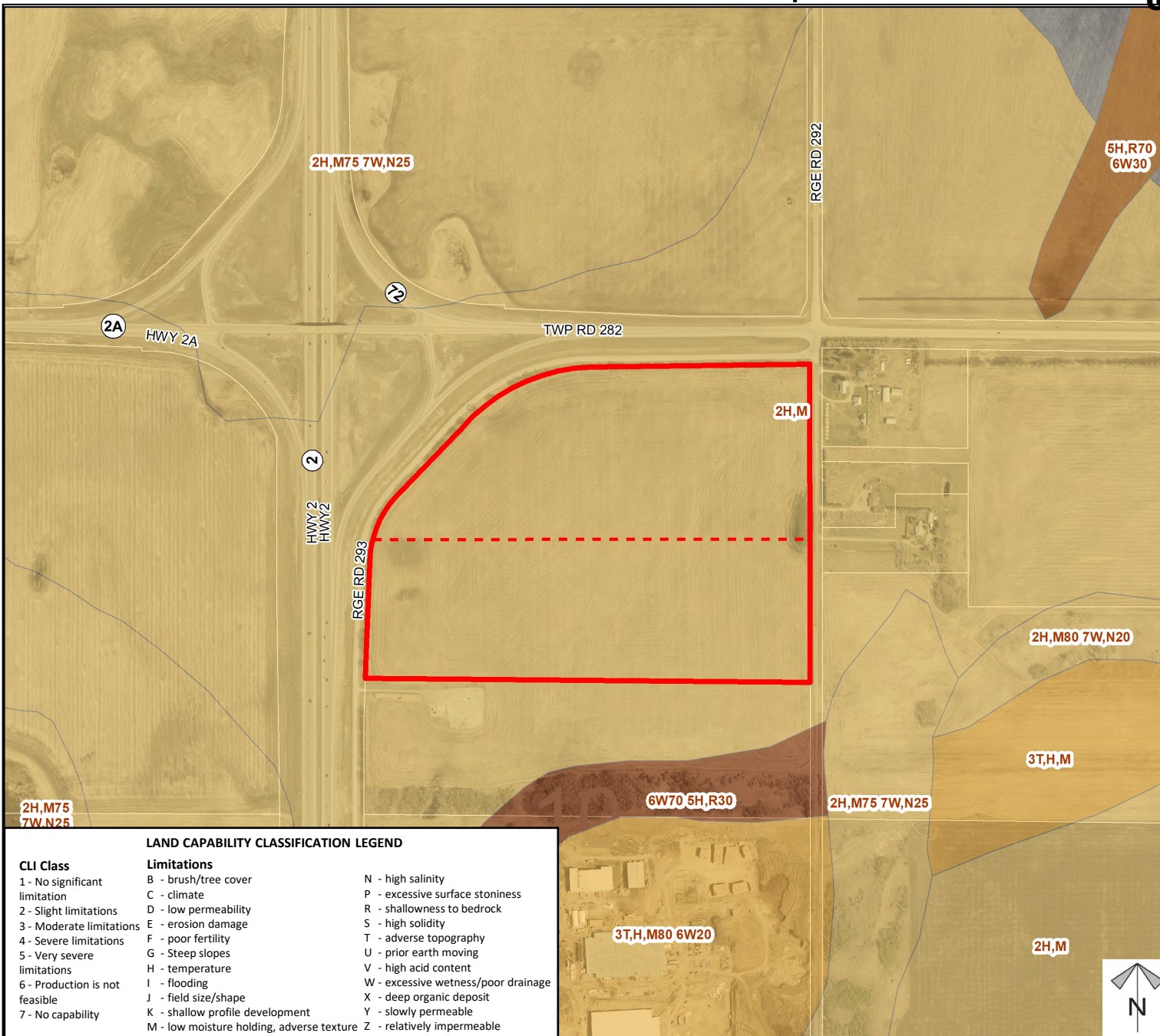
Division: 5  
 Roll: 08410002  
 File: PL20210124  
 Printed: Aug 25, 2021  
 Legal: A portion of NE-10-28-29-W04M



# Soil Classifications

## Redesignation Proposal

To redesignate the subject ±36.60 ha (±87.97) parcel from Agricultural, General District (A-GEN) to Direct Control District (DC) to allow for the future subdivision of ±17.81 ha (±44.01 acres) and the future development of a Solar Farm, Electric Vehicle Charging Station and Data Processing on that parcel; thereby leaving a ±18.79 ha (±46.43 acres) balance parcel.



**LAND CAPABILITY CLASSIFICATION LEGEND**

CLI Class	Limitations	
1 - No significant limitation	B - brush/tree cover	N - high salinity
2 - Slight limitations	C - climate	P - excessive surface stoniness
3 - Moderate limitations	D - low permeability	R - shallowness to bedrock
4 - Severe limitations	E - erosion damage	S - high solidity
5 - Very severe limitations	F - poor fertility	T - adverse topography
6 - Production is not feasible	G - Steep slopes	U - prior earth moving
7 - No capability	H - temperature	V - high acid content
	I - flooding	W - excessive wetness/poor drainage
	J - field size/shape	X - deep organic deposit
	K - shallow profile development	Y - slowly permeable
	M - low moisture holding, adverse texture	Z - relatively impermeable

Division: 5  
 Roll: 08410002  
 File: PL20210124  
 Printed: Aug 25, 2021  
 Legal: A portion of NE-10-28-29-W04M



**Landowner  
Circulation  
Area**

**Redesignation Proposal**

To redesignate the subject ±36.60 ha (±87.97) parcel from Agricultural, General District (A-GEN) to Direct Control District (DC) to allow for the future subdivision of ±17.81 ha (±44.01 acres) and the future development of a Solar Farm, Electric Vehicle Charging Station and Data Processing on that parcel; thereby leaving a ±18.79 ha (±46.43 acres) balance parcel.

**Legend**

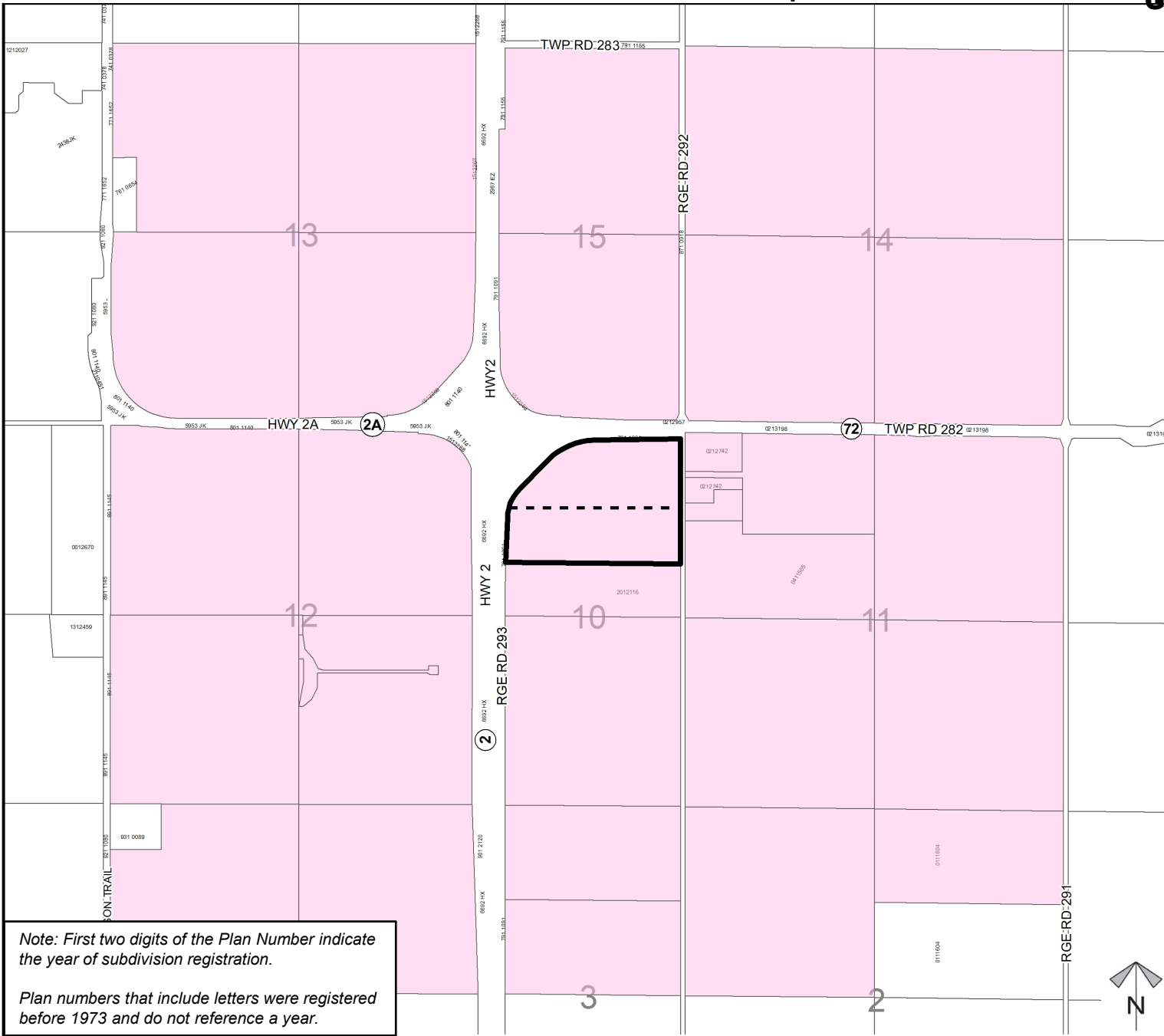
Support



Not Support



Division: 5  
Roll: 08410002  
File: PL20210124  
Printed: Aug 25, 2021  
Legal: A portion of NE-10-28-29-W04M



Note: First two digits of the Plan Number indicate the year of subdivision registration.

Plan numbers that include letters were registered before 1973 and do not reference a year.

