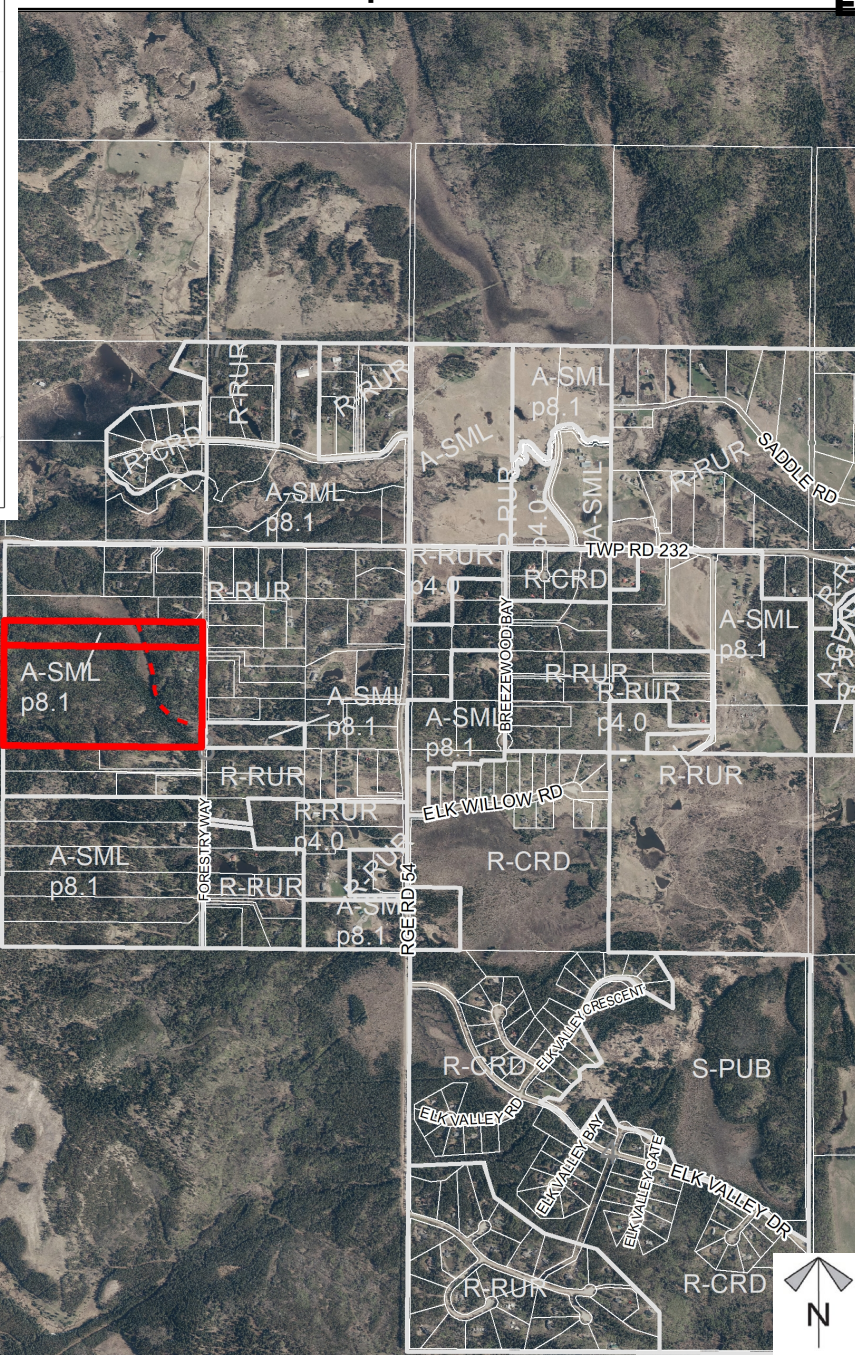
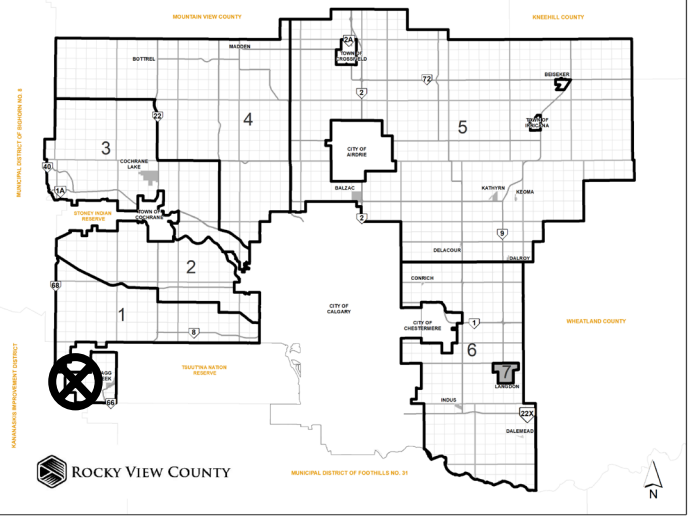


Location & Context

Redesignation Proposal

To redesignate a ± 5.62 ha (± 13.89 ac) portion of the subject lands from Agricultural, General District (A-GEN) to Agricultural, Small District (A-SML p 8.1) and a ± 5.52 ha (± 13.64 ac) portion of the subject lands from Agricultural, Small District (A-SML p 8.1) to Agricultural, General District (A-GEN) in order to facilitate a Boundary Adjustment.

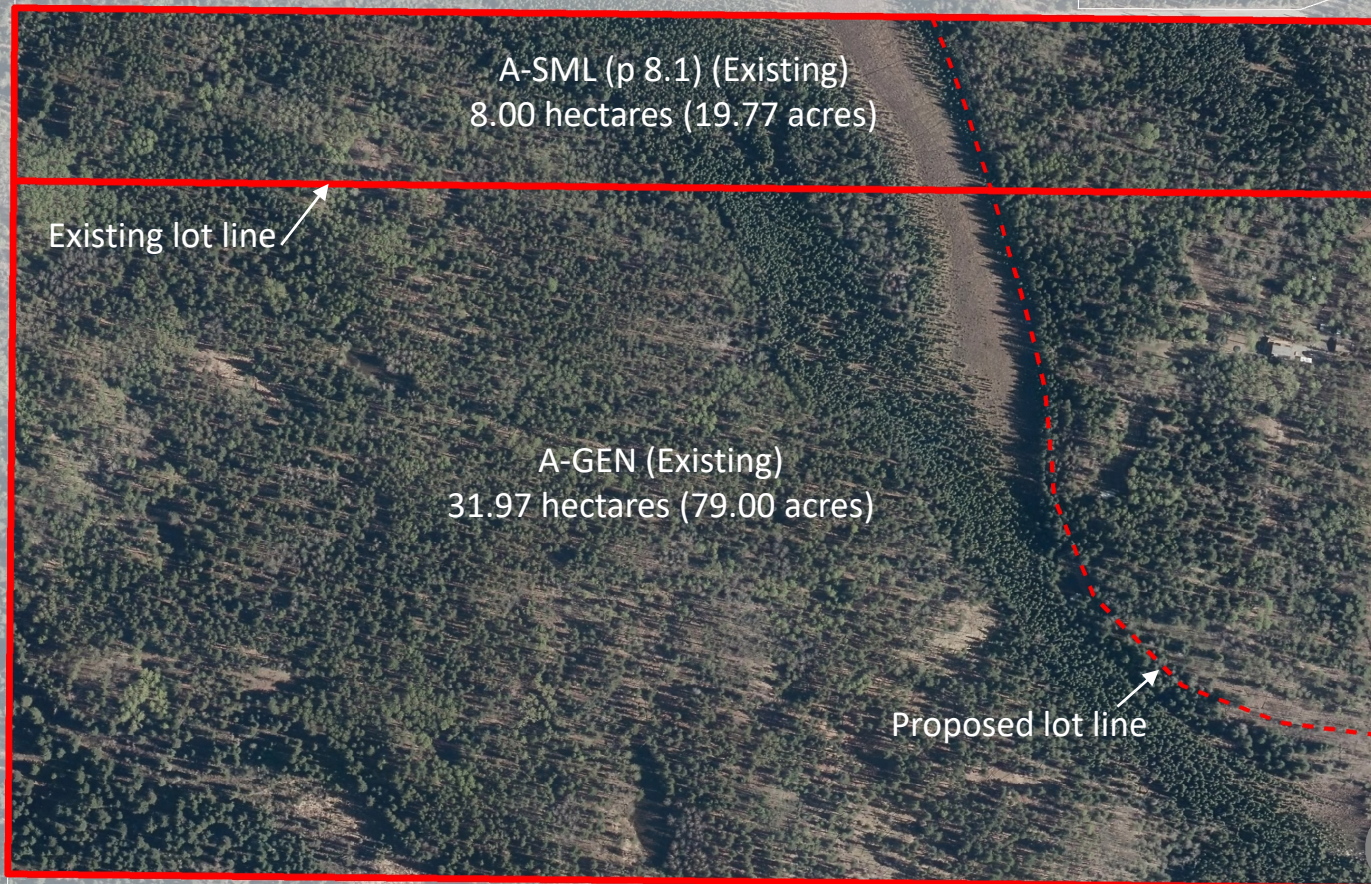
Division: 1
Roll: 03908007/03908028
File: PL20210138
Printed: Aug 4, 2021
Legal: A portion of NW-08-23-05-W05M



Existing Lots

Redesignation Proposal

To redesignate a ± 5.62 ha (± 13.89 ac) portion of the subject lands from Agricultural, General District (A-GEN) to Agricultural, Small District (A-SML p 8.1) and a ± 5.52 ha (± 13.64 ac) portion of the subject lands from Agricultural, Small District (A-SML p 8.1) to Agricultural, General District (A-GEN) in order to facilitate a Boundary Adjustment.

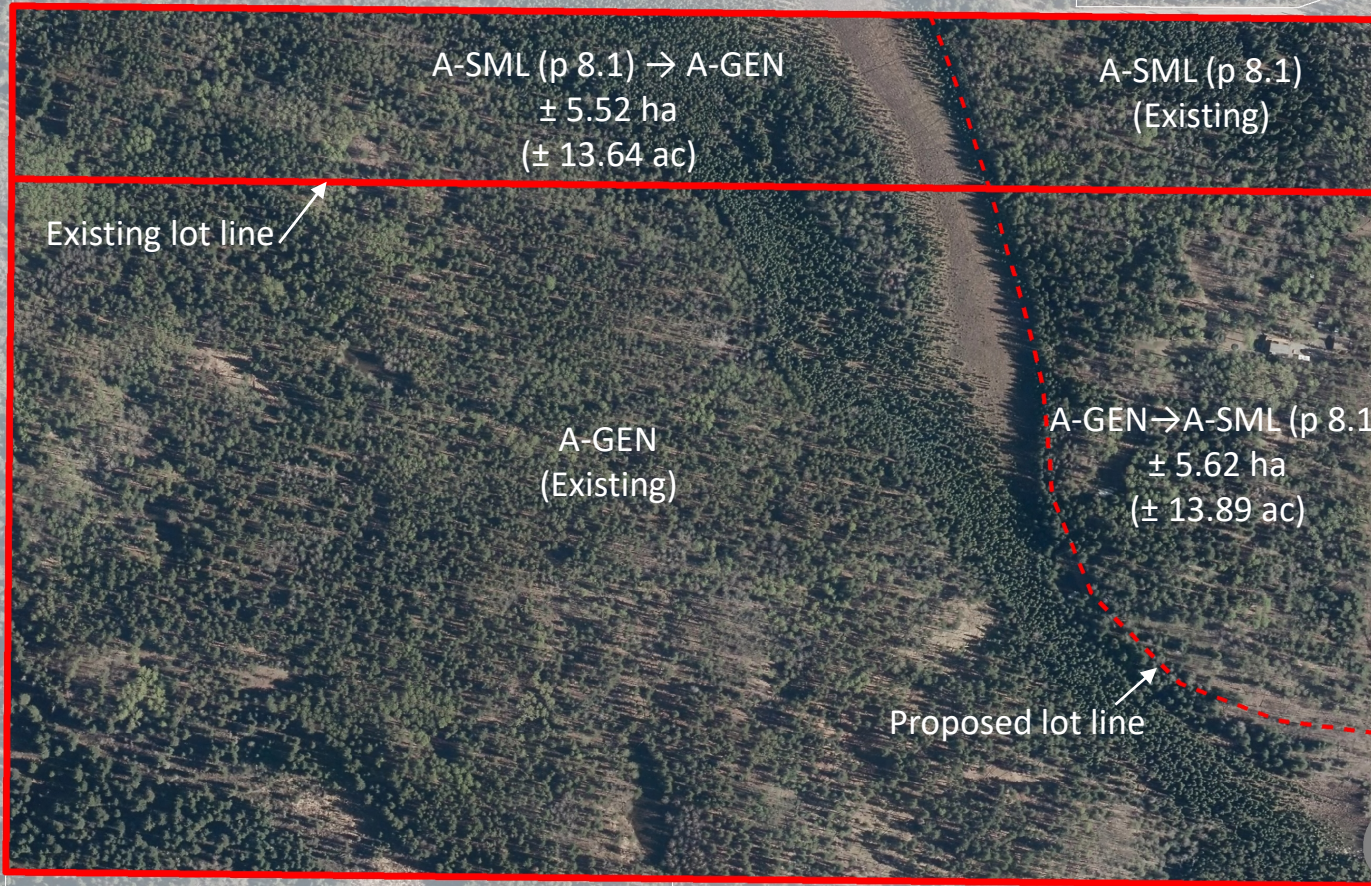


Division: 1
 Roll: 03908007/03908028
 File: PL20210138
 Printed: Aug 4, 2021
 Legal: A portion of NW-08-23-05-W05M

**Development
 Proposal**

Redesignation Proposal

To redesignate a ± 5.62 ha (± 13.89 ac) portion of the subject lands from Agricultural, General District (A-GEN) to Agricultural, Small District (A-SML p 8.1) and a ± 5.52 ha (± 13.64 ac) portion of the subject lands from Agricultural, Small District (A-SML p 8.1) to Agricultural, General District (A-GEN) in order to facilitate a Boundary Adjustment.



Current Land Use designations

A-SML p8.1

A-GEN

FORESTRY WAY

Redesignation Proposal

To redesignate a ± 5.62 ha (± 13.89 ac) portion of the subject lands from Agricultural, General District (A-GEN) to Agricultural, Small District (A-SML p 8.1) and a ± 5.52 ha (± 13.64 ac) portion of the subject lands from Agricultural, Small District (A-SML p 8.1) to Agricultural, General District (A-GEN) in order to facilitate a Boundary Adjustment.

Division: 1

Roll: 03908007/03908028

File: PL20210138

Printed: Aug 4, 2021

Legal: A portion of NW-08-23-05-W05M

Proposed Land Use designations

A-GEN
 ± 31.87 ha
 (± 78.76 ac)

A-SML p8.1
 ± 8.11 ha
 $\pm (20.04$ ac)

FORESTRY WAY

Redesignation Proposal

To redesignate a ± 5.62 ha (± 13.89 ac) portion of the subject lands from Agricultural, General District (A-GEN) to Agricultural, Small District (A-SML p 8.1) and a ± 5.52 ha (± 13.64 ac) portion of the subject lands from Agricultural, Small District (A-SML p 8.1) to Agricultural, General District (A-GEN) in order to facilitate a Boundary Adjustment.

Division: 1
 Roll: 03908007/03908028
 File: PL20210138
 Printed: Aug 4, 2021
 Legal: A portion of NW-08-23-05-W05M

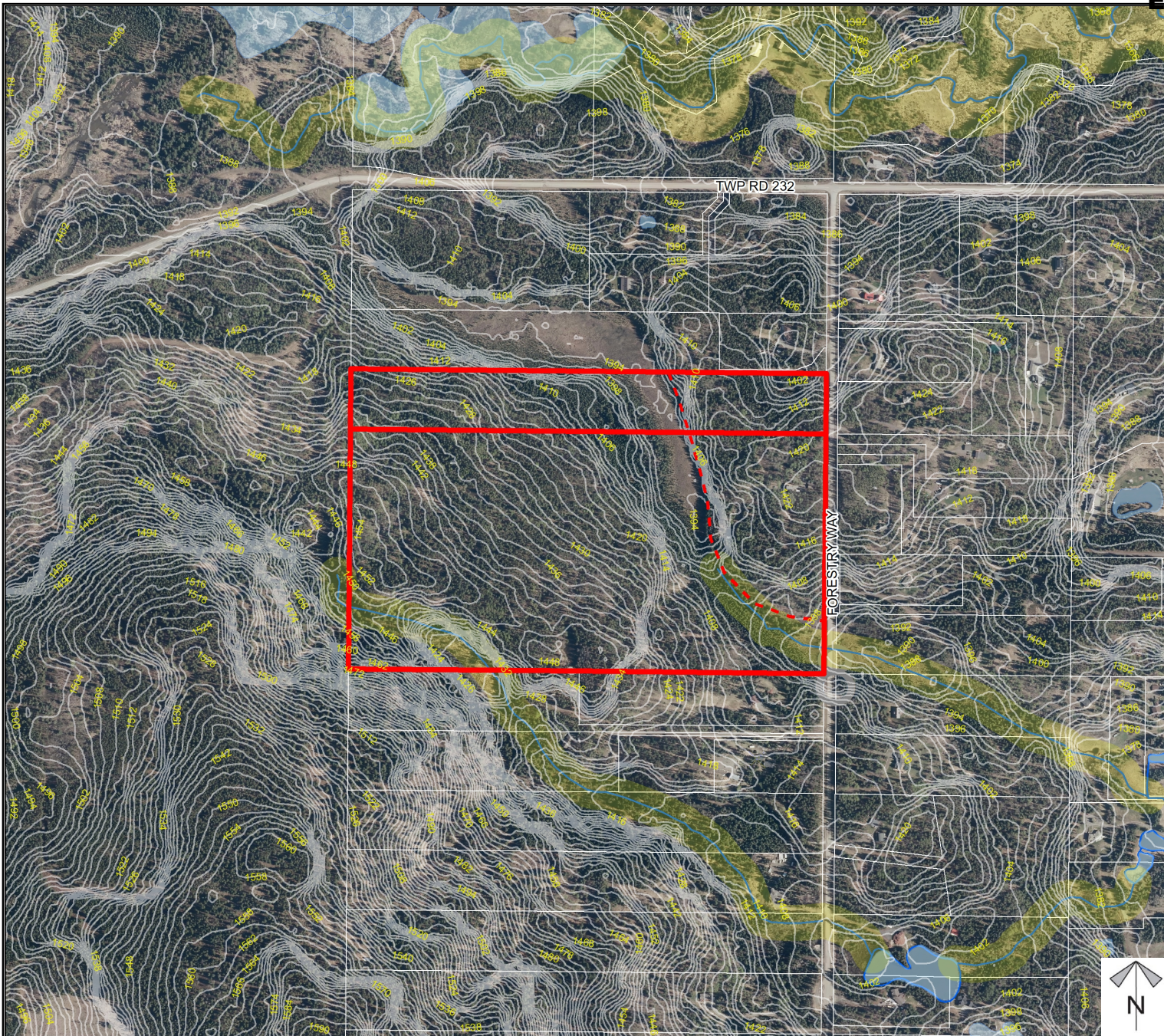
Environmental

Redesignation Proposal

To redesignate a ± 5.62 ha (± 13.89 ac) portion of the subject lands from Agricultural, General District (A-GEN) to Agricultural, Small District (A-SML p 8.1) and a ± 5.52 ha (± 13.64 ac) portion of the subject lands from Agricultural, Small District (A-SML p 8.1) to Agricultural, General District (A-GEN) in order to facilitate a Boundary Adjustment

-  Subject Lands
-  Contour - 2 meters
-  Riparian Setbacks
-  Alberta Wetland Inventory
-  Surface Water

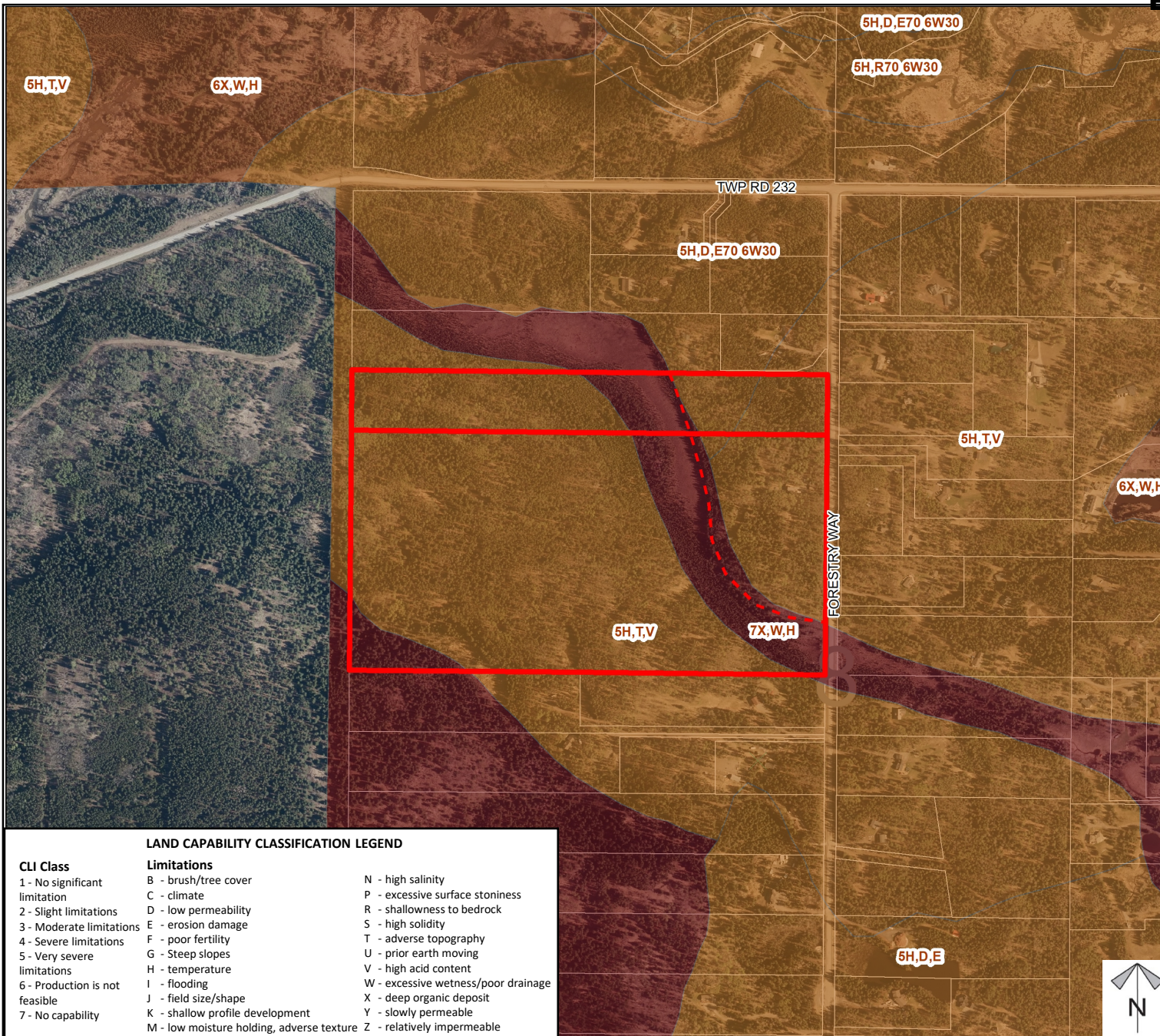
Division: 1
Roll: 03908007/03908028
File: PL20210138
Printed: Aug 4, 2021
Legal: A portion of NW-08-23-05-W05M



Soil Classifications

Redesignation Proposal

To redesignate a ± 5.62 ha (± 13.89 ac) portion of the subject lands from Agricultural, General District (A-GEN) to Agricultural, Small District (A-SML p 8.1) and a ± 5.52 ha (± 13.64 ac) portion of the subject lands from Agricultural, Small District (A-SML p 8.1) to Agricultural, General District (A-GEN) in order to facilitate a Boundary Adjustment.



LAND CAPABILITY CLASSIFICATION LEGEND

CLI Class	Limitations	
1 - No significant limitation	B - brush/tree cover	N - high salinity
2 - Slight limitations	C - climate	P - excessive surface stoniness
3 - Moderate limitations	D - low permeability	R - shallowness to bedrock
4 - Severe limitations	E - erosion damage	S - high solidity
5 - Very severe limitations	F - poor fertility	T - adverse topography
	G - Steep slopes	U - prior earth moving
	H - temperature	V - high acid content
6 - Production is not feasible	I - flooding	W - excessive wetness/poor drainage
7 - No capability	J - field size/shape	X - deep organic deposit
	K - shallow profile development	Y - slowly permeable
	M - low moisture holding, adverse texture	Z - relatively impermeable

Division: 1
 Roll: 03908007/03908028
 File: PL20210138
 Printed: Aug 4, 2021
 Legal: A portion of NW-08-23-05-W05M

**Landowner
Circulation
Area**

Redesignation Proposal

To redesignate a ± 5.62 ha (± 13.89 ac) portion of the subject lands from Agricultural, General District (A-GEN) to Agricultural, Small District (A-SML p 8.1) and a ± 5.52 ha (± 13.64 ac) portion of the subject lands from Agricultural, Small District (A-SML p 8.1) to Agricultural, General District (A-GEN) in order to facilitate a Boundary Adjustment.

Legend

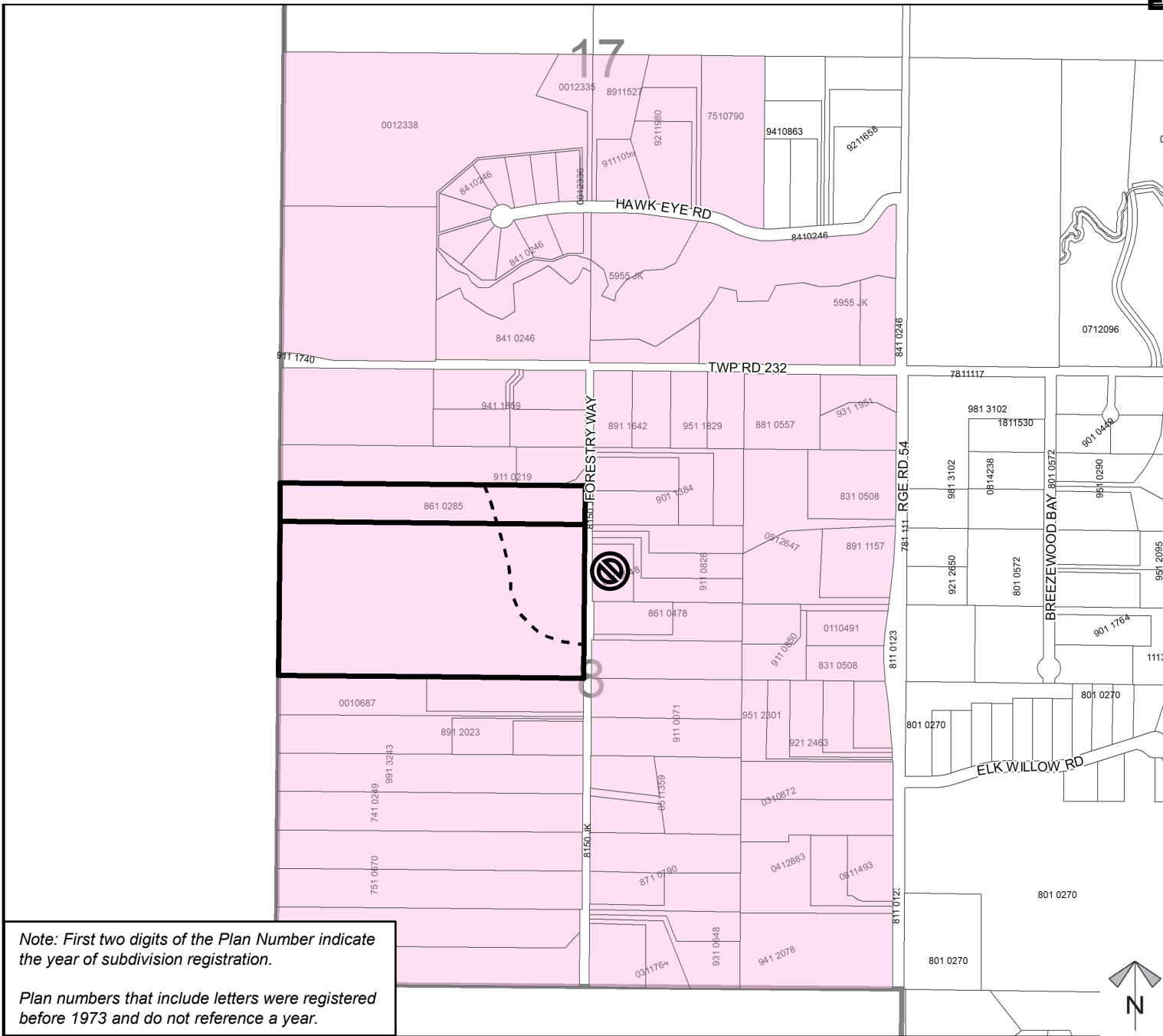
Support



Not Support



Division: 1
Roll: 03908007/03908028
File: PL20210138
Printed: Aug 4, 2021
Legal: A portion of NW-08-23-05-W05M



Note: First two digits of the Plan Number indicate the year of subdivision registration.

Plan numbers that include letters were registered before 1973 and do not reference a year.