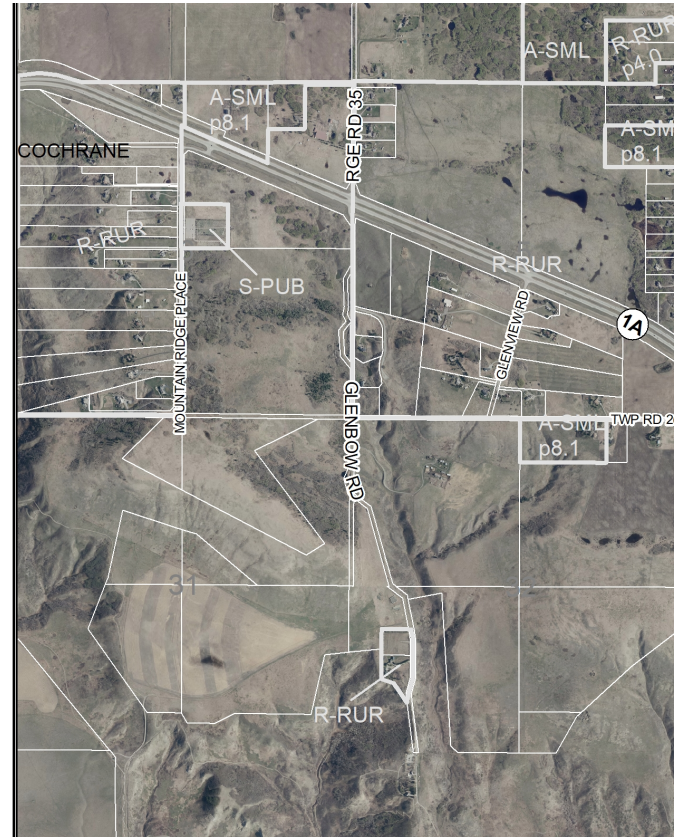
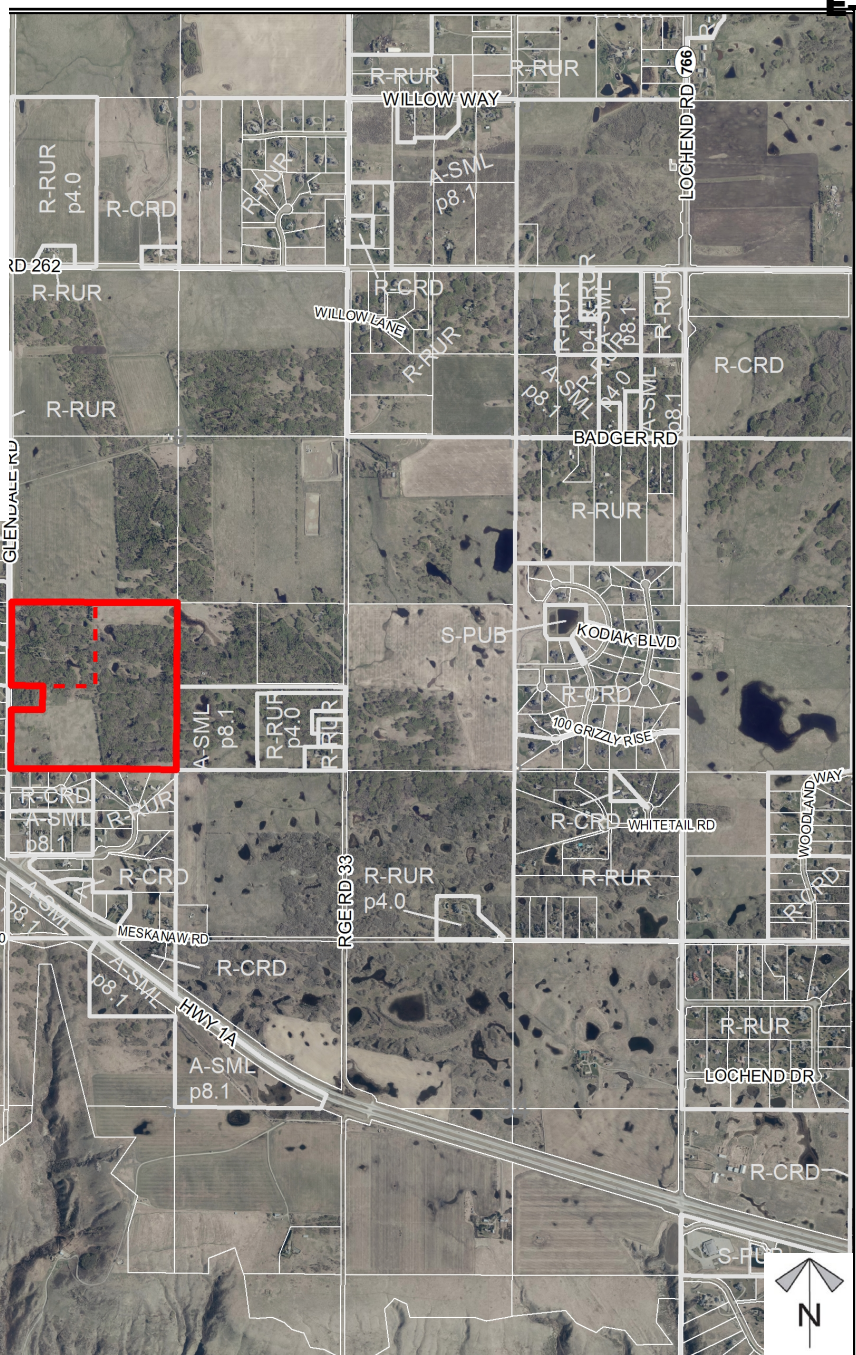
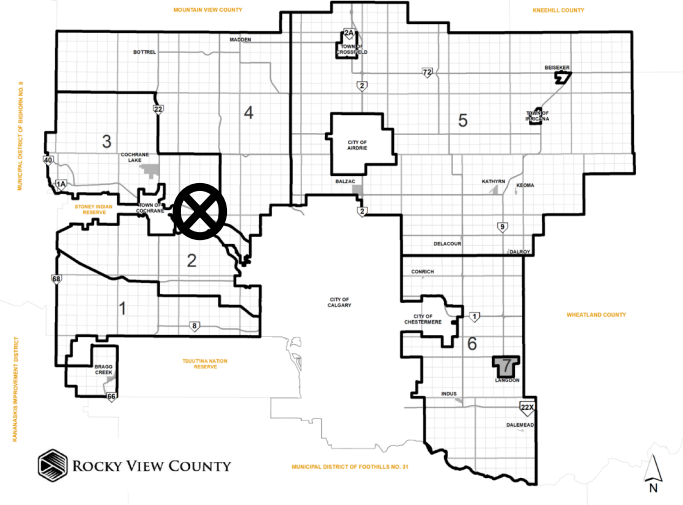


# Location & Context

## Redesignation Proposal

To redesignate the subject lands from Agriculture, General District (A-GEN) to Agriculture, Small Parcel District (A-SML p16.1) to facilitate creation of a ± 16.19 hectare (± 40.00 acre) parcel with ± 46.24 hectare (± 114.62 acre) remainder.

Division: 03  
Roll: 06704031  
File: PL20210141  
Printed: Aug 10, 2021  
Legal: A portion of NW-04-26-03-W05M



# Development Proposal

## Redesignation Proposal

To redesignate the subject lands from Agriculture, General District (A-GEN) to Agriculture, Small Parcel District (A-SML p16.1) to facilitate creation of a  $\pm 16.19$  hectare ( $\pm 40.00$  acre) parcel with  $\pm 46.24$  hectare ( $\pm 114.62$  acre) remainder.

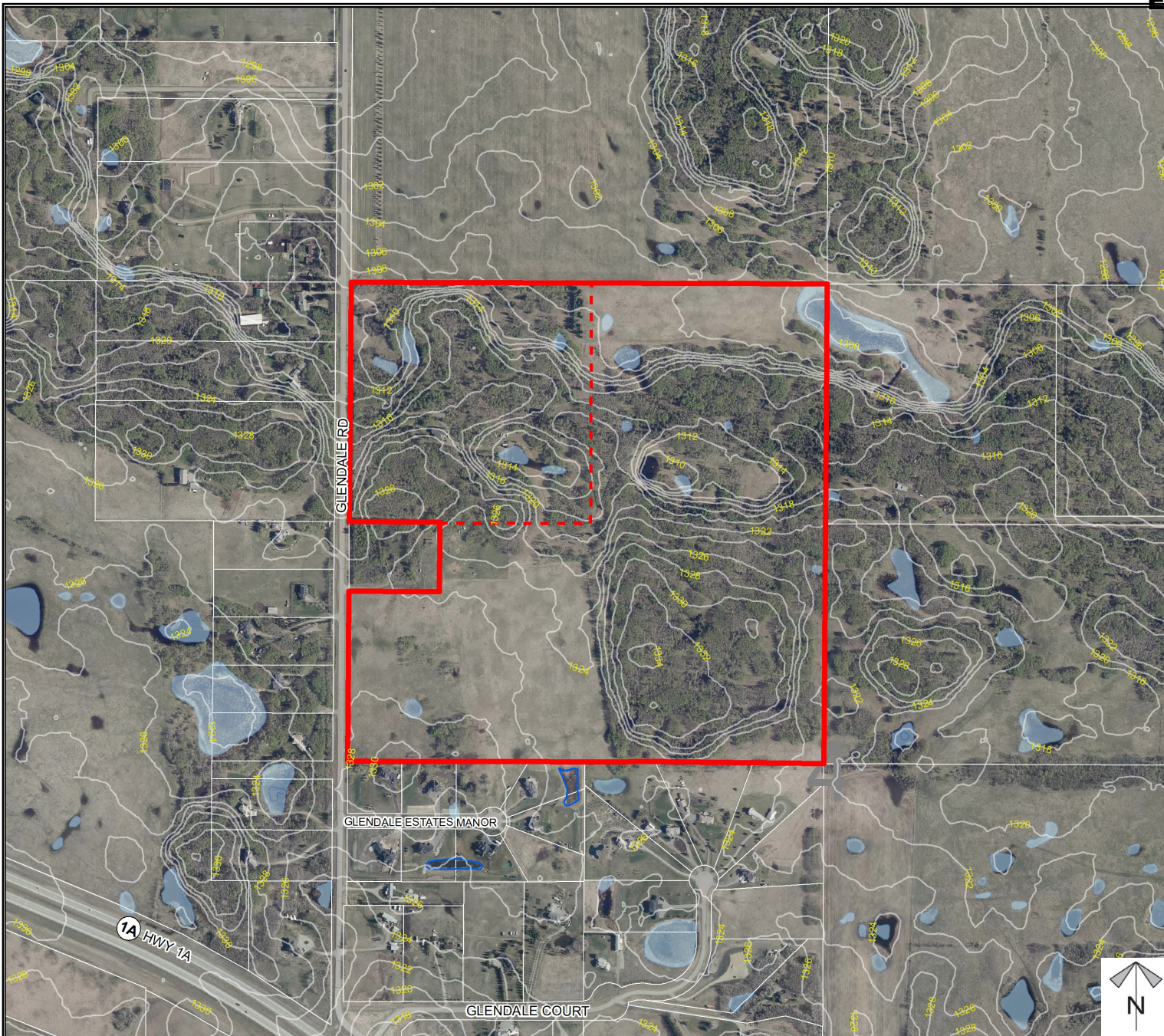


Division: 03  
Roll: 06704031  
File: PL20210141  
Printed: Aug 10, 2021  
Legal: A portion of NW-04-26-03-W05M

Environmental

Redesignation Proposal

To redesignate the subject lands from Agriculture, General District (A-GEN) to Agriculture, Small Parcel District (A-SML p16.1) to facilitate creation of a ± 16.19 hectare (± 40.00 acre) parcel with ± 46.24 hectare (± 114.62 acre) remainder.



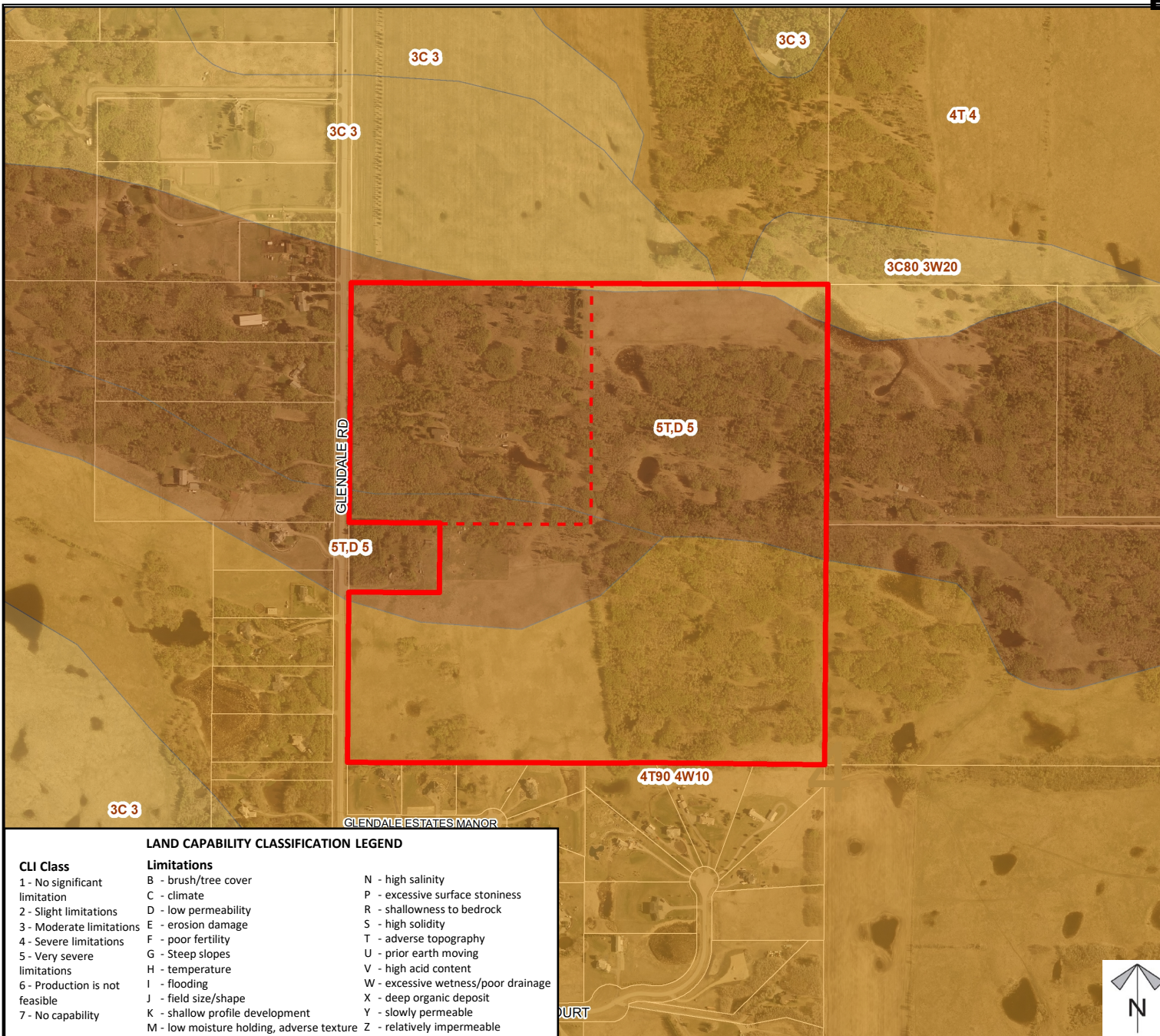
-  Subject Lands
-  Contour - 2 meters
-  Riparian Setbacks
-  Alberta Wetland Inventory
-  Surface Water

Division: 03  
 Roll: 06704031  
 File: PL20210141  
 Printed: Aug 10, 2021  
 Legal: A portion of NW-04-26-03-W05M

# Soil Classifications

## Redesignation Proposal

To redesignate the subject lands from Agriculture, General District (A-GEN) to Agriculture, Small Parcel District (A-SML p16.1) to facilitate creation of a ± 16.19 hectare (± 40.00 acre) parcel with ± 46.24 hectare (± 114.62 acre) remainder.



LAND CAPABILITY CLASSIFICATION LEGEND		
CLI Class	Limitations	
1 - No significant limitation	B - brush/tree cover	N - high salinity
2 - Slight limitations	C - climate	P - excessive surface stoniness
3 - Moderate limitations	D - low permeability	R - shallowness to bedrock
4 - Severe limitations	E - erosion damage	S - high solidity
5 - Very severe limitations	F - poor fertility	T - adverse topography
6 - Production is not feasible	G - Steep slopes	U - prior earth moving
7 - No capability	H - temperature	V - high acid content
	I - flooding	W - excessive wetness/poor drainage
	J - field size/shape	X - deep organic deposit
	K - shallow profile development	Y - slowly permeable
	M - low moisture holding, adverse texture	Z - relatively impermeable



Division: 03  
 Roll: 06704031  
 File: PL20210141  
 Printed: Aug 10, 2021  
 Legal: A portion of NW-04-26-03-W05M



# Landowner Circulation Area

## Redesignation Proposal

To redesignate the subject lands from Agriculture, General District (A-GEN) to Agriculture, Small Parcel District (A-SML p16.1) to facilitate creation of a ± 16.19 hectare (± 40.00 acre) parcel with ± 46.24 hectare (± 114.62 acre) remainder.

### Legend

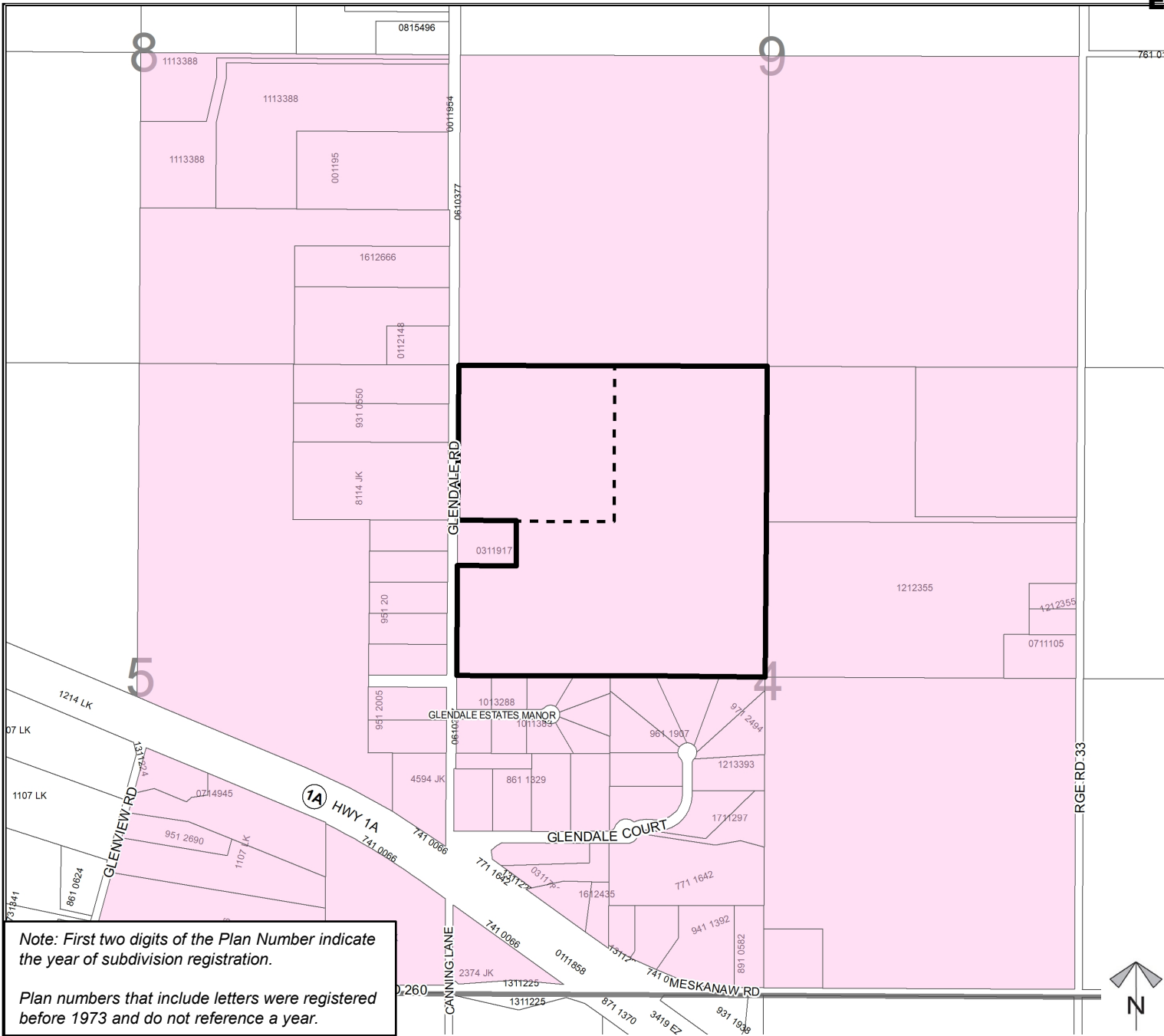
Support



Not Support



Division: 03  
Roll: 06704031  
File: PL20210141  
Printed: Aug 10, 2021  
Legal: A portion of NW-04-26-03-W05M



Note: First two digits of the Plan Number indicate the year of subdivision registration.

Plan numbers that include letters were registered before 1973 and do not reference a year.

