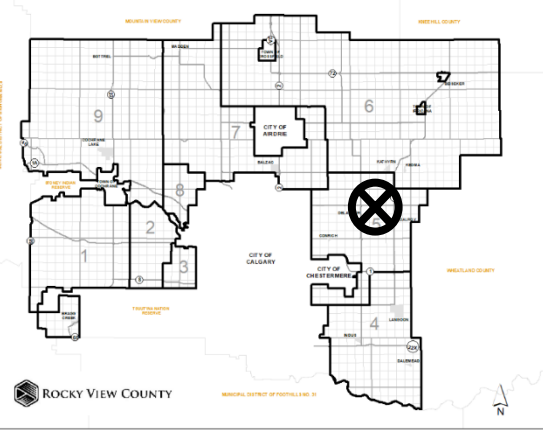
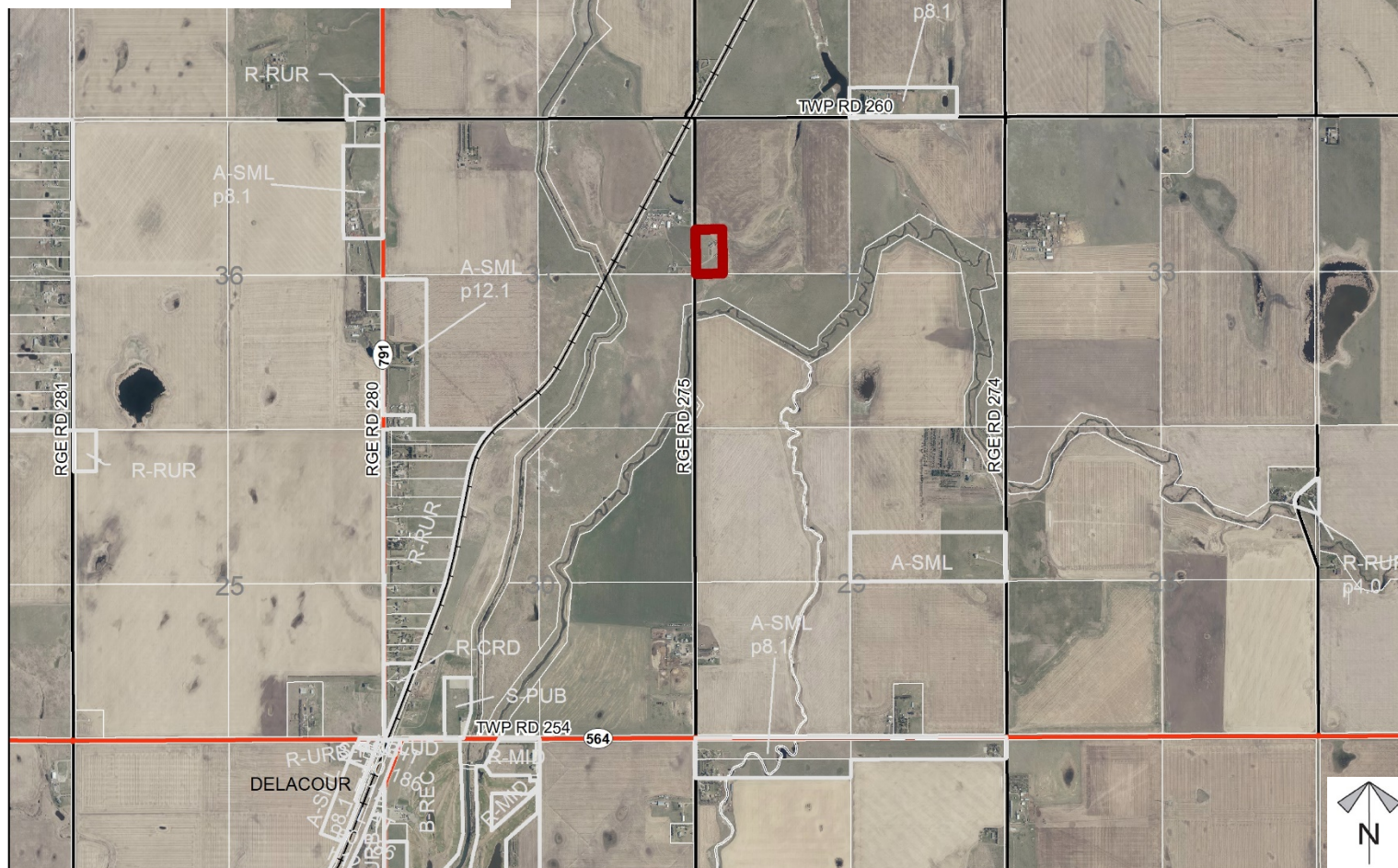


Location & Context

Development Proposal

To redesignate the subject lands from Agricultural, General District (A-GEN) to Business, Live-Work District (B-LWK), in order to facilitate the operation of a trucking business.



Division: 5
 Roll: 05232003
 File: PL20200044
 Printed: April 7, 2020
 Legal: NW-32-25-27-W04M

Development Proposal

Development Proposal

To redesignate the subject lands from Agricultural, General District (A-GEN) to Business, Live-Work District (B-LWK), in order to facilitate the operation of a trucking business.

RGE RD 275

A-GEN → B-LWK
± 3.24 ha
(± 8.00 ac)

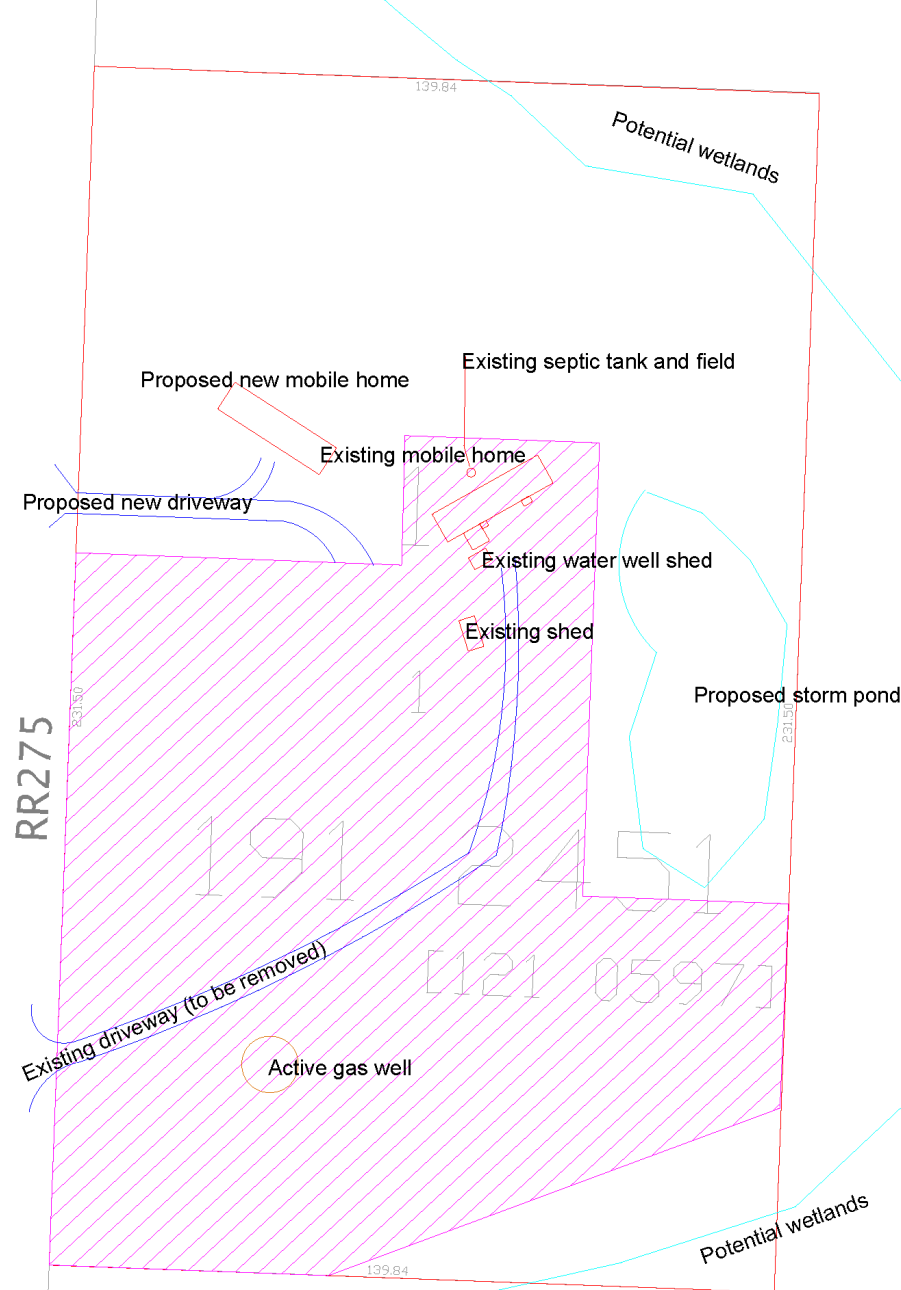


Division: 5
Roll: 05232003
File: PL20200044
Printed: April 7, 2020
Legal: NW-32-25-27-W04M

Site Plan

Development Proposal

To redesignate the subject lands from Agricultural, General District (A-GEN) to Business, Live-Work District (B-LWK), in order to facilitate the operation of a trucking business.



Division: 5
 Roll: 05232003
 File: PL20200044
 Printed: April 7, 2020
 Legal: NW-32-25-27-W04M

Environmental

Development Proposal

To redesignate the subject lands from Agricultural, General District (A-GEN) to Business, Live-Work District (B-LWK), in order to facilitate the operation of a trucking business.

-  Subject Lands
-  Contour - 2 meters
-  Riparian Setbacks
-  Alberta Wetland Inventory
-  Surface Water

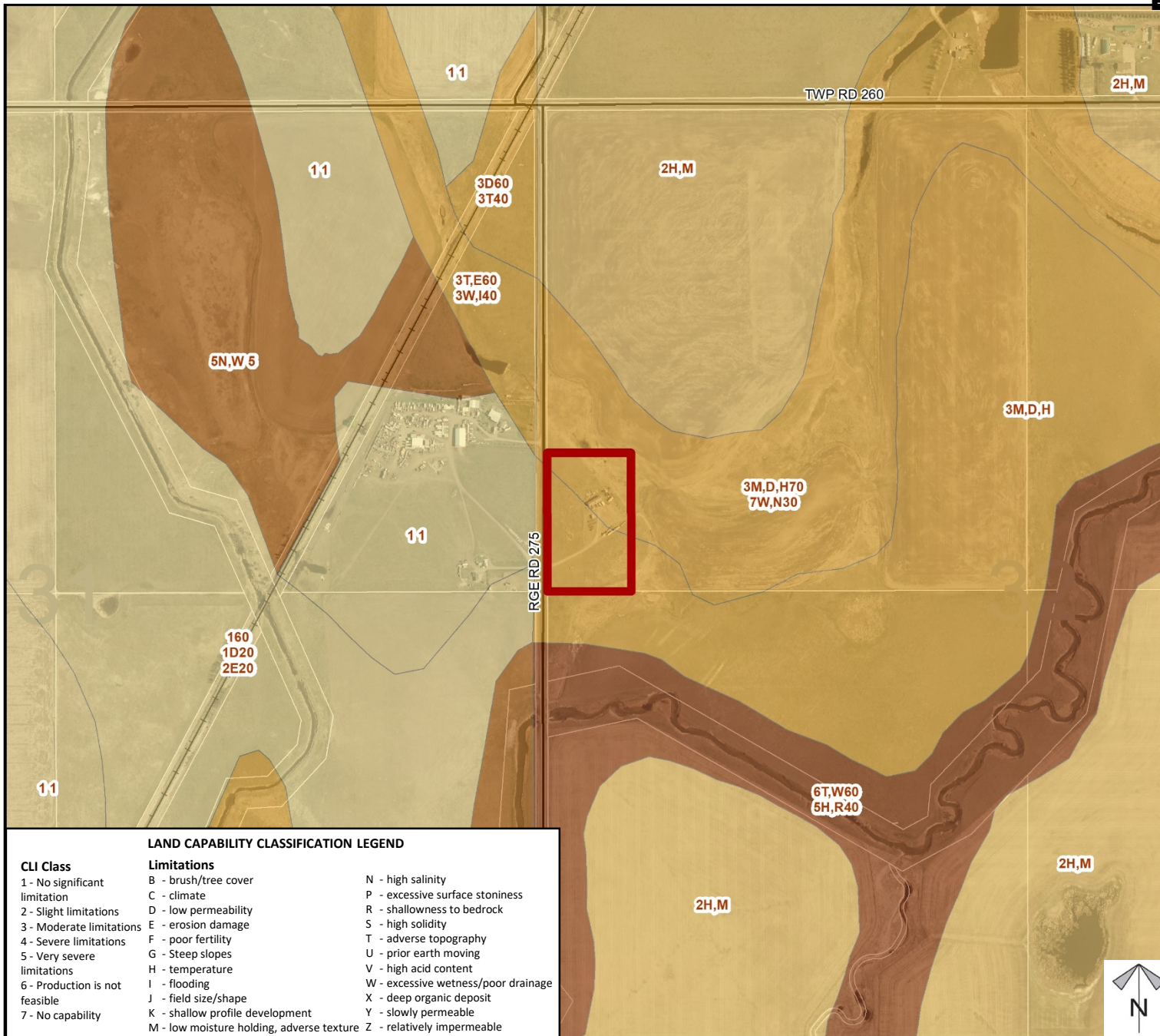
Division: 5
Roll: 05232003
File: PL20200044
Printed: April 7, 2020
Legal: NW-32-25-27-W04M



Soil Classifications

Development Proposal

To redesignate the subject lands from Agricultural, General District (A-GEN) to Business, Live-Work District (B-LWK), in order to facilitate the operation of a trucking business.



Division: 5
Roll: 05232003
File: PL20200044
Printed: April 7, 2020
Legal: NW-32-25-27-W04M

Landowner Circulation Area

Development Proposal

To redesignate the subject lands from Agricultural, General District (A-GEN) to Business, Live-Work District (B-LWK), in order to facilitate the operation of a trucking business.

Legend

Support

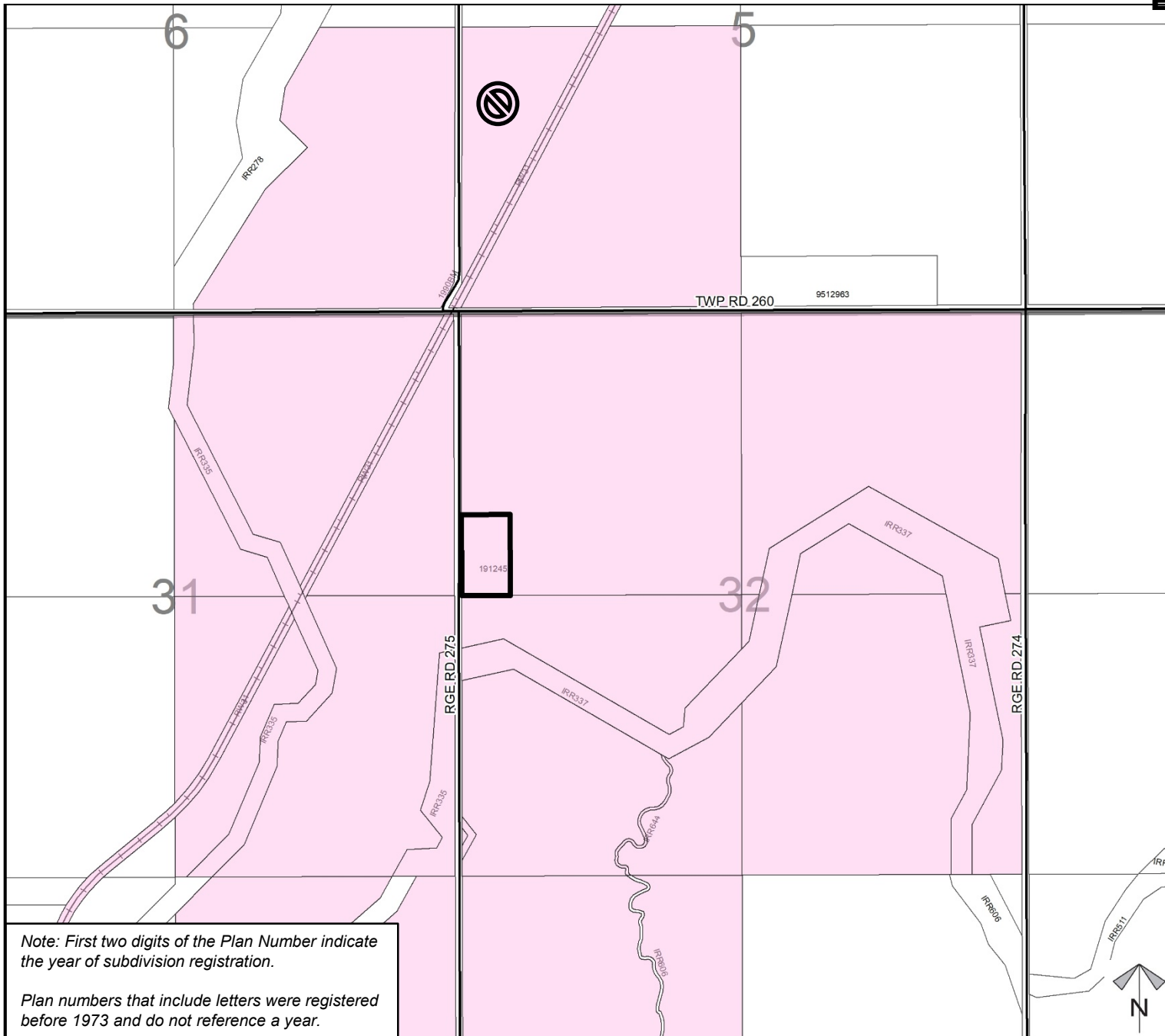


Opposition



Note: First two digits of the Plan Number indicate the year of subdivision registration.

Plan numbers that include letters were registered before 1973 and do not reference a year.



Division: 5
Roll: 05232003
File: PL20200044
Printed: April 7, 2020
Legal: NW-32-25-27-W04M

Schedule 'A'
Bylaw
C-8046-2020
Amendment**FROM**

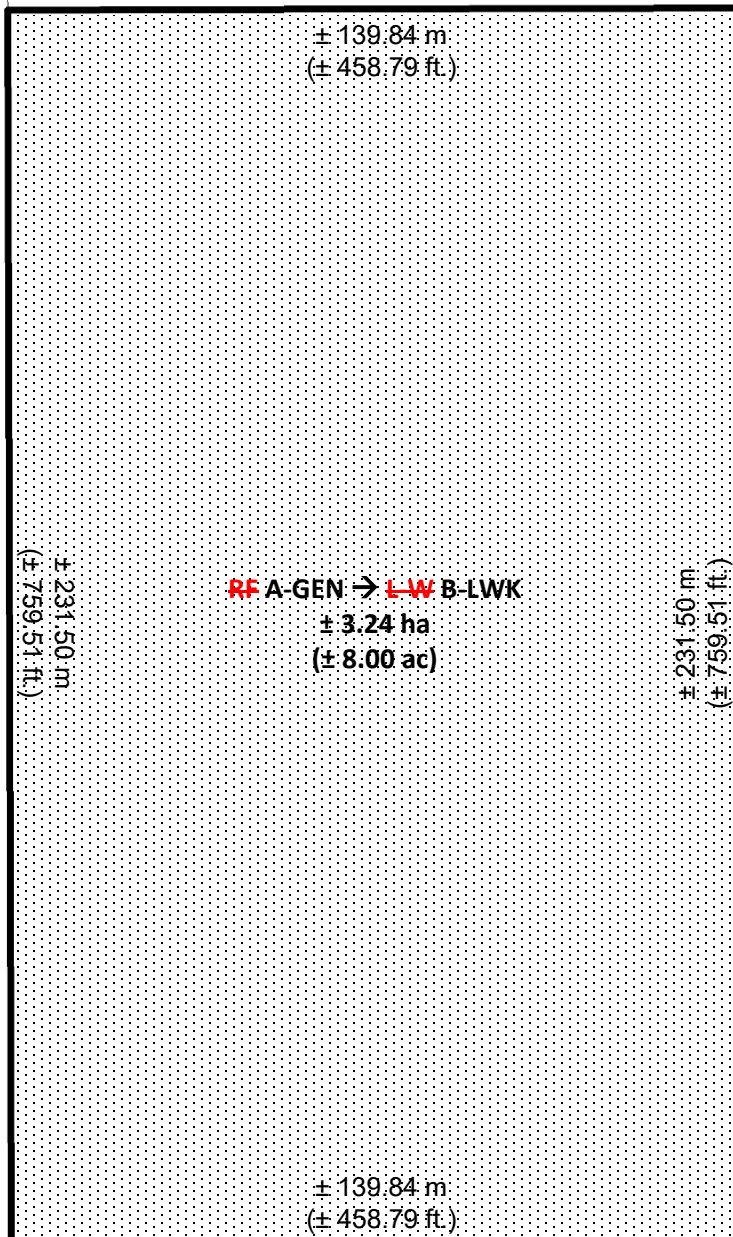
~~Ranch and Farm District~~
 Agricultural General District

TO

~~Live-Work District~~
 Business, Live-work
 District



RGE RD 275



Division: 5
 Roll: 05232003
 File: PL20200044
 Printed: April 7, 2020
 Legal: NW-32-25-27-W04M