

Location & Context

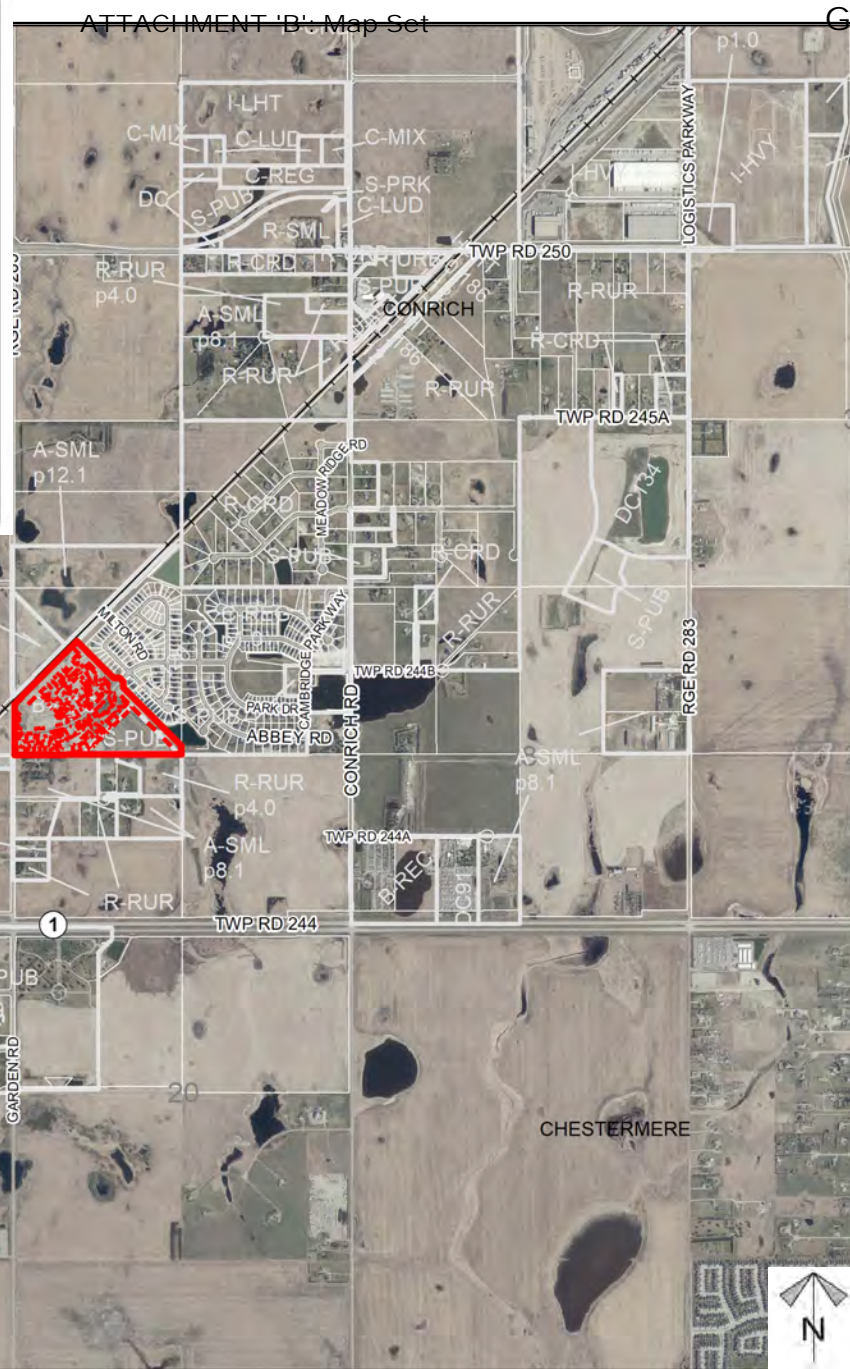
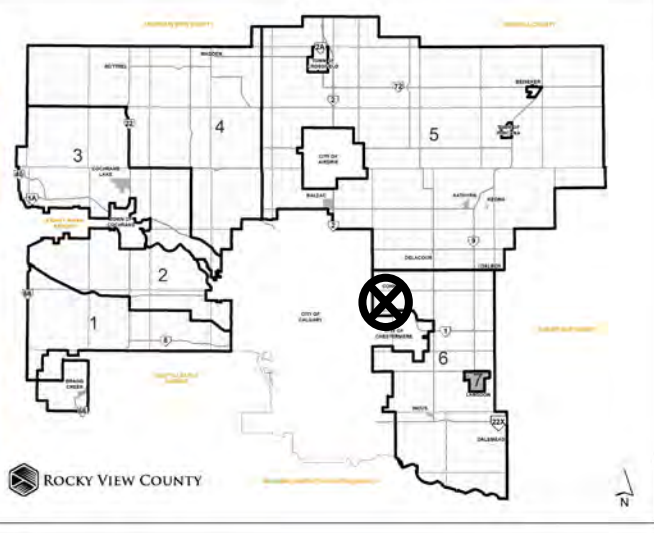
ASP Amendment; Conceptual Scheme Amendment; Redesignation Proposal

PL20210078: To amend the South Conrich Conceptual Scheme, including Appendix D, in order to allow residential and commercial uses within a portion of Cell D.

PL20210079: To amend the Conrich Area Structure Plan to change a portion of the subject lands from Highway-Business to Residential-Form To Be Determined, to allow residential use.

PL20210080: To the redesignate the subject lands from Business, Local Campus District (B-LOC) to Direct Control District (DC), Special, Public Services District (S-PUB), and Commercial, Mixed Urban District (C-MIX) to facilitate future subdivision.

*Division: 6
Roll: 04329003
File: PL20210078/79/80
Printed: April 13, 2022
Legal: A portion of NW-29-24-28-W04M*



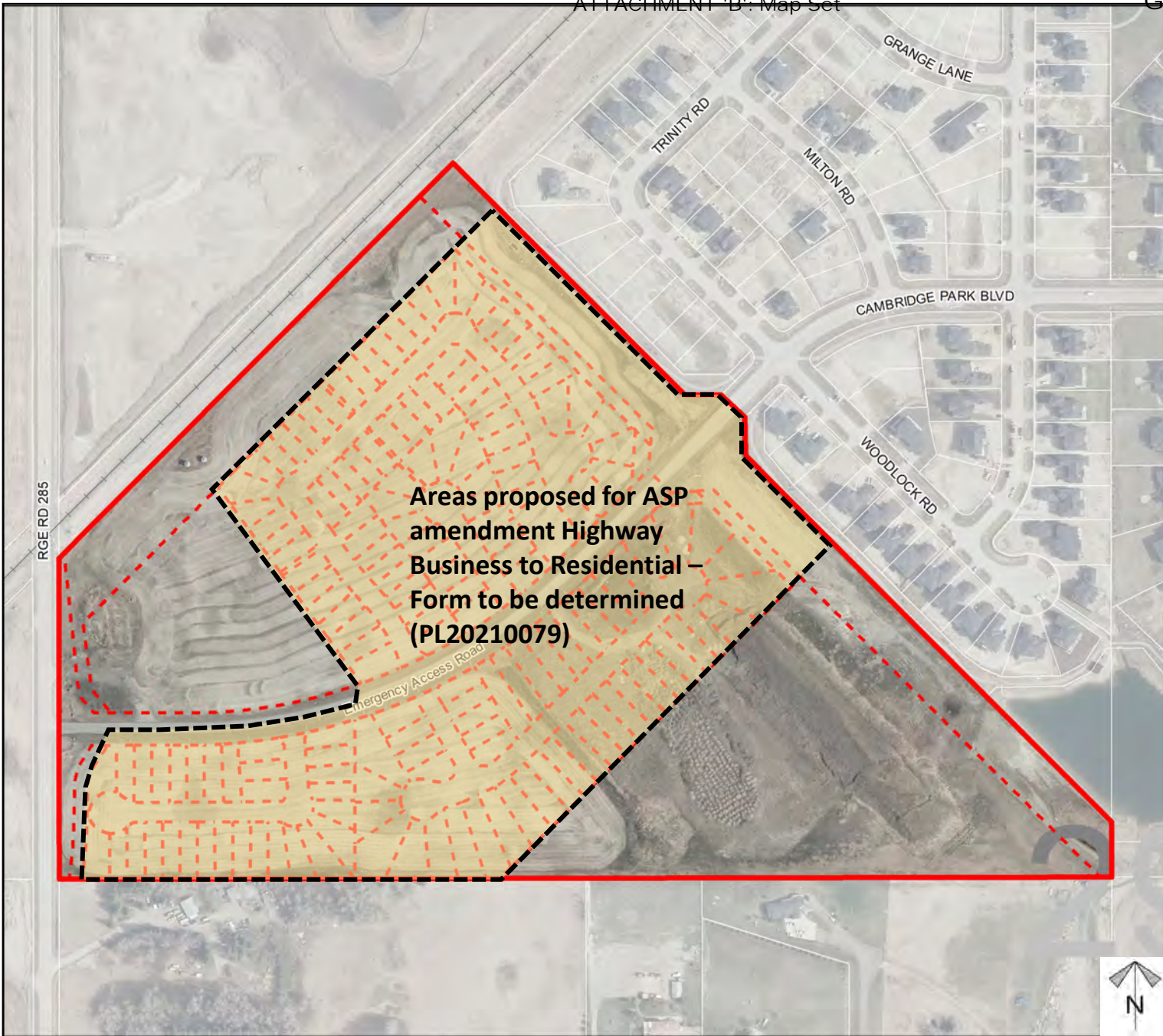
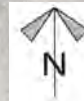
Development Proposal

ASP Amendment:

Areas proposed for ASP amendment Highway Business to Residential – Form to be determined (PL20210079)

PL20210079: To amend the Conrich Area Structure Plan to change a portion of the subject lands from Highway-Business to Residential–Form to Be Determined, to allow residential use.

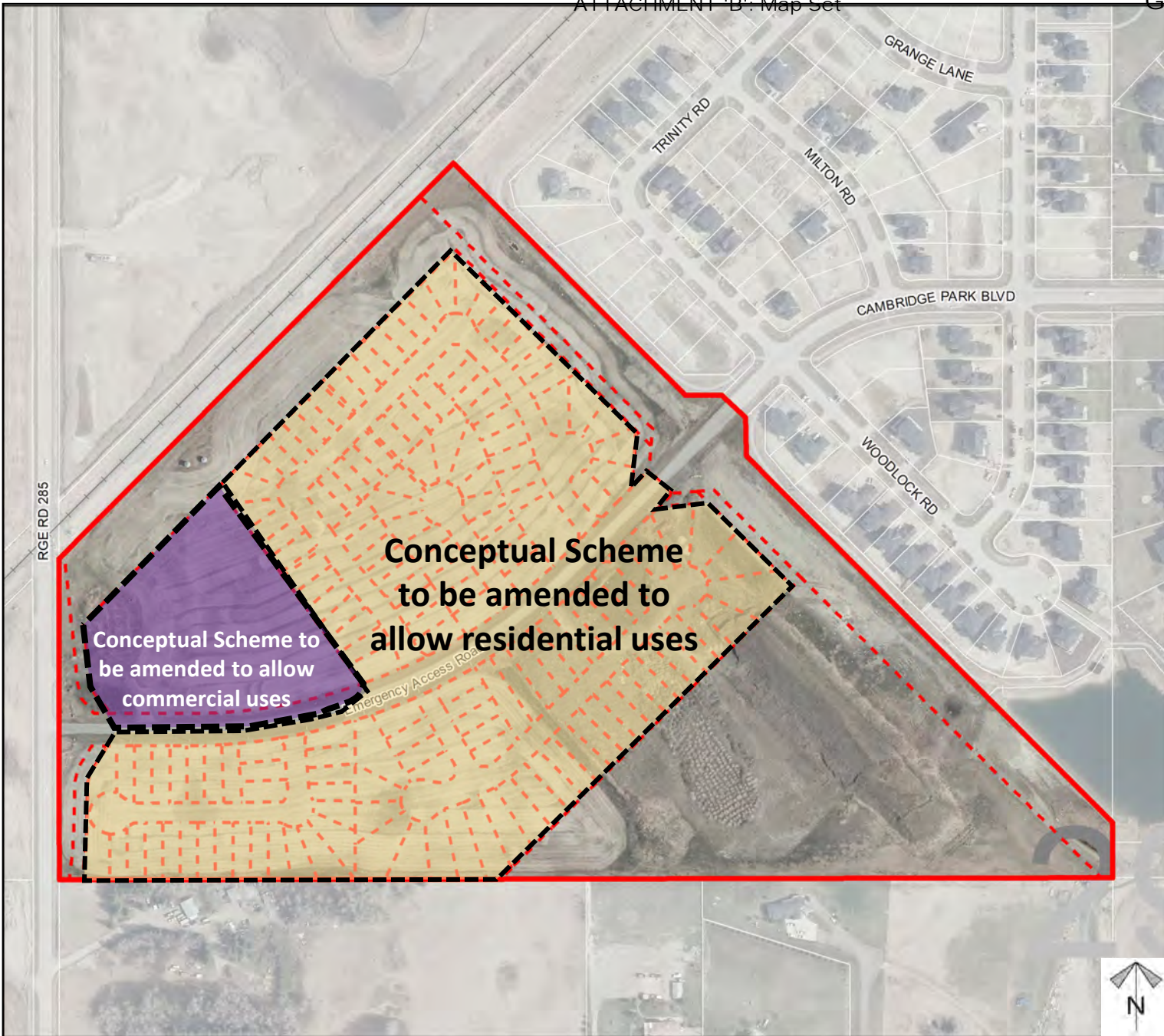
Division: 6
Roll: 04329003
File: PL20210078/79/80
Printed: April 13, 2022
Legal: A portion of NW-29-24-28-W04M



Development Proposal

Conceptual Scheme Amendment;

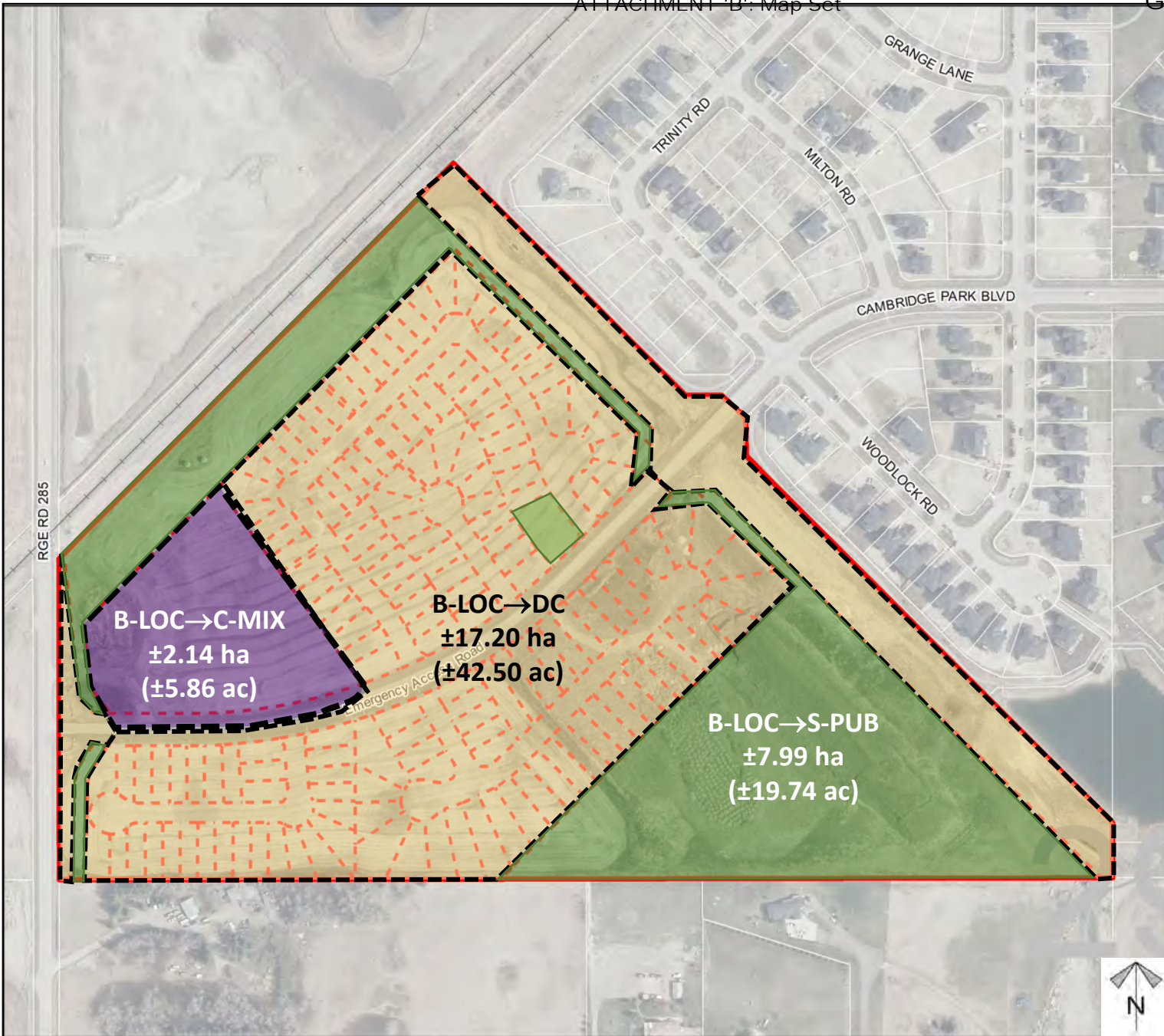
PL20210078: To amend the South Conrich Conceptual Scheme, including Appendix D, in order to allow residential and commercial uses within a portion of Cell D.



Division: 6
Roll: 04329003
File: PL20210078/79/80
Printed: April 13, 2022
Legal: A portion of NW-29-24-28-W04M

Development Proposal

Redesignation Proposal



B-LOC→C-MIX
 ±2.14 ha
 (±5.86 ac)

B-LOC→DC
 ±17.20 ha
 (±42.50 ac)

B-LOC→S-PUB
 ±7.99 ha
 (±19.74 ac)

PL20210080: To the redesignate the subject lands from Business, Local Campus District (B-LOC) to Direct Control District (DC), Special, Public Services District (S-PUB), and Commercial, Mixed Urban District (C-MIX) to facilitate future subdivision.

*Division: 6
 Roll: 04329003
 File: PL20210078/79/80
 Printed: April 13, 2022
 Legal: A portion of NW-29-24-28-W04M*



Development Proposal

ASP Amendment;
Conceptual Scheme
Amendment;
Redesignation Proposal

PL20210078: To amend the South Conrich Conceptual Scheme, including Appendix D, in order to allow residential and commercial uses within a portion of Cell D.

PL20210079: To amend the Conrich Area Structure Plan to change a portion of the subject lands from Highway-Business to Residential-Form to Be Determined, to allow residential use.

PL20210080: To the redesignate the subject lands from Business, Local Campus District (B-LOC) to Direct Control District (DC), Special, Public Services District (S-PUB), and Commercial, Mixed Urban District (C-MIX) to facilitate future subdivision.



Division: 6
Roll: 04329003
File: PL20210078/79/80
Printed: April 13, 2022
Legal: A portion of NW-29-24-28-W04M

Development Proposal

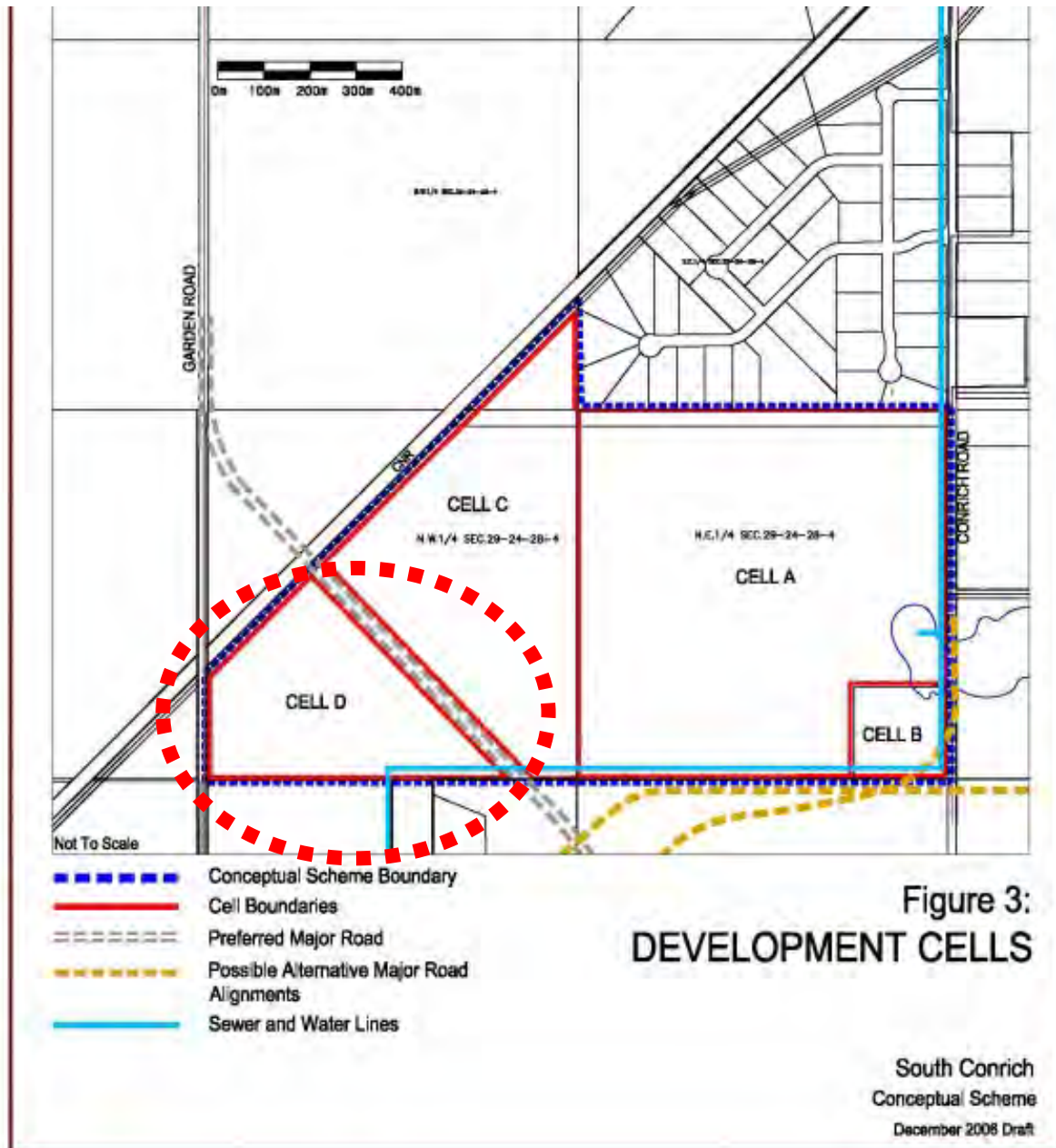
ASP Amendment; Conceptual Scheme Amendment; Redesignation Proposal

PL20210078: To amend the South Conrich Conceptual Scheme, including Appendix D, in order to allow residential and commercial uses within a portion of Cell D.

PL20210079: To amend the Conrich Area Structure Plan to change a portion of the subject lands from Highway-Business to Residential-Form to Be Determined, to allow residential use.

PL20210080: To the redesignate the subject lands from Business, Local Campus District (B-LOC) to Direct Control District (DC), Special, Public Services District (S-PUB), and Commercial, Mixed Urban District (C-MIX) to facilitate future subdivision.

Division: 6
 Roll: 04329003
 File: PL20210078/79/80
 Printed: April 13, 2022
 Legal: A portion of NW-29-24-28-W04M



Development Proposal

ASP Amendment; Conceptual Scheme Amendment; Redesignation Proposal

PL20210078: To amend the South Conrich Conceptual Scheme, including Appendix D, in order to allow residential and commercial uses within a portion of Cell D.

PL20210079: To amend the Conrich Area Structure Plan to change a portion of the subject lands from Highway-Business to Residential-Form to Be Determined, to allow residential use.

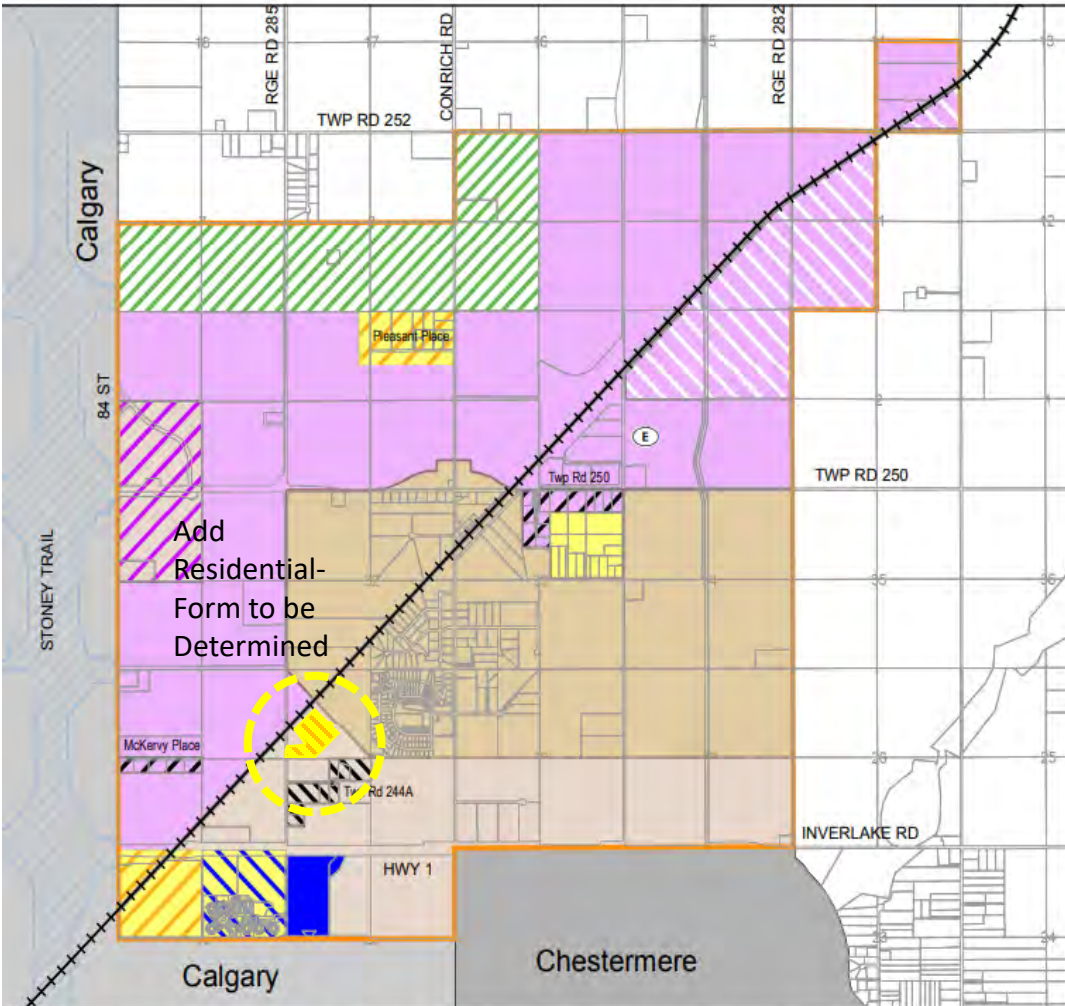
PL20210080: To the redesignate the subject lands from Business, Local Campus District (B-LOC) to Direct Control District (DC), Special, Public Services District (S-PUB), and Commercial, Mixed Urban District (C-MIX) to facilitate future subdivision.

Map 5: Land Use Strategy

- ASP Boundary
- Future Policy Area
- Residential-Form to be determined
- Country Residential
- Institutional/Residential
- Institutional
- Industrial
- Heavy Industrial
- Industrial Transition
- Highway Business Transition
- Highway Business
- Highway Business/Industrial
- Long Term Development Area
- Emergency Services
- Transportation and Utility Corridor
- CN Railway



Division: 6
Roll: 04329003
File: PL20210078/79/80
Printed: April 13, 2022
Legal: A portion of NW-29-24-28-W04M



This map is conceptual in nature. No measurements or area calculations should be taken from this map.

Development Proposal




ASP Amendment; Conceptual Scheme Amendment; Redesignation Proposal

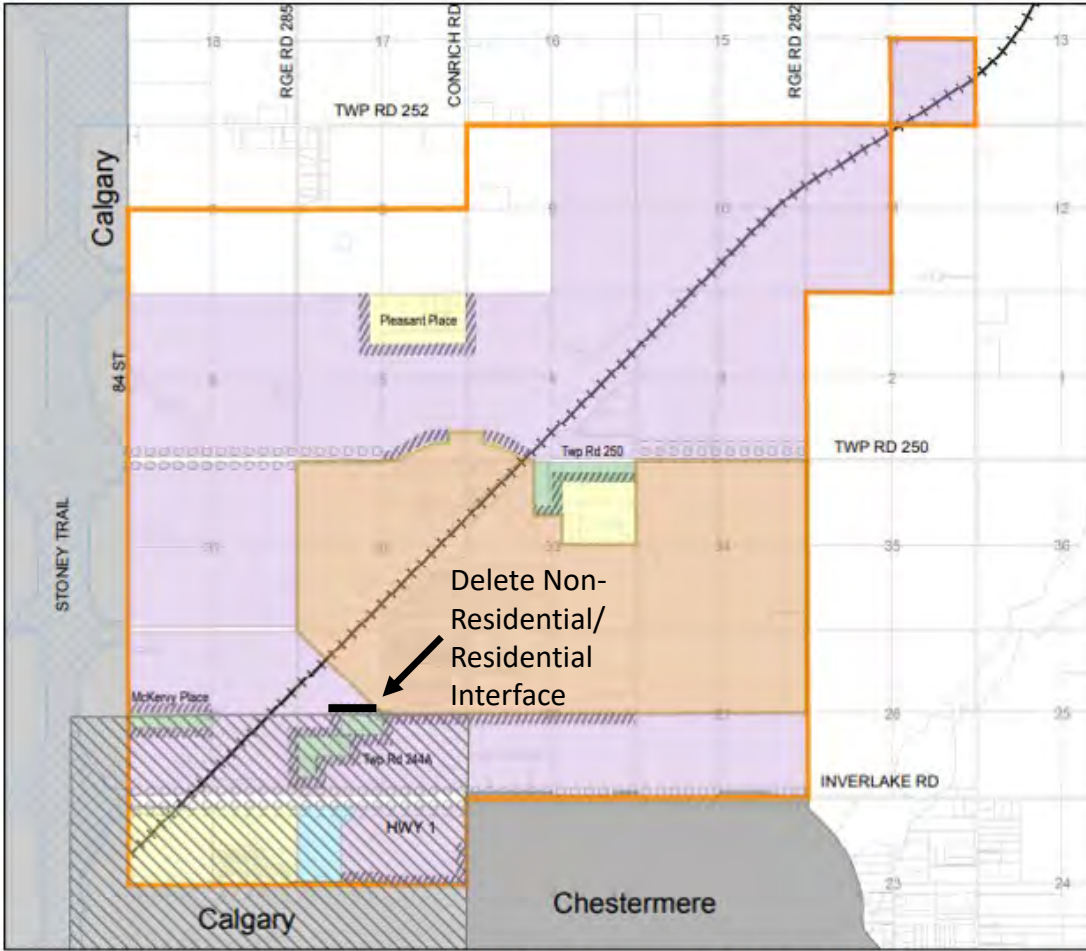
PL20210078: To amend the South Conrich Conceptual Scheme, including Appendix D, in order to allow residential and commercial uses within a portion of Cell D.

PL20210079: To amend the Conrich Area Structure Plan to change a portion of the subject lands from Highway-Business to Residential-Form to Be Determined, to allow residential use.

PL20210080: To the redesignate the subject lands from Business, Local Campus District (B-LOC) to Direct Control District (DC), Special, Public Services District (S-PUB), and Commercial, Mixed Urban District (C-MIX) to facilitate future subdivision.

Map 6: Non-Residential/ Residential Interface

-  ASP Boundary
-  Future Policy Area
-  Residential
-  Institutional
-  Business
-  Transition
-  Non-Residential/
Residential Interface
-  Gateways
-  Transportation and Utility
Corridor
-  Key Focus Area
(RVC/Calgary
Intermunicipal
Development Plan)
-  CN Railway



This map is conceptual in nature. No measurements or area calculations should be taken from this map.

MAP 1-MANAGING GROWTH

County Plan

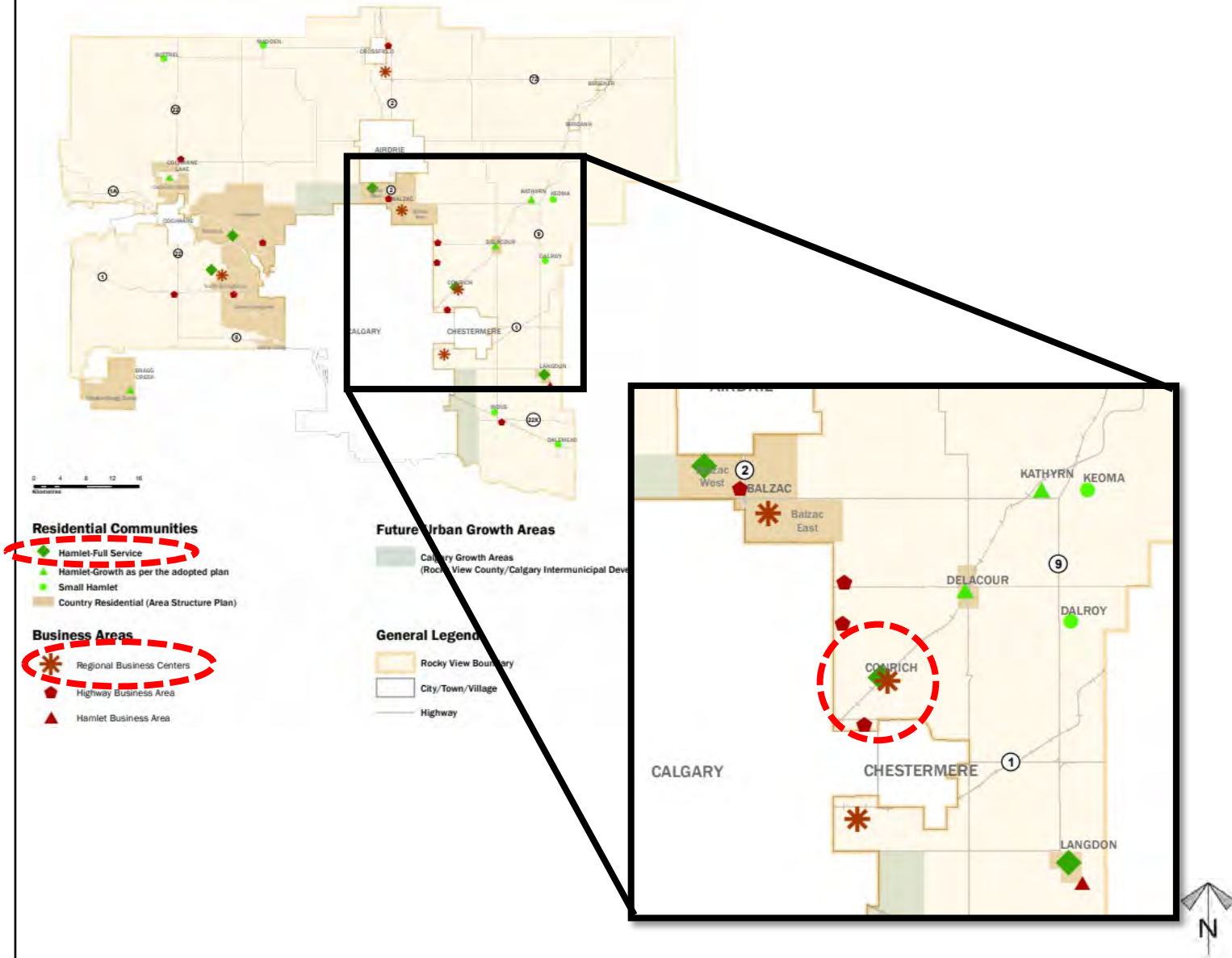
ASP Amendment;
Conceptual Scheme
Amendment;
Redesignation Proposal

PL20210078: To amend the South Conrich Conceptual Scheme, including Appendix D, in order to allow residential and commercial uses within a portion of Cell D.

PL20210079: To amend the Conrich Area Structure Plan to change a portion of the subject lands from Highway-Business to Residential-Form to Be Determined, to allow residential use.

PL20210080: To the redesignate the subject lands from Business, Local Campus District (B-LOC) to Direct Control District (DC), Special, Public Services District (S-PUB), and Commercial, Mixed Urban District (C-MIX) to facilitate future subdivision.

*Division: 6
Roll: 04329003
File: PL20210078/79/80
Printed: April 13, 2022
Legal: A portion of NW-29-24-28-W04M*



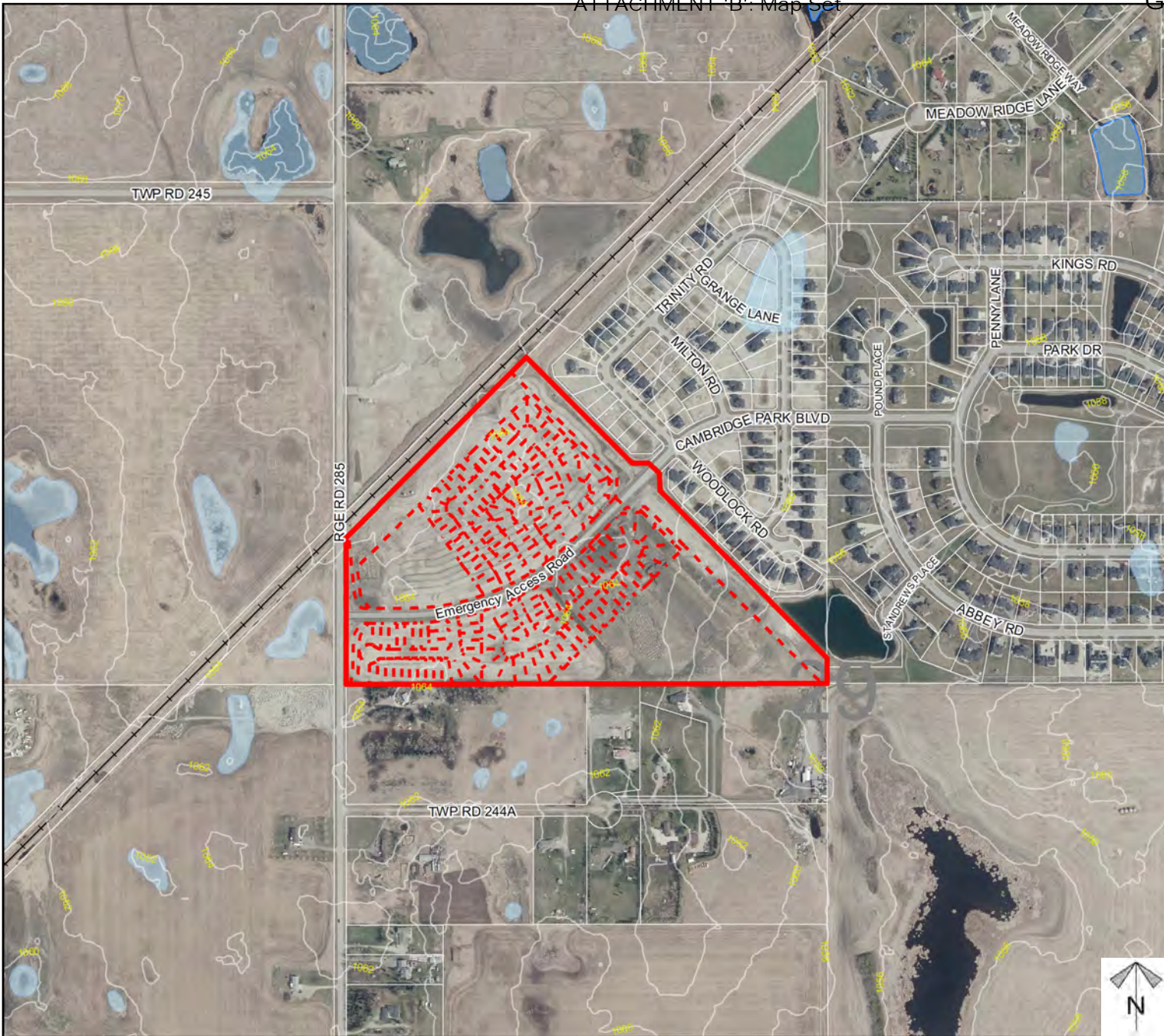
Environmental

ASP Amendment: Conceptual Scheme Amendment: Redesignation Proposal

PL20210078: To amend the South Conrich Conceptual Scheme, including Appendix D, in order to allow residential and commercial uses within a portion of Cell D.

PL20210079: To amend the Conrich Area Structure Plan to change a portion of the subject lands from Highway-Business to Residential-Form To Be Determined, to allow residential use.

-  Subject Lands
 -  Contour - 2 meters
 -  Riparian Setbacks
 -  Alberta Wetland Inventory
 -  Surface Water
- facilitate future subdivision.



Division: 6
 Roll: 04329003
 File: PL20210078/79/80
 Printed: April 13, 2022
 Legal: A portion of NW-29-24-28-W04M

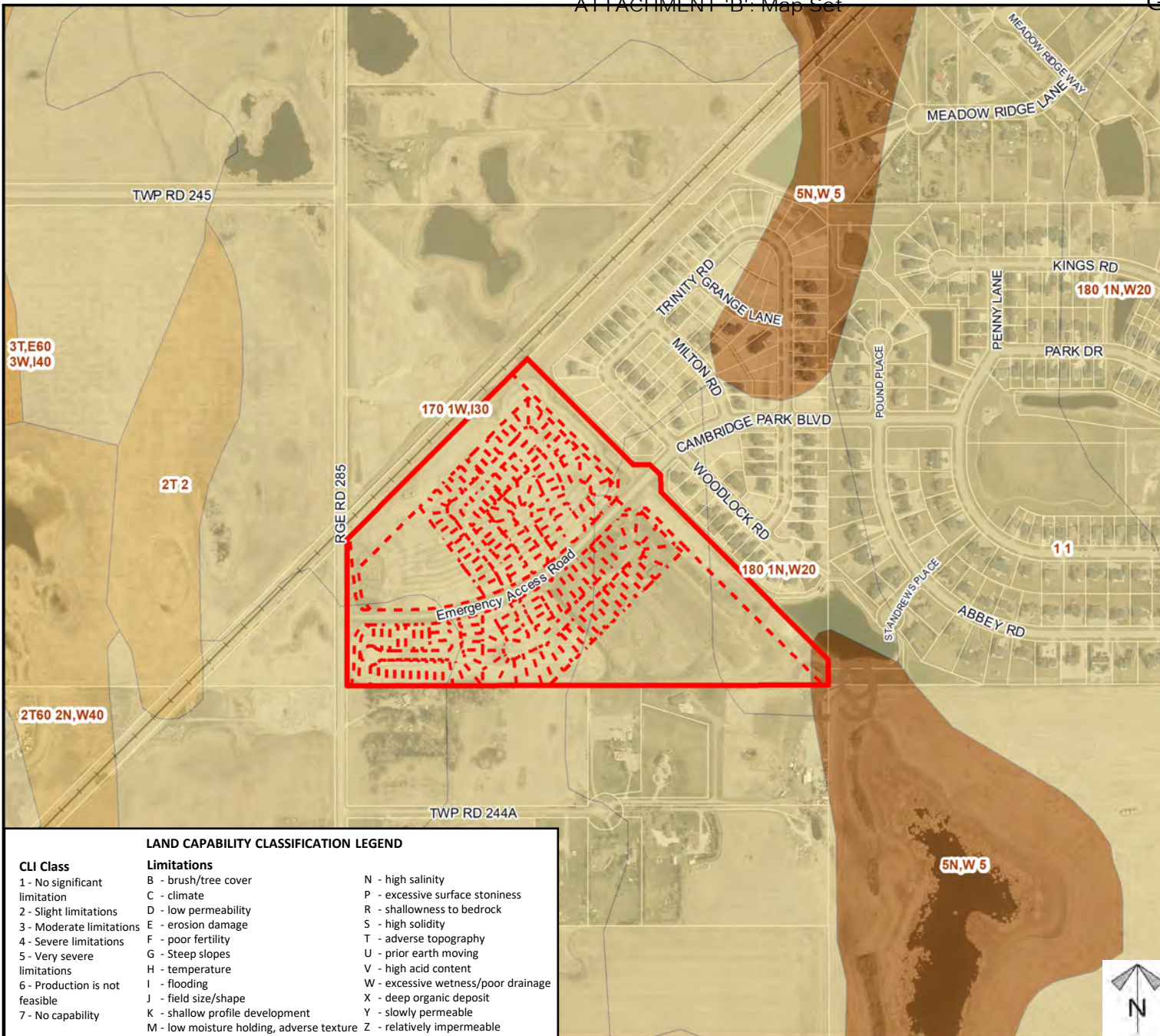
Soil Classifications

ASP Amendment: Conceptual Scheme Amendment: Redesignation Proposal

PL20210078: To amend the South Conrich Conceptual Scheme, including Appendix D, in order to allow residential and commercial uses within a portion of Cell D.

PL20210079: To amend the Conrich Area Structure Plan to change a portion of the subject lands from Highway-Business to Residential-Form to Be Determined, to allow residential use.

PL20210080: To the redesignate the subject lands from Business, Local Campus District (B-LOC) to Direct Control District (DC), Special, Public Services District (S-PUB), and Commercial, Mixed Urban District (C-MIX) to facilitate future subdivision.



LAND CAPABILITY CLASSIFICATION LEGEND

CLI Class	Limitations	
1 - No significant limitation	B - brush/tree cover	N - high salinity
2 - Slight limitations	C - climate	P - excessive surface stoniness
3 - Moderate limitations	D - low permeability	R - shallowness to bedrock
4 - Severe limitations	E - erosion damage	S - high solidity
5 - Very severe limitations	F - poor fertility	T - adverse topography
	G - Steep slopes	U - prior earth moving
	H - temperature	V - high acid content
6 - Production is not feasible	I - flooding	W - excessive wetness/poor drainage
7 - No capability	J - field size/shape	X - deep organic deposit
	K - shallow profile development	Y - slowly permeable
	M - low moisture holding, adverse texture	Z - relatively impermeable



Division: 6
Roll: 04329003
File: PL20210078/79/80
Printed: April 13, 2022
Legal: A portion of NW-29-24-28-W04M

Landowner Circulation Area

ASP Amendment; Conceptual Scheme Amendment; Redesignation Proposal

PL20210078: To amend the South Conrich Conceptual Scheme, including Appendix D, in order to allow residential and commercial uses within a portion of Cell D.

PL20210079: To amend the Conrich Area Structure Plan to change a portion of the subject lands from Highway-Business to Residential-Form to Be Determined, to allow residential use.

PL20210080: To the redesignate the subject lands from Business, Local Campus District (B-LOC) to Direct Control District (DC), Special, Public Services District (S-PUB), and Commercial, Mixed Urban District (C-MIX) to facilitate future subdivision.

Legend

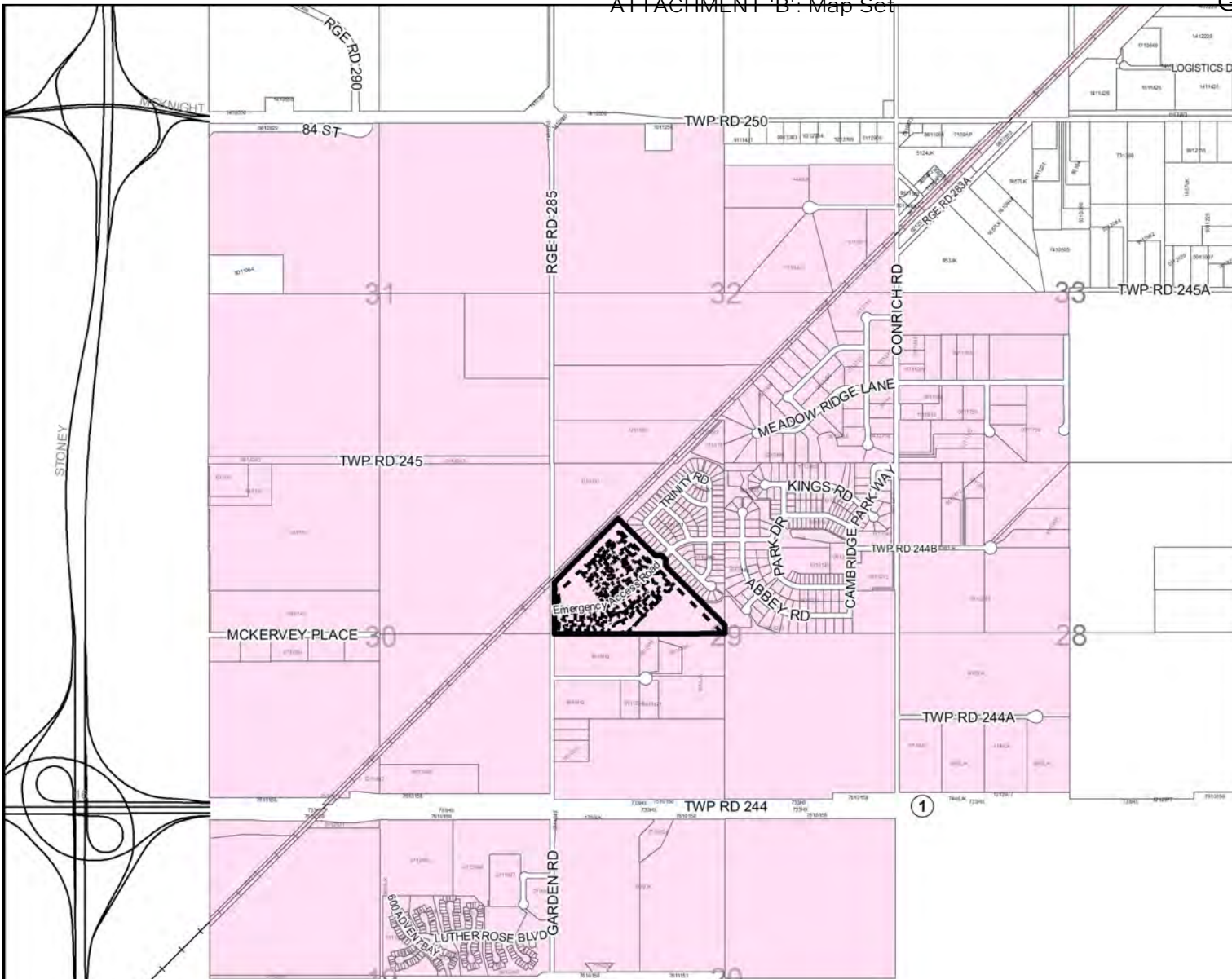
Support



Not Support



Division: 6
 Roll: 04329003
 File: PL20210078/79/80
 Printed: April 13, 2022
 Legal: A portion of NW-29-24-28-W04M



Note: First two digits of the Plan Number indicate the year of subdivision registration.

Plan numbers that include letters were registered before 1973 and do not reference a year.

