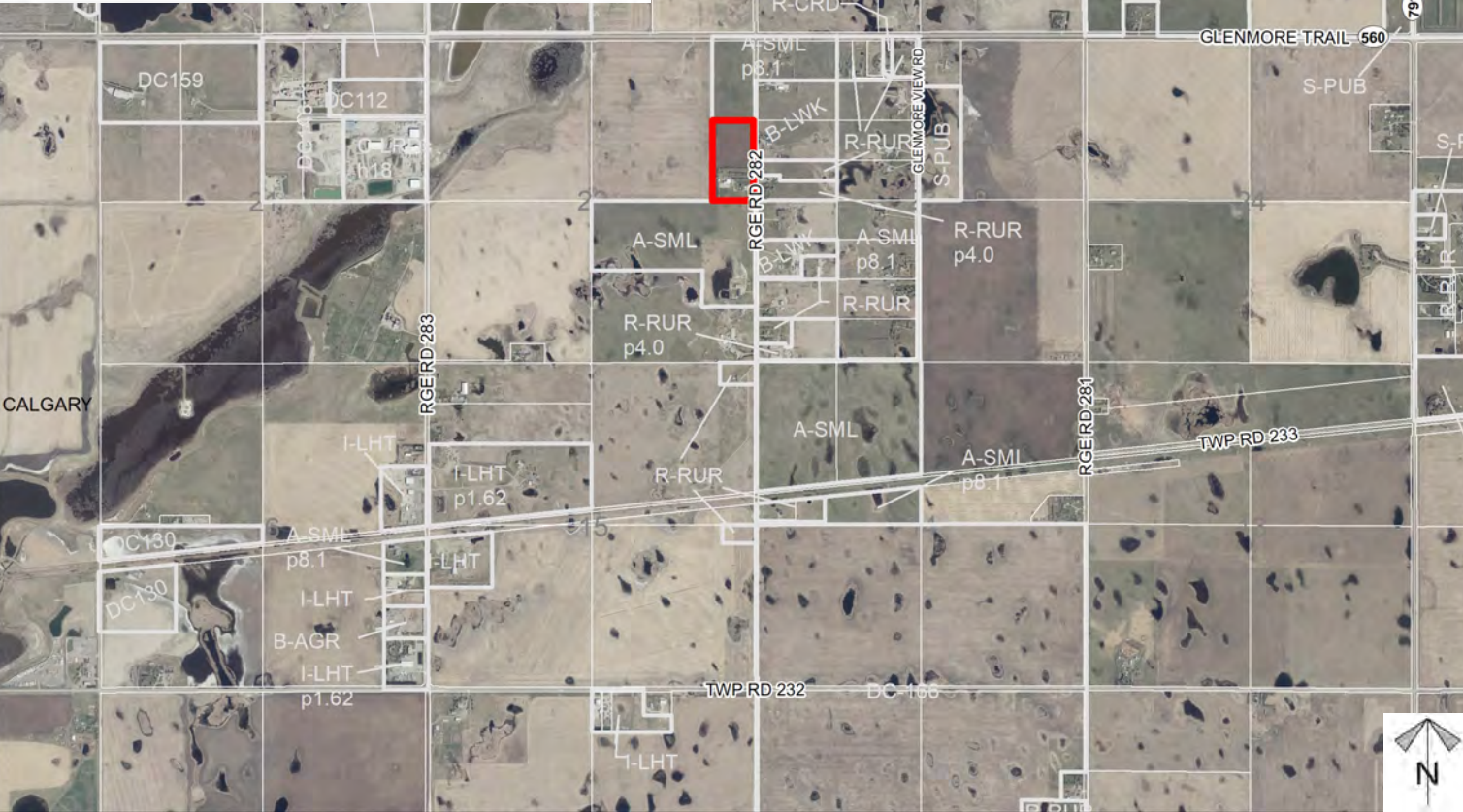
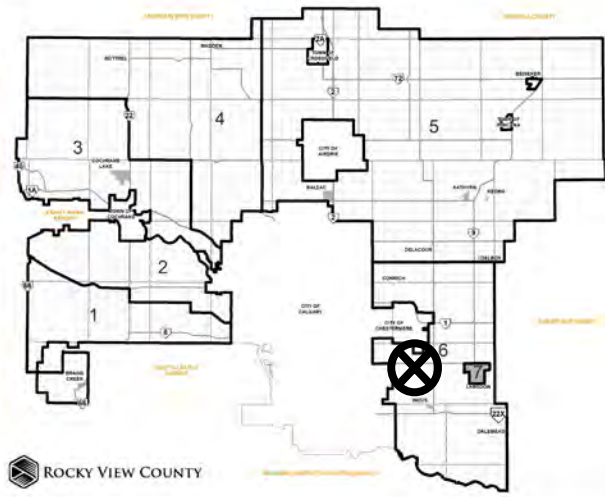


Location & Context

Redesignation Proposal

To redesignate the subject lands from Agricultural, Small Parcel District (A-SML p. 8.1) to Business, Live-Work District (B-LWK p. 8.1) to accommodate future commercial development.



Division: 6
 Roll: 03322005
 File: PL20210188
 Printed: Nov 15, 2021
 Legal: Lot:1 Block:1
 Plan:2010019 within NE-22-23-28-W04M

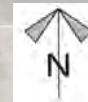
Development Proposal

Redesignation Proposal

To redesignate the subject lands from Agricultural, Small Parcel District (A-SML p. 8.1) to Business, Live-Work District (B-LWK p. 8.1) to accommodate future commercial development.

A-SML p. 8.1 → B-LWK p 8.1
8.10 ha (20.02 ac)

RGE RD 282



Division: 6
Roll: 03322005
File: PL20210188
Printed: Nov 15, 2021
Legal: Lot:1 Block:1
Plan:2010019 within NE-22-23-28-W04M

Environmental

Redesignation Proposal

To redesignate the subject lands from Agricultural, Small Parcel District (A-SML p. 8.1) to Business, Live-Work District (B-LWK p. 8.1) to accommodate future commercial development.



-  Subject Lands
-  Contour - 2 meters
-  Riparian Setbacks
-  Alberta Wetland Inventory
-  Surface Water

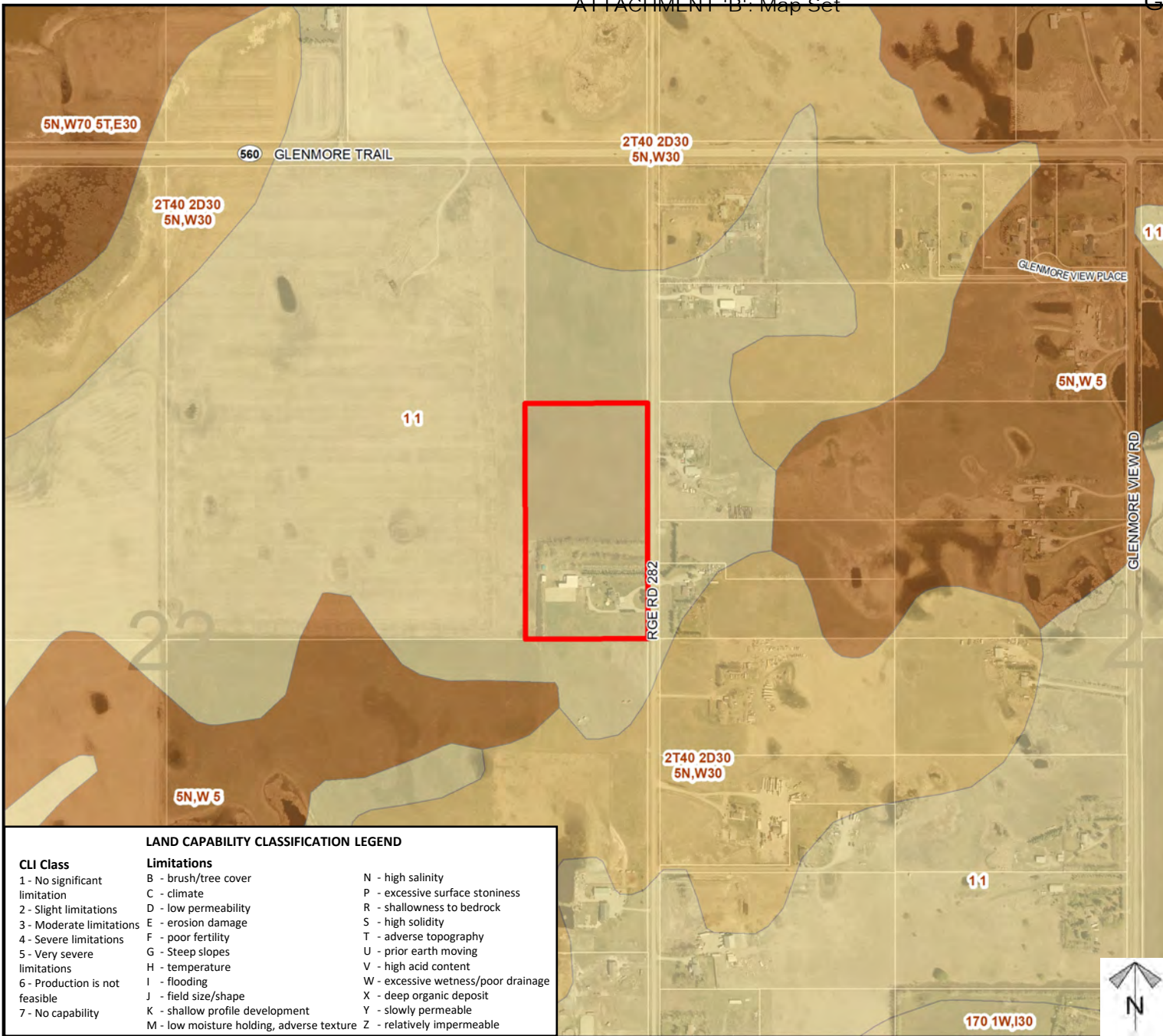


Division: 6
 Roll: 03322005
 File: PL20210188
 Printed: Nov 15, 2021
 Legal: Lot:1 Block:1
 Plan:2010019 within NE-22-23-28-W04M

Soil Classifications

Redesignation Proposal

To redesignate the subject lands from Agricultural, Small Parcel District (A-SML p. 8.1) to Business, Live-Work District (B-LWK p. 8.1) to accommodate future commercial development.



LAND CAPABILITY CLASSIFICATION LEGEND		
CLI Class	Limitations	
1 - No significant limitation	B - brush/tree cover	N - high salinity
2 - Slight limitations	C - climate	P - excessive surface stoniness
3 - Moderate limitations	D - low permeability	R - shallowness to bedrock
4 - Severe limitations	E - erosion damage	S - high solidity
5 - Very severe limitations	F - poor fertility	T - adverse topography
6 - Production is not feasible	G - Steep slopes	U - prior earth moving
7 - No capability	H - temperature	V - high acid content
	I - flooding	W - excessive wetness/poor drainage
	J - field size/shape	X - deep organic deposit
	K - shallow profile development	Y - slowly permeable
	M - low moisture holding, adverse texture	Z - relatively impermeable

Division: 6
 Roll: 03322005
 File: PL20210188
 Printed: Nov 15, 2021
 Legal: Lot: 1 Block: 1
 Plan: 2010019 within NE-22-23-28-W04M



Landowner Circulation Area

Redesignation Proposal

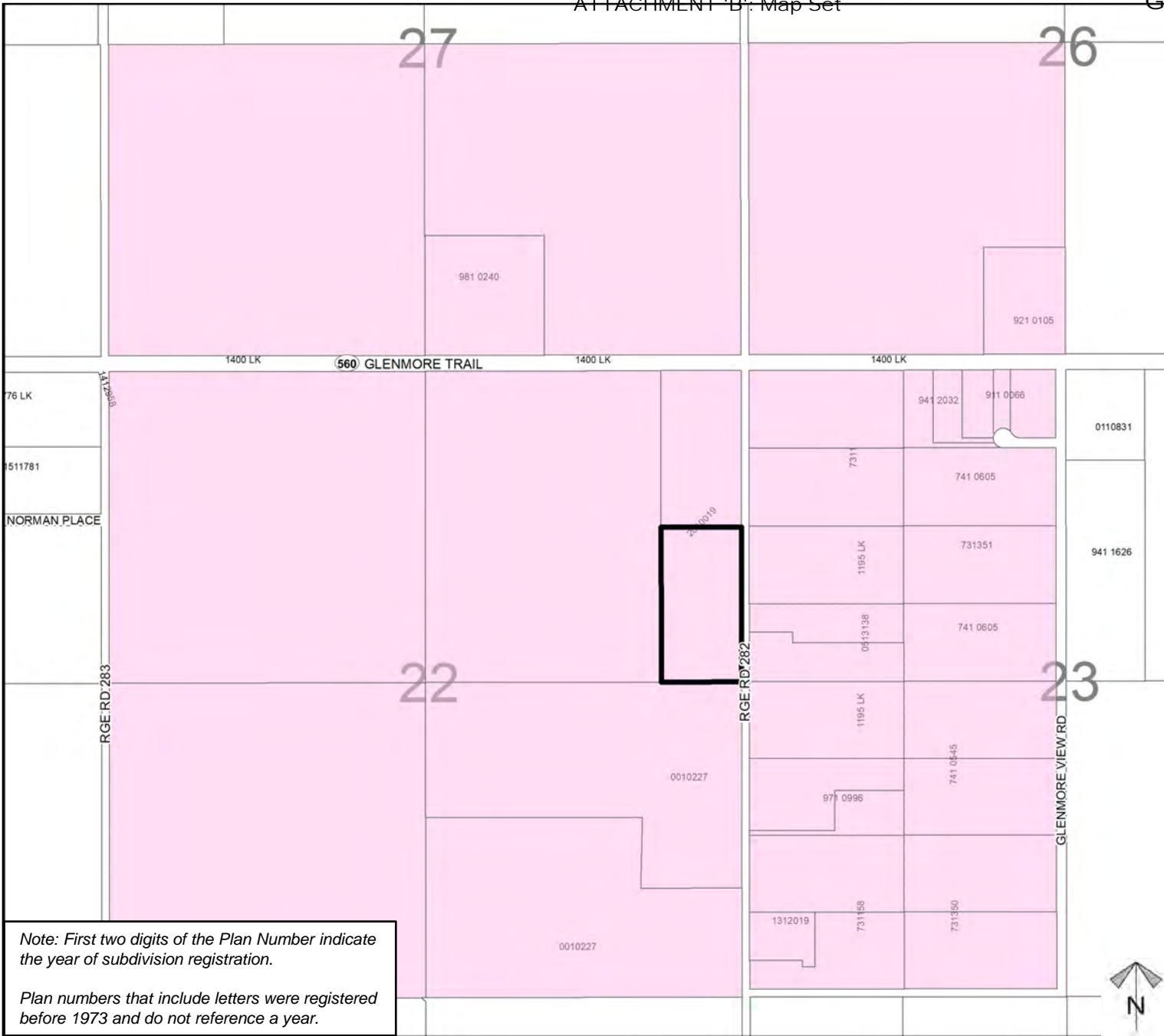
To redesignate the subject lands from Agricultural, Small Parcel District (A-SML p. 8.1) to Business, Live-Work District (B-LWK p. 8.1) to accommodate future commercial development.

Legend

Support



Not Support



Note: First two digits of the Plan Number indicate the year of subdivision registration.

Plan numbers that include letters were registered before 1973 and do not reference a year.

Division: 6
Roll: 03322005
File: PL20210188
Printed: Nov 15, 2021
Legal: Lot: 1 Block: 1
Plan: 2010019 within NE-22-23-28-W04M

