

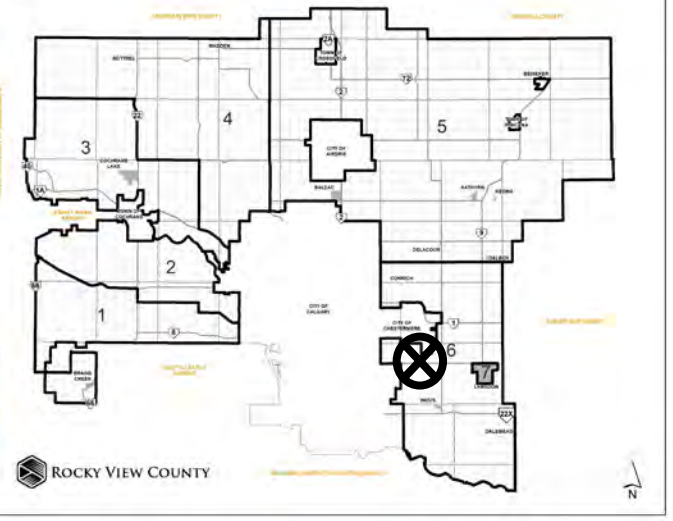
Location & Context

Redesignation Proposal

To redesignate the subject lands from Agricultural, Small Parcel District (A-SML p. 8.1) to Industrial, Light District (I-LHT p. 7.5) to accommodate future industrial development.

Division: 6
Roll: 03322008
File: PL20210187
Printed: Nov 16, 2021
Legal: Lot:2 Block:1
Plan:2010019 within NE-22-23-28-W04M

ATTACHMENT 'B': Map Set



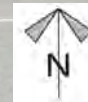
Development Proposal

Redesignation Proposal

To redesignate the subject lands from Agricultural, Small Parcel District (A-SML p. 8.1) to Industrial, Light District (I-LHT p. 7.5) to accommodate future industrial development.

A-SML p. 8.1 → I-LHT p 8.1
7.57 ha (18.71 ac)

RGE RD 282



Division: 6
Roll: 03322008
File: PL20210187
Printed: Nov 16, 2021
Legal: Lot:2 Block:1
Plan:2010019 within NE-22-23-28-W04M

Environmental

Redesignation Proposal

To redesignate the subject lands from Agricultural, Small Parcel District (A-SML p. 8.1) to Industrial, Light District (I-LHT p. 7.5) to accommodate future industrial development.



-  Subject Lands
-  Contour - 2 meters
-  Riparian Setbacks
-  Alberta Wetland Inventory
-  Surface Water

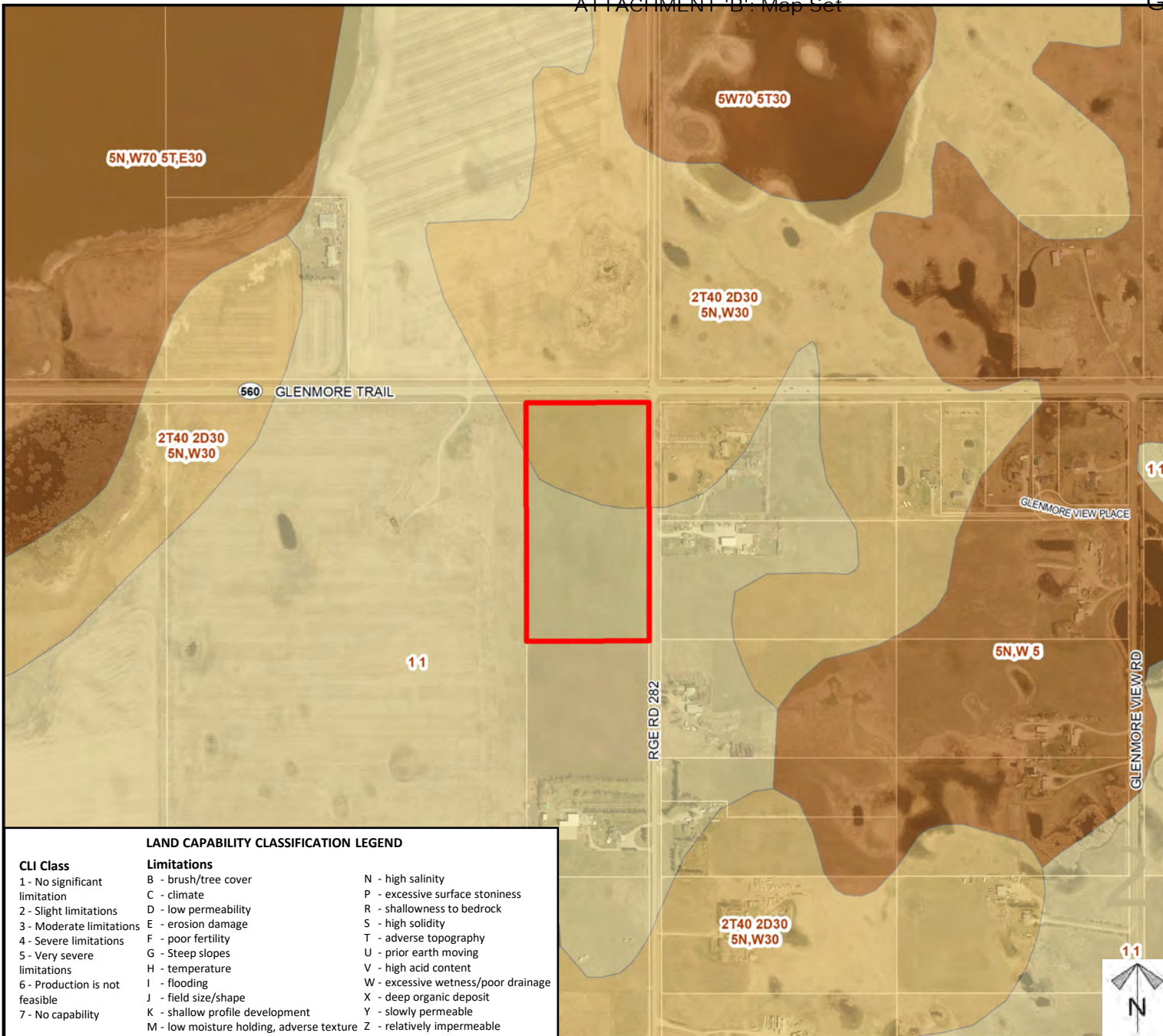


Division: 6
 Roll: 03322008
 File: PL20210187
 Printed: Nov 16, 2021
 Legal: Lot:2 Block:1
 Plan:2010019 within NE-22-23-28-W04M

Soil Classifications

Redesignation Proposal

To redesignate the subject lands from Agricultural, Small Parcel District (A-SML p. 8.1) to Industrial, Light District (I-LHT p. 7.5) to accommodate future industrial development.



LAND CAPABILITY CLASSIFICATION LEGEND

CLI Class	Limitations	
1 - No significant limitation	B - brush/tree cover	N - high salinity
2 - Slight limitations	C - climate	P - excessive surface stoniness
3 - Moderate limitations	D - low permeability	R - shallowness to bedrock
4 - Severe limitations	E - erosion damage	S - high solidity
5 - Very severe limitations	F - poor fertility	T - adverse topography
6 - Production is not feasible	G - Steep slopes	U - prior earth moving
7 - No capability	H - temperature	V - high acid content
	I - flooding	W - excessive wetness/poor drainage
	J - field size/shape	X - deep organic deposit
	K - shallow profile development	Y - slowly permeable
	M - low moisture holding, adverse texture	Z - relatively impermeable

Division: 6
 Roll: 03322008
 File: PL20210187
 Printed: Nov 16, 2021
 Legal: Lot:2 Block:1
 Plan:2010019 within NE-22-23-28-W04M

Landowner Circulation Area

Redesignation Proposal

To redesignate the subject lands from Agricultural, Small Parcel District (A-SML p. 8.1) to Industrial, Light District (I-LHT p. 7.5) to accommodate future industrial development.

Legend

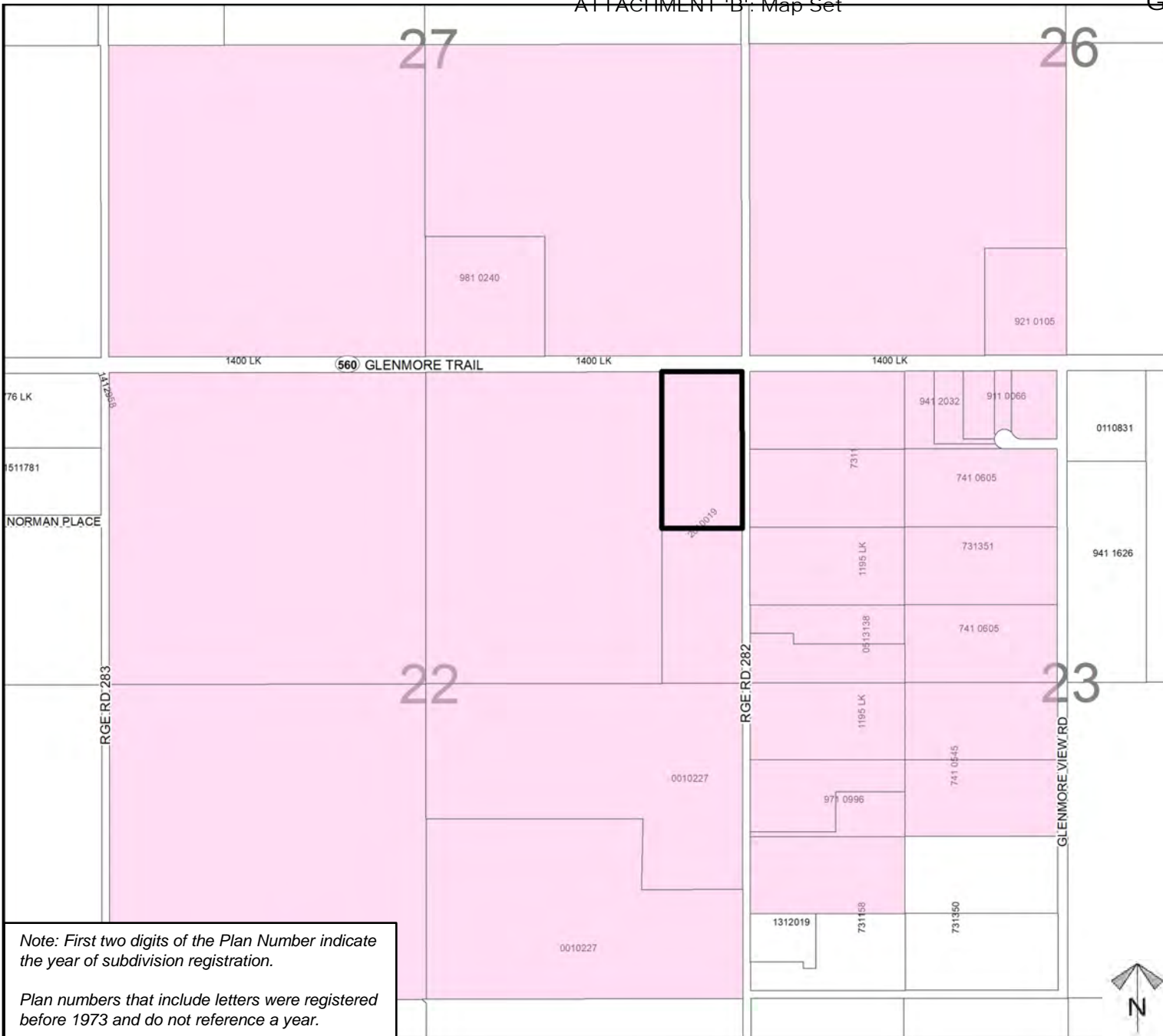
Support



Opposition



Division: 6
Roll: 03322008
File: PL20210187
Printed: Nov 16, 2021
Legal: Lot:2 Block:1
Plan:2010019 within NE-22-
23-28-W04M



Note: First two digits of the Plan Number indicate the year of subdivision registration.

Plan numbers that include letters were registered before 1973 and do not reference a year.