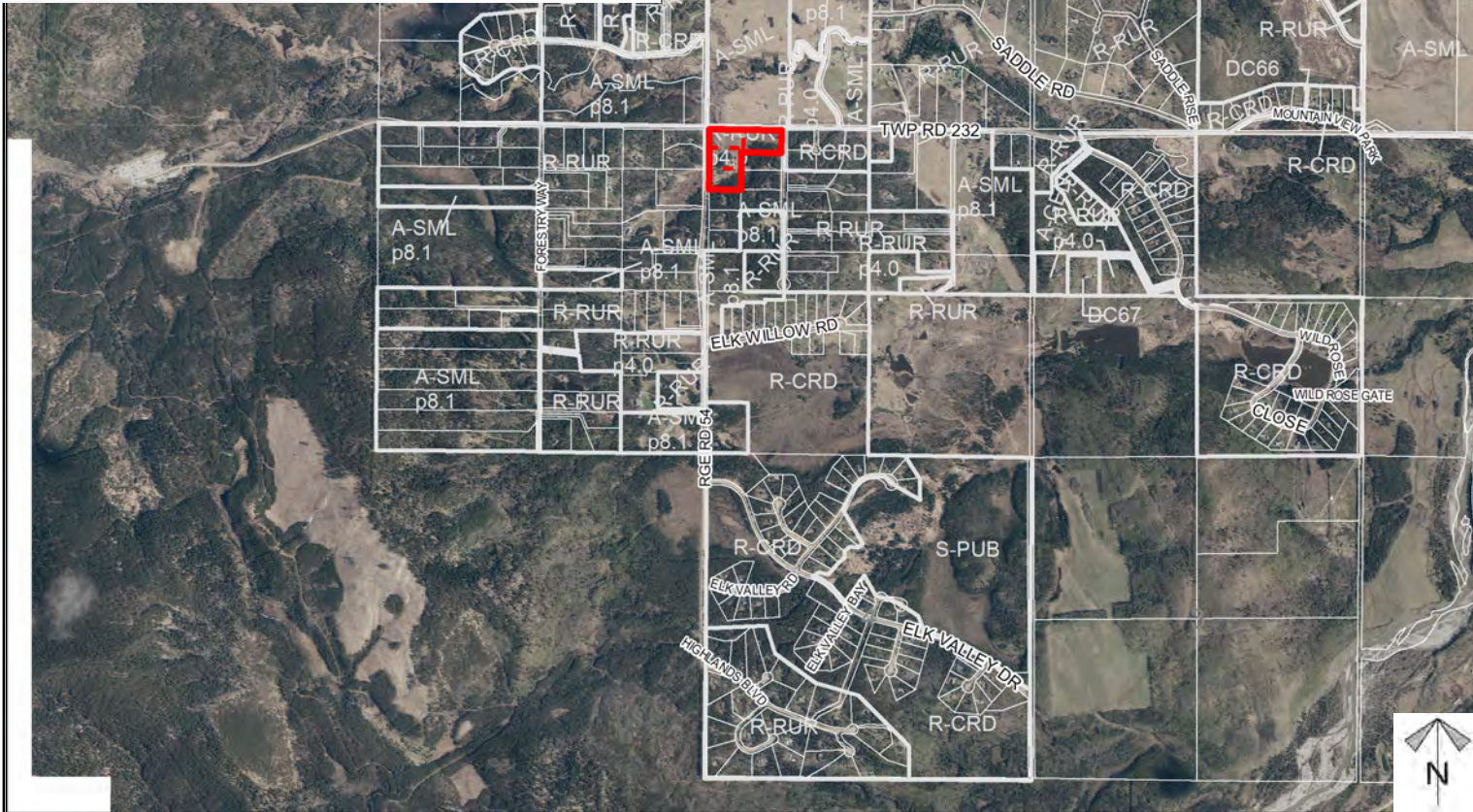
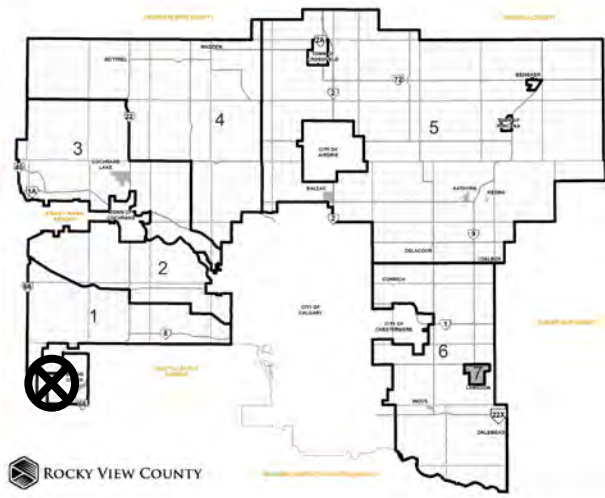


Location & Context

Redesignation Proposal

To redesignate the subject lands from Residential, Rural District (R-RUR p4.0) to Residential, Rural District (R-RUR) to facilitate future subdivision.



Division: 1
 Roll: 03909064
 File: PL20220024
 Printed: Feb 25, 2022
 Legal: Lot:8 Plan:9813102
 within NW-09-23-05-W05M

TWP RD 232

RGE RD 54

BREEZEWOOD BAY

R-RUR p4.0 → R-RUR
± 6.88 hectares
(± 17.00 acres)

Development Proposal

Redesignation Proposal

To redesignate the subject lands from Residential, Rural District (R-RUR p4.0) to Residential, Rural District (R-RUR) to facilitate future subdivision.

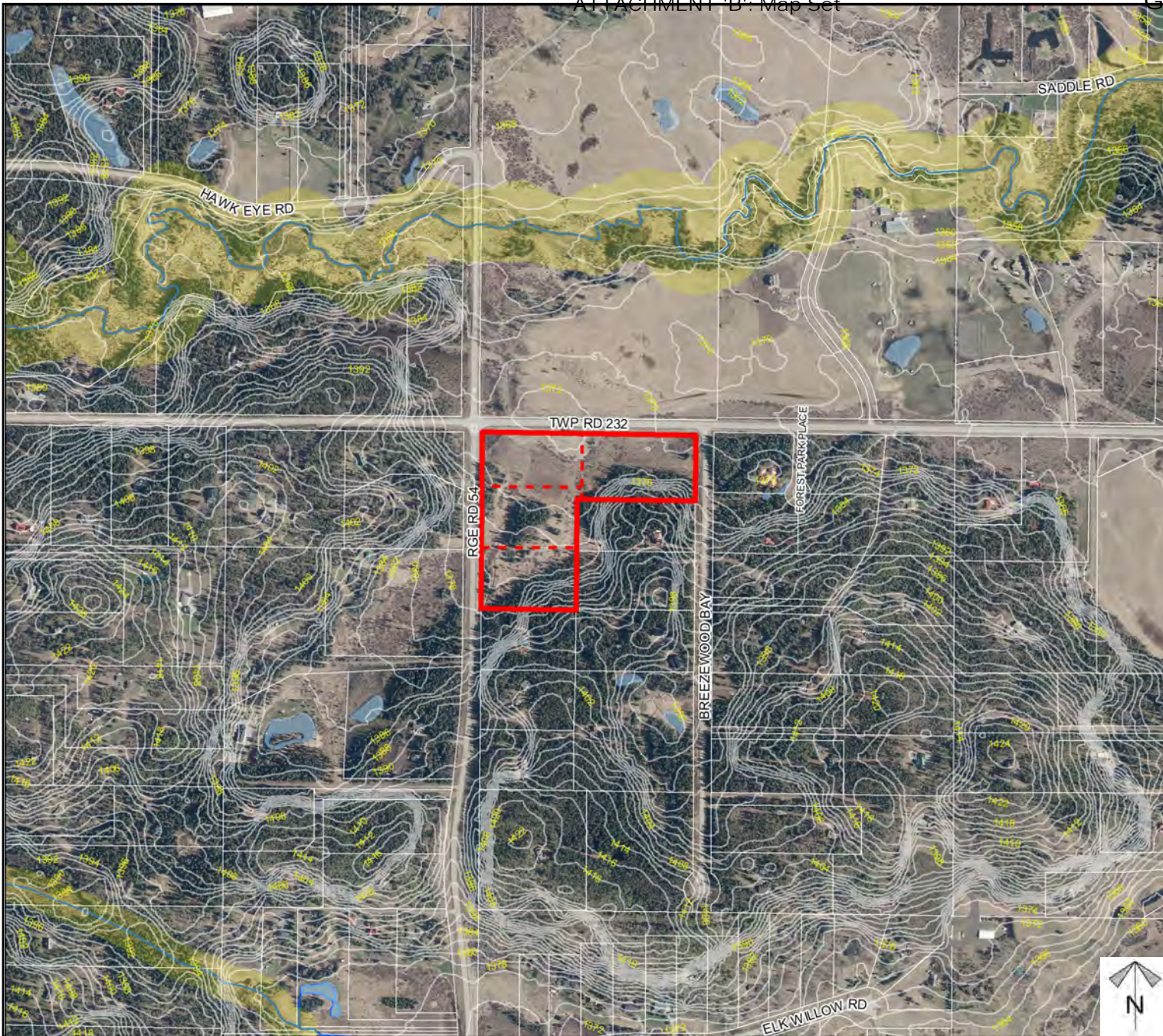
Division: 1
Roll: 03909064
File: PL20220024
Printed: Feb 25, 2022
Legal: Lot:8 Plan:9813102
within NW-09-23-05-W05M



Environmental

Redesignation Proposal

To redesignate the subject lands from Residential, Rural District (R-RUR p4.0) to Residential, Rural District (R-RUR) to facilitate future subdivision.



-  Subject Lands
-  Contour - 2 meters
-  Riparian Setbacks
-  Alberta Wetland Inventory
-  Surface Water

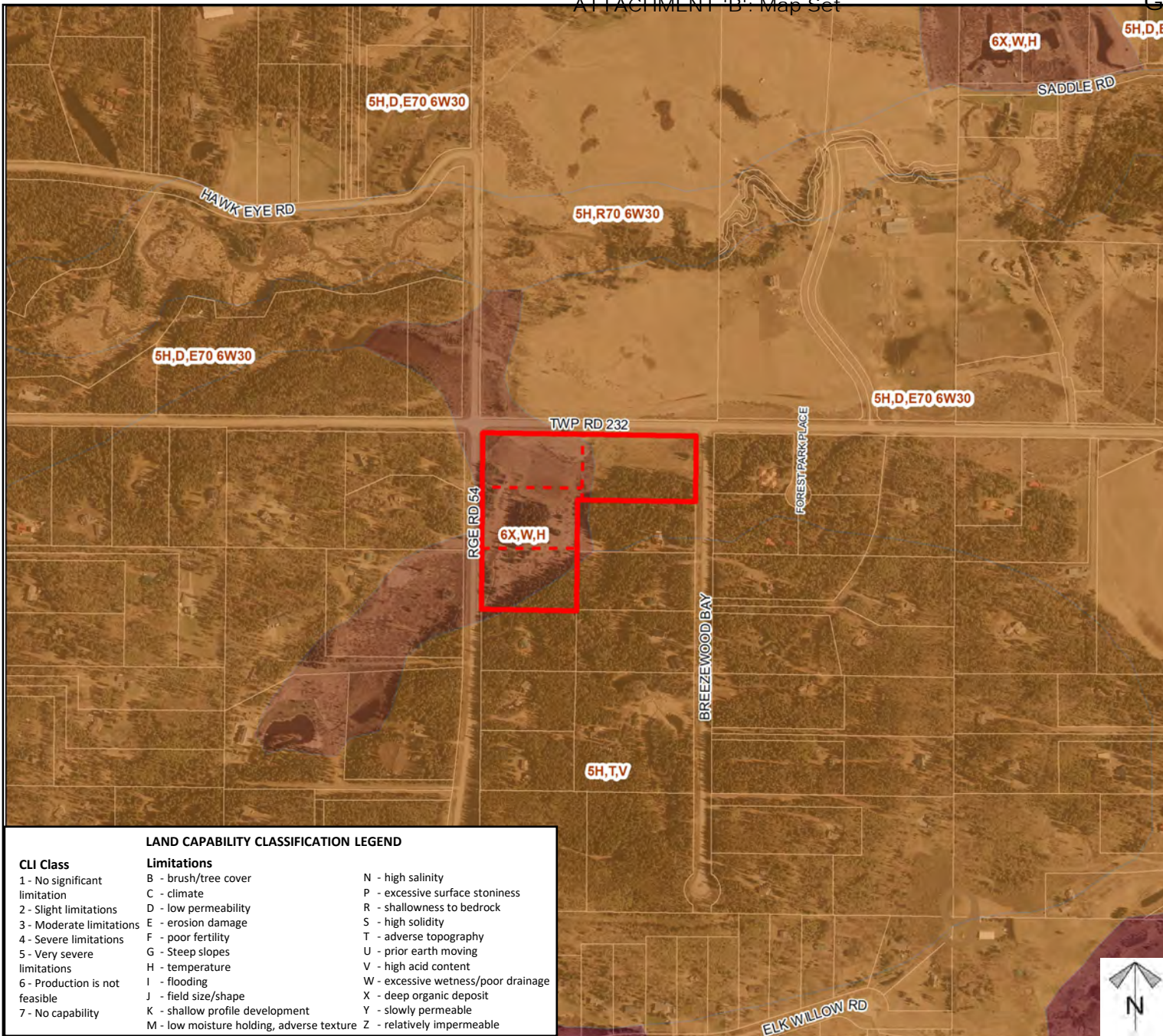


Division: 1
 Roll: 03909064
 File: PL20220024
 Printed: Feb 25, 2022
 Legal: Lot:8 Plan:9813102
 within NW-09-23-05-W05M

Soil Classifications

Redesignation Proposal

To redesignate the subject lands from Residential, Rural District (R-RUR p4.0) to Residential, Rural District (R-RUR) to facilitate future subdivision.



LAND CAPABILITY CLASSIFICATION LEGEND

CLI Class	Limitations	
1 - No significant limitation	B - brush/tree cover	N - high salinity
2 - Slight limitations	C - climate	P - excessive surface stoniness
3 - Moderate limitations	D - low permeability	R - shallowness to bedrock
4 - Severe limitations	E - erosion damage	S - high solidity
5 - Very severe limitations	F - poor fertility	T - adverse topography
6 - Production is not feasible	G - Steep slopes	U - prior earth moving
7 - No capability	H - temperature	V - high acid content
	I - flooding	W - excessive wetness/poor drainage
	J - field size/shape	X - deep organic deposit
	K - shallow profile development	Y - slowly permeable
	M - low moisture holding, adverse texture	Z - relatively impermeable

Division: 1
 Roll: 03909064
 File: PL20220024
 Printed: Feb 25, 2022
 Legal: Lot:8 Plan:9813102
 within NW-09-23-05-W05M

Landowner Circulation Area

Redesignation Proposal

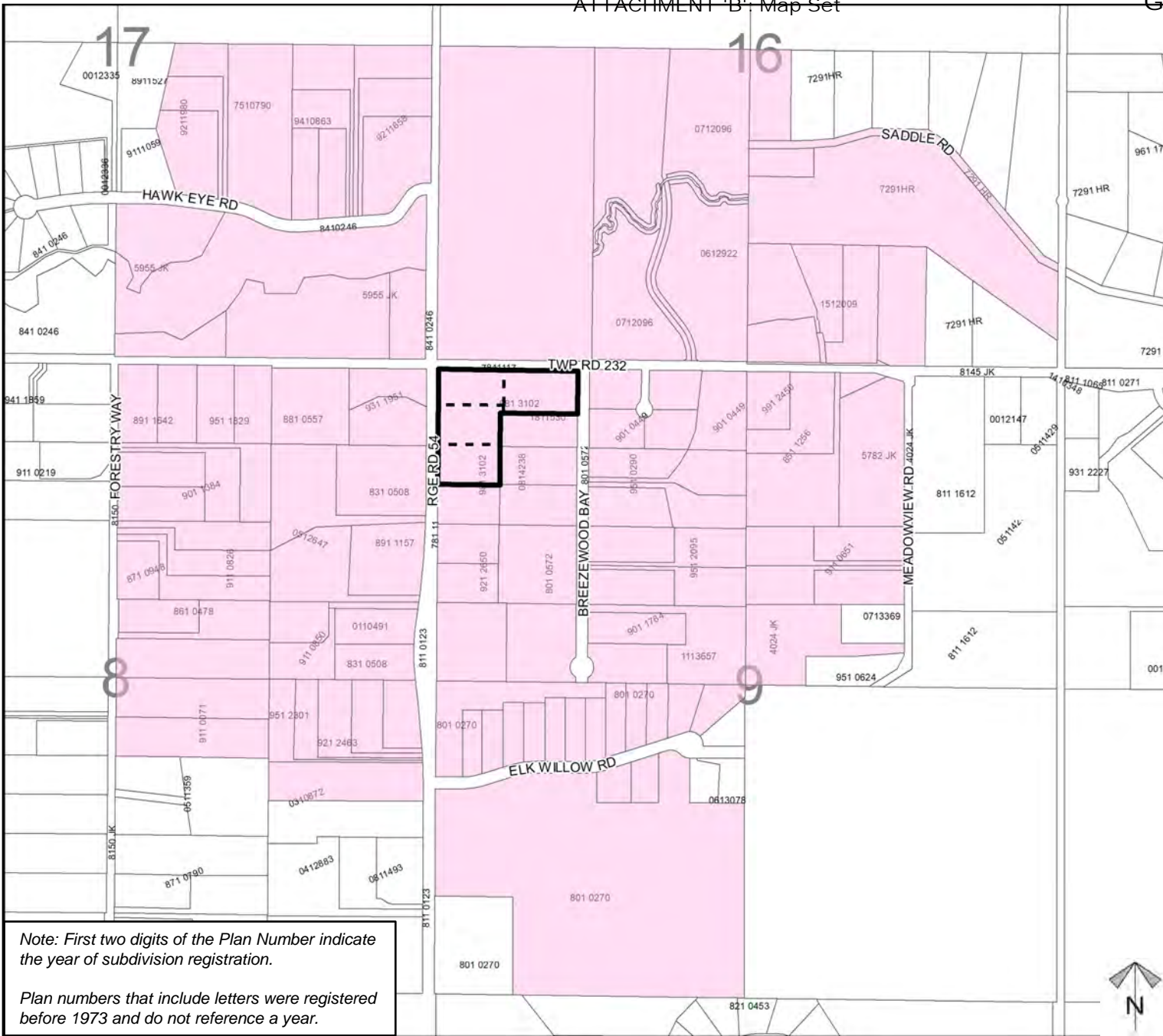
To redesignate the subject lands from Residential, Rural District (R-RUR p4.0) to Residential, Rural District (R-RUR) to facilitate future subdivision.

Legend

Support



Not Support



Note: First two digits of the Plan Number indicate the year of subdivision registration.

Plan numbers that include letters were registered before 1973 and do not reference a year.

Division: 1
Roll: 03909064
File: PL20220024
Printed: Feb 25, 2022
Legal: Lot:8 Plan:9813102
within NW-09-23-05-W05M

