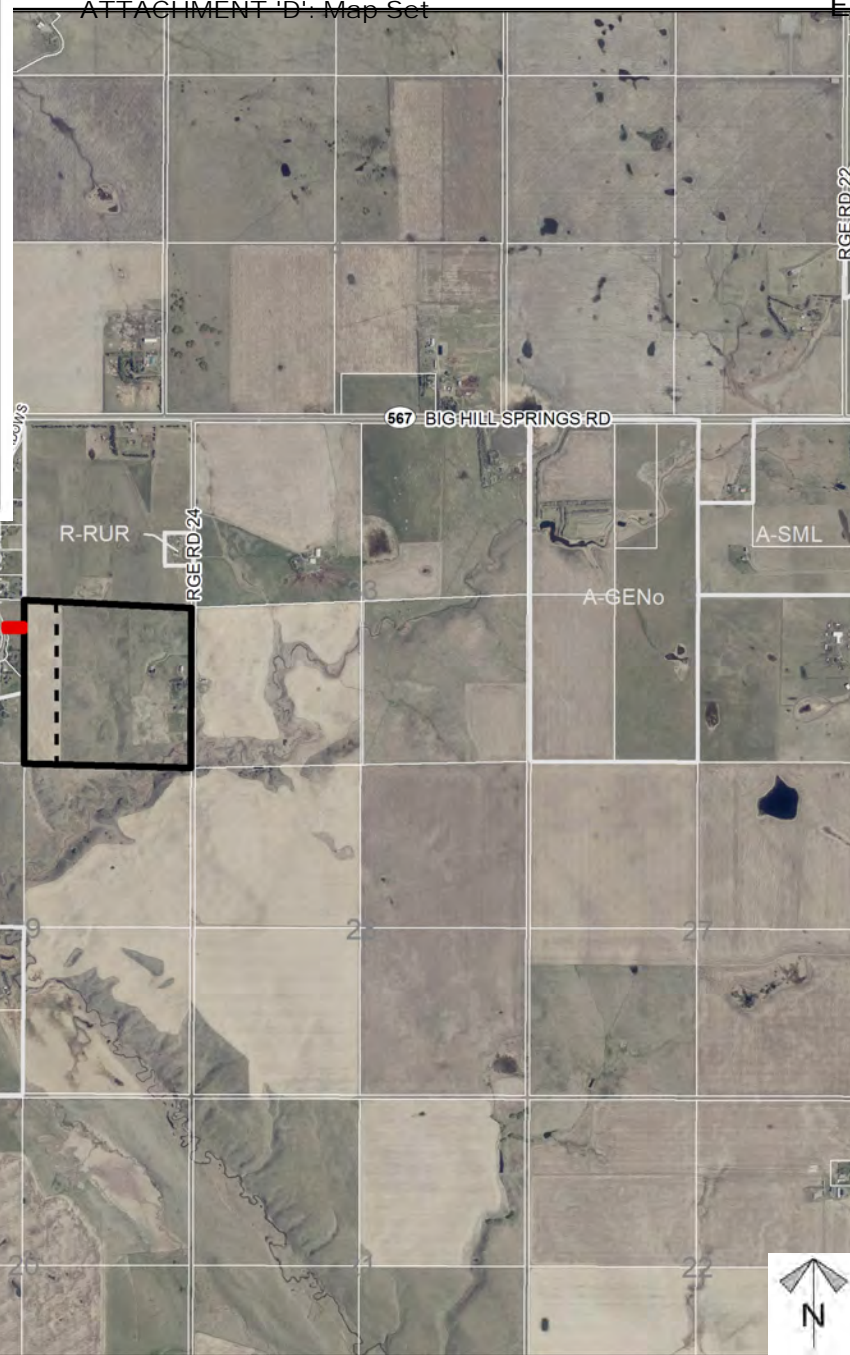
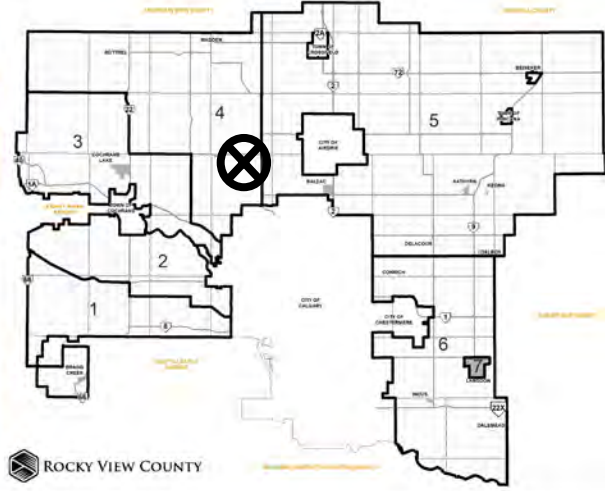


# Location & Context

## Road Allowance Closure Proposal

To close 90-metre (295.2 ft) portion of Road Allowance west of SE-32-26-02-W05M to facilitate future consolidation



Division: 4  
 Roll: 06632003  
 File: PL20210152  
 Printed: March 15, 2022  
 Legal: A portion of SE-32-26-02-W05M

# Development Proposal

## Road Allowance Closure Proposal

To close 90-metre (295.2 ft) portion of Road Allowance west of SE-32-26-02-W05M to facilitate future consolidation

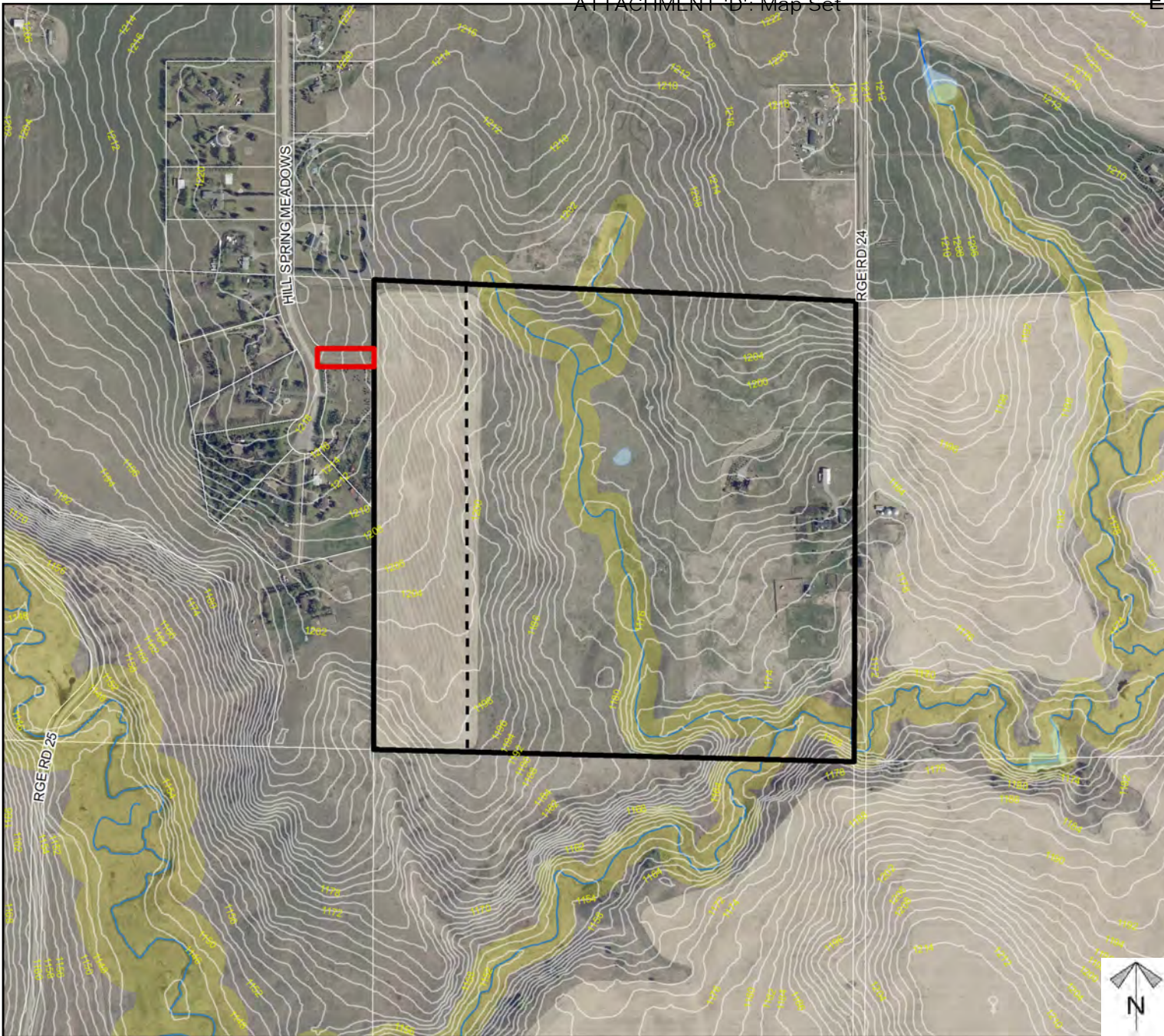


Division: 4  
Roll: 06632003  
File: PL20210152  
Printed: March 15, 2022  
Legal: A portion of SE-32-26-02-W05M

# Environmental

## Road Allowance Closure Proposal

To close 90-meter (295.2 ft) portion of Road Allowance west of SE-32-26-02-W05M to facilitate future consolidation



-  Subject Lands
-  Contour - 2 meters
-  Riparian Setbacks
-  Alberta Wetland Inventory
-  Surface Water

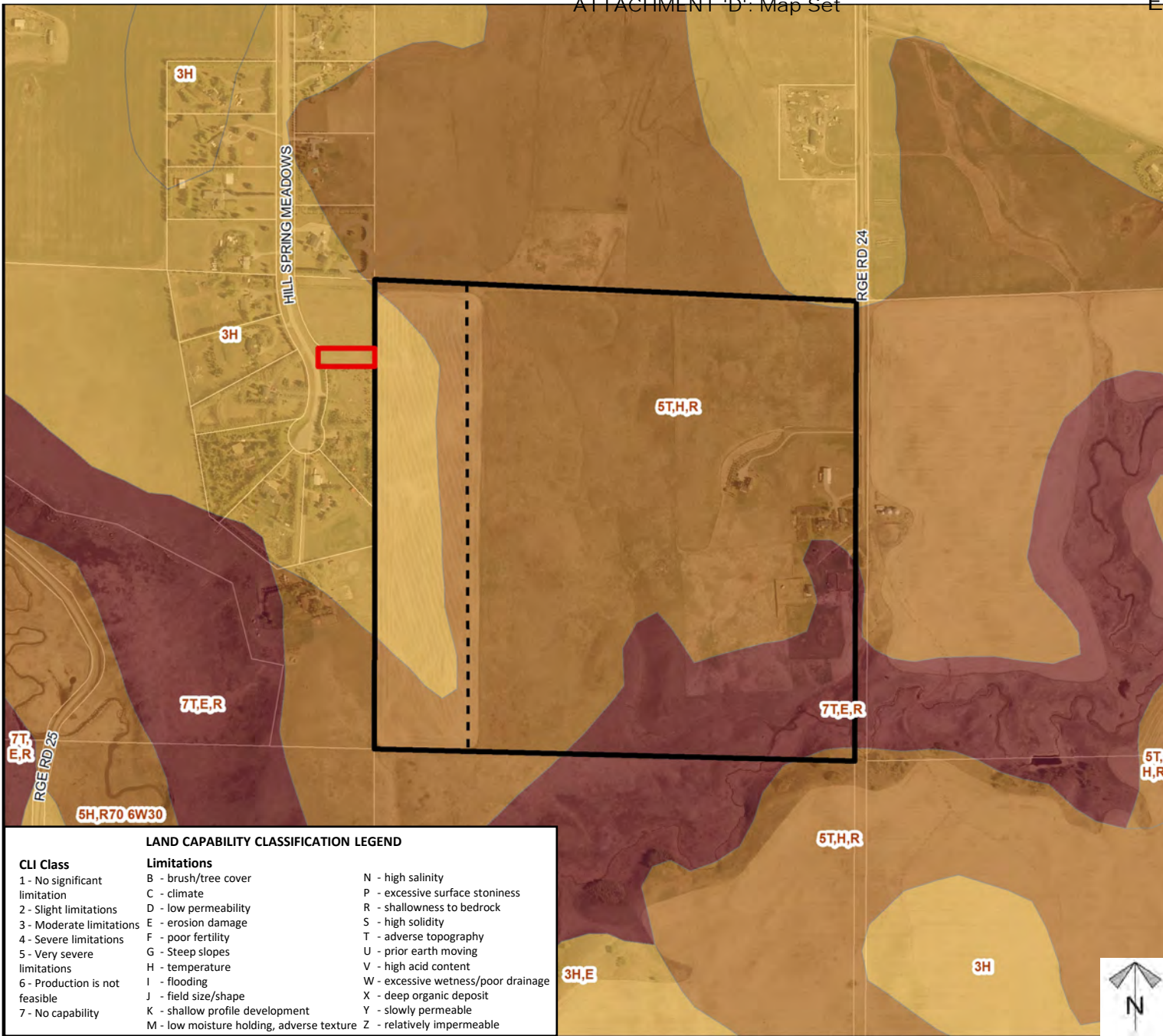
Division: 4  
 Roll: 06632003  
 File: PL20210152  
 Printed: March 15, 2022  
 Legal: A portion of SE-32-26-02-W05M



# Soil Classifications

## Road Allowance Closure Proposal

To close 90-metre (295.2 ft) portion of Road Allowance west of SE-32-26-02-W05M to facilitate future consolidation



### LAND CAPABILITY CLASSIFICATION LEGEND

CLI Class	Limitations	
1 - No significant limitation	B - brush/tree cover	N - high salinity
2 - Slight limitations	C - climate	P - excessive surface stoniness
3 - Moderate limitations	D - low permeability	R - shallowness to bedrock
4 - Severe limitations	E - erosion damage	S - high solidity
5 - Very severe limitations	F - poor fertility	T - adverse topography
6 - Production is not feasible	G - Steep slopes	U - prior earth moving
7 - No capability	H - temperature	V - high acid content
	I - flooding	W - excessive wetness/poor drainage
	J - field size/shape	X - deep organic deposit
	K - shallow profile development	Y - slowly permeable
	M - low moisture holding, adverse texture	Z - relatively impermeable

Division: 4  
 Roll: 06632003  
 File: PL20210152  
 Printed: March 15, 2022  
 Legal: A portion of SE-32-26-02-W05M

# Landowner Circulation Area

## Road Allowance Closure Proposal

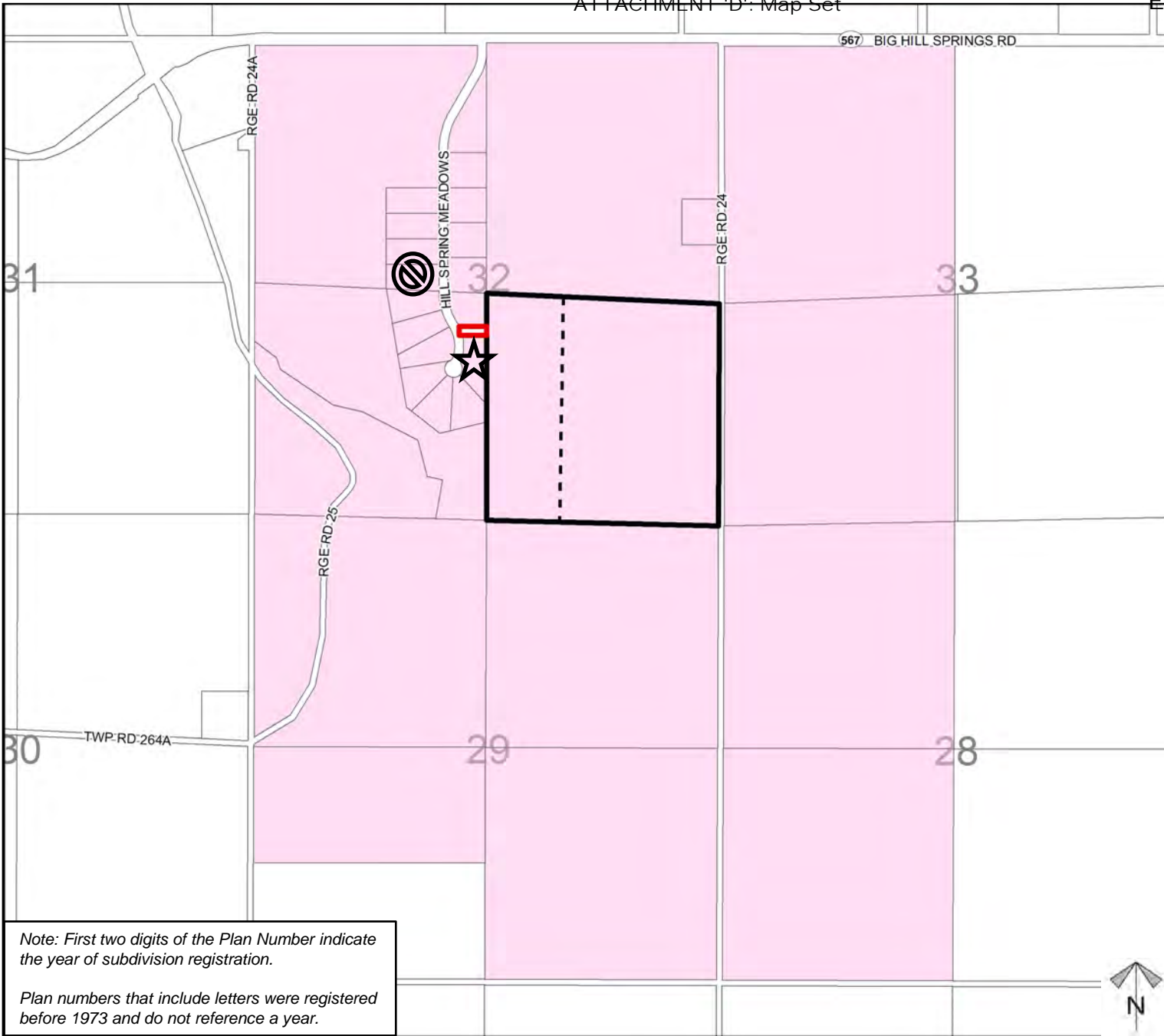
To close 90-metre (295.2 ft) portion of Road Allowance west of SE-32-26-02-W05M to facilitate future consolidation

### Legend

Support



Not Support



Note: First two digits of the Plan Number indicate the year of subdivision registration.

Plan numbers that include letters were registered before 1973 and do not reference a year.

Division: 4  
Roll: 06632003  
File: PL20210152  
Printed: March 15, 2022  
Legal: A portion of SE-32-26-02-W05M

