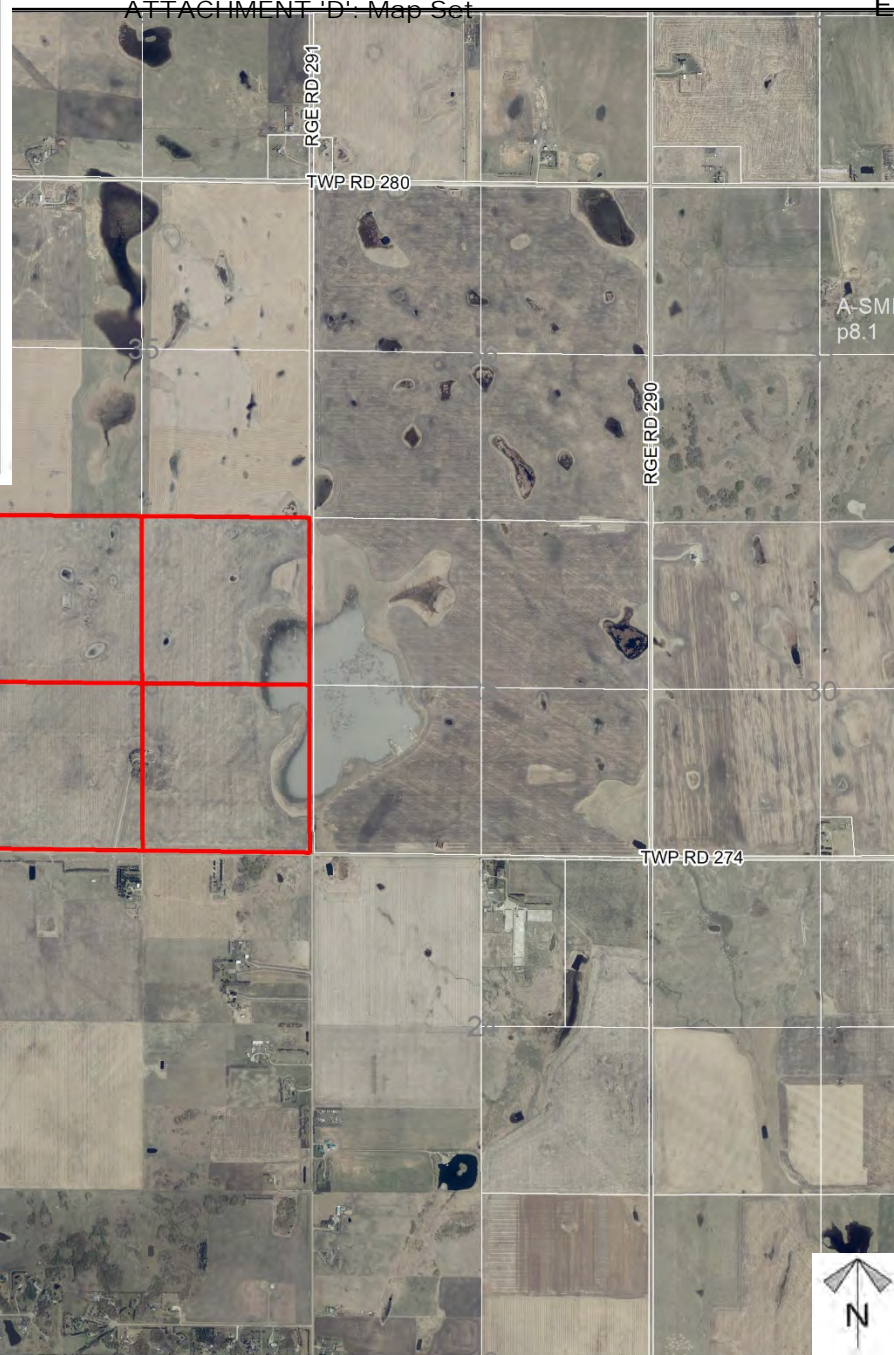
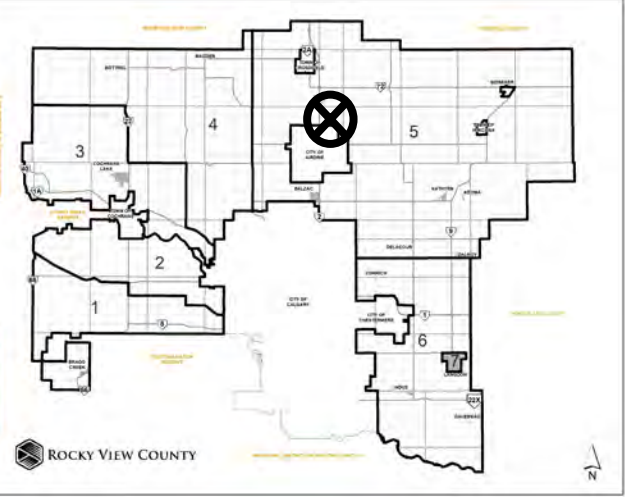


Location & Context

Redesignation Proposal

Redesignation of ±259 hectares (±640 acres) – four quarter sections – from Agricultural, General District (A-GEN) to Direct Control (DC) to allow for a Solar Farm.



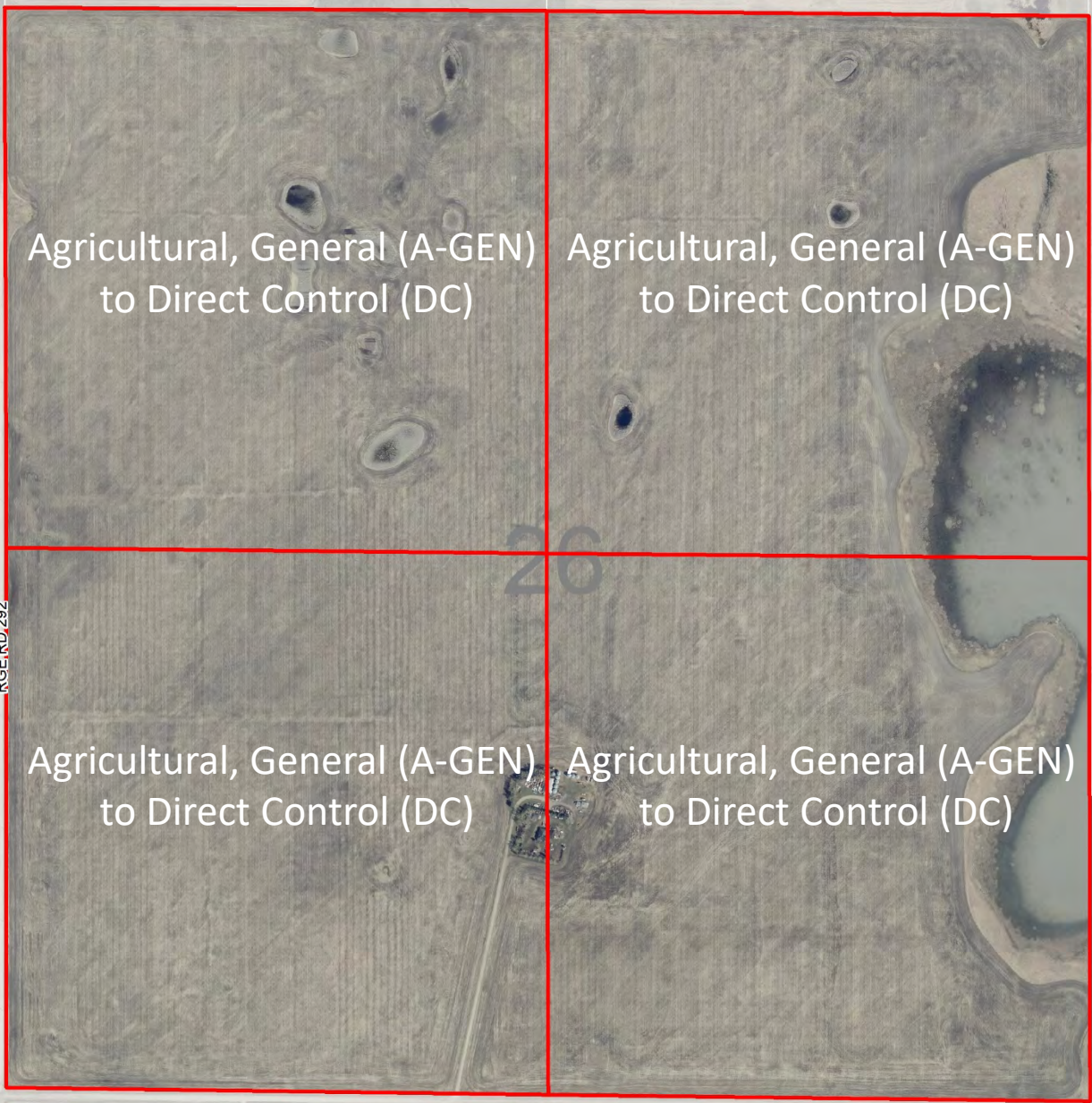
Division: 5
 Roll: 07426001/2/3/4
 File: PL20210102
 Legal: NW/NE/SE/SW-26-27-29-W04M
 Printed: June 24, 2021



Development Proposal

Redesignation Proposal

Redesignation of ±259 hectares (±640 acres) – four quarter sections – from Agricultural, General District (A-GEN) to Direct Control (DC) to allow for a Solar Farm.



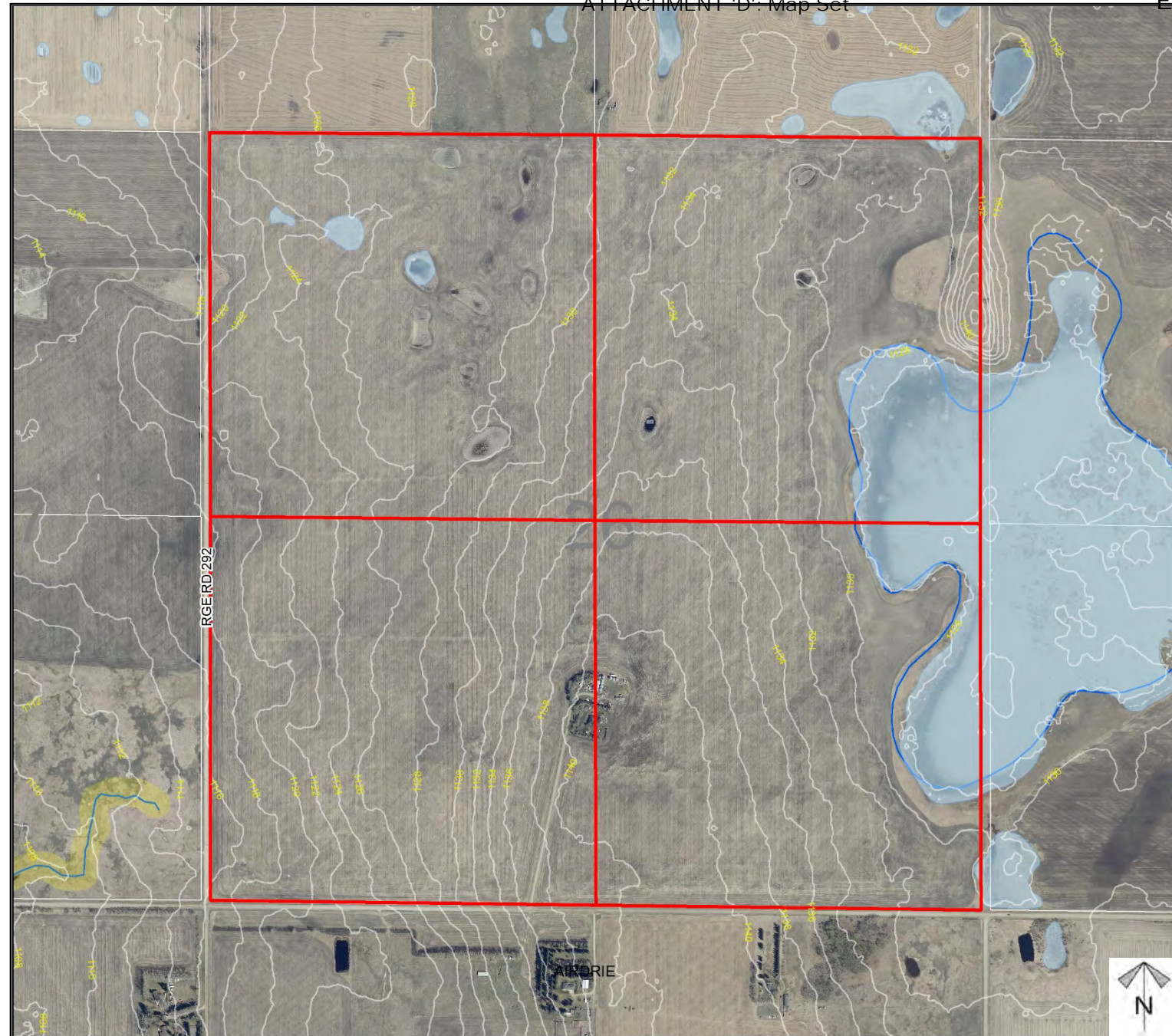
Division: 5
Roll: 07426001/2/3/4
File: PL20210102
Legal: NW/NE/SE/SW-26-27-29-W04M
Printed: June 24, 2021



Environmental

Redesignation Proposal

Redesignation of ±259 hectares (±640 acres) – four quarter sections – from Agricultural, General District (A-GEN) to Direct Control (DC) to allow for a Solar Farm.



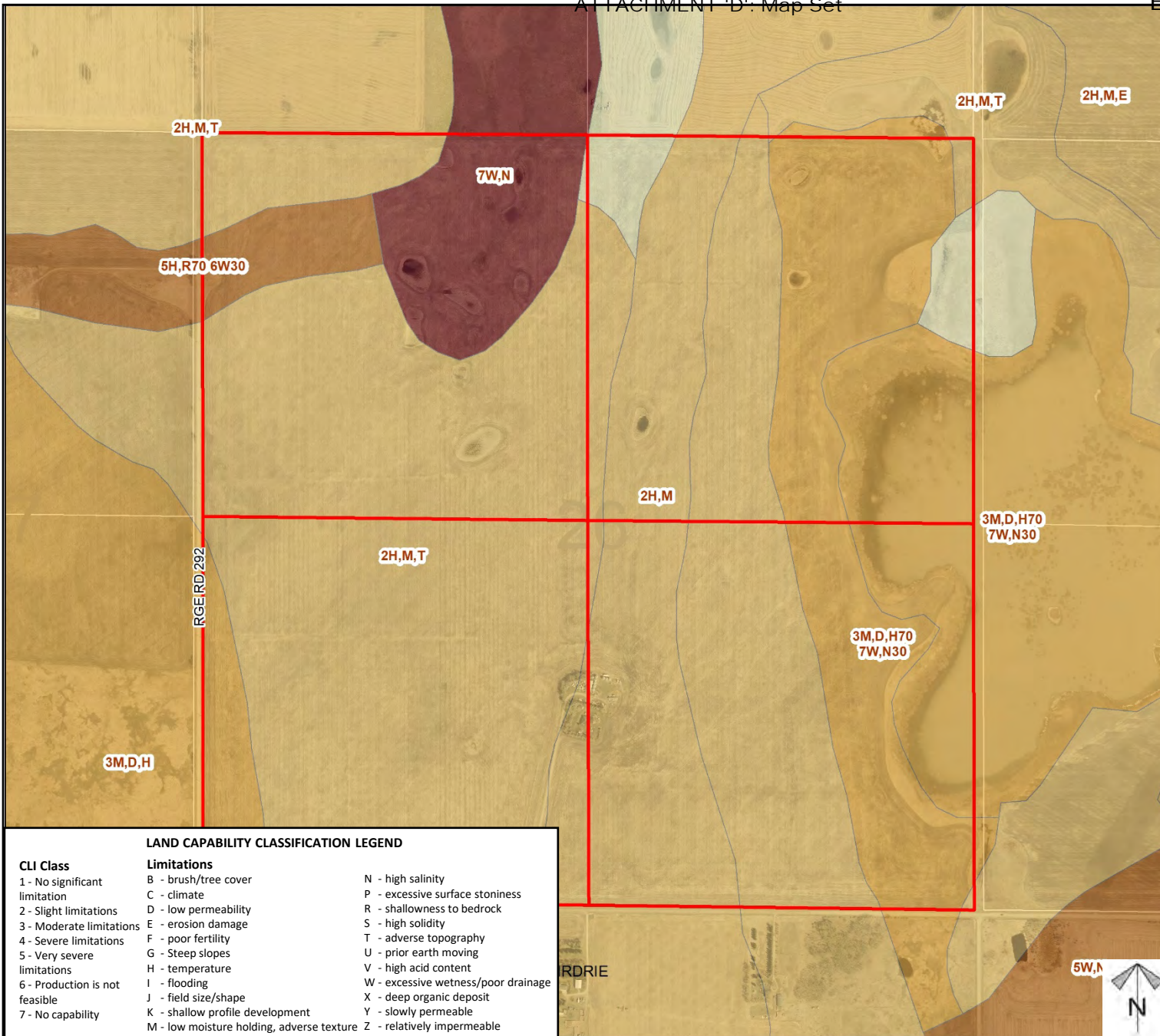
-  Subject Lands
-  Contour - 2 meters
-  Riparian Setbacks
-  Alberta Wetland Inventory
-  Surface Water

Division: 5
 Roll: 07426001/2/3/4
 File: PL20210102
 Legal: NW/NE/SE/SW-26-27-29-W04M
 Printed: June 24, 2021

Soil Classifications

Redesignation Proposal

Redesignation of ±259 hectares (±640 acres) – four quarter sections – from Agricultural, General District (A-GEN) to Direct Control (DC) to allow for a Solar Farm.



LAND CAPABILITY CLASSIFICATION LEGEND

CLI Class	Limitations	
1 - No significant limitation	B - brush/tree cover	N - high salinity
2 - Slight limitations	C - climate	P - excessive surface stoniness
3 - Moderate limitations	D - low permeability	R - shallowness to bedrock
4 - Severe limitations	E - erosion damage	S - high solidity
5 - Very severe limitations	F - poor fertility	T - adverse topography
6 - Production is not feasible	G - Steep slopes	U - prior earth moving
7 - No capability	H - temperature	V - high acid content
	I - flooding	W - excessive wetness/poor drainage
	J - field size/shape	X - deep organic deposit
	K - shallow profile development	Y - slowly permeable
	M - low moisture holding, adverse texture	Z - relatively impermeable




Division: 5
 Roll: 07426001/2/3/4
 File: PL20210102
 Legal: NW/NE/SE/SW-26-27-29-W04M
 Printed: June 24, 2021

Landowner Circulation Area

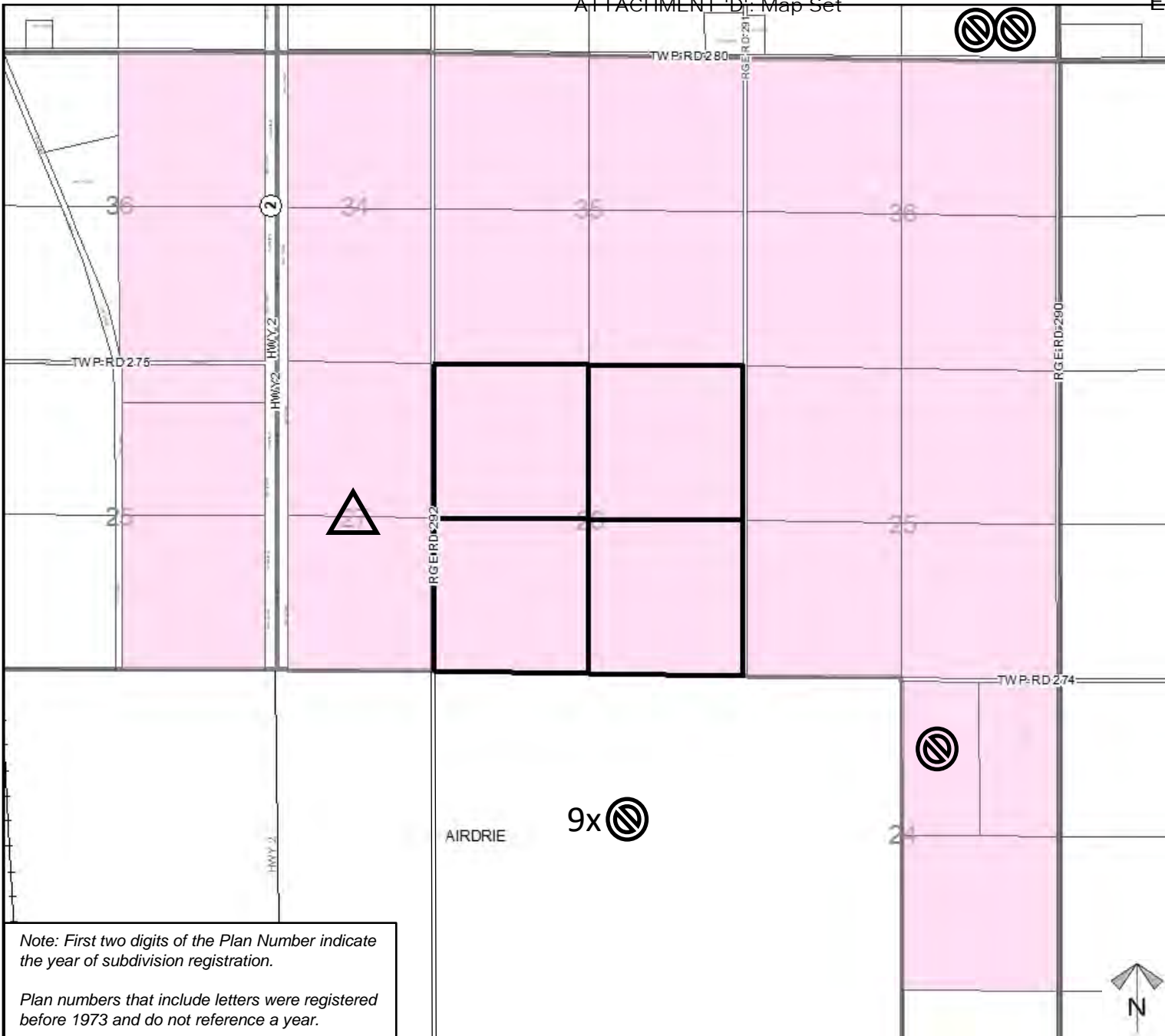
Redesignation Proposal

Redesignation of ±259 hectares (±640 acres) – four quarter sections – from Agricultural, General District (A-GEN) to Direct Control (DC) to allow for a Solar Farm.

Legend

- Support 
- Opposition 
- Concern 

Division: 5
Roll: 07426001/2/3/4
File: PL20210102
Legal: NW/NE/SE/SW-26-27-29-W04M
Printed: June 24, 2021



AIRDRIE 9x 