

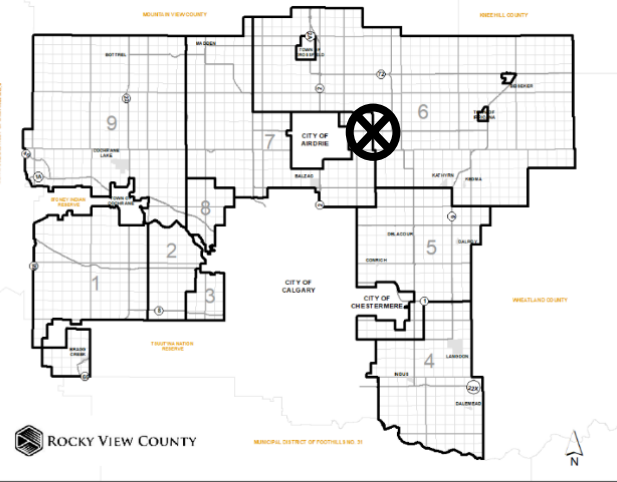
Location & Context

Redesignation Proposal

To redesignate the subject land from Residential, Rural District (R-RUR) to Residential, Country Residential District (R-CRD), in order to facilitate the creation of a ± 2.065 acre new lot with a ± 2.065 acre remainder.

Division: 6
File: PL20200142
Roll: 07315033
Legal: Lot:1 Block:8
Plan:9611667
SE-15-27-28-W04M

Printed: October 15, 2020





Development Proposal

Redesignation Proposal

To redesignate the subject land from Residential, Rural District (R-RUR) to Residential, Country Residential District (R-CRD), in order to facilitate the creation of a ± 2.065 acre new lot with a ± 2.065 acre remainder.

RGE RD 282

Remainder - Lot 2
 ± 2.065 ac

R-RUR → R-CRD

New Lot - Lot 1
 ± 2.065 ac

Division: 6
File: PL20200142
Roll: 07315033
Legal: Lot:1 Block:8
Plan:9611667
SE-15-27-28-W04M

Printed: October 15, 2020

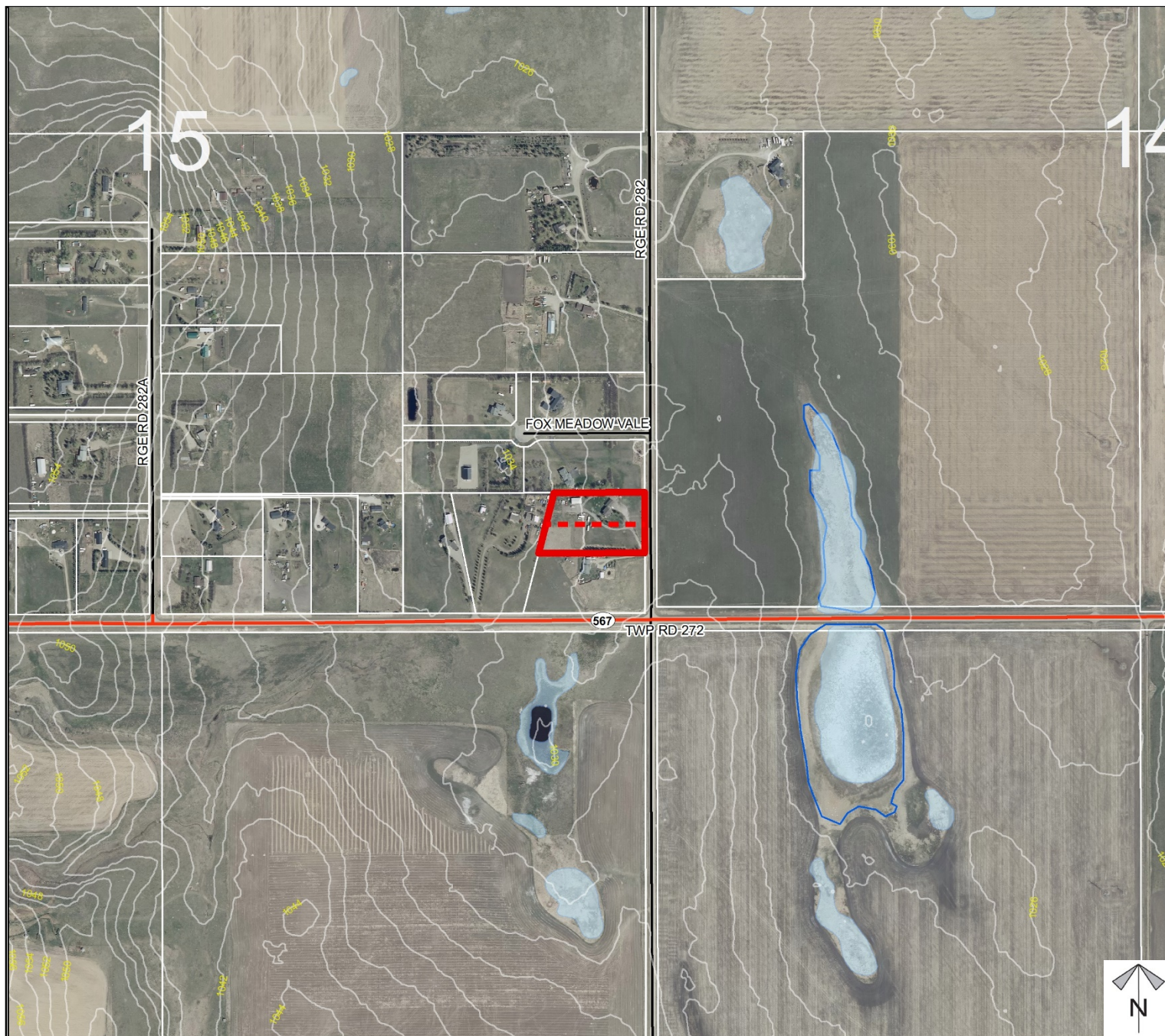




Environmental

Redesignation Proposal

To redesignate the subject land from Residential, Rural District (R-RUR) to Residential, Country Residential District (R-CRD), in order to facilitate the creation of a ± 2.065 acre new lot with a ± 2.065 acre remainder.



- Subject Lands
- Contour - 2 meters
- Riparian Setbacks
- Alberta Wetland Inventory
- Surface Water

Division: 6
File: PL20200142
Roll: 07315033
Legal: Lot:1 Block:8
Plan:9611667
SE-15-27-28-W04M

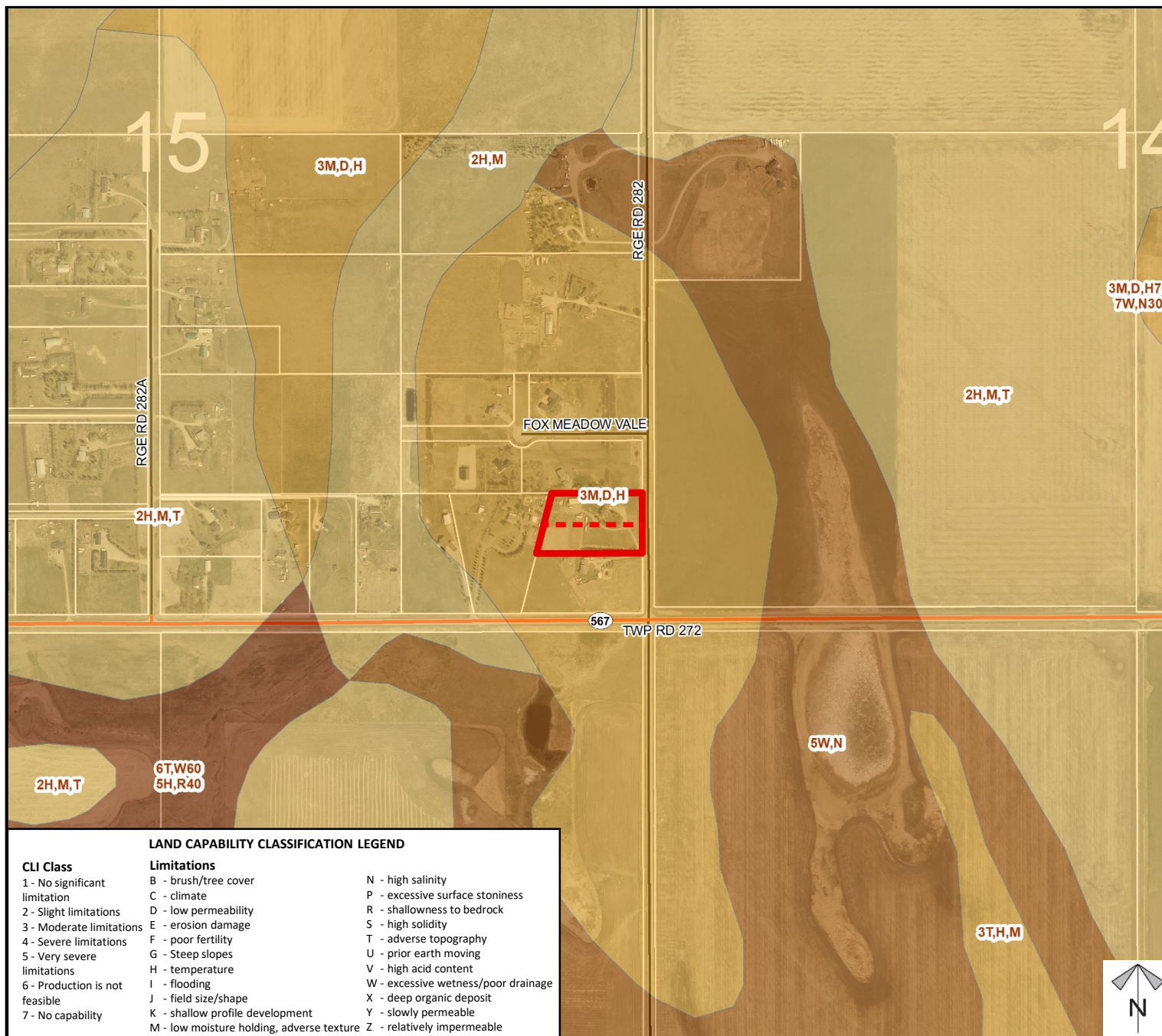
Printed: October 15, 2020



Soil Classifications

Redesignation Proposal

To redesignate the subject land from Residential, Rural District (R-RUR) to Residential, Country Residential District (R-CRD), in order to facilitate the creation of a ± 2.065 acre new lot with a ± 2.065 acre remainder.



LAND CAPABILITY CLASSIFICATION LEGEND

CLI Class

- 1 - No significant limitation
- 2 - Slight limitations
- 3 - Moderate limitations
- 4 - Severe limitations
- 5 - Very severe limitations
- 6 - Production is not feasible
- 7 - No capability

Limitations

- B - brush/tree cover
- C - climate
- D - low permeability
- E - erosion damage
- F - poor fertility
- G - Steep slopes
- H - temperature
- I - flooding
- J - field size/shape
- K - shallow profile development
- M - low moisture holding, adverse texture
- N - high salinity
- P - excessive surface stoniness
- R - shallowness to bedrock
- S - high solidity
- T - adverse topography
- U - prior earth moving
- V - high acid content
- W - excessive wetness/poor drainage
- X - deep organic deposit
- Y - slowly permeable
- Z - relatively impermeable

Division: 6
 File: PL20200142
 Roll: 07315033
 Legal: Lot:1 Block:8
 Plan:9611667
 SE-15-27-28-W04M

Printed: October 15, 2020

Landowner Circulation Area

Redesignation Proposal

To redesignate the subject land from Residential, Rural District (R-RUR) to Residential, Country Residential District (R-CRD), in order to facilitate the creation of a ± 2.065 acre new lot with a ± 2.065 acre remainder.

Legend

Support



Opposition



Division: 6
File: PL20200142
Roll: 07315033
Legal: Lot:1 Block:8
Plan:9611667
SE-15-27-28-W04M

Printed: October 15, 2020

