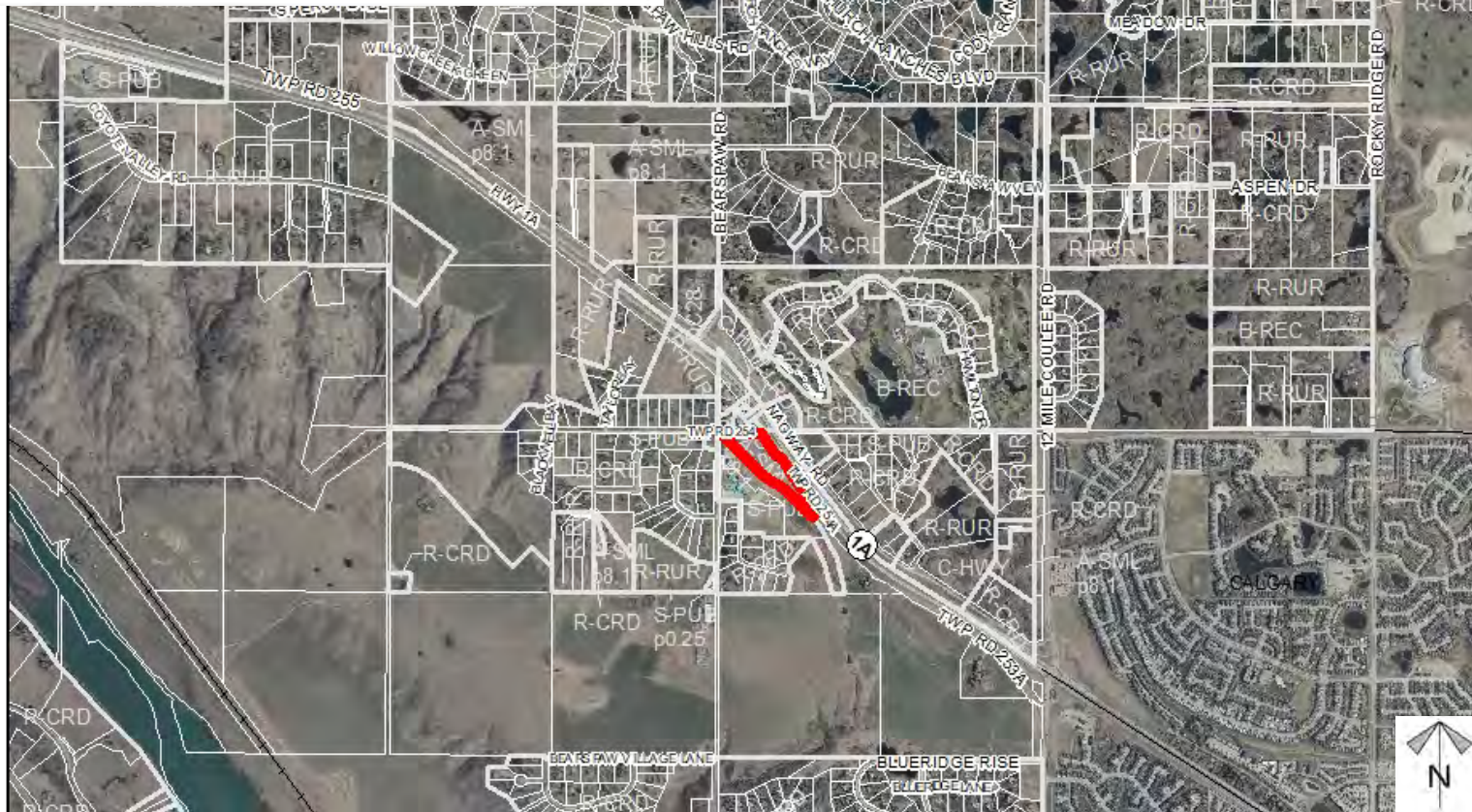
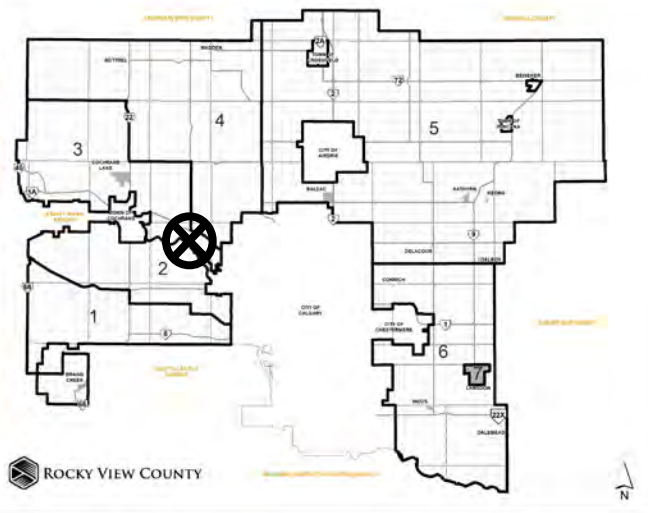


Location & Context

Located on the southeast corner of Bearspaw RD and TWP RD 254, left of Highway 1A, and approximately 1.2 km west of the city of Calgary.



Division: 3
 Roll: 05619033
 File: PL20210114/0115
 Printed: November 17, 2021
 Legal: Block:4 Plan:1688 JK;
 within NW-19-25-02-W05M

Development Proposal

Redesignation Proposal

To redesignate the subject lands from Agricultural, General District (A-GEN) to Special, Public Service District (S-PUB).



Division: 3
Roll: 05619033
File: PL20210114/0115
Printed: November 17, 2021
Legal: Block: 4 Plan: 1688 JK;
within NW-19-25-02-W05M

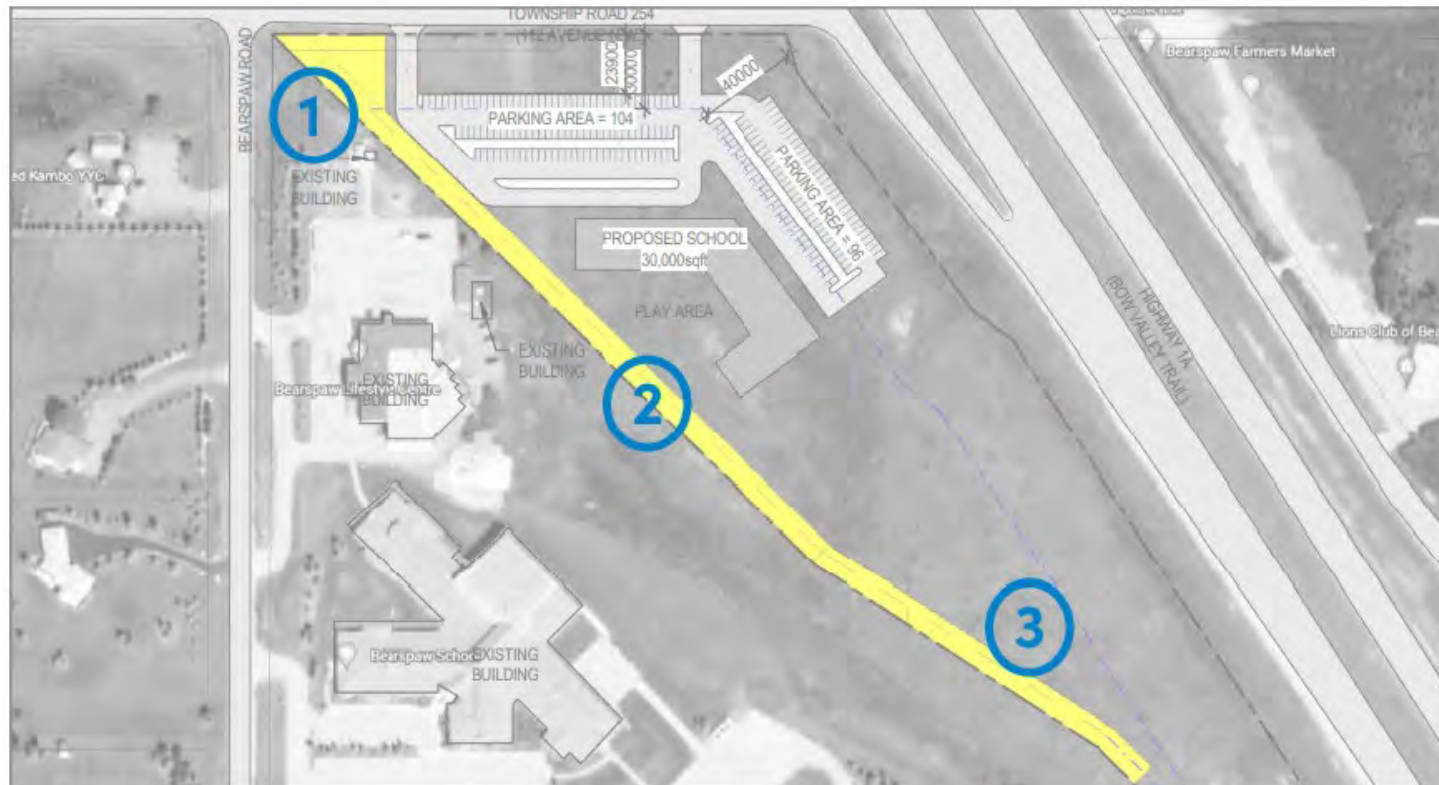


Figure 04: Site Plan with Municipal Reserve Contribution

**Master Site
Development Plan
(MSDP) Proposal**

To approve the Renfrew Educational Services Master Site Development Plan to guide and evaluate the development of a school for students with special needs.

Environmental



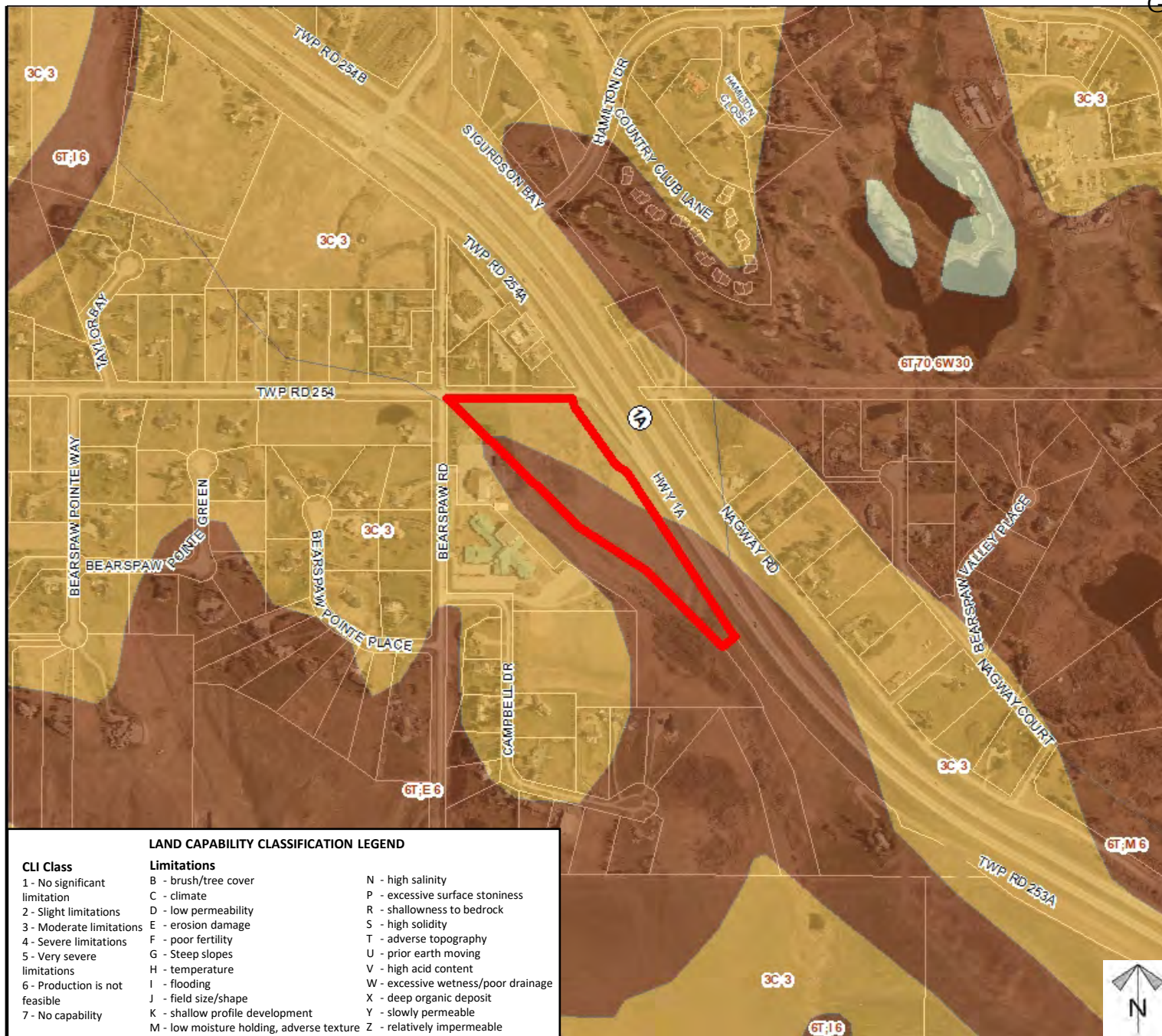
-  Subject Lands
-  Contour - 2 meters
-  Riparian Setbacks
-  Alberta Wetland Inventory
-  Surface Water

Division: 3
 Roll: 05619033
 File: PL20210114/0115
 Printed: November 17, 2021
 Legal: Block: 4 Plan: 1688 JK;
 within NW-19-25-02-W05M





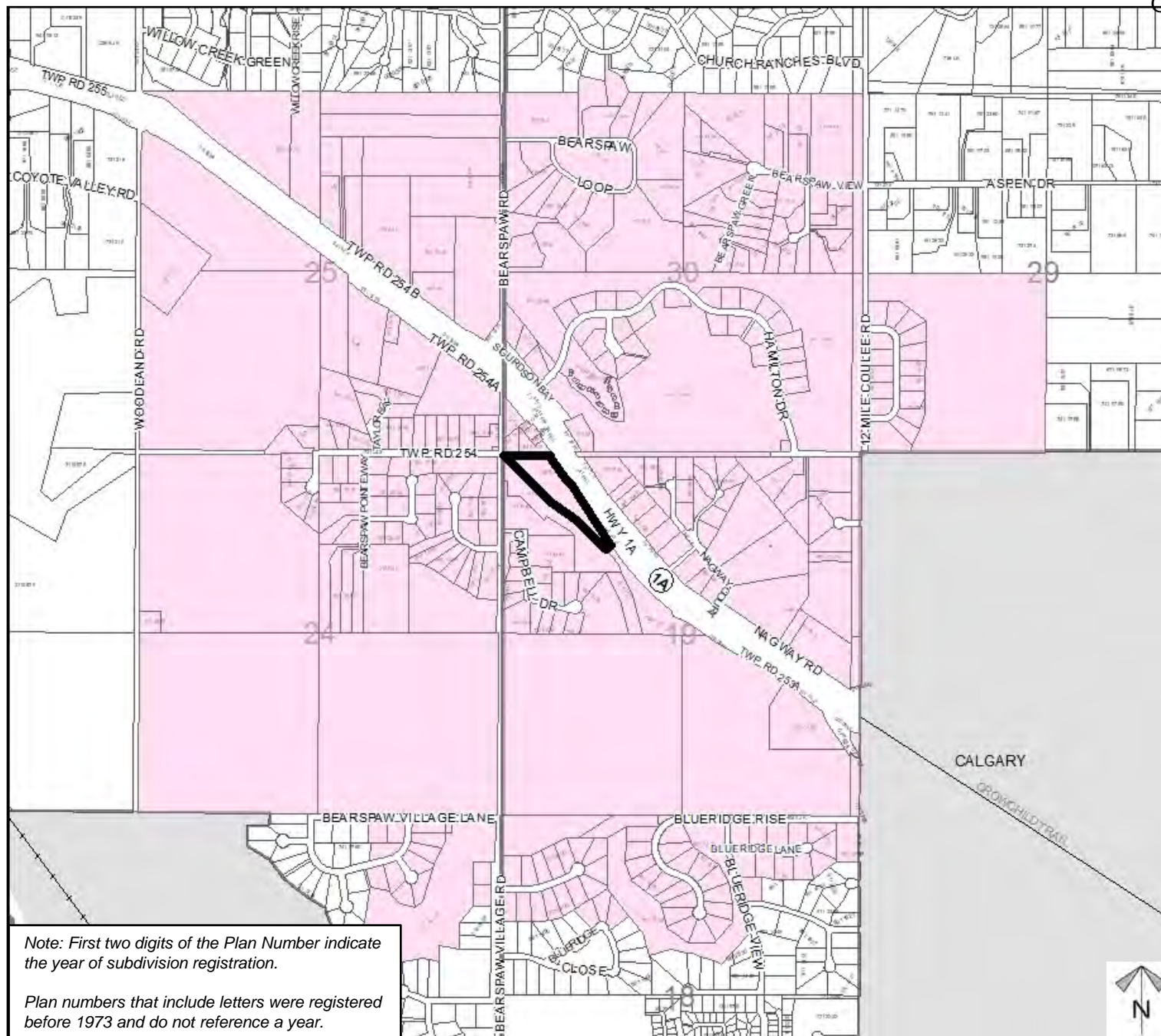
Soil Classifications



Division: 3
 Roll: 05619033
 File: PL20210114/0115
 Printed: November 17, 2021
 Legal: Block:4 Plan:1688 JK;
 within NW-19-25-02-W05M



Landowner Circulation Area



Note: First two digits of the Plan Number indicate the year of subdivision registration.

Plan numbers that include letters were registered before 1973 and do not reference a year.

Legend

Support



Not Support



Division: 3
Roll: 05619033
File: PL20210114/0115
Printed: November 17, 2021
Legal: Block: 4 Plan: 1688 JK;
within NW-19-25-02-W05M

