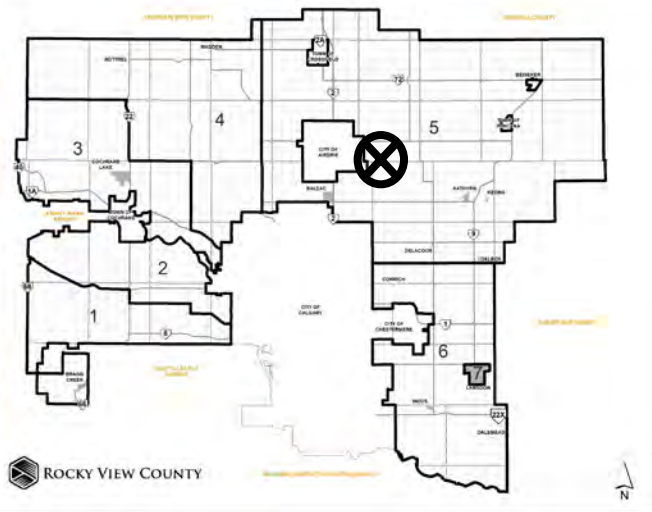


Location & Context

Redesignation Proposal

To redesignate the subject lands from Agricultural, General District (A-GEN) to Agricultural, Small Parcel District (A-SML) in order to facilitate future subdivision.

Division: 5
 Roll: 06331004
 File: PL20210198
 Printed: Dec 7, 2021
 Legal: A portion of NE-31-26-28-W04M



Development Proposal

Redesignation Proposal

To redesignate the subject lands from Agricultural, General District (A-GEN) to Agricultural, Small Parcel District (A-SML) in order to facilitate future subdivision.

A-GEN → A-SML
± 61.92 hectares
(± 153.02 acres)

Division: 5
Roll: 06331004
File: PL20210198
Printed: Dec 7, 2021
Legal: A portion of NE-31-26-28-W04M



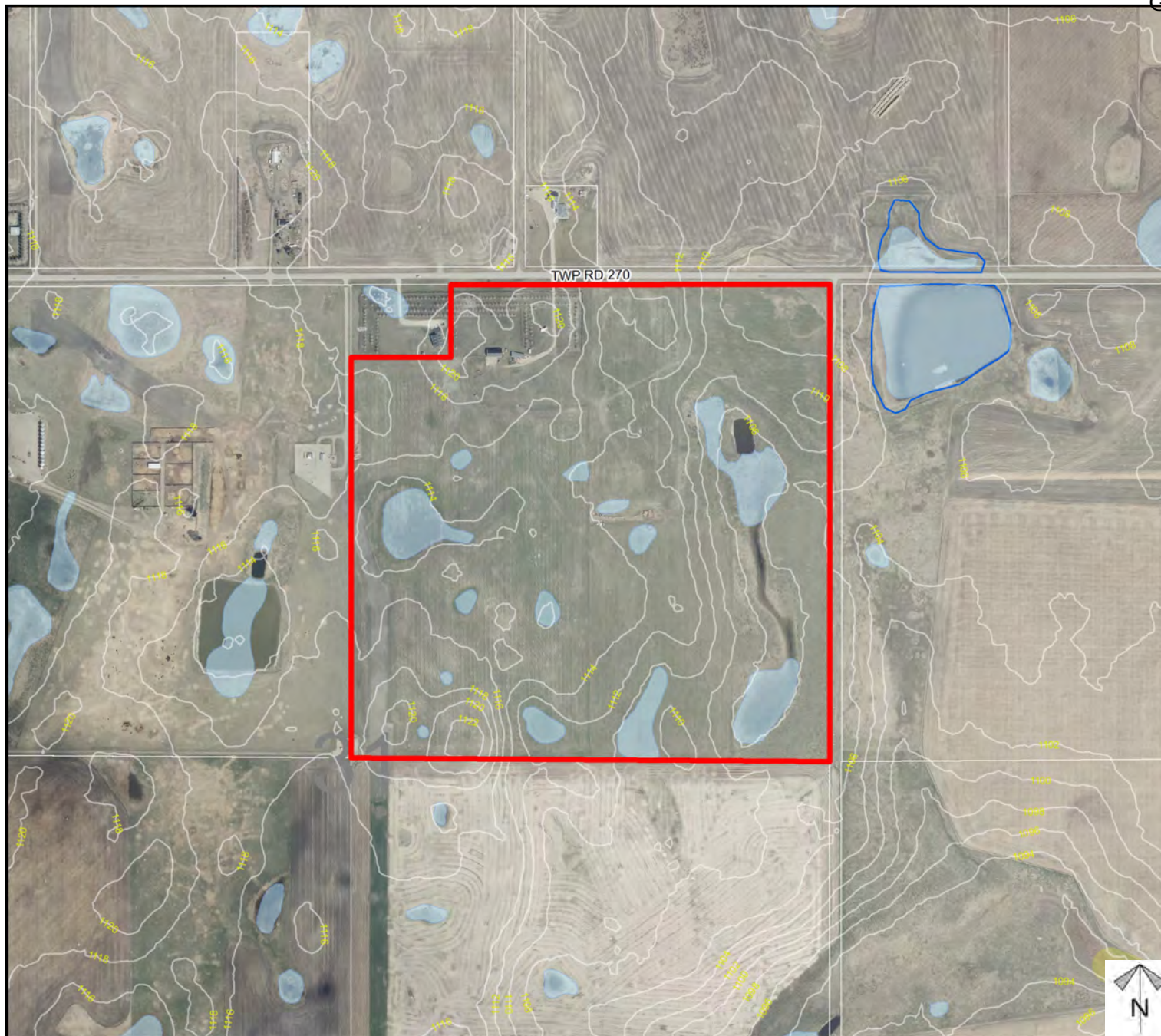
Environmental

Redesignation Proposal

To redesignate the subject lands from Agricultural, General District (A-GEN) to Agricultural, Small Parcel District (A-SML) in order to facilitate future subdivision.

-  Subject Lands
-  Contour - 2 meters
-  Riparian Setbacks
-  Alberta Wetland Inventory
-  Surface Water

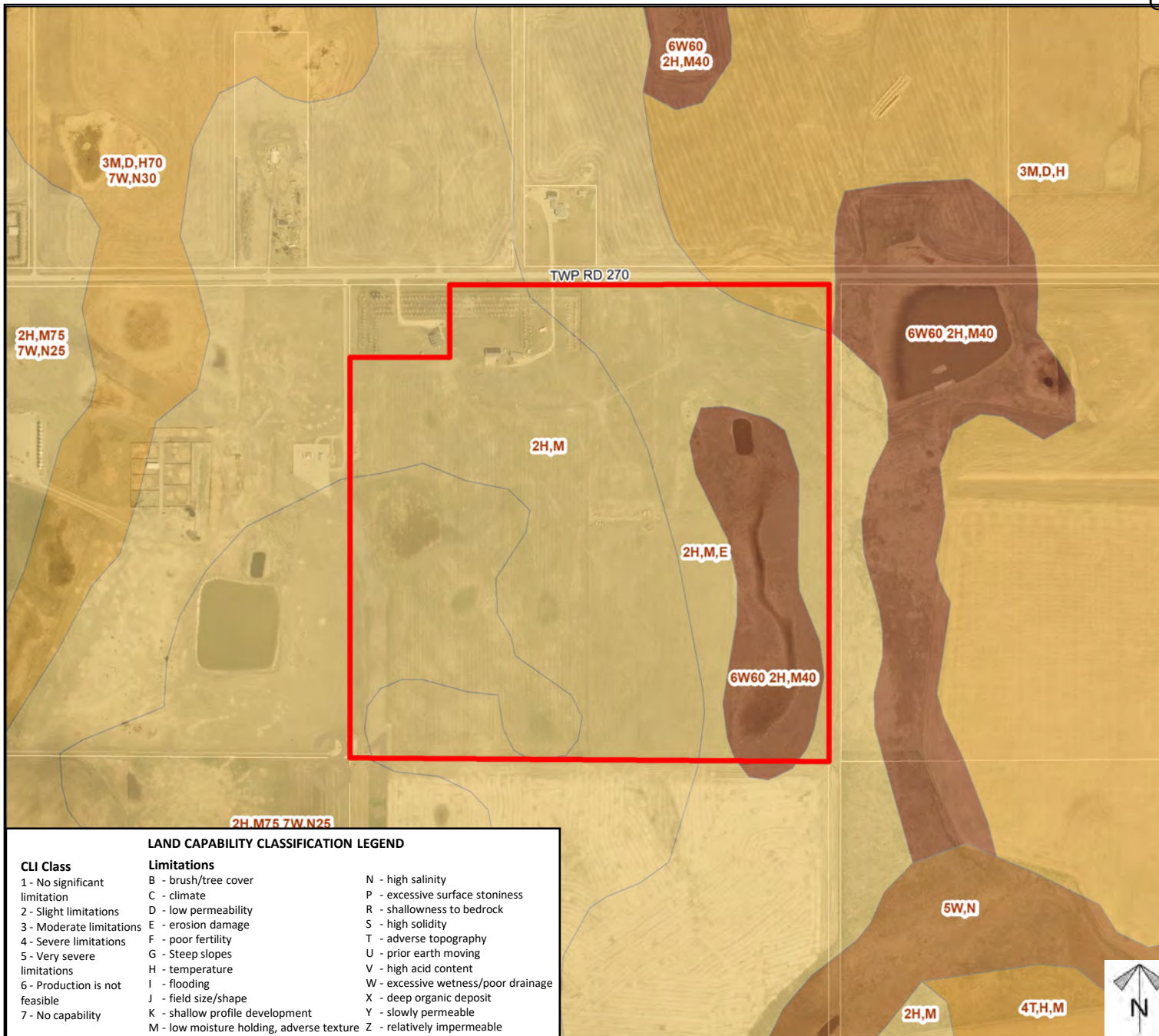
Division: 5
 Roll: 06331004
 File: PL20210198
 Printed: Dec 7, 2021
 Legal: A portion of NE-31-26-28-W04M



Soil Classifications

Redesignation Proposal

To redesignate the subject lands from Agricultural, General District (A-GEN) to Agricultural, Small Parcel District (A-SML) in order to facilitate future subdivision.



LAND CAPABILITY CLASSIFICATION LEGEND

CLI Class

- 1 - No significant limitation
- 2 - Slight limitations
- 3 - Moderate limitations
- 4 - Severe limitations
- 5 - Very severe limitations
- 6 - Production not feasible
- 7 - No capability

Limitations

- B - brush/tree cover
- C - climate
- D - low permeability
- E - erosion damage
- F - poor fertility
- G - Steep slopes
- H - temperature
- I - flooding
- J - field size/shape
- K - shallow profile development
- M - low moisture holding, adverse texture
- N - high salinity
- P - excessive surface stoniness
- R - shallowness to bedrock
- S - high solidity
- T - adverse topography
- U - prior earth moving
- V - high acid content
- W - excessive wetness/poor drainage
- X - deep organic deposit
- Y - slowly permeable
- Z - relatively impermeable

Division: 5
 Roll: 06331004
 File: PL20210198
 Printed: Dec 7, 2021
 Legal: A portion of NE-31-26-28-W04M



Landowner Circulation Area

Redesignation Proposal

To redesignate the subject lands from Agricultural, General District (A-GEN) to Agricultural, Small Parcel District (A-SML) in order to facilitate future subdivision.

Legend

Support



Not Support



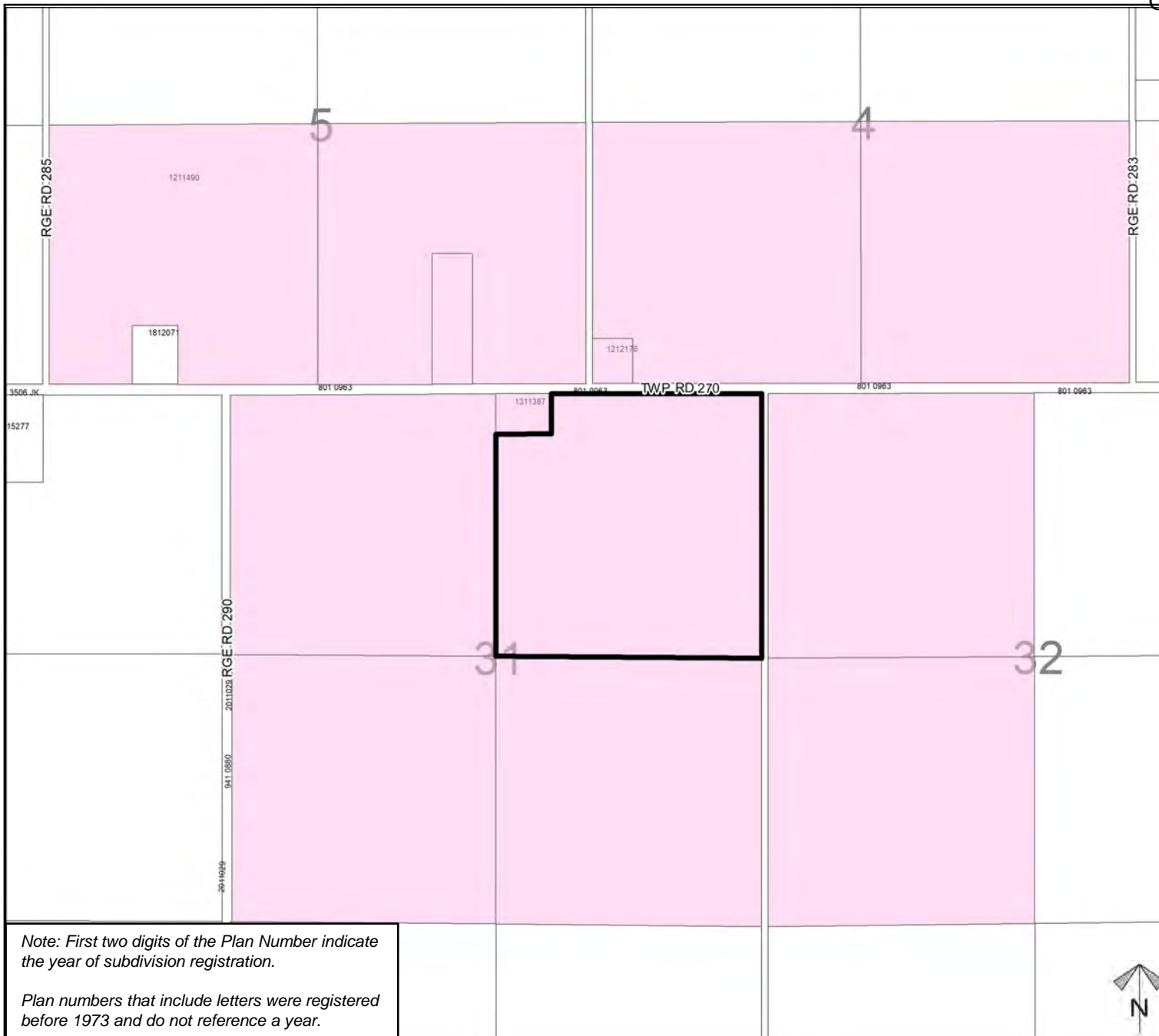
Division: 5

Roll: 06331004

File: PL20210198

Printed: Dec 7, 2021

Legal: A portion of NE-31-26-28-W04M



Note: First two digits of the Plan Number indicate the year of subdivision registration.

Plan numbers that include letters were registered before 1973 and do not reference a year.