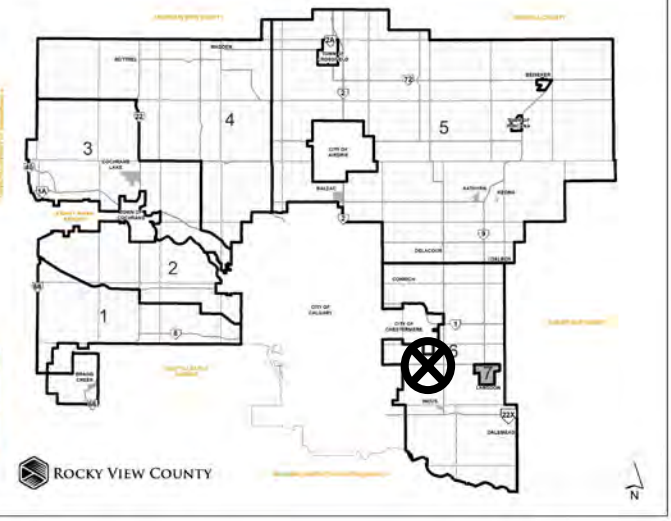


## Location & Context

### Redesignation Proposal

To redesignate the subject lands from Agricultural, Small Parcel District (A-SML p8.1) to Business, Live-Work District (B-LWK) to accommodate future business uses on the lands.



Division: 6  
 Roll: 03323013  
 File: PL20210161  
 Printed: October 8, 2021  
 Legal: Block:1 Plan:7311129  
 within NW-23-23-28-W04M



## Development Proposal

### Redesignation Proposal

To redesignate the subject lands from Agricultural, Small Parcel District (A-SML p8.1) to Business, Live-Work District (B-LWK) to accommodate future business uses on the lands.

A-SML p8.1 → B-LWK  
±7.82 ha  
(±19.33 ac)

RGE RD 282

560 GLENMORE TRAIL



Division: 6  
Roll: 03323013  
File: PL20210161  
Printed: October 8, 2021  
Legal: Block: 1 Plan: 7311129  
within NW-23-23-28-W04M





## Environmental

### Redesignation Proposal

To redesignate the subject lands from Agricultural, Small Parcel District (A-SML p8.1) to Business, Live-Work District (B-LWK) to accommodate future business uses on the lands.



- Subject Lands
- Contour - 2 meters
- Riparian Setbacks
- Alberta Wetland Inventory
- Surface Water

Division: 6  
 Roll: 03323013  
 File: PL20210161  
 Printed: October 8, 2021  
 Legal: Block:1 Plan:7311129  
 within NW-23-23-28-W04M

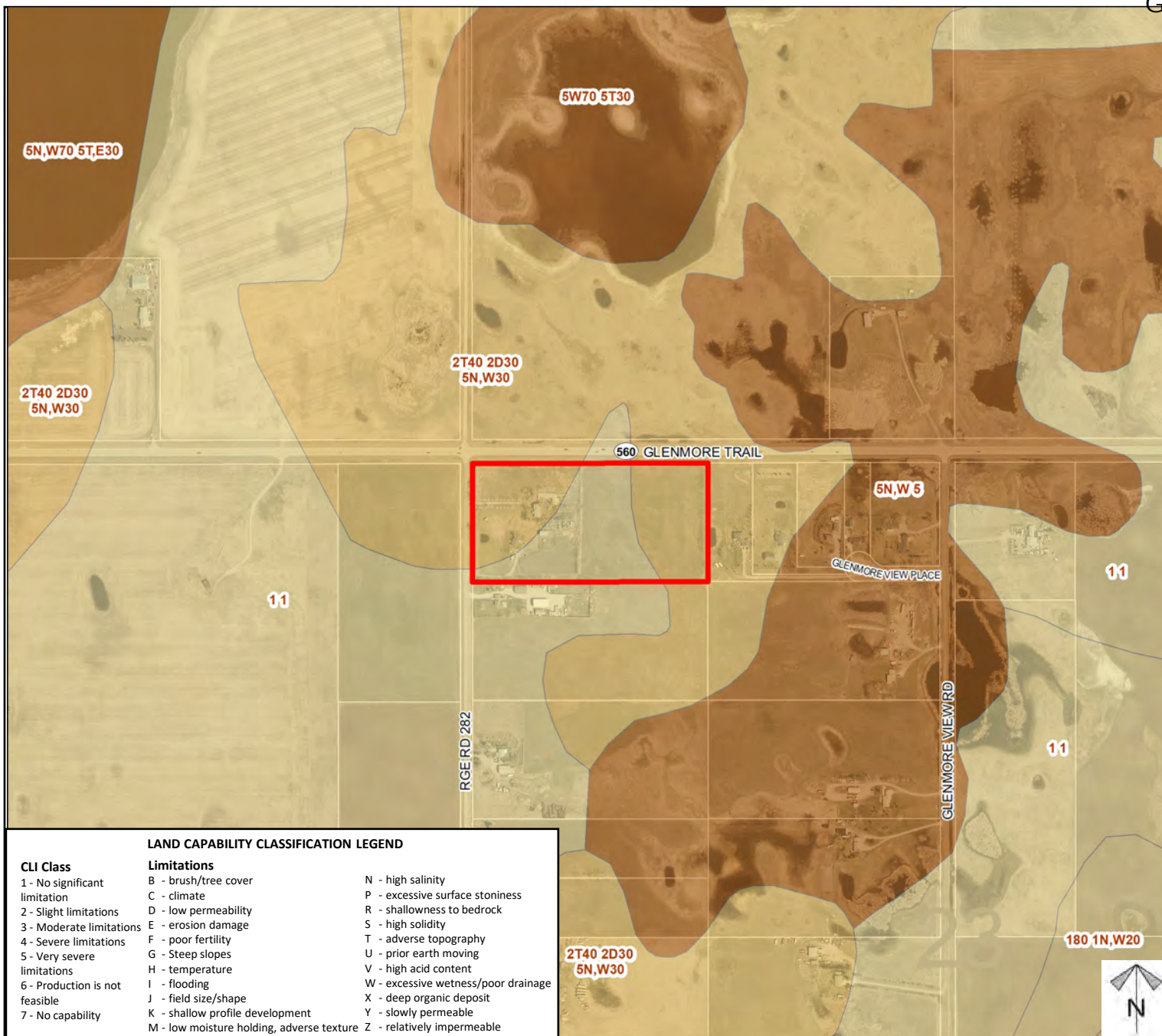




## Soil Classifications

### Redesignation Proposal

To redesignate the subject lands from Agricultural, Small Parcel District (A-SML p8.1) to Business, Live-Work District (B-LWK) to accommodate future business uses on the lands.



Division: 6  
Roll: 03323013  
File: PL20210161  
Printed: October 8, 2021  
Legal: Block: 1 Plan: 7311129  
within NW-23-23-28-W04M



## Landowner Circulation Area

### Redesignation Proposal

To redesignate the subject lands from Agricultural, Small Parcel District (A-SML p8.1) to Business, Live-Work District (B-LWK) to accommodate future business uses on the lands.



Note: First two digits of the Plan Number indicate the year of subdivision registration.

Plan numbers that include letters were registered before 1973 and do not reference a year.

### Legend

Support



Not Support



Division: 6  
Roll: 03323013  
File: PL20210161  
Printed: October 8, 2021  
Legal: Block: 1 Plan: 7311129  
within NW-23-23-28-W04M