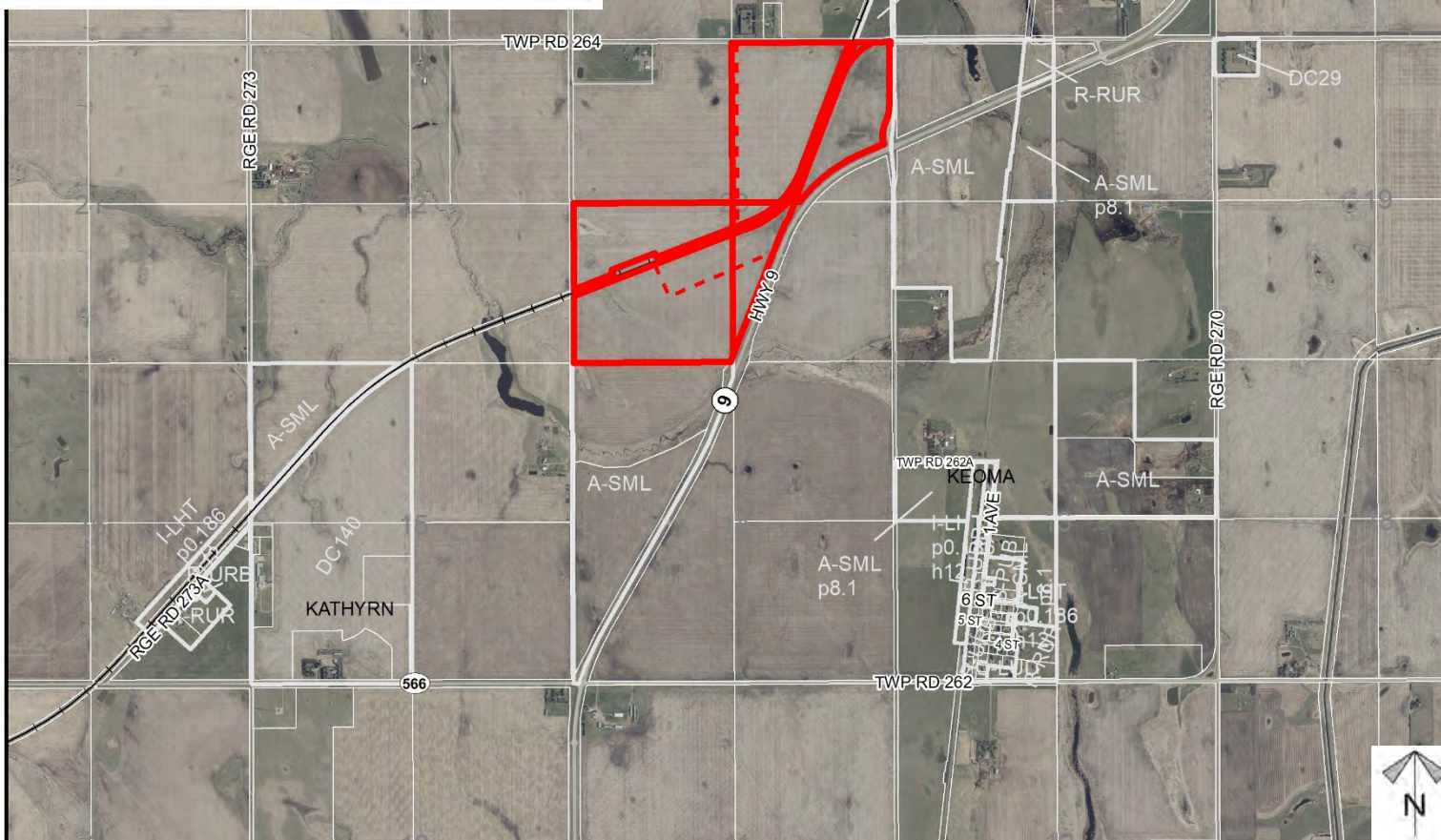
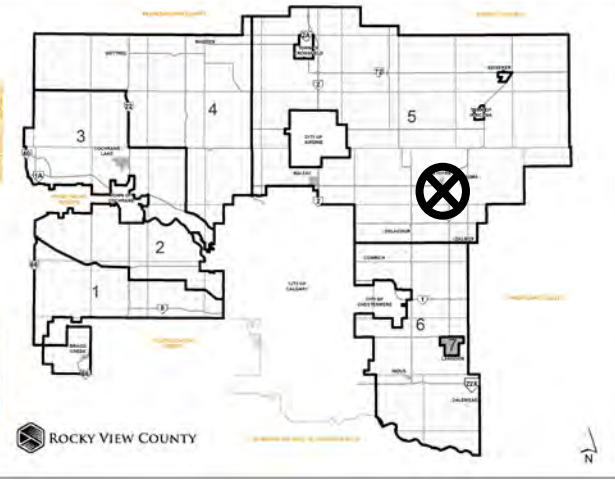




Location & Context

Redesignation Proposal

To redesignate the subject lands from Agricultural, General District (A-GEN) to Agricultural, Small District (A-SML), Agricultural, Small District (A-SML) p.8.1 and Agricultural, Small District (A-SML) p.12.1 in order to facilitate a future boundary adjustment



Division: 5

Roll:

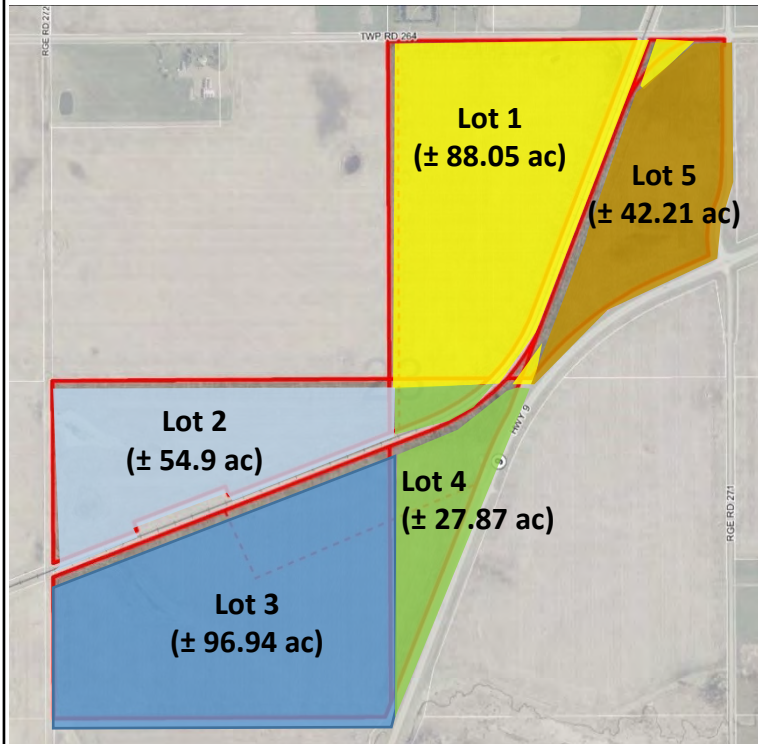
06223002/004/006/007/009

File: PL20210088

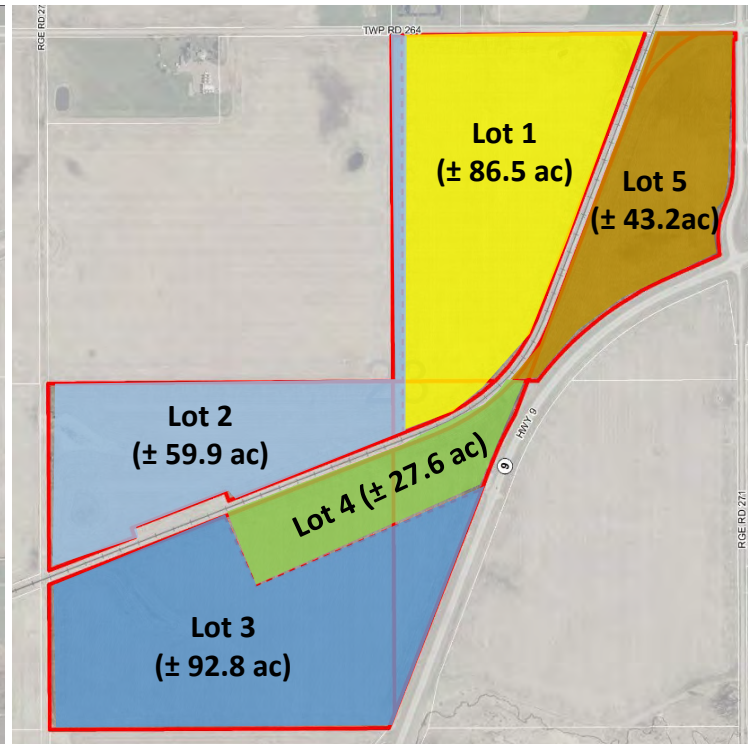
Printed: May 20, 2021

Legal: Portions of
NE/SE/SW-23-26-27-W04M

Existing 5 Lots



New 5 Lots After Boundary Adjustment



Existing and New Proposal

Redesignation Proposal

To redesignate the subject lands from Agricultural, General District (A-GEN) to Agricultural, Small District (A-SML), Agricultural, Small District (A-SML) p.8.1 and Agricultural, Small District (A-SML) p.12.1 in order to facilitate a future boundary adjustment

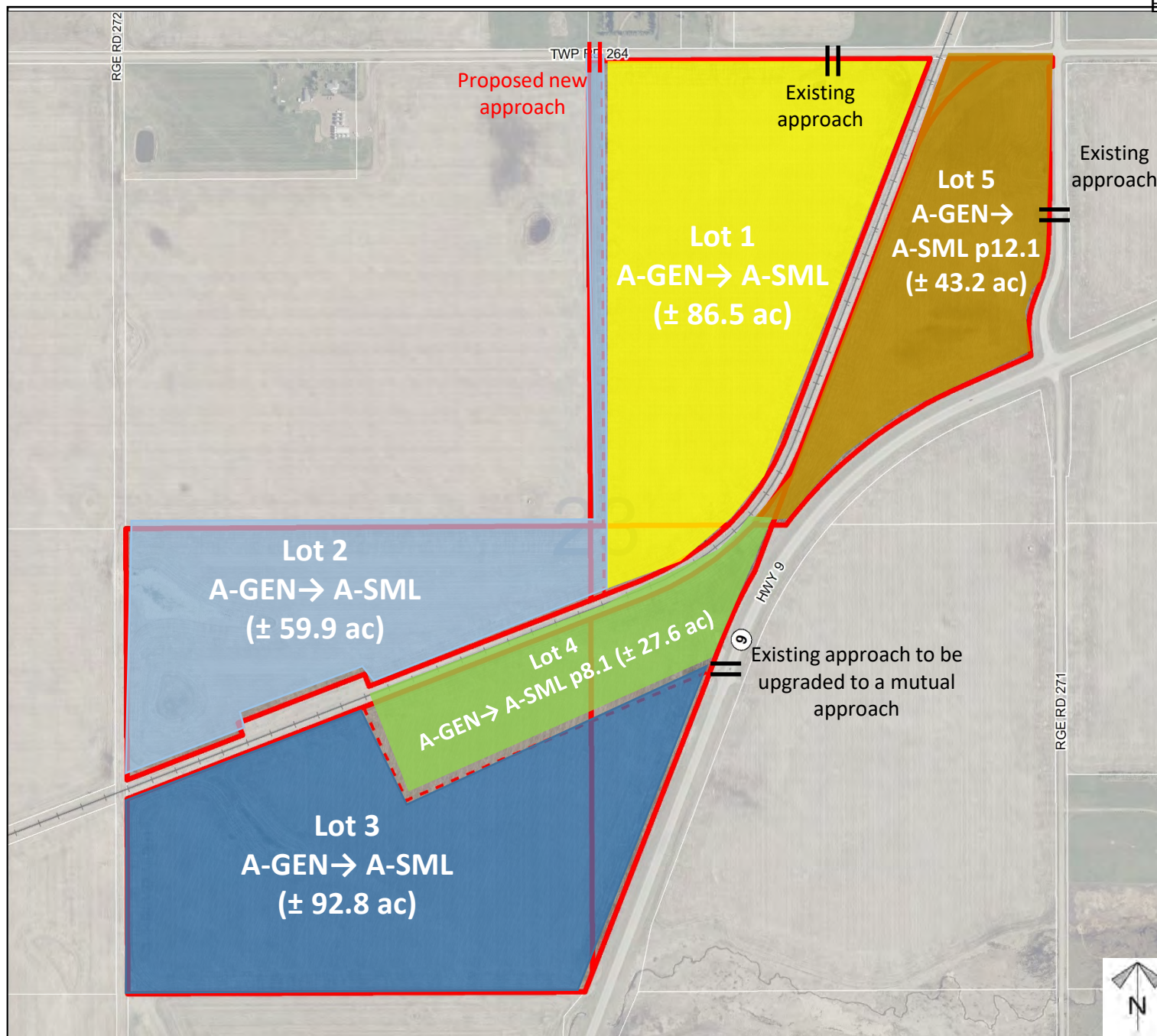
Division: 5
 Roll:
 06223002/004/006/007/009
 File: PL20210088
 Printed: May 20, 2021
 Legal: Portions of
 NE/SE/SW-23-26-27-W04M



Development Proposal

Redesignation Proposal

To redesignate the subject lands from Agricultural, General District (A-GEN) to Agricultural, Small District (A-SML), Agricultural, Small District (A-SML) p.8.1 and Agricultural, Small District (A-SML) p.12.1 in order to facilitate a future boundary adjustment



Division: 5

Roll:

06223002/004/006/007/009

File: PL20210088

Printed: May 20, 2021

Legal: Portions of
NE/SE/SW-23-26-27-W04M



Environmental

Redesignation Proposal

To redesignate the subject lands from Agricultural, General District (A-GEN) to Agricultural, Small District (A-SML), Agricultural, Small District (A-SML) p.8.1 and Agricultural, Small District (A-SML) p.12.1 in order to facilitate a future boundary adjustment

-  Subject Lands
-  Contour - 2 meters
-  Riparian Setbacks
-  Alberta Wetland Inventory
-  Surface Water

Division: 5

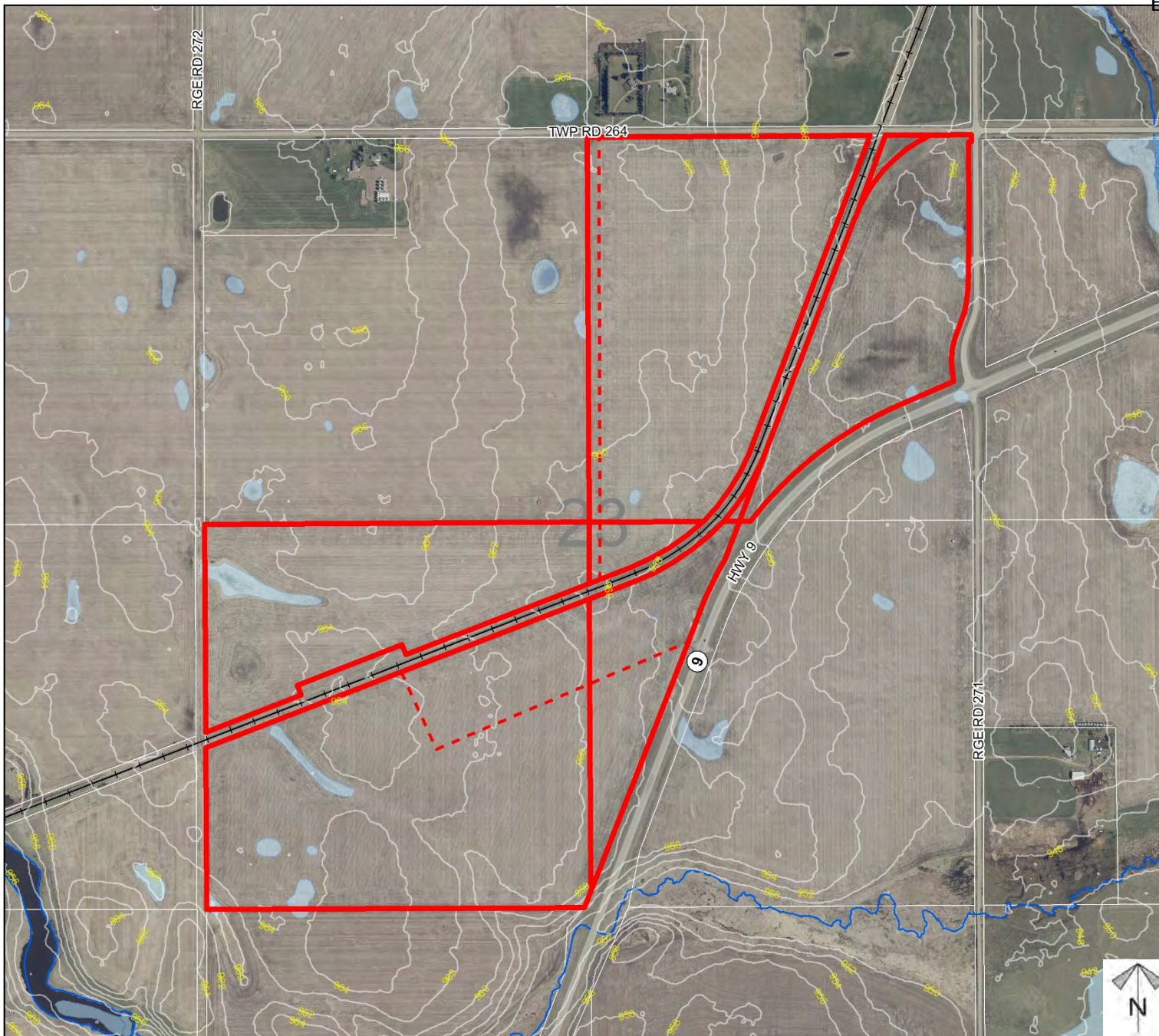
Roll:

06223002/004/006/007/009

File: PL20210088

Printed: May 20, 2021

Legal: Portions of
NE/SE/SW-23-26-27-W04M

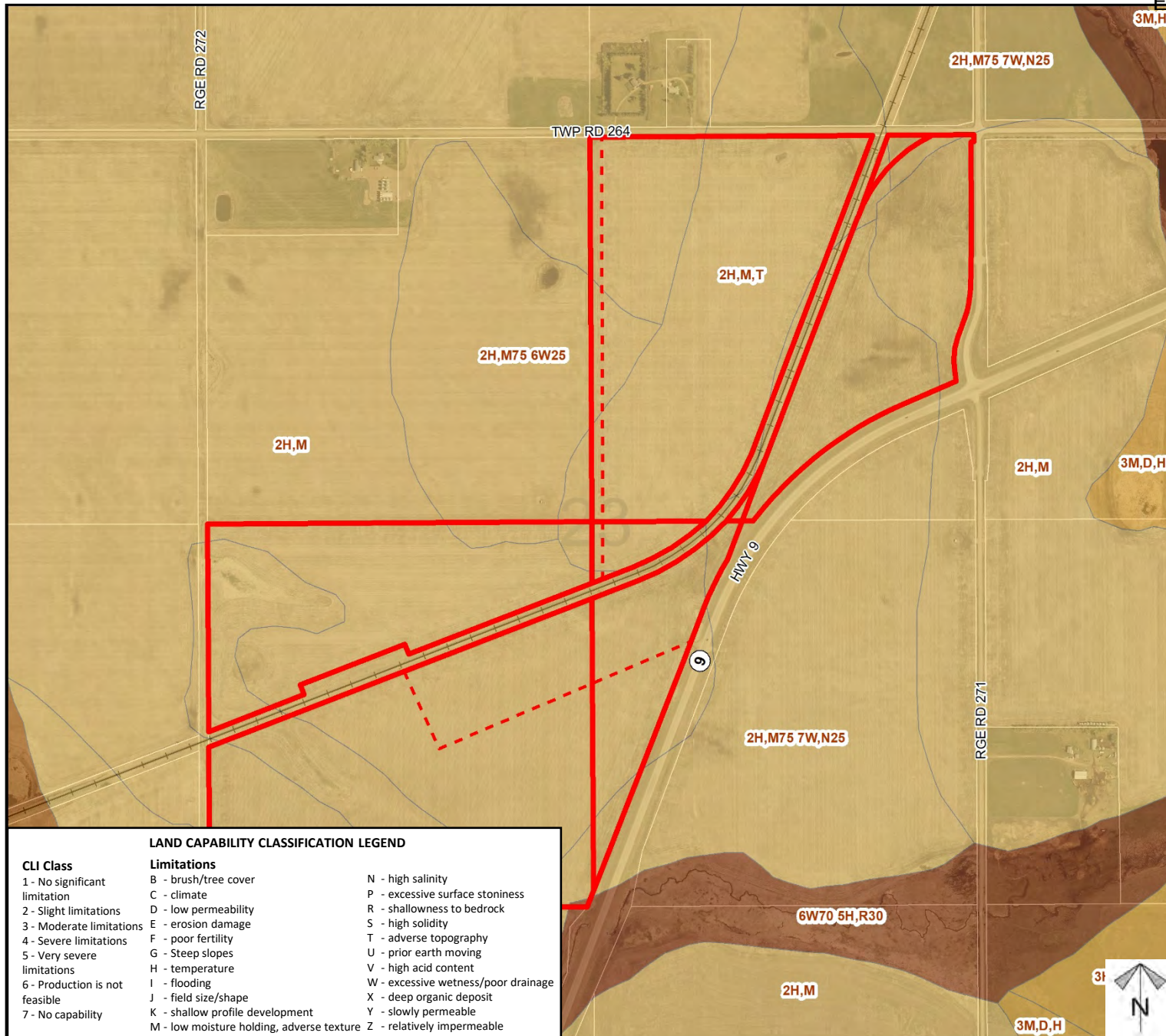




Soil Classifications

Redesignation Proposal

To redesignate the subject lands from Agricultural, General District (A-GEN) to Agricultural, Small District (A-SML), Agricultural, Small District (A-SML) p.8.1 and Agricultural, Small District (A-SML) p.12.1 in order to facilitate a future boundary adjustment



Division: 5

Roll:

06223002/004/006/007/009

File: PL20210088

Printed: May 20, 2021

Legal: Portions of
NE/SE/SW-23-26-27-W04M

Landowner Circulation Area

Redesignation Proposal

To redesignate the subject lands from Agricultural, General District (A-GEN) to Agricultural, Small District (A-SML), Agricultural, Small District (A-SML) p.8.1 and Agricultural, Small District (A-SML) p.12.1 in order to facilitate a future boundary adjustment

Legend

Support



Not Support



Division: 5

Roll:

06223002/004/006/007/009

File: PL20210088

Printed: May 20, 2021

Legal: Portions of
NE/SE/SW-23-26-27-W04M